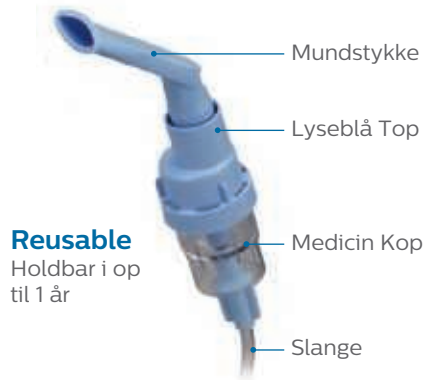


**PHILIPS**  
RESPIRONICS

**SideStream**

Forstøvere

# Quick start guide



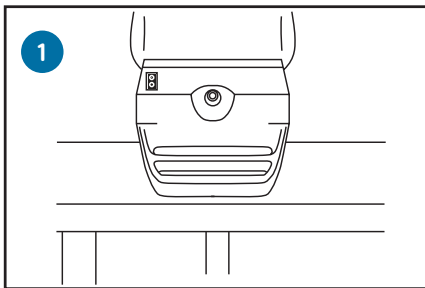
**Reusable**  
Holdbar i op  
til 1 år



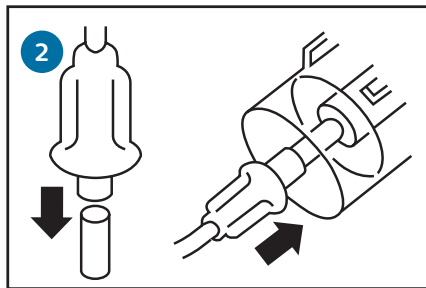
**Disposable**  
Holdbar i op  
til 30 dage

Før SideStream Nebulizers tages i brug, læs brugsanvisningen.

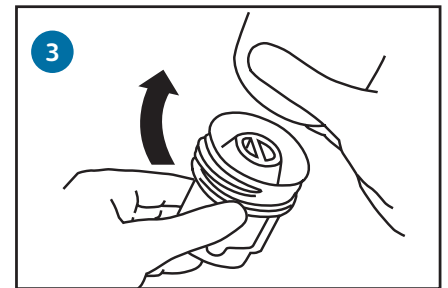
## Hvordan bruges SideStream Nebulizers



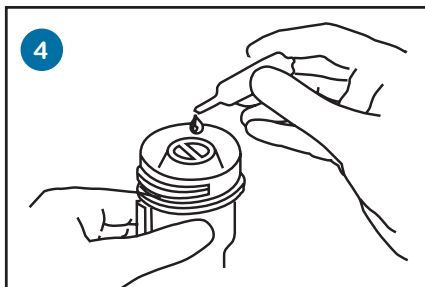
Placer kompressoren på en stabil flade.



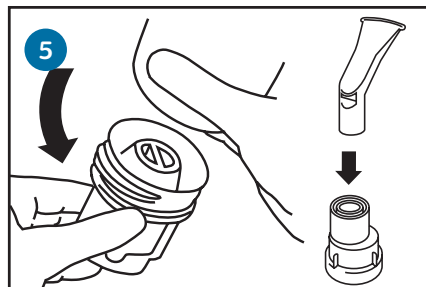
Tilslut slangen til kompressor, derefter tilslut medicin koppen.



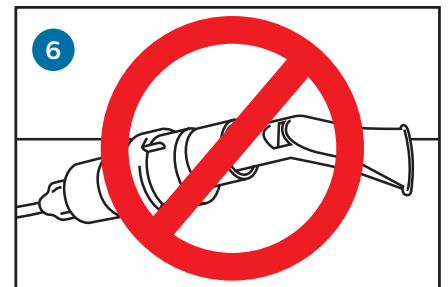
Skru toppen af.



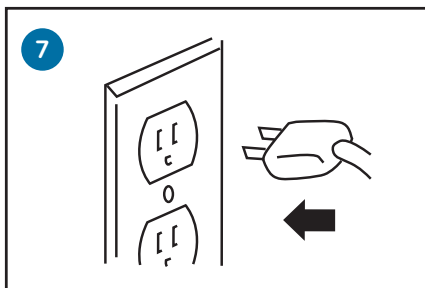
Fyld medicin i medicin koppen.



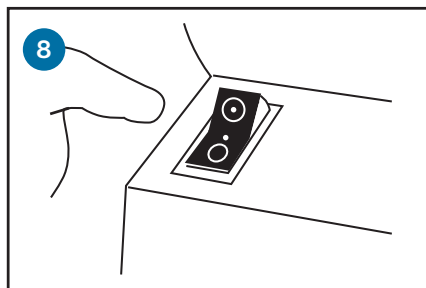
Tilslut mundstykke.



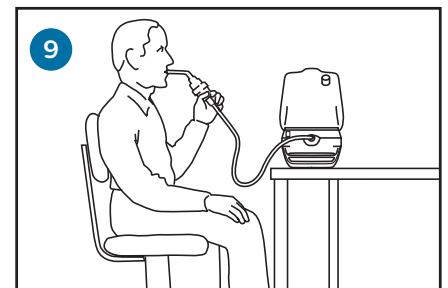
Læg ikke SideStream ned, når der er påfyldt medicin.



Tilslut kompressoren til strøm.

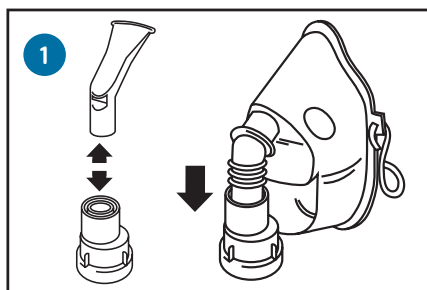


Tænd for kompressoren.

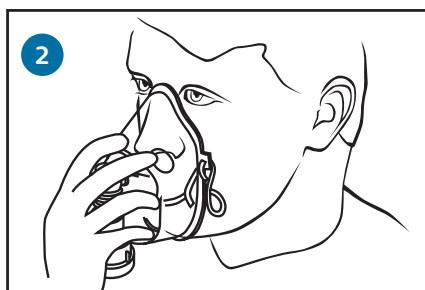


Sid oprejst og træk vejret roligt.

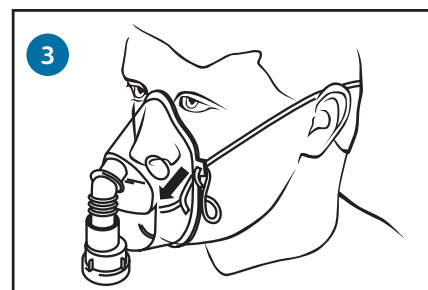
## Hvis du har brug for maske til SideStream



Udskift mundstykket med en børne- eller voksenmaske.



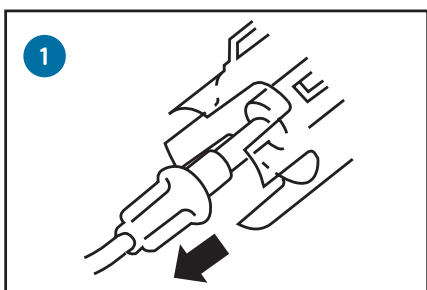
Placer masken over næse og mund.



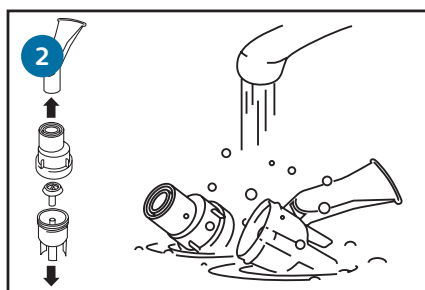
Elastikken føres over hovedet og justeres.

## Rengøringsvejledning

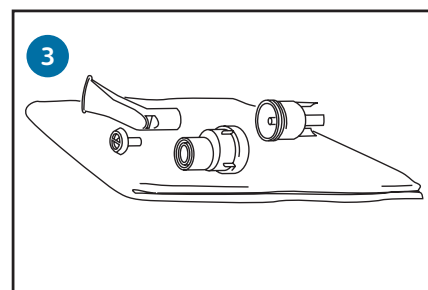
Efter hver brug (gælder både for SideStream Reusable og Disposable)...



Frakobel slangen fra medicin Koppen.

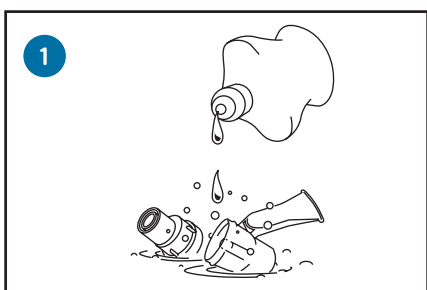


Skil og vask alle dele i varmt vand med mildt opvaskemiddel (undtagen slangen).

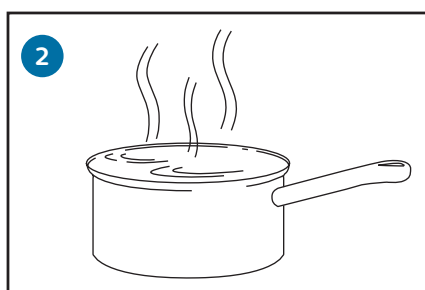


Skyl i sterilt vand og lad delene lufttørre før delene sættes sammen.

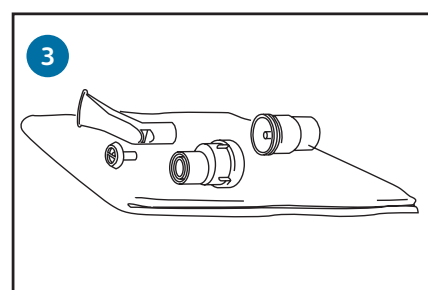
## En gang ugentligt (kun for SideStream Reusable)



Læg alle delene i en gryde med vand og 2-3 dråber mildt opvaskemiddel.



Kog i 10 minutter.



Skyl i rindende vand og lad delene lufttørre før delene sættes sammen.