



PHILIPS

dStream Breast 7ch

MR coils

Designed for breast diagnostic **and biopsy procedures**

dS Breast 7ch coil for 1.5T and 3.0T systems with dStream

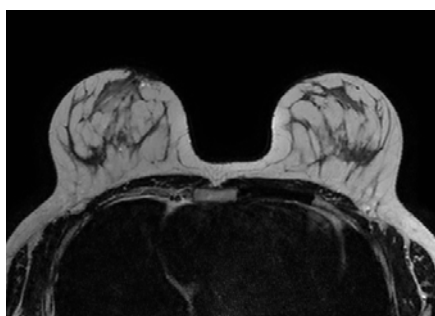
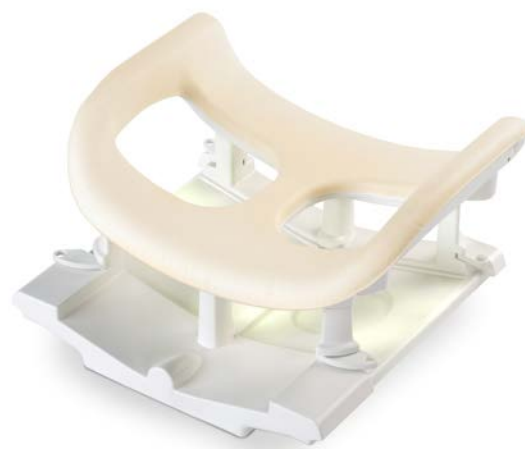
Key benefits

- Rigid, open-designed coil which can be used alone or in combination with FlexTrak Mammo
 - Excellent coverage into the axilla area
 - Promoting patient comfort with an adjustable head rest and soft patient ramp
-

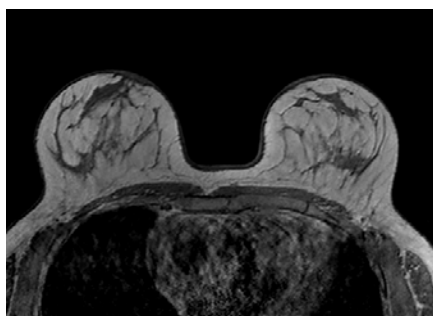
The dS Breast 7ch coil is a rigid, open-designed coil that can be used alone or in combination with FlexTrak Mammo. The coil is designed for excellent coverage into the axilla area and provides full access to the breasts for biopsy procedures. Immobilization plates are included to reduce motion. An adjustable head rest with patient mirror and soft patient ramp are included to promote patient comfort.

dStream Breast 7ch coil

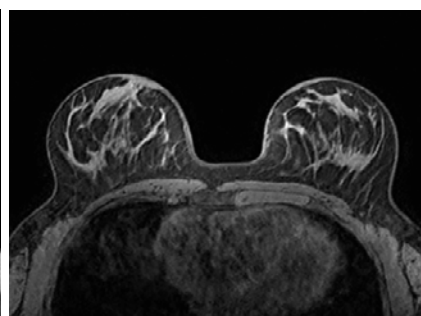
Coverage	Bilateral
Maximum number of channels	7
Main applications	Breast
Coil solution type	Dedicated
Data sampling	dStream digital broadband
Coil connection	dStream Interface
SENSE parallel imaging	dS SENSE enhanced parallel imaging performance
Other features	<ul style="list-style-type: none"> • Two sets of bilateral immobilization plates are included to reduce patient motion either in feet-head or left-right direction • Integrated LED light offering clear view during biopsy procedure



Axial T2w TSE
Resolution: 1.0 x 1.1 x 3.0 mm
Scan time: 3:16 min
Ingenia 1.5T



Axial T1w FFE 3D
Resolution: 1.0 x 1.0 x 1.0 mm
Scan time: 0:57 min
Ingenia 1.5T



Axial eTHRIVE
Resolution: 1.0 x 1.0 x 1.0 mm
Scan time: 1:19 min
Ingenia 1.5T

