



**PHILIPS**

dStream WholeBody

MR coils

# Integrated solution for whole body MR imaging

dS WholeBody coil for 1.5T and 3.0T systems with dStream

## Key benefits

- Full anatomic coverage up to 200 cm
- Conforming and strapless design to promote patient comfort
- Digitization in the coils for increased SNR
- dS SENSE to speed up acquisition in all imaging directions

An integrated coil solution for whole body and peripheral vascular related imaging. It includes two FlexCoverage Anterior coils. Combined with the FlexCoverage Posterior, HeadNeck and Base it enables 200 cm coverage with a maximum of 108 channels.

The flexible, lightweight easy-to-position FlexCoverage Anterior coil is designed to conform both in right-left and foot-head directions to support virtually all patients. This allows large coverage and comfortable strap-free operation.

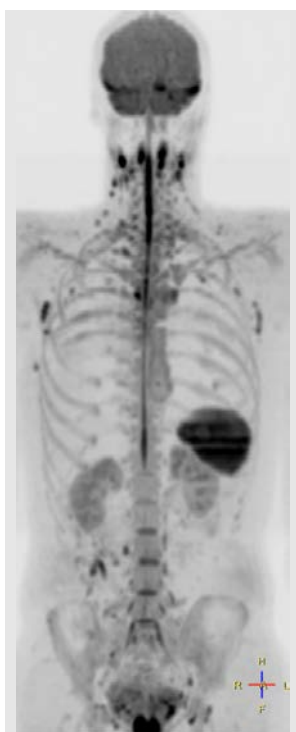
# dStream WholeBody coil

Coverage	200 cm
Maximum number of channels	108
Main applications	Whole Body Abdomen Pelvis Cardiac Peripheral vascular
Coil solution type	Integrated
Data sampling	dStream digital broadband
Coil connection	Triple FlexConnect
SENSE parallel imaging	dS SENSE enhanced parallel imaging performance



### T2w TSE

Resolution: 1.2 x 1.5 x 6.0 mm  
Scan time: 0:24 min /station  
Achieva dStream 1.5T



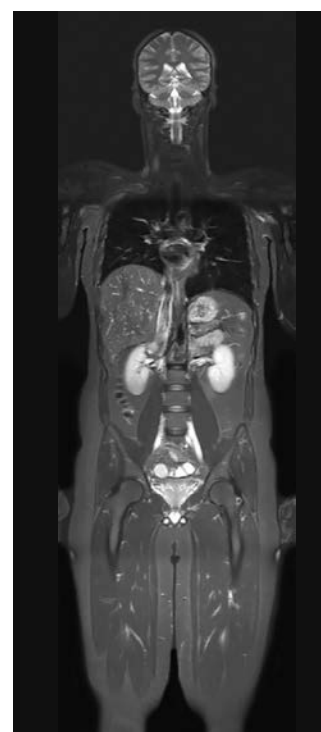
### DWIBS

Resolution:  
5.0 x 5.0 x 6.0 mm  
Scan time: 1:58 min /station  
Achieva dStream 1.5T



### T1w TSE

Resolution: 1.6 x 2.1 x 6.0 mm  
Scan time: 1:32 min /station  
Ingenuia 1.5T



### STIR

Resolution: 1.6 x 2.6 x 6.0 mm  
Scan time: 1:20 min /station  
Ingenuia 1.5T

