

Evolution 2.0 Image Quality Enhancements

The IQ release for Evolution 2.0 focuses on General Imaging and WHC

New Breast Imaging TSP's (L12-5, L18-5)



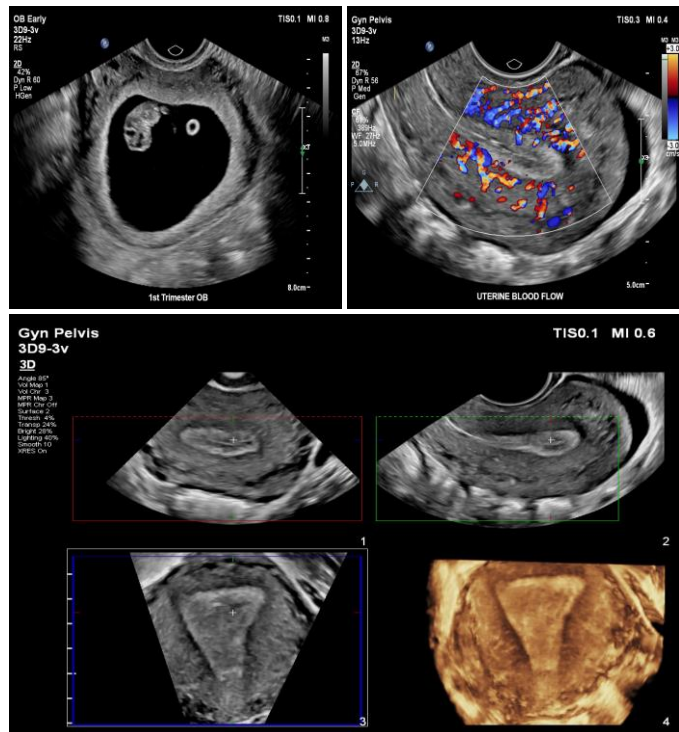
NEW Advanced Breast TSP's on L12-5 and L18-5 transducers

- Robust imaging default performance
- Increased detail resolution
- Better border delineation on normal and abnormal tissue
- Improved penetration and resolution after 3cm's
- Uniform gray presentation in fatty as well as dense breast tissue
- White levels are more controlled
- Improved color sensitivity and 2D Opt inheritance
- Evolution 1.0 Breast TSP remains available
- Harmonics is recommended for targeted scanning, not surveys



Enhancements to 3D9-3v GYN and OB Image Quality

- **On the 3D9-3v transducer**, image quality has been substantially improved on all GYN and OB TSP's
- **Improved 2D resolution:** Image quality enhancements in 2D and 3D/4D MPRs, grayscale contrast, resolution, and harmonics
- **Color/CPA:** 2D IQ behind Color/CPA is improved. Directional CPA defaults to "ON" in OB TSP. Improved Color/CPA sensitivity
- **2D Opt Inheritance:** 3D9-3v behavior is consistent with Evolution 1.0
- **AutoSCAN:** Defaults to "ON" in OB TSP
- **Gray Maps:** Re-organized so that the user increases the map number, the gray increases and contrast is reduced
- **Color 3D Volume view:** Defaults from Top view to Front view in GYN TSP
- **Note: Please re-evaluate and update custom TSP's based on these improvements**



Tips: Scanning with 3D9-3v TSP

- **OB Early:** Turn off XRES to increase gray levels for better visualization of the amnion.
- **OB Gen:** This TSP is optimized ≥ 30 weeks fetal imaging and for the cervix
- **GYN:** To reduce user steps, 3D ROI defaults to "OFF". Users still can create a quicksave TSP with 3D ROI "ON", if desired. **FYI: The main screen provides no indication the user is in 3D standby however the 3D Tab will be displayed on the touchscreen**

Tips: Scanning with C9-2 OB Gen

C9-2 OB Gen imaging also has new adjustments to address the high-resolution appearance of certain SonoCT settings:

- **When imaging soft tissue (kidney):**
SonoCT HRes or SonoCT Res | DRS=R1, X1
- **When trying to enhance edges (spine):**
SonoCT HRES or SonoCT Res | XRES "OFF", R1, X1

Evolution 2.0 Image Quality Enhancements

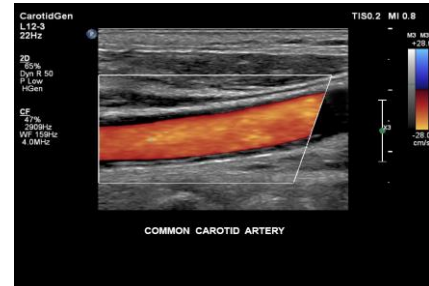
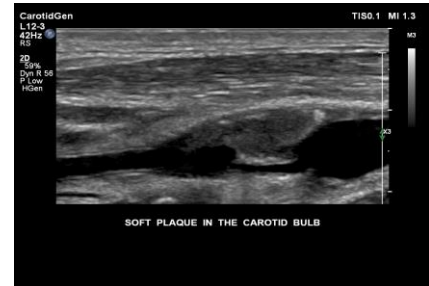
The IQ release for Evolution 2.0 focuses on General Imaging and WHC

Vascular Imaging Improvements on the L12-3

- Vascular imaging is significantly improved on the L12-3



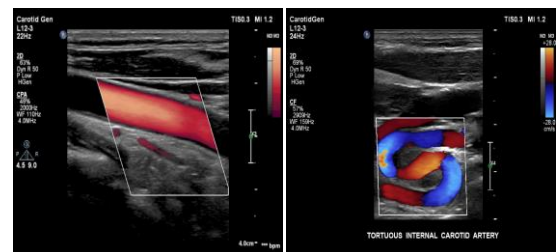
- NEW Carotid Gen TSP (L12-3)**
 - Improved vessel penetration for a wider range of body habitus. Improved plaque visualization
 - Grayscale:** Comparable penetration to iU22/iE33
 - Color:** Improved Color penetration in Flow Opt Low; more sensitive Freq Opt settings
 - CPA/DCPA:** Default scale lowered, sensitivity increased, DCPA turned OFF, image is brighter
- Improved Vasc Arterial and Vasc Venous TSP'**
 - Increased color penetration with excellent lumen filling, even in calf veins
 - Grayscale:** Improved default performance AutoSCAN defaults to "ON"
 - Color:** Default scale lowered, sensitivity increased. Vasc Arterial steering angle now defaults to left "-8"
 - CPA/DCPA:** Default scale lowered, sensitivity increased, DCPA turned OFF, image is brighter
- Note: Please re-evaluate and update custom TSP's based on these improvements**



- Evolution 1.0 Vasc Carotid TSP remains available**
 - Grayscale: 2D gain increased for brighter tissue
 - Color, CPA/DCP: Same settings as NEW Carotid Gen

Tips: Scanning with NEW Carotid Gen L12-3 TSP

- Carotid Gen 2D HGEN RS:** Improved vessel penetration for a wider range of body habitus. Improved plaque visualization
- Carotid Gen HPEN:** Deep "diving" vessels in especially difficult patients.
- Vasc Carotid HGEN:** Cleaner lumen in easy-to-scan patients
- AutoSCAN** is defaulted 'OFF' for Carotid imaging
- NOTE: AutoSCAN is defaulted "ON" for Vasc Venous and Vasc Arterial**



Contrast-Enhanced Ultrasound Improvements

Low MI contrast imaging (C5-1) is enhanced in this release.



- New General TSP** provides more distinct contrast bubbles, especially in the arterial phase. New CEUS gray maps added
- Evolution 1.0 "Abd Gen" TSP remains available and is best for late-phase contrast imaging and subtle tissue differentiation
- General CPEN M2: Increased penetration
- General CGEN M2: Clearer wash in/wash out. Good for vascular phase
- General CRES M1: Good for last phase fill of parenchyma and small lesions (Similar appearance to Abd Gen TSP)



TIP: Prior to injection, ensure the 2D gain is pointed to the reference 2D image



Philips Ultrasound
www.healthcare.philips.com/ultrasound
22100 Bothell-Everett Highway
Bothell, WA 98021-8431, USA

© Koninklijke Philips N.V. 2014. All rights are reserved. Printed in the USA.
Reproduction or transmission in whole or in part, in any form or by any means, electronic, mechanical, or otherwise, is prohibited without the prior written consent of the copyright owner.

June 2016