



PHILIPS

**Interoperability
Consulting**

**Patient monitoring
systems**

Your ally in overcoming the challenges of interoperability

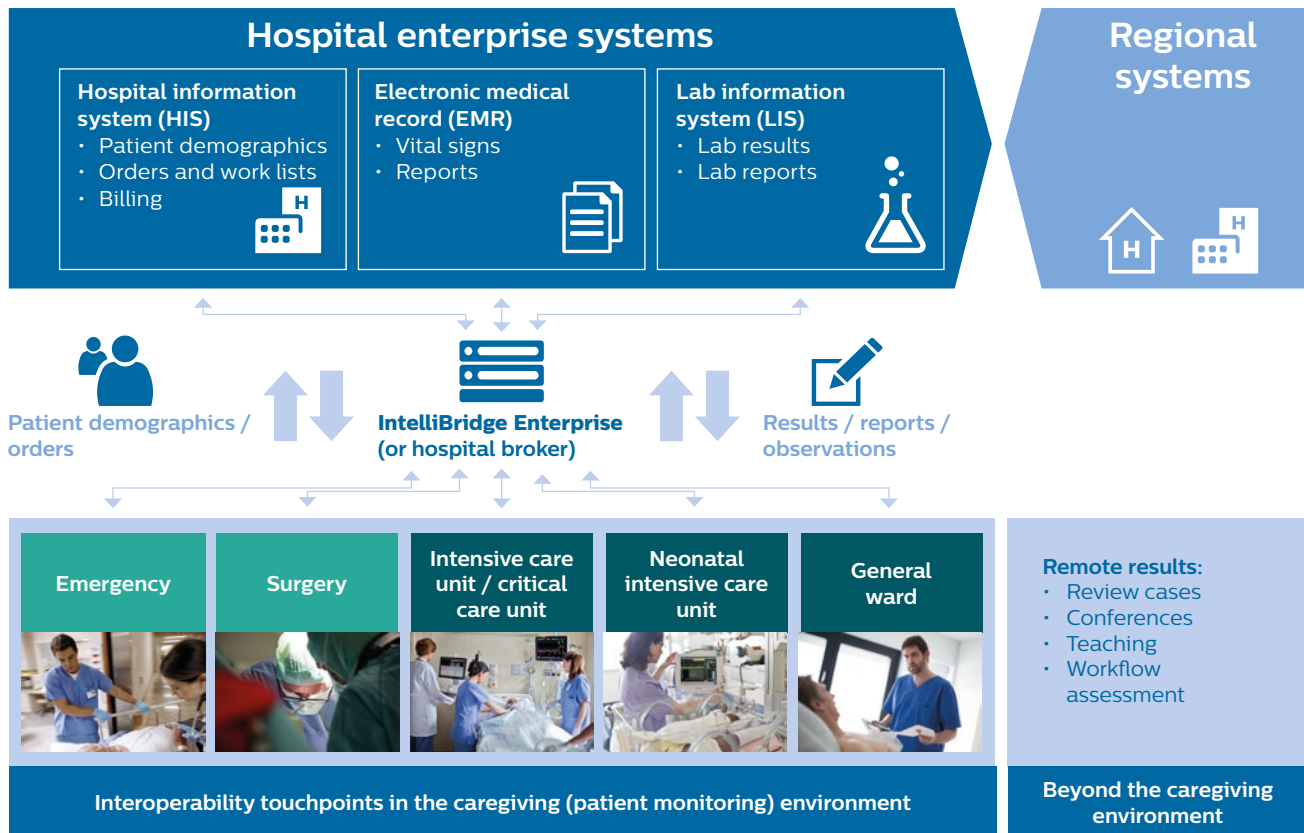
Many caregiving workflows are boosted by efficiently gathering and sharing patient information. This starts with identifying patients correctly, and continues with accessing test results and other information to support clinical decisions. Availability of this critical patient data impacts clinicians' effectiveness, whether they are at the bedside, or working through platforms like the electronic medical record (EMR) or hospital information system (HIS).

Getting different platforms from different vendors to speak to one another, helping them work quickly and effectively to collect, organize, and distribute patient data to the caregivers who need it – this is interoperability, and it can be complicated.

Philips Interoperability Consulting helps you tackle those complications, through expert assistance for IT specialists and biomedical engineers. By applying a structured approach, well-established principles, and extensive expertise to deliver support, we collaborate to understand and resolve your IT and clinical challenges and get your systems interoperating. Working closely with your team, our Interoperability Consulting services can help you realize the potential of your workflows and processes.

Key advantages

- Provide your implementation team with the complementary support they need: our experts working with your experts
- Apply a structured approach to analyze, leverage and enhance the interoperational potential of your infrastructure, IT investments, and Philips systems
- Give your clinical teams easy access to information that supports their decisions



Simplifying workflows through interoperability is about getting the right patient information to the right place at the right time.

Applying understanding of your systems and processes

Philips Interoperability Consulting follows a structured approach which we adapt to reach your goals. After getting an understanding of your situation, the range of possible further steps is customized to your needs.

Baseline assessment	Design consultancy	Interface implementation	Verification and testing	Maintenance* and sustainability
<p>Assess your current workflow and IT system requirements</p> <p>Define solution specifications and user acceptance-test scenarios</p> <p>Tailored creation of a statement of work (SOW)</p>	<p>Support your in-house team in implementing the interfacing according to the specifications and requirements</p>	<p>Implement and complete according to specifications and requirements</p> <p>Provide consultation throughout</p>	<p>Check whether acquisition, aggregation and distribution of data is correct</p> <p>Support the user acceptance test (UAT)</p>	<p>Provide ongoing feedback</p> <p>Modify Interface when needed</p>

This is an approach that has developed and shown its value over our more than 50 combined years in patient monitoring and over 30 in healthcare informatics. Philips interoperability consultants supplement this expertise with a knowledge of the relevant standards, from interfacing (like HL7 or DICOM), through integration (such as IHE), to best practice methodologies (like ITIL, or PRINCE2).



Sharing data using your HIS
WebServices



Patient demographics to and from
your HIS / EMR / regional systems



Lab results from your LIS / HIS



12-lead ECG orders from your
HIS / EMR



Patient reports to your HIS / EMR



Vital signs and observations to your
HIS / EMR

**We help you interface
– via HL7 or
WebServices – to
make the most of your
existing data sources.**

Interoperability in practice

Reliable interoperability for demographic data alleviates error prone, redundant or inefficient manual data entry.

- Retrieve central patient demographic data during administration (ADT) at the patient monitoring station
- Share patient demographic data from patient administration (ADT) at the patient monitoring station

When it comes to patient data, reliable interoperability enhances the efficiency of workflows.

- Help users check laboratory results at the monitoring station
- Transfer vital signs data or waveform reports to the HIS / EMR to enable comprehensive patient records
- Get ECG orders from the HIS or EMR, and transfer the resulting ECGs to a cardiology system (such as IntelliSpace ECG)

Complementing your team

Philips Interoperability Consulting provides you with someone who recognizes your IT and clinical needs, understands how your systems can work together to create value, and works with you to create the solution that can deliver that value.

Speak to an expert

To find out what Philips Interoperability Consulting can do for you and your workflows – contact your local Philips representative today to learn more.





Remote services provided to
128 countries/territories worldwide.



Remote service connections to
100,000+ customer systems.



7,000 field service engineers around the world (among the largest in the industry) supporting customers where and when they need it.

Abbreviation / Term	Description
DICOM	Digital Imaging and Communications in Medicine
HL7	Health level 7 standard
IHE	Integrating the healthcare enterprise
IT	Information technology
ITIL	Information technology infrastructure library
PRINCE2	Projects in controlled environments

* Requires minimum Right Fit contract. Conditions apply.
Offerings are available in selected countries and for selected products only.

