



**PHILIPS**

MR Elastography

MR Clinical application

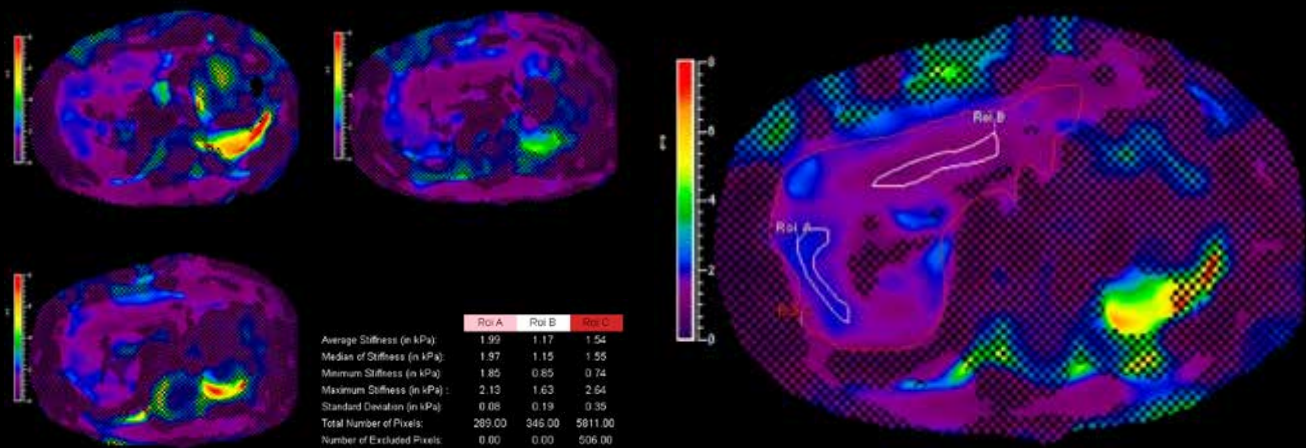
# Non-invasive assessment of liver tissue stiffness

**MR Elastography** allows for a non-invasive assessment of differences in tissue stiffness of the liver in a fast breathhold scan. Image processing is fully integrated at the scanner with automated calculation of Elastograms providing trained physicians with additional input to help make informed decisions about treatment.

**RESOUNDANT™**

# MR Elastography

|                   |   |
|-------------------|---|
| Field strength    | 1.5T, 3.0T.   |
| Main applications | Liver.  |
| Sequence          | 2D FFE phase contrast, synchronized with an external source of mechanical vibration (Resoundant®).  |
| Image types       | Automated calculation of Elastograms, reflecting tissue stiffness in kPa. Statistical confidence map provided for reliability assessment. |
| Speed             | Leverages the efficient dS SENSE parallel imaging technology to provide superior speed performance.                                       |
| Image quality     | Optimal signal-to-noise due to dStream's digitization at the patient.   |



MR Elastography  
 Stiffness map (in kPa)  
 1.5 x 4.4 x 10.0 mm, 0:14 min  
 Ingenia 1.5T

