



PHILIPS

O-MAR

MR software

Efficient near-metal **soft tissue and bone imaging**

Philips O-MAR for 1.5T systems

Key benefits

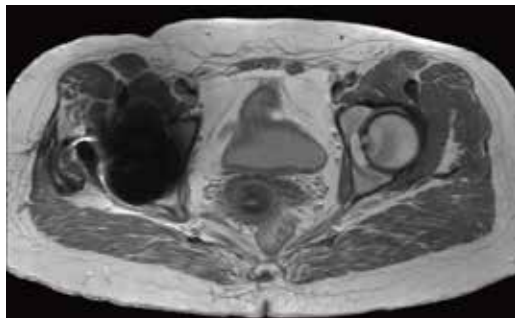
- Effective reduction of in-plane susceptibility artifacts caused by metal implants¹
- Supports most relevant clinical MR contrasts (T1, T2, PD, STIR)
- Compatible with dS SENSE for parallel imaging

O-MAR (Metal Artifact Reduction for Orthopedic implants) provides you with efficient in-plane susceptibility artifact reduction in the vicinity of metal implants¹ by extending MARS (Metal Artifact Reduction Sequence) with the View Angle Tilting (VAT) technique. Diagnostic images of the near-metal bone and soft tissue can be obtained with most relevant image contrasts (T1, T2, PD, and STIR).

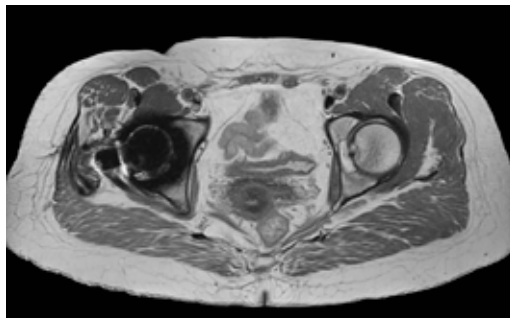
This allows you to offer post-operative MR imaging to patients with implants who could develop implant-related conditions, such as osteolysis, metallosis, pseudo tumors, and fluid retention.

¹ Only for use with MR Safe or MR Conditional Implants by strictly following the Instructions for Use.

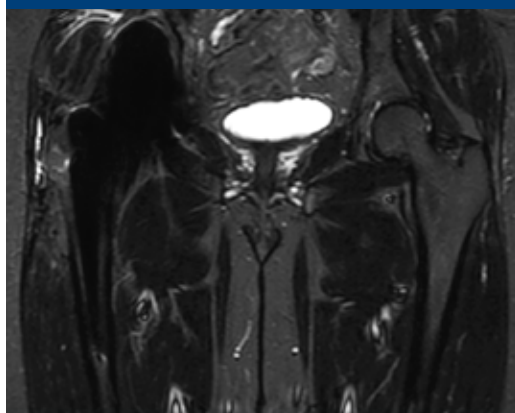
O-MAR



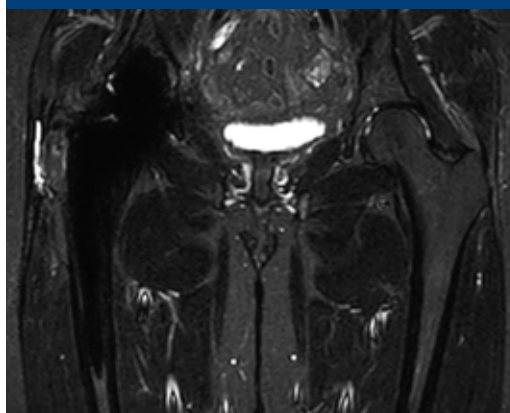
PDw TSE – High bandwidth
1.1 x 1.4 x 3.0 mm, 2:38 min



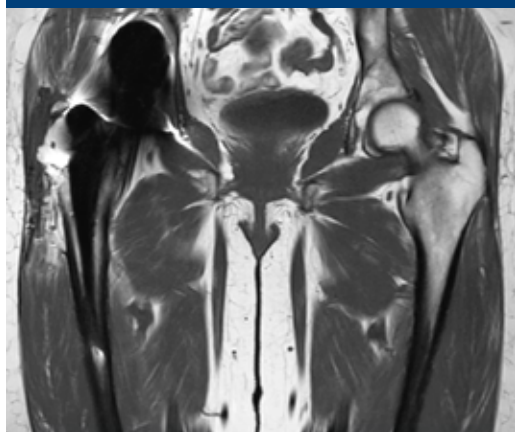
PDw TSE – O-MAR
1.1 x 1.4 x 3.0 mm, 4:10 min



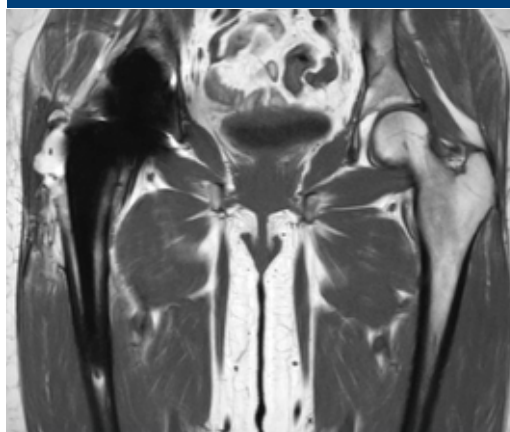
STIR – High bandwidth
1.7 x 2.0 x 5.0 mm, 1:51 min



STIR – O-MAR
1.7 x 1.9 x 5.0 mm, 2:37 min



T1w TSE – High bandwidth
1.1 x 1.4 x 5.0 mm, 0:58 min



T1w TSE – O-MAR
1.1 x 1.4 x 5.0 mm, 2:17 min

