



PHILIPS

SyntAc

MR software

Exploring neuro-radiology with **Synthetic MR imaging**

Philips SyntAc for 1.5T systems

Key benefits

- One scan with multiple contrasts
- Allows for brain segmentation
- To be used with 3rd party software* to produce synthesized MR images

With an advanced acquisition scheme, involving multiple echoes and multiple delays, SyntAc allows you to obtain images with a variety of contrasts at one go. These images can then be used to synthesize specific MR contrasts (T2, T1, FLAIR), to calculate brain parenchyma fractions and provide maps of brain parenchyma.

* Synthetic MR, AB, Sweden

This content is intended for countries other than the USA

SyntAc

	Technical characteristics	Additional information
Main application	Brain	May be used for T1 and T2 mapping, to synthesize images of different contrasts and to calculate brain parenchyma fractions. User defined segmentation is also allowed.
Acquisition	Multi echo-, multi delay TSE and GRASE	
Image types	T1, T2, PD, FLAIR T1 and T2 maps	Images synthesized by syMRI*. Free choice of TE/TR/TI on the synthesized images
Field strength	1.5T	
Parallel imaging	Compatible with dS SENSE	Leverages the efficient, high SNR, dS SENSE parallel imaging technology to reduce scan time

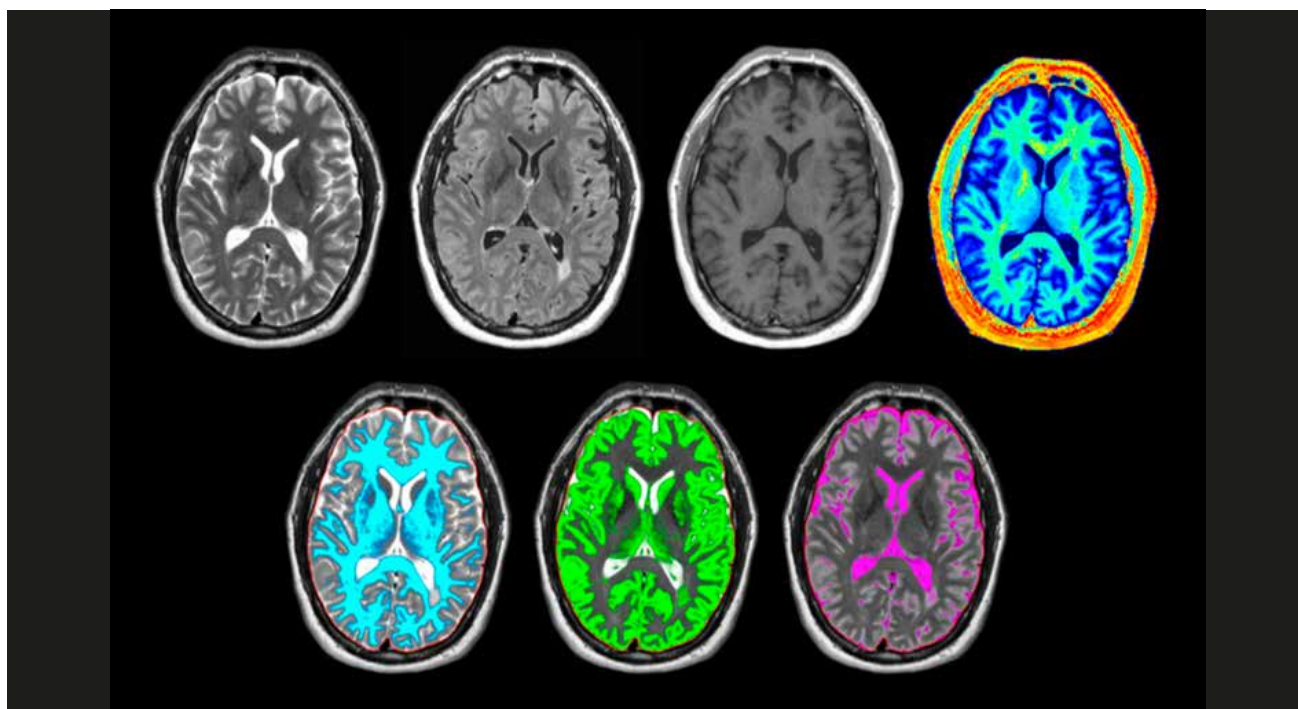


Image courtesy: synthetic MR, AB, Sweden

This material is not intended for distribution in the USA.

© 2015 Koninklijke Philips N.V. All rights reserved.
Specifications are subject to change without notice.
Trademarks are the property of Koninklijke Philips N.V.
(Royal Philips) or their respective owners.

4522 991 15381 * NOV 2015



How to reach us
Please visit www.philips.com/healthcare
healthcare@philips.com