

**PHILIPS**

Outdoor lighting

Petrol stations



Case study

Mini 300 LED-gen2

# Maximum benefit

from LED lighting  
for TOTAL petrol stations

Superior and safe lighting that is easy to control. That saves 70% on energy consumption too. The new LED lighting for TOTAL petrol stations in the Netherlands and Belgium demonstrates that these characteristics go together perfectly.





Before



After

“The difference is awesome. It’s a lot **brighter and clearer** now”

From **200**  
to **400** lux...  
while saving  
**70%**

**Marleen Baudoin, petrol station manager TOTAL Kerkeind**

**Brighter and clearer**

“The difference is truly awesome,” says Marleen Baudoin, petrol station manager for TOTAL Kerkeind on the A58 between Eindhoven and Tilburg, The Netherlands. She points to the new LED lighting that was recently fitted under the canopy. “The forecourt, where people refuel their vehicles, is now a lot brighter, making it easier to see what’s going on.” Her petrol station is one of the first where existing lighting has been replaced with Philips’ LED lighting. This ‘retrofit’ took place as a result of a lighting improvement test at TOTAL’s petrol stations that proved to be so successful that 174 TOTAL petrol stations in the Netherlands and Belgium have been equipped with this lighting solution.

around the pump. This was unpleasant for customers, employees and ultimately damaging to the brand. In addition to making that area brighter and more attractive, the switch to LED lighting also provided the opportunity to save on energy consumption. Together with Philips, a study was conducted to determine the best lighting solution for TOTAL. The successful test at petrol stations, where the existing HPI400 W lamps were replaced with the Mini 300 LED gen2, provided the answer. Now it was possible to establish exactly how many LED luminaires were required and where they had to be positioned to achieve the maximum effect. This approach can be applied universally to every petrol station.

**Best lighting solution**

According to TOTAL, many of their petrol stations were insufficiently lit in the area

**Attention value**

To improve visibility, the current light level at the petrol stations will be increased

**Mini 300  
LED gen2**





Pleasant for  
**customers,**  
**employees** and  
**the brand**

considerably, from 200 to 400 lux around the pumps. Thanks to the integrated presence and twilight sensors, extra energy can be saved because light levels drop to 70% if there are no motorists near the pumps. The presence and twilight sensors only have to be set once with the app on the telephone and then the petrol station manager can leave the system to do its job. The visibility of the forecourt from the store is improved dramatically which is beneficial for both employees and customers. The color rendition of the light increases the feeling of social safety – faces, vehicles and, not unimportantly, license plates can be seen more clearly. This improves security as well because better lighting enhances the quality of the security camera images. Above all, the TOTAL petrol stations now have better visibility from the highway. Through their improved illumination the buildings are more striking, which can certainly be beneficial for sales.

#### Saves in many ways

The switch to new LED lighting will give many TOTAL petrol stations a positive boost. Additionally, presence detection will help to save energy and reduce costs. While it's difficult to predict how much will be saved because every station is slightly different,

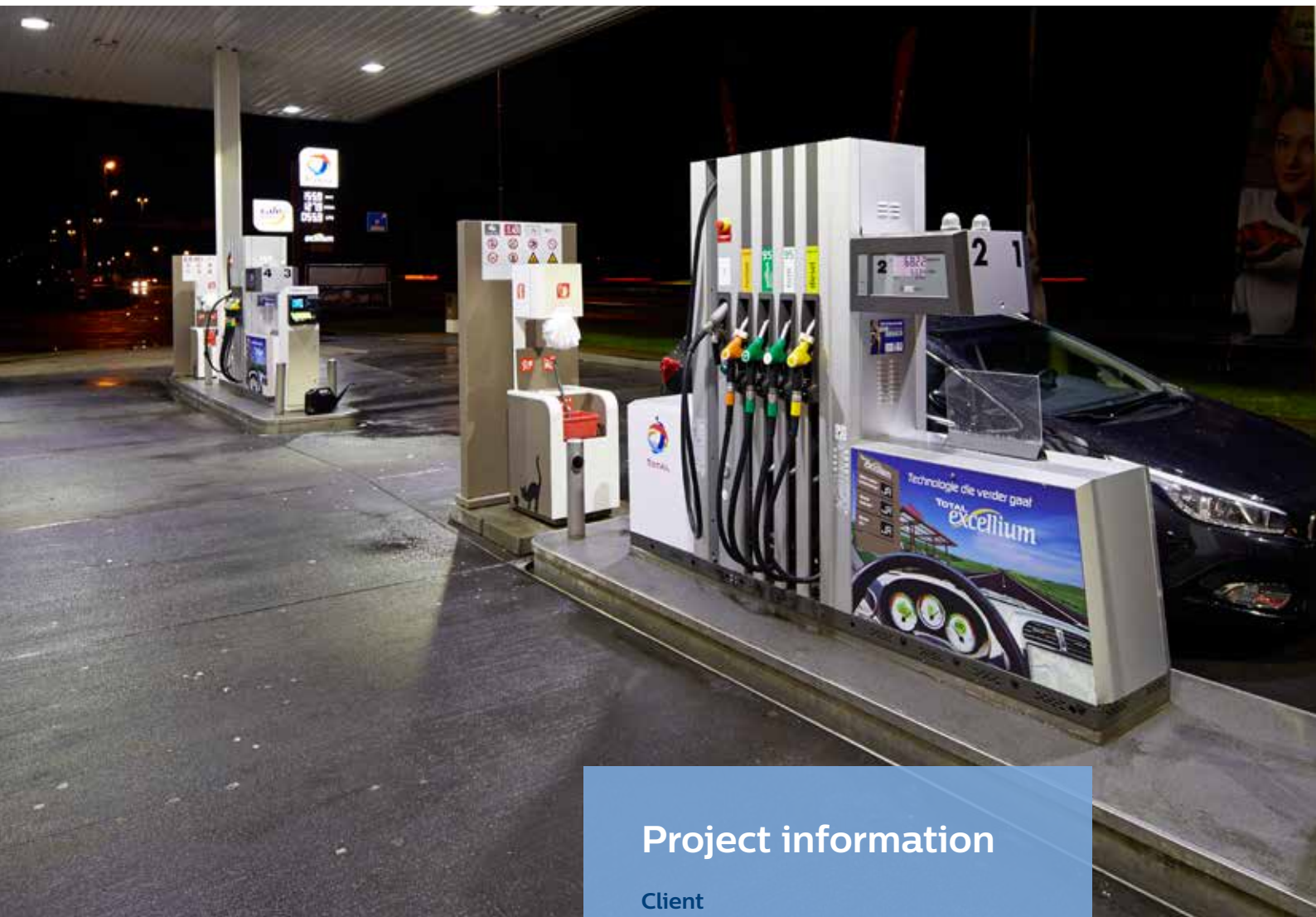


the petrol station at Kerkeind has demonstrated energy and cost savings of 70%! The station could save even more by dimming the lights further when no one is present at the pump. The new LED lighting has an added benefit for Marleen Baudoin, petrol station manager for TOTAL Kerkeind: "Replacing defective lamps was a regular task in the past. Apart from all the bother, it was also very expensive. This LED lighting has a life expectancy of more than 10 years. It's terrific that we're free of that chore."



**30%**  
dimming without  
discernable  
consequences

“No replacing lamps for the foreseeable future. Great!”



## Project information

**Client**

TOTAL Benelux

**Location**

Moergestel, Netherlands

International Key Account

Manager Philips

Jan Poot

Philips product

Mini 300 LED gen2



©2015 Koninklijke Philips N.V.  
All rights reserved. Reproduction in whole or in part is prohibited without the prior written consent of the copyright owner. The information presented in this document does not form part of any quotation or contract, is believed to be accurate and reliable and may be changed without notice. No liability will be accepted by the publisher for any consequence of its use. Publication thereof does not convey nor imply any license under patent or other industrial or intellectual property rights.