

PHILIPS

Essential SmartBright
Downlight 2

10W – 23W



The **energy efficient** **LED replacement** for conventional downlights

The Philips Essential SmartBright Downlight 2 is a functional downlight that is the ideal replacement for conventional downlights. It's **affordable and easy to install and delivers high energy savings** without compromising on light quality.

Features and benefits

- Reliable LED downlight for residential and general lighting applications.
- Good light quality and comfortable light.
- Easy to install and IC-F rated.
- 3 years warranty.

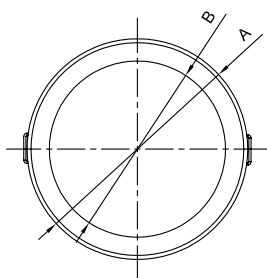
Product data

Model	Essential SmartBright Downlight 2 (DNO28B)			
Type	LED8	LED12	LED15	LED20
Equivalent of	50W halogen	2x23W CFLi	2x26W CFLi	2x32W CFLi
Power	10W	15W	18W	23W
System lumen	800lm	1200lm	1500lm	2000lm
Power factor	>0.9	0.75		
Type	Trailing/ leading edge dimmable**		Fixed output	
Electrical class	Class I		Class II	
Input voltage	220V-240V, 50/60Hz			
CCT	3000K (WW) and 4000K (NW)			
CRI	>80			
SDCM	<5			
UGR	UGR22 - 25			
Beam angle	110°			
Operating temperature	25°C (-20°C < ta < 40°C)			
Lifetime (L70)*	25,000 hours			
IP rating	IP20			
Insulation rating	IC-F			
Mounting type	Recessed			
Housing colour	White powder coated			
Cable	1.2m pre-wired AU flex & plug			
Material	Diffuser: PC			
Application	Residential, general lighting areas, corridors, retail			

*When a new fitting reaches 70% of full potential.

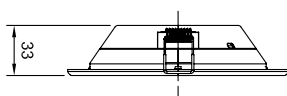
**Compatible with selected dimmers. Please refer to dimming list below.

Dimensions



Model	Width (mm)	Length (mm)	Height (mm)	Weight (kg)
DNO28B LED8	Ø90-95	Ø115	33	0.3
DNO28B LED12	Ø150-155	Ø175	33	0.37
DNO28B LED15	Ø175-180	Ø200	33	0.44
DNO28B LED20	Ø200-205	Ø225	33	0.54

*Dimensions shown above are nominal measurement. Slight variation in dimension may occur in production.



Order placement information

Commercial code	12NC	Description	Specification
ESB2LED8WWD	911401816897	DN028B LED8/WW PSR-E I D90 CAU	10W, 800lm, 3000K, Trailing/ leading edge dimmable, cut-out: 90mm
ESB2LED8NWD	911401816997	DN028B LED8/NW PSR-E I D90 CAU	10W, 800lm, 4000K, Trailing/ leading edge dimmable, cut-out: 90mm
ESB2LED12WWF	911401817097	DN028B LED12/WW PSU II D150 CAU	15W, 1200lm, 3000K, Fixed output, cut-out: 150mm
ESB2LED12NWF	911401817197	DN028B LED12/NW PSU II D150 CAU	15W, 1200lm, 4000K, Fixed output, cut-out: 150mm
ESB2LED15WWF	911401817297	DN028B LED15/WW PSU II D175 CAU	18W, 1500lm, 3000K, Fixed output, cut-out: 175mm
ESB2LED15NWF	911401817397	DN028B LED15/NW PSU II D175 CAU	18W, 1500lm, 4000K, Fixed output, cut-out: 175mm
ESB2LED20WWF	911401817497	DN028B LED20/WW PSU II D200 CAU	23W, 2000lm, 3000K, Fixed output, cut-out: 200mm
ESB2LED20NWF	911401817597	DN028B LED20/NW PSU II D200 CAU	23W, 2000lm, 4000K, Fixed output, cut-out: 200mm

Dimmers compatible with ESB2LED8WWD and ESB2LED8NWD

Brand	Model	Max. fitting per dimmer
Clipsal	32E450UDM	8
Clipsal	32ELEDM	8
HPM/ Legrand	Cat EM400TR	8
SAL	SDA450	8
PDL	624TM	8
PDL	654M	8

