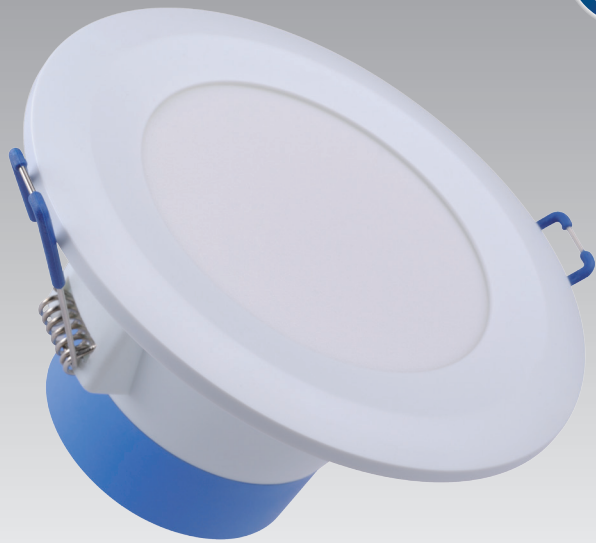


PHILIPS

Essential SmartBright
Downlight G3

800lm, 10W

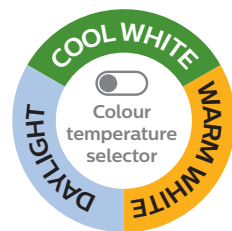


Select the **right** **colour temperature** to suit your style

This hassle-free downlight provides you with the flexibility to select the perfect colour temperature for the application. Integrated with trailing/ leading edge dimming capability, this affordable and easy to install fitting delivers high energy savings without compromising on light quality.

Features and benefits

- Select from 3 colour temperatures with a slide of the dial
- Trailing/ leading edge dimmable
- Brush aluminium trim included
- Easy to install and IC-4 rated
- 3 years warranty



Slide dial to select the preferred colour temperature

Product data

Model	Essential SmartBright Downlight G3 (DN029B-2)
Type	LED8
Equivalent of	50W halogen
Power	10W
System lumen	800lm
Power factor	0.8
Type	Trailing/ leading edge dimmable**
Electrical Class	Class II
Input Voltage	220V-240V, 50/60Hz
CCT	Select from 3000K (WW), 4300K (CW), 6500K (DL) with the selector dial
CRI	>80
Beam Angle	105°
Operating Temperature	25°C (-20°C < ta < 40°C)
Lifetime (L70)*	25,000 hours
IP rating	IP44 (front)
Insulation rating	IC-4
Mounting Type	Recessed
Housing colour	RAL9003
Accessory	Brush aluminium trim, click on to fitting
Cable	1.2m pre-wired AU flex & plug
Material	Diffuser: Polycarbonate (PC) Housing: Polybutylece Terephthalate (PBT)
Application	Residential, general lighting areas, corridors, retail

* When a new fitting reaches 70% of full potential

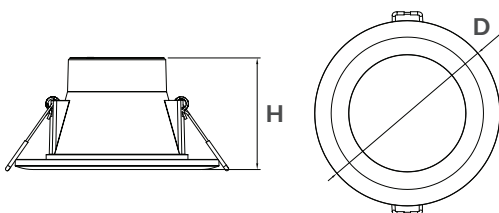
** Compatible with selected dimmers, please refer to dimming list below

Recommended dimmers

Brand	Model	Max. fitting per dimmer	Dimming range
Clipsal	32E450UDM	8	10%-100%
Clipsal	32ELEDM	8	10%-100%
Legrand	Cat 400T	8	10%-100%
SAL	SDA450	8	10%-100%
Diginet	MEDM	8	10%-100%

Philips recommends to select from this list of dimmers which are tested for compatibility with the downlight.

Dimensions



Model	Cut-out/ B (mm)	Diameter/ A (mm)	Height C (mm)	Weight (kg)
DN029B-2 LED8	Ø 85-95	Ø 115	64	0.22

Dimensions shown above are nominal measurement.
Slight variation in dimension may occur in production.

Order placement information

Commercial Code	EAN	12NC	Description	Specification
ESB3LED8CCTTLE	8710163314709	911401851597	DN029B-2 LED8/CCT PSR-E D90 CAU	10W, 800lm, 3000K/4300K/6500K, Trailing/ leading edge dimmable, cut-out: 85mm

© 2017 Koninklijke Philips N.V.

All rights reserved. Reproduction in whole or in part is prohibited without the prior written consent of the copyright owner.

The information presented in this document does not form part of any quotation or contract, is believed to be accurate and reliable and may be changed without notice. No liability will be accepted by the publisher for any consequence of its use. Publication thereof does not convey nor imply any license under patent or other industrial or intellectual property rights.

Version: July 2017



Philips Lighting Australia
65 Epping Road,
North Ryde NSW 2113, Australia
Ph: 1300 304 404
www.philips.com.au/lighting