

PHILIPS

Installation Guide

InstantFit T8 Lamps

Compatible with fluorescent
T12 rapid start magnetic ballasts



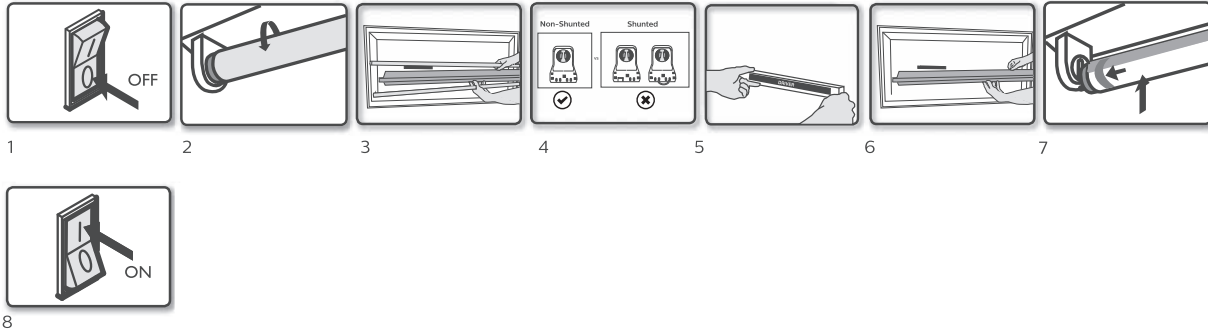
The Installation Guide contains important information and notes regarding the installation and operation of the InstantFit T8 lamps. Please note the important points below:

- Philips InstantFit T8 LED lamps are suitable to replace T12 fluorescent lamps
- Philips InstantFit T8 LED lamps require non-shunted G13 (medium bi-pin) lamp holders
- Philips InstantFit T8 LED lamps are intended for use in conjunction with a magnetic ballast. Please do not connect the lamp directly to mains voltage 120/220/240/277 VAC.
- Ensure all parts and accessories are in the package, including instruction guide, label, driver and InstantFit T8 lamp
- Modifications to the product void the warranty
- Compatible with T12 rapid start magnetic ballasts
- Please refer to www.philips.com/instantfit for the latest ballast compatibility guide



Philips InstantFit T8 LED Lamps

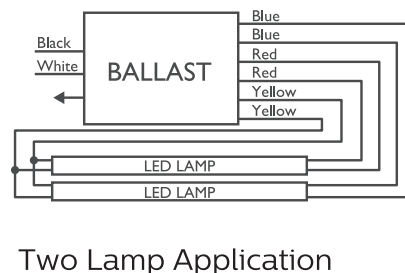
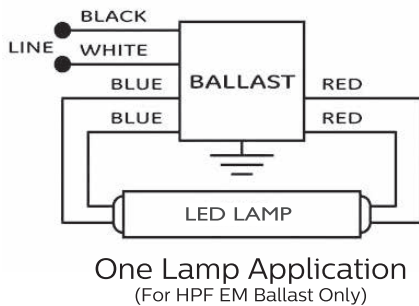
Instructions



1. Switch off power to the luminaire.
2. Remove diffuser (if provided) and existing fluorescent lamps.
3. Remove ballast cover plate.
4. Verify lamp-holders are non-shunted type*.
5. Verify the ballast installed is listed in Philips compatibility guide (www.philips.com/instantfit).
If the ballast model number is included in compatibility list, skip step 5a, and jump to step 6.
 - a. If the ballast is not on compatibility guide, the ballast must be replaced with one that is listed on the compatibility guide. Please refer to the wiring diagram below.
6. Reattach the ballast cover plate, ensuring no wiring is pinched.
7. Install new Philips InstantFit T8 LED lamps into lamp-holders. Ensure LED lamps are properly and firmly seated in the lamp-holders.
8. Switch on power to the luminaire.

*Perform a visual inspection to ensure lampholders are not damaged or loose. Replace any damaged, corroded, charred, blackened, or loose lampholders.

Wiring Diagram:



- These wiring diagrams are intended to be shown as the most general wiring method. Please consult the ballast wiring diagram for verification of the proper wiring method.

Philips InstantFit T8 LED Lamps

Luminaire Description

- If a remote starter is present in the original luminaire, it must be removed (and bypassed) before installing Philips InstantFit T8 LED lamps
- Philips InstantFit T8 LED lamps can be installed in UL listed surface mount, or type IC or non-IC recessed fluorescent luminaires with or without a diffuser that use linear T12 fluorescent lamps
- Philips InstantFit T8 LED lamps are intended to retrofit up to four maximum, four-foot lamps in a single luminaire
- Please make sure that the existing luminaire's dimensions are larger than the dimensions described in table 1 below

Table 1 - Minimum Luminaire Dimensions

Philips InstantFit T8 LED lamp Length [ft]	Max. number of tubes [with or without diffuser]	Minimum Luminaire dimensions [length x Width x Height] [cm]
4	4	120 x 58 x 8.2



1. USE ONLY WITH COMPATIBLE FLUORESCENT BALLASTS. SEE INSTRUCTIONS OR WEBSITE.

2. CAUTION RISK OF FIRE - IF THE LAMP OR LUMINAIRE EXHIBITS UNDESIRABLE OPERATION (BUZZING, FLICKERING, ETC.), IMMEDIATELY TURN OFF POWER, REMOVE LAMP FROM LUMINAIRE AND CONTACT MANUFACTURER.

ATTENTION RISQUE DE FEU - SI LA LAMPE OU LE LUMINAIRE MONTRE DES SIGNES D'OPÉRATION INDÉSIRABLE (BRUIT, VIBRATION, CLIGNOTEMENT, ETC.), ALORS COUPEZ IMMÉDIATEMENT LE COURANT, RETIREZ LA LAMPE DE L'APPAREIL D'ÉCLAIRAGE ET CONTACTEZ AVEC LE FABRICANT.

3. THIS LAMP ONLY OPERATES ON MAGNETIC BALLASTS. IF LAMP DOES NOT LIGHT WHEN THE LUMINAIRE IS ENERGIZED, REMOVE LAMP FROM LUMINAIRE AND CONTACT LAMP MANUFACTURER OR QUALIFIED ELECTRICIAN.

CETTE LAMPE FONCTIONNE SEULEMENT AVEC UN BALLAST MAGNÉTIQUE. SI LA LAMPE NE S'ALLUME PAS QUAND L'APPAREIL D'ÉCLAIRAGE EST EN FONCTION, ENLEVEZ LA LAMPE DE L'APPAREIL D'ÉCLAIRAGE ET CONTACTEZ LE FABRICANT DE LAMPE OU UN ÉLECTRICIEN QUALIFIÉ.

4. DO NOT INSTALL THIS LAMP IN A PRE-HEAT LUMINAIRE.

5. THIS DEVICE IS NOT INTENDED FOR USE WITH EMERGENCY EXITS

6. WARNING - Risk of fire or electric shock. LED Retrofit Kit installation requires knowledge of luminaires electrical systems. If not qualified, do not attempt installation. Contact a qualified electrician.

AVERTISSEMENT – RISQUE D'INCENDIE OU DE CHOC ÉLECTRIQUE. L'INSTALLATION DE CE NÉCESSAIRE DE MODERNISATION EXIGE UNE PERSONNE FAMILIÈRE AVEC LA CONSTRUCTION ET LE FONCTIONNEMENT DU SYSTÈME ÉLECTRIQUE DU LUMINAIRE ET DES RISQUES ASSOCIÉS. TOUTE PERSONNE QUI N'EST PAS QUALIFIÉE NE DOIT FAIRE AUCUNE TENTATIVE D'INSTALLATION ET DOIT CONTACTER UNE PERSONNE QUALIFIÉE.

7. WARNING - Risk of fire or electric shock. Install this kit only in luminaires that have the construction features and dimensions shown in the photographs and/or drawings and where the input rating of the retrofit kit does not exceed the input rating of the luminaire.

AVERTISSEMENT – RISQUE D'INCENDIE OU DE CHOC ÉLECTRIQUE. N'INSTALLER CE NÉCESSAIRE QUE DANS LES LUMINAIRES DONT LES CARACTÉRISTIQUES DE CONSTRUCTION ET LES DIMENSIONS SONT CONFORME À CELLES ILLUSTRÉES DANS LES PHOTOS ET/OU LES DESSINS ET DONT LA PUISSANCE D'ENTRÉE NOMINALE DU NÉCESSAIRE DE MODERNISATION NE DÉPASSE PAS CELLE DU LUMINAIRE.

8. WARNING - To prevent wiring damage or abrasion, do not expose wiring to edges of sheet metal or other sharp objects.

Philips InstantFit T8 LED Lamps

9. WARNING: To avoid potential fire or shock hazard, do not use this retrofit kit in luminaires employing shunted bi-pin lampholders. Note: Shunted lamp holders are found only in fluorescent luminaires with Instant-Start ballasts. Instant-start ballasts can be identified by the words "Instant Start" or "I.S." marked on the ballast. This designation may be in the form of a statement pertaining to the ballast itself, or may be combined with the marking for the lamps with which the ballast is intended to be used, for example F40T12/IS. For more information, contact the LED luminaire retrofit kit manufacturer.

10. Installers should not disconnect existing wires from lampholder terminals to make new connections at lampholder terminals. Instead installers should cut existing lampholder leads away from the lampholder and make new electrical connections to lampholder lead wires by employing applicable connectors.

11. THIS RETROFIT KIT IS ACCEPTED AS A COMPONENT OF A LUMINAIRE WHERE THE SUITABILITY OF THE COMBINATION SHALL BE DETERMINED BY AUTHORITIES HAVING JURISDICTION.

LE NÉCESSAIRE DE MODERNISATION EST ACCEPTÉ À TITRE DE COMPOSANT D'UN LUMINAIRE LORSQUE LA PERTINENCE DE LA COMBINAISON DOIT ÊTRE DÉTERMINÉE PAR PAR LES AUTORITÉS COMPÉTENTES;

12. Do not make or alter any open holes in an enclosure of wiring or electrical components during kit installation.

