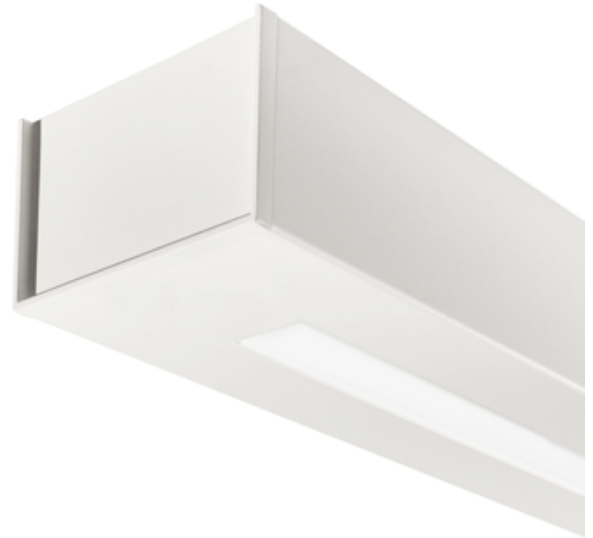


Minimalist scale, unequaled performance that delivers

CHOPSTICK SUSPENDED LED



SEMI-INDIRECT, MESOOPTICS LENS
3000K, 4800 LM/4FT

Project: _____

Spec Type: _____

Catalog No: 7505LCCxN _____

Qty _____

Line Notes: _____



Ordering guide

Product Type	Source	Color *	Lumens *	Lower Optics	Upper Optics	Run Length	Wiring †	Voltage	Driver ‡	Color
<input type="text" value="7505"/>	<input type="text" value="L"/>	<input type="text" value="C"/>	<input type="text" value="C"/>	<input type="text" value="x"/>	<input type="text" value="N"/>	<input type="text"/>	<input type="text"/>	<input type="text"/>	<input type="text"/>	<input type="text"/>
Chopstick "Susp Semi-Indirect	L LED	A 4000K B 3500K C 3000K	C 4800 lm/4ft E 3400 lm/4ft	Q 4ft MesoOptics S 6ft MesoOptics	N None	04 4' 06 6' 08 8'	1 1 cct 3 1 cct w/ EM cct 7 1 cct w/ Dimming 8 1 cct w/ TV B 2 cct A/B	1 120V 2 277V 3 347V	E Standard	W White T Titanium Silver B Black C Custom Color

* Nominal values † Consult website for complete list of standard wiring options ‡ Driver details on following pages

Mounting Hardware

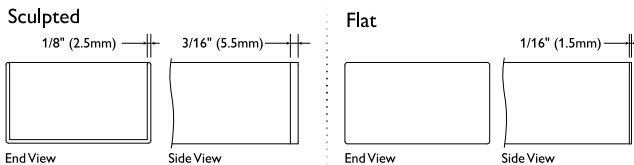
Mount Type
Consult separate mounting spec sheet for mount type options

Suspension Length
Distance from ceiling to top of luminaire in inches

Endcaps -

Integrated Controls Please indicate with check mark.

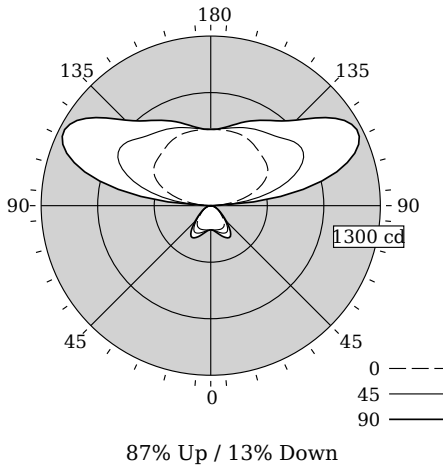
Response Daylight Single Zone (DS)



CHOPSTICK SUSPENDED LED

Semi-Indirect, MesoOptics Lens

Photometry



LED Lighting facts
A Program of the U.S. DOE

Light Output (Lumens) 4526
Watts 46.4
Lumens per Watt (Efficacy) 97

Color Accuracy
Color Rendering Index (CRI) 82

Light Color
Correlated Color Temperature (CCT) 3031 (Bright White)

Warm White | Bright White | Daylight
2700K | 3000K | 4500K | 6500K

Warranty** Yes

All results, except LED Lumen Maintenance, are according to IESNA LM-79-2008 Approved Method for the Electrical and Photometric Testing of Solid-State Lighting. The U.S. Department of Energy (DOE) verifies product test data and results.

** See www.lightingfacts.com/products for details.

Registration Number: F46Z-QGOTYG (3/20/2014)
Model Number: 7505LCCxx04
Type: Luminaire - Linear

Total Output	4526 lm
Efficacy	97.5 lm/W
CCT	3031K
CRI	82
R9	8
Distribution	87% Up / 13% Down
Peak/Zenith Ratio	2.16
Peak Output	1263 cd @ 118°
Meets RP-1-04 recommendations for VDT-Intensive spaces	

Values per 4ft unit

Fixture photometry has been conducted by an NVLAP accredited testing laboratory in accordance with IESNA LM-79:2008

Lumen maintenance of the LEDs has been tested by the manufacturer in accordance with IESNA LM-80:2008

IES files for this and other photometric options can be downloaded online at www.lightingproducts.philips.com

Candela Distribution

Vertical Angle	Horizontal Angle				Zonal Lumens
	0	22.5	45	67.5	
0	185	185	185	185	0
5	188	185	188	189	18
15	192	194	208	219	59
25	196	205	233	260	107
35	180	193	226	256	138
45	130	135	151	164	170
55	81	83	89	93	80
65	49	50	53	53	51
75	21	24	24	24	26
85	4	5	7	7	7
90	0	0	0	0	0
95	92	112	172	277	330
105	302	365	548	845	1000
115	457	545	774	1091	1256
125	528	615	817	1050	1167
135	548	607	741	871	928
145	573	607	694	769	798
155	590	608	657	700	716
165	590	597	618	633	639
175	586	583	589	590	589
180	585	585	585	585	0

Coefficients of Utilization (%)

RCR	Ceiling: 80				70				50				0			
	70	50	30	10	70	50	30	10	70	50	30	10	70	50	30	10
0	98	98	98	98	86	86	86	86	63	63	63	63	13	13	13	13
1	90	86	82	79	78	75	72	55	53	52	51	7	7	7	7	7
2	82	75	69	64	71	66	61	48	45	43	10	10	10	10	10	10
3	75	66	59	54	65	58	52	43	39	36	8	8	8	8	8	8
4	68	58	51	45	59	51	45	38	34	31	7	7	7	7	7	7
5	62	52	44	38	54	45	39	34	29	26	6	6	6	6	6	6
6	57	46	38	33	50	41	34	30	26	23	6	6	6	6	6	6
7	53	41	34	29	46	36	30	27	23	20	5	5	5	5	5	5
8	49	37	30	25	42	33	27	25	20	17	4	4	4	4	4	4
9	45	34	27	22	39	30	24	22	18	15	4	4	4	4	4	4
10	42	31	24	19	37	27	21	20	16	14	4	4	4	4	4	4

Avg. Luminance (cd/m²)

Vertical Angle	Horizontal Angle		
	0	45	90
55	4171	4574	4776
65	3378	3652	3652
75	2385	2683	2832
85	1328	2213	2656

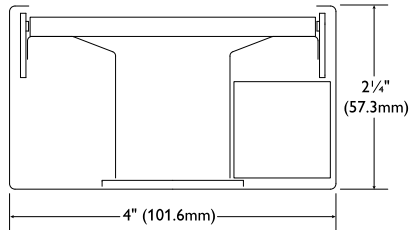
Electrical Specifications

Input Voltage	120V	277V
Input Power	46.4W	45.8W
Input Current	0.391A	0.178A
Power Factor	0.988	
Total Harm. Distortion	13.2%	
Tested values – contact technical support for rated values. Off-state power zero unless certain controls are specified.		

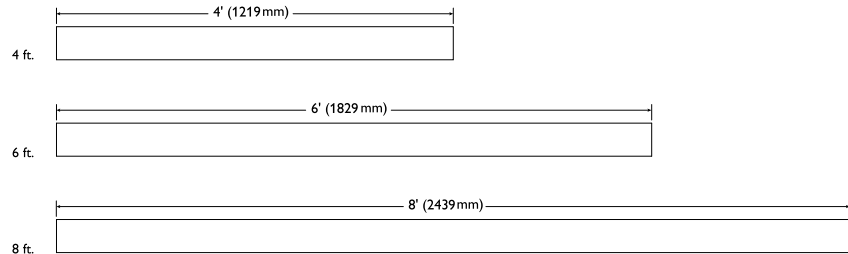
CHOPSTICK SUSPENDED LED

Semi-Indirect, MesoOptics Lens

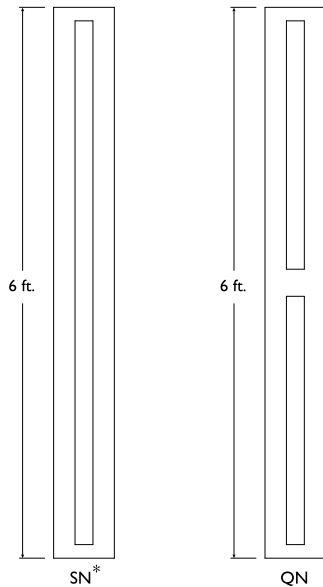
Options and Details



Modules



Optics & Styles



*SN optic is only available in 6ft modules

Housing

Precision formed 20 gauge cold-rolled steel.

Weight

Maximum 3.0lb/ft.

Optical System

A low-profile light guide panel is edge lit by an LED array. The light guide couples and transmits the light via total internal reflection, then the etched surface of the panel optimizes the light extraction to create a semi-indirect (suspended) or direct/indirect (wall) distribution. Light is purified and controlled by MesoOptics film as it passes through the nonglare acrylic lens.

Standard Driver

Dimming: 0-10V, 5-100%. Output is Class 2 rated.

Lumen Maintenance

At an ambient temperature of 25°C, the LED lumen maintenance expectation is L_{80} (12k) 70,000 hrs.

Mounting

Suspended: tamper-resistant aircraft cable grippers provide infinite vertical adjustment capability. Aircraft cable, crimp and cable gripper are independently tested to meet stringent safety requirements. **Wall:** Steel mounting brackets provided, spaced 4ft on center, fixture held 3/4" from wall.

Joints

Self-aligning joining system with hands-free pre-joining wire access.

Endcaps

Diecast aluminum endcaps, available in flat (standard) or edge sculpted.

Electrical

Factory pre-wired to section ends with quick-wire connectors.

Approvals

Certified to UL, CSA and IES standards.

Finish

High quality powder coated, available in matte white, black or titanium silver. Other factory and custom colors available on request.

Environment

Rated for dry or damp locations in operating ambient temperatures 0-40°C (32-104°F).

Due to continuing product improvements, Philips Ledalite reserves the right to change the specifications without notice.



©2014 Koninklijke Philips N.V. All rights reserved.
Specifications are subject to change without notice.
www.philips.com/luminaires

7505LCCxN.pdf 05.14 page 3 of 3

Philips Lighting
North America Corporation
200 Franklin Square Drive
Somerset, NJ 08873
Phone: 855-486-2216

Philips Lighting Company
281 Hillmount Road
Markham ON, Canada L6C 2S3
Phone: 800-668-9008