



EnvisionManager System Software

System control, monitoring and management

EnvisionManager is a multi-user control system management and monitoring software tool. It provides users with full visibility of the lighting and energy management system status and performance, while enabling simple local or global system adjustments.

- Complete control — Initiate system changes, from a single lamp to the lighting state of an entire multi-story building, with a single mouse click.
- Simple scheduling — Intuitive tools enable the user to schedule and manage events such as 'office space to day mode' or 'car parks to after-hours security mode' with ease.
- Easy integration — Integration tools allow the user to manage more than just lighting. HVAC, motorized window shades and other systems are integrated and accessible through EnvisionManager.
- Manage routine maintenance — Full support of maintenance functions means that routine tasks can be undertaken without the involvement of a system specialist. Faults are automatically flagged for attention, ensuring that the facility continues to function and operational downtime is minimized.
- Strike the balance — Alternate energy management schemes can be initiated automatically or manually, as required. This allows Facility Managers to balance energy efficiency with the needs of the occupants and can be initiated on either a tenancy or building-wide basis.
- Identify energy-saving initiatives based on current use — EnvisionDashboard presents live data as simple visual display. It mines raw data for analysis, to both establish a benchmark for future improvements and pinpoint exactly where energy is being used.
- Tailored control of individual light fittings — EnvisionSwitch resides in the task bar of a user's computer and allows task lighting to be tailored to individual preferences. Linking back to the lighting control system ensures lights are not left on unnecessarily.

For detailed product information, please refer to the product information pages at www.philips.com/lightingcontrolsna.

PHILIPS

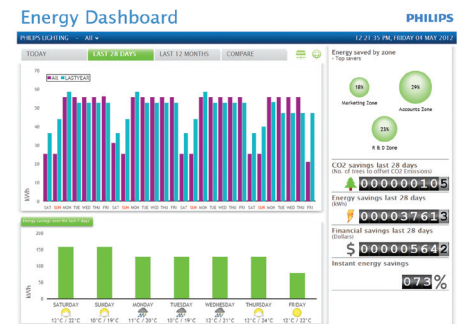
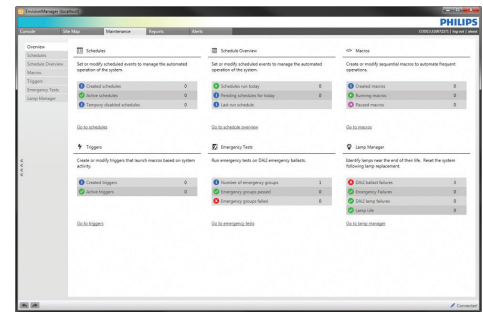
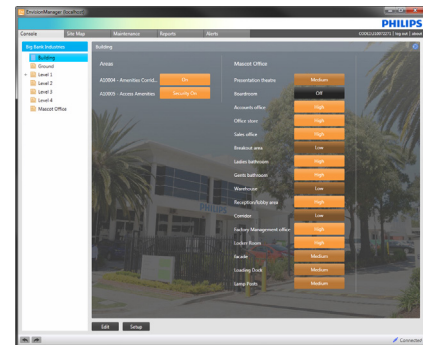
dynalite

Specifications

Due to continuous improvements and innovations, specifications may change without notice.

Item	Specification	Details
Interface	LAN Interface	Ethernet - TCP/IP
	DyNet Interface	One serial interface, via USB or RS-232 port
Hardware	Server Hardware Requirements*	<p>Hardware Platform: PC Operating System: Windows 7 SP1/Windows 8/Windows 2008 R2 Server Processor: Intel Xeon @ 3.33 GHz (Xeon 3000 series better with 4 cores) Hard Disk: 300 GB (10 GB min requirement for application) System Memory: 12 GB Serial Ports: One free RS-232 or USB port Network: Ethernet network card 1 x Philips Dynalite PC Node adaptor We recommend powering the PC from an uninterruptable power supply (UPS)</p> <p>*Note: Minimum requirements will vary depending on the size of the site and the number of simultaneously connected clients.</p>
	Client Machine Minimum Requirements for EnvisionManager	<p>Hardware Platform: PC Operating System: Windows 7 SP1 and Windows 8 Processor: 1 Inter Core i5 / i7 @ 2.30 GHz Hard Disk: 10 GB min requirement for application System Memory: 4 GB Network: Ethernet network card</p>
	Client Machine Minimum Requirements for EnvisionSwitch	<p>Hardware Platform: PC Operating System: Windows 7 SP1</p>
Options	Optional Client	EnvisionDashboard EnvisionSwitch
	Optional BMS Interfaces	OPC Interface
Security	Client Security	Integrates with and uses Windows Domain Security Groups and Users. Rights configurable on a User and Group basis.
Options & Ordering	Standard Product	ENVISIONMANAGER (Philips 12 NC - SW913703089909) Installer download from Philips Dynalite Distributor site on 30 day trial licence.

Interface



Philips Lighting North America
 200 Franklin Square Dr
 Somerset, NJ, United States
 Tel: 1-800-526-2731
 Email: controls.support@philips.com
 Web: www.philips.com/lightingcontrolsna

Philips Lighting Canada
 281 Hillmount Road
 Markham, Ontario L6C 2S3
 Canada

Specifications subject to change without notice. ©WMGD Pty Ltd Trading as Dynalite. Unit 6, 691 Gardeners Road Mascot 2020 Australia. ABN 33 097 246 921. All rights reserved. Dynalite, DyNet and associated logos are the registered trademarks of WMGD Pty Ltd. Not to be reproduced without permission.