


The background of the entire page is a photograph of a modern, multi-level office lobby. The space features a curved white ceiling with recessed lighting, glass railings on upper levels, and a polished floor that reflects the surroundings. In the foreground, a large digital display shows a close-up of a woman's face. In the background, another display shows a tennis player. The overall atmosphere is professional and high-tech.

PHILIPS

Professional
Display Solutions

2016

Game Changing
Innovations

A woman with blonde hair is shown in profile, looking out of a window at night. The background is dark with out-of-focus city lights in yellow, orange, and red, creating a bokeh effect. The woman is wearing a dark blue sweater. Her right hand is visible, resting on the window frame.

Leverage your business
**with our game changing
innovations**



From inventing the video wall in 1984 to bringing Ambilight to the market, Philips has always been at the forefront of display innovation. This year is no different, with the release of three incredible, game changing innovations.

Whether you're looking for a signage solution, or to enliven the guest experience at your hotel, CMND makes it easy to handle your business. This intuitive software allows you to do everything from remote display management to updating and pushing out content. We also know that speed is king, which is why we've integrated the Android OS into our signage and hospitality displays. And for the especially discerning viewer, give them the experience they deserve with Ambilux, the next step in the evolution of Ambilight.



Powered by Android™

Technology designed for all. The Android OS means smarter, faster, and more intuitive professional displays.

For Hospitality



- **Faster speed** when it comes to guest interaction with the display
- **Access to android apps***
- **More visually appealing UI** with more features directly integrated into the UI

For Signage



- **Use your own app****
play content directly from the display
- **Automatic Screenshots**
for Proof of Play
- **Machine to Machine communication**
With a mPCIe slot (4G LTE, extra Wifi and bluetooth connectivity)
- **Lower installation costs**
no need for an external media player fitting into the wall anymore

Work with the
most developed
OS on the planet.

* The Android robot is reproduced or modified from work created and shared by Google and used according to terms described in the Creative Commons 3.0 Attribution License.

** Separate APK Installation, Google Play store unavailable.



Take control of your business.

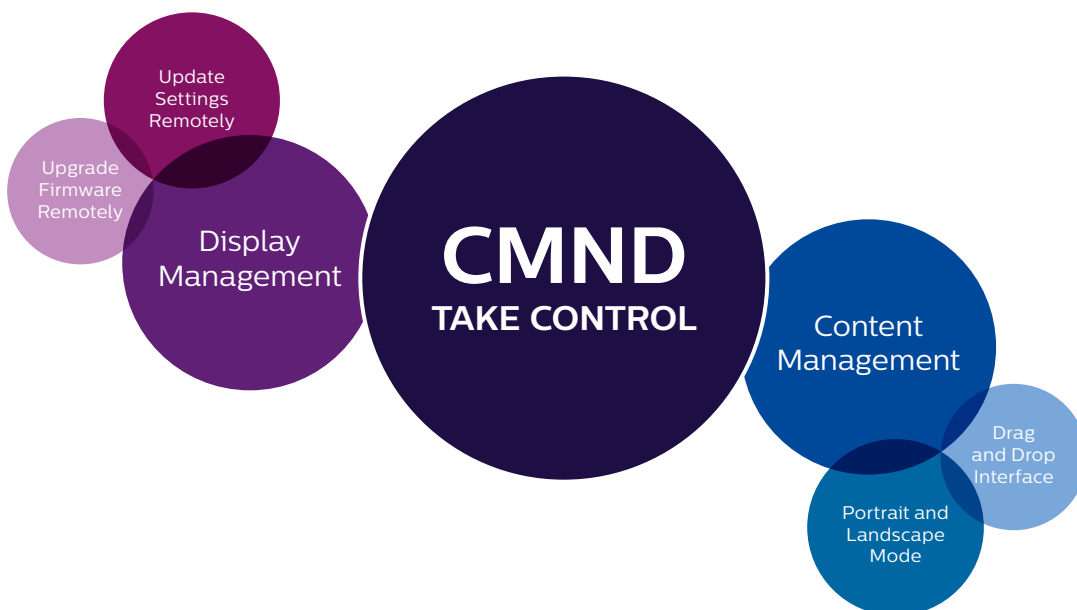
A robust display management platform, CMND puts the power in your hands. From one display to a thousand, manage them all from a central location.

Display Management

Gone are the days of configuring the display settings one by one. Instead, update and control your environment of displays, all at once. Plus, you've got the ability to update software remotely, ensuring that your business keeps running no matter what.

Content Management

Content is king, and you've got total control over how your content is displayed. There are drag and drop widgets, video and image playback, and a scheduling feature to daypart content. With full HD resolution and the ability to show content in both portrait and landscape mode, your message is sure to shine.



* Some features are not supported on all devices.



CMND
TAKE CONTROL

CMND

Update
Settings
Remotely

Upgrade
Firmware
Remotely

Display
Management

Content
Management

Drag
and Drop
Interface

Portrait and
Landscape
Mode



Immerse your viewer with the eye catching Ambilight

Deliver startlingly clear images in a more eco friendly way with the Q-line displays.



SmartCollection



* ambilight optional on 43", 48" and 55" models.



D-line

SmartCollection

Powered by **Android**

Wi-Fi



Conduct your business

Engage your audience with the smarter, faster, more intuitive D-Line display. With automatic screenshots, a mPCIe slot (4G LTE, extra Wifi and bluetooth connectivity), and an extremely fast SOC, engage your audience with the D-Line.





E-Line

Maximize the impact of your message

Connect with your audience 24/7 with this smarter, energy efficient display.



- 55"
- 49"
- 47"
- 42"

SmartCollection



* SmartInsert not available on 42".



V-Line

SmartCollection



SmartInsert *



Make your message shine with a High Brightness display

Enjoy all the benefits of state-of-the-art connectivity and a brighter, more vivid display.

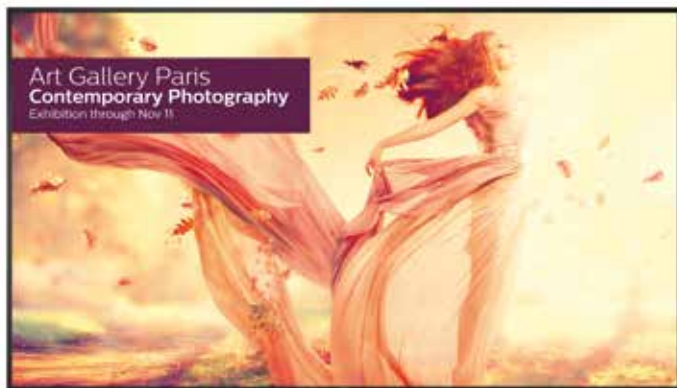
DEPARTURES				
TIME	DESTINATION	FLIGHT	GATE	STATUS
10:15	PISA	WQ236	A4	BOARDING
10:20	DUBLIN	VHBAG	A18	BOARDING
10:30	MALAGA	VHTFU	B12	BOARDING
10:35	BARCELONA	WM635	A78	BOARDING
10:35	BERLIN	R2492	D12	BOARDING
10:35	MOSCOW	31589	A5	DELAYED
10:40	NEW YORK	WM635	F45	BOARDING
10:40	PARIS	XV179	F63	BOARDING
10:45	ORLANDO	VHTLB	AB	CANCELLED
10:45	BOSTON	WJ474	B78	BOARDING
10:50	BUDAPEST	WB491	B70	BOARDING
10:50	LAS VEGAS	WM633	A95	GO TO GATE
11:00	BRUSSELS	XV493	BV	GATE OPEN
11:00	MARSEILLE	A7381	C13	GO TO GATE
11:00	AMSTERDAM	VMANA	D35	GO TO GATE
11:00	REYKJAVIK	WM603	A7	GO TO GATE
11:00	PORTO	RH117	A38	DELAYED
11:05	ROME	JAT118	A42	GO TO GATE
11:05	CAYO COCO	VHAET	A6	GATE OPEN
11:10	TRIPOLI	VNCJH	E12	GO TO GATE



* SmartInsert not available on 42".

** BDL4780VH model.

U-Line



Ultimate large screen experience in Ultra HD

Experience your Signage Solutions like never before thanks to the ultra HD displays with four times the resolution of full HD and QuadViewer.

SmartCollection

4K ULTRAHD

QuadViewer

CMND
TAKE CONTROL

SmartInsert

OPSInsert

CHDBT

FailOver

SmartPower





X-Line

SmartCollection



UltraNarrow
Bezel



Advanced
Colour**Calibration**



CMND
TAKE CONTROL



FailOver

SmartInsert



OPSInsert



CHDBT



SmartPower

Create new stopping power
with Ultra Narrow Bezel displays

Impress your audience with the most impactful video
wall. Featuring an ultra narrow bezel and stunning
picture quality.



55"

49"

47"

T-Line



- 84"
- 75"
- 65"
- 55"
- 43"
- 42" *

** 42" (56ET model)

Discover a new level of interaction with true Multi-Touch displays

Get closer to your audience than ever before.
Fast, precise and extremely durable.

SmartCollection



4K ULTRAHD*

Powered by **Android****



SmartInsert



* 84" and 75" only
** 43" and 55"





Studio

Better Product
Better Features



USBCloning



WelcomePage



USB



PrisonMode

HotelMode



22HFL2819P available with
translucent backcover

Delight your guests with
pure taste

Show your guests how much you care with this
affordable Hospitality TV.



49"

43"

32"

24"



EasySuite

Wow your guests with a smarter Hospitality TV

Send the right message to your guests with Full HD resolution and branded, interactive hotel pages.



40"

32"

24"



24" and 32" available as a HealthCare TV.

Better Product
Better Features





MediaSuite

Better Product
Better Features

Powered by **Android**



 **SmartInfo**

 **SmartInstall**

 **MyChoice**

 **Serial Xpress Protocol**

 **IPTVChannels**

 **AppControl**

Wi-Fi Miracast™

Game changing experience,
powered by Android

Give your guests the viewing experience they
deserve.



55"

49"

43"

40"

32"



Also available as a HealthCare TV.



Signature

Chasing Innovation: Powered by Android and Ambilight

Amaze your guests with a smarter, sexier, faster Hospitality TV.

Better Product
Better Features

4K ULTRAHD

Powered by **Android**



AmbiLux *

CMND
TAKE CONTROL

SmartInfo

SmartInstall

MyChoice

Serial Xpress Protocol

IPTVChannel

AppControl

Wi-Fi Miracast™



65"

55"

49"



Ambilux Projection

Experience light and motion like never before

Philips AmbiLux intensifies every aspect of watching TV. Whenever anything moves on screen, it's seamlessly projected onto the wall behind creating a halo of vibrant light and action around your TV. This extends the action in a breath-taking way resulting in a beautifully detailed, wall-to-wall experience.



Engineering precision

What brings it all to life are nine tiny pico-projectors positioned with extreme precision. Thanks to complex overlap software, they create a seamless and altogether unique visual spectacle. This precise technology balances superior vibrancy, colour and contrast to create an immersive experience that's way beyond the ordinary.



AmbiLux

Heartline



32"

24"

Incredible functionality
for your patients



Class II double isolation

Fireproof



Healthcare Remote included.

Incredible Functionality for your patients

With this dedicated Healthcare TV, use the latest remote technology for effortless installation and control.





Bedside TV

Incredible functionality
for your patients



A unique bedside TV with incredible
functionality for your patients

Designed to complement healthcare environments, this
unique Healthcare TV, with it's external power supply,
is the perfect solution to install near the patient's bed.



19"



Our professional display line up

➤ Signage Solutions



Q-Line

Immerse your viewer with the eye catching Ambilight

- Ambilight changes the way you look at Signage forever
- Save and play content with internal memory
- Show clinical images consistently with D-image
- SmartBrowser to stream content



D-Line

Conduct your business and engage your audience

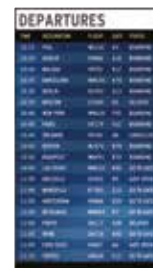
- Develop and play your own Android apps, directly from the display
- Enhanced connectivity with an mPCIe slot (featuring 4G LTE, extra Wifi and bluetooth connectivity)
- CMND for total control over the display
- Automatic Screenshots for proof of play



E-Line

Maximize the impact of your message

- Designed for 24/7 Operation in both Portrait and Landscape
- OPS Insert to create an all-in-one digital signage solution
- Keep your content up and running with Failover
- SmartPower for energy saving



V-Line

Make your message shine with a high brightness display

- Designed for 24/7 Operation in both Portrait and Landscape
- High Brightness for clearer images
- OPS insert to create an all-in-one digital signage solution
- Keep your content up and running with Failover
- SmartPower for energy saving

➤ Hospitality Solutions



Studio

Delight your guests with pure taste

- Low power consumption
- USB cloning of all settings for quick installation
- USB for media playback
- Greet your guests with a customizable welcome page



EasySuite

Wow your guests with a smarter Hospitality TV

- Serial Xpress Protocol for interactive systems
- Additional headphone connection for personal listening
- SmartInfo for branded, interactive hotel info pages
- SmartInstall for easy remote installation



MediaSuite

Give your guests the viewing experience they deserve; powered by android

- Android: A faster, richer, more enjoyable TV experience
- Wifi and bluetooth for wireless control
- Advanced apps with many dedicated services for hospitality
- Integrated IPTV system

> Signage Solutions



U-Line

Ultimate large screen experience in Ultra HD

- 4K Ultra HD
- QuadViewer to show content from 4 separate inputs all on one screen
- Keep your content up and running with Failover
- OPS insert to create an all-in-one digital signage solution



X-Line

Create new stopping power with Ultra Narrow Bezel displays

- Immersive visual experience with Ultra Narrow Bezel
- Advanced Colour Calibration kit to ensure perfect and uniform colors
- High Brightness for clearer images
- OPS insert to create an all-in-one digital signage solution
- Advanced Tiling Feature



T-Line

Discover a new level of interaction with true Multi-Touch displays

- True Multi-Touch with multiple simultaneous touch points
- USB Plug-and-Play with HID compliance
- Picture-in-picture for advanced remote presentation
- Anti glare and reduced optimal parallax

> Hospitality Solutions



Signature

Amaze your guests with a smarter, sexier, faster Hospitality TV

- Android: A faster, richer, more enjoyable TV experience
- Ambilight: An eye catching guest experience
- Serial Xpress Protocol for interactive systems
- Integrated IPTV system

> Healthcare Solutions



Heartline

Incredible Functionality for your patients

- Easy access to exclusive content via Mychoice
- Medical grade materials for a safe environment
- Wipe-clean Healthcare Multi-remote



Bedside TV

A unique bedside TV with incredible functionality for your patients

- Galvanic Isolation: Advanced shock proof protection
- Medical grade materials for a safe environment
- Anti-Microbial to assure the well-being of you and your patients
- Available in a package with medical grade bedside arms

