

PHILIPS


Entertainment lighting

New Products 2018

Lighting to
inspire

innovation ✨ you





Pleasuredome - The Musical
Auckland, New Zealand

Lighting designer: David Eversfield

Photography: Aaron Lam

At Philips Entertainment Lighting we are committed to delivering quality and innovation. We design every product to meet your professional needs, and ultimately contribute to unforgettable experiences. We aspire to enable the people who facilitate these experiences; the lighting designers who use our products to inspire and innovate, and the dealers who share them.

The innovations and products contained within this brochure range from individual luminaires and effects to full complementary families, whether you use them individually or in combination there is a solution for even the most discerning practitioner, from illuminating a concert arena, a theater stage, a film and TV studio or an exhibition space, we have a solution to help you realize your creative vision.

We are passionate about creativity and the application of light in all its forms, this brochure highlights the huge strides we have taken in harmonizing our business and its focus to lead the entertainment lighting industry in quality and innovation.

We have the privilege to represent historic, innovative brands within our industry; two of which are the founding fathers of much of the industry we enjoy today. So, we are very excited to see the addition of several new products to the portfolio, not least the continued expansion of our Vari-Lite portfolio, which has been completely overhauled over the past 18 months with an amazing array of fixtures, this reflects the passion and commitment we at Philips Entertainment Lighting feel and showcases our continued investment in R&D and innovation to ensure we are at the heart of creating great experiences.

Introducing the



What you'll find



Product downloads

Find all available resources for products new and old in our download center – filter by brand, product or asset type.



Tech Center

Access specialist technical support materials for Philips Vari-Lite and Strand Lighting. Especially for trained technicians with more detailed resources. Access granted post training.

Entertainment HUB resource center

The Entertainment HUB is your go-to resource for Entertainment Lighting expertise. Here, you'll find training and technical information about your Philips Vari-Lite, Strand Lighting, Selecon and Showline products.

The latest product news, downloads, software updates and releases – the HUB has it all. Sign up to the HUB for extensive access to training, additional learning resources and specialist technical support. If you'd prefer not to sign up, public access is limited to product downloads and our basic training.



Basic training

Explore our library of product training videos to learn the basics about our fixtures.



Learning Management System (LMS)

Features more in-depth training resources, online modules and the option to sign up to our range of specialist group training sessions in Dallas and interactive webinars.

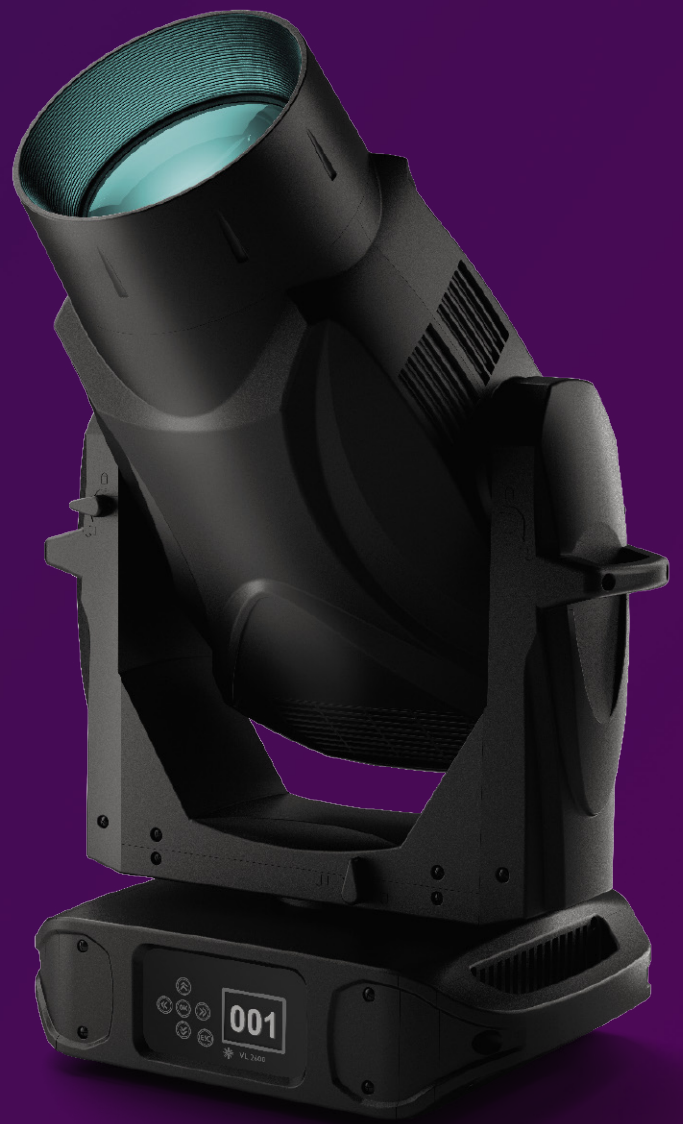
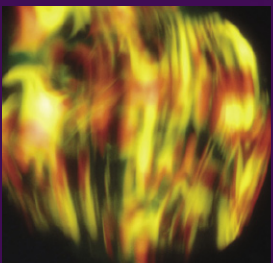
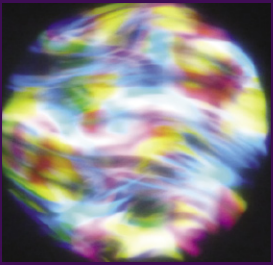


News

Keep up-to-date with the latest product releases, highlights and anything else newsworthy in the world of Entertainment Lighting.

Take a look at entertainmenthub.philips.com

The VL2500 just got a hundred times better – **introducing the VL2600 Series**



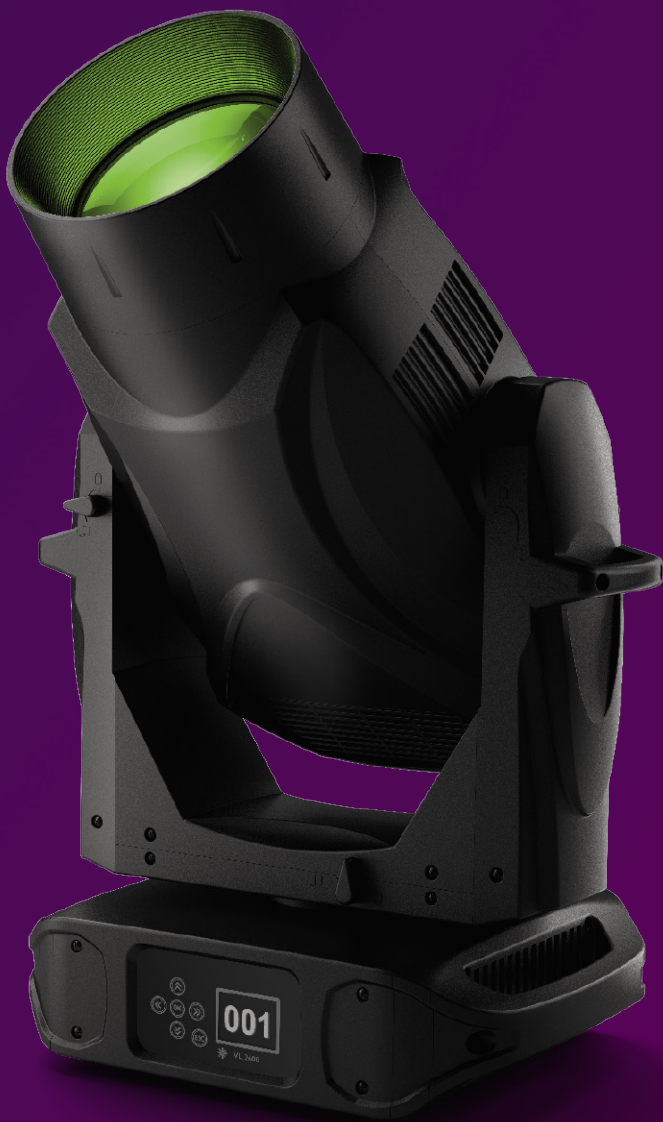
Profile

The VL2000 Series has always been regarded as the industry benchmark when it comes to moving lights. The new VL2600 Spot, Profile and Wash LED fixtures will reset that benchmark!

We believe the VL2600 is a hundred times better than its predecessor. Here are just some of the things that make this new generation superior:

- LED light source
- Higher output
- Higher CRI
- Wide zoom range
- Larger front lens aperture
- Ethernet data input
- RDM
- Side yoke handles
- Fan speed control channel
- Enhanced VL color palette

See them in action and tell us what you think makes them great.





Spot




Wash

Spots

Wash

	VL2600 Spot	VL2600 Profile
	 NEW!	 NEW!
Source	LED	LED
Lamp cap	N/A	N/A
Wattage	550W	550W
Lumen output (max.)	19,000	19,000
Source color temperature	8000K	8000K
Output color temperature	7200K	7200K
CRI / Ra	82	82
TM30	Rf/80 Rg/94	Rf/80 Rg/95
Beam angle	7-48°	7-48°
Pan / tilt	540° / 270°	540° / 270°
Controls	DMX512-A / RDM, Art-Net™	DMX512-A / RDM, Art-Net™
DMX channels	41 / 36	46 / 41
Color system	CMY, Variable CTO 1 x fixed color wheels 7 + open	CMY, Variable CTO 1 x fixed color wheels 7 + open
Gobo / effects	2 x rotating / indexing 7 + open 1 x fixed 7 + open All glass interchangeable	1 x rotating / indexing 7 + open 1 x fixed 7+ open All glass interchangeable
Independent rotating prism	3 facet round	4 facet round
Independent frost	Medium frost	Medium frost
Dimmer / strobe	Electronic 16-bit	Electronic 16-bit
Framing shutters / beam shaping	No	Yes
Iris	Yes	Yes
Color calibration	N/A	N/A
Accessories	N/A	N/A
Operating voltage	100-240VAC 50/60Hz	100-240VAC 50/60Hz
IP rating	IP20	IP20
Operating temperature	-10-45°C	-10-45°C
Construction	Metal frame, engineering plastic covers	Metal frame, engineering plastic covers
Finish	Black	Black
Dimensions H x W x L	464 x 300 x 715mm	464 x 300 x 715mm
Hanging centers	500mm	500mm
Weight	32.0kg	32.0kg
Warranty	2 years	2 years

	VL2600 Wash
	 NEW!
Source	LED
Lamp cap	N/A
Wattage	550W
Lumen output (max.)	22,000
Source color temperature	8000K
Output color temperature	7200K
CRI / Ra	82
TM30	Rf/80 Rg/94
Color mixing	CMY, Variable CTO 1 x fixed color wheels 7 + open
Beam angle	12-63°
Pan / tilt	540° / 270°
Controls	DMX512-A / RDM, Art-Net™
Pixel / zone control	N/A
DMX channels	32/ 29
Dimming	Electronic 16-bit
Macro effects	N/A
Accessories	N/A
Operating voltage	100-240VAC 50/60Hz
IP rating	IP20
Operating temperature	-10-50°C
Construction	Metal frame, engineering plastic covers
Finish	Black
Dimensions L x H x W	465 x 300 x 705mm
Hanging centers	500mm
Weight	30.2kg
Warranty	2 years

Spots: VL2600 Spot

Designed with top-class performance and cost-effective ownership in mind. It produces 19,000 lumens of high color temperature, high contrast light output from its state-of-the-art 550W light engine, with a class-leading zoom range of 7-48°.

Expanding on the color range of the VL2500, it offers a broader choice of saturated colors whilst maintaining the familiar Vari-Lite color palette from the CMY color system with variable CTO adjustment. Effects features include Iris, two rotating gobo wheels and one fixed, plus additional color wheel, prism and variable frost. Compact, lightweight, fast and accurate, the VL2600 Spot is engineered to be easy to use, prep and maintain.

The VL2600 Spot is one of three luminaires designed as the LED generation update for the popular VL2500 Series. A full system lighting solution with dedicated Spot, Wash and Profile fixtures, the VL2600 range combines Vari-Lite quality and performance with the latest LED technology, all engineered to deliver the best possible package to the mid-sized show lighting segment.



Product specification

Light source	CRI	Color temp	Wattage	Beam	Dimming	Housing	IP rating	Overall dimensions H x W x L	Weight	Order Code
LED	82	7200K source Variable CTO	550W	7-48°	DMX512-A / RDM	Black	IP20	464 x 300 x 715mm	32.0kg	88-105-6950-00

Accessories

	Order Code
Luminaire programing kit	PEGASUS

Features

- Lower power consumption – approx. 820W (550W LED engine).
- High output – 19,000 lumens.
- High color temperature – 7200 CCT.
- Good color rendering: CRI 81 | TM30 Rf/80 Rg/94.
- Flat, even beam.
- High contrast ratio.
- Wide zoom range – 7° to <48°.
- Color mixing – CMY + variable CTO.
- Fixed color wheel (7+ open).
- Beam reduction – Iris.
- Variable fan control.
- Compact design – 464 x 300 x 715mm. Weight 32kg.
- Fast and accurate movement (FP=3s, FT=2s).
- Projected Image: 1 Rotating gobo wheel (7+ open, glass gobos) | 1 Fixed gobo wheel (8+ open, glass gobos).
- Spilt-beam effects – 1 x 3-facet prism.
- Beam diffusion – variable frost.
- Two year limited warranty.

Suggested uses:



For more information visit philips.com/vari-lite

Spots: VL2600 Profile

The VL2600 Profile is designed with top-class performance and cost-effective ownership in mind. It produces 19,000 lumens of high color temperature, high contrast light output from its state-of-the-art 550W light engine, with a class-leading zoom range of 7-48°

Expanding on the color range of the VL2500, it offers a broader choice of saturated colors whilst maintaining the familiar Vari-Lite color palette from the CMY color system with variable CTO adjustment. Effects features include Iris, two gobo wheels, one fixed color wheel, prism and variable frost. Compact, lightweight, fast and accurate, the VL2600 Profile is engineered to be easy to use, prep and maintain.

The VL2600 Profile is one of three luminaires designed as the LED generation update for the popular VL2500 Series. A full system lighting solution with dedicated Spot, Wash and Profile fixtures, the VL2600 range combines Vari-Lite quality and performance with the latest LED technology, all engineered to deliver the best possible package to the mid-sized show lighting segment.



Product specification

Light source	CRI	Color temp	Wattage	Beam	Dimming	Housing	IP rating	Overall dimensions H x W x L	Weight	Order Code
LED	82	7200K source Variable CTO	550W	7-48°	DMX512-A / RDM	Black	IP20	464 x 300 x 715mm	32.0kg	88-105-7270-00

Accessories

	Order Code
Luminaire programming kit	PEGASUS

Features

- Lower power consumption – approx. 820W (550W LED engine).
- High output – 19,000 lumens.
- High color temperature – 7200 CCT.
- Good color rendering – CRI 81 | TM30 Rf/80 Rg/94.
- Flat, even beam.
- High contrast ratio.
- Full wipe framing shutter.
- Wide zoom range – 7° to <48°.
- Color mixing – CMY + variable CTO.
- Fixed color wheel (7+ open).
- Beam reduction – Iris.
- Variable fan control.
- Compact design – 464 x 300 x 715mm. Weight 32kg.
- Fast and accurate movement (FP=3s, FT=2s).
- Projected Image – 2 rotating gobo wheels (7+ open glass gobos) | 1 fixed gobo wheel (8+ open glass gobos).
- Spilt-beam effects – 1 x 3-facet prism.
- Beam diffusion – variable frost.
- Two year limited warranty.

Suggested uses:



For more information visit philips.com/vari-lite

Spots: VL2600 Wash

Designed with top-class performance and cost-effective ownership in mind. It produces 22,000 lumens of high color temperature, high contrast light output from its state-of-the-art 550W light engine, with a class-leading zoom range of 12-63°.

The VL2600 Wash includes an internal, beam-shaping framing system and has an adjustable beam edge feature (PC or Fresnel). It also expands on the color range of the VL2500, offering a broader choice of saturated colors whilst maintaining the familiar Vari-Lite color pallet from a CMY color system with variable CTO adjustment, plus a 7-color fixed wheel. Compact, lightweight, fast and accurate, the VL2600 Wash is engineered to be easy to use, prep and maintain.

The VL2600 Wash is one of three luminaires designed as the LED generation update for the popular VL2500 Series. A full system lighting solution with dedicated Spot, Wash and Profile fixtures, the VL2600 range combines Vari-Lite quality and performance with the latest LED technology, all engineered to deliver the best possible package to the mid-sized show lighting segment.



Product specification

Light source	CRI	Color temp	Wattage	Beam	Dimming	Housing	IP rating	Overall dimensions H x W x L	Weight	Order Code
LED	82	7200K source Variable CTO	550W	12-63°	DMX512-A / RDM	Black	IP20	465 x 300 x 705mm	30.2kg	88-105-7340-00

Accessories

	Order Code
Luminaire programming kit	PEGASUS

Features

- Lower power consumption – approx. 820W (550W LED engine).
- High output – 22,000 lumens.
- High color temperature – 7200 CCT.
- Good color rendering – CRI 81 | TM30 Rf/80 Rg/94.
- Wide zoom range – 12° to 63°.
- Color mixing – CMY + variable CTO.
- Fixed color wheel (7 + open).
- Adjustable beam edge – PC to Fresnel.
- Beam-shaping framing system.
- Variable fan control.
- Compact design – 465 x 300 x 705mm. Weight 30.2kg.
- Fast and accurate movement (FP=3s, FT=2s).
- Two year limited warranty.

Suggested uses:



For more information visit philips.com/vari-lite

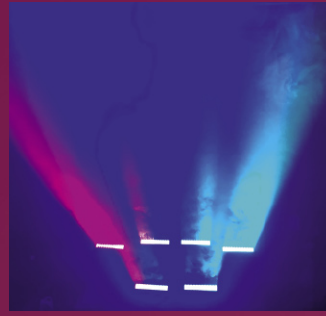
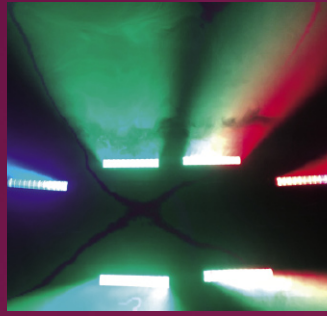
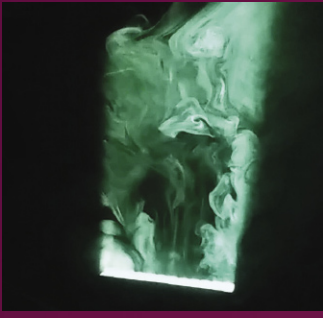
The VL800 BeamLine – **a beam like no other**

The VL800 BeamLine offers unique effects with a multiplicity of animation options. Its distinctive, collimated, flat sheet-like beam can spin and tumble continuously, with advanced color control and pixel-mapping capabilities adding layer upon layer of design possibility.

Its bright, elongated beam of light delivers depth and dimension with fast, non-stop pan and tilt and Vari-Lite's exclusive Mega-step and Twist effects, while pixel-mapping across 12 zones allows the extra dimension of video integration.

Compact, lightweight and designed to maximize performance, reliability and ease of maintenance, the VL800 BeamLine is priced to offer a range of effects – and a return on investment – that will take your breath away.

- Linear strip moving light
- 3.5° beam
- RGBW color mixing
- >3000 lumen output
- 3-zone or 12-zone pixel-mapping
- Continuous pan and tilt
- Mega-step and twist effects
- Fast, repeatable movement



Beam

VL800 BeamLine



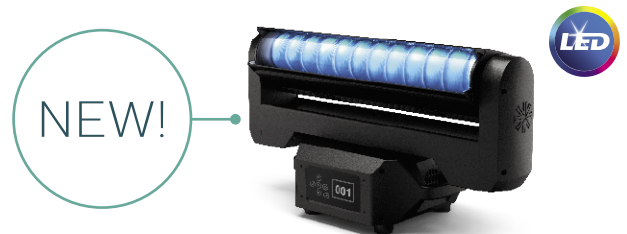
NEW!

Source	LED
Lamp cap	N/A
Wattage	12 x 40W
Lumen output (max.)	3,020
Color temperature	Variable
CRI / Ra	>90
Beam angle	3.5°
Pan / tilt	540° / 240° Continuous P/T
Controls	DMX512-A / RDM, Art-Net™
DMX channels	16-bit - 1/39/111 8-bit - 18/26/62
Color system	RGBW
Gobo / effects	N/A
Independent rotating prism	N/A
Independent frost	N/A
Dimmer / strobe	Electronic 16-bit
Framing shutters / beam shaping	N/A
Color calibration	Yes
Accessories	N/A
Operating voltage	100-240VAC 50/60Hz
IP rating	IP20
Operating temperature	-20-50°C
Construction	Metal frame, engineering plastic covers
Finish	Black
Dimensions L x H x W	240 x 600 x 336mm
Hanging centers	625mm
Weight	14.5kg
Warranty	2 years

Beam: VL800 BeamLine

The VL800 BeamLine is a linear moving head unit offering a wide variety of unique effects and animation options. Its 12 RGBW LED emitters produce a bright (>3000 lumen) and distinctive, flat sheet of light with a collimated 3.5° beam angle. The unit offers advanced dynamic capabilities with fast, continuous pan and tilt, plus Vari-Lite's exclusive Mega-step and Twist functions on both pan and tilt channels.

The VL800 BeamLine's unique looking optical system and comprehensive RGBW color mixing capabilities are complemented by the possibility for pixel-mapping in 12-zone mode, allowing for the extra dimension of video integration. The VL800 BeamLine is compact and lightweight, designed to maximize performance, reliability and ease of maintenance, and priced to offer customers a fast and high return on investment.



Product specification

Light source	CRI	Color temp	Wattage	Beam	Dimming	Housing	IP rating	Overall dimensions H x W x L	Weight	Order Code
LED	>90	Variable CTO	12 x 40W	3.5°	DMX512-A / RDM	Black	IP20	240 x 600 x 336mm	14.5kg	88-105-7290-00

Accessories

	Order Code
Luminaire programing kit	PEGASUS

Features

- Linear strip moving light.
- Compact and lightweight.
- 12 x RGBW LED emitters.
- >3000 lumen output.
- 3.5° beam angle.
- Pixel-mapping.
- Continuous pan and tilt.
- Mega-step and twist effects.
- Fast, repeatable synchronized movement.
- Two year limited warranty.

Suggested uses:



For more information visit philips.com/vari-lite

Spots

	VL1100 LED	VL1100 LEDHP
--	------------	--------------



Source	LED	LED
Lamp cap	N/A	N/A
Wattage	445W	445W
Lumen output (max.)	11,300	11,300
Source color temperature	3200K	3200K
Output color temperature	3200K	3200K
CRI / Ra	96	>69
TM30	–	–
Beam angle	19–36° 36–71° (superzoom)	19–36° 36–71° (superzoom)
Pan / tilt	540°/240°	540°/240°
Controls	DMX512-A / RDM	DMX512-A / RDM
DMX channels	19/21/27/29	19/21/27/29
Color system	CMY	CMY
Gobo / effects	1 x rotating indexing 5 + open Gobo not supplied	1 x rotating indexing 5 + open Gobo not supplied
Independent rotating prism	N/A	N/A
Independent frost	Variable	Variable
Dimmer / strobe	Electronic 16-bit / 8-bit	Electronic 16-bit / 8-bit
Framing shutters / beam shaping	S Version	S Version
Iris	I Version	I Version
Color calibration	N/A	N/A
Accessories	N/A	N/A
Operating voltage	100–240VAC 50/60Hz	100–240VAC 50/60Hz
IP rating	IP20	IP20
Operating temperature	0–50°C	0–50°C
Construction	Metal frame, engineering plastic covers	Metal frame, engineering plastic covers
Finish	Black	Black
Dimensions H x W x L	445 x 876 x 660mm	445 x 876 x 660mm
Hanging centers	635mm	635mm
Weight	34.5kg	34.5kg
Warranty	2 years	2 years

Spots: VL1100 LED / VL1100 LEDHP

The future is here. The new VL1100 LED delivers high quality light and consistent color reproduction, making it the discerning lighting designer's first true alternative to the traditional tungsten source in a moving head fixture.

With its unique LED engine delivering high-CRI output and dimming with a perfect 'tungsten' color shift, and an innovative hybrid cooling system smoothly optimizing the balance between light output and noise, the VL1100 LED brings seamless new possibilities to a designer's favorite.



VL1100 LED

Product specification

Light source	Type	CRI	Color temp	Wattage	Beam	Dimming	Housing	IP rating	Overall dimensions H x W x L	Weight	Order Code
LED	S version	96	3200K	650W	19-36° 36-71°	DMX512-A / RDM	Black	IP20	445 x 876 x 660mm	34.5kg	20.1602.0001.01
LED	I version	96	3200K	650W	19-36° 36-71°	DMX512-A / RDM	Black	IP20	445 x 876 x 660mm	34.5kg	20.1602.0001.11



VL1100 LEDHP

Product specification

Light source	Type	CRI	Color temp	Wattage	Beam	Dimming	Housing	IP rating	Overall dimensions H x W x L	Weight	Order Code
LED	S version	>69	3200K	650W	19-36° 36-71°	DMX512-A / RDM	Black	IP20	445 x 876 x 660mm	34.5kg	20.1602.001.02
LED	I version	>69	3200K	650W	19-36° 36-71°	DMX512-A / RDM	Black	IP20	445 x 876 x 660mm	34.5kg	20.1602.0001.12

Accessories

	Order Code
Luminaire programming kit	PEGASUS

Features



- Exclusive low-energy Philips LED engine.
- High CRI light output.
- Color reproduction consistent with existing VL1100.
- Tungsten red shift emulation during dimming.
- Hybrid liquid/forced air cooling system.
- User definable control of output/noise ratio.
- 4-blade framing system ('S' version).
- 16-leaf Iris ('I' version).
- CMY color mixing system.
- Color Enhancement channel.
- Continuously variable zoom range 19°-36°: super zoom angles to 70°.
- Variable fan control channel.
- Two year limited warranty.

Suggested uses:




For more information visit philips.com/vari-lite

Spots

	VLZ Spot	VLZ Profile
		
Source	LED	LED
Lamp cap	N/A	N/A
Wattage	620W	620W
Lumen output (max.)	25,000	24,000
Source color temperature	8000K	8000K
Output color temperature	7200K	7200K
CRI / Ra	76	76
TM30	–	–
Beam angle	7–50°	8–50°
Pan / tilt	540° / 270°	540° / 270°
Controls	DMX512-A / RDM, Art-Net™	DMX512-A / RDM, Art-Net™
DMX channels	42	61
Color system	CMY, Variable CTO 2 x fixed color wheels 6 + open	CMY, Variable CTO 1 x fixed color wheels 6 + open
Gobo / effects	2 x rotating / indexing wheel 7+ open	1 x rotating / indexing wheel 7+ open, 1 x fixed gobo wheel 7 + open
Independent rotating prism	3 facet round	3 facet round
Independent frost	3 way frost system	3 way frost system
Dimmer / strobe	Electronic 16-bit	Electronic 16-bit
Framing shutters / beam shaping	No	No
Iris	Yes	Yes
Color calibration	N/A	N/A
Accessories	–	–
Operating voltage	100–240VAC 50/60Hz	100–240VAC 50/60Hz
IP rating	IP20	IP20
Operating temperature	–10–45°C	–10–45°C
Construction	Metal frame, engineering plastic covers	Metal frame, engineering plastic covers
Finish	Black	Black
Dimensions H x W x L	458 x 316 x 809mm	458 x 316 x 796mm
Hanging centers	600mm	600mm
Weight	44.0kg	42.4kg
Warranty	2 years	2 years

Wash

	VLZ Wash
	
Source	LED
Lamp cap	N/A
Wattage	620W
Lumen output (max.)	25,000
Source color temperature	8000K
Output color temperature	7200K
CRI / Ra	76
TM30	–
Color mixing	CMY, variable CTO 2 x fixed color wheels
Beam angle	8–50°
Pan / tilt	540° / 270°
Controls	DMX512-A / RDM, Art-Net™
Pixel / zone control	N/A
DMX channels	1
Dimming	Electronic 16-bit
Macro effects	N/A
Accessories	N/A
Operating voltage	100–240VAC 50/60Hz
IP rating	IP20
Operating temperature	–10–45°C
Construction	Metal frame, engineering plastic covers
Finish	Black
Dimensions L x H x W	458 x 316 x 796mm
Hanging centers	600mm
Weight	39.0kg
Warranty	2 years

VLZ Series: VLZ Spot / VLZ Profile / VLZ Wash

Designed around the latest high-output LED light engine, the VLZ Series offers a complete toolkit for every stage lighting application, from concert touring to opera.

With the CMY-CTO color system and dual fixed color wheel creating all the beautiful, seamless mixed colors and split colors you expect of a Vari-Lite, the VLZ family covers all the bases, delivering stunning power, incredible efficiency and all the features you know and love.

VLZ... LED at heart, familiar to the touch, Philips Vari-Lite to the core.



Product specification

Light source	Type	CRI	Color temp	Wattage	Beam	Dimming	Housing	IP rating	Overall dimensions H x W x L	Weight	Order Code
LED	VLZ Spot	>70	8000K source Variable CTO	620W	7-50°	DMX512-A / RDM	Black	IP20	458 x 316 x 809mm	44.0kg	26-105-0001-00
LED	VLZ Profile	>70	8000K source Variable CTO	620W	8-50°	DMX512-A / RDM	Black	IP20	458 x 316 x 796mm	42.4kg	26-105-0002-00
LED	VLZ Wash	>70	8000K source Variable CTO	620W	78-50°	Electronic 16-bit	Black	IP20	458 x 316 x 796mm	39.0kg	26-105-0003-00

Features

- 25,000 lumens.
- 7-50° zoom.
- Large visual impact 180mm (7") front lens.
- High output White Light LED light source engine to maintain constant high output light levels.
- Wide zoom range.
- 16-bit dimmer control with 4 selectable curves.
- Color mixing system CMY + CTO color control.
- 12 fixed color - 2 color wheels 6 + open with color shake and wheel spin functions.
- 2 fully rotating and indexing gobo wheel loaded interchangeable mid-effect and breakup gobos.
- 3 frost for beam softening.
- 3 facet prism.
- Iris for beam size reduction.
- Fast, accurate and repeatable movement on all functions.
- Two year limited warranty.

Suggested uses:



For more information visit philips.com/vari-lite





Opera Sanxay's dynamic presentation of the Magic Flute

Working closely with Opera Sanxay to introduce the first-ever moving light rig for the celebrated Soirées Lyrique de Sanxay opera festival. The use of the latest stage lighting and control technology successfully enabled a new level of dynamic design possibilities for this outdoor spectacle.

The carefully chosen lighting rig for this year's production, Mozart's *The Magic Flute*, successfully combined traditional and LED light sources. Moving lights, including Philips VL4000 Spots and VL6000 Beams, plus LED-based VLZ Wash and SL BEAM 300fx luminaires, were used alongside fixed units. Control was provided by the Philips Strand NEO system.

In exploiting the possibilities of this advanced set-up, lighting designer Nevio Cavina enjoyed comprehensive on-site support and programming assistance from Philips Entertainment's Bobby Harrell and Gregg Brooks. "The lighting package allowed a new dynamic in the narrative to be explored," says Cavina. "I was impressed by the richness of the color and effects and the accuracy of the stored positions of the moving lights. The water and fire effects were particularly satisfying. And NEO's multi-user capability meant that looks could be achieved and stored quickly."

Overall, Cavina found much to praise in the performance, versatility and reliability of our fixtures. He says, "Considering the difficulties posed by the weather, I was also pleased to be able to experience the quality of the moving lights. Some of the fixtures we used are not normally used in lyrical production, but at Sanxay our experience with these has been hugely positive."

Mathieu Blugeon, president of the Soirées Lyrique de Sanxay, was thrilled with the result of the partnership. "The feedback from the technical team and audience was extremely positive and enthusiastic. The show took on a new dimension thanks to these incredible lighting fixtures and the NEO control console. This gave a real added value to the festival."

He adds, "I would like to highlight Bobby and Gregg for their skills, kindness and expertise. They were particularly appreciated by our entire team and the festival's leaders. It was so important for us to have the support of such knowledgeable personnel to help with the adoption of new technology in this setting. Now I have just one wish: to keep Philips Lighting as our partner!"

The Projects team

Our dedicated and experienced Projects Team offers project and systems solutions; from initial ideas and concept discussions, through to a complete solution package prepared to go to market.

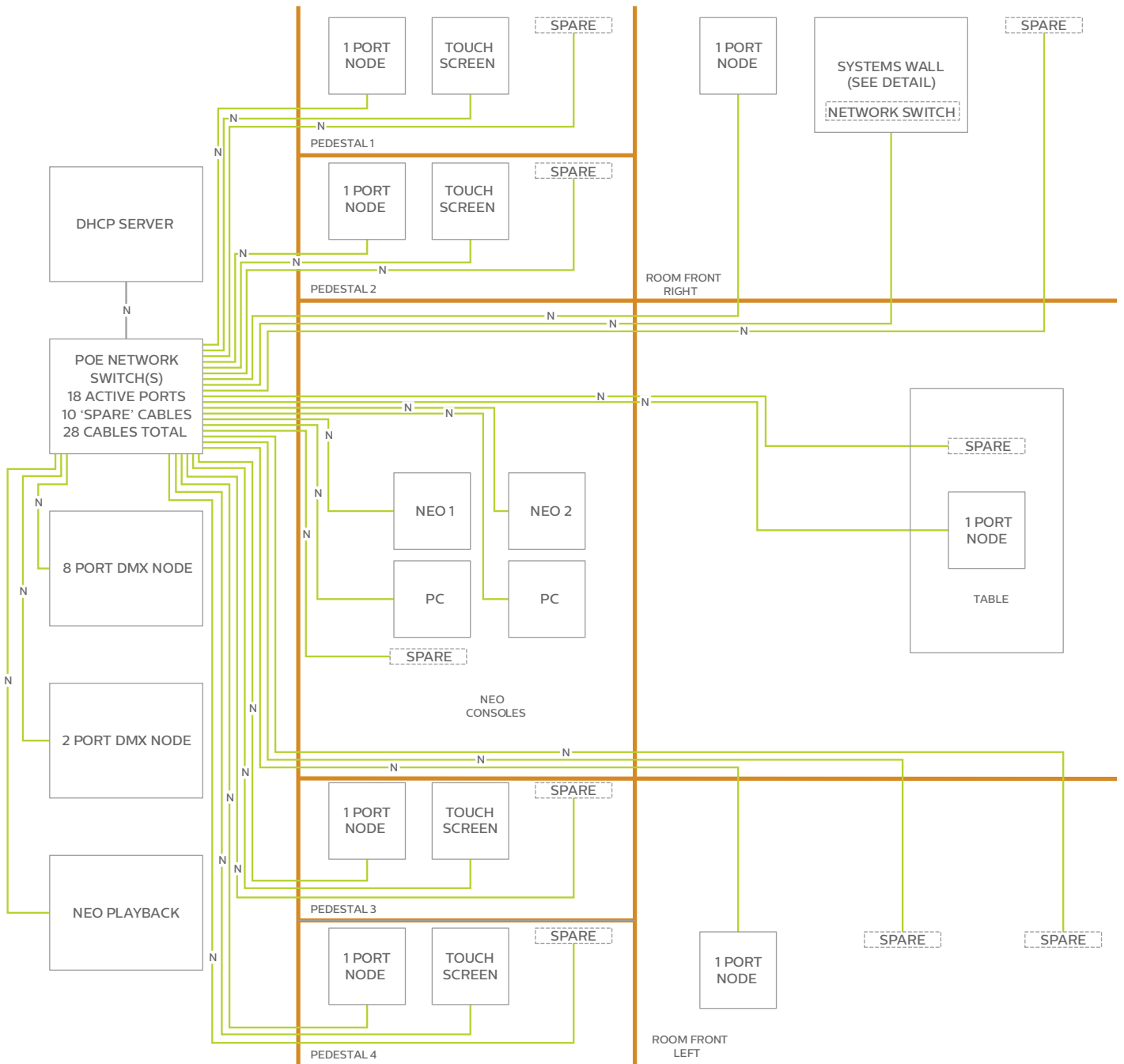
Our team provides support, advice and specifications for complete solutions within specialist entertainment lighting where light fixtures, control systems, power systems and networks, work in harmony to ensure an optimized, efficient and completely integrated solution.

Ensuring the right balance of products and connectivity to achieve the desired effect can often be a bewildering challenge. We offer the necessary specialist guidance and support at all levels of a project to fulfil the brief and optimize a solution.

Developing products to improve system solutions is at the forefront of our innovation strategy. Due for launch shortly will be new and updated products that target a systems approach, to appeal to systems integrators. Using Philips unequalled technological

know-how, our new products will bring Ethernet connectivity to the forefront, setting a new benchmark for connectivity in the entertainment industry.

Software is an integral part of systems solutions. Recently we have issued the 500ML console software update V2 focused on delivering more logical work flow through the introduction/integration of a new cue lists system, new theatre style playback, new effects, copy and move function, enhanced 'move in black' a more efficient touch interface.



KEY: D* DMX cable
P* Power cable
N* CAT6E STP cable
V* Vision.net

- Vision.net station 1 button
- Vision.net station 2 button
- Vision.net station 4 button
- Vision.net station 8 button

- Vision.net Touchscreen
- Vision.net station Plug-in
- DMX station IP=input / OP=output / xX=ports
- Network station xX=ports

AMERICAS

Philips Entertainment U.S.
10911 Petal Street
Dallas, TX 75235
Tel: +1 214647 7880
Fax: +1 214647 8039

ASIA

Philips Entertainment Lighting Asia Limited
Unit C, 14/F, Roxy Industry Centre
No. 41 - 49 Kwai Cheong Road
Kwai Chung, N.T. Hong Kong
Tel: +852 2796 9786
Fax: +852 2798 6546

BEIJING

Room 1201, Free Town D Tower,
58 South 3rd Ring Road East
Chaoyang District
Beijing, China
Tel: +8610-5867 4776
Fax: +8610-5867 4775

MALAYSIA

B-1-27, Dataran Cascades, No. 13A,
Jalan PJU 5/1, Kota Damansara,
47810 Petaling Jaya, Selangor Darul Ehsan, Malaysia
Tel: +603 7611 7302
Fax: +603 7629 4192

AUSTRALIA and NEW ZEALAND

Philips Entertainment New Zealand
Peter McKenzie
Mobile +61 419 133 342
peter.mckenzie@signify.com

EUROPE

Philips Entertainment Group Europe
Rondweg Zuid 85
Winterswijk 7102 JD Netherlands
Tel: +31 (0)543 542 513

