

# PerfectBeam

Endless possibilities to shape light

---



# PerfectBeam

Endless possibilities to shape light

PerfectBeam is a product range with **Superior Light Quality** and **Maximum Beam Flexibility**, allowing **Optimal Art Preservation**.

Main application segment is Museum Lighting. Other application areas include high end (Fashion) Retail Lighting.

PerfectBeam strikes the perfect balance between presenting and preserving art, between constantly changing exhibits, and the need for energy efficiency and low maintenance.

## Superior Light Quality

**Perfect lighting is invisible: It gets out of the way, and makes visible what the artist intended.** Key to showcasing masterpieces is to present with authentic colors, subtly attracting and guiding the viewer's eye. Perfect lighting makes it easy to see, interpret, understand and appreciate, down to the smallest detail, using light to evoke personal emotions and to create an unforgettable museum experience.

### Key Features:

- CRI of 90+
- Patented technology for light uniformity
- No halo or spill light
- Crisp light, single shadow
- High color consistency
- Minimal glare

## Optimal Art Preservation

**Perfect lighting is gentle: It provides good visibility, while adequately protecting precious exhibits.** The often contrary demands for good visibility, conservation and compliance with permissible limits for exhibits are now being met using LED lighting. Containing no harmful UV and IR rays, your sensitive exhibits do not need the use of additional filters and protection. Effective yet gentle, PerfectBeam is meeting the conservation requirements of the most delicate objects.

### Key Features:

- No harming UV/IR radiation to precious exhibits
- Individual dimming and full control of light exposure
- Philips Research has studied the degradation of sensitive painting pigments under illumination with different light sources. They found that PerfectBeam LEDs have the lowest damage potential at a given CCT compared to unfiltered incandescent and halogen sources.

## Maximum Beam Flexibility

**Perfect lighting is versatile: It adapts to constant change in exhibition and lighting needs.** PerfectBeam is creating the perfect light for any exhibit. Its modular design, the variable beam, the beam shaping accessories and onboard dimming ensure maximum flexibility, all from a single spot. Its extreme flexibility makes it easy to adapt to the unique demands of temporary exhibitions and last minute lighting design adjustments.

### Key Features:

- Modular design, easy to adapt
- Variable beam angle (7°-43°)
- Beam shaping accessories (clear, soft, linear, etc)
- Onboard dimming, DALI

## Available Options

**Product:** Variable Spot / Framing Projector

**Finish:** Black / White

**Color Temperature:** 2700K / 3000K / 4000K

**CRI:** 90+, 80+

**Dimming:** Onboard / DALI / ON/OFF

**Accessories:** Clear / Soft / Linear frontal lenses

## Variable Spot (7° - 43°)



## Framing Projector



# PerfectBeam

Design details

Onboard dimming



Fixation for hinge



Ring for lens exchange



Indication on Variable Spot



Framing orientation ring



# PerfectBeam

## Variable Spot

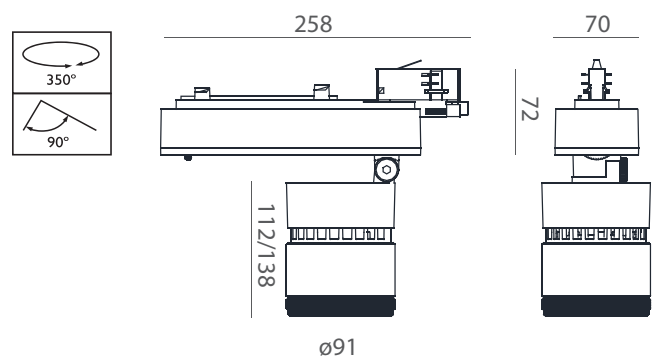
### Specifications

Light source	LED module
Power	21 W
Beam angle	NB (7°) - WB (43°) (with clear frontal lens)
Luminous flux	430 lm (7°) - 684 lm (43°) (3000K)
Correlated Color Temperature	2700K / 3000K / 4000K
Color Rendering Index	<ul style="list-style-type: none"><li>• 2700K, CRI 90+</li><li>• 3000K, CRI 90+</li><li>• 4000K, CRI 80+</li></ul>
Standard deviation color matching	<3 (with a tolerance $\pm 0.005$ on x, y color point measurements)
Median useful life L80B50	50,000 hours
Median useful life L90B50	25,000 hours
Average ambient temperature	+25 °C
Driver failure rate	1% per 5000 hours
Operating temperature range	0 to +35 °C
Driver	Built-in
Mains voltage	220 or 240 V / 50-60 Hz
Dimming	Onboard Dimming (10% to 100%) DALI dimming ON/OFF
Material	Gearbox: plastic Head and heatsink: aluminum Frontal lens: polycarbonate
Color	Black White
Connection	Push-in connector or with pull relief Track connector (3C)
Installation	On 3-circuit track (3C)
Accessories	Clear frontal lens (included) Soft frontal lens [SV-5] (included) Linear frontal lens [L-0140] (not included) <i>Other lenses available on request</i>
Warranty	5 years

### Variable Spot (7° - 43°)



### Technical drawings



# PerfectBeam

Variable Spot

Interchangeable lenses for beam shaping



Small beam

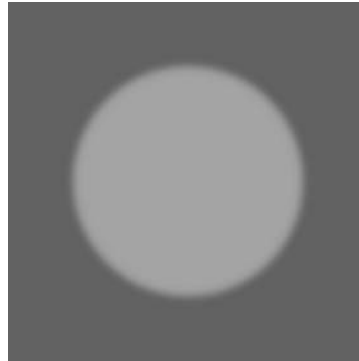


Medium beam

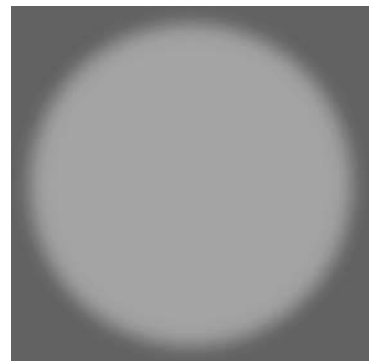
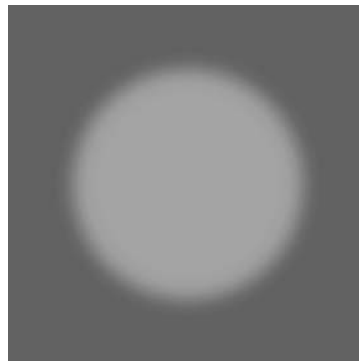
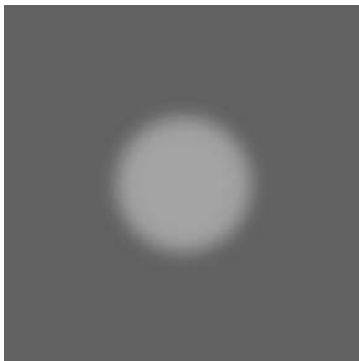


Wide beam

Clear frontal lens



Soft frontal lens



Linear frontal lens



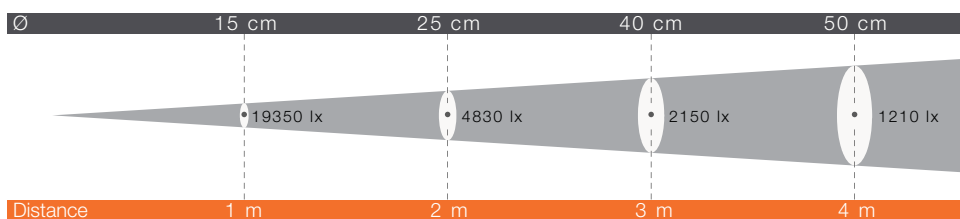
# PerfectBeam

Variable Spot

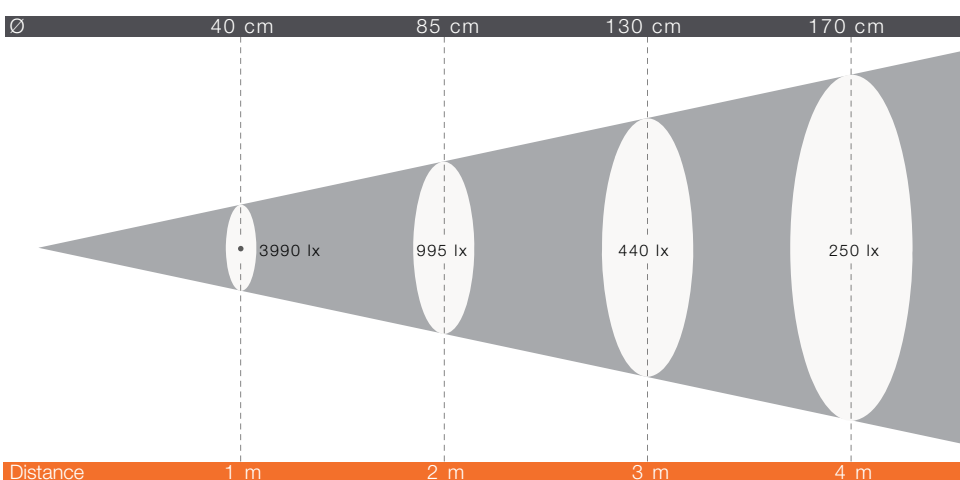
## Output details



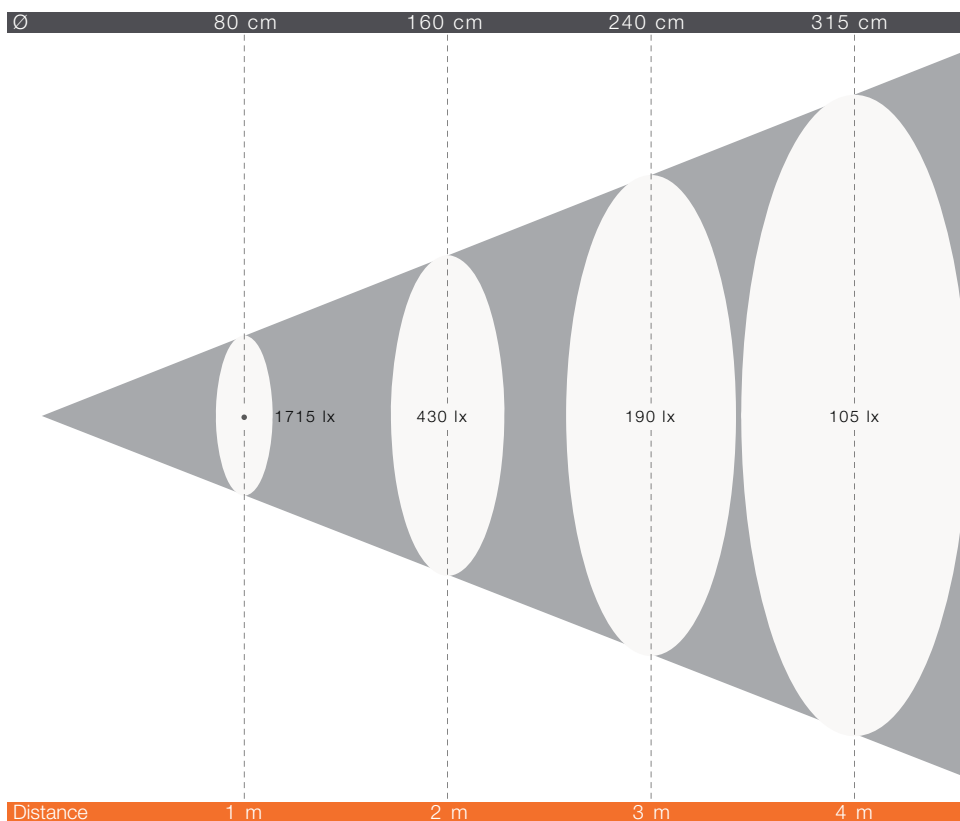
7°  
430 lm



24°  
590 lm



43°  
684 lm



Photometric files available. Please refer to Ilti Luce.

# PerfectBeam

## Framing Projector

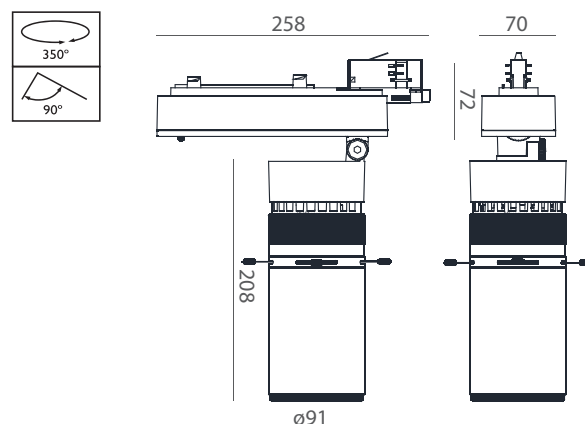
### Specifications

Light source	LED module
Power	21 W
Beam angle	max 30°
Luminous flux	254 lm (3000K)
Correlated Color Temperature	2700K / 3000K / 4000K
Color Rendering Index	<ul style="list-style-type: none"><li>• 2700K, CRI 90+</li><li>• 3000K, CRI 90+</li><li>• 4000K, CRI 80+</li></ul>
Standard deviation color matching	<3 (with a tolerance $\pm 0.005$ on x, y color point measurements)
Median useful life L80B50	50,000 hours
Median useful life L90B50	25,000 hours
Average ambient temperature	+25 °C
Driver failure rate	1% per 5000 hours
Operating temperature range	0 to +35 °C
Driver	Built-in
Mains voltage	220 or 240 V / 50-60 Hz
Dimming	Onboard Dimming (10% to 100%) DALI dimming ON/OFF
Material	Gearbox: plastic Head and heatsink: aluminum Frontal lens: polycarbonate
Color	Black White
Connection	Push-in connector or with pull relief Track connector (3C)
Installation	On 3-circuit track (3C)
Accessories	Clear frontal lens (included) <i>Other soft lenses available on request</i>
Warranty	5 years

### Framing Projector



### Technical drawings



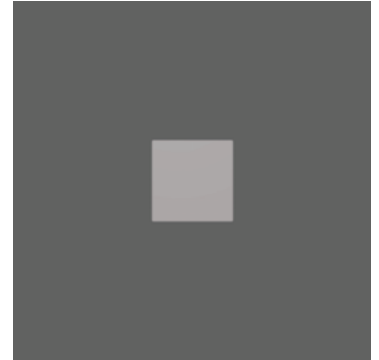
# PerfectBeam

Framing Projector

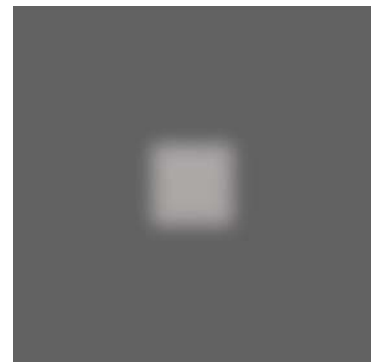
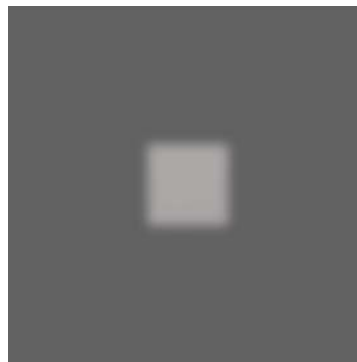
Interchangeable lenses for beam shaping & Output details



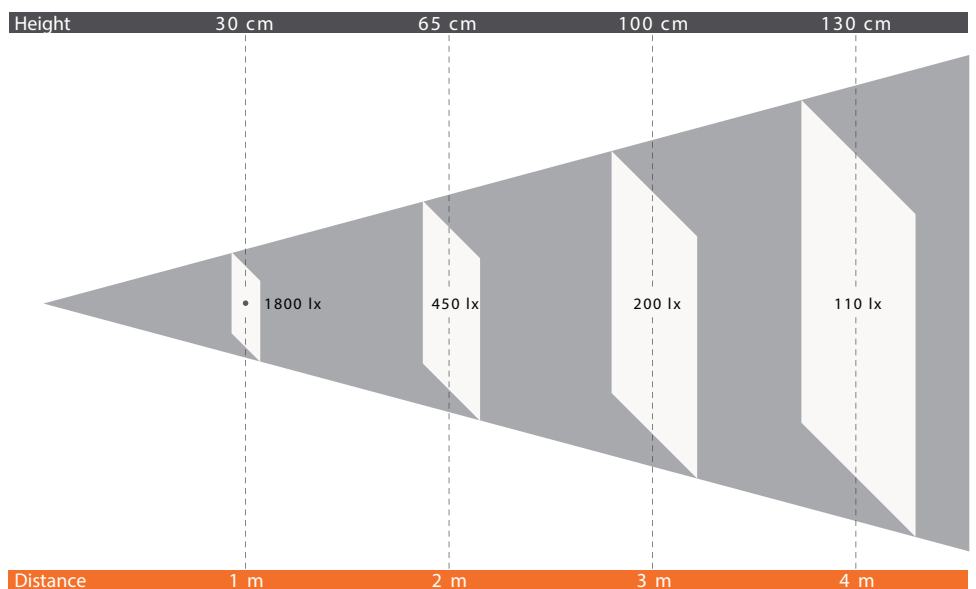
Clear  
frontal lens



Soft  
frontal lens  
(on request)



30°  
254 lm



Photometric files available. Please refer to Ilti Luce.










# PerfectBeam

Standard codes and customization

## Standard code overview - Variable Spot

product	code	CT	type	n° LED	power	frontal lens	finish	dimming	protection class IEC	IP
	MPFB7501902DBO 910504801181	2700K	Variable Spot	1	21W	clear & soft	white	onboard dim	CL II	20
	MPFB7501902WBO 910504801182	3000K	Variable Spot	1	21W	clear & soft	white	onboard dim	CL II	20
	MPFB7501902DAN 910504801183	2700K	Variable Spot	1	21W	clear & soft	black	onboard dim	CL II	20
	MPFB7501902WAN 910504801184	3000K	Variable Spot	1	21W	clear & soft	black	onboard dim	CL II	20
	MPFBASYMFILTER 910504801189	Linear frontal lens for Variable Spot								

## Standard code overview - Framing Projector

product	code	CT	type	n° LED	power	frontal lens	finish	dimming	protection class IEC	IP
	MPFB7501C02DBO 910504801185	2700K	Framing Projector	1	21W	clear	white	onboard dim	CL II	20
	MPFB7501C02WBO 910504801186	3000K	Framing Projector	1	21W	clear	white	onboard dim	CL II	20
	MPFB7501C02DAN 910504801187	2700K	Framing Projector	1	21W	clear	black	onboard dim	CL II	20
	MPFB7501C02WAN 910504801188	3000K	Framing Projector	1	21W	clear	black	onboard dim	CL II	20

## PerfectBeam - Customized options

- Finish:
  - White/Silver version (instead of White/Black)
  - Other special finishing on request
- Color Temperature
  - 4000K, CRI 80+ or CRI 90+
  - Other customized color temperatures on request
- Dimming:
  - DALI dimming
  - ON/OFF
- Accessories:
  - Soft lenses for the Framing Projector
  - Other customized frontal lenses on request
- Light Output / Spectrum:
  - Other customized light output and spectrum on request

# PerfectBeam

## Product overview table

codice/ code	colore/ colour	tipo/ type	potenza/ power	ottica/ optic	tipo di LED/ LED type	materiale/ material	finitura/ finishing	fissaggio/ fixation	IP
MPFB7501902DBO	2700K	interni/ indoor	21W	orientabile "Variable spot"/ adjustable "Variable spot"	alta emissione/ high emission	tramite staffa/ with brackets	bianco/ white	su binario/ on track	20
MPFB7501902WBO	3000K	interni/ indoor	21W	orientabile "Variable spot"/ adjustable "Variable spot"	alta emissione/ high emission	tramite staffa/ with brackets	bianco/ white	su binario/ on track	20
MPFB7501902DAN	2700K	interni/ indoor	21W	orientabile "Variable spot"/ adjustable "Variable spot"	alta emissione/ high emission	tramite staffa/ with brackets	nero/ black	su binario/ on track	20
MPFB7501902WAN	3000K	interni/ indoor	21W	orientabile "Variable spot"/ adjustable "Variable spot"	alta emissione/ high emission	tramite staffa/ with brackets	nero/ black	su binario/ on track	20
MPFB7501C02DBO	2700K	interni/ indoor	21W	orientabile "Framing projector"/ adjustable "Framing projector"	alta emissione/ high emission	tramite staffa/ with brackets	bianco/ white	su binario/ on track	20
MPFB7501C02WBO	3000K	interni/ indoor	21W	orientabile "Framing projector"/ adjustable "Framing projector"	alta emissione/ high emission	tramite staffa/ with brackets	bianco/ white	su binario/ on track	20
MPFB7501C02DAN	2700K	interni/ indoor	21W	orientabile "Framing projector"/ adjustable "Framing projector"	alta emissione/ high emission	tramite staffa/ with brackets	nero/ black	su binario/ on track	20
MPFB7501C02WAN	3000K	interni/ indoor	21W	orientabile "Framing projector"/ adjustable "Framing projector"	alta emissione/ high emission	tramite staffa/ with brackets	nero/ black	su binario/ on track	20

**Ilti Luce Srl** a Philips Company

---

Lungo Dora P. Colletta 113/9  
10153 Torino (Italia)  
tel + 39 011 248.2291 - .9412 - .7286  
Fax + 39 011 853 855  
p.iva 05966420019

[iti@ilti.uce.it](mailto:iti@ilti.uce.it)

---