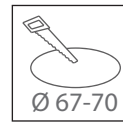
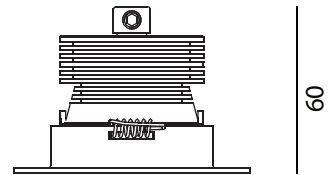
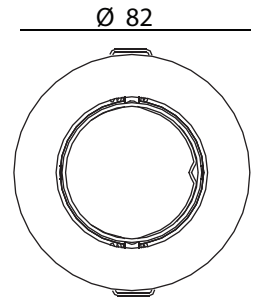


MPIXT104417WBO  
MPIXT104417NBO  
MPIXT104717WBO  
MPIXT104717NBO

MPIXT104417WNE  
MPIXT104417NNE  
MPIXT104717WNE  
MPIXT104717NNE

MPIXT104417WGM  
MPIXT104417NGM  
MPIXT104717WGM  
MPIXT104717NGM



(mm)

		7 W		IP40		$\pm 15^\circ$		max 35°																
<b>Finiture:</b> - verniciatura bianca, nera o grigia <b>Finishing:</b> - white, black or gray varnishing		<b>Warm White - medium beam (MPIXT104417W__*)</b> <table border="1"> <thead> <tr> <th>Offset(m)</th> <th>Cone width (m)</th> <th>Illuminance(lx)</th> </tr> </thead> <tbody> <tr> <td>0,5</td> <td>0,15</td> <td>5360</td> </tr> <tr> <td>1,0</td> <td>0,30</td> <td>1340</td> </tr> <tr> <td>2,0</td> <td>0,60</td> <td>330</td> </tr> <tr> <td>3,0</td> <td>0,90</td> <td>150</td> </tr> </tbody> </table>								Offset(m)	Cone width (m)	Illuminance(lx)	0,5	0,15	5360	1,0	0,30	1340	2,0	0,60	330	3,0	0,90	150
Offset(m)	Cone width (m)	Illuminance(lx)																						
0,5	0,15	5360																						
1,0	0,30	1340																						
2,0	0,60	330																						
3,0	0,90	150																						

MPIXT104\_17\_\_

This luminaire contains built-in LED lamps.

**A++**  
**A+**  
**A**  
**C**  
**D**  
**E**

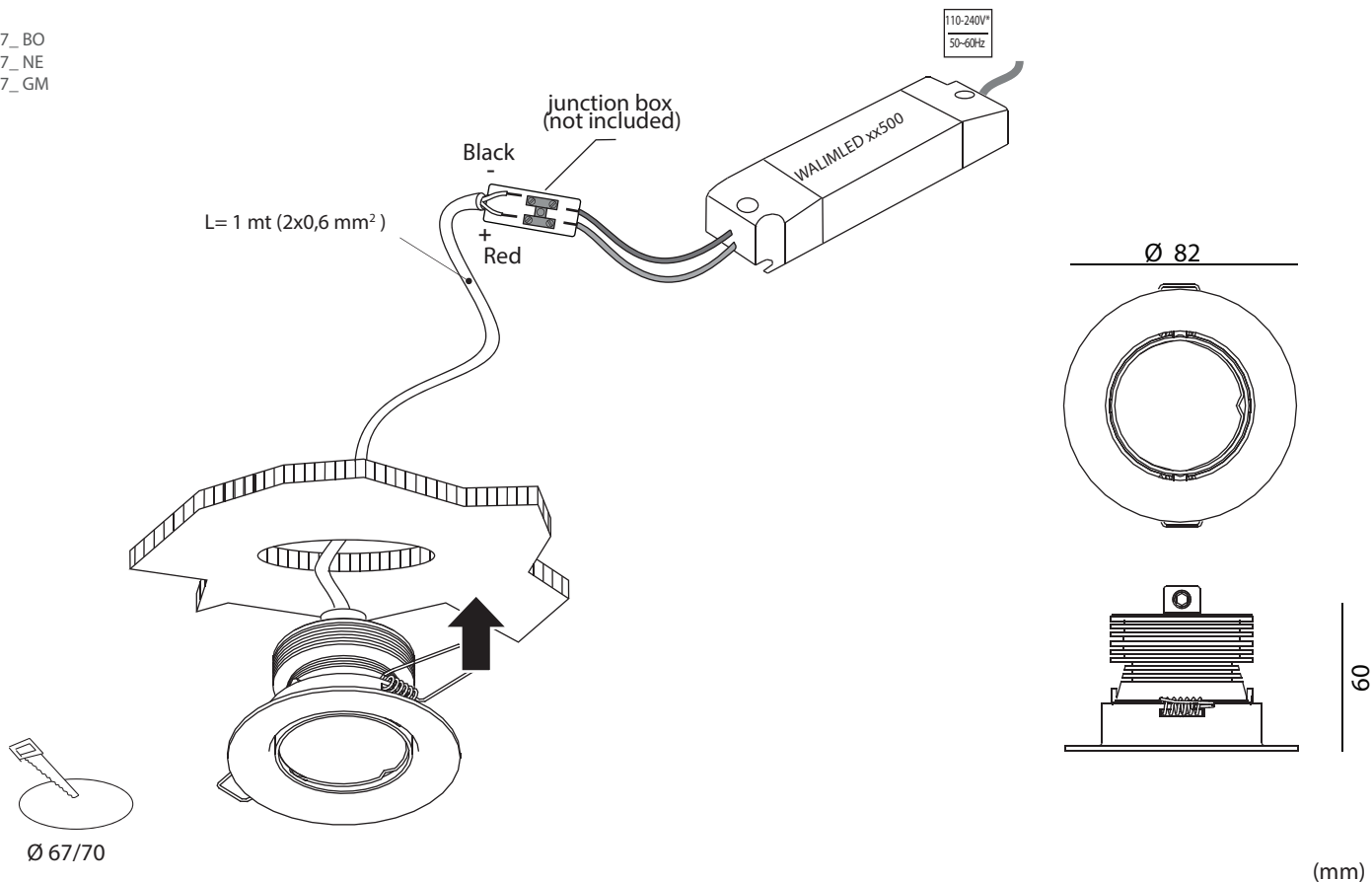
**LED**

The lamps cannot be changed in the luminaire.

874/2012

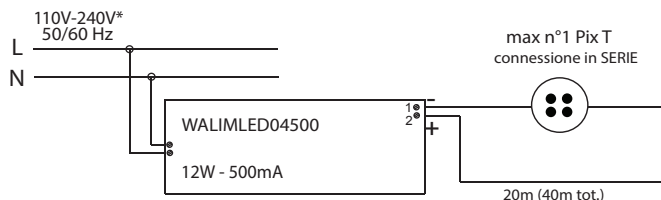
General Information	Caractéristiques Générales	Allgemeine Informationen	Informazioni generali	
Material	Matériaux	Materialien	Materiali	Aluminum
Number of light sources	Nombre de Source(s)	Anzahl Lichtquellen	Numero sorgenti lum.	4 x LED
Fixing system	Système de fixation	Befestigungssystem	Sistema di fissaggio	springs
Driver included	Driver intégré	Treiber inklusive	Driver incluso	NO
Protection class IEC	Classe électrique	Schutzklasse	Classe di isolamento	III
IP code	IP	Schutzart	Grado IP	IP40 (IP44 frontal)
IK code	IK	Schlagfestigkeit (IK)	Grado IK	/
Optic type	Optique	Optik	Ottica	25° - 40°
Cable	Câble	Kabel	Cavo	1m
Dimmable	Gradable	Dimmbar	Dimmerabile	YES
European Community mark	Marquage CE	CE-Zeichen	Marchio comunità europea	CE
Lifetime to 80% luminous flux	Durée vie 80% flux lumineux	Lebensdauer bis 80% Lichtstrom	Durata funzion. (80% flusso)	50 000 h
Weight (kg)	Poids (kg)	Gewicht (kg)	Peso (Kg)	0,30 kg
Electrical	Caractéristiques Electriques	Elektrische Kenndaten	Corrente	
Input voltage	Tension d' alimentation	Netzspannung	Tensione di alimentazione	500 mA
Initial performances	Performances initiales	Anfängliche Leistung	Performance iniziali	
Initial input power	Initial input power	Systemleistung	Potenza di sistema	7 W
Initial luminous flux	Initial luminous flux	Lichtstrom	Flusso luminoso iniziale	315 lm*
Initial LED luminaire efficacy	Initial LED luminaire efficacy	Effizienz	Efficienza luminosa iniziale	45 lm/W
Init. Corr. Color Temperature	Init. Corr. Color Temperature	Farbtemperatur	Temperatura colore lampada	3000 - 4000 K
CRI	IRC	CRI	CRI	>90
Application conditions	Conditions d'application	Einsatzbedingungen	Condizioni applicazione	
Ambient temperature range	Température ambiante	Umgebungstemperatur	Temperatura ambiente	max.35 °C

MPIXT104\_17\_BO  
MPIXT104\_17\_NE  
MPIXT104\_17\_GM



(mm)

#### Esempio di collegamento (connessione in serie)/ Example of connection (serial connection)



\* Verificare la tensione di ingresso supportata dagli alimentatori / Verify the input tension supported from drivers

#### Alimentatori/ LED Drivers

Codice/Code non inclusi/not included	Caratteristiche/ Specifications	n. faretti/ n.spots
WALIMLED04500	12W - 500mA	1
WALIMLED08500	20W - 500mA	min 2/max 2**
WALIMLED12500	26W - 500mA	3
WALI/DIMM/JOLLY	22W - 500mA	2**
WBOKVAR	variatore/dimmer 1/10V	/

\*\*connessione in SERIE/Serial connection



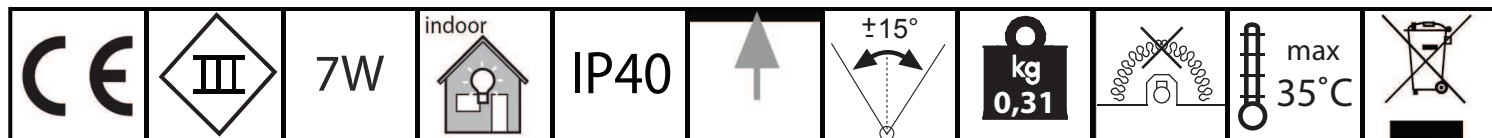
GENERALI / GENERALS  
CABLAGGIO / WIRING

- L'installazione deve essere fatta da personale qualificato.
- Installation should be carried out by a suitable qualified installer.
- In caso di guasti, previa autorizzazione al reso di ILTI Luce, il prodotto non dovrà essere né aperto né smontato.
- In case of failure, upon a return authorization of ILTI LUCE, the product will be not neither open or dismounted.
- Dare tensione all'impianto solo dopo aver collegato tutti i LED all'alimentatore.
- Connect the fitting to the power supply only after connecting all LED to the driver.
- Tutte le operazioni di cablaggio e manutenzione vanno eseguite con l'interruttore generale in posizione OFF.
- All wiring and maintenance must be performed with the main switch in the OFF position.



SMALTIMENTO/  
DISPOSAL

Secondo la direttiva comunitaria WEEE (Waste Electrical and Electronic Equipment) l'apparecchio non può essere smaltito con i rifiuti indifferenziati. Deve essere portato nelle strutture locali per lo smaltimento ed il riciclaggio dei prodotti elettronici.  
In accordance with EU Directive WEEE (Waste Electrical and Electronic Equipment), luminaires must not be disposed of with other household waste. At the end of their life, luminaires must be taken to the appropriate local facility available for the disposal or recycling of electronic products.



si consiglia la conservazione delle seguenti istruzioni - we suggest you to keep this copy for your files

MPIXT104417W\_\_

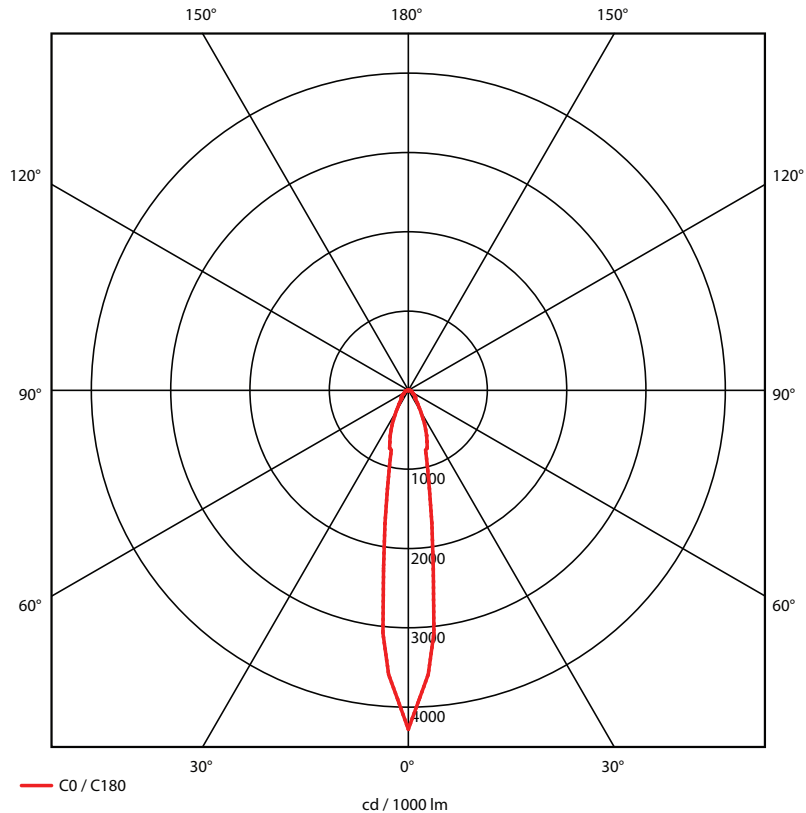


tabella di riepilogo prodotti/ product overview table

codice/ code	colore/ colour	tipo/ type	potenza/ power	tipo di LED/ LED type	fascio ottico/ optic beam	ottica/ optic	materiale/ material	finitura/ finishing	fis saggio/ fixation	montaggio/ mounting	IP/ IP
MPIXT104417WBO	warm white	interni/ indoor	7W	alta emissione/ high emission	medium beam	orientabile/ adjustable	alluminio/ aluminum	bianco/ white	con viti/ with screws	ad incasso / recessed	40
MPIXT104417NBO	neutral white	interni/ indoor	7W	alta emissione/ high emission	medium beam	orientabile/ adjustable	alluminio/ aluminum	bianco/ white	con viti/ with screws	ad incasso / recessed	40
MPIXT104417WNE	warm white	interni/ indoor	7W	alta emissione/ high emission	medium beam	orientabile/ adjustable	alluminio/ aluminum	nero/ black	con viti/ with screws	ad incasso / recessed	40
MPIXT104417NNW	neutral white	interni/ indoor	7W	alta emissione/ high emission	medium beam	orientabile/ adjustable	alluminio/ aluminum	nero/ black	con molle/ with springs	ad incasso / recessed	40
MPIXT104417WGM	warm white	interni/ indoor	7W	alta emissione/ high emission	medium beam	orientabile/ adjustable	alluminio/ aluminum	grigio/ grey	con molle/ with springs	ad incasso / recessed	40
MPIXT104417NGM	neutral white	interni/ indoor	7W	alta emissione/ high emission	medium beam	orientabile/ adjustable	alluminio/ aluminum	grigio/ grey	con molle/ with springs	ad incasso / recessed	40
MPIXT104717WBO	warm white	interni/ indoor	7W	alta emissione/ high emission	wide beam	orientabile/ adjustable	alluminio/ aluminum	bianco/ white	con molle/ with springs	ad incasso / recessed	40
MPIXT014717NBO	neutral white	interni/ indoor	7W	alta emissione/ high emission	wide beam	orientabile/ adjustable	alluminio/ aluminum	bianco/ white	con molle/ with springs	ad incasso / recessed	40
MPIXT104717WNE	warm white	interni/ indoor	7W	alta emissione/ high emission	wide beam	orientabile/ adjustable	alluminio/ aluminum	nero/ black	con molle/ with springs	ad incasso / recessed	40
MPIXT104717NNE	neutral white	interni/ indoor	7W	alta emissione/ high emission	wide beam	orientabile/ adjustable	alluminio/ aluminum	nero/ black	con molle/ with springs	ad incasso / recessed	40
MPIXT104717WGM	warm white	interni/ indoor	7W	alta emissione/ high emission	wide beam	orientabile/ adjustable	alluminio/ aluminum	grigio/ grey	con molle/ with springs	ad incasso / recessed	40
MPIXT104717NGM	neutral white	interni/ indoor	7W	alta emissione/ high emission	wide beam	orientabile/ adjustable	alluminio/ aluminum	grigio/ grey	con molle/ with springs	ad incasso / recessed	40