

**PHILIPS**

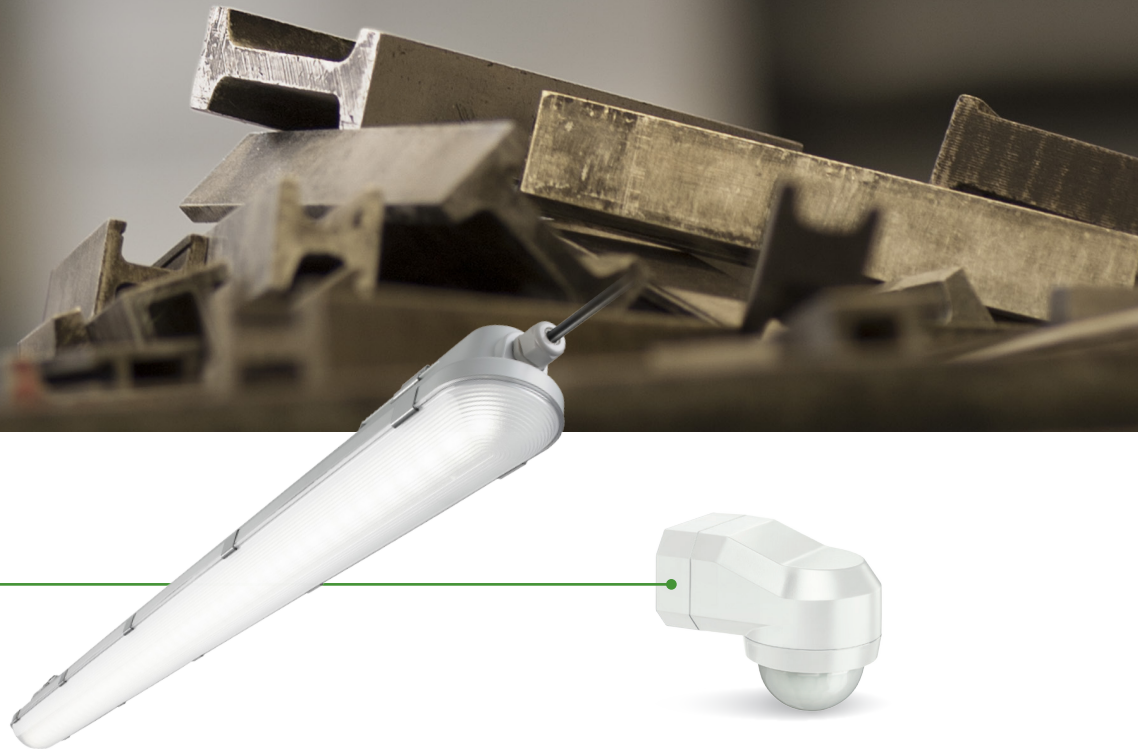
Application bundles



# Industry

Combine an LED luminaire with an intelligent control for maximum performance and savings

Up to  
**65%**  
energy savings



**Your Industry application bundle:**  
CoreLine Waterproof LED60S & Movement detector LRM1040

## Industry lighting insights

There is work to be done, and the workspace is big, with people and goods moving in and out. Here, productivity and safety must go hand in hand.

Industrial applications require effective lighting on a large scale, which means that low energy consumption and low maintenance are a must. But the lighting also needs to create a clear, safe and pleasant environment. With Philips lighting controls, the light switches off whenever the space is not being used, for extra savings.



More info:  
[www.philips.com/coreline](http://www.philips.com/coreline)

### Traditional

Conventional waterproof 2x58 W TLD (16x)

Savings over life\*

**€7828,-**

€11.659,-

€3830,-

### Application bundle

CoreLine Waterproof LED60S (16x) incl. detector

\*Based on the European average of 12 cent/kW hours (including maintenance and lamp replacement cost) and the lighting design for this application bundle.

## Bundle benefits

### CoreLine Waterproof LED60S



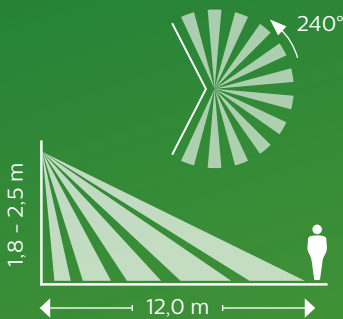
- Replacing conventional TL-D
- Energy saving

### Movement detector LRM1040



- Daylight override prevents switch on if enough daylight is available
- Turns off lighting when not required
- IP54

#### Detection coverage diagram



## Bundle specifications

### CoreLine Waterproof LED60S

Type	WT120C LED60S/840 PSU L1500
Power	57 W
Luminous Flux	6000 lm
Color temperature	4000 K
Color Render Index	≥ 80
Lifetime	50,000 hours
Number of luminaires on MCB 16A type B	≤ 24
Ordering (EOC) code	84049700

### Movement detector LRM1040

Detecting range at 2,5 m height	12 m
Recommended mounting height	1,8 - 2,5 m (wall mounting)
Switch off delay	5 sec. - 12 min.
Number of luminaires on one control	≤ 24
Ordering (EOC) code	22573700

## Lighting design insights

#### Uniformity

Use wide light beams in order to increase uniformity. High uniformity contributes to a comfortable workplace without disturbing shadows.

#### Waterproof luminaires

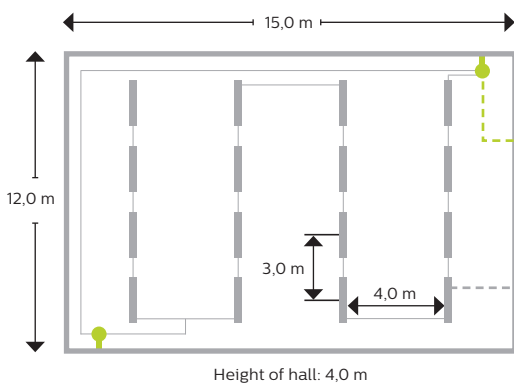
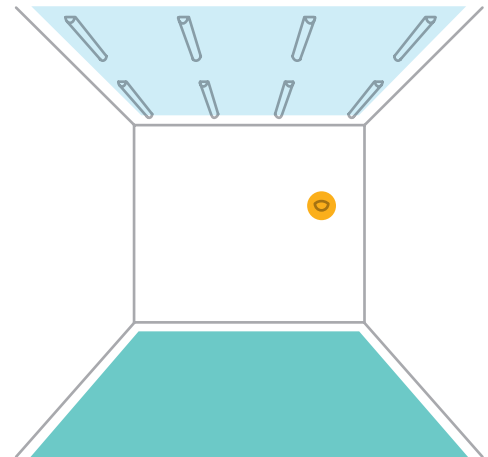
Many industrial environments are wet or dusty. Use waterproof luminaires for safe and reliable lighting.

#### Controls

When placing a presence detector consider entrances and exits to avoid going into a dark area. Also take into account high furniture and machinery. These can block the detection zone.

#### Illuminance requirements

EN12464-1 requirement at task ≥ 300 lux for general machinery work. Higher levels increase visibility.



## Lighting design industry



Luminaire types	# Lum.	Em [lux]	Sys. Power	Installed Power	W/m2	W/m2/100lux
Conventional waterproof 2xTLD 58 W	16	336	110 W	1760 W	9,8	2,9
<b>CoreLine Waterproof LED60S</b>	<b>16</b>	<b>328</b>	<b>57 W</b>	<b>928 W</b>	<b>5,2</b>	<b>1,6</b>