

The Philips logo, consisting of the word "PHILIPS" in a bold, blue, sans-serif font, is positioned in the upper left corner of the page. The background of the entire page is a dark, atmospheric scene filled with numerous warm, glowing light sources, likely incandescent bulbs, which are out of focus, creating a bokeh effect. Some of the light sources are more prominent, showing the glass envelope of the bulbs. The overall mood is warm and sophisticated.

Luminous Patterns

Luminous Patterns **patterns catalogue**

Transforming surfaces into luminous experiences



Add a
a brilliant backdrop
to your projects

Our pattern styles

Fuse light into architectural materials

Luminous Patterns panels come in four unique light styles: round and linear nodes and radiant 3D and 2D cutouts. Blend patterns of light with material expression. Infuse surfaces with brilliance and sparkle. Transform mundane walls into sublime experiences. Bring the play of brilliants on architectural surfaces.

The panels are fully customizable and offer design options to suit any interior, from retail settings to offices and from hospitality to healthcare. Create a custom design or choose a pattern from our ever-expanding pattern database. Choose from numerous coating and color options to match your interior and integrate warm or cool white or full RGB LED light in your design. Animated light shows bring your designs to life.

Hospitality



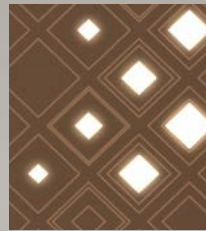
Office



Healthcare



Retail





Most designs are available in both durable powdercoatings and high-quality architectural foils. Printing graphics directly on the panels is possible with UV-cured printing.

Contact our team to learn more of the available options!



Endless design options

to suit any interior

Every Luminous Patterns panel is built to order, providing a maximal freedom of design. The panels can be manufactured in any size from 400 x 400 mm to 600 x 1800 mm in five-millimeter increments. Non-rectangular geometries are also available.

According to your wishes, the panels can be coated with either durable powdercoatings with different

finishes or with high-quality architectural foils available in hundreds of designs. Powdercoated designs of any color can be combined with UV-cured printing in full color.

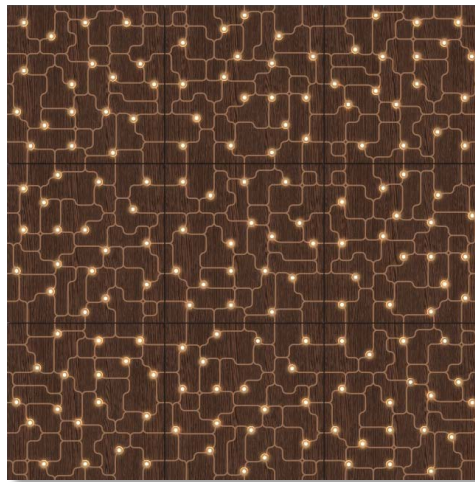
The panels come with programmed (custom) light shows: think of a soothing soft warm flicker in the round nodes resembling candlelight or a vibrant full-RGB flare across the radiant 3D cutouts.

Ignite your creativity and discover how Luminous Patterns can enhance the experience of your interiors!

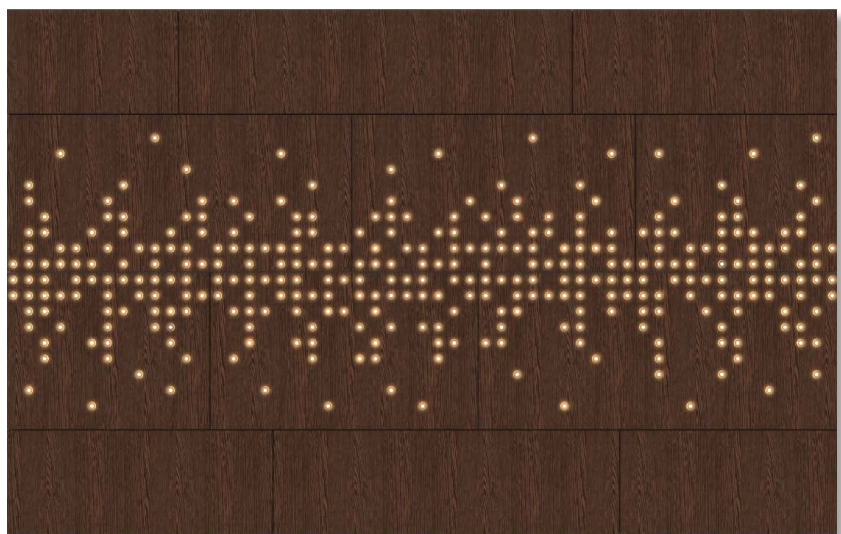




Branches pattern, three-panel installation.
DI-NOC Architectural foil 'Dark oak' and a graphic print.



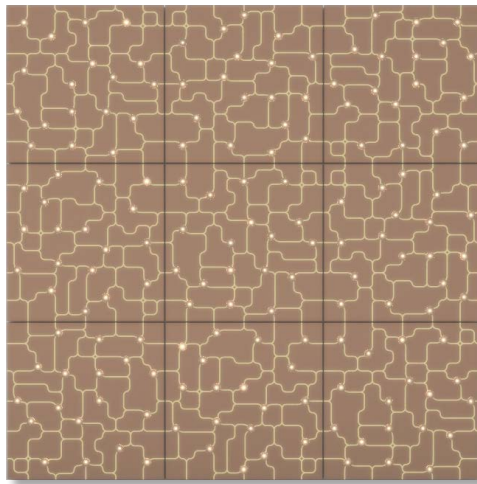
Metro pattern, nine-panel installation.
DI-NOC Architectural foil 'Dark oak' and a graphic print.



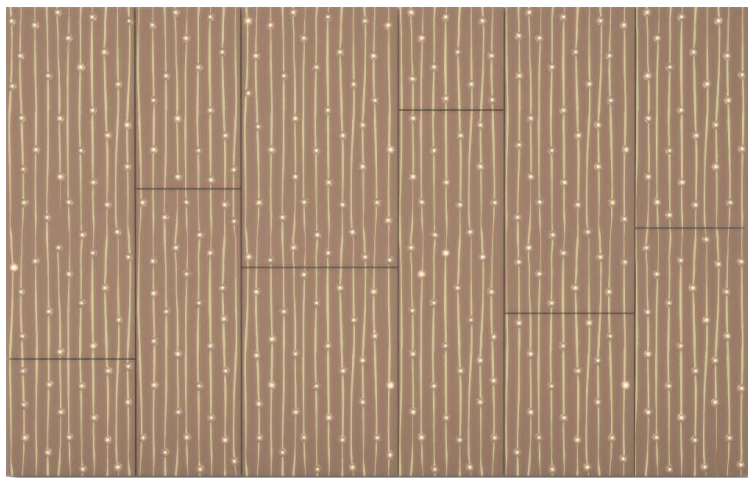
Sparkling Horizon, complete wall solution.
DI-NOC Architectural foil 'Dark oak' and a graphic print



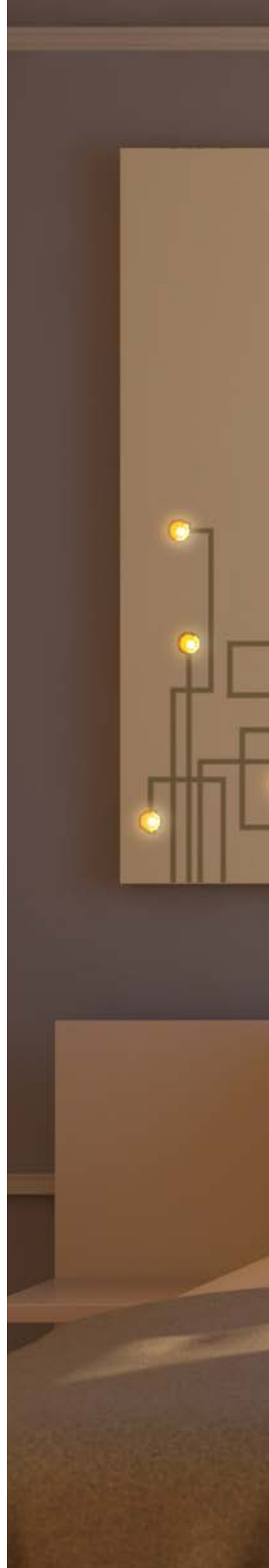
**Branches pattern, three-panel installation.
Powdercoating 'Umber' and a graphic print.**



**Metro pattern, nine-panel installation.
Powdercoating 'Umber' and a graphic print.**



**Happy Rain, complete wall solution.
Powdercoating 'Umber' and a graphic print.**





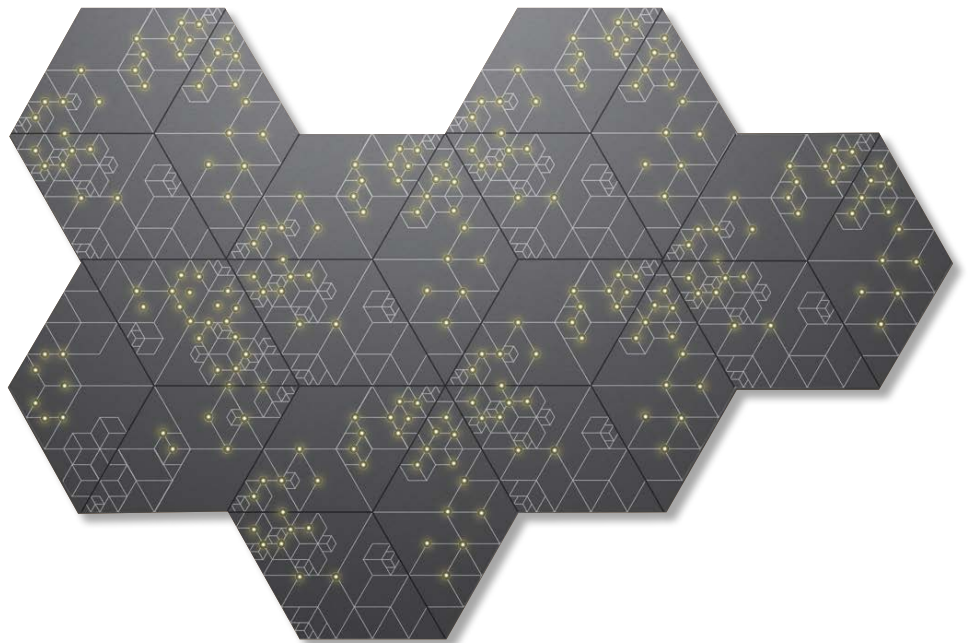




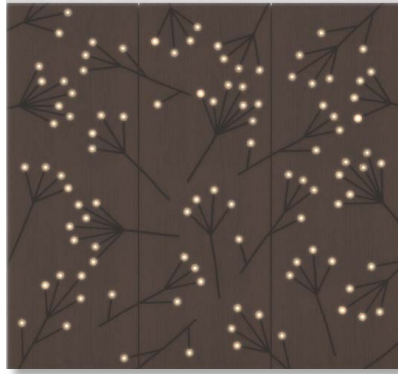
**Network pattern as a custom design, three-panel installation.
Powdercoating 'Steel Blue Gray' and a graphic print.**



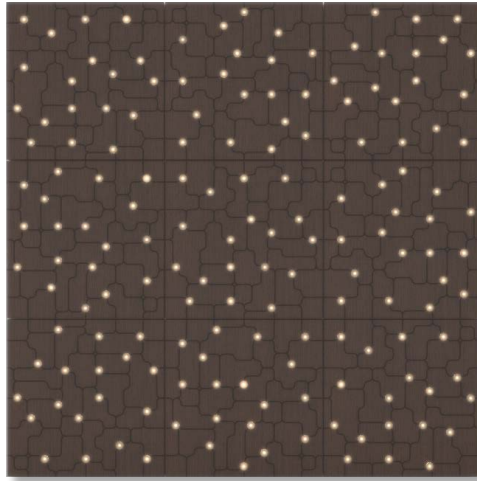
**Network pattern as a tiled solution, three-panel installation.
Powdercoating 'Steel Blue Gray' and a graphic print.**



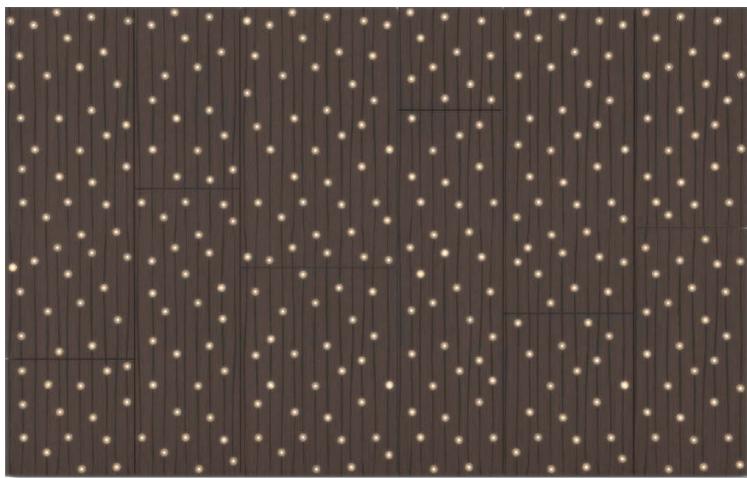
**Hexagon pattern applied on custom geometry panels.
Powdercoating 'Steel Blue Gray' and a graphic print.**



Branches pattern, three-panel installation.
DI-NOC Architectural foil 'Fine grain' and a graphic print.



Metro pattern, nine-panel installation.
DI-NOC Architectural foil 'Fine grain' and a graphic print.



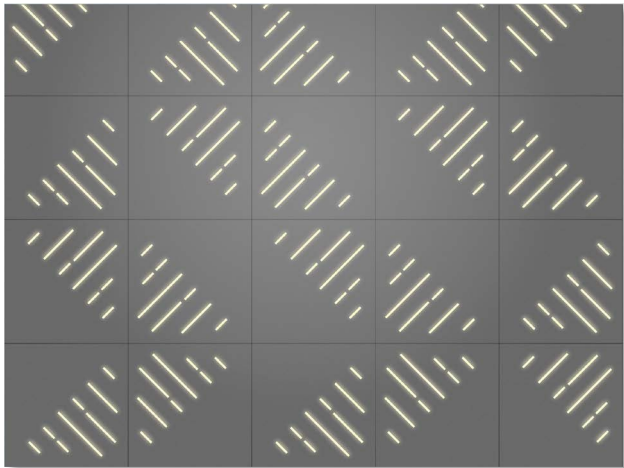
Happy Rain, Complete wall solution.
DI-NOC Architectural foil 'Fine grain' and a graphic print.



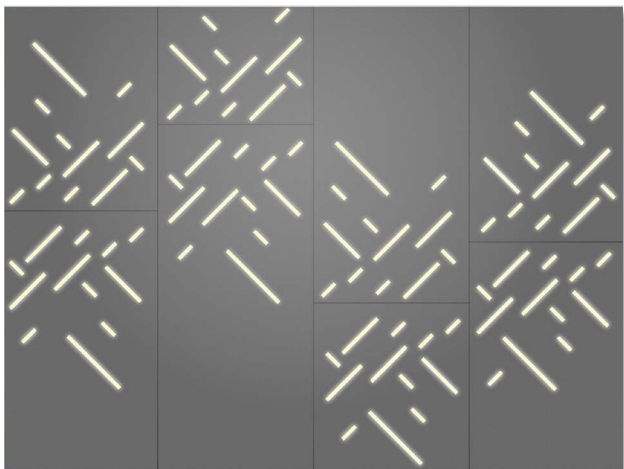




**Diagonals pattern, four-panel installation.
Powdercoating 'Steel Blue Gray' .**



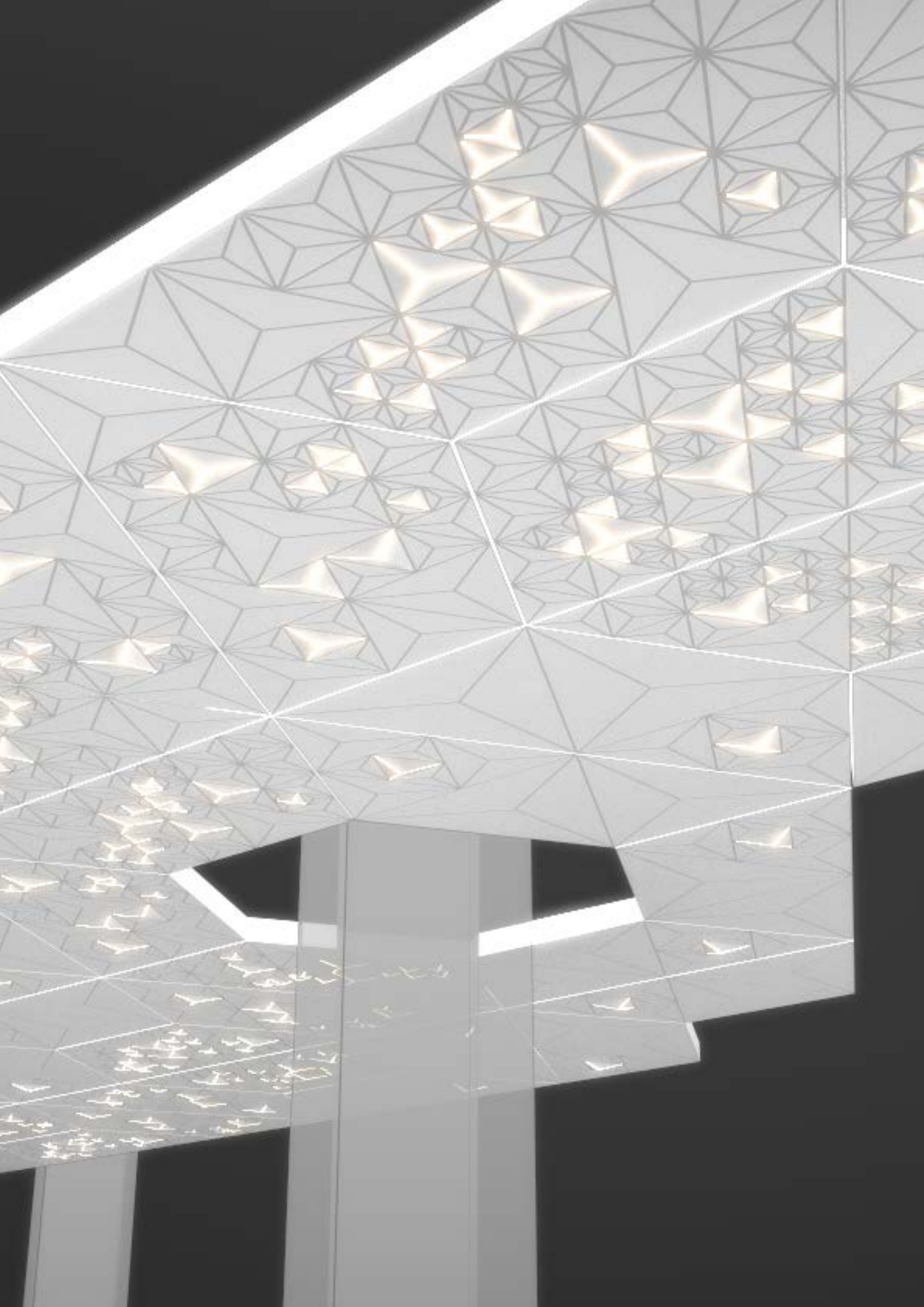
**Diagonal lines pattern, complete wall solution.
Powdercoating 'Steel Blue Gray'.**

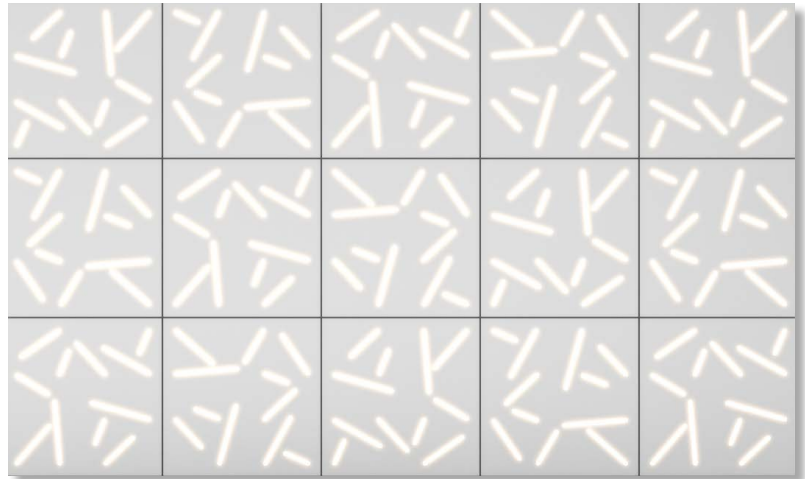


**Diagonals pattern as custom design, eight-panel installation.
Powdercoating 'Steel Blue Gray'.**

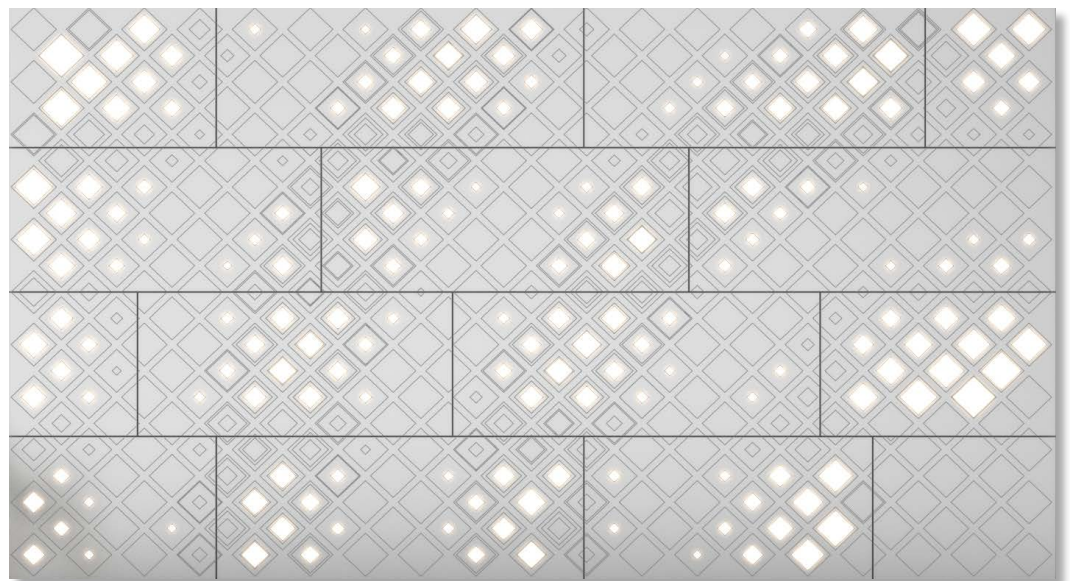




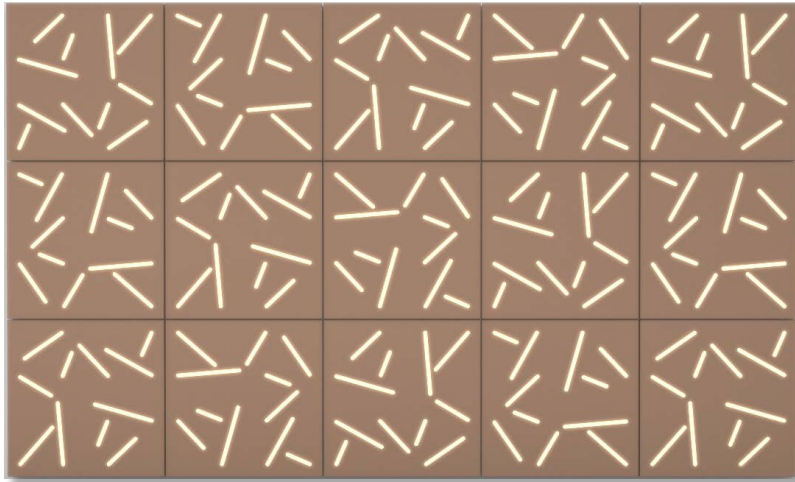




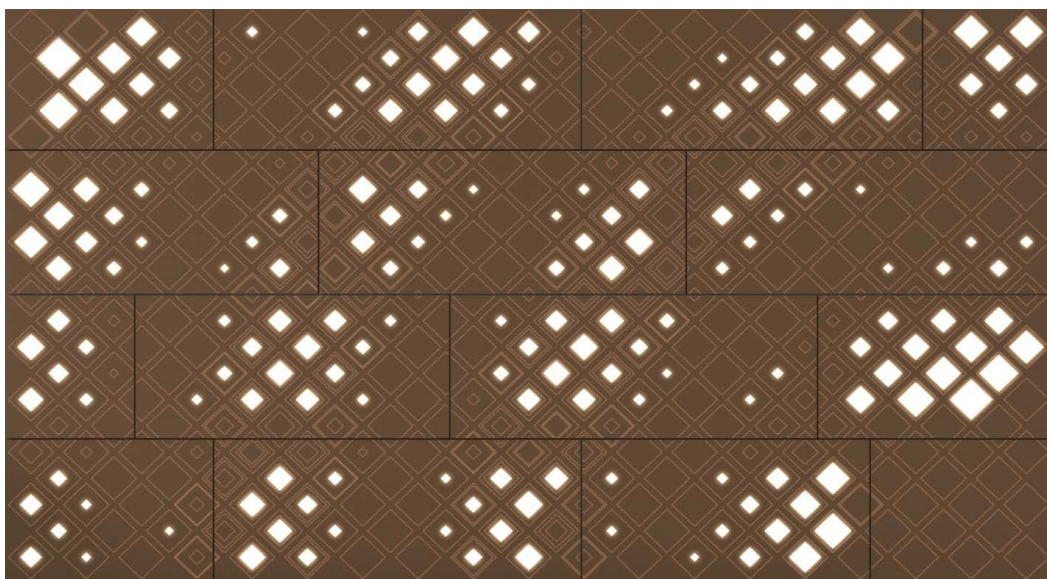
**Sprinkles pattern, 2D cutout, complete wall solution.
White powdercoating.**



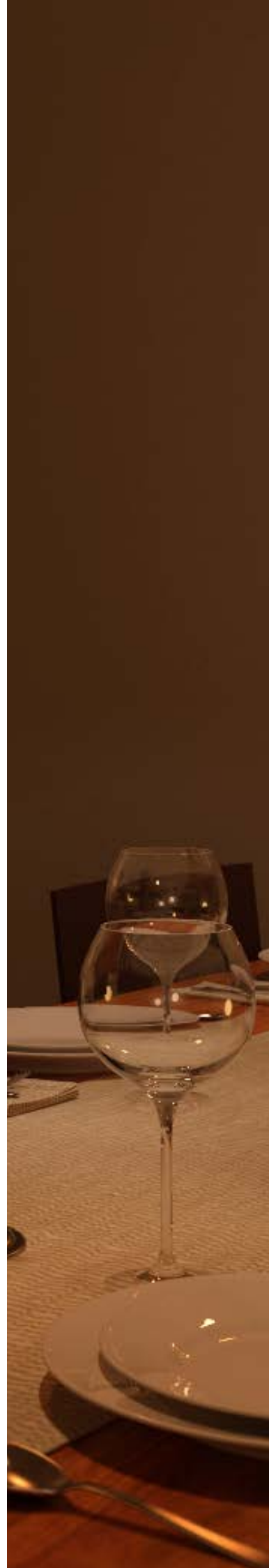
**Diamonds pattern, 2D cutout, complete wall solution.
White powdercoating and a graphic print.**



**Sprinkles pattern, 2D cutout, complete wall solution.
Powdercoating 'Umber'.**



**Diamonds pattern, 2D cutout, complete wall solution.
DI-NOC Architectural foil 'Dark oak' and a graphic print.**





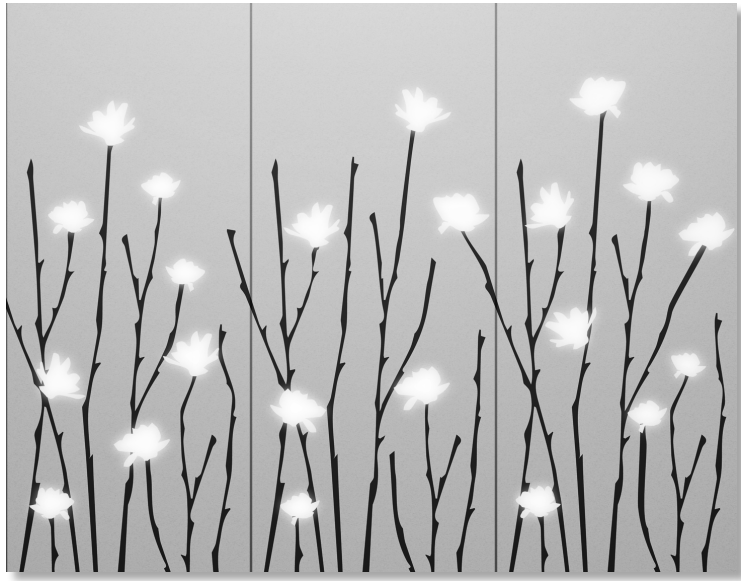




**Thin Floral pattern, 2D cutout, four-panel installation.
White powdercoating and a graphic print.**



**Magnolia pattern, 2D cutout, three-panel installation.
Powdercoating 'Driftwood' and a graphic print.**

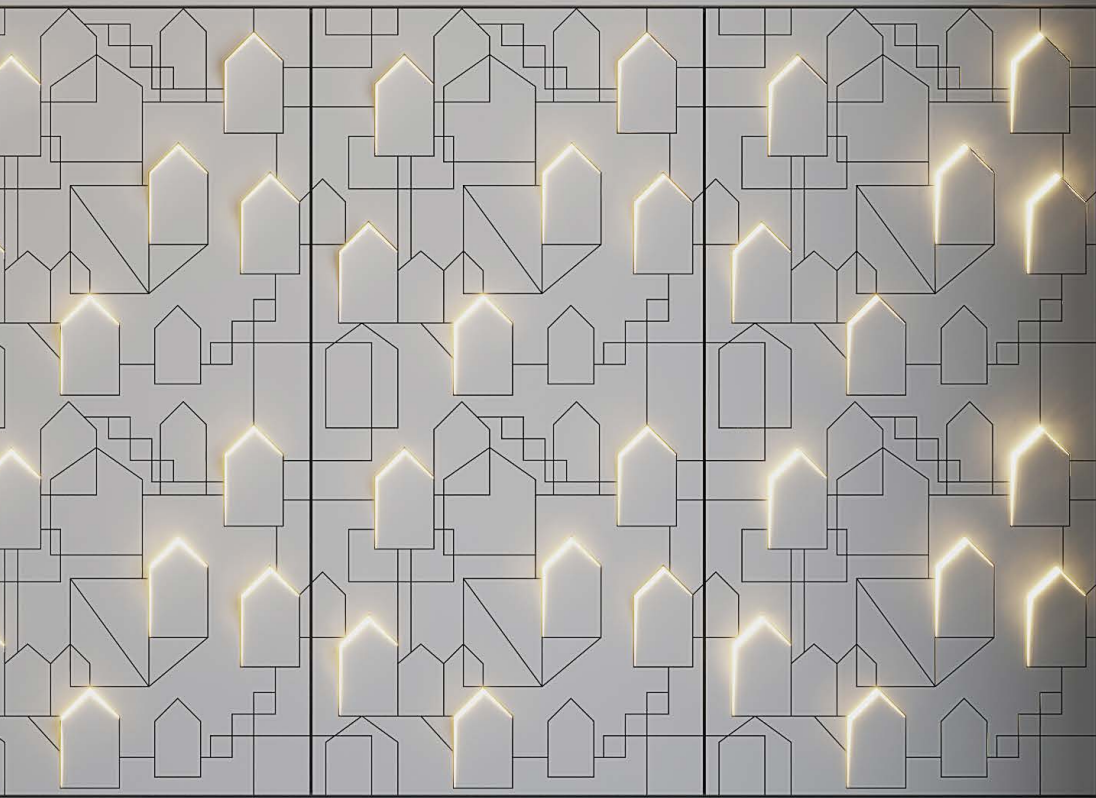


Magnolia pattern, 2D cutout, three-panel installation.
Light grey powdercoating and a graphic print.



Origami pattern, 2D cutout, four-panel installation.
Turquoise powdercoating and a graphic print.







Who are we

Philips Luminous Patterns is a new venture within Philips Lighting.

Our mission is to transform architectural surfaces into luminous experiences. We are a small dedicated team who want to help you in crafting your interior.

Feel free to contact us for projects, suggestions, ideas and more. We would love to hear from you!

Contact us at

luminouspatterns@philips.com



Patrick Struble

Sales and marketing manager - Europe



Roy Scheepens

Sales and marketing manager - America



Shirley Xu

Sales and marketing manager - Asia

Our website
www.luminouspatterns.com

Our online design generator
www.luminouspatternsdesign.com

