

## SL SUNLED 10



The SL SUNLED 10 has ten cells of fixed white LEDs to deliver a blended wash of warm white light. Similar to the traditional and popular halogen strip light effect, the SUNLED 10 offers reduced power consumption, low heat output, and minimal maintenance.

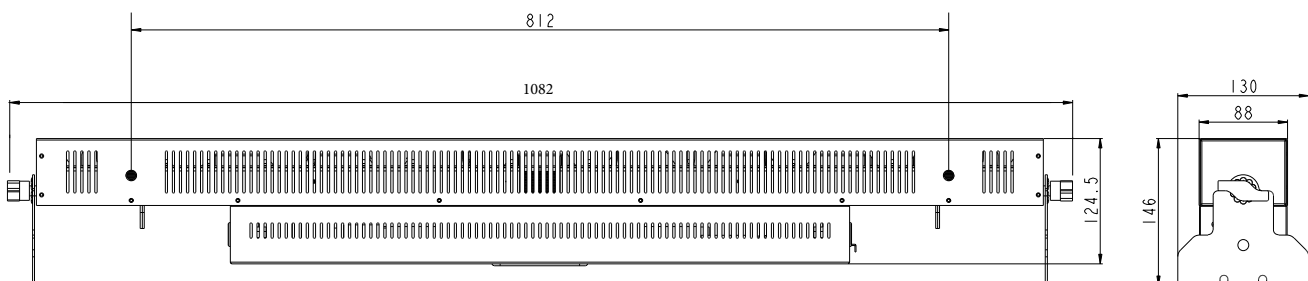
A tungsten mimic option shifts the color temperature as the luminaire dims, providing the distinctive warm tungsten feel at lower light levels. The SL SUNLED 10 can easily replace the halogen striplight effect in your designs without compromising the look and feel of your production.

Configure the SL SUNLED 10 remotely via RDM, or locally through the comprehensive Showline LCD menu system.

### Features:

- Rugged construction
- Delivers over 6000 lumens
- Sturdy single piece yoke and multiple hanging points
- 16 degree beam angle
- Flicker free operation
- 8 bit DMX-512A operation
- Comprehensive Showline LCD Menu System for addressing and setup
- Remote configuration available via RDM
- 5 pin XLR plugs for DMX-512A(RDM) IN and THRU
- Neutrik powercon for IN and THRU connections

### Drawing Diagram:



## Technical Specifications:

<b>Version:</b> SL SUNLED 10	<b>Features:</b> Silent passive cooling ideal for studio environments Multiple mounting points allows innovative hanging positions
<b>Optics:</b> 16 degree beam angle 10 high power fixed white (2700K)LEDs	<b>Physical:</b> 100-240V, 150W 1082mm x 146mm x 130mm
<b>Controls:</b> DMX-512A(RDM) Local LCD control Master / Slave	<b>8.8 kgs</b> IP20 CE, C-Tick
<b>Modes:</b> 15 Channel control 5, 2, or 1 zone control Simple 10 channel control	<b>Luminance:</b> 6039 lumens

## Ordering Information:

**88-095-5662-76**

**SLSUNLED10**

**Showline SL SUNLED 10 Tungsten LED strip, with single yoke and powercon input cable.**

*Philips Group 2016. All rights reserved.*

*The Company reserves the right to make any variation in design or construction to the equipment described. E&OE. Philips Entertainment delivers fully integrated lighting solutions; from simple lamps to complete systems designed with the specific needs of the entertainment and specialized display lighting markets.*

[www.philips.com/showline](http://www.philips.com/showline)

Philips Entertainment U.S.  
10911 Petal Street Dallas,  
TX 75238  
U.S.A  
Tel: +1 214647 7880 Fax:  
+1 214647 8030

Philips Entertainment Lighting Asia Limited  
Unit C, 14/F, Roxy Industry Centre  
No. 41 - 49 Kwai Cheong Road  
Kwai Chung, N.T. Hong Kong  
Tel: +852 27969786  
Fax: +852 27986546

Philips Entertainment Group Europe  
Rondweg Zuid 85  
Winterswijk 7102 JD Netherlands  
Tel: +31 543-542343  
Fax: +31 53 4500425

Philips Entertainment New Zealand  
19 - 21 Kawana Street, Northcote  
Auckland 0627, New Zealand  
Tel: +64 9481 0100  
Fax: +64 9481 0101