



PHILIPS

Entertainment
lighting

EMEA lighting and controls catalogue 2017



Connected solutions
putting you in control

innovation ✨ you

Intelligent lights / moving heads

Since the beginning, Vari-Lite has led the world in automated lighting technology; developing pioneering products with an unrivaled reputation. Today, lighting professionals in theater, television, concerts, motion pictures, corporate shows and advertising, look to Vari-Lite and Showline for inspiration and support for their productions.

AC/DC Rock or Bust tour

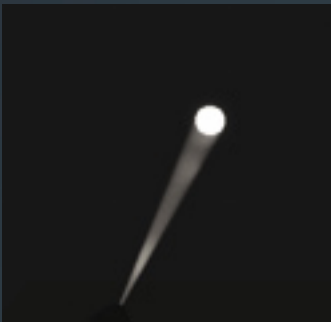
Lighting designer: Patrick Woodroffe

Photography: Ralph Larmann



Gobos and mid-air effects apertures can add an extra dynamic to any lighting show. Philips Vari-Lite and Showline products are packed with a variety of fabulous pre-loaded gobos. With access to the Vari-Lite library the choice is endless.

Illustrated are the pre-loaded wheels from the SL HYDRUS 350, SL LEDSPOT 300 and the impressive new VL6000 Beam. For more inspiration check out the extensive Vari-Lite library



SL HYDRUS 350 only
Aperture - reducer small



SL HYDRUS 350 only
Aperture - reducer medium



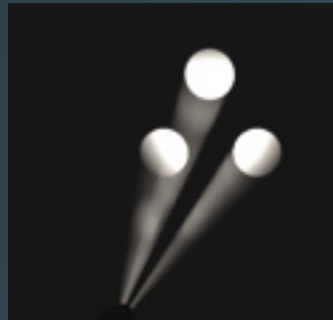
SL HYDRUS 350 only
Aperture - reducer large



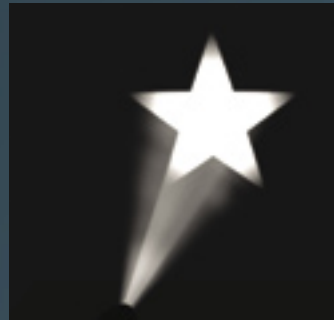
SL HYDRUS 350 only
Aperture - slot



SL HYDRUS 350 only
Aperture - cross



SL HYDRUS 350 only
Aperture - tri-dot



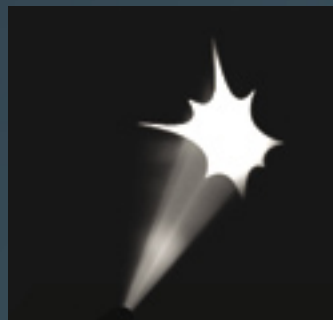
SL HYDRUS 350 only
Aperture - star



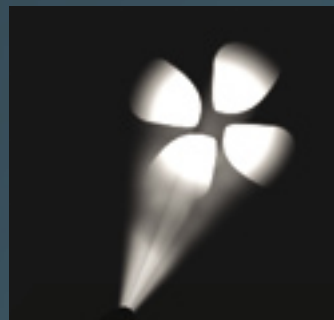
SL HYDRUS 350 only
Aperture - tri-slot



SL HYDRUS 350 only
Aperture - bar breakup



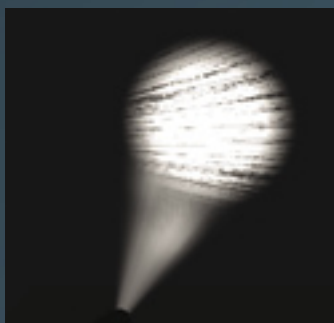
SL HYDRUS 350 only
Aperture - splat



SL HYDRUS 350 only
Aperture - clover



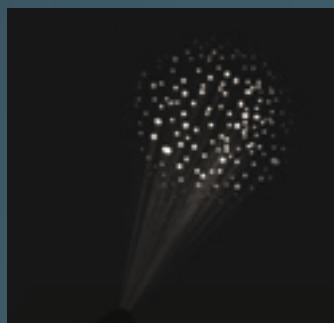
Stack of ovals



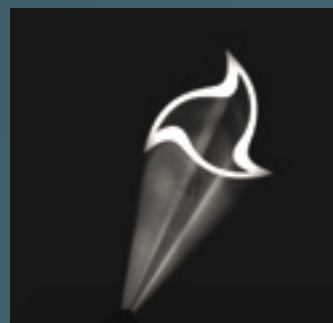
Alpha rays



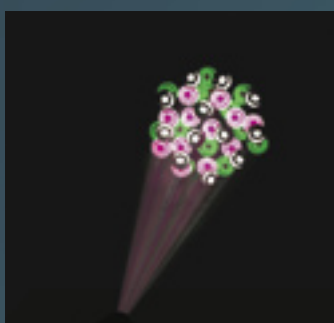
Blades



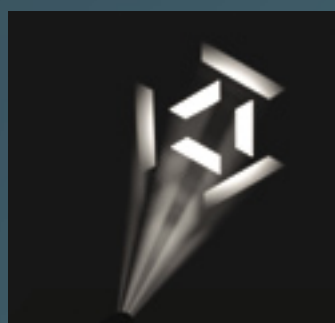
Night sky



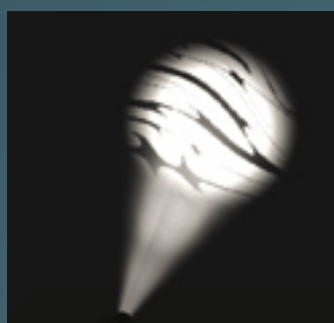
Wavy triangles



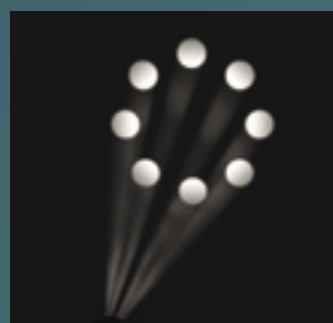
Gamma



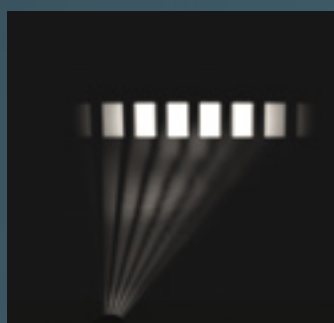
Sliced



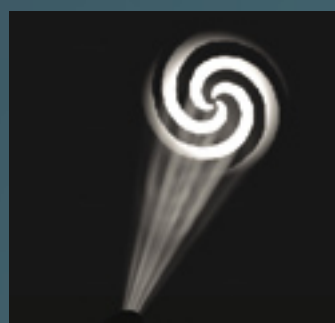
Swirl



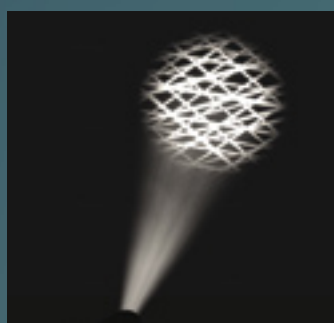
Circle of holes 1



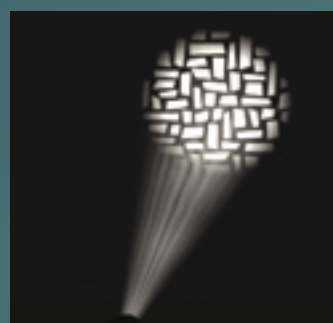
Punch card



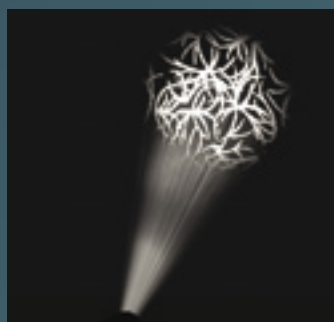
Cyclone spiral



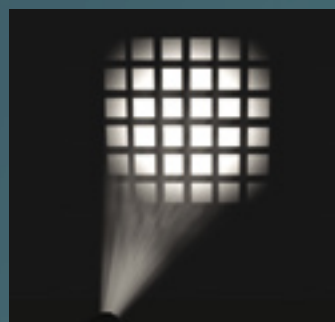
Lattice



Bricked out



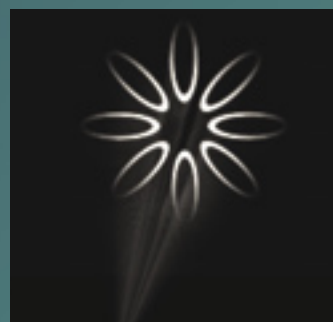
Tribal



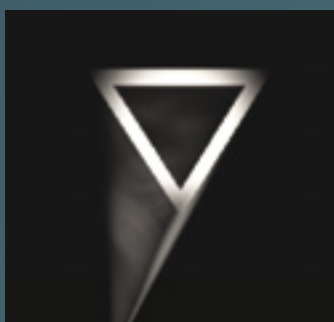
Grid



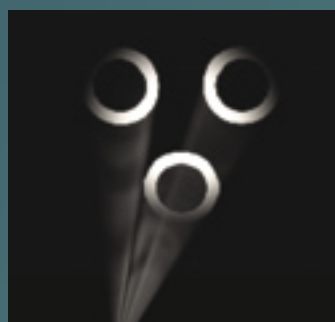
Honeycomb



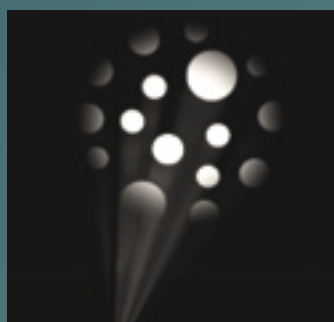
Circle of ovals



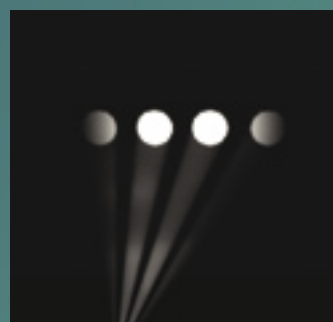
Medium triangle



Tri-cone



Ballz



4 hole ray

ArenaVision LED Philips moving

Philips Lighting Arena Experience have recently completed the installation at Amsterdam ArenA. Being innovation partners of Philips Lighting, this world renowned soccer stadium and multi event venue has been equipped with the ArenaVision LED floodlight system, upgrading their pitch lighting into the highest UEFA 'A Elite' category. Included in the lighting system are 14 of our impressive new intelligent moving head Philips VL6000 Beam – a world premiere.

The Amsterdam ArenA is the base for Ajax soccer club – as well as being an ongoing event venue, hosting headlining concerts and shows throughout the year. It offers a spectacular combination of our dynamic LED pitch lighting in combination with Philips Vari-Lite VL6000 Beam to integrate or enhance any show.

with integrated heads



Amsterdam Arena

Photography: Redshift Photography

Beam

VL 6000 BEAM



Source	PGJX50
Lamp cap	FastFit
Wattage	1500W
Lumen output (max.)	55,000
Color temperature	6300K
CRI	>80
Beam angle	6.4°
Pan / tilt	540° / 242°
Controls	DMX512-A / RDM
DMX channels	23
Color system	3 fixed color wheels
Gobo / effects	1 x 7 + open index / rotating wheel
Independent rotating prism	No
Independent frost	Yes
Dimmer / strobe	Mechanical glass wheel / dual independent strobe blades
Framing shutters / beam shaping	No
Color calibration	N/A
Accessories	N/A
Operating voltage	200-240VAC, 50/60Hz
IP rating	IP22
Operating temperature	-20-50°C non-condensing 33-50°C condensing
Construction	Metal frame, engineering plastic covers
Finish	Black
Dimensions L x H x W	660 x 605 x 600mm
Hanging centers	622mm
Weight	28kg
Warranty	2 years

Beam: VL6000 Beam

Designed specifically as the market-leading mid-air effects fixture, the Philips Vari-Lite VL6000 Beam sets a new standard in its class.

A large 14inch (356mm) front aperture – using a new exclusive Philips ellipsoid reflector array system – produces a retro style searchlight effect, with a high output tight collimated shaft of light at 6.4°, which exceeds 55,000 lumens.

Its lightweight robust construction and stylish compact design, allows the fixture to transport and install easily, while its visual effects and weather guarded design - for limited protection from rain - offer something versatile and truly spectacular for arena applications.

The exclusive cloaked transition generator system can be used to create auto-timed fades between color combo to reduce programing time in transitioning colors.



Product specification

Light source	CRI	Color temp	Wattage	Beam	Housing	IP rating	Overall dimensions L x W x H	Weight	Order Code
PGJX50	>80	26300K	1500W	6.4°	Black	IP22	660 x 605 x 600mm	28kg	20.9708.0001

Accessories

	Order Code
Luminaire programing kit	PEGASUS

Features

- Produce a high output tight collimated shaft of light at 6.4° which exceeds 55,000 lumens.
- 3 way color wheel system allows the VL6000 Beam to maintain its highest output at all times and gives the operator 18 direct slots to choose from as well as color mixing to achieve up to 55 full color combinations.
- Exclusive cloaked transition generator system can create auto-timed fades between color combo reducing programing time in transitioning colors.
- Cloud search mode for DMX free operational use.
- Includes 1500W short Arc lamp.
- Two year limited warranty.

Suggested uses:



For more information visit philips.com/vari-lite

Spots

	VL440 Spot	SL LEDSPOT 300	VL2500 Spot	VL770 Spot	VL3015 Spot	VL3515 Spot
						
Source	MSR Gold	LED	MSR Short Arc	MSR Gold	MSR Short Arc	MSR Short Arc
Lamp cap	PGJX50	N/A	GY9.5	Mini FastFit	SFc10-4	SFc10-4
Wattage	400W	270W engine 420W total power	700W	700W	1500W	1500W
Lumen output (max.)	9000	11,500 standard mode 9,200 studio mode	14,500	15,100	27,000 peak field reflector	27,000 peak field reflector
Color temperature	6000K	6500K	5600K	6000K	6000K	6000K
CRI	>75	>65	>80	>75	>80	>80
Beam angle	15-36°	10-45°	18.5-42°, 14-55.5°	15-36°	10-60°	10-60°
Pan / tilt	540° / 260°	540° / 255°	540° / 270°	540° / 260°	540° / 270°	540° / 270°
Controls	DMX512-A	DMX512-A / RDM, Art-Net™	DMX512-A	DMX512-A	DMX512-A	DMX512-A
DMX channels	30	59	22	30	28	31
Color system	CMY, 8 + open fixed	CMY, CTO 5 + open fixed color wheel	CMY, 11 + open fixed	CMY, 8 + open fixed	CMY, 6 + open fixed + variable CTO	CMY, 6 + open fixed + variable CTO
Gobo / effects	7+open rotating / 10+10 fixed	9+open fixed, 6+open rotating / index	5 + open rotating	7 + open rotating	2 x 6 + open rotating 1 x 5 + open rotating	1 x 5 + open rotating 1 x 6 + open fixed
Independent rotating prism	3 facet round	3 facet round	No	3 facet round	No	No
Independent frost	Variable	Yes	No	Variable	No	No
Dimmer / strobe	Mechanical glass wheel / independent strobe dual strobe blades	Electronic 16-bit	Mechanical glass wheel / independent strobe dual strobe blades	Mechanical glass wheel / independent strobe dual strobe blades	Mechanical glass wheel / independent strobe dual strobe blades	Mechanical glass wheel / independent strobe dual strobe blades
Framing shutters / beam shaping	N/A	Yes	No	N/A	No	Yes
Iris	Yes	Yes	Yes	Yes	Yes	No
Color calibration	N/A	N/A	N/A	N/A	N/A	N/A
Accessories	Wireless solutions wireless DMX receiver. Lumen Radio wireless DMX receiver. City Theatrical wireless DMX receiver.	-	N/A	Wireless solutions wireless DMX receiver. Lumen Radio wireless DMX receiver. City Theatrical wireless DMX receiver.	-	-
Operating voltage	100-240VAC 50/60Hz	100-240VAC 50/60Hz	90-264VAC 50/60Hz	100-240VAC 50/60Hz	200-264VAC 50/60Hz	200-264VAC 50/60Hz
IP rating	IP20	IP20	IP20	IP20	IP20	IP20
Operating temperature	-29-50°C	45°C	-29-50°C	-29-50°C	-29-40°C	-29-40°C
Construction	Metal frame, engineering plastic covers	Metal frame, engineering plastic covers	Metal frame, engineering plastic covers	Metal frame, engineering plastic covers	Metal frame, engineering plastic covers	Metal frame, engineering plastic covers
Finish	Black White	Black	Black	Black White	Black	Black
Dimensions H x W x L	480 x 616 x 565mm	443 x 441 x 666mm	478 x 660 x 479mm	480 x 616 x 565mm	828 x 508 x 610mm	828 x 508 x 610mm
Hanging centers	585mm	600mm	483mm	585mm	660mm	660mm
Weight	25kg	28kg	27kg	25kg	43kg	43kg
Warranty	2 years	2 years	2 years	2 years	2 years	2 years

	VL4000 Spot	VL3015LT Spot	VLZ Spot	VLZ Profile	VL1100 Tungsten ERS and D ERS	VL1100 Arc ERS
						
	MSR Gold	MSR Short Arc	LED	LED	Tungsten halogen	MSR
	PGJX50	SF10-4	N/A	N/A	G22	G22
	1200W	1500W	620W	620W	1000W	575W
	33,000 standard mode 25,000 studio mode	41,400	25,000	24,000	10,000 (ERS) 10,000 (D ERS)	15,000
	6000K	6000K	8000K source Variable CTO	8000K source Variable CTO	3200K	5900K
	>75	>80	>70	>70	>90	>90
	9-47°	6-60°	7-50°	8-50°	19-36-70°	19-36-70°
	540° / 270°	540° / 270°	540° / 270°	540° / 270°	540° / 270°	540° / 270°
	DMX512-A / RDM	DMX512-A	DMX512-A / RDM, Art-Net™	DMX512-A / RDM, Art-Net™	DMX512-A	DMX512-A
	57 / 52	36	42	61	26+1 (ERS) 27 (D ERS)	27
	CMY, variable CTO, 2 fixed color wheels 5 + open	CMY, variable CTO, 2 x 5 + open fixed color wheels	CMY, Variable CTO 2 x fixed color wheels 6 + open	CMY, Variable CTO 1 x fixed color wheels 6 + open	CMY	CMY
	2 wheel (interchangeable) 6 + open rotatable 2 x independent animation wheels	3 x 4 + open rotating (interchangeable)	2 x rotating / indexing wheel 7+ open	1 x rotating / indexing wheel 7+ open, 1 x fixed gobo wheel 7 + open	1 x 5 + open rotating interchangeable	1 x 5 + open rotating interchangeable
	3 facet round	Yes	3 facet round	2 facet round	No	No
	Yes	Yes	3 way frost system	4 way frost system	Variable	Variable
	Mechanical glass wheel / independent strobe dual strobe blades	Mechanical glass wheel / independent strobe dual strobe blades	Electronic 16-bit	Electronic 16-bit	N/A (ERS) On-board IGBT dimmer / no strobe (D ERS)	Mechanical glass wheel / no strobe
	Yes	No	No	No	Yes (S versions)	Yes (S versions)
	Yes	Yes	Yes	Yes	Yes (I version)	Yes (I version)
	N/A	N/A	N/A	N/A	N/A	N/A
	-	Followspot handle	-	-	-	-
	200-240VAC 50/60Hz	200-264VAC 50/60Hz	100-240VAC 50/60Hz	100-240VAC 50/60Hz	200-240VAC 50/60Hz	100-240VAC 50/60Hz
	IP20	IP20	IP20	IP20	IP20	IP20
	-29-40°C standard mode -29-50°C studio mode	-29-40°C	-10-45°C	-10-45°C	-29-50°C	-29-50°C
	Metal frame, engineering plastic covers	Metal frame, engineering plastic covers	Metal frame, engineering plastic covers	Metal frame, engineering plastic covers	Metal frame, engineering plastic covers	Metal frame / engineering plastic covers
	Black	Black	Black	Black	Black	Black
	625 x 571 x 808mm	552 x 1034 x 774mm	458 x 316 x 809mm	458 x 316 x 796mm	445 x 876 x 660mm	445 x 876 x 660mm
	635mm	788mm	600mm	600mm	635mm	635mm
	40.9kg	52.3kg	44.0kg	42.4kg	32kg (ERS) 32.65kg (D ERS)	32kg (7.2kg ballast hangs separate)
	2 years	2 years	2years	2 years	2 years	2 years

Spots: VL440 Spot

The Philips Vari-Lite VL440 Spot provides brilliant color mixing through a three-wheel CMY color assembly, and also has one gobo wheel with seven rotatable and indexable positions, a second gobo wheel with ten fixed positions, powerful pan and tilt motors that provide smooth, fast time-controlled continuous motion capable of 0.3° resolution with a pan range of 540° and tilt of 260°, a zoom range from 15° to 36°, a mechanical iris for continuous beam size control, and built in mounting points on the front of the luminaire provide for easy attachment of after-market accessories such as top hats.

The VL440 Spot uses a 400W MSR Gold 400 Philips MinifastFit lamp to produce 9000 lumens of output. The luminaire is complete with eight standard colors on a fixed wheel, a coated glass dimmer wheel, a separate dual-blade strobe system, an independent armature with frost glass, and a second, independent armature with a rotating and indexable prism. The frost and prism glass are interchangeable.



Product specification

Light source	CRI	Color temp	Wattage	Beam	Dimming	Housing	IP rating	Overall dimensions L x W x H	Weight	Order Code
MSR Gold 400 MinifastFit	>75	6000K	400W	15-36°	DMX512-A	Black	IP20	480 x 616 x 565mm	25kg	20.9687.0002
MSR Gold 400 MinifastFit	>75	6000K	400W	15-36°	DMX512-A	White	IP20	480 x 616 x 565mm	25kg	20.9687.0002.02

Accessories

	Order Code
Wireless solutions wireless DMX receiver	28.9687.0100
Lumen Radio wireless DMX receiver	28.9687.0101
City Theatrical wireless DMX receiver	28.9687.0102
USB luminaire programming kit	28.8500.0054

Features

- 400W MSR Gold 400 MinifastFit lamp.
- 9,000 lumens
- Zoom from 15-36°.
- CMY color mixing.
- Fixed color wheel; 8 interchangeable dichroic filters.
- Rotating gobo wheel; seven indexable rotating positions; interchangeable gobos.
- Fixed gobo wheel; 10 gobo positions; interchangeable gobos.
- Independent, drop-in armature with frost glass.
- Independent, drop-in armature with rotating and indexable five facet prism.
- Independent dual strobe blades.
- Mechanical iris for beam size control.
- Coated glass dimmer wheel and separate, dual-blade strobe system.
- Two year limited warranty.

Suggested uses:



For more information visit philips.com/vari-lite

Spots: SL LEDSPOT 300

The Showline SL LEDSPOT 300 is a compact high performance moving head luminaire delivering a powerful output with fast and quiet movement. The precision framing system is a unique feature for a small compact luminaire, making the SL LEDSPOT 300 an ideal solution for designers with challenging space requirements, desiring total beam control.

The large zoom angle range, precision indexing four framing shutter system, frost flag and iris enable full beam control. Shape, size, and soften the beam as required and heighten the impact of your designs.

With six rotating/indexable and nine fixed gobos from the Vari-Lite Image Library and a rotating/indexable circular prism, the SL LEDSPOT 300 is ideal for creating dynamic and arresting visual effects.



Product specification

Light source	CRI	Color temp	Wattage	Beam	Dimming	Housing	IP rating	Overall dimensions L x W x H	Weight	Order Code
LED	>65	6500K	270W engine 420W total power	10-45°	DMX512-A / RDM Art-Net™	Black	IP20	443 x 441 x 666mm	28kg	26-095-01115-00

Features

- 11,000 lumens.
- 4 : 1 zoom.
- CMY color mixing.
- CTO.
- Framing and iris system in a compact fixture.
- 7 + open fixed color wheel.
- 6 + interchangeable rotating / index gobo wheel.
- 9 + open interchangeable fixed gobo.
- 3 facet prism.
- Iris.
- Framing system.
- Two year limited warranty.

Suggested uses:



For more information visit philips.com/showline

Spots: VL2500 Spot

The Philips Vari-Lite VL2500 Spot includes a five-position rotating gobo wheel and an 11-position fixed gobo wheel along with CMY color mixing, a coated glass dimmer wheel and a separate dual-blade strobe system that provides a smooth, super-fast strobe. Combined with an 11-slot fixed color wheel, the color options are practically limitless. The VL2500 Spot's pan and tilt motors are powerful and provide great torque while the beam size iris operates quietly.

The VL2500 Spot packs all these features into a small package while also including clear optics, exceptional zoom range, fast, smooth movement and powerful output, all at a most reasonable price.



Product specification

Light source	CRI	Color temp	Wattage	Beam	Dimming	Housing	IP rating	Overall dimensions H x W x L	Weight	Order Code
MSR Short Arc	>80	5600K	700W	18.5-42°	DMX512-A	Black	IP20	478 x 660 x 479mm	27kg	20.9676.0001

Accessories

	Order Code
USB luminaire programing kit	28.8500.0054

Features

- 700W MSR Short Arc lamp.
- 14,500 lumens.
- Zoom from 18.5-42°.
- CMY color mixing system.
- 5 position plus open rotating and indexing gobo wheel.
- 11 position plus open fixed gobo wheel.
- 11 position plus open fixed color wheel.
- Mechanical Iris for beam size control.
- Separate dual-blade strobe system.
- Coated glass dimmer wheel.
- Two year limited warranty.

Suggested uses:



For more information visit philips.com/vari-lite

Spots: VL770 Spot

The Philips Vari-Lite VL770 Spot luminaire provides brilliant color mixing through a three-wheel CMY color assembly, and also have one gobo wheel with seven rotatable and indexable positions, a second gobo wheel with ten fixed positions, powerful pan and tilt motors that provide smooth, fast time-controlled continuous motion capable of 0.3° resolution with a pan range of 540° and tilt of 260°, a zoom range from 15° to 36°, a mechanical iris for continuous beam size control, and built in mounting points on the front of the luminaire provide for easy attachment of after-market accessories such as top hats.

The VL770 Spot uses an industry-standard 700W MSR Gold Philips MiniFastFit lamp to produce an impressive output of 15,100 lumens. Each luminaire is complete with eight standard colors on a fixed wheel, a coated glass dimmer wheel, a separate dual-blade strobe system, an independent armature with frost glass, and a second, independent armature with a rotating and indexable prism. In all the fixtures the frost and prism glass are interchangeable.



Product specification

Light source	CRI	Color temp	Wattage	Beam	Dimming	Housing	IP rating	Overall dimensions H x W x L	Weight	Order Code
MSR Gold 700 MiniFastFit	>75	6000K	700W	15-36°	DMX512-A	Black	IP20	480 x 616 x 565mm	25kg	20.9687.0003
MSR Gold 700 MiniFastFit	>75	6000K	700W	15-36°	DMX512-A	White	IP20	480 x 616 x 565mm	25kg	20.9687.0003.02

Accessories

	Order Code
Wireless solutions wireless DMX receiver	28.9687.0100
Lumen Radio wireless DMX receiver	28.9687.0101
City Theatrical wireless DMX receiver	28.9687.0102
USB luminaire programming kit	28.8500.0054

Features

- 700W MSR Gold 700 MinifastFit lamp.
- 15,100 lumens
- Zoom from 15-36°.
- CMY color mixing.
- Fixed color wheel; 8 interchangeable dichroic filters.
- Rotating gobo wheel; seven indexable rotating positions; interchangeable gobos.
- Fixed gobo wheel; 10 gobo positions; interchangeable gobos.
- Independent, drop-in armature with frost glass.
- Independent, drop-in armature with rotating and indexable five facet prism.
- Mechanical Iris for beam size control.
- Coated glass dimmer wheel and separate, dual-blade strobe system.
- Two year limited warranty.

Suggested uses:



For more information visit philips.com/vari-lite

Spots: VL3015 Spot

The Philips Vari-Lite VL3015 Spot Luminaire provides the increased output of a 1500W lamp in a luminaire that offers the same famous features as the 1200W VL3000 Spot. Standard dual reflectors allow users to choose either a peaked or flat field beam.

The VL3015 Spot features 6:1 zoom optics, CMY color mixing, variable CTO color temperature correction, a six-position color wheel, three gobo/effects wheels, a beam-size iris and separate dimmer and ultra-fast strobe mechanisms. A standard palette of gobos, effects and colors is provided with the unit. Custom gobos, effects and colors are available.

It also allows users to operate its single lamp at three different wattages via either a control channel setting or a lamp menu option. With only a setting adjustment, the fixture will run its short arc lamp at 900W, 1200W or 1650W without any detrimental effects on the lamp.



Product specification

Light source	CRI	Color temp	Wattage	Beam	Dimming	Housing	IP rating	Overall dimensions H x W x L	Weight	Order Code
MSR Short Arc	>80	6000K	1500W	10-60°	DMX512-A	Black	IP20	828 x 508 x 610mm	43kg	20.9676.0001

Features

- 1500W MSR Short Arc lamp.
- 27,000 lumens peak filed reflector.
- 6:1 zoom range 10 to 60°.
- Peak or flat field refractor user changeable.
- CMY color mixing.
- Variable CTO.
- 6 + open Interchangeable fixed colors.
- Iris.
- 3 rotating gobo wheels 2 x 6 + open rotating 1 x 5 + open rotating.
- Two year limited warranty.

Suggested uses:



For more information visit philips.com/vari-lite

Spots: VL3515 Spot

Using a 1500W double-ended short arc lamp, the Philips Vari-Lite VL3515 Spot also features 6:1 zoom optics, CMY color mixing, variable CTO color temperature correction, a six-position color wheel, two gobo/effects wheels, a shutter and separate dimmer, and ultra-fast strobe mechanisms.

The VL3515 Spot has an added feature of a four-blade shutter mechanism that allows the blades to be operated independently or in unison on two planes for a clear and crisp image.

Two reflectors are standard on the luminaire allowing users to choose between either a peaked or flat-field beam. In the peaked beam, the fixture provides 27,000 lumens of output, and in the flat field beam, an output of 22,000 lumens is achieved. Reflectors are easily changed, and whichever one is not chosen rides securely inside the luminaire on a specially designed mount.

The VL3515 Spot is complete with a palette of Vari-Lite gobos, effects and colors, while custom gobos, effects and colors are also available. Additionally, the fixture is similarly sized in comparison to all other Series 3000 products providing a consistent hang configuration and appearance, no matter which luminaire is required.

The VL3515 Spot allows users to operate its single lamp at three different wattages via either a control channel setting or a lamp menu option. With only a setting adjustment, the fixture will run its short arc lamp at 900W, 1200W or 1650W without any detrimental effects on the lamp.



Product specification

Light source	CRI	Color temp	Wattage	Beam	Dimming	Housing	IP rating	Overall dimensions H x W x L	Weight	Order Code
MSR Short Arc	>80	6000K	1500W	10-60°	DMX512-A	Black	IP20	828 x 508 x 610mm	43kg	20.9679.0002

Features

- 1500W MSR Short Arc lamp.
- 27,000 lumens peak field reflector, 22000 flat field refactor.
- 6:1 zoom range 10 to 60°.
- Peak or flat field refactor user changeable.
- CMY color mixing.
- Variable CTO.
- 6 + open Interchangeable fixed colors.
- Framing system .
- 3 rotating gobo wheels 2 x 6 + open rotating 1 x 5 + open rotating.
- Two year limited warranty.

Suggested uses:



For more information visit philips.com/vari-lite

Spots: VL4000 Spot

Every aspect of the Philips Vari-Lite VL4000 Spot luminaire has been designed with performance in mind using a Philips 1200W lamp to produce 33,000 lumens in standard mode (25,000 studio mode) and high resolution optics to ensure remarkable center-to-edge focusing, with a 5:1 zoom that covers an amazing 9 to 47 degrees without sacrificing output or clarity.

The VL4000 Spot also features dual rotating gobo wheels, dual animation wheels, the chromatically tuned Dichro*Fusion effect, a four-blade shutter system and mechanical iris. But if that wasn't enough, an independent prism with divergence control and variable frost are also implemented into the luminaire.



Product specification

Light source	CRI	Color temp	Wattage	Beam	Dimming	Housing	IP rating	Overall dimensions H x W x L	Weight	Order Code
MSR Gold FastFit	>75	6000K	1200W	9-47°	DMX512-A / RDM	Black	IP20	625 x 571 x 808mm	40.9kg	20.9704.0001

Features

- 1200W Philips MSR Gold FastFit lamp.
- Infinity CMY cross fading system.
- 2 fixed color wheels; five positions each.
- Variable CTO color temperature correction.
- Two gobo wheels; seven rotatable, indexable positions plus open.
- Dual coated glass dimmer flags.
- Dual blade strobe system.
- Beam size iris.
- 33,000 lumens (standard mode).
- 25,000 lumens (studio mode).
- Two animation wheels; rotating indexable patterns with variable motion control.
- Zoom range from 9° to 47°.
- 5:1 zoom optics system.
- 3 facet prism with divergence control.
- Variable frost.
- 4 frame blade system with individually indexable frames and simultaneous focus on all blades.
- Two year limited warranty.

Suggested uses:



For more information visit philips.com/vari-lite

Spots: VL3015LT Spot

The Philips Vari-Lite VL3015LT Spot provides unprecedented output from a 1500W lamp in a luminaire that offers an incredible zoom range optimized for long throw applications along with a vast array of powerful features.

Using a 1500W double-ended short arc lamp to produce 41,400 lumens of output, the VL3015LT Spot features 10:1 zoom optics, CMY color mixing, variable CTO wheel, two five-position color wheels, three gobo/effects wheels, a beam size iris, and separate dimmer and ultra-fast strobe mechanisms. A standard palette of gobos, effects and colors is provided with the unit. Custom gobos, effects, and colors are also available.

Additionally, the light contains an independent rotating and indexing 3-facet prism as well as an independent frost glass. The zoom range of 6° to 60° allows for use in a multitude of applications from stadiums to theaters.

The VL3015LT Spot allows users to operate its single lamp at three different wattages via either a control channel setting or a lamp menu option. With only a setting adjustment, the fixture will run its short arc lamp at 900W, 1200W or 1650W without any detrimental effects on the lamp.



Product specification

Light source	CRI	Color temp	Wattage	Beam	Dimming	Housing	IP rating	Overall dimensions H x W x L	Weight	Order Code
MSR Short Arc	>80	6000K	1500W	6-60°	DMX512-A	Black	IP20	552 x 1034 x 774mm	52.3kg	20.9698.0001

Features

- 1500W MSR Short Arc lamp.
- 41,400 lumen output.
- Designed for long throw applications 10:1 zoom range 6 to 60 degree zoom range.
- CMY color mixing system with variable CTO.
- 5 fixed color wheel 5 + open.
- Independent 3 facet rotating prism.
- Separate frost flag.
- 2 color wheels 5 + open color on each wheel continuous spin mode.
- Iris.
- Follow spot mode and handle accessory.
- Two year limited warranty.

Suggested uses:



For more information visit philips.com/vari-lite

Spots: VLZ Spot

The Philips Vari-Lite VLZ Spot is a dedicated spot luminaire utilizing the latest high output white LED sources to produce a staggering 25,000 lumens projected from a 180mm (7") front lens.

The familiar CMY-CTO color system creates stunning, seamless mixed colors. The dual fixed color wheel with linear control gives access to Vari-Lite colors and split color combinations. Color shake and color wheel spin control have also been added to the mix.

Dual rotating and indexable gobo wheels produce stunning mid-air and break up effects. The high contrast flat field wide zoom range and iris will cover beam control from the narrowest shafts of light to a hard focused wide projection. Multiple beam effects can be produced using the 3 faceted linear prism. Hard to soft edge focusing is attained via the 16-bit focus control channel, and focus zoom tracking can be selected remotely via a console. The beam softness can be adjusted via the 3 way frost control.

The combination of the color and beam control makes the VLZ Spot the go-to professional moving spot luminaire.

NEW!



Product specification

Light source	CRI	Color temp	Wattage	Beam	Dimming	Housing	IP rating	Overall dimensions H x W x L	Weight	Order Code
LED	>70	8000K source Variable CTO	620W	7-50°	DMX512-A / RDM	Black	IP20	458 x 316 x 809mm	44.0kg	26-105-0001-00

Features

- 25,000 lumens.
- 7-50° zoom.
- Large visual impact 180mm (7") front lens.
- High output White Light LED light source engine to maintain constant high output light levels.
- Wide zoom range.
- 16-bit dimmer control with 4 sectable curves.
- Color mixing system CMY + CTO color control.
- 12 fixed color - 2 color wheels 6 + open with color shake and wheel spin functions.
- 2 fully rotating and indexing gobo wheel loaded interchangeable mid-effect and breakup gobos.
- 3 frost for beam softening.
- 3 facet prism.
- Iris for beam size reduction.
- Fast, accurate and repeatable movement on all functions.
- Two year limited warranty.

Suggested uses:



For more information visit philips.com/vari-lite

Spots: VLZ Profile

The Philips Vari-Lite VLZ Profile is a dedicated profile luminaire utilizing the latest high output white LED sources to produce a staggering 24,000 lumens projected from a 180mm front lens.

The familiar CMY-CTO color system creates stunning, seamless mixed colors. The dual fixed color wheel with linear control gives access to Vari-Lite colors and split color combinations. Color shake and color wheel spin control have also been added to the mix.

Both mid-air and high quality projection of images is achieved by the 2 gobo wheels loaded with Vari-Lite exclusive gobo patterns. An additional continuously indexing or rotatable animation wheel further enhances the projected effect.

Fitted with both an iris and a 4-blade framing system, giving the operator full beam-shaping control.

Hard to soft edge focusing is achieved via the 16-bit focus control channel and focus zoom. racking can be selected remotely via the lighting console.

The beam softness can be controlled via the 3-way frost control.

The combination of the color and beam control will make this the go-to professional moving profile luminaire



Product specification

Light source	CRI	Color temp	Wattage	Beam	Dimming	Housing	IP rating	Overall dimensions H x W x L	Weight	Order Code
LED	>70	8000K source Variable CTO	620W	8-50°	DMX512-A / RDM	Black	IP20	458 x 316 x 796mm	42.4kg	26-105-0002-00

Features

- 24,000 lumens.
- 8-50° zoom.
- High quality image projection via 140mm (5 1/2") front lens.
- High output white light LED light source engine to maintain constant high output light levels.
- Wide zoom range.
- 16-bit dimmer control with 4 sectable curves.
- Color mixing system CMY + CTO color control.
- 6 fixed color - 1 color wheels 6 + open with color shake and wheel spin functions.
- 1 fully rotating and indexing gobo wheel 7 + open.
- 1 fixed rotating gobo wheel 7 + open loaded with interchangeable glass mid-air effect and breakup gobos.
- 3-way frost control.
- 3 facet prism.
- Iris for beam size reduction.
- Fast, accurate and repeatable movement on all functions.
- Animation wheel with continuous indexable /rotation.
- Framing shutter system 4 blade with independent control and frame rotation +/- 50 degree either side of center.
- Two year limited warranty.

Suggested uses:



For more information visit philips.com/vari-lite

Spots: VL1100 Tungsten ERS and D ERS

The Philips Vari-Lite VL1100 luminaires have a 50kHz drive system that quietens the operation of all two-phase motors in the fixtures during movement and while in static positions. They also have three-phase, ultra quiet stepper motors that provide a smooth, timed continuous pan and tilt motion. Additionally, a central bearing system in the gobo wheel reduces noise and ensures smooth operation.

Automated functions include CMY color mixing, rotating gobos, variable diffusion, and a zoom lens that ranges from 19° to 36° for normal imaging and a super zoom function that ranges to 70°.



Product specification

Light source	Version	Color temp	Wattage	Beam	Dimming	Housing	IP rating	Overall dimensions H x W x L	Weight	Order Code
Tungsten halogen	TS	3200K	1000W	19-70°	DMX512-A	Black	IP20	445 x 876 x 660mm	32.0kg	20.9664.0001.02
Tungsten halogen	TS	3200K	1000W	19-70°	DMX512-A	White	IP20	445 x 876 x 660mm	32.0kg	20.9664.0001.02.02
Tungsten halogen	TI	3200K	1000W	19-70°	DMX512-A	Black	IP20	445 x 876 x 660mm	32.0kg	20.9664.0001.03
Tungsten halogen	TI	3200K	1000W	19-70°	DMX512-A	White	IP20	445 x 876 x 660mm	32.0kg	20.9664.0001.03.02
Tungsten halogen	TSD	3200K	1000W	19-70°	DMX512-A	Black	IP20	445 x 876 x 660mm	32.0kg	20.9664.0001.32
Tungsten halogen	TSD	3200K	1000W	19-70°	DMX512-A	White	IP20	445 x 876 x 660mm	32.0kg	20.9664.0001.32.02
Tungsten halogen	TID	3200K	1000W	19-70°	DMX512-A	Black	IP20	445 x 876 x 660mm	32.0kg	20.9664.0001.33
Tungsten halogen	TID	3200K	1000W	19-70°	DMX512-A	White	IP20	445 x 876 x 660mm	32.0kg	20.9664.0001.33.02

Accessories

	Order Code
USB luminaire programming kit	28.8500.0054

Features

- 1000W tungsten lamp.
- 10,000 lumens.
- Excellent imaging projection 19-36°.
- Wide zoom range continuously variable field angle in imaging range from 19° to 36°, super zoom angles to 70°.
- Super zoom function 36-70°.
- Excellent imaging projection 19-36°.
- Near silent operation.
- CMY color mixing system.
- Rotating gobo wheel 5 + open (gobo sold separately).
- Framing shutter (S version) four blade system can frame and crop beam field and gobos. Each individual shutter is capable of translating to beam center while also rotating ±35°. Entire shutter rotates ±45°.
- Beam size control iris (I version) In addition to the zoom optics, a mechanical iris provides continuous beam size control for both rapid changes and smooth timed beam angle changes.
- Convection cooled lamp housing for quiet operation.
- Integrated IGBT dimmer on VL1100 Tungsten D ERS version.
- Two year limited warranty.

Suggested uses:



For more information visit philips.com/vari-lite

Spots: VL1100 Arc ERS

The Philips Vari-Lite VL1100 Arc ERS combines the advantages of an ellipsoidal reflector spotlight with the versatility of an automated luminaire.

Coupled with cool color tones, brightness and intensity, the versatility of the VL1100 Arc ERS is further enhanced with either the mechanical iris or 4-blade shutter system. The VL1100 Arc ERS has a 50kHz drive system that quiets the operation of all two-phase motors in the fixtures during movement and while in static positions. Three-phase, ultra quiet stepper motors provide for smooth, timed continuous pan and tilt motion. Additionally, a central bearing system in the gobo wheel reduces noise and ensures smooth operation.

When the production calls for cool color tones and bright, intense light, designers turn to the VL1100 Arc ERS. The VL1100 Arc ERS luminaire's quiet operation and affordable price make it ideal for budget-conscious productions.



Product specification

Light source	Version	Color temp	Wattage	Beam	Dimming	Housing	IP rating	Overall dimensions H x W x L	Weight	Order Code
MSR	AS	5900K	575W	19-36-70°	DMX512-A	Black	IP20	445 x 876 x 660mm	32.0kg	20.9664.0001.12
MSR	AS	5900K	575W	19-36-70°	DMX512-A	White	IP20	445 x 876 x 660mm	32.0kg	20.9664.0001.12.02
MSR	AI	5900K	575W	19-36-70°	DMX512-A	Black	IP20	445 x 876 x 660mm	32.0kg	20.9664.0001.13
MSR	AI	5900K	575W	19-36-70°	DMX512-A	White	IP20	445 x 876 x 660mm	32.0kg	20.9664.0001.13.02

Accessories

	Order Code
USB luminaire programming kit	28.8500.0054

Features

- 575W arc lamp.
- More than 15,000 lumens.
- Near silent operation.
- Separate ballast can be mounted remotely from fixture.
- Arc lamp gives extended life over tungsten version.
- Wide zoom range continuously variable field angle in imaging range from 19-36°, super zoom angles to 70°.
- CMY color mixing system.
- Rotating gobo wheel 5 + open (gobo sold separately).
- Framing shutter (S version) four blade system can frame and crop beam field and gobos. Each individual shutter is capable of translating to beam centre while also rotating $\pm 35^\circ$. Entire shutter rotates $\pm 45^\circ$.
- Beam size control iris (I version).
- In addition to the zoom optics, a mechanical iris provides continuous beam size control for both rapid changes and smooth timed beam angle changes.
- Convection cooled lamp housing for quiet operation.
- Two year limited warranty.

Suggested uses:



For more information visit philips.com/vari-lite



VL4000 series **exceeds all expectations** on Rush R40 Live tour

With more than 40 million records sold worldwide, the Rock and Roll Hall of Fame inductee trio of Rush first hit the music scene in the early 1970s and is one of the most iconic rock bands today. Longtime tour lighting designer Howard Ungerleider of Production Design International Toronto, was once again charged with creating the lighting spectacle that would be seen by the multitude of sold-out houses.



After a collaborative process with the production team, Ungerleider turned to Solotech to provide him with the innovative lighting technology to best accentuate the R40 Live tour which included VL4000 BeamWash, VL4000 Spot, VL3500 Wash FX and VL3500 Spot luminaires from Philips Vari-Lite. “Our designs always begin with a full production team collaboration and brainstorming session,” began Ungerleider. “For this particular tour, an evolution concept was conceived about going back in time and deconstructing Rush from their earliest beginnings to present day. With our concept in mind we then turned to Solotech to be our tour provider for lighting and video along with their sister-company 4U2C. Once the backbone was all in play, I started putting my lighting design in place which would be filled primarily by VL4000 Spot and VL4000 BeamWash luminaires.” Having worked with Rush for over 40 years through 26 tours, Ungerleider knew exactly the type of design that both the band and their passionate fans would want to see. So as he started to look at the automated luminaires to use in the design, he got an intriguing tip that would put in motion the solidification of his Vari-Lite rig. “I really like to use saturated colors in concert lighting and because of this my programmer Tim Grivas told me I needed to take a look at the VL4000 series of fixtures,” explained Ungerleider. “When I got to see the VL4000 BeamWash and VL4000 Spot, my decision became a no-brainer. These fixtures are truly fantastic because they are multi-faceted and I love their saturated color.”

“I think the most attractive attribute of the VL 4000 series fixtures is a combination of their power and color,” concluded Ungerleider. “The color coming out of the VL4000 BeamWash and VL4000 Spot is superior to anything that’s been released in the last decade, and their sheer power is amazing. The crispness of their beams is refreshing and lighting designers should give them a look because it’s a new paradigm for Philips Vari-Lite to release fixtures of this nature. This tour was pretty much an all Vari-Lite rig and these lights exceeded all my expectations.”

Washes

	SL BEAM 100	SL BEAM 300fx	SL BEAM 500fx
		 NEW!	 NEW!
Source	LED	RGBW LED	RGBW LED
Qty of LED cells	7	19	37
Lamp cap	–	–	–
Lumen output (max.)	1500	4500	15,500
Wattage	150W	350W	1200W
Color temperature	2800-5800K	2800-5800K	2700-5800K
CRI	>90	>90	>90
Color mixing	RGBW	RGBW	RGBW
Beam angle	5-45°	4-40°	5-36°
Pan / tilt	540° / 230°	540° / 230°	540° / 220°
Controls	DMX512-A / RDM, master / slave	DMX512-A / RDM, Art-Net™, master / slave	DMX512-A / RDM, Art-Net™, master / slave
Pixel / zone control	3	Pixel control	Pixel control
DMX modes	HSIC, simple 8-bit RGBW, 8-bit RGBW, 16-bit RGBW	HSIC, simple 8-bit RGBW, 8-bit RGBW, 16-bit RGBW, pattern	HSIC, simple 8-bit RGBW, 8-bit RGBW, 16-bit RGBW, pattern
Dimming	Electronic 8 and 16-bit	Electronic 8 and 16-bit	Electronic 8 and 16-bit
Macro effects	Pre-set filter colors, color chases, strobe and duration control	Pre-set filter colors, color chases, strobe and duration control	Pre-set filter colors, color chases, strobe and duration control
Accessories	–	–	–
Operating voltage	100-240VAC	100-240VAC	100-240VAC
IP rating	IP21	IP20	IP20
Operating temperature	-29-40°C	-29-40°C	-20-40°C
Construction	Metal frame and engineering plastic covers	Metal frame and engineering plastic covers	Metal frame and engineering plastic covers
Finish	Black	Black	Black
Dimensions L x H x W	397 x 229 x 210mm	335x 480 x 290mm	475 x 605 x 396mm
Hanging centers	230mm	500mm	620mm
Weight	7.6kg	14.5kg	29.0kg
Warranty	2 years	2 years	2 years

	VL550 Tungsten / VL550D Tungsten	VL2500 Wash	VLZ Wash	VL3500 Wash
				
	Tungsten	MSR	LED	MSR
	1200W 120V 1000W 230V	N/A	N/A	N/A
	–	–	–	SFc10-4
	6010	14,700	25,000	>70,000
	1200W	700W	620W	1500W
	3200K	5600K	8000K source Variable CTO	6000K
	>90	>80	>70	>80
	Dicho*Tune	CMY 1 + open fixed colors	CMY, variable CTO 2x fixed color wheels	CMY, 2 5 + open fixed color wheels, variable CTO
	6-24° lamp and lens dependent	14-55°	78-50°	24-50° 9.5° zoom by pass
	540° / 270°	540° / 270°	540° / 270°	540° / 270°
	DMX512-A	DMX512-A	DMX512-A / RDM, Art-Net™	DMX512-A
	N/A	N/A	52	N/A
	8 channel, 13 channel	1	1	1
	External or (D) intergrated IGBGT dimmer	Mechanical glass wheel / dual independent strobe blades	Electronic 16-bit	Mechanical glass wheel / dual independent strobe blades
	No	No	No	No
	Clear lens (VNSP) Stipple lens (NSP) standard with fixture 8 row lenticular lens (MFL) 10 row lenticular lens (MFL) 12 row lenticular lens (WFL) Buxom lens (VWFL)	–	–	ULTRA clear front lens Stipple front lens Fresnel front lens
	100-240VAC, 50/60Hz	200-264V, 50/60Hz	100-240VAC 50/60Hz	200-264V, 50/60Hz
	IP20	IP20	IP20	IP20
	-29-40°C	-29-40°C	10-45°C	-29-40°C
	Metal frame and engineering plastic covers	Metal frame and engineering plastic covers	Metal frame and engineering plastic covers	Metal frame and engineering plastic covers
	Black White (to special order)	Black	Black	Black
	421 x 454 x 431mm	701 x 477 x 490mm	458 x 316 x 796mm	508 x 838 x 686mm
	482mm	483mm	600mm	711mm
	19.5kg	26.1kg	39.0kg	44.0kg
	2 years	2 years	2 years	2 years

Washes: SL BEAM 100

The Showline SL BEAM 100 utilizes the Harmonize Color Calibration system. This revolutionary process ensures color matching not only between luminaires, but also between individual pixels of each and every luminaire. Armed with 3 zone control for visual effects, seamless color changes, powerful output, a useful zoom range and creative programming possibilities.



Product specification

Light source	CRI	Color temp	Wattage	Beam	Dimming	Housing	IP rating	Overall dimensions L x W x H	Weight	Order Code
LED	>90	2800-5800K	150W	5-45°	Electronic 8 and 16-bit	Black	IP21	397 x 229 x 210mm	7.6kg	88-095-5592-36

Features

- Zoom range of 5-45°.
- Delivers over 1500 lumens of output.
- Up to 3 zones of individual LED control for visual effects.
- Simple user interface.
- Configure remotely via RDM, or locally through the comprehensive Showline LCD menu system.
- DMX512-A control via 5 pin XLRs.
- Built-in color pre-sets, chases and special effects.
- 8 or 16 bit smooth stepless fades.
- Remote configuration available via RDM.
- Extremely compact design.
- Two year limited warranty.

Suggested uses:



For more information visit philips.com/showline

Washes: SL BEAM 300fx

The Showline SL BEAM 300fx is a high performance moving head luminaire with a difference, that is bright, fast and quiet. The 19 RGBW LEDs deliver exceptional output, and the versatile and effective precision optical design allows the SL BEAM 300fx to function both as a beam as well as a wash luminaire.



Product specification

Light source	CRI	Color temp	Wattage	Beam	Dimming	Housing	IP rating	Overall dimensions L x W x H	Weight	Order Code
RGBW LED	>90	Variable	350W	4-40°	Electronic 8 and 16-bit	Black	IP20	335x 480 x 290mm	14.5kg	88-095-6182-36

Accessories

	Order Code
3 way flight case	24-021-0001-00

Features

- Over 4500 lumens.
- Less than 15kg.
- Delivers 4500 lumens output.
- Crisp tightly collimated beam.
- Powerful blended washes of colour.
- Create entrancing fluid lighting effects with the rotating lens and effects wheel.
- Configure remotely via RDM, or locally through the comprehensive Showline LCD menu system.
- Choice of DMX512-A control via 5-pin XLRs or over Ethernet.
- Pattern mode with 32 dynamic moving animations.
- Harmonize Color Calibration Technology.
- Indexing counter rotating lens and effect wheel.
- Low ambient noise level.
- Fast, accurate movement of all functions including pan/tilt and lenses.
- New effect features.
- Two year limited warranty.

Suggested uses:



For more information visit philips.com/showline

Washes: SL BEAM 500fx

Pumping up the performance of the SL BEAM range, the Showline SL BEAM 500fx is a superb moving-head luminaire that delivers an exceptional output from its 37 RGBW LEDs. Just like its partner in this category, the SL BEAM 500fx is fast and quiet and extremely versatile.

The effective precision optical design allows the SL BEAM 500fx to function as a beam and as a wash luminaire. However, where the luminaire really stands out is through its individual pixel mapping and animation, together with a rotating front lens for multi-beam effects.



Product specification

Light source	CRI	Color temp	Wattage	Beam	Dimming	Housing	IP rating	Overall dimensions L x W x H	Weight	Order Code
LED	>90	Variable	1200W	5-36°	Electronic 8 and 16-bit	Black	IP20	475 x 605 x 396mm	29.0kg	88-095-6902-36

Features

- 15,500 lumens of output.
- Crisp tightly collimated beam.
- Powerful blended washes of color.
- Large aperture front lens with 37 fused optics.
- Create entrancing fluid lighting effects with the rotating lens and effects wheel.
- Configure remotely via RDM, or locally through the comprehensive Showline LCD menu system.
- Choice of DMX512-A control via 5 pin XLRs or over Ethernet.
- Pattern mode with 32 dynamic moving animations
- Two year limited warranty.

Suggested uses:



For more information visit philips.com/showline

Washes: VL550 Wash

The Philips Vari-Lite VL550 Wash features the innovative DICHRO*TUNE radial color mixing system which employs three sets of 16 radially mounted dichroic filters - magenta, blue and amber - designed to produce smooth, full-spectrum color crossfades.

Available with pastel versions of the standard colors, the pastel colors offer a softer, "Broadway-type" color palette often used in live theater.

Designed with convection cooled lamps and internally cooled electronics which utilize on-demand low velocity, low noise micro-fans. The most economical and lightweight version of the luminaire, the VL550 offers the warm 3200K of the tungsten lamp source, along with weight and space efficiency.



Product specification

Light source	Type	CRI	Color temp	Wattage max.	Beam	Dimming	Housing	IP rating	Overall dimensions L x W x H	Weight	Order Code
Tungsten	Standard color dichroic glass	>90	3200K	1200W	6-24° lamp and lens dependent	DMX512-A	Black	IP20	421 x 454 x 431mm	19.5kg	20.9683.0001
Tungsten	Pastel color dichroic glass	>90	3200K	1200W	6-24° lamp and lens dependent	DMX512-A	Black	IP20	421 x 454 x 431mm	19.5kg	20.9683.0011

Accessories

	Order Code
Clear lens (VNSP)	42.9685.0201
Stipple lens (NSP) standard with fixture	42.9685.0207
8 row lenticular lens (MFL)	42.9685.0203
10 row lenticular lens (MFL)	42.9685.0206
12 row lenticular lens (MFL)	42.9685.0204
Buxom lens (VWFL)	42.9685.0205
USB luminaire programming kit	28.8500.0054

Features

- Optional 1200W or 1000W tungsten lamp.
- More than 6,000 (120V) or 4,700 (230V) lumens (dependent upon lamp and lens type).
- Pastel and satuarate Dicho*tune color system.
- Field angle from 13-43.3° (dependent upon lamp and lens type).
- 16 radially mounted diffuser planes to control beam spread.
- Fanless fixture silent running.
- Two year limited warranty.

Suggested uses:



For more information visit philips.com/vari-lite

Washes: VL550D Wash

The Philips Vari-Lite VL550D Wash luminaire features the innovative DICHRO*TUNE radial mixing system, that employs three sets of 16 radially mounted dichroic filters - magenta, blue and amber - designed to produce smooth, full spectrum color crossfades.

Available with pastel versions of the standard colors. The pastel colors offer a softer, theater color palette often used in live theater. Designed with convection cooled lamps and internally cooled electronics which utilize on-demand low velocity, low noise micro-fans.

The VL550D Wash is most advantageous for those productions that have a limited number of dimmer circuits available. It retains a warm 3200K, and with only a slight increase in weight, provides on-board IGBT dimming without requiring any additional cabling.



Product specification

Light source	Type	CRI	Color temp	Wattage max.	Beam	Dimming	Housing	IP rating	Overall dimensions L x W x H	Weight	Order Code
Tungsten	Standard color dichroic glass		3200K	1200W	6-24° lamp and lens dependent	DMX512	Black	IP20	421 x 454 x 431mm	21.8kg	20.9683.0003
Tungsten	Pastel color dichroic glass		3200K	1200W	6-24° lamp and lens dependent	DMX512	Black	IP20	421 x 454 x 431mm	21.8kg	20.9683.0013

Accessories

	Order Code
Clear lens (VNSP)	42.9685.0201
Stipple lens (NSP) standard with fixture	42.9685.0207
8 row lenticular lens (MFL)	42.9685.0203
10 row lenticular lens (MFL)	42.9685.0206
12 row lenticular lens (MFL)	42.9685.0204
Buxom lens (VWFL)	42.9685.0205
USB luminaire programming kit	28.8500.0054

Features

- Optional 1200W or 1000W tungsten lamp.
- More than 6,000 (120V) or 4,700 (230V) lumens (dependent upon lamp and lens type).
- Pastel and satuarate Dicho*tune color system.
- Field angle from 13-43.3° (dependent upon lamp and lens type).
- 16 radially mounted diffuser planes to control beam spread.
- Fanless fixture silent running.
- Two year limited warranty.

Suggested uses:



For more information visit philips.com/vari-lite

Washes: VL2500 Wash

The Philips Vari-Lite VL2500 Wash is an exceptional CMY color mixing system, fast and powerful pan/tilt functions and an impressive zoom range are what set the VL2500 Wash luminaire apart. The VL2500 Wash features a glass dimmer wheel and dual strobe blades providing designers with smooth, even dimming capability and lightning fast strobe.

The VL2500 Wash luminaire is a valuable tool for any project, no matter what type of event it is. It combines small size and quick movement with features one would normally expect in a much larger luminaire.



Product specification

Light source	CRI	Color temp	Wattage	Beam	Dimming	Housing	IP rating	Overall dimensions H x W	Weight	Order Code
Short Arc	>80	5600K	700W	14-55°	Mechanical glass wheel / dual independent strobe blades	Black	IP20	701 x 477 x 490mm	26.1kg	20.9676.0002

Accessories

	Order Code
700W Short Arc lamp	71.2528.0700
3200K color correction filter	41.6006.0390
USB luminaire programming kit	28.8500.0054

Features

- 700W short arc lamp.
- 14,700 lumens.
- Zoom from 14-55.5°.
- Fast color change 0.14second for color snap.
- Flat even color washes.
- Fast zoom speed 1.8s full range zoom.
- CMY color mixing system.
- 11-slot fixed color wheel.
- Separate dual-blade strobe system.
- Coated glass dimmer wheel.
- Two year limited warranty.

Suggested uses:



For more information visit philips.com/vari-lite

Washes: VLZ Wash

The Philips Vari-Lite VLZ Wash is a dedicated wash luminaire utilizing the latest high output LED light engine and a familiar CMY-CTO color system to produce stunning colors. The dual fixed color wheel with linear control gives access to Vari-Lite colors and split color combinations. Color shake and color wheel spin control have also been added to the mix.

All of this is bundled into a luminaire that produces a staggering 25,000 lumens projected from a large 155mm (6") lens.

In addition to the wide zoom range, Beam-Shaping control can be achieved via 3 different systems used independently of each other; a lenticular lens can change the beam from round to oblong; 4 different beam softness grades are achievable using the beam softening control; a set of internal barndoors shape the beam even further.

The combination of the color and beam control makes the VLZ Wash the go-to professional moving wash luminaire.



Product specification

Light source	CRI	Color temp	Wattage	Beam	Dimming	Housing	IP rating	Overall dimensions L x W x H	Weight	Order Code
LED	.70	8000K source Variable CTO	620W	78-50°	Electronic 16-bit	Black	IP20	458 x 316 x 796mm	39kg	26-105-0003-00

Features

- 25,000 lumen output.
- 155mm large aperture wash lens.
- High output white light LED light source engine to maintain constant high output light levels.
- Wide zoom range.
- 16-bit dimmer control with 4 selectable curves.
- Color mixing system CMY + CTO color control.
- 12 fixed color - 2 color wheels 6+ open with color shake and wheel spin functions.
- Indexing and rotatable beam shaping system.
- 4 selectable beam edge softness.
- Masking barndoor system with 4 blades frame rotation +/- 50 degree either side of center.
- Fast, accurate and repeatable movement on all functions.
- Two year limited warranty.

Suggested uses:



For more information visit philips.com/showline

Washes: VL3500 Wash

The Philips Vari-Lite VL3500 Wash luminaire is the high intensity wash tool in the Vari-Lite Series 3000 family of luminaires. With an output that exceeds 70,000 lumens, as well as varied new options for color and beam control, this has become the standard by which all wash lights are measured.

The VL3500 Wash luminaire features internal zoomable beam optics with either fresnel or buxom options, an interchangeable front lens system, and a five-position aperture wheel. The fixture provides CMY color mixing, variable CTO color temperature correction, dual five position color wheels, a separate dimmer, and an independent dual blade strobe mechanism.

In conjunction with its zoomable optics system is the Vari*Brite mode – from virtually any zoom position, this mode can be engaged to offer a tight column of remarkably intense light.



Product specification

Light source	CRI	Color temp	Wattage	Beam	Dimming	Housing	IP rating	Overall dimensions H x W	Weight	Order Code
MRS	>80	6000K	1500W	24-50° 9.5° zoom by pass	DMX512-A	Black	IP20	508 x 838 x 686mm	44.0kg	20.9686.0001

Features

- >70,000 lumens.
- Zoom range 24-40°.
- CMY color mixing system.
- Large aperture front lens.
- Rotatable appature wheel for big size adjustment and continous scroll for unique effects.
- Unqiue Vari-Brite lens system for great beam control.
- Two year limited warranty.

Suggested uses:



For more information visit philips.com/vari-lite



Philips Lighting Steps into the Light

Celebrated lighting designer Michel Suk has pushed the boundaries of light art once again, selecting 30 Showline SL HYDRUS 350 hybrid luminaires for his latest creation ‘Step into the Light’ – a beautifully immersive piece which joined almost 40 other installations at light art and architecture festival GLOW 2016 in Eindhoven.

Now in its eleventh year, GLOW was originally founded by Philips and the city’s official marketing body Eindhoven365. The festival is produced by the GLOW Foundation Eindhoven, with support from a number of high profile sponsors including Philips Lighting. As visitors from all over Europe meander down the city center and University of Technology walking routes, their journey is punctuated with breathtaking installations, sculptures, projections and performances.

Michel Suk has been involved in the festival since 2006 and doesn’t believe in resting on his laurels, challenging himself to create something uniquely innovative year on year: “Many audiences have seen it all before. Even with the impressive rate that lighting technology is developing, new effects and applications quickly lose their impact. It’s never an easy task to construct a piece that will evoke emotion and please the eye but I relish the opportunity to sharpen my artistic skills.”

For the 2016 edition of the festival, Suk was inspired by the exact location of his piece in the city – Witte Dame, which translates to ‘White Lady’. His concept was therefore to manipulate the pure white beams to create a graceful interplay of light; evoking the movements of a dancer. The Showline SL HYDRUS 350 were positioned in a circle four meters in the air, creating an entrancing effect whether the visitor was standing in the epicenter of the piece gazing up, watching from close by or perceiving it from a great distance.

“The installation had to be relatively high in structure and comprise a large amount of units in order to achieve multiple patterns of light from separate groups,” explains Suk. “I knew I needed a fixture that would work well in outdoor conditions, offering beam shaping capabilities and a very powerful output. The SL HYDRUS 350 fit the bill and presented the chance to use one of the latest fixtures on the market.”



Step into the Light, GLOW 2016, Eindhoven

Lighting designer: Michel Suk

Photography: Frank van Beek

at GLOW 2016

Suk goes on to say he is impressed by the SL HYDRUS 350's in-built features: "the gobo package is interesting and it has a fantastic zoom ratio. All in all it was a wonderful tool with which to realize my vision. I'd like to thank Philips Lighting for sponsoring my project with these fixtures and providing the missing link in the chain to bring it to life."

Colin Kavanagh, Business Leader for Philips Entertainment Lighting said, "We were thrilled to be involved in the GLOW festival and its celebration of light art. It was an honor to support Michel Suk in his project and we were highly impressed with the beautiful and ingenious way in which he made use of the Philips SL HYDRUS 350 fixtures."



Hybrids

	SL HYDRUS 350	VL3500 Wash FX	VL4000 BeamWash
	 		
Source	Platinum 17RA	MRS	MSR
Lamp cap	N/A	SFc10-4	PGJX50
Wattage	350W lamp 500W total power	1500W	1200W
Lumen output (max.)	15,000	>50,000	43,000 standard mode 35,000 studio mode
Color temperature	7000K	6000K	6000K
CRI	85	>80	>75
Beam angle	2-22° beam mode 2-25° spot mode 9-37° wash mode	24-50°	10-60° wash mode 4-40° beam mode 4° shaft mode
Lens options	N/A	PC ultra clear PC stipple fresnel	N/A
Pan / tilt	540° / 270°	540° / 270°	540° / 270°
Controls	DMX512-A, Art-Net™	DMX512-A	DMX512-A / RDM
DMX channels	25	22	46 / 41
Color system	Color wheel 10 + open	CMY, 2 5 + open fixed color wheels, variable CTO	CMY, variable CTO 2 color wheel 5 + open
Gobo / effects	12 + open fixed aperture wheel, 6 + open indexing / rotating	4 + open rotating	2 Gobo wheel 6 + open rotating 1 x Index / rotating animation wheel
Independent rotating prism	4 facet linear 8 facet round	No	5 facet linear
Independent frost	Wash mode	No	N/A
Dimmer / strobe	Mechanical	Mechanical glass wheel / independent dual strobe blades	Mechanical glass blades / independent dual strobe blades
Framing shutters / beam shaping	–	N/A	Lenticular lens
Iris	No	No	Yes
Color calibration	N/A	N/A	N/A
Accessories	–	ULTRA clear front lens Stipple front lens Fresnel front lens	–
Operating voltage	100-240VAC, 50/60Hz	200-264VAC, 50/60Hz	200-264VAC, 50/60Hz
IP rating	IP20	IP20	IP20
Operating temperature	45°C	-29-40°C	-29-40°C standard mode -29-50°C studio mode
Construction	Metal frame, engineering plastic covers	Metal frame, engineering plastic covers	Metal frame, engineering plastic covers
Finish	Black	Black	Black
Dimensions L x H x W	421 x 432 x 656mm	508 x 838 x 686mm	5667 x 890 x 735mm
Hanging centers	600mm	711mm	762mm
Weight	24kg	44kg	45.8kg
Warranty	2 years	2 years	2 years

Hybrids: SL HYDRUS 350

The Showline SL HYDRUS 350 is a hybrid beam / spot / wash moving luminaire designed for special event, television, and concert lighting applications.

Powered by the Philips Platinum 17RA lamp, the luminaire delivers powerful output, great color control and a comprehensive beam effects system in a compact sized luminaire.

The SL HYDRUS 350 is a master of producing fast changing bright colors while still maintaining its high output.



Product specification

Light source	CRI	Color temp	Wattage	Beam	Dimming	Housing	IP rating	Overall dimensions L x W x H	Weight	Order Code
Philips Platinum 17RA	85	7000K	500W	2-20° 2-25° 9-37°	DMX512-A Art-Net™	Black	IP20	421 x 432 x 656mm	24kg	26-095-0110-00

Accessories

	Order Code
2 way flight case	24-021-0003-00

Features

- Beam, spot and wash modes for maximum design flexibility.
- Fixed color wheel with open slot, split color mode and effect mode.
- Fixed gobo / aperture wheel.
- Indexable / rotating gobo wheel with images from the Vari-Lite library.
- Animation wheel for dynamic effects.
- Two rotating beam prisms.
- Choice of DMX512-A or Art-Net™ control.
- Two year limited warranty.

Suggested uses:



For more information visit philips.com/showline

Hybrids: VL3500 Wash FX

The Philips Vari-Lite VL3500 Wash FX has an output that exceeds 70,000 lumens as well as varied options for color and beam control making it the standard by which all wash lights are measured.

The VL3500 Wash FX luminaire features internal zoomable beam optics with either Fresnel or Buxom options, an interchangeable front lens system, and four position plus open rotating FX pattern wheel. The fixture provides CMY color mixing, variable CTO color temperature correction, dual five-position color wheels, a separate dimmer, and an independent dual blade strobe mechanism.

In conjunction with the zoomable optics system is the Vari-Brite mode. From almost any zoom position, this mode can be engaged to offer a tight column of remarkably intense light making the VL3500 Wash FX a versatile wash luminaire.

The VL3500 Wash FX allows users to operate its single lamp at three different wattages via either a control channel setting or a lamp menu option. With only a setting adjustment, the fixture will run its short arc lamp at 900W, 1200W or 1650W without any detrimental effects on the lamp.



Product specification

Light source	CRI	Color temp	Wattage	Beam	Dimming	Housing	IP rating	Overall dimensions L x W x H	Weight	Order Code
MSR Gold Fastfit	>80	6000K	1500W	24-50°	DMX512-A	Black	IP20	508 x 838 x 686mm	44kg	20.9686.0011

Accessories

	Order Code
ULTRA clear front lens	21.9686.1617
Stipple front lens	21.9686.0617
Fresnel front lens	21.9686.0619

Features

- >50,000 lumen output.
- Zoom range of 24-50°.
- Interchangeable front lenses.
- Vari-Brite zoom bypass for narrow 9.5° beam.
- Rotating mid-air effects.
- CMY + variable CTO color mixing.
- 2 fixed color wheel 5 + open
- Two year limited warranty.

Suggested uses:



For more information visit philips.com/vari-lite

Hybrids: VL4000 BeamWash

The Philips Vari-Lite VL4000 BeamWash is designed to provide designers, rental companies, venues and productions with a complement of fixtures offering unlimited design possibilities.

Without the need to change lenses, the VL4000 BeamWash combines stunning wash capabilities with intense beam functionality and the ability to produce a powerful collimated shaft of light. Producing 43,000 lumens in standard mode (35,000 studio mode), the VL4000 BeamWash uses a Philips 1200W lamp to provide incredible point-of-source imagery through its 10inch (254mm) front lens.

When used in wash mode, the luminaire provides a 10 to 60 degree zoom range. By simply adjusting a DMX value, the VL4000 BeamWash can shift to an intense beam luminaire with an amazing 4 to 40 degree beam angle, or a Shaft fixture for a powerful, collimated ray of light where the 4 degree beam angle can be further reduced to near zero.



Product specification

Light source	CRI	Color temp	Wattage	Beam	Dimming	Housing	IP rating	Overall dimensions L x W x H	Weight	Order Code
MSR Gold Fastfit	>75	RGBW	1200W	10-60° wash mode 4-40° beam mode 4° shaft mode	DMX512-A / RDM	Black	IP20	5667 x 890 x 735mm	45.8kg	20.9704.0002

Features

- 1200W Philips MSR Gold FastFit lamp.
- Swap from wash to beam with no lens change.
- Image projection is sharper than standard beam fixtures.
- Studio mode for quitter application uses.
- Multiple hanging rail points.
- Dual opposing color wheels.
- Infinity CMY cross fading system.
- 2 fixed color wheels; five positions each.
- Variable CTO color temperature correction.
- Two gobo wheels; seven rotatable, indexable positions plus open.
- Dual coated glass dimmer flags.
- Dual blade strobe system.
- Beam size iris.
- 43,000 lumens (standard mode), 35,000 lumens (studio mode).
- One animation wheel; rotating indexable pattern with variable motion control.
- Wash mode zoom range from 10-60° (6:1 optics system).
- Beam mode zoom range from 4-40° (10:1 optics system).
- Shaft mode zoom range from 4° to near 0°.
- 5 facet step prism.
- Beam and shaft mode indexing and rotating lenticular effect.
- Wash mode indexing and rotating beam shaping.
- Two year limited warranty.

Suggested uses:



For more information visit philips.com/vari-lite



The Cranberries European Tour 2010

Lighting designer: Sean Burke

AMERICAS

Philips Entertainment U.S.
10911 Petal Street
Dallas, TX 75235
Tel: +1 214647 7880
Fax: +1 214647 8039

ASIA

Philips Entertainment Lighting Asia Limited
Unit C, 14/F, Roxy Industry Centre
No. 41 - 49 Kwai Cheong Road
Kwai Chung, N.T. Hong Kong
Tel: +852 27969786
Fax: +852 27986546

BEIJING

Room 1201, Free Town D Tower,
58 South 3rd Ring Road East
Chaoyang District
Beijing, China
Tel: +8610-58674776
Fax: +8610-58674775

MALAYSIA

B-1-27, Dataran Cascades, No. 13A,
Jalan PJU 5/I, Kota Damansara,
47810 Petaling Jaya, Selangor Darul Ehsan, Malaysia
Tel: +603 7611-7302
Fax: +603-76294192

AUSTRALIA and NEW ZEALAND

Philips Entertainment New Zealand
14H Vega Place, Rosedale
Auckland 0632, New Zealand
Tel: +64 9475 0031

EUROPE

Philips Entertainment Group Europe
Rondweg Zuid 85
Winterswijk 7102 JD Netherlands
Tel: +31 543-542343
Fax: +31 53 4500425

UNITED KINGDOM

Philips Entertainment Group Europe
Unit 24, Sovereign Park
Coronation Road, Park Royal
London
NW10 7QP

