

PEGASUS Software

Application

With the USB Upload Cable (part number **PEGASUS**, sold separately) and the PEGASUS Software (downloaded from one of our web sites as described below), you can connect any USB 2.0 compatible port on a computer to a chain of up to 32 Philips Entertainment luminaires in order to update the luminaire software.

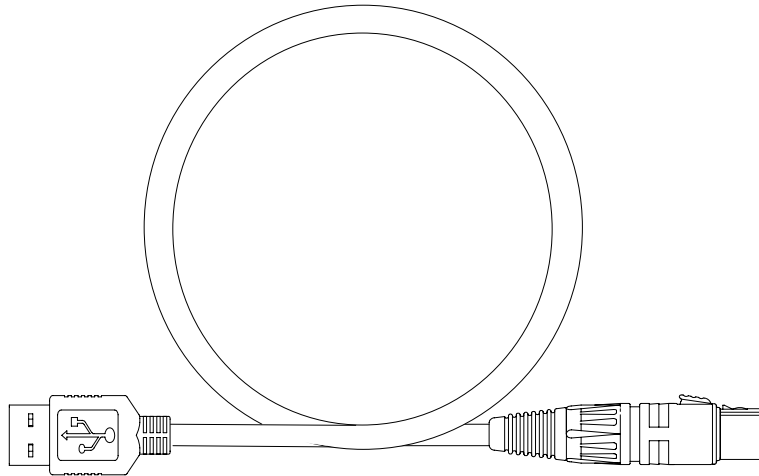


Figure 1: USB Upload Cable (*sold separately*)

Computer Requirements

- PC running Windows. Although the programming kit software is not directly compatible with Macintosh computers, it does run with some Windows emulators.
- An available USB 2.0 compatible port on your computer.
- Internet access to one of web sites (as described below) to download the PEGASUS Software. Regardless from which web site you download the software, the software will contain the ability to update or reinstall luminaire software for all brands.
 - For Selecon luminaires: www.seleconlight.com.
 - For Showline luminaires: www.philips.com/showline.
 - For Strand Lighting products: www.strandlighting.com.
 - For VARI***LITE** luminaires: www.vari-lite.com.

Note: Internet access is only required to download the PEGASUS Software and product firmware files. Internet access is not required to use the program.

Installing PEGASUS Software

To install the PEGASUS Software:

- Step 1. Visit a Philips Entertainment web site (as described in "Computer Requirements" on page 1) and download PEGASUS Software ZIP File.
- Step 2. Unzip file to a folder on your computer.
- Step 3. Double click on **pegasusinstall.msi** icon.
- Step 4. Follow all prompts in program's installation wizard.
- Step 5. Insert USB Upload Cable (*sold separately*) into a USB 2.0 compatible port on your computer.



WARNING: Do not use a USB hub, always connect directly to a USB port on your computer.

- Step 6. When prompted by Windows for upload cable USB driver, use browser window to point to "USB Driver" folder that came with PEGASUS Software and press **OK**.
- Step 7. After USB cable is ready to use, proceed to next step.

Note: Refer to "Upload Cable LED Status Messages" about the three-color LED on the XLR end of the cable.

Troubleshooting

Upload Cable LED Status Messages

Table 1: USB Upload Connector LED Colors

XLR LED Status	Meaning
Continuous Red	Do not use the cable to download software; contact customer service for assistance.
Continuous Purple	Driver software is not installed.
Continuous Blue with Purple pulse every five seconds.	Cable is ready, but data is not being transmitted.
Flashing Blue (twice per second)	Data is being transmitted.

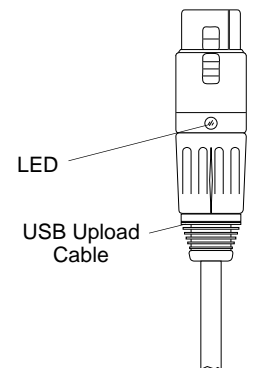


Figure 2: USB Upload Cable

Upload Cable Warning (Error) Message

If you see a warning message (as shown in Figure 3) on your computer screen and the USB Upload Cable is properly connected to USB 2.0 compatible port on your computer, it may not be detected by your computer.

- Disconnect USB Upload Cable from computer and reconnect.
- Reinstall USB Upload Cable Driver as described in, "Installing PEGASUS Software".

If either of the these do not resolve the error message, you may have a defective Upload Cable. Contact customer service at 1.214.647.7880 or entertainment.service@philips.com for assistance.



Figure 3: Upload Cable Error Message



Installing or Updating Luminaire Firmware

When luminaires are data linked together, you can program up to 32 luminaires at the same time; refer to *Connecting Data and Power* in your luminaire or product User's Manual. To program more than 32 luminaires (or devices), program them in batches of 32 or less.

Instructions are slightly different for each product family. refer to the appropriate section for the product you are updating.

- For Selecon luminaires, see "Updating Selecon Luminaires" on page 4.
- For Showline luminaires, see "Updating Showline Luminaires" on page 6.
- For Strand Lighting products, see "Updating Strand Lighting Products" on page 8.
- For VARI***LITE** luminaires, see "Updating VARI***LITE** Luminaires" on page 10.



Important Notes & Warnings:

- ***DMX Data must be disconnected before uploading software to luminaires. Do not merge firmware files with DMX signals.***
- ***You can upload multiple firmware files to a variety of luminaires that are data linked together. Each model of Philips Entertainment luminaire recognizes its own software and only downloads the appropriate file.***
- ***Do not use a USB hub, always connect directly to a USB port on your computer.***
- ***For Selecon luminaires, do not install LED DRIVER files unless instructed to do so by an authorized and certified technician.***

Keep a copy of this guide for future reference.

Updating Selecon Luminaires

To install or update luminaire firmware:



Note: DMX Data must be disconnected before uploading software to luminaires. Do not merge firmware files with DMX signals.

- Step 1. Visit either Strand Lighting or Selecon web site (www.strandlighting.com or www.seleconlight.com) and download product firmware you wish to update.
- Step 2. Unzip firmware file you downloaded to a folder on your computer.
- Step 3. Insert USB Upload Cable (*sold separately*) into a USB 2.0 compatible port on your computer (*do not use a USB hub*).
- Step 4. Double click on PEGASUS Software shortcut on your desktop.
- Step 5. When application opens:
 - a. Select **Selecon** for luminaire type (as shown in Figure 4.).

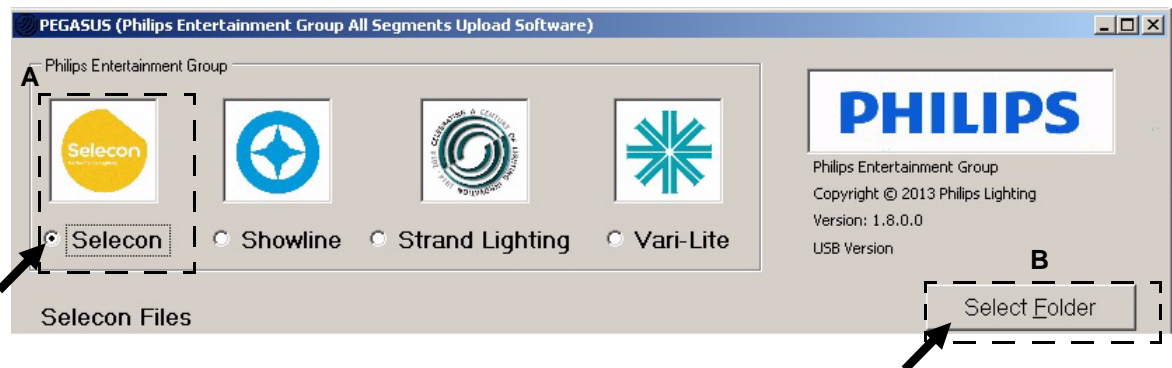


Figure 4: PEGASUS Software Selection Screen

- b. As indicated in Figure 4, click on **Select Folder** button to open browser window.
- Step 6. In browser window, navigate to folder where Selecon firmware was extracted.
 - a. Click on any file in folder.
 - b. Click **Open** button on bottom of screen.

- Continued Next Page -

- Step 7. Click on .bse file for luminaire to be updated (for example, PL3-App v1.32 [129.0.0.013200].bse) as highlighted in Figure 5.

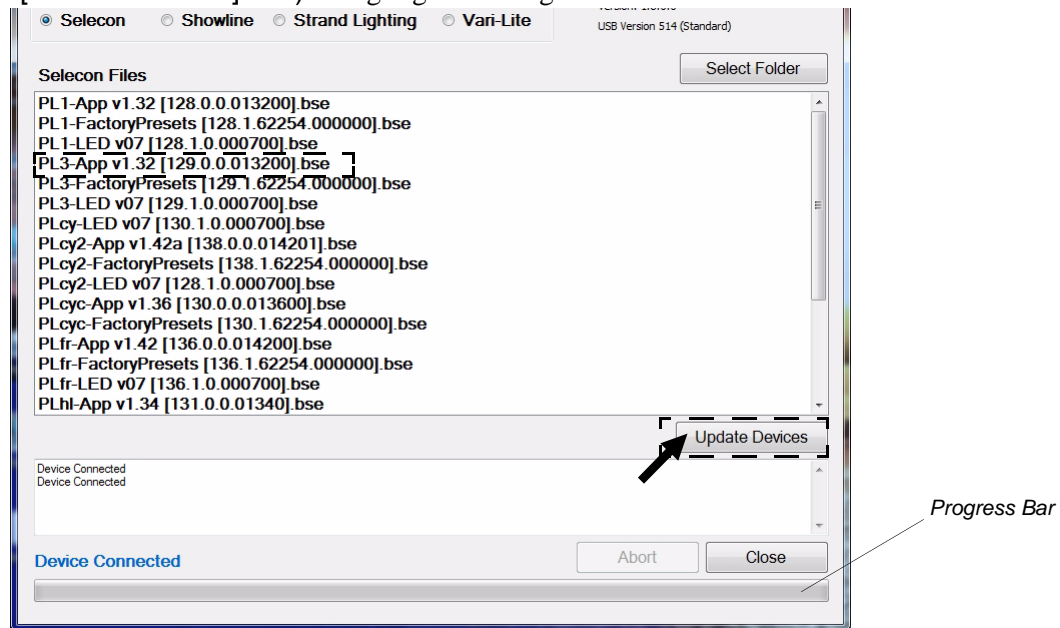


Figure 5: bse File Selection

Note: There are three file types for Selecon products. Refer to the information provided in Table 2, “Selecon File Names and Descriptions”.

Table 2: Selecon File Names and Descriptions

File Name	Description
PL1-App v1.32 [128.0.0.013200].bse	Application Firmware: <product name>-App <version> <ID> - <i>Product firmware</i>
PL1-FactoryPresets [128.1.62254.000000].bse	Factory Presets: <product name>-FactoryPresets <ID> - <i>Reinstalls original factory default presets (Note: Any presets that were saved will be erased)</i>
PL1-LED v07 [128.1.0.000700].bse	LED Driver: <product name>-LED <version> <ID> - <i>Loads LED driver firmware (Note: Only for authorized service personnel use)</i>

- Step 8. As indicated in Figure 5, click on Update Devices to start upload.
- During upload, PEGASUS software and luminaire screens will display a progress bar showing upload status.
 - Once progress bar shows completed on computer screen, wait approximately one minute before moving to next step. *Note, The progress bar on luminaire LCD display may continue for a short time after computer progress bar shows completed.*

- Step 9. Close PEGASUS Software using Close button at bottom of program screen.

Note: You can confirm the software version in the luminaire menu.

Updating Showline Luminaires

To install or update luminaire firmware:



Note: DMX Data must be disconnected before uploading software to luminaires. Do not merge firmware files with DMX signals.

- Step 1. Visit a Showline web site (www.philips.com/showline) and download product firmware you wish to update.
- Step 2. Unzip firmware file you downloaded to a folder on your computer.
- Step 3. Insert USB Upload Cable (*sold separately*) into a USB 2.0 compatible port on your computer (*do not use a USB hub*).
- Step 4. Double click on PEGASUS Software shortcut on your desktop.
- Step 5. When application opens:
 - a. Select **Showline** for luminaire type (as shown in Figure 6.).

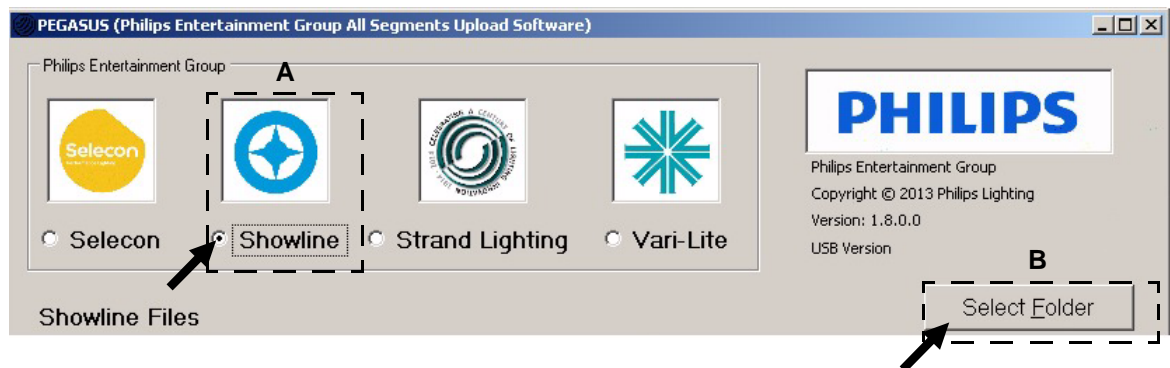


Figure 6: PEGASUS Software Selection Screen

- b. As indicated in Figure 6, click on **Select Folder** button to open browser window.
- Step 6. In browser window, navigate to folder where Showline firmware was extracted.
 - a. Click on any file in folder.
 - b. Click **Open** button on bottom of screen.



Note: Showline luminaires require two file types to be uploaded when installing or updating firmware. Always update both the DRV and UI file types as described in the next steps.

- Continued Next Page -

- Step 7. Click on DRV file for luminaire type to be updated (for example, SL PAR 150 RGBW_DRV_V3_20.ncw) as highlighted in Figure 7.

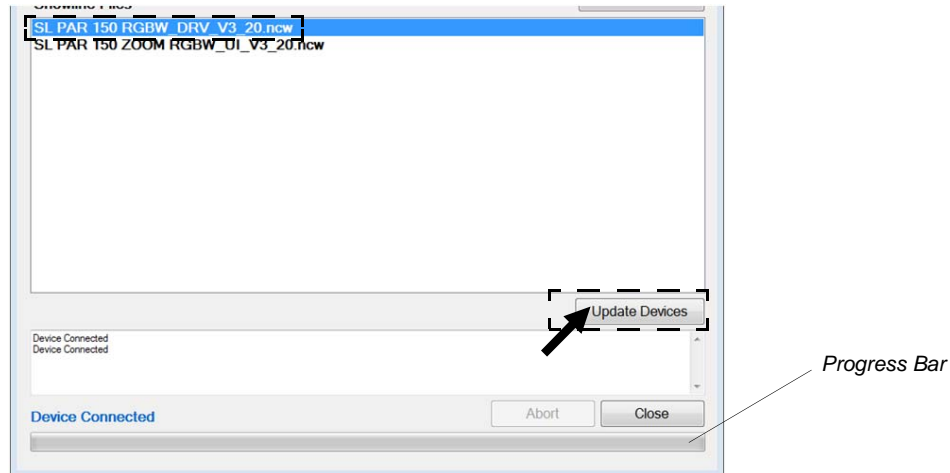


Figure 7: DRV File Selection

- Step 8. As indicated in Figure 7, click on Update Devices to start the upload.
- Upload will happen very quickly.
 - Once progress bar (at bottom of screen as shown in Figure 7) shows the upload is complete, wait approximately 30 seconds before proceeding to next step.
- Step 9. In folder opened in Step 6, click on UI file for luminaire type to be updated (for example, SL PAR 150 RGBW_UI_V3_20.ncw).
- Click on Update Devices to start upload.
 - Upload will take several minutes to complete.
 - Note that you will also see an upload progress bar on luminaire's display as shown in Figure 8.

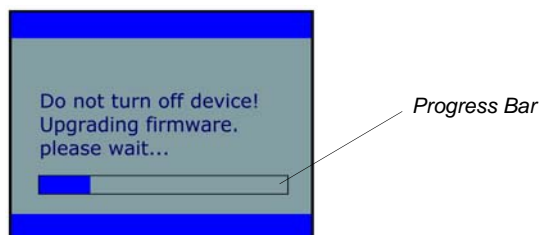


Figure 8: Luminaire LCD Display - Progress Bar

- Once progress bar on the computer screen shows upload is complete, wait approximately one minute before moving to next step. *Note, the progress bar on luminaire LCD display will continue for a short time after computer progress bar shows completed.*
- Step 10. Close PEGASUS Software using Close button at bottom of program screen.
- Step 11. Go to each luminaire and restore Factory Defaults from luminaire's Settings menu.

Note: You can confirm the software version in the luminaire menu by scrolling through the Status menu.

Updating Strand Lighting Products

To install or update product firmware:



Note: DMX Data must be disconnected before uploading software to products. Do not merge firmware files with DMX signals.

- Step 1. Visit either Strand Lighting web site (www.strandlighting.com) and download product firmware you wish to update.
- Step 2. Unzip firmware file you downloaded to a folder on your computer.
- Step 3. Insert USB Upload Cable (*sold separately*) into a USB 2.0 compatible port on your computer (*do not use a USB hub*).
- Step 4. Double click on PEGASUS Software shortcut on your desktop.
- Step 5. When application opens:
 - a. Select Strand Lighting for product type (as shown in Figure 9.).

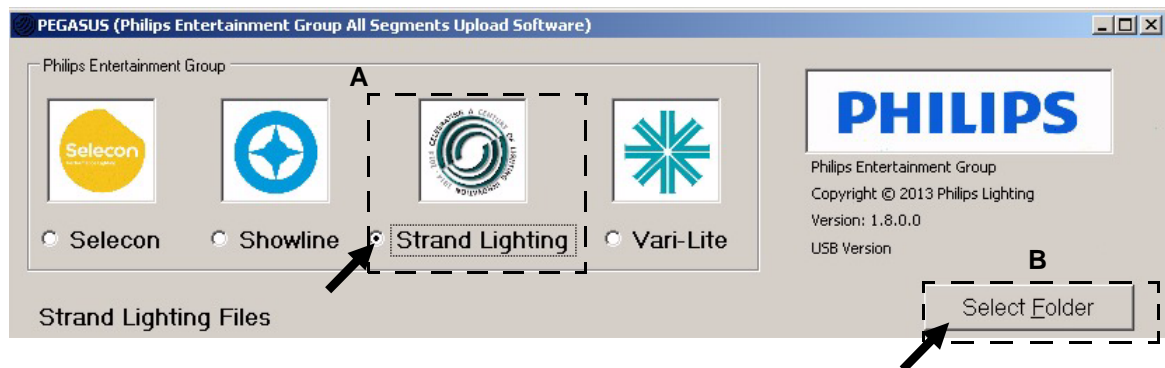


Figure 9: PEGASUS Software Selection Screen

- b. As indicated in Figure 9, click on Select Folder button to open browser window.
- Step 6. In browser window, navigate to folder where Strand Lighting firmware was extracted.
 - a. Click on any file in folder.
 - b. Click Open button on bottom of screen.

- Continued Next Page -

- Step 7. Click on bst file for product to be updated (for example, LEDPAK_130921_[192.0.0.010102].bst) as highlighted in Figure 10.

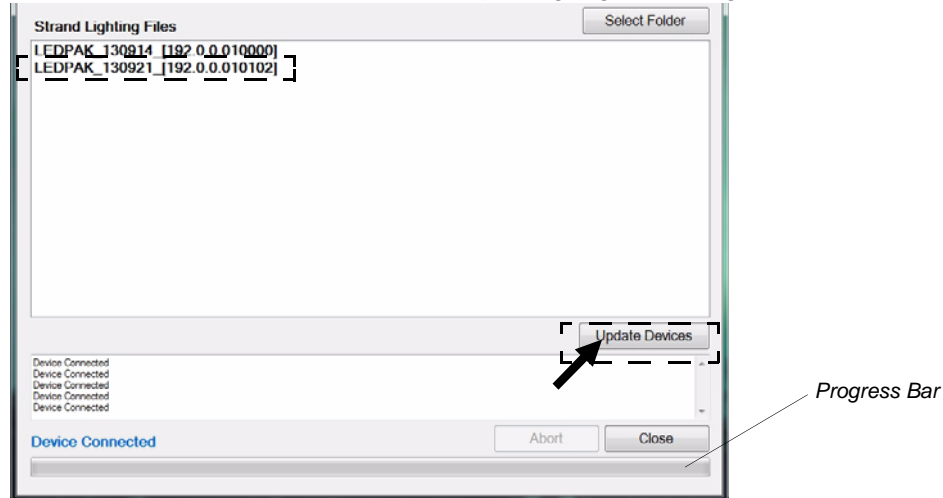


Figure 10: bst File Selection

- Step 8. As indicated in Figure 10, click on Update Devices to start upload.
- During upload, PEGASUS software screen will display a progress bar showing upload status.
 - Once progress bar shows completed on computer screen, wait approximately one minute before moving to next step.
- Step 9. Close PEGASUS Software using Close button at bottom of program screen.

Note: You can confirm the software version in the product menu.

Updating VARI*Lite Luminaires

To install or update luminaire firmware:



Note: DMX Data must be disconnected before uploading software to luminaires. Do not merge firmware files with DMX signals.

- Step 1. Visit Vari-Lite web site (www.vari-lite.com) and download product firmware you wish to update.
- Step 2. Unzip firmware file you downloaded to a folder on your computer.
- Step 3. Insert USB Upload Cable (*sold separately*) into a USB 2.0 compatible port on your computer (*do not use a USB hub*).
- Step 4. Double click on PEGASUS Software shortcut on your desktop.
- Step 5. When application opens:
 - a. Select Vari-Lite for luminaire type (as shown in Figure 11.).

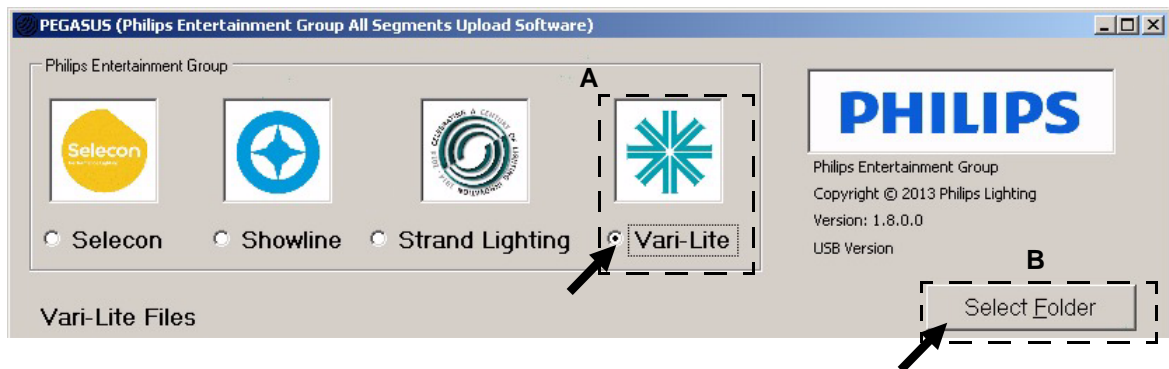


Figure 11: PEGASUS Software Selection Screen

- b. As indicated in Figure 11, click on Select Folder button to open browser window.
- Step 6. In browser window, navigate to folder where Vari-Lite firmware was extracted.
 - a. Click on any file in folder.
 - b. Click Open button on bottom of screen.

- Continued Next Page -

- Step 7. Click on bin file for luminaire to be updated (for example, SVL_080812.bin) as highlighted in Figure 12.

NOTE: Select High Speed option when uploading to 16 or less luminaires.

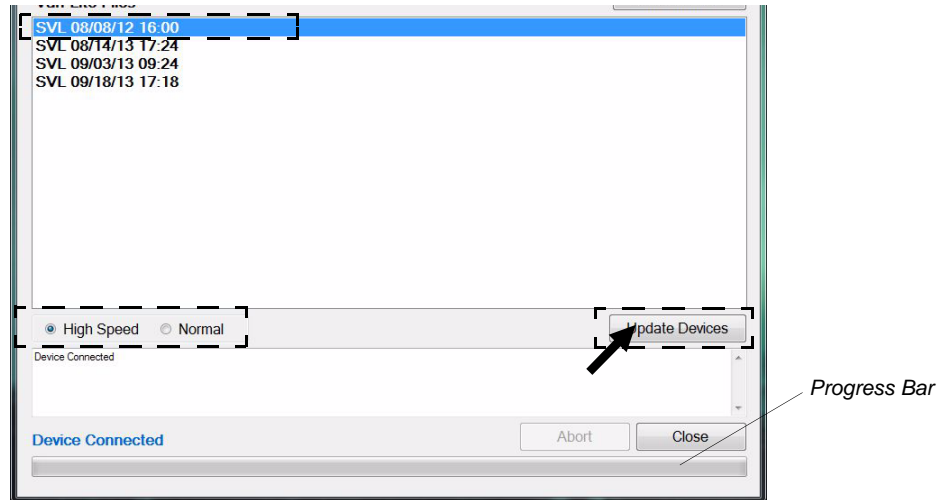


Figure 12: bin File Selection

- Step 8. As indicated in Figure 12, click on Update Devices to start upload.
- During upload, PEGASUS software and luminaire screens will display a progress bar showing upload status.
 - Once progress bar shows completed on computer screen, wait approximately one minute before moving to next step. *Note, The progress bar on luminaire LCD display may continue for a short time after computer progress bar shows completed.*
 - Once the firmware upload is complete, the VARI***LITE** luminaire(s) will automatically recalibrate.
- Step 9. Close PEGASUS Software using Close button at bottom of program screen.

Note: You can confirm the software version in the luminaire menu.

Technical Support

If you require have any questions or require technical support with this or any of our products, please contact our technical support group at 1.214.647.7880 or entertainment.service@philips.com.

Philips Entertainment

10911 Petal Street

Dallas, Texas 75238 USA

1.214.647.7880 Main * 1.214.647.8031 Fax

©2013 Philips Entertainment, A Philips group company. All Rights Reserved.