

PHILIPS

Strand Lighting

TECHNICAL BULLETIN

SUBJECT: Series 200 Plus Console Software Loading Procedure	SERIES: Series 200 Plus Consoles
DISTRIBUTION: Authorized Service Centers, Dealers, and Users	STATUS: Routine

Note: This is a revised version of Technical Bulletins SLTB-035 (dated 29 May 2012) and SLTB-035A (dated 11 June 2012). This version supersedes any and all previous versions.

Introduction

Philips Strand Lighting has discovered an issue with upgrading the software in first generation 200 Plus lighting control consoles.

- This bulletin is for informational purposes only. Inspection or reinstallation of software is not required unless there is a problem with your console or unless instructed to follow this procedure by technical support.
- Review this bulletin in its entirety before proceeding with the procedure contained herein.
- Follow the procedure in [“Software Installation Procedure for First Generation Series 200 Plus Consoles”](#) on page 2 of this bulletin on how to load software.

If you have any questions as to any aspect of this Technical Notice, please contact Strand Lighting customer service at +1-214-647-7880.



WARNING: Any repairs or maintenance to Strand Lighting products should only be performed by a trained and qualified service technician or at an Authorized Strand Lighting Service facility.

Contact Information

For more information on this technical notice or on Strand Lighting products, please contact your Authorized Strand Lighting Dealer or Strand Lighting customer service.

Software Installation Procedure for First Generation Series 200 Plus Consoles



WARNING: You must follow the instructions below in the order written. Only load the software in the order described or the console processor will crash. **YOU MUST LOAD THE SOFTWARE VERSIONS IN NUMERICAL ORDER OR THE CONSOLE WILL BECOME INOPERABLE. THIS DOES MEAN THAT YOUR CONSOLE WILL NO LONGER FUNCTION.**

There are two sets of instructions - The first set of instructions use WinZip on a Windows XP computer. The second set of instructions uses Windows Explorer on a Windows 7 computer. Follow the set of instructions on the computer system you are using.

- [How to Update a 200+ Console \(Using WinZip on a Windows XP computer\)](#) starting on this page.
- [“How to Update a 200+ Console \(Using Windows Explorer on Windows 7 computer\)”](#) on page 6 of this bulletin.

How to Update a 200+ Console (Using WinZip on a Windows XP computer)

To download and install software into first generation 200 Plus Consoles:

- Step 1. Check and write down the version of software you currently have on your 200 Plus lighting control console. To determine your software version, do the following:
- a. Press MENU.
 - b. Press SOFTKEY D "Next" four times.
 - c. The software version will be shown next to SOFTKEY B.
 - d. When you are done press the MENU button again.
- Step 2. From a computer, download the 200+ Software File (*titled, 200 Plus Series Console - 12/24 and 24/48 Versions*) from the Support section of the Strand Lighting website. You can click [HERE](#) for a search link.

Note: The following images (below) are using WinZip with Windows XP. If you use Windows Explorer, your extraction / copy method may differ slightly.

- Step 3. As illustrated in [Figure 1](#), select either:
- a. 200+ 12-24 Software Update folder for 200 Plus 12-24 consoles; **OR**

- b. 200+ 24-48 Software Update folder for the 200 Plus 24-48 consoles.

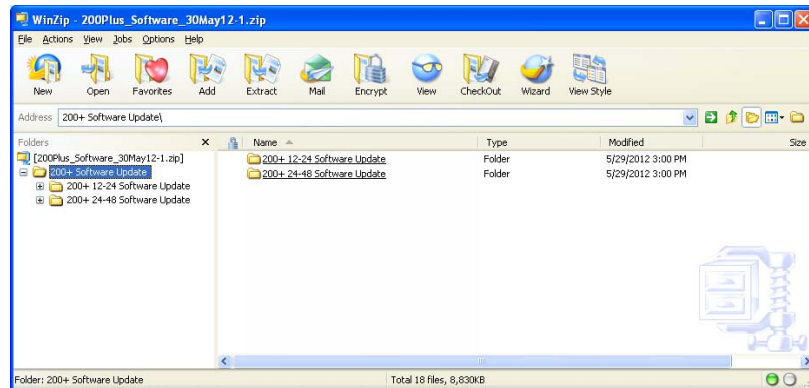


Figure 1: 200 Plus Console Software Update Folders

- Step 4. Depending on what version of software you have installed, double click on the folder that is the next numerical version. For example, if your console currently has software version 1.24, then open the folder for 1.25.

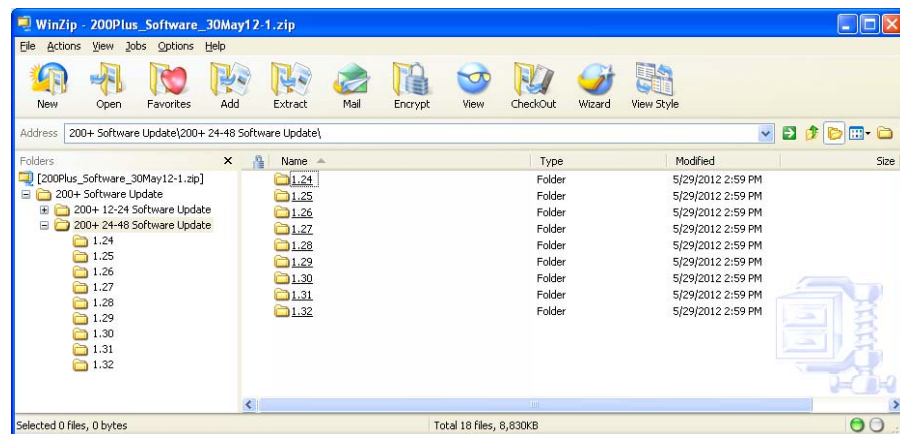


Figure 2: 200 Plus Console Software Update Folder Contents

- Step 5. The software file resides in each V1.XX folder. The file is called SOFTWARE.BIN.
 Step 6. Extract the software file onto the 200 Plus Console's USB key.

Note: The folder and file structure represented in **Figure 3** should mimic what you have on the 200 Plus Console USB key.

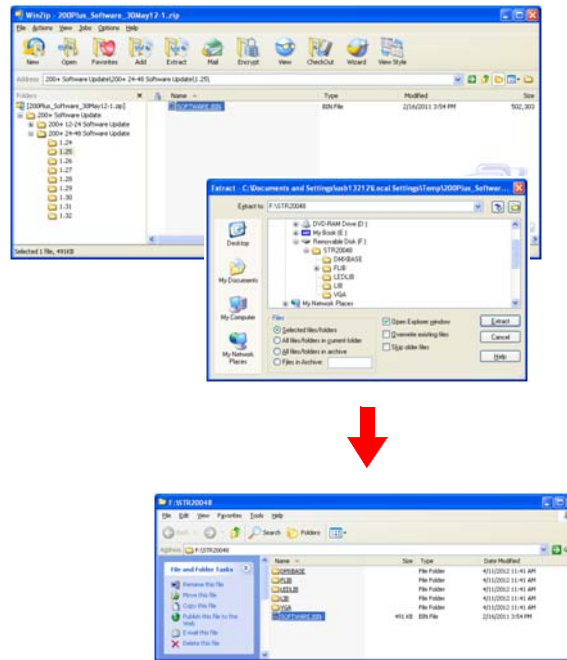


Figure 3: Folder and File Structure Example

- Step 7. Unplug the USB key from the computer and plug it into the 200 Plus Console.
- Step 8. Make sure console is powered and turned on.
- Step 9. Plug USB Key into 200 Plus Console's USB port.
- Step 10. If you are still in the Menu structure, just press MENU to go back into Single Scene Mode and Press the MENU Button to start fresh.
- Step 11. In Single Scene Mode press the MENU Button.
- Step 12. Press the D Button for Next, once.
- Step 13. Press the A Button for Update SW.
- Step 14. Enter password when prompted. The default is 168168. If the password has been changed then enter the new password. If the password is not known, refer to page 67 and 68 of the 200 Plus Console manual for password reset instructions.
- Step 15. The selected software version will now be installed. Once selected software installation is complete, return to the computer with the USB key and replace the software file in the STR20024 and/or STR20048 folders with the next numerical version of software.
- Step 16. Repeat previous steps to load the next version of software.



WARNING: YOU MUST LOAD THE SOFTWARE VERSIONS IN NUMERICAL ORDER OR THE CONSOLE WILL BECOME INOPERABLE. THIS DOES MEAN THAT YOUR CONSOLE WILL NO LONGER FUNCTION.

Step 17. Once all software versions have successfully loaded, test console operation.

How to Update a 200+ Console (Using Windows Explorer on Windows 7 computer)

To download and install software into first generation 200 Plus Consoles:

- Step 1. Check and write down the version of software you currently have on your 200 Plus lighting control console. To determine your software version, do the following:
- Press MENU.
 - Press SOFTKEY D "Next" four times.
 - The software version will be shown next to SOFTKEY B.
 - When you are done press the MENU button again.
- Step 2. From a computer, download the 200+ Software File (*titled, 200 Plus Series Console - 12/24 and 24/48 Versions*) from the Support section of the Strand Lighting website. You can click [HERE](#) for a search link.

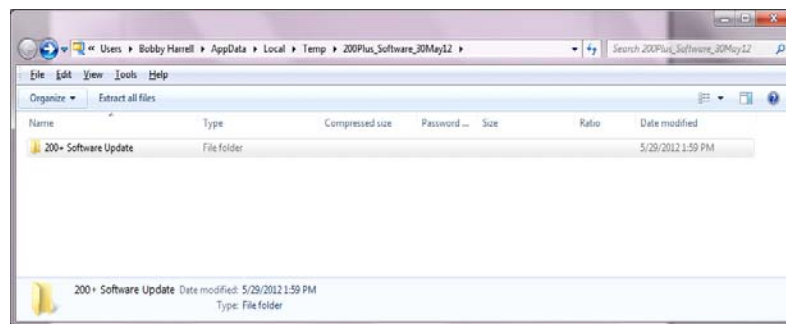


Figure 4: 200 Plus Software Update File

- Step 3. As illustrated in [Figure 5](#), select either:
- 200+ 12-24 Software Update folder for 200 Plus 12-24 consoles; **OR**
 - 200+ 24-48 Software Update folder for the 200 Plus 24-48 consoles.

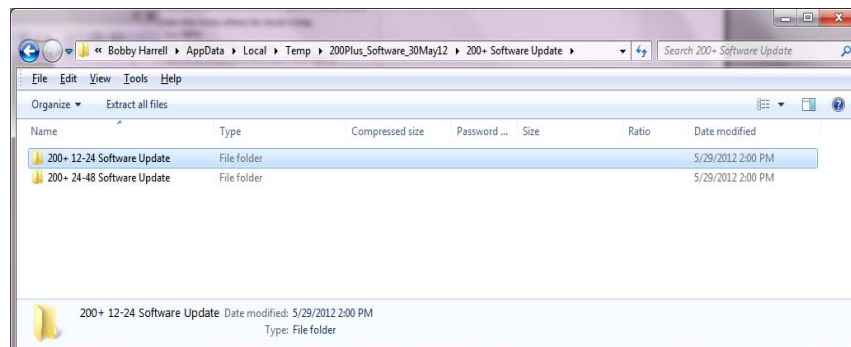


Figure 5: 200 Plus Console Software Update Folders

- Step 4. Depending on what version of software you have installed, double click on the folder that is the next numerical version. For example, if your console currently has software version 1.24, then open the folder for 1.25.

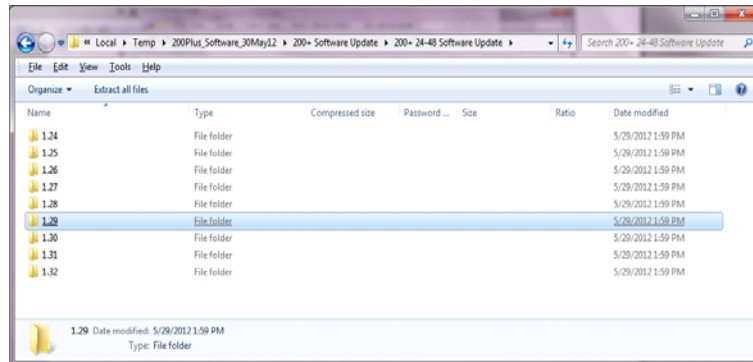


Figure 6: 200 Plus Console Software Update Folder Contents

- Step 5. The software file resides in each V1.XX folder. The file is called SOFTWARE.BIN.
 Step 6. Extract the software file onto the 200 Plus Console's USB key.

Note: The folder and file structure represented in [Figure 7](#) should mimic what you have on the 200 Plus Console USB key.

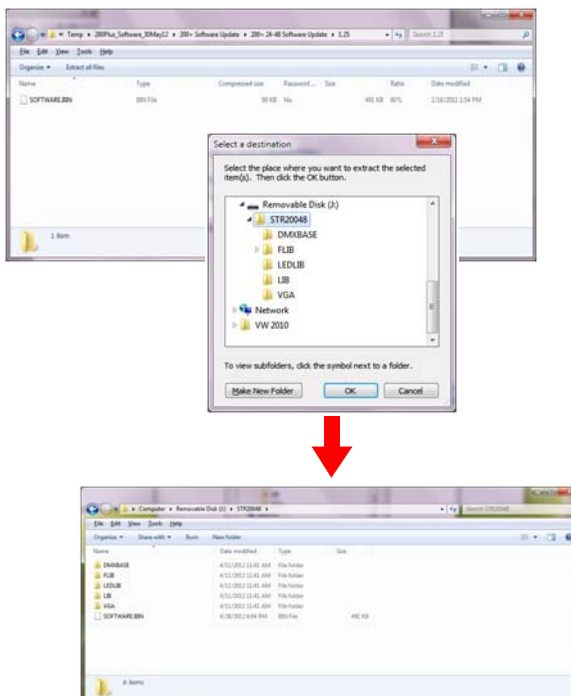


Figure 7: Folder and File Structure Example

- Step 7. Unplug the USB key from the computer and plug it into the 200 Plus Console.

- Step 8. Make sure console is powered and turned on.
- Step 9. Plug USB Key into 200 Plus Console's USB port.
- Step 10. If you are still in the Menu structure, just press MENU to go back into Single Scene Mode and Press the MENU Button to start fresh.
- Step 11. In Single Scene Mode press the MENU Button.
- Step 12. Press the D Button for Next, once.
- Step 13. Press the A Button for Update SW.
- Step 14. Enter password when prompted. The default is 168168. If the password has been changed then enter the new password. If the password is not known, refer to page 67 and 68 of the 200 Plus Console manual for password reset instructions.
- Step 15. The selected software version will now be installed. Once selected software installation is complete, return to the computer with the USB key and replace the software file in the STR20024 and/or STR20048 folders with the next numerical version of software.
- Step 16. Repeat previous steps to load the next version of software.



WARNING: YOU MUST LOAD THE SOFTWARE VERSIONS IN NUMERICAL ORDER OR THE CONSOLE WILL BECOME INOPERABLE. THIS DOES MEAN THAT YOUR CONSOLE WILL NO LONGER FUNCTION.

- Step 17. Once all software versions have successfully loaded, test console operation.