

PHILIPS

LED tubes

NEW **T8** and
T5 options

Look away or
see opportunities?

Real professionals increase their sales with Philips LED tubes

**REAL
PROs**
**REAL
QUALITY**

A LED tube for every **application**

LED tubes only use around half the energy of fluorescents, so the energy savings can repay within a few months. From 24/7 usage downwards, it's the installation costs and tube lifetimes that overwhelmingly set actual repayment times.

We have a light for every application, and a LED tube for every application: bright easy-to-fit tubes that last and last. We've recently broadened our range with some key new versions. Like all our LED tubes, they have the industry's lowest failure rates for ultra reliable operation and lifetime.

Our MASTER LEDtube T8 range gives 50,000 hour lifetime and is for applications needing high performance. Versions come with world-class ultra high 172 lm/W efficiency, ultra high 3700 lumen output, ultra long 70,000 hour life. There's a MASTER LEDtube T8 Universal, too, and a new MASTER LEDtube T8 sensor that brings even greater energy savings in areas that aren't continuously occupied. Our MASTER LEDtube T5 range has Ultra Efficiency types, too.

Fast installation, long reliable life

Philips LED tubes offer 100% safe and hassle-free installation with a simple tube-for-tube replacement. Our EM, mains and InstantFit HF tubes fit straight into existing luminaires.

Our range has the widest ballast compatibility in the market, including the great majority of 600, 1200 and 1500mm versions (see www.philips.com/ledtube).

LED tubes have more than double the life of fluorescents to halve the cost of maintenance. Even with installation and maintenance costs, our tubes pay for themselves within a few months for permanently lit sockets.

High quality professional tubes

Our LED tubes won't flicker or cause glare. They switch on instantly with excellent and uniform color consistency. Defined tube/ballast combinations can be dimmed. And rotating end caps can direct the light where needed. So, a new generation of attractive energy-saving alternatives to fluorescent tubes.



Simplicity. One High-Output LED tube **fits all**

Our new CorePro LEDtube T8 Universal makes it simplicity itself to upgrade the banks of fluorescent tubes you'll see above you as you walk through most buildings. Millions of them are still lighting factories, shopping malls, supermarkets, warehouses and car parks.

It works with all ballast types – EM, HF and mains power. InstantFit gives simple tube-for-tube replacement with 100% safe and hassle-free installation. Just take out the old fluorescent tube and replace it with a 1200 mm or 1500 mm LED tube of the same length. It doesn't get any easier. You get up to 2700 lumens (High Output) with a 30,000 hour life that is double that of fluorescents. Unlike other 'Universal' tubes, all our LED tubes are truly universal, and give out bright, high quality light.

That dramatically cuts installation (and maintenance) times, particularly if you're replacing a variety of ballasts because the lighting installation has been extended over time. You now don't need to check which ballasts will be compatible. They all are! That also means an end to duplicate product stocks.

Smart LED lighting is easily installed

The MASTER LEDtube T8 sensor can make big savings in energy costs when replacing fluorescent tubes in areas that aren't continuously occupied. An integrated motion sensor automatically dims the lights when nobody's around in places like covered car parks, corridors and walkways, storage areas, data centers and server rooms. Areas occupied for less than half the time can cut energy costs by more than 70%.

Installation is simple

The MASTER LEDtube T8 sensor is a fast 1-to-1 replacement for 1200 and 1500 mm T8 fluorescent tubes with EM ballasts. So, upgrading fluorescent tubes to energy saving LED lighting couldn't be easier!

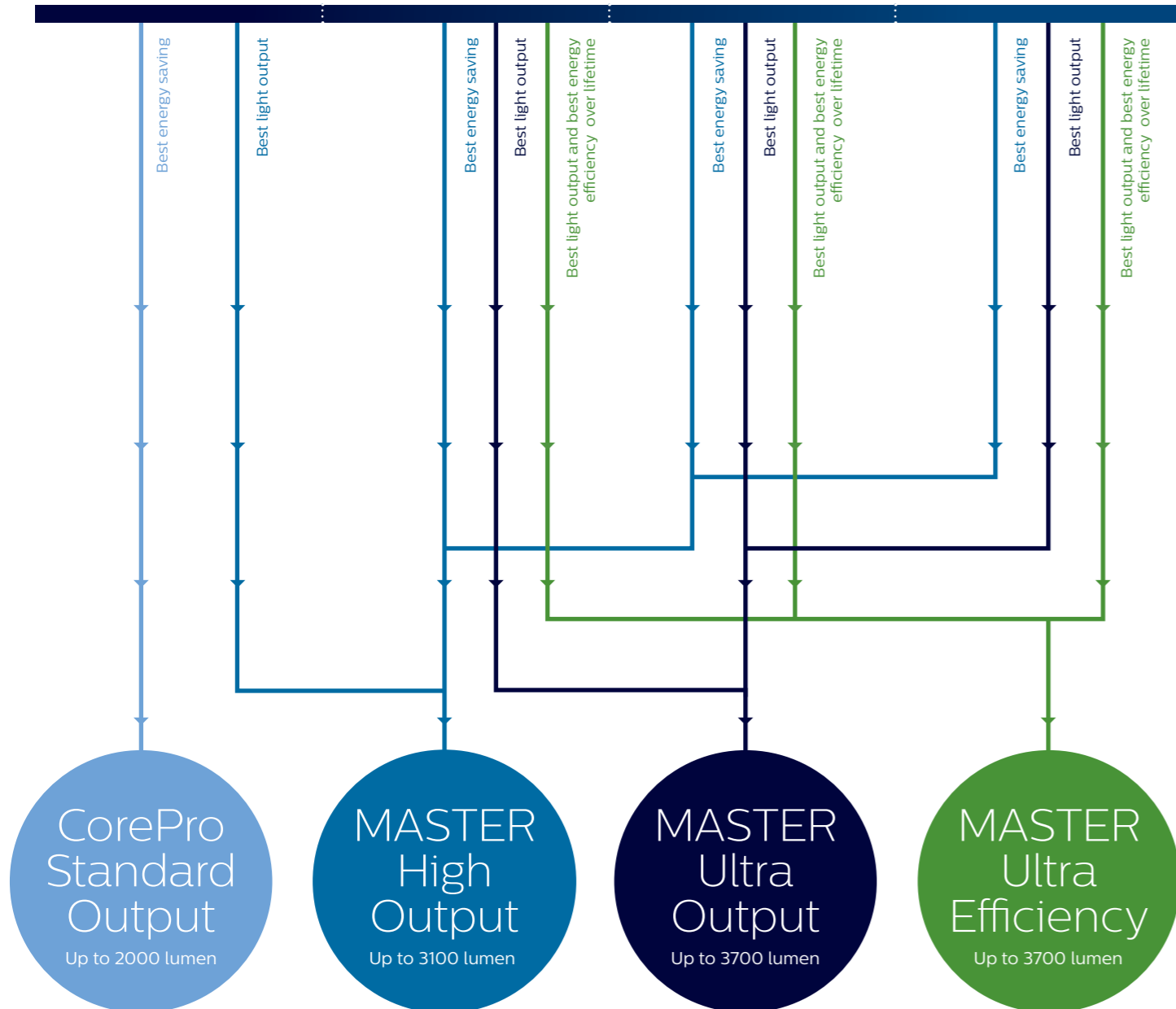
And being an integrated solution, you need no external sensors, controls or wiring. The Passive Infra-Red (PIR) sensor is built into the end cap and detects motion within a 5-meter radius (when luminaires are no higher than 2.5 meters above the ground).

A **LED tube** for every need from the world leader in lighting

Finding the right T8 tube

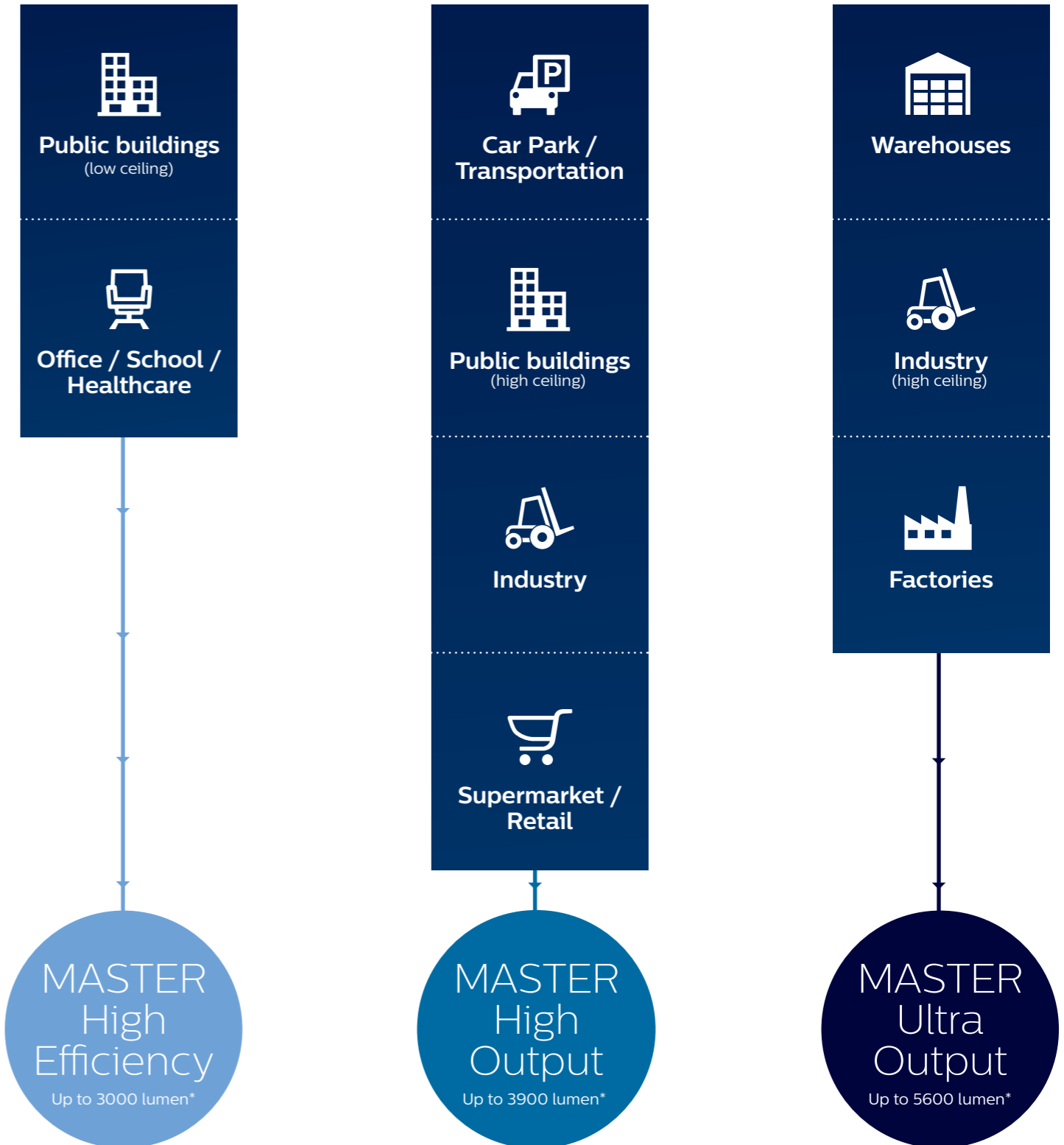
Car Park	Supermarket / Retail	Office / School / Healthcare	Industry
----------	----------------------	------------------------------	----------

- | | | | |
|--|--|---|---|
| <ul style="list-style-type: none"> > Burning hours: 24/7 > Light requirement: 200+ lux | <ul style="list-style-type: none"> > Burning hours: 12 hrs /a day to 24/7 > Light requirement: 500+lux | <ul style="list-style-type: none"> > Burning hours: usually 12 hrs /a day > Light requirement: 500+ lux | <ul style="list-style-type: none"> > Burning hours: varies, max. 24/7 > Light requirement: 200-500+ lux |
|--|--|---|---|



Finding the right T5 tube

◀ I want to save **more energy / less glare** | I want **more light output** ▶



* Typical values for 1500mm length tube at 4000K

Philips LED tube range



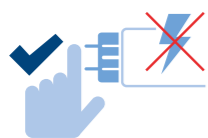
The installer's choice

Installers have even more reasons to choose Philips LED tubes. As you'd expect from the world's leading name in lighting, our quality and attention to detail mean that we make your life safer and easier.



HF compatibility

No wires to replace, no hassle changing drivers; InstantFit works with High Frequency electronic ballasts, making it easy and safe for all installation methods. All you have to do is slot the tube into your existing fitting. And our Universal tubes, which also embed InstantFit, work with EM ballasts and mains too.



Pin safety

With Philips products you can safely touch the other end-cap when installing the tube. The integrated driver is also safely isolated from touchable parts. Philips LED tubes adhere to all UL and IEC pin safety requirements.



Rotating end-caps

In many applications the pin fitting needs to be rotated. This can be a problem as LED tubes only provide directional light. Our T8 MASTER LEDtubes have rotating end caps that let you rotate the tube by up to 90 degrees. So you can always direct the light to best effect.

Finding the right output


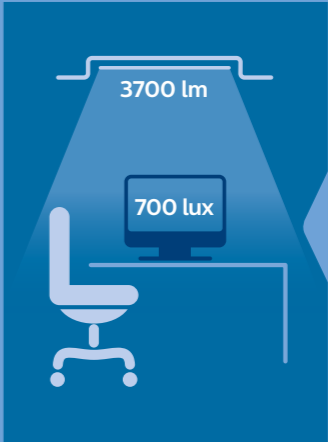
For ultra-output applications, our solutions meet lighting industry standards (EN12464-1) by providing high light levels without causing discomfort or glare*.

Lux

Working, typing reading and data processing require sufficient light with a minimum lux level

Unified Glare Rating (UGR)

The amount of glare, annoyance or reflection created by high or non-uniform brightness must be kept to a minimum

	<h4>Sufficient light</h4> <ul style="list-style-type: none">> Key parameter for minimum required light is indicated in EN12464-1 in lux (lumens per square meter).> EN12464-1 prescribes minimum lux values, uniformity of illumination, and color rendering index, depending on the task.		<h4>Discomfort glare</h4> <ul style="list-style-type: none">> Sensation of annoyance or reflection caused by high or non-uniform brightness (eg. on computer screen).> Amount of glare is indicated in EN 12464-1 standard by Unified Glare Rating (UGR).
--	---	--	--

Lighting requirements

EN12464-1 prescribes minimum lux values, uniformity of illumination and color rendering index, depending on the task



Supermarkets / Retail

- > For Supermarket and Retail applications 500 lux counts as minimum value.
- > UGR standard for Supermarket applications is also set at max 19 UGR.



Industrial

- > For Industry applications, there are many sub segments, each having their own specific standards. In the storage industry segment 300 lux counts as minimum value.
- > UGR standard for Industry applications is set at max 25 UGR.



Office / School / Healthcare

- > For Office applications 500 lux counts as minimum value for writing, typing, reading, data processing, conference and meeting rooms.
- > UGR standard for Office applications is set at max 19 UGR.
- > For most Healthcare applications 200 lux counts as minimum value.
- > UGR standard for applications is set at max 22 UGR.

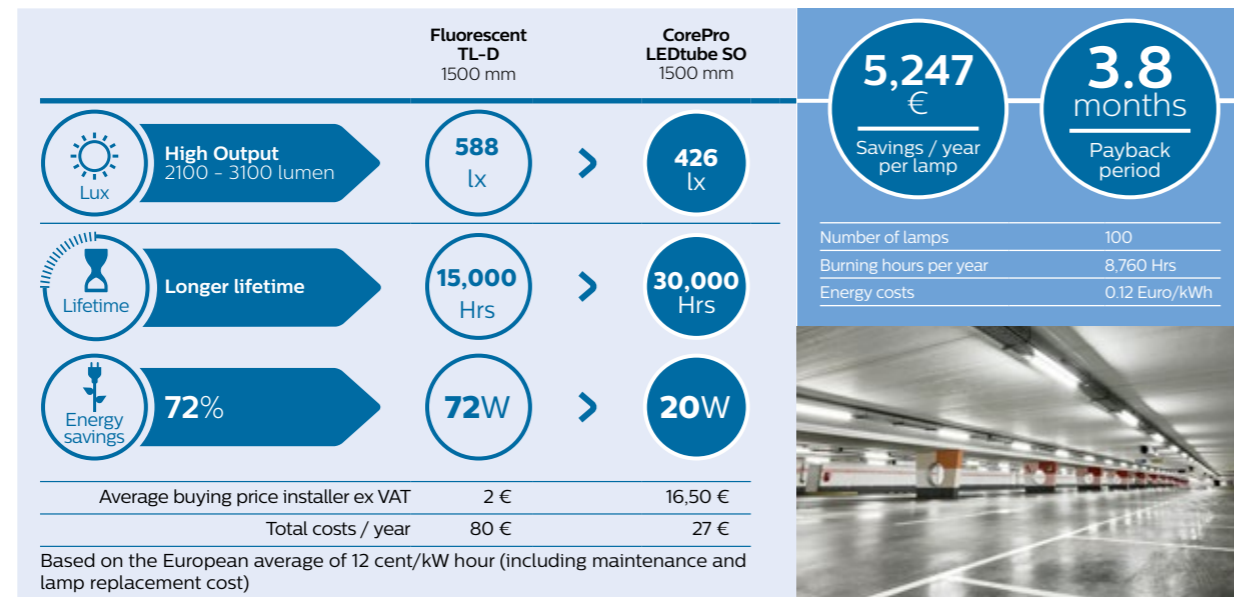
* Final light quality, besides the LED tube, also depends on application circumstances like e.g. type of luminaire used and amount of daylight.

Finding the **right solution** for your application



New standard for car parks

Car parks and transportation networks need to feel bright and welcoming 24 hours a day. White LED light has a higher perceived brightness and superior color rendering, so people feel safer. And because LED is highly reliable and energy efficient, your customers will welcome the savings too.

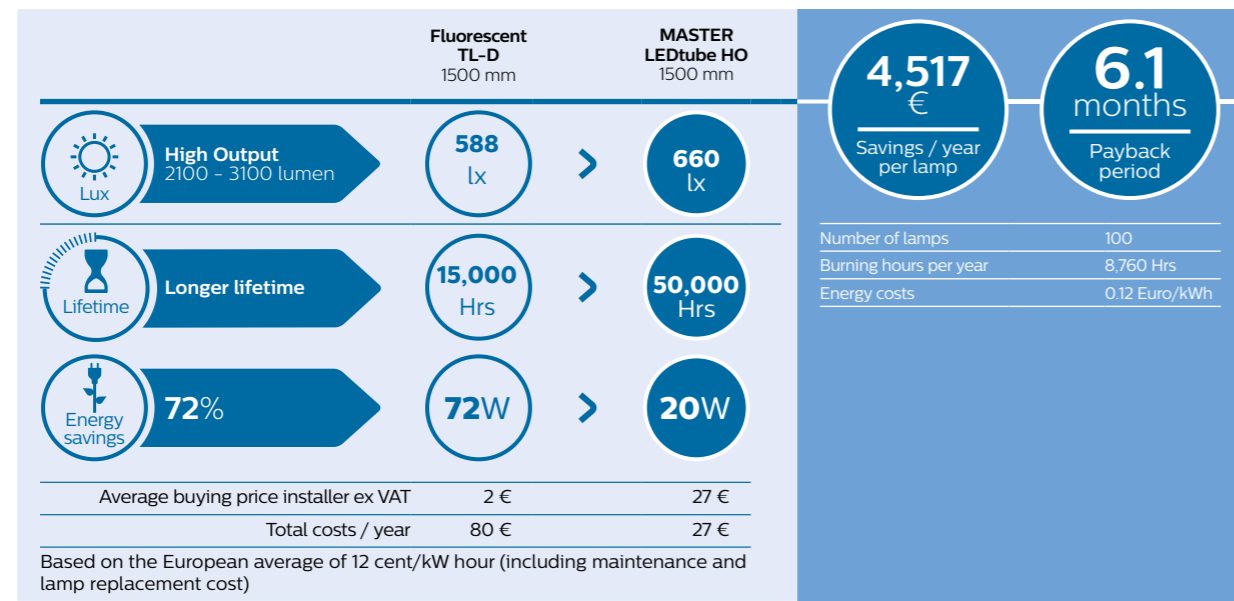


› Choose CorePro LED tubes **Standard Output** for the **most attractive** payback time.



High output for higher standards in car parks

High Output LEDtubes raise the standards in car parks even higher. With a light output of up to 3100 lumen they provide maximum visibility and safety – particularly important in car parks that operate right around the clock.

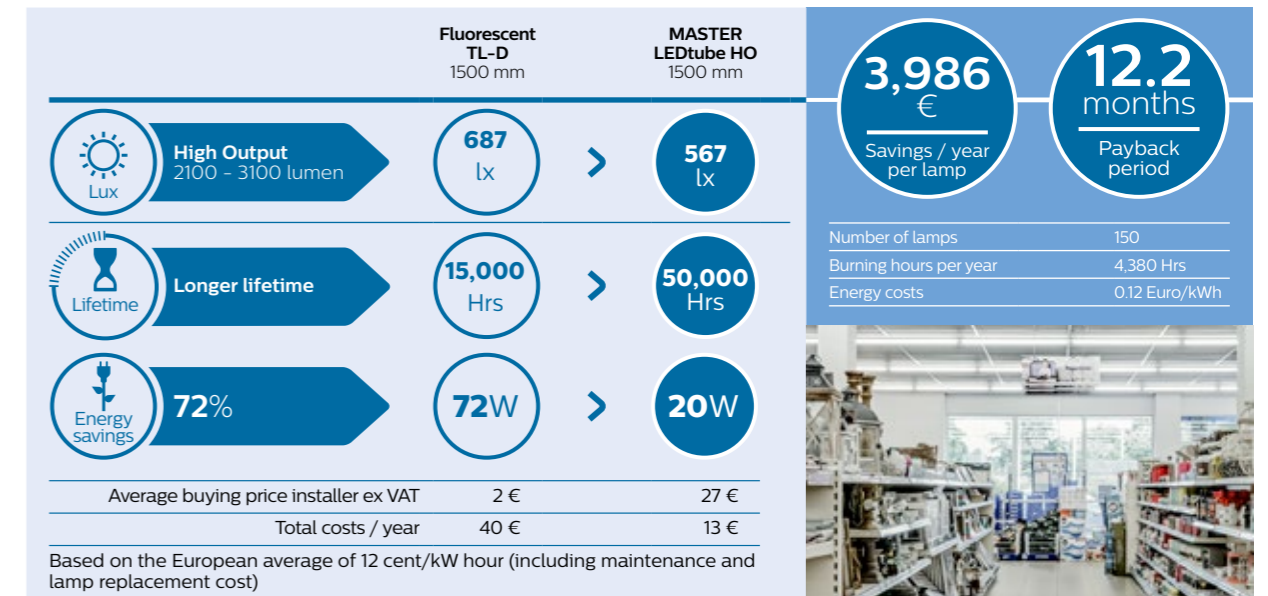


› Choose MASTER LED tubes **High Output** to reach **higher standards** for visibility and safety in car parks.



High output on the high street

Retail stores and hospitality venues know light has the power to attract. It creates irresistible displays, brings brands to life and encourages customers to spend longer in store. With our LED tubes you can light up sales at the same time as reducing energy and maintenance costs.

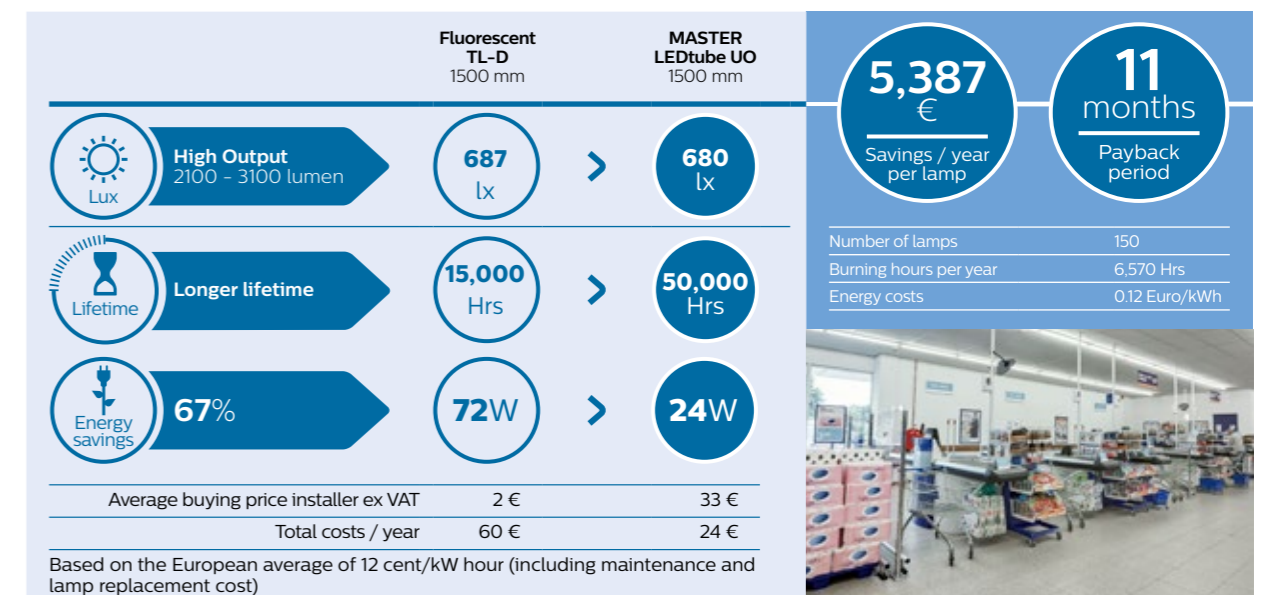


› Choose MASTER LED tubes **High Output** for high light output and **attractive** payback time.



Ultra output for demanding lighting applications in supermarkets and retail

Beautiful lighting brings out the best in the products on display and enhances the shopping experience for customers. But with lamps burning for up to 18 hours a day, food retailers want solutions that will reduce energy and maintenance costs – and show their green credentials in the best light.

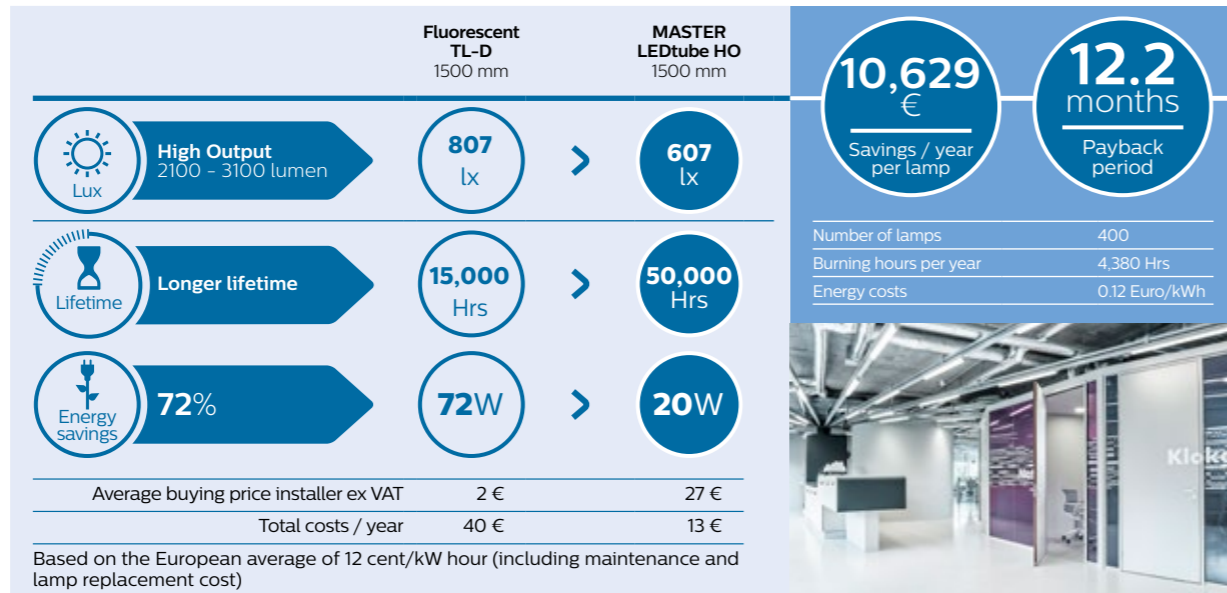


› Choose MASTER LED tubes **Ultra Output** to optimize visibility of products on display and **enhance the shopping experience** for customers.



High output for offices

With a light output of up to 3100 lumen, our High Output LED tubes provide brilliant light quality with the best lumen per watt. A simple switch for offices and healthcare settings that saves on energy but feels bright and welcoming.

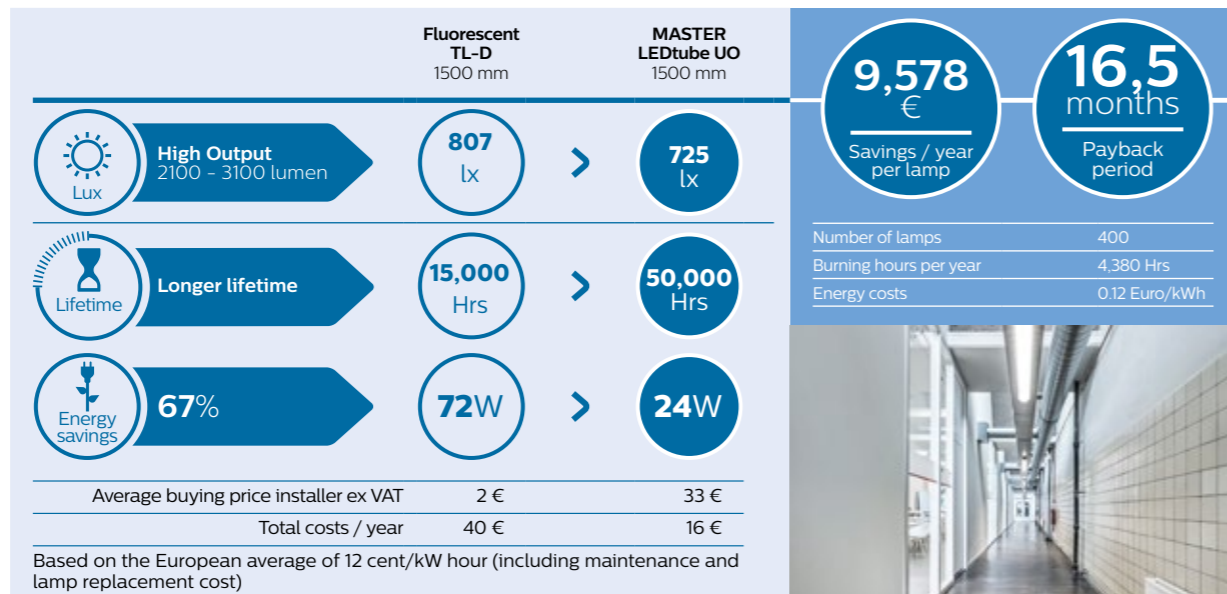


› Choose MASTER LED tubes **High Output** LED tube for a **simple switch** for offices and healthcare settings that save on energy.



Ultra output for more performance in offices

Office and school lighting can influence energy levels, performance and wellbeing. Our solutions shine with impressive, high quality light to create the most comfortable ambience that complies with all office norms and still saves on energy. So business is always a pleasure.

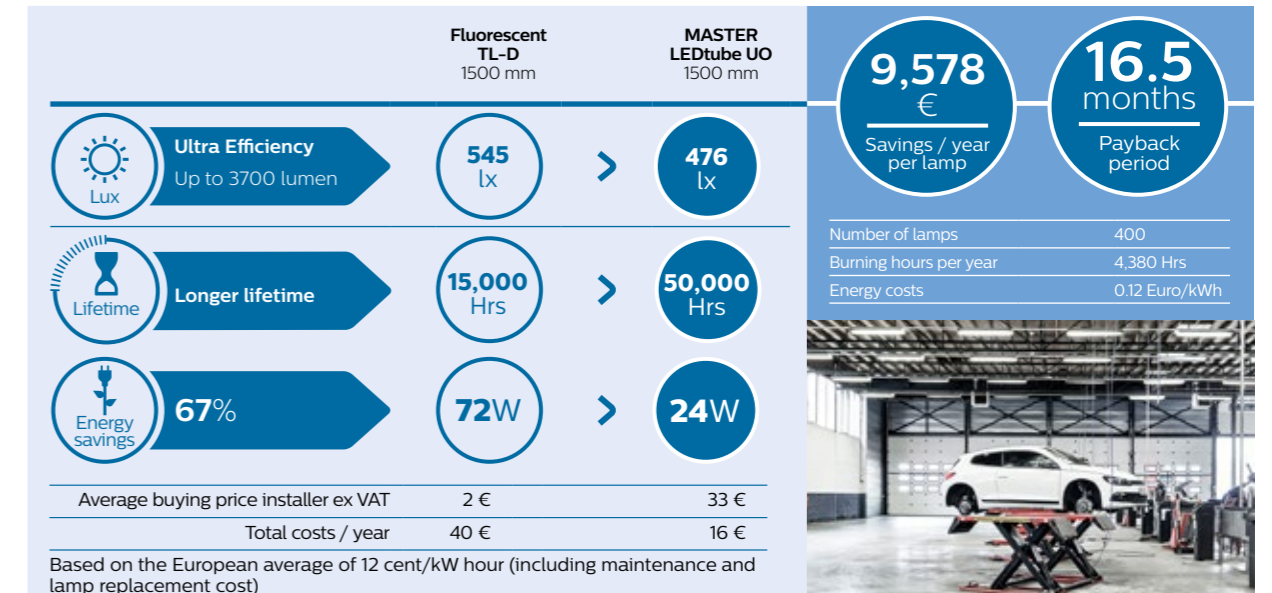


› Choose MASTER LED tubes **Ultra Output** to for **the best light output** in the most demanding office and healthcare applications.



Ultra output for industry applications

In ultra-demanding applications, our Ultra Output LEDtubes take safety and performance to the next level. With a super bright light output of up to 3700 lumen they offer the best light output for maximum visibility and minimal maintenance.

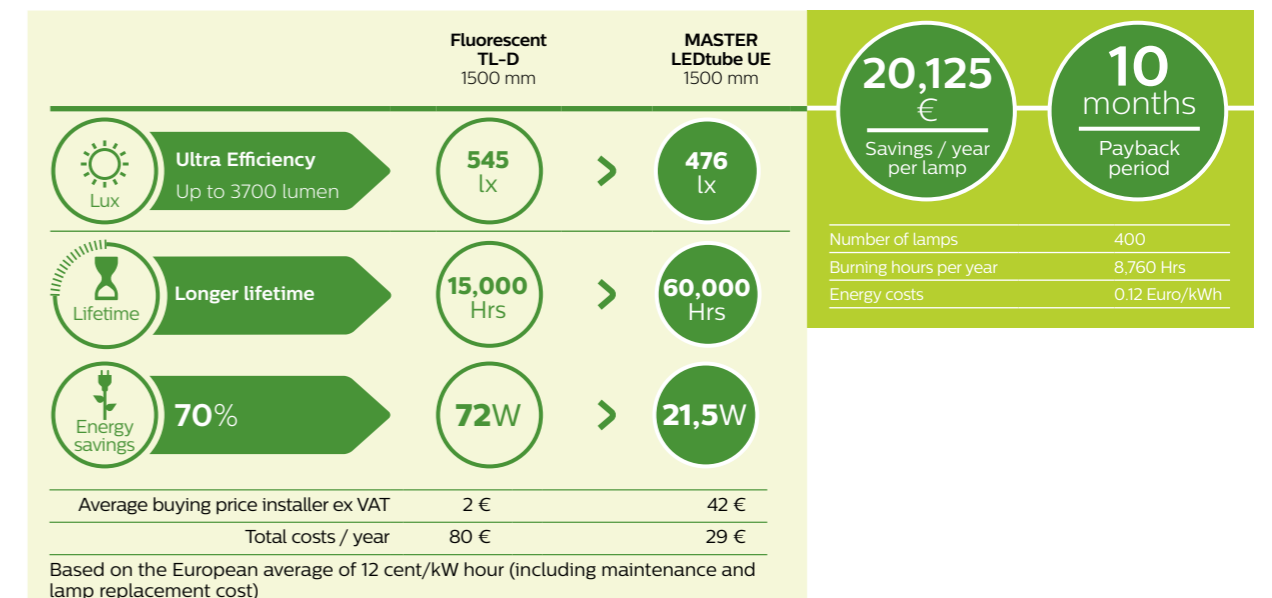


› Choose MASTER LED tubes **Ultra Output** to for the **best light output** in industry applications.



Ultra Efficient for extremely demanding industry applications

In ultra-demanding applications, 24/7 operations can run up expensive energy bills. With a super bright light output of up to 3700 lumen our Ultra Efficiency combine both the best light output for maximum visibility AND the highest lumen per watt efficiency. With an ultra-long lifetime of 60,000 hours, these lamps offer the best Total Cost of Ownership over lifetime.



› Choose MASTER LED tubes **Ultra Efficiency** for the best light output in very demanding industry applications along with the **best Total Cost** of Ownership over lifetime.

Technical specifications

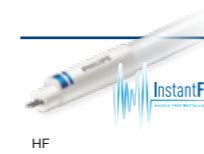


MASTER LEDtube T5 High Output



Product type	LED	Rotatable end cap	Lumen output	Operation	Dimmable	Beam angle	CRI	Color temperature	Lifetime	Energy label	EOC 1 pcs (C)
MASTER LEDtube (HF)	W		lm			°		K	Hrs.		8718696
1500mm HO 26W 830 T5 InstantFit	26	No	3700	HF	No	160	83	3000	50,000	A+	68552500
1500mm HO 26W 840 T5 InstantFit	26	No	3900	HF	No	160	83	3000	50,000	A++	68554900
1500mm HO 26W 865 T5 InstantFit	26	No	3900	HF	No	160	83	6500	50,000	A++	68556300
1200mm HO 26W 830 T5 InstantFit	26	No	3700	HF	No	160	83	3000	50,000	A+	70527800
1200mm HO 26W 840 T5 InstantFit	26	No	3900	HF	No	160	83	6500	50,000	A++	70529200
1200mm HO 26W 865 T5 InstantFit	26	No	3900	HF	No	160	83	6500	50,000	A++	70531500
MASTER LEDtube (Mains)	W		lm			°		K			8718696
1200mm HO 26W 830 T5	26	No	3600	Mains	No	200	80	3000	50,000	A++	81921000
1200mm HO 26W 840 T5	26	No	3900	Mains	No	200	80	4000	50,000	A++	81923400
1200mm HO 26W 865 T5	26	No	3900	Mains	No	200	80	6500	50,000	A++	81925800
1500mm HO 26W 830 T5	26	No	3600	Mains	No	200	80	3000	50,000	A++	81929600
1500mm HO 26W 840 T5	26	No	3900	Mains	No	200	80	4000	50,000	A++	81931900
1500mm HO 26W 865 T5	26	No	3900	Mains	No	200	80	6500	50,000	A++	81933300

MASTER LEDtube T5 Ultra Output



Product type	LED	Rotatable end cap	Lumen output	Operation	Dimmable	Beam angle	CRI	Color temperature	Lifetime	Energy label	EOC 1 pcs (C)
MASTER LEDtube (HF)	W		lm			°		K	Hrs		8718696
1500mm UO 36W 830 T5 InstantFit	36	No	5200	HF	No	160	80	3000	50,000	A++	70599500
1500mm UO 36W 840 T5 InstantFit	36	No	5600	HF	No	160	80	4000	50,000	A++	70603900
1500mm UO 36W 865 T5 InstantFit	36	No	5600	HF	No	160	80	3000	50,000	A++	70605300

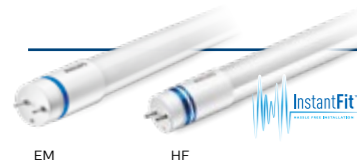
MASTER LEDtube T5 High Efficiency



Product type	LED	Rotatable end cap	Lumen output	Operation	Dimmable	Beam angle	CRI	Color temperature	Lifetime	Energy label	EOC 1 pcs (C)
MASTER LEDtube (HF)	W		lm			°		K	Hrs.		8718696
600mm HE 8W 830 T5 InstantFit	8	No	1000	HF	No	200	83	3000	50,000	A+	74323200
600mm HE 8W 840 T5 InstantFit	8	No	1050	HF	No	200	83	4000	50,000	A+	74325600
600mm HE 8W 865 T5 InstantFit	8	No	1050	HF	No	200	83	6500	50,000	A+	74327000
1200mm HE 16.5W 830 T5 InstantFit	16.5	No	2300	HF	No	200	83	3000	50,000	A+	74329400
1200mm HE 16.5W 840 T5 InstantFit	16.5	No	2500	HF	No	200	83	4000	50,000	A++	74331700
1200mm HE 16.5W 865 T5 InstantFit	16.5	No	2500	HF	No	200	83	6500	50,000	A++	74333100
1500mm HE 20W 830 T5 InstantFit	20	No	2800	HF	No	200	83	3000	50,000	A+	74335500
1500mm HE 20W 840 T5 InstantFit	20	No	3000	HF	No	200	83	4000	50,000	A++	74337900
1500mm HE 20W 865 T5 InstantFit	20	No	3000	HF	No	200	83	6500	50,000	A++	74339300



MASTER LEDtube T8 High Output



EM HF

Product type	LED	Rotatable end cap	Lumen output	Operation	Dimmable*	Beam angle	CRI	Color temperature	Lifetime	Energy label	EOC 1 pcs (C)
EM MASTER LEDtube (EM/Mains)	W		lm			°		K	Hrs		8718696
600mm HO 8W 830 T8	8	Yes	1000	EM & Mains	No	160	83	3000	50,000	A++	69747400
600mm HO 8W 840 T8	8	Yes	1050	EM & Mains	No	160	83	4000	50,000	A++	69749800
600mm HO 8W 865 T8	8	Yes	1050	EM & Mains	No	160	83	6500	50,000	A++	69751100
900mm HO 12W 840 T8	12	Yes	1575	EM & Mains	No	160	83	4000	50,000	A+	68708600
900mm HO 12W 865 T8	12	Yes	1575	EM & Mains	No	160	83	6500	50,000	A++	68710900
											8718699
NEW 1200mm HO 12.5W 830 T8	12.5	Yes	2000	EM & Mains	No	160	83	3000	50,000	A++	59235600
NEW 1200mm HO 12.5W 840 T8	12.5	Yes	2100	EM & Mains	No	160	83	4000	50,000	A++	59237000
NEW 1200mm HO 12.5W 865 T8	12.5	Yes	2100	EM & Mains	No	160	83	6500	50,000	A++	59239400
NEW 1500mm HO 18.2W 830 T8	18.2	Yes	2900	EM & Mains	No	160	83	3000	50,000	A++	59241700
NEW 1500mm HO 18.2W 840 T8	18.2	Yes	3100	EM & Mains	No	160	83	4000	50,000	A++	59243100
NEW 1500mm HO 18.2W 865 T8	18.2	Yes	3100	EM & Mains	No	160	83	6500	50,000	A++	59245500
HF MASTER LEDtube (HF)	W		lm			°		K			8718696
600mm HO 8W865 T8	8	No	1050	HF	No	160	83	6500	50,000	A+	74367600
600mm HO 8W840 T8	8	No	1050	HF	No	160	83	4000	50,000	A+	74355300
600mm HO 8W830 T8	8	No	1000	HF	No	160	83	3000	50,000	A+	74353900
1200mm HO 14W 830 T8 InstantFit	14	Yes	2000	HF	Yes	160	83	3000	50,000	A+	68752900
1200mm HO 14W 840 T8 InstantFit	14	Yes	2100	HF	Yes	160	83	4000	50,000	A++	68748200
1200mm HO 14W 865 T8 InstantFit	14	Yes	2100	HF	Yes	160	83	6500	50,000	A++	68750500
1500mm HO 20W 830 T8 InstantFit	20	Yes	2900	HF	Yes	160	83	3000	50,000	A+	68758100
1500mm HO 20W 840 T8 InstantFit	20	Yes	3100	HF	Yes	160	83	4000	50,000	A++	68754300
1500mm HO 20W 865 T8 InstantFit	20	Yes	3100	HF	Yes	160	83	6500	50,000	A++	68756700

* Dimming a LED tube: please refer to the site www.philips.com/ledtube for the latest update on our InstantFit LED tube/dimming ballast compatibility information.

MASTER LEDtube T8 Ultra Output



EM HF EM & Mains & HF

Product type	LED	Rotatable end cap	Lumen output	Operation	Dimmable*	Beam angle	CRI	Color temperature	Lifetime	Energy label	EOC 1 pcs (C)
EM MASTER LEDtube (EM/Mains)	W		lm			°		K	Hrs		8718696
1200mm UO 16W 830 T8	16	Yes	2300	EM & Mains	No	160	83	3000	50,000	A++	68736900
1200mm UO 16W 840 T8	16	Yes	2500	EM & Mains	No	160	83	4000	50,000	A++	68738300
1200mm UO 16W 865 T8	16	Yes	2500	EM & Mains	No	160	83	6500	50,000	A++	68740600
1500mm UO 24W 830 T8	24	Yes	3400	EM & Mains	No	160	83	3000	50,000	A++	68742000
1500mm UO 24W 840 T8	24	Yes	3700	EM & Mains	No	160	83	4000	50,000	A++	68744400
1500mm UO 24W 865 T8	24	Yes	3700	EM & Mains	No	160	83	6500	50,000	A++	68746800
1800mm 25W 840 T8	25	Yes	3700	EM & Mains	No	160	83	4000	50,000	A+	48037300
HF MASTER LEDtube (HF)	W		lm			°		K			8718696
1200mm UO 16W 830 T8 InstantFit	16	Yes	2300	HF	Yes	160	83	3000	50,000	A+	68800700
1200mm UO 16W 840 T8 InstantFit	16	Yes	2500	HF	Yes	160	83	4000	50,000	A++	68796300
1200mm UO 16W 865 T8 InstantFit	16	Yes	2500	HF	Yes	160	83	6500	50,000	A++	68798700
1500mm UO 24W 830 T8 InstantFit	24	Yes	3500	HF	Yes	160	83	3000	50,000	A++	68806900
1500mm UO 24W 840 T8 InstantFit	24	Yes	3700	HF	Yes	160	83	4000	50,000	A++	68802100
1500mm UO 24W 865 T8 InstantFit	24	Yes	3700	HF	Yes	160	83	6500	50,000	A++	68804500
UN MASTER LEDtube (Universal)	W		lm			°		K			8718696
1200mm UO 16W 830 T8 Universal	16	Yes	2300	EM & Mains & HF	Yes	160	83	3000	50,000	A++	72853600
1200mm UO 16W 840 T8 Universal	16	Yes	2500	EM & Mains & HF	Yes	160	83	4000	50,000	A++	70537700
1200mm UO 16W 865 T8 Universal	16	Yes	2500	EM & Mains & HF	Yes	160	83	6500	50,000	A++	70539100
1500mm UO 24W 830 T8 Universal	24	Yes	3400	EM & Mains & HF	Yes	160	83	3000	50,000	A++	72851200
1500mm UO 24W 840 T8 Universal	24	Yes	3700	EM & Mains & HF	Yes	160	83	4000	50,000	A++	70533900
1500mm UO 24W 865 T8 Universal	24	Yes	3700	EM & Mains & HF	Yes	160	83	6500	50,000	A++	70535300

* Please refer to the site www.philips.com/ledtube for the latest information about ballast compatibility. Dimming a LED tube: please refer to the site www.philips.com/ledtube for the latest update on our InstantFit LED tube/dimming ballast compatibility information.



MasterConnect LEDtube T8 Ultra Output



interact ready.

EM

Product type	LED	Rotatable end cap	Lumen output	Operation	Dimmable	Beam angle	CRI	Color temp.	Lifetime	Energy label	Stand-by power	Frequency	EOC 1 pcs (C)
MASTER LEDtube (EM/Mains)	W		lm			°		K	Hrs		W		8718696
1200mm UO 16.5W830 T8	16,5	Yes	2300	EM & Mains	Wireless Dim	160	83	3000	50,000	A++	<= 0.6	2.4GHz	773437
1200mm UO 16.5W840 T8	16,5	Yes	2500	EM & Mains	Wireless Dim	160	83	4000	50,000	A++	<= 0.6	2.4GHz	773451
1200mm UO 16.5W865 T8	16,5	Yes	2500	EM & Mains	Wireless Dim	160	83	6500	50,000	A++	<= 0.6	2.4GHz	773475
1500mm UO 25.5W830 T8	25,5	Yes	3400	EM & Mains	Wireless Dim	160	83	3000	50,000	A++	<= 0.6	2.4GHz	773499
1500mm UO 25.5W840 T8	25,5	Yes	3700	EM & Mains	Wireless Dim	160	83	4000	50,000	A++	<= 0.6	2.4GHz	773512
1500mm UO 25.5W865 T8	25,5	Yes	3700	EM & Mains	Wireless Dim	160	83	6500	50,000	A++	<= 0.6	2.4GHz	773536

MASTER LEDtube T8 Ultra Efficiency



EM

Product type	LED	Rotatable end cap	Lumen output	Operation	Dimmable	Beam angle	CRI	Color temperature	Lifetime	Energy label	EOC 1 pcs (C)
MASTER LEDtube (EM/Mains)	W		lm			°		K	Hrs		8718696
1200mm UE 14.5W 840 T8	14,5	Yes	2500	EM & Mains	No	160	83	4000	70,000	A++	73150500
1200mm UE 14.5W 865 T8	14,5	Yes	2500	EM & Mains	No	160	83	6500	70,000	A++	73152900
1500mm UE 21.5W 840 T8	21,5	Yes	3700	EM & Mains	No	160	83	4000	70,000	A++	73154300
1500mm UE 21.5W 865 T8	21,5	Yes	3700	EM & Mains	No	160	83	6500	70,000	A++	73156700

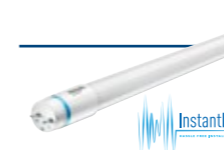
Smart Sensor



interact ready.

Product type	Technology	Type	Power	Battery lifetime	Frequency	RF range	Mounting range	Field of view (FOV)	IP	EOC 1 pcs (C)
Occupancy sensor						Nominal (W)	M	sqm h=2.5m		8718696
OCC SENSOR IA CM IP42 WH	Passive Infrared (PIR)	Occupancy, ceiling	Battery	> 8 years	2.4GHz	15	2.5 to 4	40	42	777534
NEW OCC-DL SENSOR IA CM IP42 WH	Passive Infrared (PIR)	Occupancy & Daylight sensing, ceiling	Battery	> 8 years	2.4GHz	15	2.5 to 4	40	42	777541

MASTER LEDtube T8 Food



HF

Product type	LED	Rotatable end cap	Lumen output	Operation	Dimmable	Beam angle	CRI	Color temperature	Lifetime	Energy label	EOC 1 pcs (C)	G13
MASTER LEDtube (EM/Mains)	W		lm			°		K	Hrs		8718696	
1200mm 12W833 T8 food	12	Yes	1000	EM & Mains	No	160	83	3300	50,000	A+	76393300	Yes
1500mm 20W833 T8 food	20	Yes	1680	EM & Mains	No	160	83	3300	50,000	A+	76395700	Yes
900mm 8.5W833 T8 food	8,5	Yes	750	EM & Mains	No	160	83	3300	50,000	A+	76391900	Yes
MASTER LEDtube (HF)	W		lm			°		K	Hrs		8718696	
1200mm 16.5W833 T8 food	16,5	Yes	1000	HF	No	160	83	3300	50,000	B	56616900	Yes



MASTER LEDtube T8 sensor



EM

Product type	LED	Rotatable end cap	Lumen output	Operation	Dimmable*	Beam angle	CRI	Color temp.	Lifetime	Energy label	EOC 1 pcs (C)
EM MASTER LEDtube (EM/Mains)	W		lm			°		K	Hrs		8718696
NEW 1200mm HO 16.5W840 T8	16.5	No	2100	EM & Mains	Yes	240	83	4000	50,000	A++	80611100
NEW 1200mm HO 16.5W865 T8	16.5	No	2100	EM & Mains	Yes	240	83	6500	50,000	A++	80613500
NEW 1500mm HO 24W840 T8	24	No	3100	EM & Mains	Yes	240	83	4000	50,000	A++	80615900
NEW 1500mm HO 24W865 T8	24	No	3100	EM & Mains	Yes	240	83	6500	50,000	A++	80617300

CorePro LED tube T8 Standard Output



EM

Product type	LED	Lumen output	Operation	Dimmable*	Beam angle	CRI	Color temp.	Lifetime	Energy label	EOC 1 pcs (C)
EM CorePro LED tube (EM/Mains)	W	lm			°		K	Hrs		8718696
600mm 8W 840 T8	8	800	EM & Mains	No	240	80	4000	30,000	A+	71103300
600mm 8W 865 T8	8	800	EM & Mains	No	240	80	6500	30,000	A+	71105700
1200mm 16W 840 T8	14,5	1600	EM & Mains	No	240	80	4000	30,000	A+	71107100
1200mm 16W 865 T8	14,5	1600	EM & Mains	No	240	80	6500	30,000	A+	71109500
1500mm 20W 840 T8	20	2200	EM & Mains	No	240	80	4000	30,000	A+	71091300
1500mm 20W 865 T8	20	2200	EM & Mains	No	240	80	6500	30,000	A+	71095100

CorePro LED tube T8 High Output



EM

UN



Product type	LED	Lumen output	Operation	Dimmable*	Beam angle	CRI	Color temp.	Lifetime	Energy label	EOC 1 pcs (C)
EM CorePro LED tube (EM/Mains)	W	lm			°		K	Hrs		8718696
1200mm HO 18W 865 T8	18	2000	EM & Mains	No	240	80	6500	30,000	A+	80611100
1200mm HO 18W 840 T8	18	2000	EM & Mains	No	240	80	4000	30,000	A+	80613500
1500mm HO 24W 865 T8	24	2700	EM & Mains	No	240	80	6500	30,000	A+	80615900
1500mm HO 24W 840 T8	24	2700	EM & Mains	No	240	80	4000	30,000	A+	80617300
UN CorePro LED tube (Universal)	W	lm			°		K	Hrs		8718696
1200mm HO 18W830 T8	18	1850	EM & Mains & HF	No	240	80	3000	30,000	A+	80166600
1200mm HO 18W840 T8	18	2000	EM & Mains & HF	No	240	80	4000	30,000	A+	80168000
1200mm HO 18W865 T8	18	2000	EM & Mains & HF	No	240	80	6500	30,000	A+	80170300
1500mm HO 23W830 T8	23	2500	EM & Mains & HF	No	240	80	3000	30,000	A+	80172700
1500mm HO 23W840 T8	23	2700	EM & Mains & HF	No	240	80	4000	30,000	A+	80174100
1500mm HO 23W865 T8	23	2700	EM & Mains & HF	No	240	80	6500	30,000	A+	80176500

Protection starter



Product type	EOC 10 pcs (I)
Accessory	8718291
Starter EMP	72928000

* Dimming a LED tube: please refer to the site www.philips.com/ledtube for the latest update on our InstantFit LED tube/dimming ballast compatibility information.



© 2018 Philips Lighting Holding B.V. All rights reserved. This document contains information relating to Philips Lighting product portfolio. Note that the information provided is subject to change. Philips Lighting does not give any representation or warranty as to the accuracy or completeness of the information included herein and shall not be liable for any action in reliance thereon. The information presented in this document is not intended as any commercial offer and does not form part of any quotation or contract. Trademarks are the property of Koninklijke Philips N.V., Philips Lighting Holding B.V. or their respective owners.

www.philips.com/ledtube