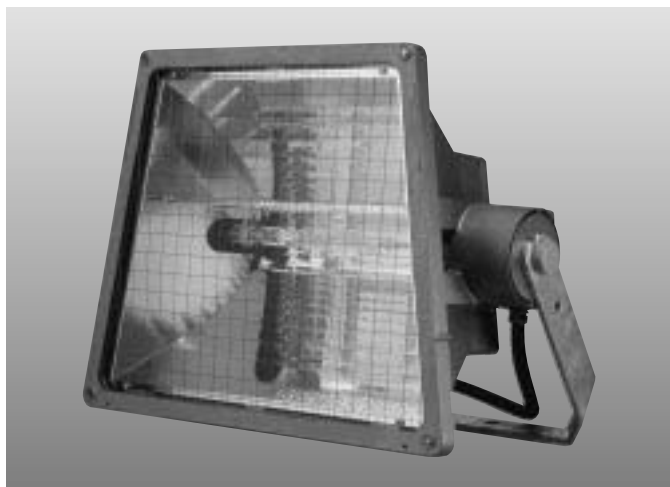


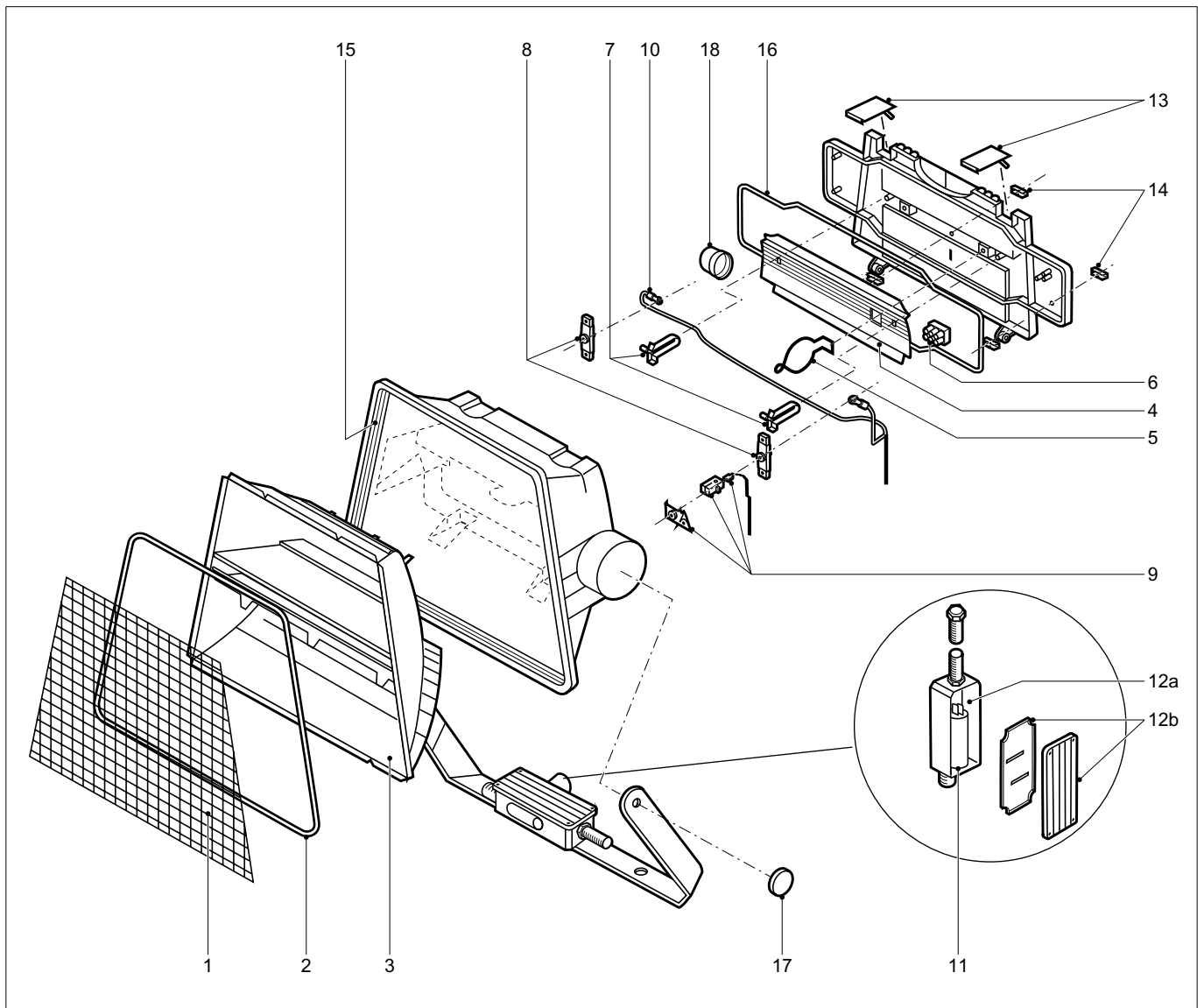
Field Service Manual Aquila (Mazda)



Aquila (Mazda)

This is the service manual of the
above mentioned luminaires.

Field Service Manual Aquila (Mazda)



Field Service Manual

Aquila (Mazda)

Item	Ordering number	1KW	2KW	Description
1	5322 466 10911	-	X	Safety net
2	5322 450 62383	X	-	Frontglass (without gasket)
2	5322 450 62385	-	X	Frontglass (including gasket + 4 spacer) ²⁾
3	5322 380 10111	X	-	Reflector assy semi intensive
3	5322 380 10112	-	X	Reflector assy semi intensive
3	5322 380 10113	X	-	Reflector assy extensive
3	5322 380 10114	-	X	Reflector assy extensive
4	5322 380 20531	X	-	Rear reflector semi intensive
4	5322 380 20532	-	X	Rear reflector semi intensive
4	5322 380 20533	X	-	Rear reflector extensive
4	5322 380 20534	-	X	Rear reflector extensive
5	5322 492 64303	X	-	Lamp support
6	5322 290 64163	X	-	Terminalblock
7	5322 405 91807	-	X	Lamp support set ³⁾
8	9965 000 04782	-	X	Lamp connection assy ⁴⁾
9	5322 405 91804	-	X	Safety switch assy
10	5322 321 63207	-	X	Teflon wiring set for lamp
11	5322 219 82687	-	X	Serie ignitor mono
12a	5322 447 92405	-	X	Connection box without ignitor (no cover)
12b	5322 447 92403	-	X	Cover connection box + sealing
13	5322 492 70168	X	X	Clip assy
14	5322 405 91808	X	X	U-shape bracket for hinge
15	5322 466 61537	X	-	Gasket frontglass L = 1,840 m ¹⁾
16	5322 466 61537	X	X	Gasket rear housing L = 1,460 m ¹⁾
17	5322 462 10672	X	X	Orange caps
18	5322 255 10239	X	-	Lampholder E 40 mono

¹⁾ Gaskets are supplied per metre length. When ordering always state the required length in metres as stated above.

²⁾ See the next page for more information.

³⁾ Set = left + right.

⁴⁾ Single connector.

Field Service Manual Aquila (Mazda)

3222 609 26711
09/05
Data subject to change

Instruction to replace glass shield Aquila 2kW

