

Service Manual

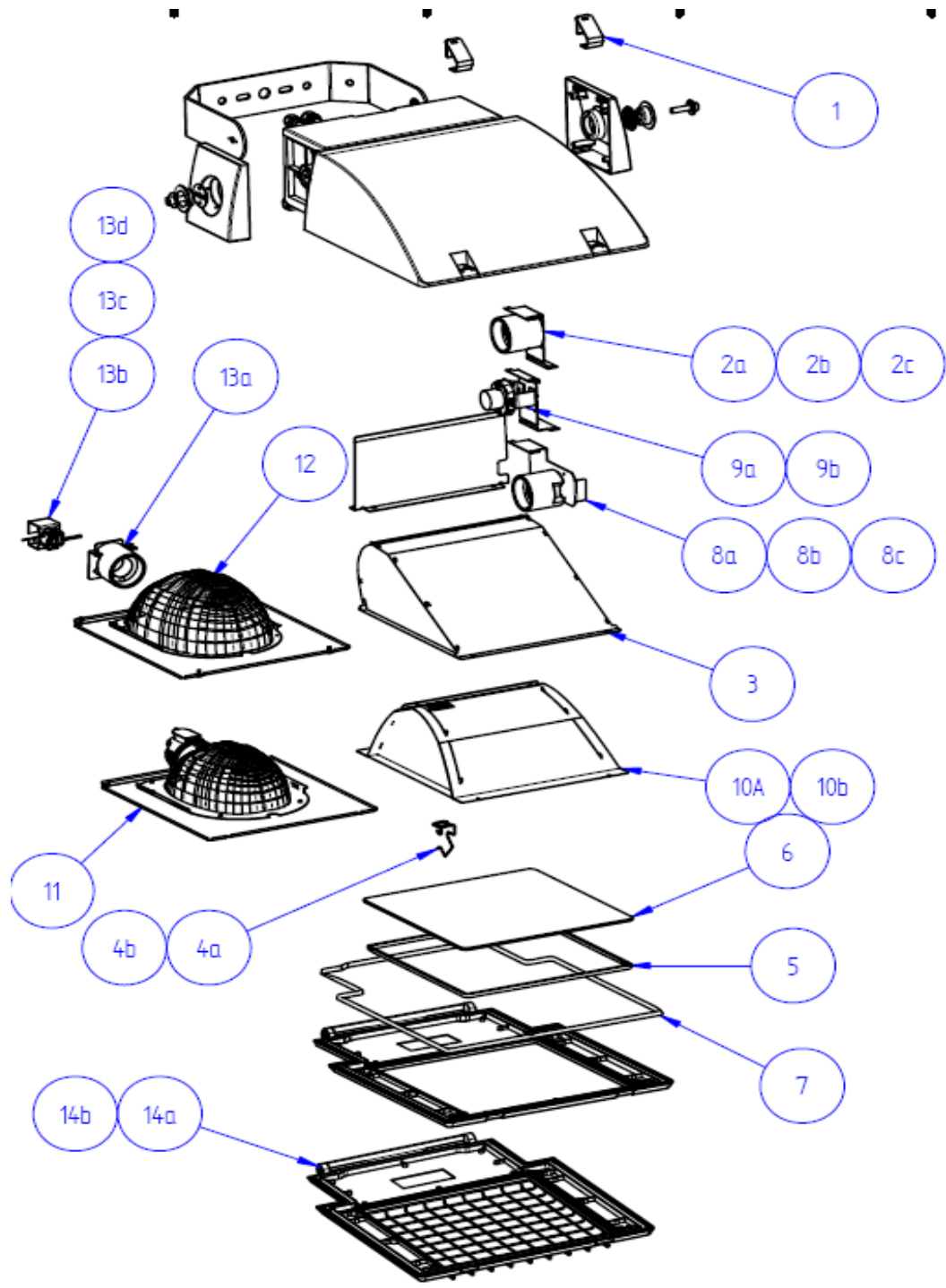
MVP506

OptiFlood



[Back to
Index](#)

PHILIPS



Number	Service 12nc	Description
1	996500027804	MVP506 CLOSING CLIP
2a	996500027798	MVP506 LAMPHOLDER ASSY 150W
2b	996500027799	MVP506 LAMPHOLDER ASSY 250W
2c	996500027807	MVP506 LAMPHOLDER ASSY 400W
3	996500027803	MVP506 REFLECTOR ASSY
4a	996500027805	MVP506 LAMP SUPPORT 150W
4b	996500027806	MVP506 LAMP SUPPORT 250/400W
5	996500027801	MVP506 SEAL (glass plate)
6	992200110964	MVP506 FRONTGLASS
7	996500027802	MVP506 SEAL (frame)
8a	992200110557	MVP506 LAMPHOLDER ASSY 150W A25
8b	992200110558	MVP506 LAMPHOLDER ASSY 250W A25
8c	992200110559	MVP506 LAMPHOLDER ASSY 400W A25
9a	992200110560	MVP506 LAMPHOLDER ASSY 210/315W A25
9b	992200110561	MVP506 LAMPHOLDER ASSY 210/315W A60
10a	992200110562	MVP506 A25-NB REFLECTOR
10b	992200110563	MVP506 A25-WB REFLECTOR
11	992200110564	MVP506 CO REFLECTOR
12	992200110565	MVP506 OR REFLECTOR
13a	992200110566	MVP506 LAMPHOLDER ASSY E40 OR
13b	992200110567	MVP506 LAMPHOLDER ASSY CDM-T 150W OR
13c	992200110568	MVP506 LAMPHOLDER ASSY CDM-T 250W OR
13d	992200110569	MVP506 LAMPHOLDER ASSY 210/315W OR
14a	992200110570	MVP506 COVER & WIREGARD
14b	992200110571	MVP506 COVER & WIREGARD 10714 (Philips Dark Grey)

[Back to
Index](#)

Data subject to change

Ballast and ignitor info MVP506

SON 600W - Class 1 Versions

Ballast

000913700249226 BSN 600 L407-ITS 230/240V 50Hz BC3-166

Ignitor

000913700134900 SN 58T15 220-240V 50/60Hz/

SON/HPI 400W - Class 1 Versions

Ballast

000913700277827 BSN 400 K407-ITS 230/240V 50Hz BC3-166

Ignitor

000913700655466 SKD 578-S 220-240V 50/60Hz

SON/CDO/CDM/HPI 250W - Class 1 Versions

Ballast

000913700277727 BSN 250 K427-ITS 230/240V 50Hz BC2-160

Ignitor

000913700655466 SKD 578-S 220-240V 50/60Hz

SON/CDO/CDM 150W - Class 1 Versions

Ballast

000913700277527 BSN 150 K427-ITS 230/240V 50Hz BC2-134

Ignitor

000913700655466 SKD 578-S 220-240V 50/60Hz

SON/HPI 400W - Class 2 Versions

Ballast

000913700269027 BSN 400 L307-TS-R 230/240V 50Hz BC3-166

Ignitor

000242254945726 IG1 SON100-400 230 SD ZRM 4.5 ES TC

SON/CDO/CDM/HPI 250W - Class 2 Versions

Ballast

000913700269700 CB4 SON250 230-240 RI BSN250L327 TS R

Ignitor

000242254945726 IG1 SON100-400 230 SD ZRM 4.5 ES TC

SON/CDO/CDM 150W - Class 2 Versions

Ballast

000913700269627 BSN 150 L327-TS-R 230/240V 50Hz BC2-134

Ignitor

000242254945726 IG1 SON100-400 230 SD ZRM 4.5 ES TC

[Back to
Index](#)