

BALASTRO ELECTRÓNICO 4x54 W T5 120 V -277V

Encendido Rápido Programado

Circuito Serie

NI586, ICN4S5490C2LSG73M

| Tipo de lámpara | No. de lámparas | Watt lámparas | Temp. de arranque (°F/°C) | Volts | Corriente de línea (A rcm) | Potencia de línea (Watt) | THD (Máx.) | Factor de Potencia |
|-----------------|-----------------|---------------|---------------------------|---------|-----------------------------|---------------------------|------------|--------------------|
| FT36W/2G11 | 1 | 36 | 0/-18 | 120-277 | 0.39/0.18 A | 46 | 20 | 0.97/0.95 |
| FT36W/2G11 | 2 | 36 | 0/-18 | 120-277 | 0.74/0.33 A | 88 | 20 | 0.95 |
| FT36W/2G11 | 3 | 36 | 0/-18 | 120-277 | 1.11/0.49 A | 133/132 | 10 | 0.98 |
| FT36W/2G11 | 4 | 36 | 0/-18 | 120-277 | 1.47/0.25 A | 176/173 | 10 | 0.98 |
| FT50W/2G11 | 1 | 50 | 0/-18 | 120-277 | 0.51/0.25 A | 61 | 15/30 | 0.98/0.90 |
| FT50W/2G11 | 2 | 50 | 0/-18 | 120-277 | 0.98/0.43 A | 117/116 | 10 | 0.98 |
| FT50W/2G11 | 3 | 50 | 0/-18 | 120-277 | 1.49/0.65 A | 178/175 | 10 | 0.98 |
| FT50W/2G11 | 4 | 50 | 0/-18 | 120-277 | 1.96/0.84A | 235/230 | 10 | 0.98 |
| F54T5/HO | 1 | 54 | 0/-18 | 120-277 | 0.52/0.24 A | 62 | 15/30 | 0.98/0.90 |
| F54T5/HO | 2 | 54 | 0/-18 | 120-277 | 0.99/0.43 A | 118/117 | 10 | 0.98 |
| F54T5/HO | 3 | 54 | 0/-18 | 120-277 | 1.52/0.66 A | 182/173 | 10 | 0.98 |
| F54T5/HO | 4 | 54 | 0/-18 | 120-277 | 2.00/0.86 A | 240/234 | 10 | 0.98 |
| FT55W/2G11 | 1 | 55 | 0/-18 | 120-277 | 0.49/0.23 A | 58 | 15/30 | 0.98/0.90 |
| FT55W/2G11 | 2 | 55 | 0/-18 | 120-277 | 0.93/0.41 A | 111 | 10 | 0.97 |
| FT55W/2G11 | 3 | 55 | 0/-18 | 120-277 | 1.41/0.61 A | 169 | 10 | 0.98 |
| FT55W/2G11 | 4 | 55 | 0/-18 | 120-277 | 1.86/0.80 A | 222/217 | 10 | 0.98 |
| F58/T8 | 1 | 58 | 0/-18 | 120-277 | 0.49/0.23 A | 58 | 15/30 | 0.98/0.90 |
| F58/T8 | 2 | 58 | 0/-18 | 120-277 | 0.92/0.41 A | 110 | 10 | 0.98 |
| F58/T8 | 3 | 58 | 0/-18 | 120-277 | 1.43/0.62 A | 171/168 | 10 | 0.98 |
| F58/T8 | 4 | 58 | 0/-18 | 120-277 | 1.88/0.81 A | 225/220 | 10 | 0.98 |

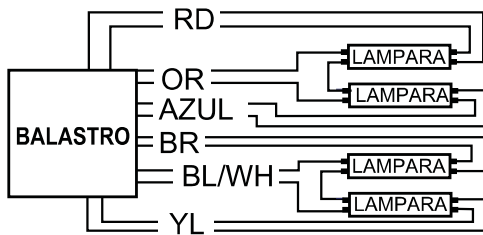
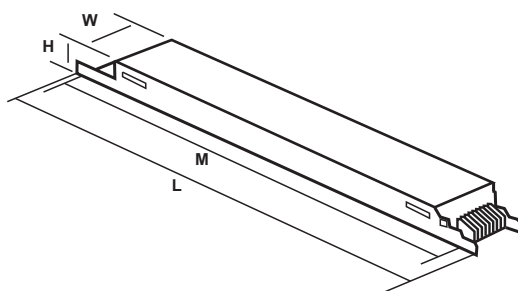


DIAGRAMA DE CONEXIÓN

RD=ROJO
OR = NARANJA BR=CAFE
YL=AMARILLO BL/WH=AZUL/BLANCO



| Longitud (L) | Ancho (W) | Alto (H) | Montaje (M) |
|--------------|-----------|----------|-------------|
|--------------|-----------|----------|-------------|

| | | | |
|----------|--------|--------|---------|
| 42.40 cm | 3.0 cm | 2.5 cm | 41.5 cm |
|----------|--------|--------|---------|

| | | | |
|-------|-------|-------|--------|
| 16.7" | 1.18" | 1.00" | 16.34" |
|-------|-------|-------|--------|

NOM

Philips Lighting Electronics North America - Mexico
Av. de la Palma, No. 6 Piso 2 Col. San Fernando, La Herradura, C.P. 52760, Huixquilucan, Edo. de México
Tel: 5269-9316, Fax: 5269-9032
lumisistemas@philips.com

www.lumisistemas.com

**PHILIPS
ADVANCE**