

LP550

EMERGENCY LIGHTING EQUIPMENT

PHILIPS bodine

A Division Of Philips Electronics North America Corporation

**Low-profile for
standard and high-output
T5 and T8 lamps
End-of-lamp-life compatible**

Product Summary

UL LISTED

Factory or Field Installation
(Indoor and Damp)



Illumination Time

90 Minutes

Initial Light Output

390 - 700 Lumens @ 25°C

Full Warranty

5 Years (NOT pro-rata)

Dual Input Voltage

120/277 VAC, 60 Hz

AC Input Current

190 mA

AC Input Power Rating

2.6 Watts

Test Switch

Single Pole

Battery

High-Temperature, Maintenance-Free
Nickel-Cadmium Battery
7- to 10-Year Life Expectancy

Battery Charging Current

165 mA

Recharge Time

24 Hours

Charging Indicator Light

LED

Temperature Rating (Ambient)

0°C to +50°C
(32°F to 122°F)

Dimensions

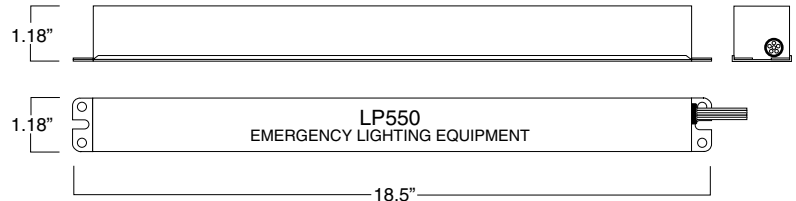
18.5" x 1.18" x 1.18"
(470 mm x 30 mm x 30 mm)
Mounting Center 18.1" (460 mm)

Weight

2.3 lbs. (1.0 kg)

Product Features

Low-Profile Design for Ballast
Channel Installation in Space-Limited Fixtures.
Damp-Rated, Suitable for Sealed & Gasketed Fixtures.



APPLICATION

The LP550 low-profile emergency ballast works in conjunction with a low-profile or standard-size AC ballast to convert new or existing standard or high-output T5 fluorescent fixtures into unobtrusive emergency lighting. The emergency ballast consists of a high-temperature nickel-cadmium battery, charger and electronic circuitry in one compact case. The LP550 can be used with one 14 - 28 W standard or 24 - 54 W high-output T5 (2'-4'); one 32 W (4'), 40 W (5') or 44 W HO (4') T8; or one 36 - 55 W (4-pin) long compact fluorescent lamp (see Table 1). It is also compatible with most one-, two-, three- and four-lamp electronic, standard, energy-saving and dimming AC ballasts. If used in an emergency-only fixture, no AC ballast is necessary. The LP550 is suitable for indoor and damp locations and for sealed and gasketed fixtures, including fixtures rated for wet locations. It is not suitable for air handling heated air outlets or wet or hazardous locations. For information about specific lamp and ballast compatibility, please call the factory. Recommended applications include: emergency lighting for pendant, cove, recessed indirect/direct, surface-mount and architectural lighting commonly used in office, hospitality, health care, retail and educational facilities.

OPERATION

When AC power fails, the LP550 immediately switches to the emergency mode, operating one lamp at a reduced lumen output for a minimum of 90 minutes. When AC power is restored, the emergency ballast automatically returns to the charging mode and, using a patented circuit, delays AC ballast operation for approximately three seconds to prevent false tripping of the AC ballast end-of-lamp-life shutdown circuits.

INSTALLATION

The LP550 does not affect normal fixture operation and may be used with either a switched or unswitched fixture. If a switched fixture is used, an unswitched hot must be connected to the emergency ballast. The emergency ballast must be fed from the same branch circuit as the AC ballast. The LP550 may be installed inside or on top of the fixture. Installation is not recommended with fixtures where the ambient temperature may fall below 0°C.

UL and CODE COMPLIANCE

The LP550 has been tested by Underwriters Laboratories in accordance with the standards set forth in UL 924, "Emergency Lighting and Power Equipment," and is UL Listed for factory or field installation. Emergency illumination time exceeds the National Electrical Code (NEC), Life Safety Code (NFPA-LSC) and UL 90-minute requirements.

Emergency ballasts can be modified to accommodate special voltages, frequencies and longer run times.

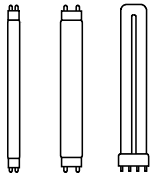
Specifiers Reference

Project _____ Type _____ Model No. _____

Comments _____

L2000554

04/06/11 © Philips Emergency Lighting
P.O. Box 460 Collierville, TN USA 38027-0460
Sales 800-223-5728 FAX 901-853-5009
Tech. Support 888-263-4638
www.philips.com/bodine



LP550

EMERGENCY LIGHTING EQUIPMENT

**Low-profile for
standard and high-output
T5 and T8 lamps
End-of-lamp-life compatible**

EMERGENCY ILLUMINATION

Depending on the wattage and type of lamp selected, the LP550 produces 390 to 700 lumens initial emergency light output (see Table 2). During emergency operation, one lamp is illuminated, even if installed with a multi-lamp AC ballast.

SPECIFICATION

Emergency lighting shall be provided by using a standard fluorescent fixture equipped with a Philips Bodine LP550 low-profile emergency ballast. The LP550 shall consist of a high-temperature, maintenance-free nickel-cadmium battery, charger and electronic circuitry contained in one 18.5" x 1.18" x 1.18" galvanized steel case. A solid-state charging indicator light to monitor the charger and battery, a single-pole test switch and installation hardware shall be provided. The emergency ballast, using a patented circuit, shall delay AC ballast operation for approximately three seconds to prevent false tripping of AC ballast end-of-lamp-life shutdown circuits. The emergency ballast shall be capable of operating one _____ fluorescent lamp at _____ lumens (see Table 2) initial light output in the emergency mode for a minimum of 90 minutes. It shall be suitable for indoor and damp locations and for sealed and gasketed fixtures, including fixtures rated for wet locations. The LP550 shall have 2.6 Watts of input power and a 13.2 Watt-hour battery capacity and shall exceed emergency standards set forth by the current NEC. The emergency ballast shall be UL Listed for installation inside or on top of the fixture and shall be warranted for a full five years from date of purchase.

WARRANTY

Model LP550 is warranted for five (5) full years from date of purchase. This warranty covers only properly installed Philips Bodine emergency ballasts used under normal conditions. For the warranty period, Philips Emergency Lighting will, at its option, repair or replace without charge a defective emergency ballast, provided it is returned to the factory transportation prepaid and our inspection determines it to be defective under terms of the warranty. Repair or replacement, as stated above, shall constitute the purchaser's exclusive warranty, which does not extend to transportation, installation, labor or any other charges; nor does it apply to any equipment of another manufacturer used in conjunction with the emergency ballast.

Table 1 - Lamp Compatibility

LAMP DIAMETER	BASE	WATTAGE (Length)	NO. of LAMPS (EMERGENCY)
T5/HO	Miniature Bipin	24-54 W (2'-4')	1
T5	Miniature Bipin	14-28 W (2'-4')	1
Long Compact	4-pin (2G11)	36-55 W	1
T8	Bipin	32 W (4')	1
		40 W (5')	1
T8/HO	Bipin	44 W (4')	1

Table 2 - Initial Lumen Output

LAMP	LUMENS
	1 Lamp
FP54, F54T5/HO	700
FP39, F39T5/HO	620
FP24, F24T5/HO	390
FP28, F28T5	700
FP21, F21T5	620
FP14, F14T5	430
F32T8, (4')	635
F40T8 (5')	570
F40T8/HO (4', 44 W)	470
PL-L 50W, F50BX/RS, Dulux L 55W	510
PL-L 40W, F40/30BX, Dulux L 40W	625
PL-L 36W, F39/36BX, Dulux L 36W	610

Partial listing of lamps operated.

L2000554

04/06/11 © Philips Emergency Lighting
P.O. Box 460 Collierville, TN USA 38027-0460
Sales 800-223-5728 FAX 901-853-5009
Tech. Support 888-263-4638
www.philips.com/bodine

For the most current technical information and notices, please visit TechNotes on our website.