

Technical Application Guide

Philips is now introducing a new line of connected LED lighting products. Philips MasterConnect LEDtube, which is Interact Ready, enables an easy upgrade to a connected lighting system. The 2.4GHz mesh networking technology allows integration with a variety of control devices, such as sensor and switch, and offers secure and reliable communication towards the Interact IoT platform. The result? Great energy savings, various control possibilities and a more adaptable space!



interact
ready.

Product Features

Ballast Compatibility

- Compatible with electro-magnetic ballast or direct mains.
- Quick and easy installation.

Mechanical Design

- Rotatable end-cap up to 90 deg.
- IEC T8 dimension, perfect fit into existing fluorescent luminaires.

Connectivity

- 2.4GHz mesh networking technology.
- Reliable and secure wireless communication, nominal range 12m.
- Easy commissioning and (re-) configuration from the floor.

Control Functionality

- Automatic on/off, dimming based on occupancy detection and daylight variation.
- Personal dimming and scene setting with wireless switch.
- High-end trimming to fit various application needs.

Energy Savings

- Energy savings of 50% or more* compared to fluorescent lamps.
- Additional 20-40% energy saving when used with advanced control, such as dimming, occupancy sensing and daylight harvesting.
- Energy label A++.

User comfort

- Uniform light output and superior optical efficiency with advanced optical design.
- Personal light setting to enhance user comfort and productivity.
- Typical CRI 83.

Reliability

- Reliable operation between -20°C and +45°C ambient temperature.
- Tested to B50 L70 requirement. Lamps are rated for 50,000 hours.
- 200,000 switching cycles.

Safety

- Over voltage and over temperature protection.
- Complies with IEC safety requirements.
- Misuse protected. Passed 4kV high-pot test and 1kV surge test.

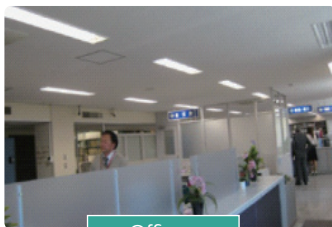
Environment

- No Mercury.
- No breakage and pollution risk.

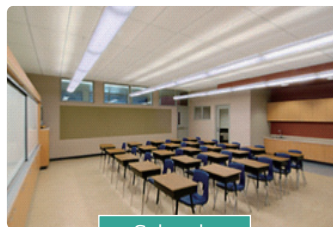
* Compared to 1 x 36W/58W TL system with Philips reference ballast. Lamps are set at 100% light level.



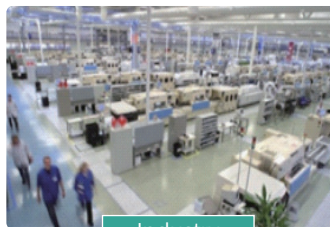
Application



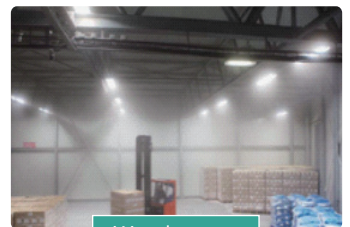
Offices



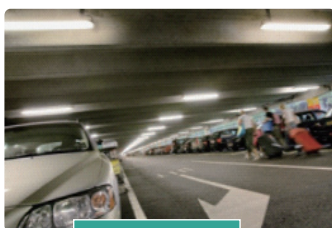
Schools



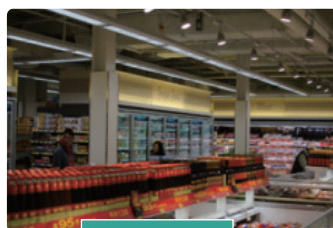
Industry



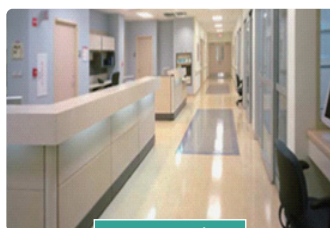
Warehouses



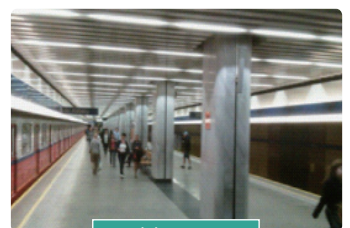
Parking Lots



Retail



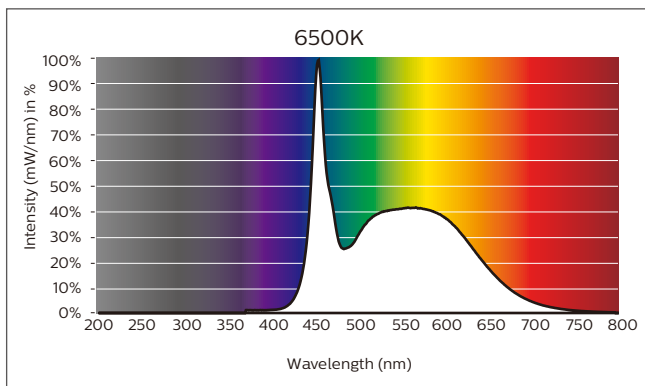
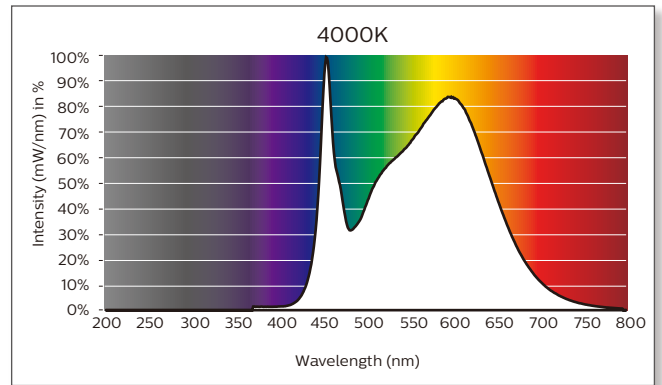
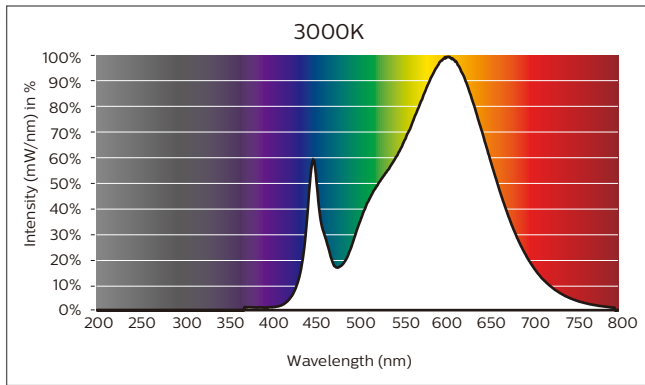
Hospitals



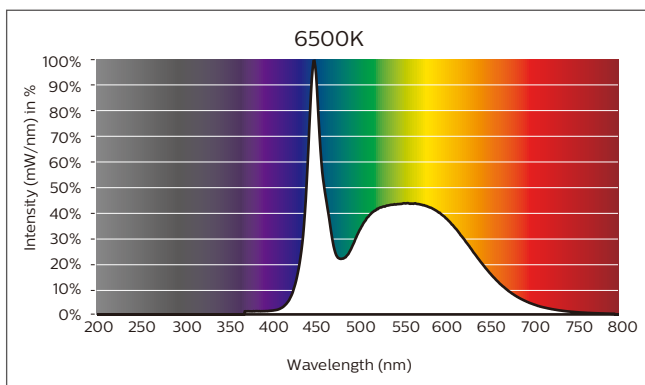
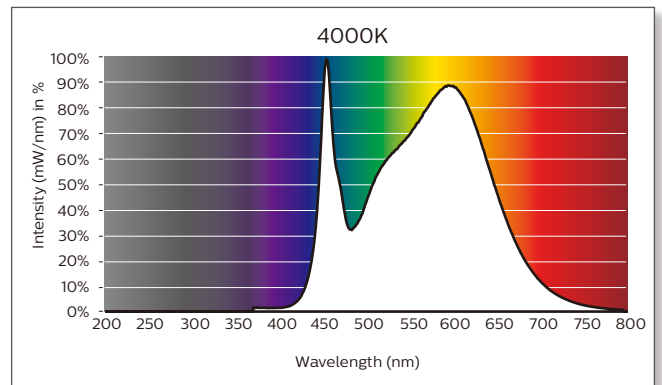
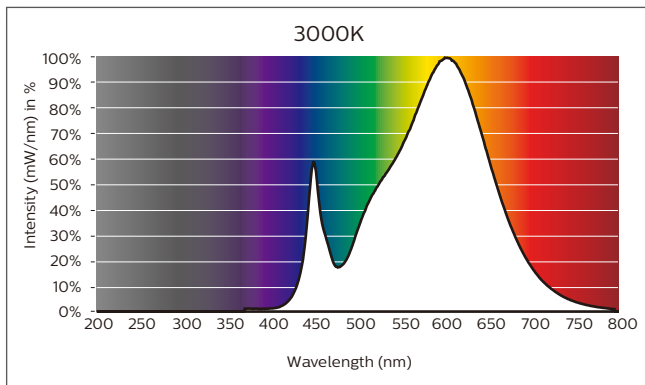
Public Areas

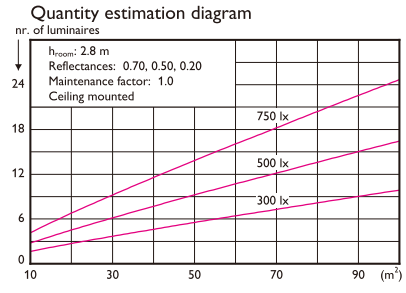
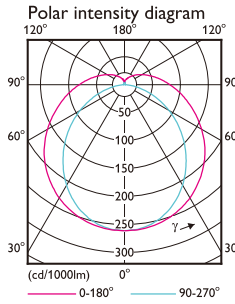
Spectral Power Distribution

1200mm



1500mm





Utilisation factor table

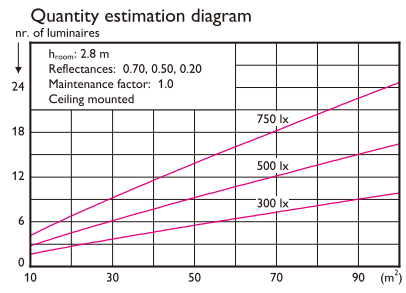
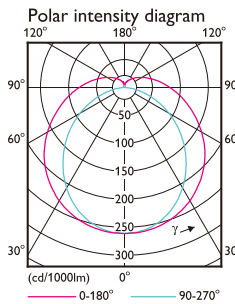
Room Index k	Reflectances (%) for ceiling, walls and working plane (CIE)										
	0.80	0.80	0.70	0.70	0.70	0.70	0.50	0.50	0.30	0.30	0.00
0.60	0.44	0.41	0.42	0.41	0.40	0.33	0.32	0.27	0.30	0.26	0.23
0.80	0.53	0.50	0.52	0.50	0.49	0.41	0.39	0.34	0.37	0.33	0.29
1.00	0.62	0.57	0.59	0.57	0.55	0.48	0.46	0.40	0.43	0.39	0.35
1.25	0.70	0.64	0.67	0.64	0.62	0.54	0.52	0.47	0.49	0.45	0.41
1.50	0.76	0.69	0.73	0.70	0.67	0.60	0.57	0.52	0.54	0.50	0.45
2.00	0.85	0.76	0.82	0.78	0.74	0.68	0.64	0.60	0.61	0.57	0.52
2.50	0.92	0.81	0.88	0.83	0.79	0.73	0.69	0.65	0.66	0.63	0.57
3.00	0.96	0.84	0.92	0.87	0.82	0.77	0.73	0.69	0.70	0.66	0.61
4.00	1.03	0.89	0.98	0.92	0.86	0.82	0.78	0.75	0.74	0.71	0.66
5.00	1.07	0.92	1.02	0.95	0.89	0.85	0.81	0.78	0.77	0.75	0.69

Ceiling mounted

Luminance Table

Plane Cctm	0.0	15.0	30.0	45.0	60.0	75.0	90.0
45.0	12487	12421	12490	12794	13520	15110	19541
50.0	11721	11647	11661	11877	12487	13987	17656
55.0	10958	10890	10880	11001	11475	12814	16672
60.0	10235	10160	10131	10156	10474	11593	15573
65.0	9547	9488	9415	9374	9506	10344	14315
70.0	8911	8837	8789	8689	8635	9062	12882
75.0	8368	8283	8235	8080	7864	7741	11102
80.0	7889	7796	7751	7551	7175	6444	8656
85.0	7466	7420	7303	7122	6635	5293	5183
90.0	7112	7077	7025	6822	6264	4583	2730

(cd/m²)



Utilisation factor table

Room Index k	Reflectances (%) for ceiling, walls and working plane (CIE)										
	0.80	0.80	0.70	0.70	0.70	0.70	0.50	0.50	0.30	0.30	0.00
0.60	0.44	0.41	0.42	0.41	0.40	0.33	0.32	0.27	0.30	0.26	0.23
0.80	0.53	0.50	0.52	0.50	0.49	0.41	0.39	0.34	0.37	0.33	0.29
1.00	0.62	0.57	0.59	0.57	0.55	0.48	0.46	0.40	0.43	0.39	0.35
1.25	0.70	0.64	0.67	0.64	0.62	0.54	0.52	0.47	0.49	0.45	0.41
1.50	0.76	0.69	0.73	0.70	0.67	0.60	0.57	0.52	0.54	0.50	0.45
2.00	0.85	0.76	0.82	0.78	0.74	0.68	0.64	0.60	0.61	0.57	0.52
2.50	0.92	0.81	0.88	0.83	0.79	0.73	0.69	0.65	0.66	0.63	0.57
3.00	0.96	0.84	0.92	0.87	0.82	0.77	0.73	0.69	0.70	0.66	0.61
4.00	1.03	0.89	0.98	0.92	0.86	0.82	0.78	0.75	0.74	0.71	0.66
5.00	1.07	0.92	1.02	0.95	0.89	0.85	0.81	0.78	0.77	0.75	0.69

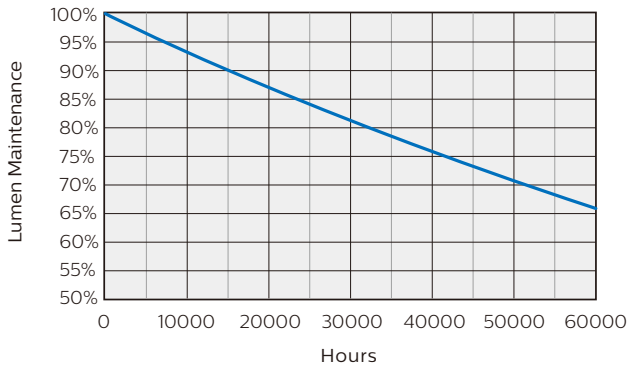
Ceiling mounted

Luminance Table

Plane Cctm	0.0	15.0	30.0	45.0	60.0	75.0	90.0
45.0	12487	12421	12490	12794	13520	15110	19541
50.0	11721	11647	11661	11877	12487	13987	17656
55.0	10958	10890	10880	11001	11475	12814	16672
60.0	10235	10160	10131	10156	10474	11593	15573
65.0	9547	9488	9415	9374	9506	10344	14315
70.0	8911	8837	8789	8689	8635	9062	12882
75.0	8368	8283	8235	8080	7864	7741	11102
80.0	7889	7796	7751	7551	7175	6444	8656
85.0	7466	7420	7303	7122	6635	5293	5183
90.0	7112	7077	7025	6822	6264	4583	2730

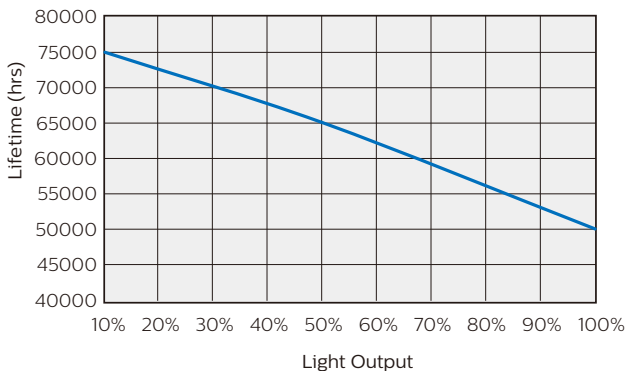
(cd/m²)

Lifetime and Lumen Maintenance



Philips MasterConnect LEDtube EM/Mains T8 has a lifetime of 50,000 hours. This is defined as the number of hours when 50% of a large group of identical lamps drop below 70% of its initial lumen.

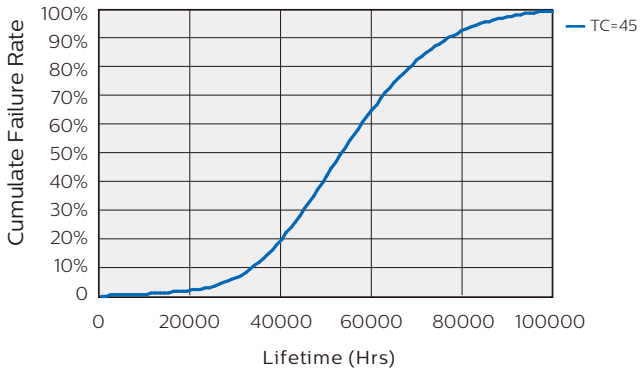
Lifetime and Dimming



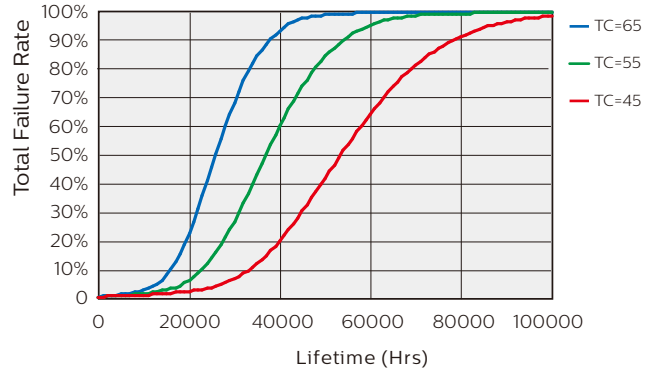
Dimming can help extend lifetime (ie: dimming 30% can extend lifetime by 9,000hrs)

Lifetime and Failure Rate

Lifetime vs. Failure rate @Ta 25°C

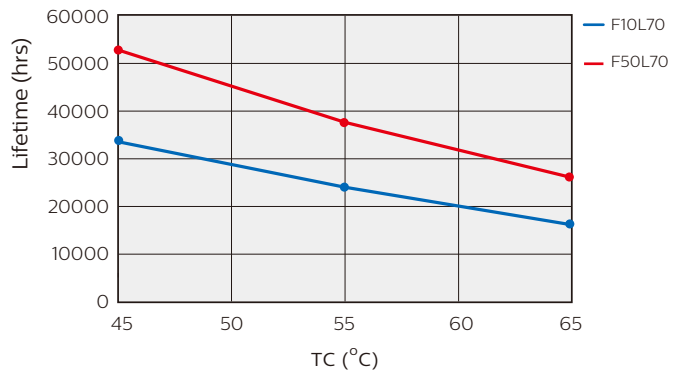
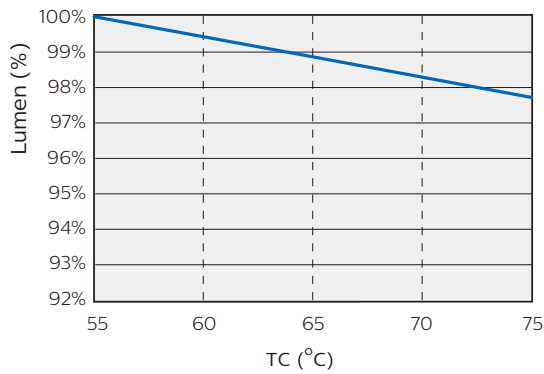


Lifetime vs. Failure Rate vs. Tcase

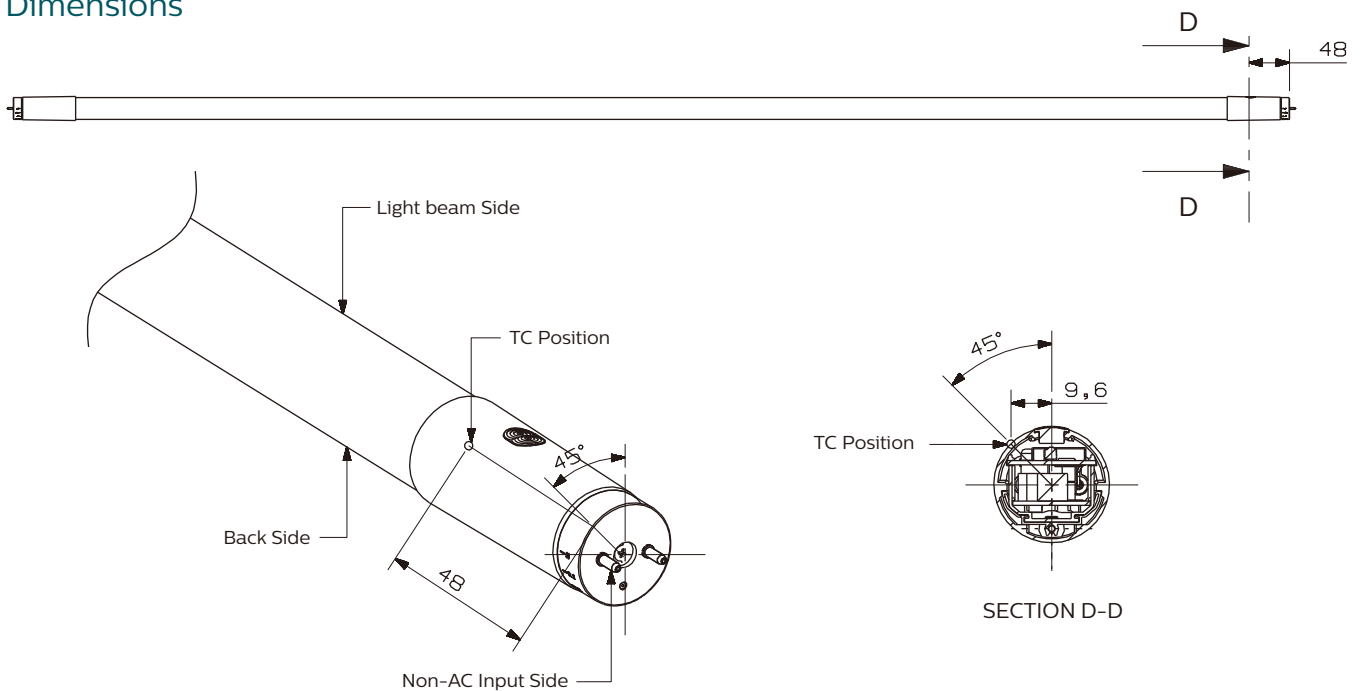


Temperature

Operating temperature	Toperating	min -20°C	max +45°C
Storage temperature	Tstorage	min -40°C	max +65°C

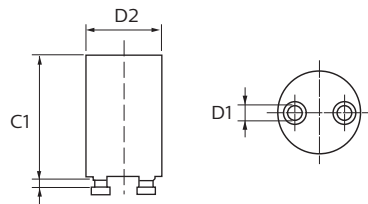


Dimensions



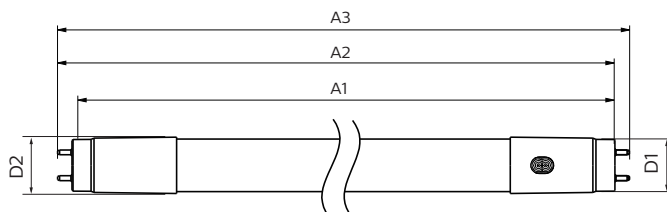


EMP



Dimensions (mm)

Product	A1	A2	A3	C1	D1	D2
1200mm	1198.1	1205.2	1212.3	-	25.6	27.8
1500mm	1498.7	1505.8	1512.9	-	25.6	27.8
EMP	-	-	-	34.5	3.0	21.5



Technical Specification

Product Number	Product Description	Lamp Wattage	Equivalent Fluo Wattage	Voltage	Lumen Output Typical	Cap	CRI Typical*	Color Temp.	Lifetime	Beam Angle	Length	Stand-by power	RF range
		(W)	(W)	(V)	(lm)			(K)	(hrs)	(°)	(mm)	(W)	(m)
9290018137	MAScon LEDtube IA 1200mm UO 16.5W830 T8	16.5	36	220-240	2300	G13	83	3000	50000	160	1200	≤ 0.6	12
9290018138	MAScon LEDtube IA 1200mm UO 16.5W840 T8	16.5	36	220-240	2500	G13	83	4000	50000	160	1200	≤ 0.6	12
9290018139	MAScon LEDtube IA 1200mm UO 16.5W865 T8	16.5	36	220-240	2500	G13	83	6500	50000	160	1200	≤ 0.6	12
9290018140	MAScon LEDtube IA 1500mm UO 25.5W830 T8	25.5	58	220-240	3400	G13	83	3000	50000	160	1500	≤ 0.6	12
9290018141	MAScon LEDtube IA 1500mm UO 25.5W840 T8	25.5	58	220-240	3700	G13	83	4000	50000	160	1500	≤ 0.6	12
9290018142	MAScon LEDtube IA 1500mm UO 25.5W865 T8	25.5	58	220-240	3700	G13	83	6500	50000	160	1500	≤ 0.6	12

* Minimum CRI is 80.

Approbation & Certificates

Philips MasterConnect LEDtube EM/Mains T8 strictly follows applicable legislation and standard. The product complies with **CE, KEMA, TUV, RoHS** and **REACH**.

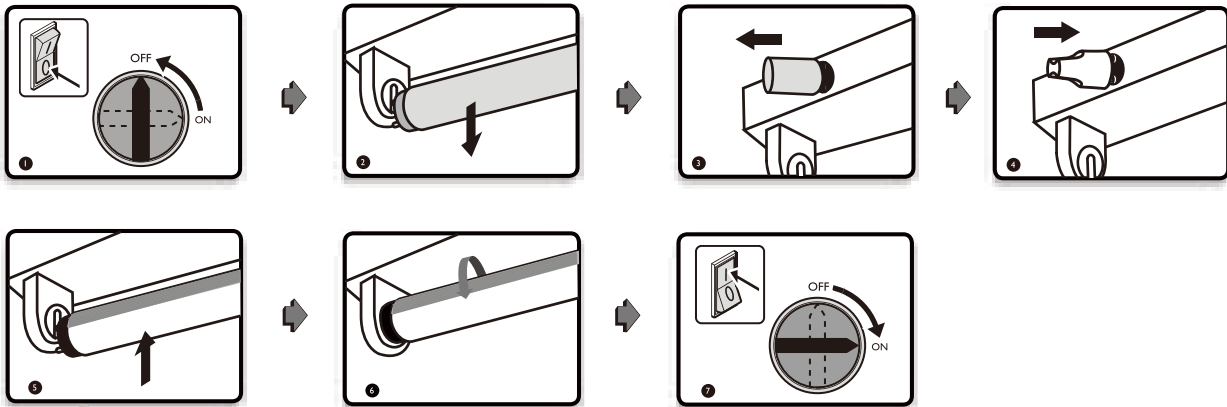


Application Notes

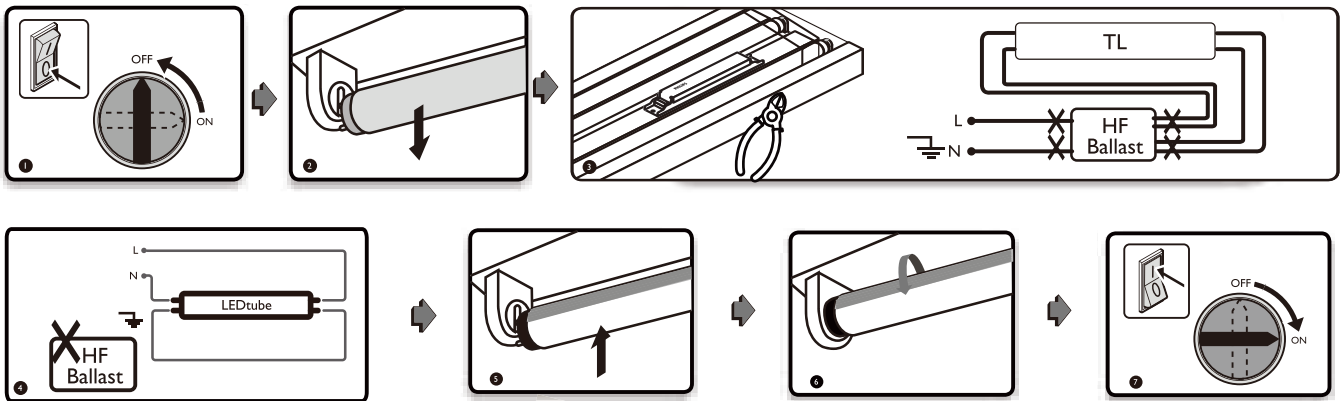
- Product is dimmable by wireless control
- Suitable for damp locations
- Reliable operation between -20 °C to + 45 °C ambient temperature
- Not intended for use in emergency luminaires
- Modifications to the product void the limited warranty. For warranty information, please see www.lighting.philips.com
- You are required to read and understand the Quick Installation Guide and all warnings, cautions and other materials related to installation before commencing installation work.

Installation Guide

• EM ballast based system



• HF ballast based system



© 2018 Philips Lighting

All rights reserved. Reproduction in whole or in part is prohibited without the prior written consent of the copyright owner. The information presented in this document does not form part of any quotation or contract, is believed to be accurate and reliable and may be changed without notice. No liability will be accepted by the publisher for any consequence of its use. Publication thereof does not convey nor imply any license under patent or other industrial or intellectual property rights.

05/2018
www.philips.com