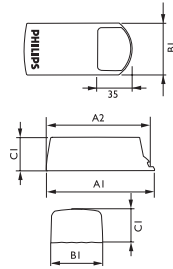


ET-S Halogen Transformer

A high frequency electronic transformer for operation with 12 volt halogen lamps. The ET-Standard transformer is uniquely compact and lightweight. It is also dimmable with approved leading and trailing edge dimmers. A range of benefits include short-circuit protection in the event of lamp failure, temperature protection, constant output voltage, and operates at a whisper (30dB).

Wire cross section on mains and lamp sides of terminals is 0.5 to 2.5mm². Distance between lamp and transformer; minimum 20cm, maximum 2m. Distance from other transformers must be more than 25cm.



Product ID	A1	A2	B1	C1
ET-S 60	105	110	52	33.5
ET-S 105	110	-	45	33

Dimensions in mm

ET-S Halogen Transformer

Shortcode	Description	Wattage (W)	Voltage	Min Order Quantity	Carton Qty
ETS60	ET-S 60 220-240V 20-60VA	20-150	220-240V	1	50
ETS105	ET-S 105 230-240V 50/60HZ	50-105	230-240V	1	50