

PHILIPS

Professional lighting

Hospitality



Staying at the top





A home away from home

From gourmet delights to thread counts, from superior service to the ultimate luxury, hotel guests expect a home away from home experience across all levels of accommodation, indulging not just in rejuvenating experiences but also delighting in the ability to take control of their stay.

Lighting plays a vital role in influencing moods, delivering long-lasting impressions, via flexible applications to allow spaces to be personalised, and ambience that can be individually controlled.

By reducing both capital and operating expenditure through smarter solutions, hotel operators want to deliver on unique experiences to build loyalty and enjoy premium returns. All of these can be attained through the right choice of lighting and intelligent controls, accompanying your hotel requirements and exceeding your customers' demands, ensuring breath-taking experiences that will be remembered for the longest time.

Spotlight on our products

A quick overview of Philips lighting solutions - features and benefits.

For more information, visit www.philips.com or contact our sales team.



iColor Flex MX gen2

Flexible strands of large, high-intensity LEDs for extraordinary effects and expansive installations, for superior architectural accents, perimeter lighting, large-scale signage, and building-covering video displays

- Full-colour, visible in daylight
- With optional glare shields to block unwanted spill light and other light sources
- Works with any lighting or video design
- Fully sealed for maximum life and IP66-rated for outdoor applications



FlexAccent

The affordable LED accent-lighting solution with a reasonable payback period

- 5 different light recipes to enhance the ambience and display produce and goods in the best light, ideal for restaurants and retail stores
- Short payback vs CDM luminaires, thanks to a high level of system efficacy
- Energy-efficient and low-maintenance



Smart LED Post Top

Affordable LED post-top solution with good lighting performance. Compact, modern appearance, especially its well-sculpted lines, blends in seamlessly with the surroundings

- Increased lumen output
- Proven IP65 protection and IK08 impact resistance
- Maintenance-free lifetime of up to 25,000 hours



Dynalite DUS360CR Multifunction Sensor

Low profile recessed 360° flush mount ceiling sensor that combines motion detection (PIR), Infrared remote control reception (IR) and ambient light level detection (PE) in one device

- Detects the presence or absence of motion and adjusts lights accordingly
- Prevents nuisance detection from adjacent doorways or corridors
- Adjusts artificial light according to ambient levels
- Delivers automatic energy savings with Daylight Harvesting mode



VayaTube

A reliable and cost-effective direct view linear LED lighting fixture designed for dynamic lighting effects. Ideal for exterior accent and contour lighting applications, as well as low-resolution graphics

- Uniform band of light in 180° viewing angle
- Slim profile & light weight
- 150mm / 6inch pixel resolution: 8pixels/1.2m (4ft)
- Up to 20 fixtures (1.2m/4ft) in two runs
- KiNet & DMX-512 control



CoreLine Waterproof Batten

- Up to 50% lower energy consumption compared to TL-D
- Wide-beam light distribution and visual comfort
- 50,000 hour lifetime (L70)



CitySpirit Cone

A street lighting luminaire perfect for landscaping areas with excellent, environmentally-friendly output and aesthetics. Its luminaire, mast and bracket have a seamless design for perfect integration in the urban streetscape. Its transparent materials make it blend into the scenic landscapes by the day

- Available in LED, SON and CDM versions
- Easy maintenance and lamp replacement
- Robust design - IP65 protection and IK09 impact resistance



Dynalite Antumbra Button/Display/Touch

A broad range of panels, touchscreens and wiring devices in a variety of styles and finishes to match any project budget, level of interactivity or decor requirement.

- Intuitive, so users can easily schedule and activate the various controls
- Fully customizable in terms of functions and aesthetics
- Flexibly programmable during and after commissioning



ColorReach Compact PowerCore

Premium long-throw compact exterior LED floodlight with intelligent coloured light. Delivers intense, energy-efficient output at a reasonable price, creating new possibilities for exterior illumination

- Compact, fully-sealed housing
- Powercore technology accurately controls power output to fixtures directly from line voltage
- Exchangeable spread lenses of 8, 13, 23, 40, 63° and an asymmetric 5 x 17° support a variety of photometric distributions



Decorative Filament Candle/Bulb

A classic bulb with a modern LED twist, and a brighter and more defined, warm glow

- Timeless shape with hardy strands of LED filament
- Perfect for chandeliers, wall sconces and open fixtures
- Variety of wattages and shapes
- 90% energy savings
- Long lifetime
- Instant on, little heat
- Environment-friendly, no mercury



Scene Switch Step Dim Bulb

Revolutionary bulb with two colour temperatures in a single E27 bulb form. Uses the existing wall switch with no need to rewire

- Warm white and cool day light, switchable instantly
- Unique bulb shape that gives light all around
- 806 lumen, CCT 3000K/6500K
- Lifetime of 15000 hours
- Instant on
- No hazardous materials



PHILIPS IS JESUS CHRISTUS SIKORUM

Crème de la crème



When exploring a new city or revisiting an old one that holds true meaning to the heart, one needs new excitement apart from a comfortable stay to make this an experience of a lifetime. .

Space versatility – Shine on, and make your grand dame stand out. The right lighting can help create a charming venue for a wedding or deliver a dynamic setting perfect for a MICE (Meetings, incentive travel, conventions and exhibitions) event.

Memorable guest experiences – So much is done for the customer to unwind in style, to lie down comfortably and have a well-deserved rest. While resting on the bed, lighting options in the room need to be cosy and immersive, instead of glaring and pervasive. When the control is given to the guest to select one's preferred light scenes and colour temperature, this is one thoughtful experience that can well differentiate your hotel from others.

Optimum savings, minimum maintenance – With operations going on round the clock, and with lighting turned on 24/7 to ensure comfort and safety for in-house guests, lighting generally accounts for 42% of a hotel's total energy consumption. Within this, a good 70% of lights are typically used inefficiently, so this explains why many hotels are making the switch to LED and intelligent controls to significantly lower energy consumption levels to save costs and lower the company's carbon footprint. These can be achieved without any compromise on the quality of light, in fact improving its charm and comfort levels, thereby increasing the perceived value of the real estate.



Beyond illumination





Overview

1

Façade



2

Reception and lobbies



3

Luxury rooms and suites



4

Guest rooms and lobbies



5

Bars, restaurants and lounges



6

Wellness areas



7

Conference and meeting areas



8

Hotel kitchens



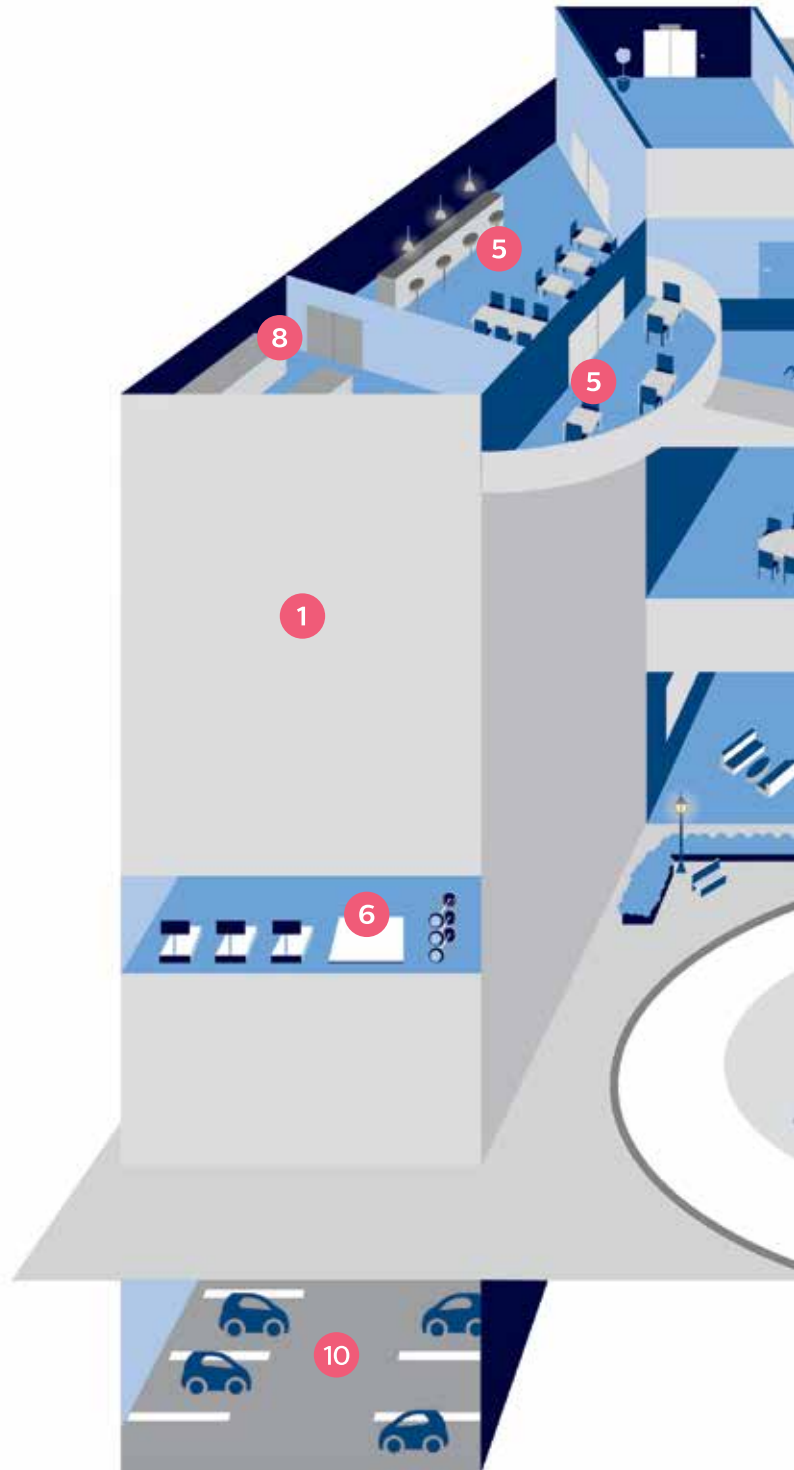
9

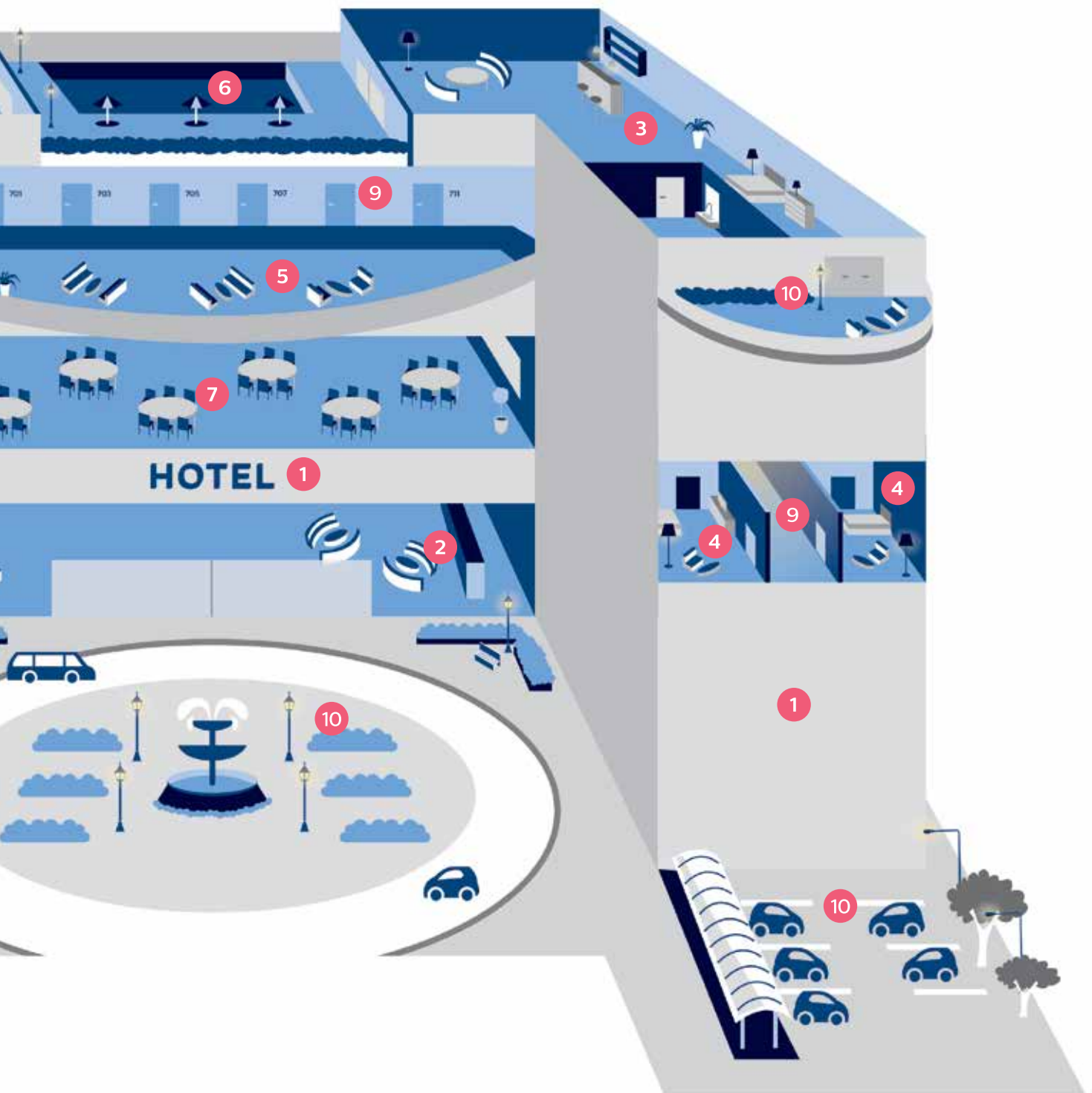
Corridors



10

Landscaping and parking areas







It all starts from the grand entrance. From the driveway to the facade, architectural features should be distinctively branded with the right lights, making this your ultimate billboard trusted across generations. Preserving the grandeur does not need to be a costly exercise. If quality LED lights are used and applied correctly, they will last a long time, requiring almost no maintenance yet making it even more photogenic than ever, flexibly programmable to communicate seasonal hues on demand.



iColor Flex MX gen2



Vaya Flood LP/MP/HP



Vaya Tube



Vaya Linear LP/MP



ColorReach Compact PowerCore



eW ColorBlast

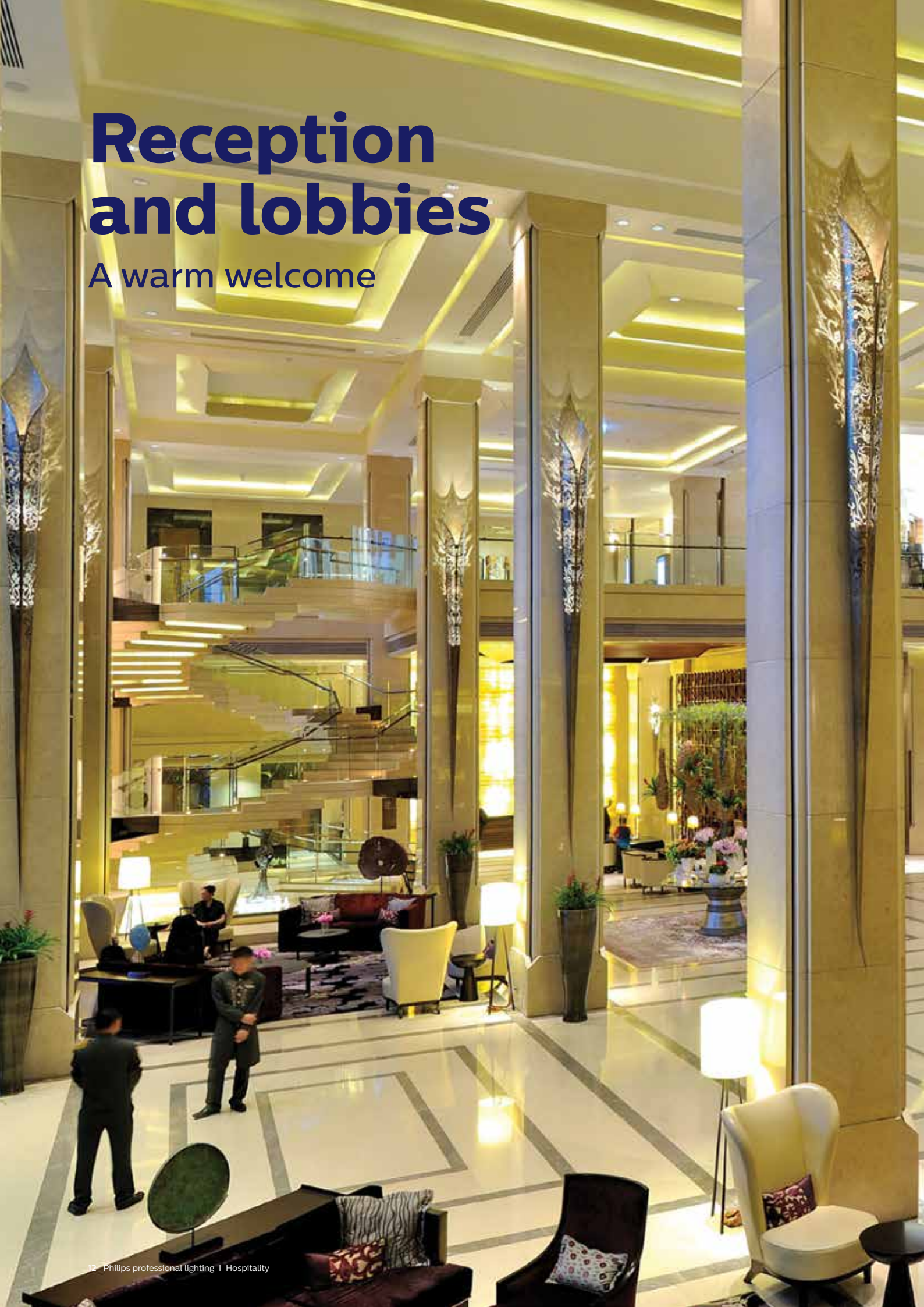


Façade

Beaming with excitement

Reception and lobbies

A warm welcome





Architects have longed to treat light as a material. LED lighting technology now enables us to do this. With no visible light source helping to de-clutter visual spaces, good lighting should be designed such that it is there where needed and in the right amount. Spot lighting is now elegant and discrete, coves can be beautifully integrated to give warm light or coloured light to match the hotel's branding needs. Seamless integration in the form of luminous carpets and textiles can also be subtly introduced to enhance the hospitality experience, as an understated and polished piece.



FlexAccent



GreenAccent Gen 2



MR16 Dimmable



AR111 Dimmable



LuxSpace



Decorative Filament
Candle/Bulb



Philips Hue*



Luminous
textiles/carpets*

** Not available in some countries*

PHILIPS
dynamite

Applies to all LED products



Luxury rooms and suites

Get pampered

Here comes your repeat VIP customer, checking in with his wife on their 10th wedding anniversary, making this their 5th stay at the same luxury suite. Expectations are heightened, yet they are here to relax and unwind, so in place of party poppers, how about a customised greeting on illuminated carpets as they are invited in? Schedule a special in-room dining experience prepared by their butler, with desserts to go with their favourite movie paired with scenes-changing colours by the gentle Philips hue. Complimentary gestures from the hotel can always be complemented with thoughtful and subtle changes in ambience, to thank your guests and impress them.



MR16 Dimmable



Master Dimtone Candle



Master LEDtube T8



eW iColorCove QLX/EC/MX



Luminous carpets*



Philips Hue*

PHILIPS

dynalite



Applies to all LED products

* Not available in some countries

Whether here for business or leisure, most hotel guests are out and about in the day, and returning after night fall after the 2nd service by the housekeeping crew, typically known as the turndown service. This is when the spotlights in the room gets dimmed, and flexible scene-switch LED bulbs gets flipped instantly from cool daylight to warm white just via the normal light switch, and sparkly chandeliers come on in a glare-free manner to encourage relaxation while making it easy to read a book or browse on your tablet. Dynalite controls make things simple here via popular presets that can be activated on touch panels or by the bedside.



MR16 Dimmable



Entry LED Bulb



Master Dimtone Candle



Master Dimtone Clear Bulb



Scene Switch Step Dim Bulb



Master LEDtube T8

PHILIPS
dynalite



Applies to all LED products

Guest rooms

Designed for comfort



Bars, restaurants and lounges

Refresh and delight

Mouth-watering gourmet experiences can be complemented with perk me up lighting during breakfast rounds, calming lights during chaotic lunch hours and beautiful, ambient lights to accompany aperitifs and starters in the evenings. Whether in an alfresco setting or an intimate indoor environment, restaurateurs and chefs are working with lighting designers to constantly challenge the limits when it comes to creating the best mood to suit different dining menu and special occasions. Philips dynalite controls make it really simple for the Maître d'hôtel to be able to effect these pre-set moods via touch panels or push buttons. Lights have to be gentle and subtle, tunable to suit different ambient needs yet hardy and waterproof for outdoor or poolside dining spots.



eW iColorCove
QLX/EC/MX



Vaya Flood
LP/MP/HP



Vaya Tube



Vaya Linear LP/MP



FlexAccent



GreenAccent
Gen 2



MR16 Dimmable



AR111 Dimmable



Decorative Filament
Candle/Bulb



Philips Hue*



Luminous
textiles/carpets*



Master
Dimtone Candle

* Not available in some countries

PHILIPS
dynalite

Applies to all LED products



Health is a state of the body. And wellness is a state of the being. Seeking a good balance, your busy guests are likely to hit the gym or pool in the mornings or the evenings, or head to the spa for a rejuvenating massage. Lighting needs to be perfect here, to have the body and the mind fully at ease. Indirect spotlights that are non-glaring, cove lighting to give just about enough light, and a balance of colour temperatures to keep the space clean and cool, the right levels around machinery for safety while a tinge of relaxation hues needed in rest and relax corners. Worried that the gym lights are always on? With controls, occupancy sensors or daylight harvesting sensors, the gym lights can come on and off, gently balancing the light levels along with the daylight streaming in. Philips hue is also in use in spas and salons to flexibly and affordably allow an easy change of mood via its light recipes, controllable with smart-devices or the self-powered hue tap.



MR16 Dimmable



GreenSpace



Master LEDtube T8



Philips Hue*

** Not available in some countries*

PHILIPS
dynamalite 

Applies to all LED products

A photograph of a modern gym interior. The ceiling is a prominent feature, consisting of a grid of recessed lighting fixtures that create a series of concentric, glowing circles. The gym floor is light-colored with curved, darker grey patterns. On the left, there is a row of treadmills. On the right, there are various pieces of exercise equipment, including a large machine in the foreground. The overall atmosphere is clean, bright, and modern.

Wellness zone

Lighting that helps recharge

Conference and meeting areas

Switch on the possibilities

The most constructive business discussions happen in the boardroom and not in the ballroom. Hotels specialising in MICE events devote extra efforts to ensure there is a good balance of functional lights and accent lights in meeting rooms that are almost always fully booked. The lights must be of good quality to ensure no down-time, to not interrupt serious meetings to replace a blown bulb. Tunable lights can be adjustable to ensure maximum productivity under focused meeting mode, yet be switched over to warm, cozy lights if the space has to be transformed into a reception room for an intimate wedding engagement ceremony. Increasing each square footage of income potential is really important for hoteliers, and imagine achieving so while significantly bringing down the facility's energy consumption.



MR16 Dimmable



AR111 Dimmable



Master LEDtube T8



FlexAccent



GreenAccent Gen 2



Coreline



GreenSpace

PHILIPS
dynamilite

Applies to all LED products



Hotel Kitchens

A quality back of house





Safety and hygiene are of utmost importance to the back of house. This is certainly the heart of the hotel, the place operating 24/7, fixing warm meals for in house guests as well as for restaurant visitors. Lighting must be thoughtfully planned here - giving the kitchen chefs and crew the right level of light while ensuring no glare, also incorporating dust-resistant lights fit for clean rooms to minimise the need for maintenance or service disruption. As chefs would put it, the best dishes need to be prepared and served swiftly, while at its best colour, texture and temperature. The right lights can enhance productivity and efficiently in the area, while keeping it safe for everyone.



GreenPerform
Batten



Pacific LED
Waterproof

PHILIPS
dynamalite

Applies to all LED products

Corridors

More than just a passing fancy

201-207
208-214
Terrace





Every nook and corner of the hotel can be creatively lit, like a gallery, if you know how to specify the right lights at the right areas in the right amounts. Corridors should never be a labyrinth, and it helps with pleasant and reliable spot and downlights guiding the way clearly, showing the right path back to the guest rooms. Apart from the lift lobby, most hallways and corridors are designed in between rows of rooms without natural light. In times of emergency, if the place is on fire, smoke rises and can cloud the lights above, the exit signage and set off sprinklers. Amid the chaos, if the carpets underneath can illuminate and show the escape route clearly, this could be a life saver. With LED, it does not matter that the lights here are fully lit 24/7. Luminous carpets can also be turned on only when required. Making these sustainable options that saves you electricity bills, while releasing minimal heat, in harmony with your air conditioners.



Master LED MR16



AR111 Dimmable



GreenSpace



Master LEDtube T8



Entry LED Bulb



Luminous carpets*

** Not available in some countries*

PHILIPS
dynamilite

Applies to all LED products

From the landscaping zone to the parking facilities, safety is paramount for your guests to feel at ease and assured. Parking facilities are fully lit for 24 hours a day, and this calls for quality LED battens or tubes to be fitted, reducing energy consumption while keeping optimal brightness for motorists and pedestrians. Due to the high humidity in these areas, often located in the basement, or right at the roof top, hardy and IP-rated waterproof options are available for peace of mind. In landscaping zones, it's equally about facade beautification as well as safety for the surroundings and kindness to the trees, hedges and plants. Elegant light posts, together with versatile and programmable flood lights such as the Vaya or ColorBlast range can be installed for its hues to instantly light up all seasons, anniversaries and festive occasions. These LEDs are bright yet natural, providing a uniform grazing effect with various beam angles flexible for lighting up tall trees to building facades.



Vaya Flood
LP/MP/HP



Vaya Tube



Vaya Linear LP/MP



ColorReach
Compact
PowerCore



eW ColorBlast



GreenPerform
Batten



Coreline
Waterproof



Smart LED
Post top



Smart LED Bollard



Smart LED Marker



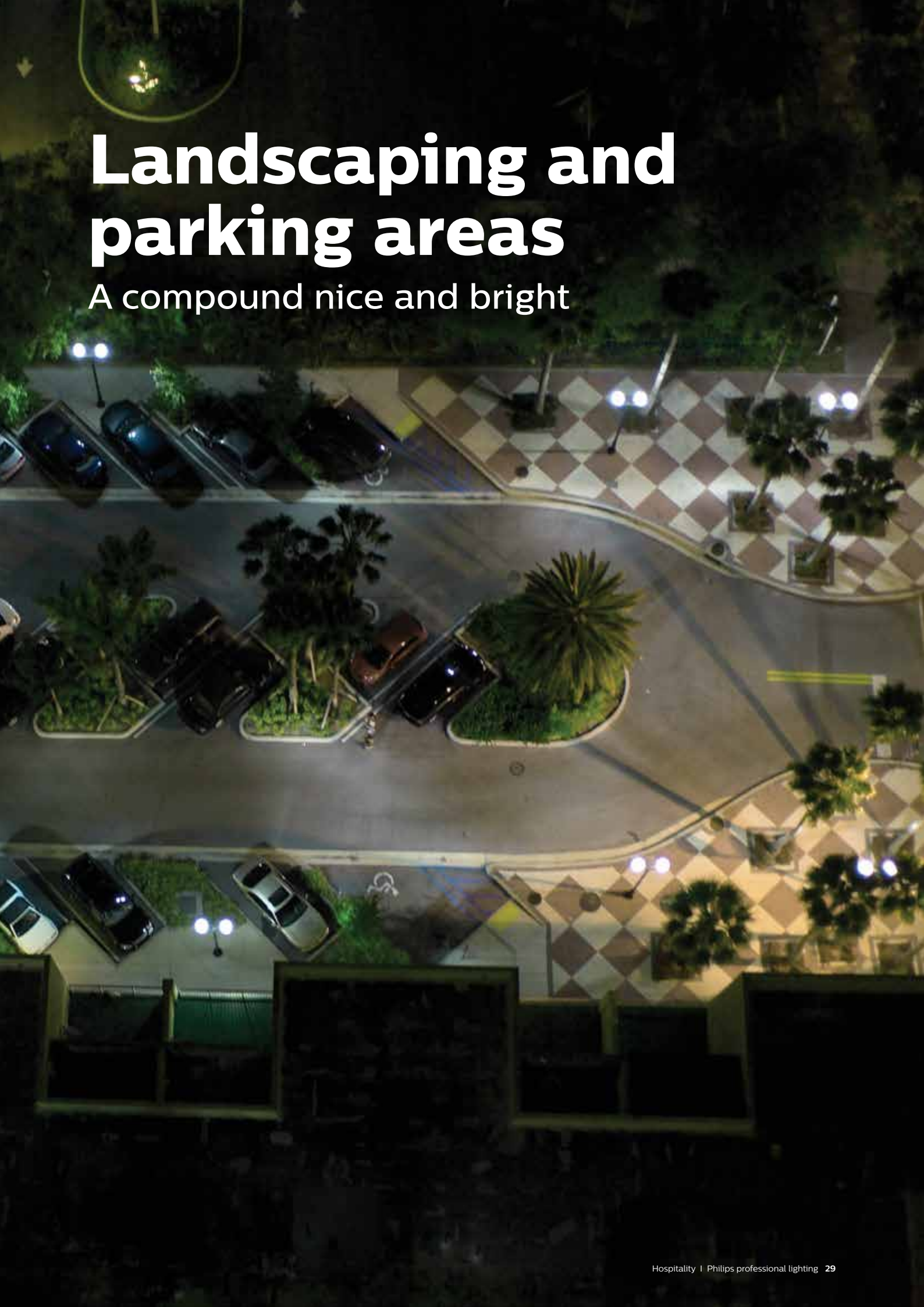
CitySpirit Cone

PHILIPS
dynalite

Applies to all LED products

Landscaping and parking areas

A compound nice and bright



Façade



Bars, restaurants and lounges



Reception and lobbies



Wellness areas



Luxury rooms and suites



Conference and meeting areas



Guest rooms



Hotel kitchens



Corridors



Landscaping and parking areas



• For indoor parking

We've got you covered

As your lighting solutions partner, we aim to give you complete one-stop solutions that can maximise your investment. We can customise our solutions and professional services to meet your specifications, standards and budgets. What's more, we stay ahead of global lighting trends to ensure your hotel, restaurants and facilities stay up-to-date and trendy.



* Not available in some countries



Delivering the **premium hotel experience**

Jet-setters of today have higher than ever expectations. Personalised service is demanded, from suiting my style, my habits, my time and more. With Philips dynalite controls, empower your guests to do exactly that. Hand them the control and let each individual decide how they wish to enjoy their rooms. At the same time, hotel owners can also incorporate sensors and daylight harvesting features to ensure artificial lights come on only when required, resulting in significant savings, yet branding your premises with a nice state-of-the-art technology to surprise and delight.

Antumbra



Introducing Antumbra from Philips Dynalite. This new range redefines the pre-conceptions about what a user interface keypad or panel can be and the way people can intuitively interact with automated control systems. Antumbra sets the standard from both a design and an engineering perspective. Not only is Philips pushing the boundaries of what a user interface could be, but it also includes new methods of interaction, construction, installation and aesthetics. The result is a truly unique user interface that is able to use the entire faceplate as control points with many features hidden beneath its slick design. The Antumbra panel range will allow for mixing and matching different finishes of buttons and rims to match the clients' requirement.

Click to watch video on Antumbra

http://www.lighting.philips.com/main/subsites/dynalite/library_support/library/videos/antumbra.wpd



Dynalite Controls

The value of a hotel lies in its ability to make guests feel at home. With Philips Dynalite Control System, you can truly achieve so, as they will have the luxury of controlling all aspects of their stay simply and comfortably.

You can configure, control and monitor all the lights and system components from any point on the network and generate system status reports. Philips Dynalite adopts a flexible approach to accommodate building churn – changing tenancies, fluctuating staff numbers and varying office/commercial activities. User interfaces can access any function, and all output channels can be easily reconfigured without wiring changes. The same components can be used in a single-room application or in larger projects involving thousands of controlled units.

The Philips Dynalite range of integration devices and network gateways allows the DyNet system to be configured to work in conjunction with other systems, such as blinds, audio-visual, temperature control and building management systems.

Sophisticated yet simple to operate, these intelligent controls will raise the image and value of your premises, while giving guests a luxurious and unparalleled experience.



Philips hue*

Best known to be the affordable, personalised wireless lighting system from Philips to answer automation needs for homes and small spaces, Philips hue does more than delivering 16 million colours within its LED light. It delivers light all around with its unique bulb shade, giving functional shades of white light ranging from concentrate mode, energise mode, relax mode to reading mode. Suitable for cafe bistros, hospitality suites and spas, this is the easiest choose-it-yourself form of light that can be operated on any smart devices running on IOS or Android platforms or simply via the kinetic-powered Philips hue tap.



** Not available in some countries*



Luminous textiles and carpets*

Available in carpet, wall panel and ceiling options, the luminous textiles is no more than 130mm (max) in its total thickness, and yet it is ambient lighting at its most natural, most comfortable and most unique formats. Cutting-edge LED lights are embedded within carpet options, with programmable messages that can be personalised to meet and greet your VIPs. Wall panels are beautifully textured like a feature wall, but turn the lights on and floating clouds, christmas baubles and sporting scenes can all be loaded easily via a usb stick taking in .wmv motion graphic or video files. The result, a modern display of lighting art that are nicely flushed with your flooring, walls and ceilings, giving your customers a memorable experience that is bound to be most photographed, video-ed and shared.



Decorative Filament Candle/Bulb

Retro and classy, yet it saves you a good 90% in energy consumption. Perfect for decorative lighting for hotels, restaurants and other creative spaces, this is the answer to a final replacement of the incandescent or tungsten equivalent. The long, elegant yet hardy strands of LED filaments gives out refined and defined warm light that cannot be distinguished from the traditional bulbs.

A 5-star experience







Sheraton Hotel Malaysia

Starwood hotel and resort group was looking for an all-in solution provider who can help the hotel group reduce its carbon footprint and convert its facility into a more sustainable one.

Carrying a total of 38 floors and 385 guest rooms, Sheraton Imperial Kuala Lumpur Hotel was identified as a pilot to be upgraded to LED via retrofit lamps. One of the key challenges was the integration of energy saving technology while maintaining the existing lighting ambience that is luxurious and cosy. Finally Philips LED solutions were used in the project, helping the hotel achieve an astonishing energy reduction by 85% as compared to the former conventional lamps. The payback period was fast and more importantly, it minimised the need for regular maintenance helping the hotel achieve greater operational excellence.



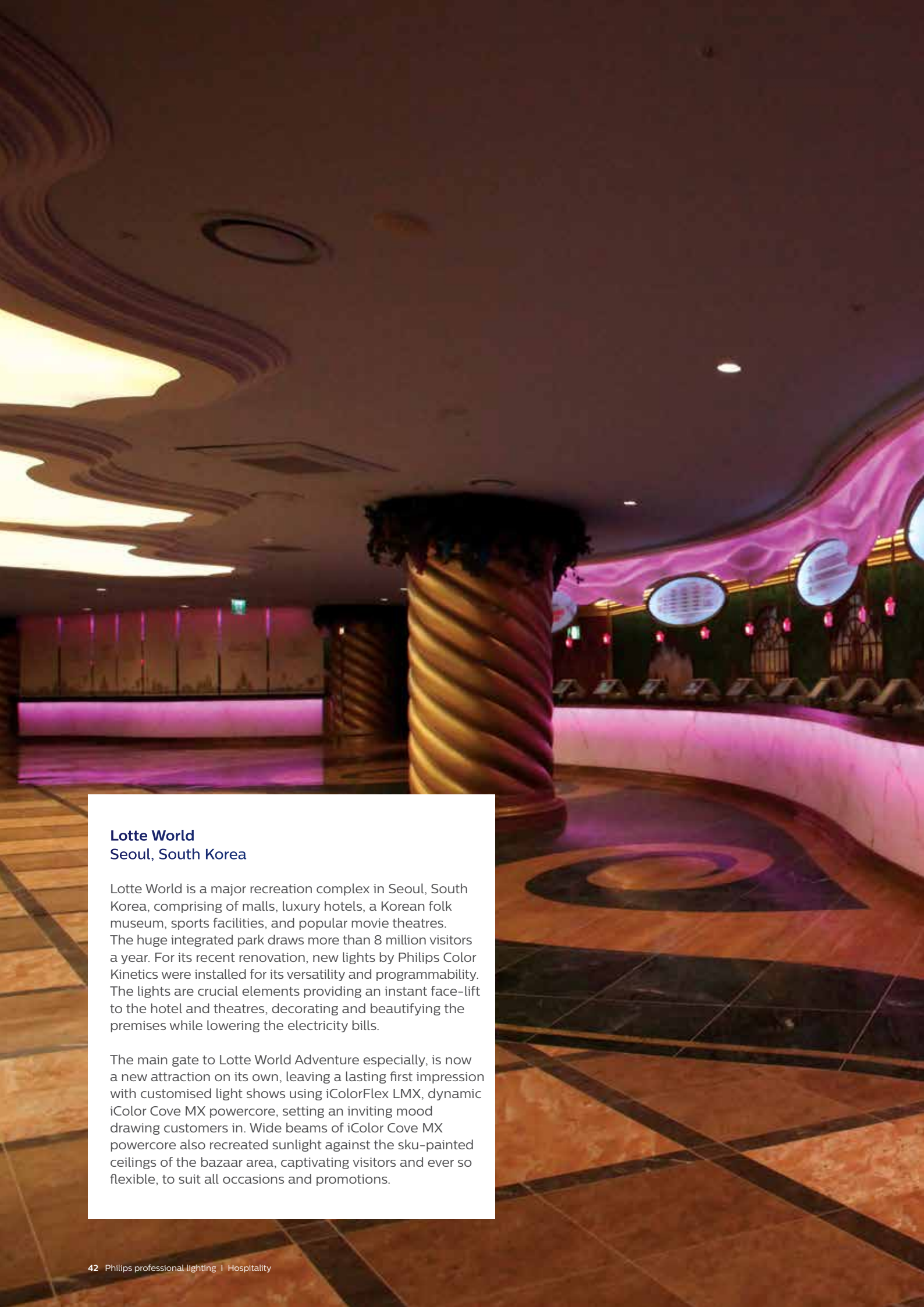




The Ritz-Carlton Hotel Berlin, Germany

The Ritz-Carlton in Berlin is a five-star hotel with luxurious interiors that recall the grandeur of the colonial empire. Recently, the hotel invited Philips to propose a new lighting system that would be sustainable yet superior to the performance of the previous system, without compromising the light effects and ambience. The management also wanted to reduce energy costs and CO₂ emissions, while minimising heat and maintenance.

LED was thus the logical and sustainable choice. Chandelier lamps were replaced with LED candle bulbs. Compared to previous lights, the new LEDs allowed the chandeliers to be turned on instantly, with more sparkle than before, giving a boost to the luxurious atmosphere. In addition, the long lifetime of these quality LEDs meant reduced maintenance costs and no down time. With heat release at its minimum, the settings of A/C can be better regulated for more savings. With a total energy savings of 75%, this hotel managed to cut its annual operating cost by at least 27,000 euros, just with a partial swap to Philips LED.



Lotte World Seoul, South Korea

Lotte World is a major recreation complex in Seoul, South Korea, comprising of malls, luxury hotels, a Korean folk museum, sports facilities, and popular movie theatres. The huge integrated park draws more than 8 million visitors a year. For its recent renovation, new lights by Philips Color Kinetics were installed for its versatility and programmability. The lights are crucial elements providing an instant face-lift to the hotel and theatres, decorating and beautifying the premises while lowering the electricity bills.

The main gate to Lotte World Adventure especially, is now a new attraction on its own, leaving a lasting first impression with customised light shows using iColorFlex LMX, dynamic iColor Cove MX powercore, setting an inviting mood drawing customers in. Wide beams of iColor Cove MX powercore also recreated sunlight against the sky-painted ceilings of the bazaar area, captivating visitors and ever so flexible, to suit all occasions and promotions.



요금 안내 Ticket Information

티켓 종류 Ticket Type	성인 (19세 이상) Adult (19+)	청소년 (12-18세) Teen (12-18)	유소년 (12세 이하) Youth (12-)	유아 (3세 이하) Baby (Under 3)
일반 Adm A	₩ 44,000	₩ 34,000	₩ 24,000	₩ 11,000
일반 Adm B	₩ 34,000	₩ 24,000	₩ 14,000	₩ 11,000
일반 Adm C	₩ 24,000	₩ 14,000	₩ 11,000	₩ 11,000
일반 Adm D	₩ 14,000	₩ 11,000	₩ 11,000	₩ 11,000

₩ 11,000
무료 (1인당 허용인 기준인 구입)

LOTTE WORLD ADVENTURE

Welcome to
LOTTE WORLD
ADVENTURE

2





Intercontinental Hotel Bangkok, Thailand

Centrally located in the heart of Bangkok, for the convenience of her customers, the grand Intercontinental Hotel has always been known as a luxury hotel that combines modern architecture with timeless elegance. As the previous lighting system did not work well, affecting the hotel's infrastructural performance and resulted in costly repairs, the Hotel turned to Philips Lighting for its energy-efficient and reliable range of quality LEDs to turn the situation around. Philips delivered Master LED bulbs, the ideal and simple retrofit solution that saves on maintenance and energy, while producing a warm halogen-like accent beam perfect for ambience creation without actually giving out much heat. The result is a swiftly converted hotel that is greener than before, raising its credentials further and delighting the guests.

According to the hotel management, Philips leveraged its industry-leading expertise to provide a lighting solution that enabled the hotel to achieve far beyond expectations.



Hotel Rafayel
London, United Kingdom

Hotel Rafayel is one of London's newest and upscale choice of hotel accommodation. Philips Lighting team stepped in to provide quality and beautiful lights to help fulfill the hotel's brief to create a refined luxury feel while keeping the ambience warm and cosy.

In the executive suites, guests take charge and recharge with 'light therapy' options, taking their pick from a menu of enjoyable ambience options best suited for their lifestyle, their mood of the day, whether to relax or to energise. The common areas are creatively lit, with well positioned lights highlighting the sophisticated decor, evoking glamour and charm. The core of the building involved areas that are windowless, so colour-changing iColor Cove lights are here to recreate natural lighting while coloured lights are turned on in the evenings. LED floodlights that are powerful yet highly energy-efficient brighten and beautify the hotel facade, giving it an updated and stunning new look that is still kind and sustainable.



Intelligent hotels redefined







	Façade	Reception and lobbies	Luxury rooms and suites	Guest rooms	Bars, restaurants and lounges	Wellness areas	Conference and meeting areas	Hotel kitchens	Corridors	Carparks and outdoor areas
Dynalite DDMC GRMSPLUS			●	●						
Dynalite DDRC-GRMS			●	●						
Dynalite DUS360CR Multifunction Sensor			●	●		●	●		●	●
Dynalite DTP170 Colour Touchscreen			●	●	●	●	●			
Dynalite Antumbra Button/Display/Touch		●	●	●	●	●	●			
eW/iColorCove QLX/EC/MX			●		●					
iColor Flex MX gen2	●									
Vaya Flood LP/MP/HP	●				●					●
VayaTube	●				●					●
Vaya Linear LP/MP	●				●					●
ColorReach Compact PowerCore	●									●
eW ColorBlast	●									●
FlexAccent		●			●		●			
GreenAccent Gen 2		●			●		●			
GreenPerform Batten**								●		●
Coreline Waterproof Batten**										●
Master LEDtube T8			●	●		●	●		●	
Smart LED Post Top										●
Smart LED Bollard										●
Smart LED Marker										●
CitySpirit Cone										●
Master LED MR16									●	
MR16 Dimmable		●	●	●	●	●	●			
AR111 Dimmable		●			●		●		●	
LuxSpace		●								
GreenSpace						●	●		●	
Coreline							●			
Entry LED Bulb				●					●	
Master Dimtone Candle			●	●	●					
Master Dimtone Clear Bulb				●						
Decorative Filament Candle/Bulb		●			●					
Scene Switch Step Dim Bulb				●						
Philips Hue*		●	●		●	●				
Luminous textiles/carpets*		●	●		●				●	



* Not available in some countries
 ** For indoor parking

Support from **start to finish**

With teams operating around the world, we have extensive experience handling lighting challenges on behalf of our customers. We aim to be your best lighting partner, working along with your designers and architects, offering the right expertise and solutions to beautify your space. Allow us to help you with planning, implementing and maintaining your project every step of the way.



Advisory Services

Can a lighting upgrade help your business grow? Get an expert light audit from Philips Advisory Services

- Auditing your energy consumption
- Bringing creative ideas to life
- Helping you plan, making it happen
- Helping you convince the team



Project Services

Get your lighting installation completed quickly and efficiently, with Philips Lighting Project Services

- Project management
- Installing your system
- Integrating and programming
- Lighting performance contracts
- Energy savings projects



Lifecycle Services

Let Philips handle your installation with service agreements that can be tailored to your needs. These could include:

- Helpdesk, remote diagnostics and fault investigation, system health checks and spare parts replacement
- Qualified service engineers for preventive and corrective maintenance of your installation
- Asset management, data analytics and consultancy, system optimisation and more



Philips Lighting Capital

Finance your new lighting system with little to no upfront investment

- Protecting your cash flow
- Saving you time and money

Note: Certain services may not be available in all countries. Kindly check with your local Philips representative for details.



©2016 Koninklijke Philips N.V.

All rights reserved. Reproduction in whole or in part is prohibited without prior written consent of the copyright owner. The information presented in this document does not form part of any quotation or contract, is believed to be accurate and reliable and may be changed without notice. No liability will be accepted by the publisher for any consequence of its use. Publication thereof does not convey nor imply any license under patent – or other industrial or intellectual property rights.

Philips Lighting Australia

A sector of Philips Electronics
Australia Limited, 65 Epping Road,
North Ryde 2113, Australia
Tel: 1300 304 404
retailighting@philips.com
www.philips.com.au/lighting

Philips Lighting New Zealand

Level 3, 123 Carlton Gore Road
Newmarket, Auckland 1023
New Zealand
Tel: 0800 454 448 / 0800 4LIGHT
connected.nz@philips.com
www.philips.co.nz/lighting