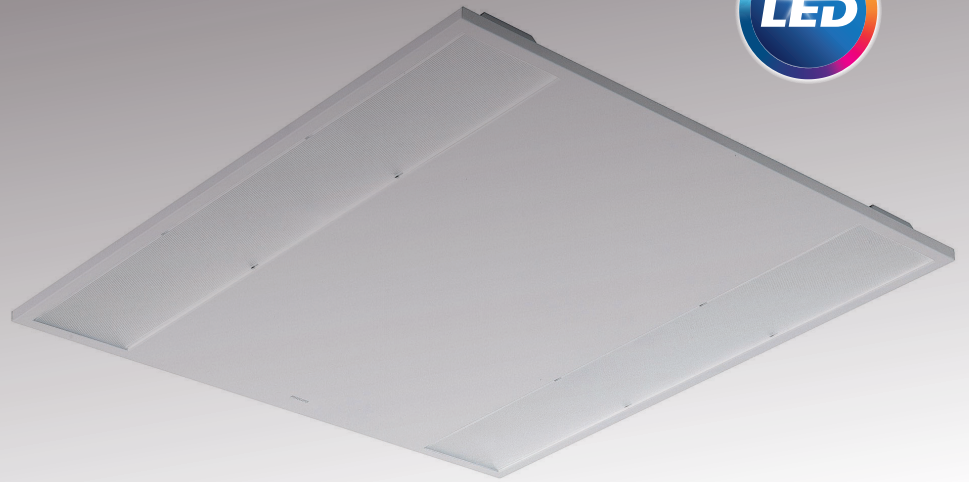


**PHILIPS**

Coreline 2.5 LED  
Luminaire

24W, 37W



# Cost-effective office lighting with the **Coreline 2.5 LED**

The new generation Coreline 2.5 is a functional LED luminaire ideal for general lighting applications. At up to 110lm/W, the Coreline 2.5 is the perfect conventional troffer replacement with long lifetime while delivering the required light output.

## **Features and benefit**

- Affordable LED lighting
- High system efficacy of up to 110lm/w
- Comfortable light with minimal glare creates an improved working environment
- Long life: up to 50,000 hrs @ L70 and low maintenance
- The integrated actilume controller (ACL) option uses automatic daylight sensing and presence detection to achieve additional energy savings

# Product data

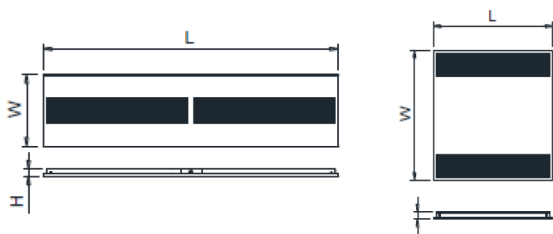


Family name	Coreline 2.5 LED	
Luminaire model	RC100C (Recessed)	
	SM100C (Surface mounted, suspended)	
Lumen/Watt	LED25S - 24W/2700lm LED35S - 37W/3900lm	
Correlated Colour Temperature (CCT)	4000K (3000K option available on request)	
Colour Rendering Index (CRI)	≥ 80	
Lifetime	50,000hrs at L70 (25°C)*	
Optics	PMMA optical lens	
Driver	Integrated fixed and DALI driver options	
Dimmable	Compatible with DALI controllers (1-10V available on request)	
Integrated control	Integrated actilume control version available	
Installation	T-Bar recessed and plaster mounting, surface mounted, suspended**	
IP rating	IP20	
Dimension/Weight	<b>Recessed</b> Rectangle - 1197x297x30/2.8kg Square - 597x597x30/2.8kg	<b>Surface mounted/Suspended</b> Rectangle - 1197x197x30/3.7kg Square - 597x597x30/4.4kg
Colour of housing	White	
Application	Commercial buildings, open office, cell office, hospital	
Accessories	Suspension kit and plaster recessed kit sold separately	

\*When the fitting reaches 70% of full potential (new)

\*\*Suspension kit sold separately, to be use on surface mounted version

## Dimensions (mm)



Model	W	L	H	Weight
RC100C - Rectangle	297	1197	30	2.8
RC100C - Square	597	597	30	2.8
SM100C - Rectangle	197	1197	30	3.7
SM100C - Square	597	597	30	4.4

# Coreline 2.5 LED Luminaire

## Recessed



## Surface mounted



## Recessed

---

### Recessed-25S-2700 lumen-24W

RC100C LED25S/840 PSU W30L120

RC100C LED25S/840 PSU W60L60

---

### Recessed-35S-3900 lumen-37W

RC100C LED35S/840 PSU W30L120

RC100C LED35S/840 PSU W60L60

---

### Recessed-35S-3900 lumen-37W Dali Actilume

RC100C LED35S/840 PSD W30L120 ACL

RC100C LED35S/840 PSD W60L60 ACL

---

### Recessed-35S-3900 lumen-37W Dali

RC100C LED35S/840 PSD W30L120

RC100C LED35S/840 PSD W60L60

---

Other variants available on request

## Surface mounted

---

### Surface-25S-2700 lumen-24W

SM100C LED25S/840 PSU W20L120

SM100C LED25S/840 PSU W60L60

---

### Surface-35S-3900 lumen-37W

SM100C LED35S/840 PSU W20L120

SM100C LED35S/840 PSU W60L60

---



© 2016 Koninklijke Philips Electronics N.V.  
All rights reserved. Reproduction in whole or in part is prohibited without the prior written consent of the copyright owner. The information presented in this document does not form part of any quotation or contract, is believed to be accurate and reliable and may be changed without notice. No liability will be accepted by the publisher for any consequence of its use. Publication thereof does not convey nor imply any license under patent or other industrial or intellectual property rights. Release date: 08/2016

**Philips Lighting New Zealand**  
Level 3, 123 Carlton Gore Road  
Newmarket, Auckland 1023  
New Zealand  
Ph: 0800 454 448 / 0800 4LIGHT  
[www.philips.co.nz/lighting](http://www.philips.co.nz/lighting)

**Philips Lighting Australia**  
A sector of Philips Electronics  
Australia Limited, 65 Epping Road,  
North Ryde 2113, Australia  
Tel: 1300 304 404  
[www.philips.com.au/lighting](http://www.philips.com.au/lighting)