

**PHILIPS**

Sensors

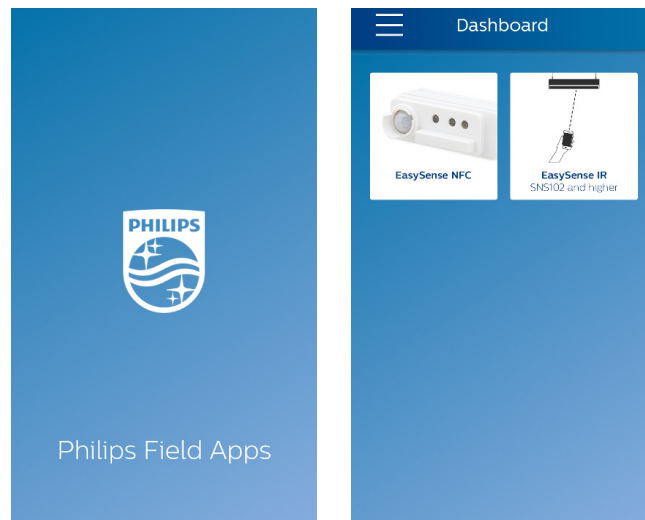
User Manual

EasySense NFC  
and IR App



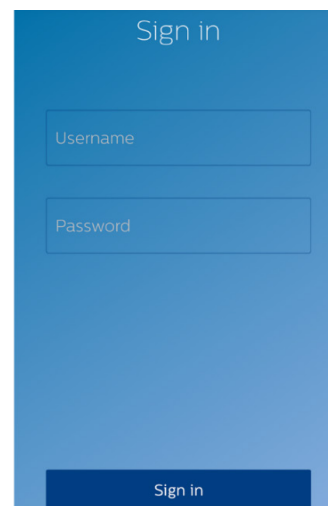
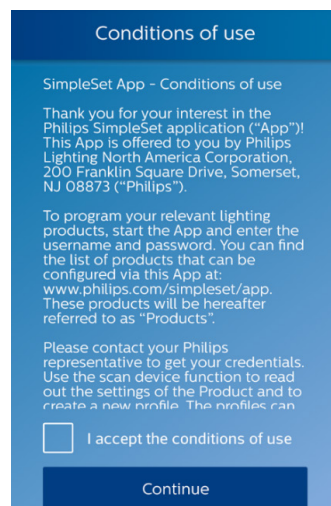
Single, compact,  
**cost-effective**  
**fixture control**

Two apps are available in Philips field apps for configuring EasySense: EasySense NFC and EasySense IR. The EasySense IR app can also be used to commission (group) luminaires with EasySense and add wireless switches to the group (for sensors models SNS102 & SNS200).



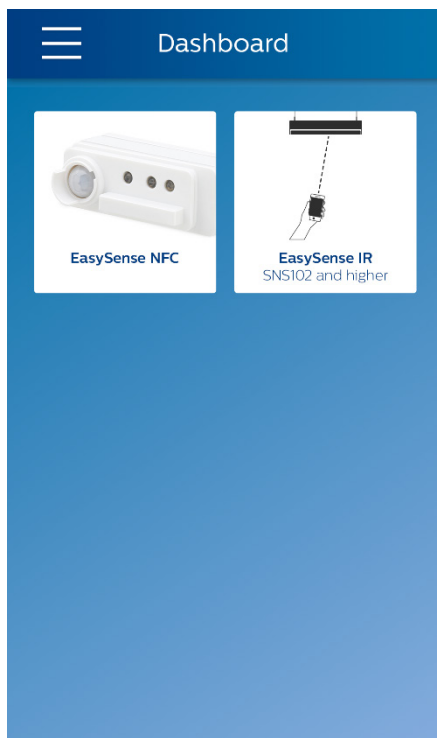
**Phone requirement:** The EasySense app works only on certain Android-based smartphones. Check the EasySense website, [www.philips.com/easysense](http://www.philips.com/easysense), for the latest list of compatible phones with NFC and IR blaster functionality and their NFC reader locations.

The Philips field apps can be downloaded from the Google Play store. First-time users need to accept conditions of use and then sign in with username and password, which can be requested at [www.philips.com/easysense](http://www.philips.com/easysense). Sign-in is only required once per installation of the app. **To have a successful sign-in, please make sure that the phone has internet access.**

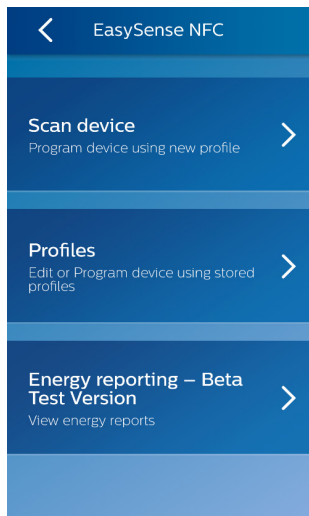


## EasySense NFC app

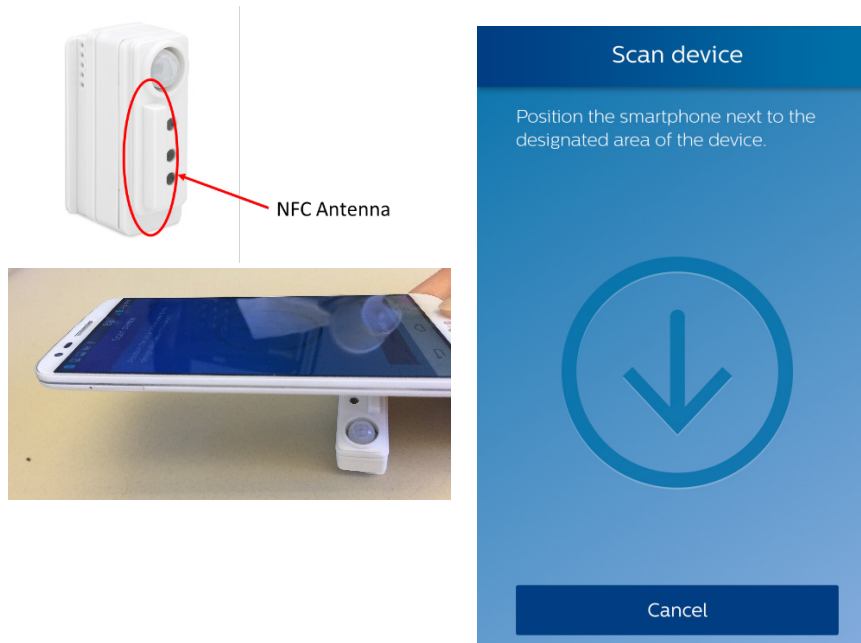
On the main dashboard, click the “EasySense NFC” icon to continue.



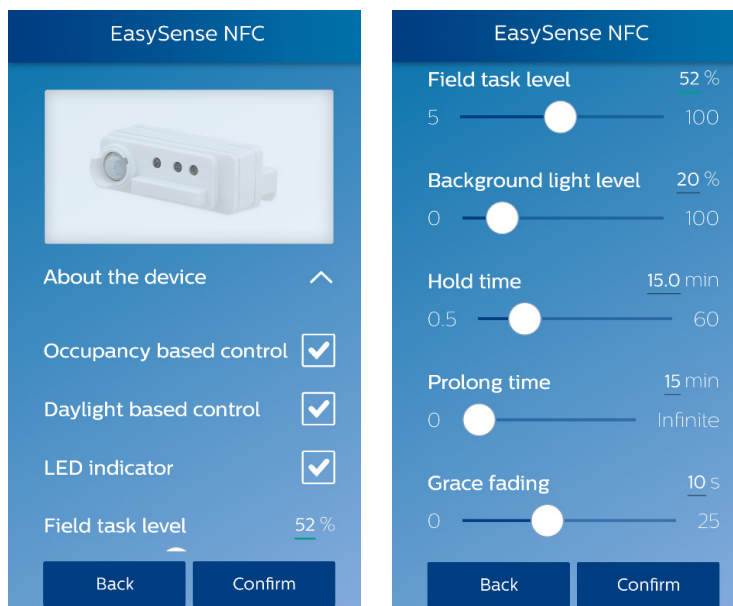
Select “Scan device.”



Place the back of the smartphone (where the NFC reader is located) onto the sensor NFC antenna (almost touching) to enable NFC communication. NFC communication might take a few seconds. Do not move until you hear a beep and the next screen appears.

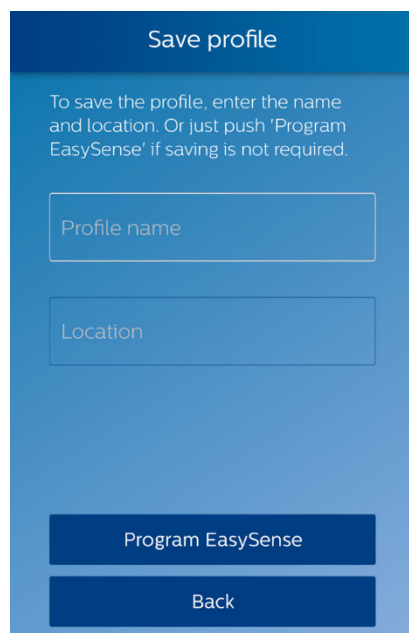


After hearing a beep, the following screen will appear. Key parameters can be configured using the sliding bar or by typing in the exact number on the right. After configuration, press "Confirm."

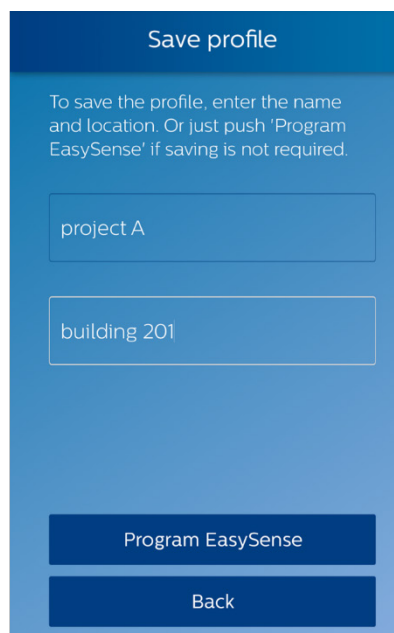


The user has several options.

- a. Click "Program EasySense," leaving "Profile name" and "Location" blank. This approach is quick, however, no information is stored in the Philips Lighting database. No reports on parameters, such as power or sensor settings, can be generated from the database in the future.
- b. Enter "Location" only. This ensures that data, including the location, sensor ID, plus date/time the sensor was programmed, will be stored in the Philips Lighting database. In the future, it will be possible to request reports of power or sensor settings based on the location. NOTE: It is critical to enter a detailed location in order to generate reports from the database.
- c. Enter a "Profile name" and "Location." This saves a profile for future use and stores the data from the scanned EasySense in the Philips Lighting database. All of the EasySense settings, as well as the location, are stored in the profile. In the future, it will be possible to request reports of various data.

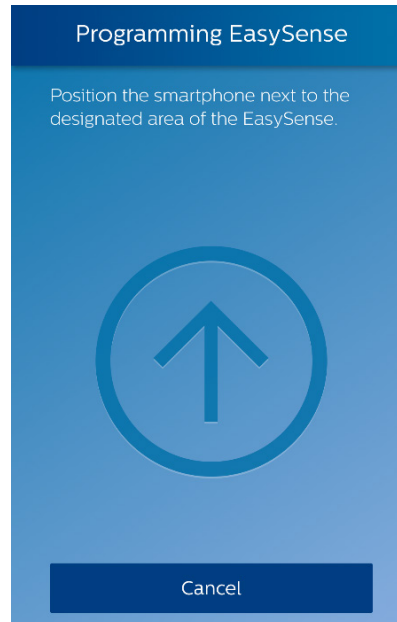


The screenshot shows a mobile application interface titled "Save profile". Below the title is a blue header bar. Underneath, there is a text instruction: "To save the profile, enter the name and location. Or just push 'Program EasySense' if saving is not required." There are two input fields: "Profile name" and "Location", both of which are currently empty. At the bottom of the screen, there are two buttons: "Program EasySense" and "Back".

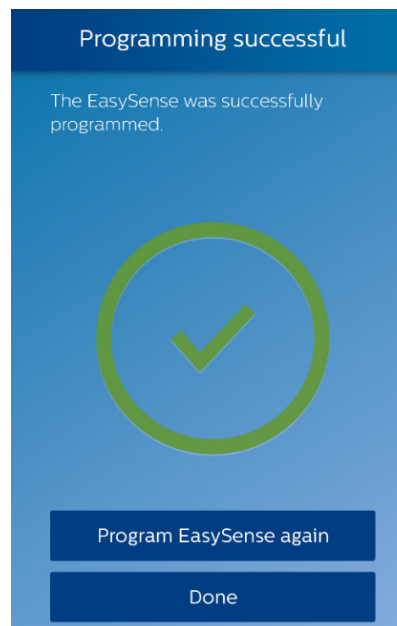


The screenshot shows the same "Save profile" screen as the previous one, but with the input fields filled. The "Profile name" field contains the text "project A" and the "Location" field contains "building 201". The "Program EasySense" and "Back" buttons remain at the bottom.

Click "Program EasySense" and place the back of the smartphone onto the sensor NFC antenna again to enable NFC communication. NFC communication might take a few seconds. Do not move until you hear a beep and the next screen shows.




After programming successfully, a green check mark will appear on the screen. More sensors can be programmed with the same setting by pressing "Program EasySense again." Or press "Done" to finish configuration.

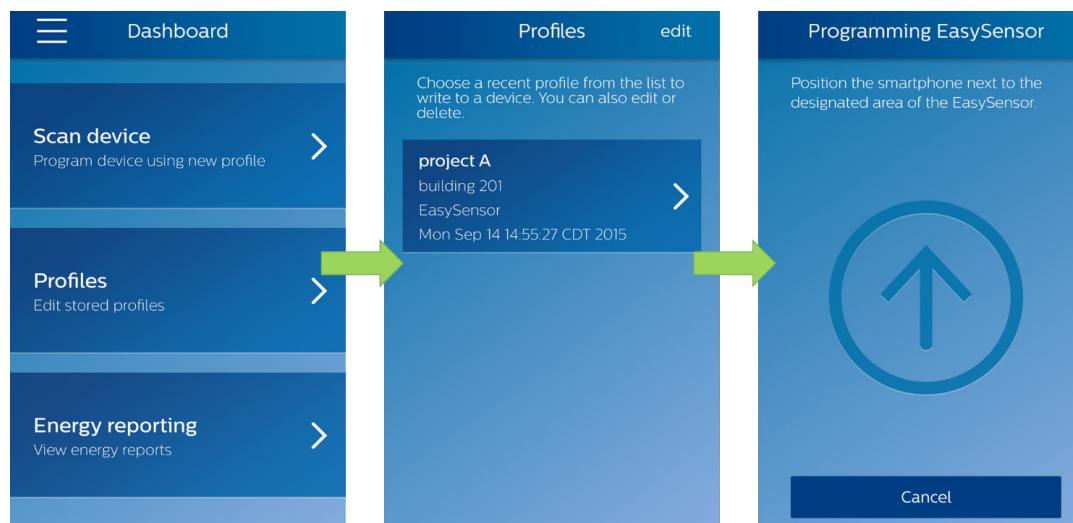


**NOTE:**

Data for each programmed EasySense is automatically transferred to the Philips Lighting database. This can be used to generate a report. To obtain a report of all EasySense programmed at a specific location, contact your Philips Lighting representative.

**IMPORTANT:** It is critical that you enter detailed location information whenever you program an EasySense. The information in this 40-character field will be used to extract your data from the database. It is not possible to extract your information without detailed location data. You may choose to opt out from sending information to this database by selecting Preferences from the main menu and unchecking the "Upload configuration data" checkbox. Click  for "Preferences."

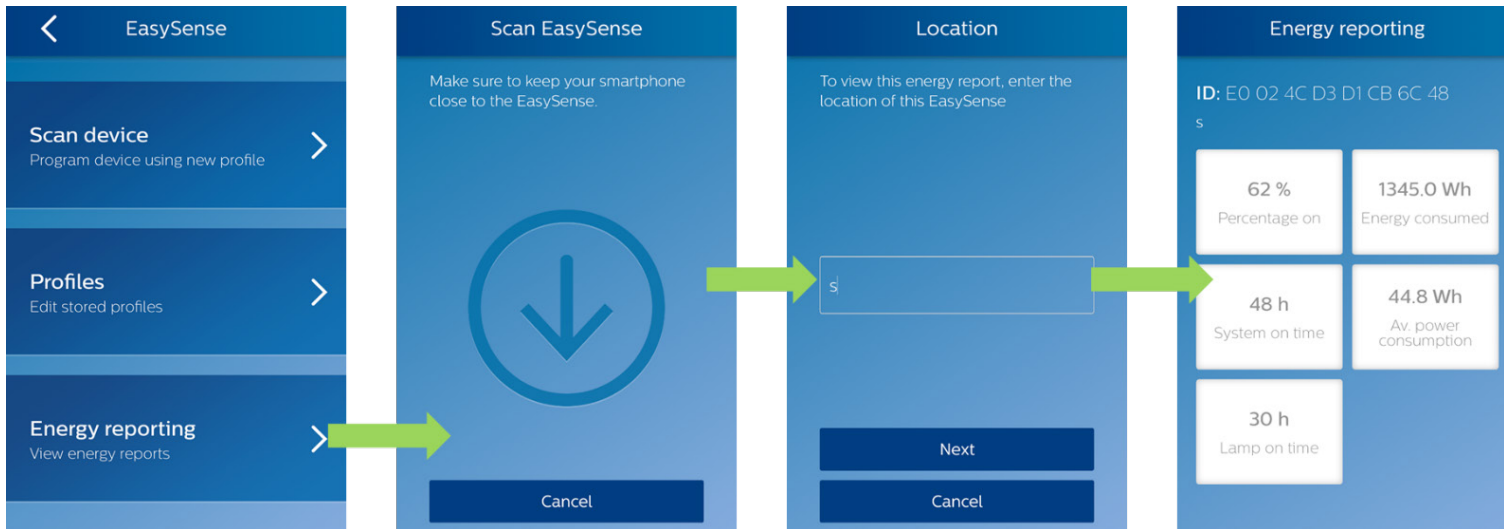
To use a saved profile, go to "Profile" from the main menu, select the desired profile and program sensors. Users can also edit/delete profiles by clicking "edit" on the top right corner.



### Energy reporting – beta version

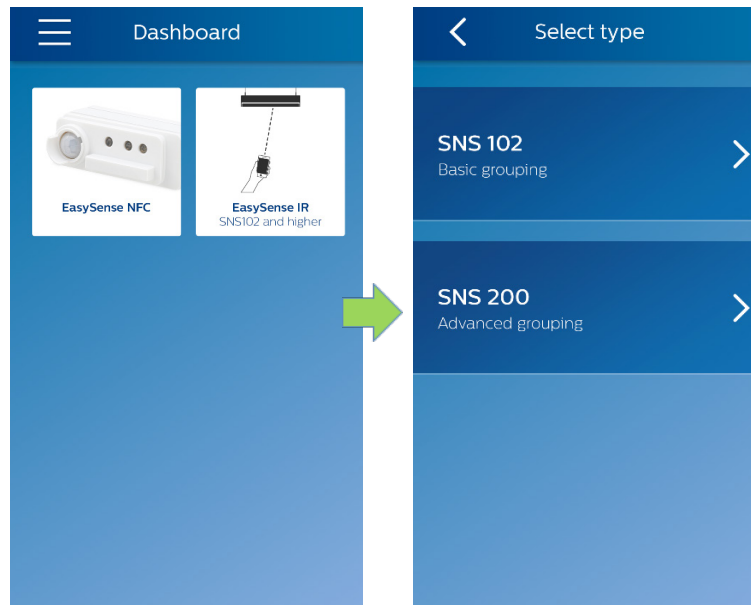
Philips Lighting has provided a beta version. (Beta means "not yet released for production use.") Please feel free to use this feature and provide us your feedback.

The user can follow the steps below to read out energy data, e.g., total consumed energy, average power consumption, percentage time the light has been on, system on time and lamp on time. This feature only works after the system has been powered for at least one hour.



### EasySense IR app

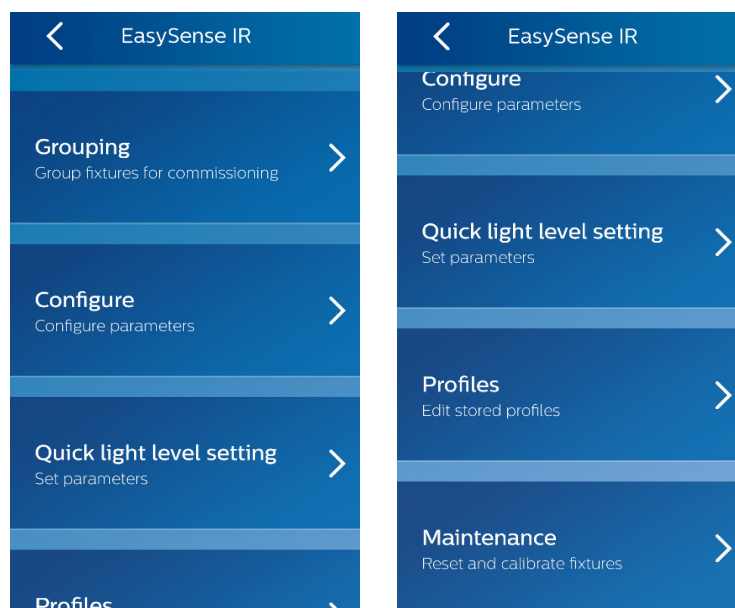
On the main dashboard, click the app icon “EasySense IR” to continue. Then select the version of the sensor(s) you are about to configure: SNS102 or SNS200.





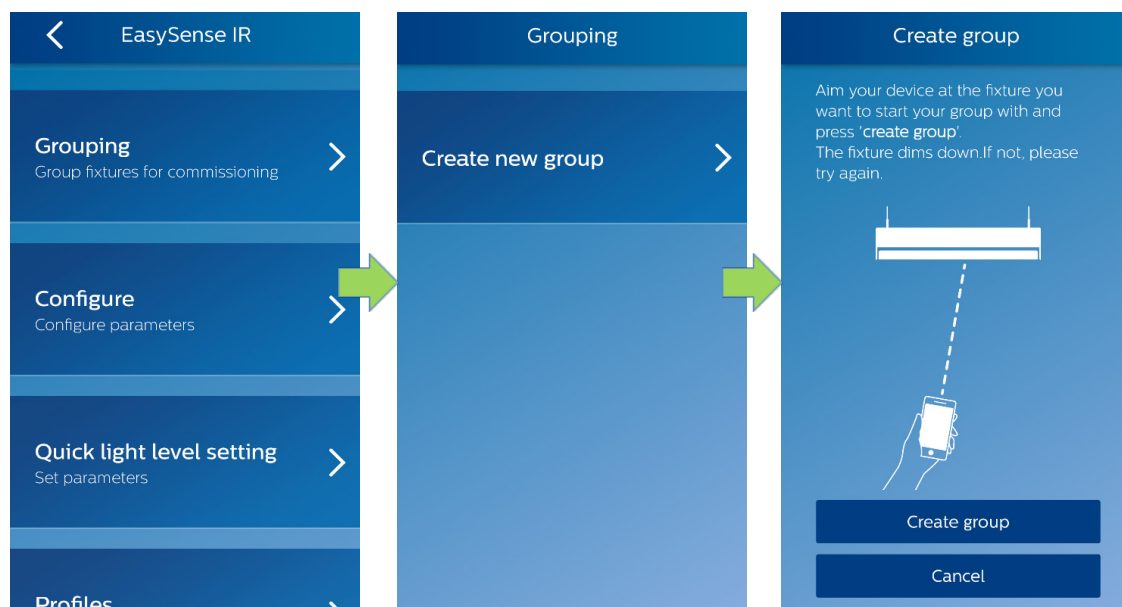
## EasySense IR app – SNS102 & SNS200 common functionalities

With the EasySense IR app, the user can create a group of luminaires with EasySense sensor and add switches to the group ("Grouping"), configure sensors ("Configure"), make a few quick light level settings ("Quick light level setting"), program sensors with stored profiles or edit stored profiles ("Profiles") and reset fixtures ("Maintenance").

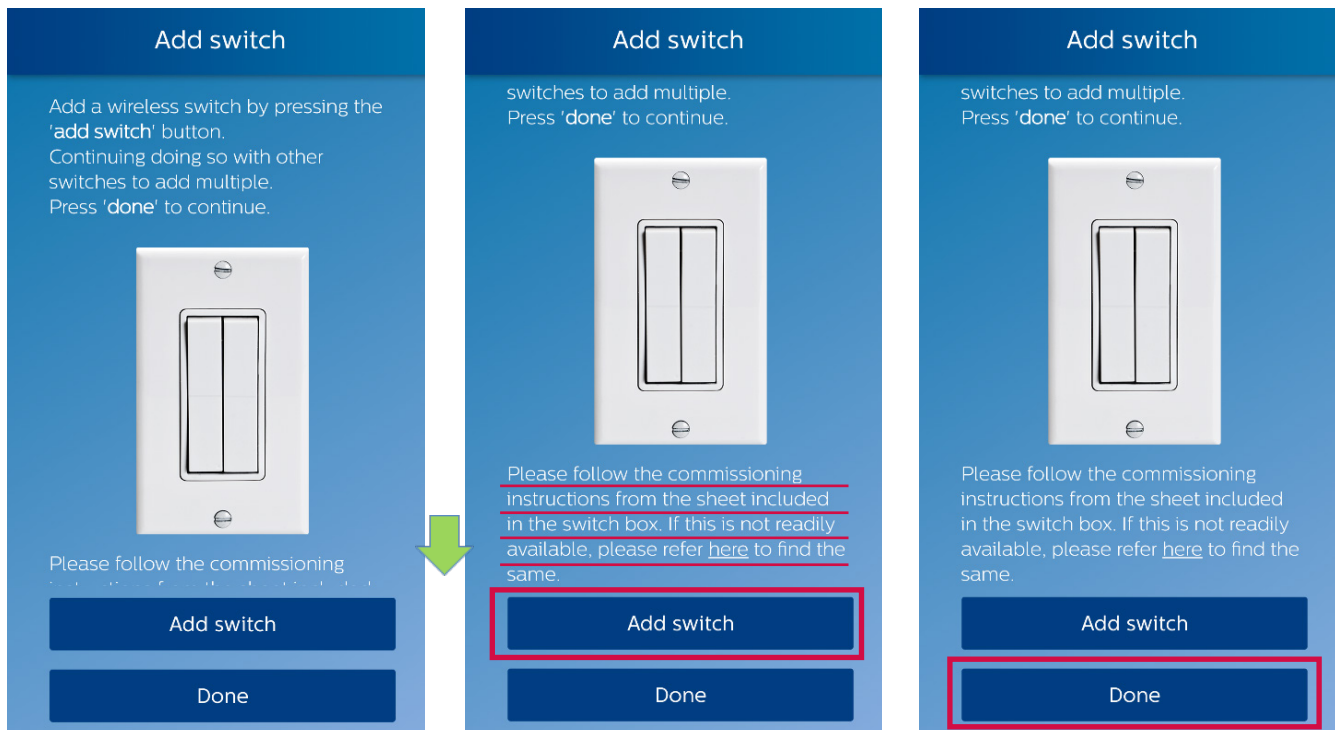


### Create a new group and add wireless switches to the group.

Follow the flow of app to create a new group.



To add a wireless switch to the group, press the “Add switch” button. Refer to the EasySense data sheets at [www.philips.com/easysense](http://www.philips.com/easysense) for compatible switches. Also refer to the commissioning instructions specific to that manufacturer’s switch. During commissioning, the light will blink twice when the switch finds a match to the Zigbee channel of the EasySense. After successfully adding a switch to the group, continue the rest of the steps of the app to complete creating the group.



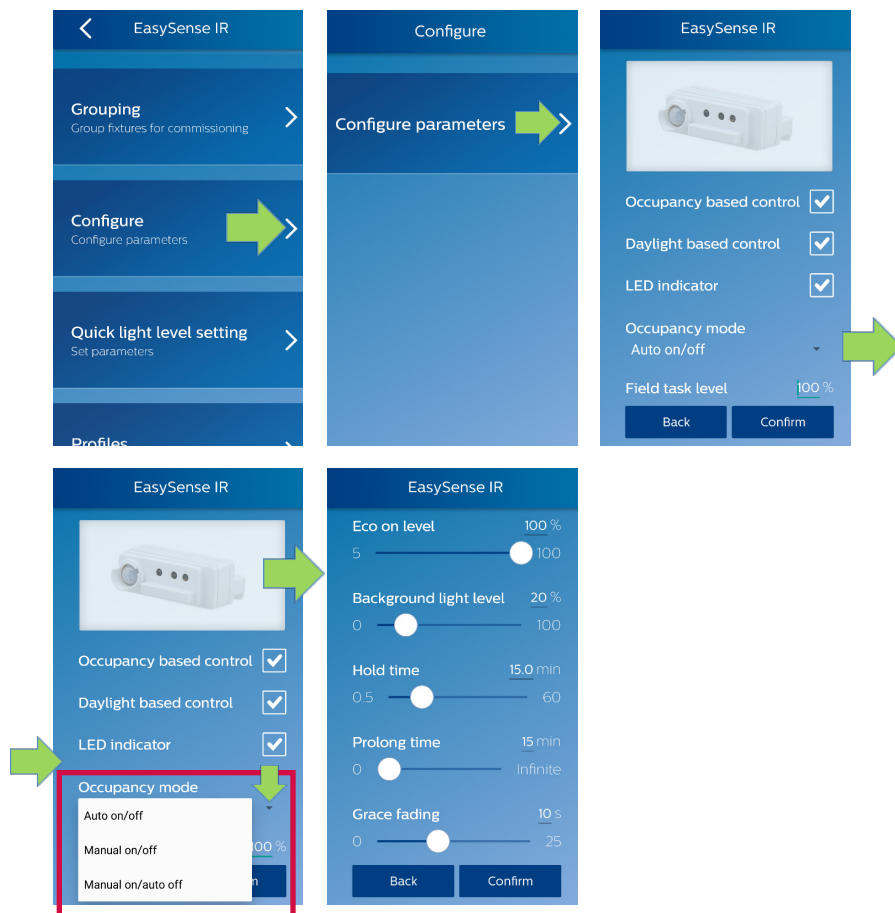
### Add a new fixture or switch to an existing group

Aim the IR port of the smartphone to one of the fixtures in the existing group and hit “Create new group.” Then add fixture or switch the same way as when creating a new group.

### Configure sensor parameters

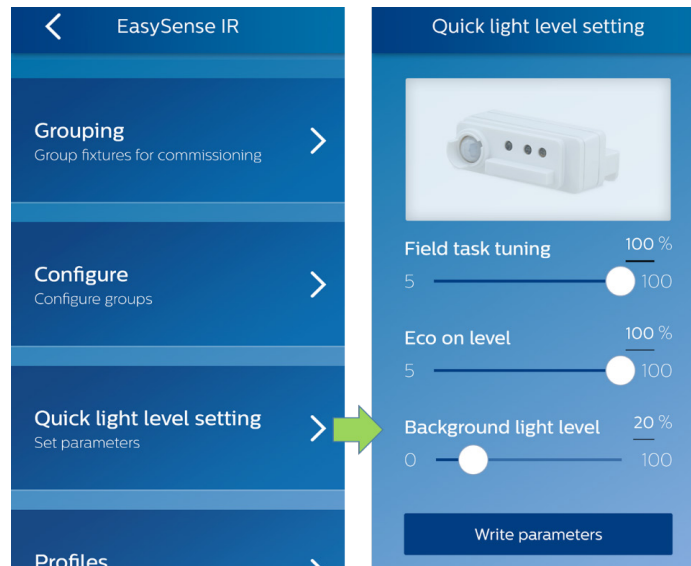
The sensor parameters that can be configured are listed below:

- Occupancy based control (Enable/Disable)
- Daylight based light control (Enable/Disable)
- LED indicator (Enable/Disable)
- Occupancy mode: Auto-on/off, Manual-on/off or Manual-on/auto-off
- Field task level: in percentage of the maximum power level of the fixture
- Eco-on level: in percentage of the maximum power level of the fixture
- Background light level: in percentage of the maximum power level of the fixture
- Hold time
- Prolong time
- Grace fading time

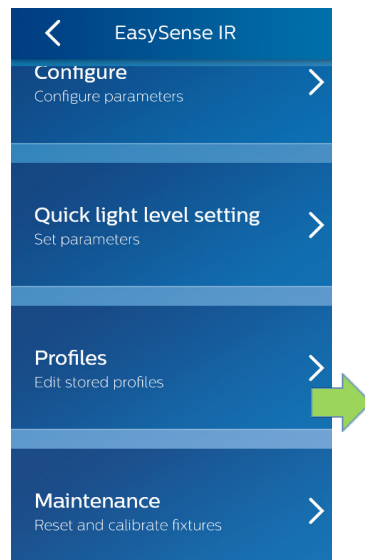


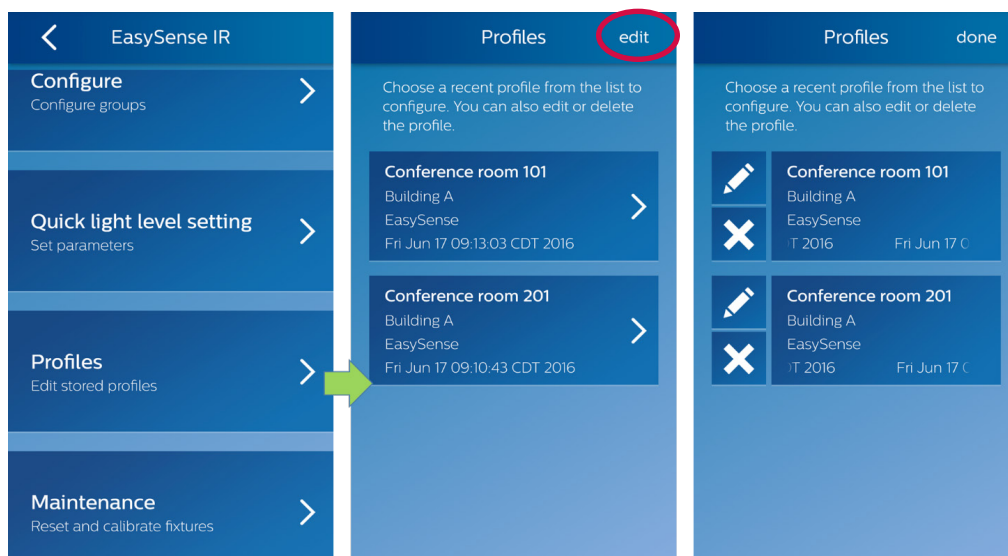
### Quick light level setting

The EasySense IR app provides an option to quickly configure light level related parameters – task tuning level, background light level and eco-on level – without configuring from a full list of the parameters. NOTE: Eco-on level must be configured to a level between the field task tuning level and background light level.



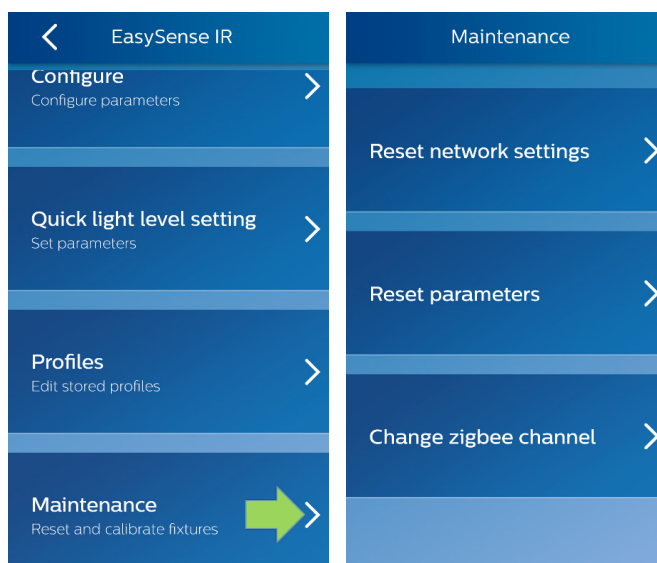
### Use a stored profile to configure sensor or edit/remove a profile





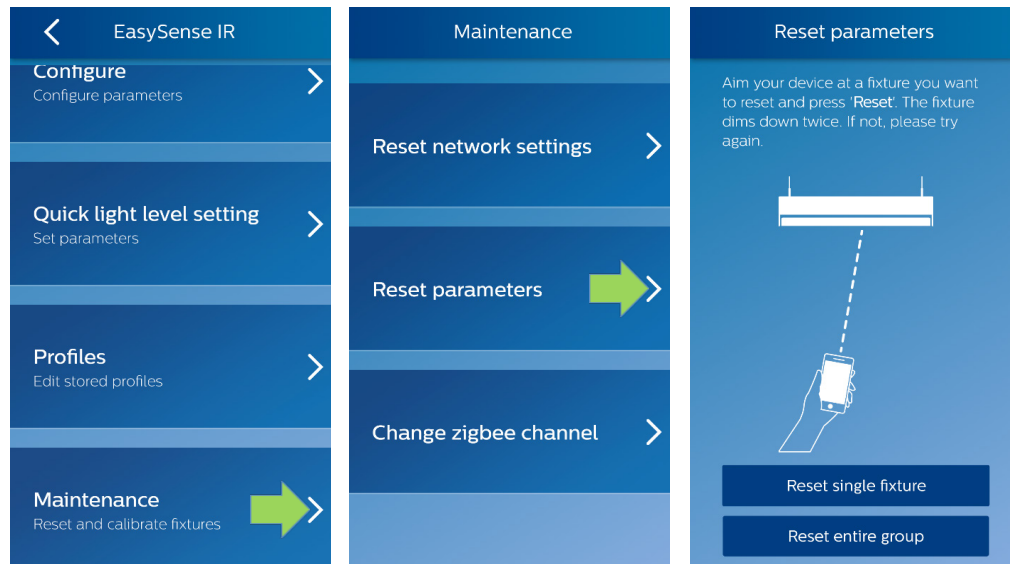
### Reset network settings

Go to "Maintenance" -> "Reset network settings." Point the phone at the target fixture and perform the reset -> command. Note that the reset command only removes the fixture from the group; it does not change any parameter settings of the EasySense sensor in that fixture.



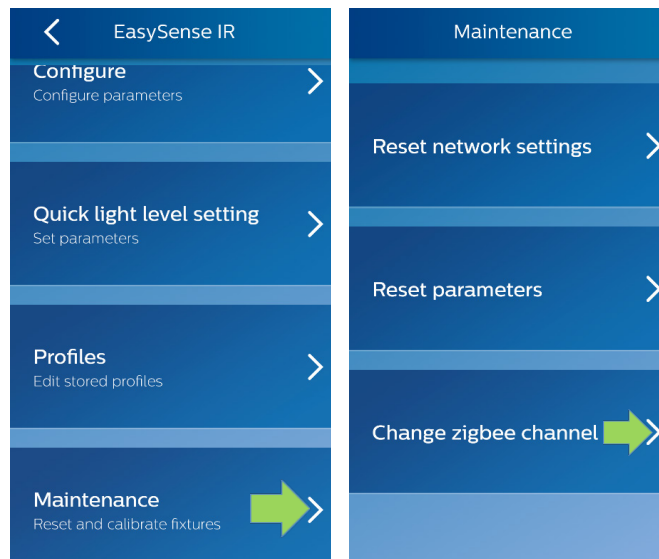
## Reset parameters

Go to “Maintenance” -> “Reset parameters.” Select whether you prefer to reset a single fixture or an entire group. Point the phone at the target fixture and perform the reset command. The fixture or group of fixtures get reset to factory default settings.



## Change Zigbee channel of a fixture

The EasySense IR app also offers an option to change the Zigbee channel of fixture(s) if there is interference, “Maintenance -> “Change zigbee channel.”

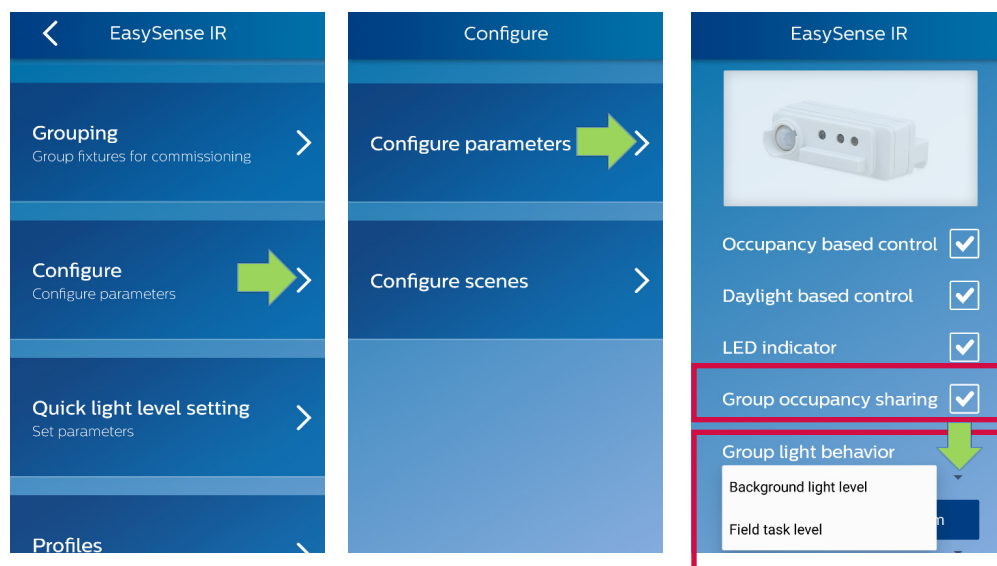


## EasySense IR app – SNS200 specific functionalities (not available in SNS102)

### Configure SNS200 sensor specific parameters (not available at SNS102)

The SNS200 sensor specific parameters that can be configured are listed below:

- Group occupancy sharing (Enable/Disable)
- Group light behavior: Background light level, field task level



### Configure scenes (not available in SNS102)

Scenes can be easily configured for single fixtures or entire groups.

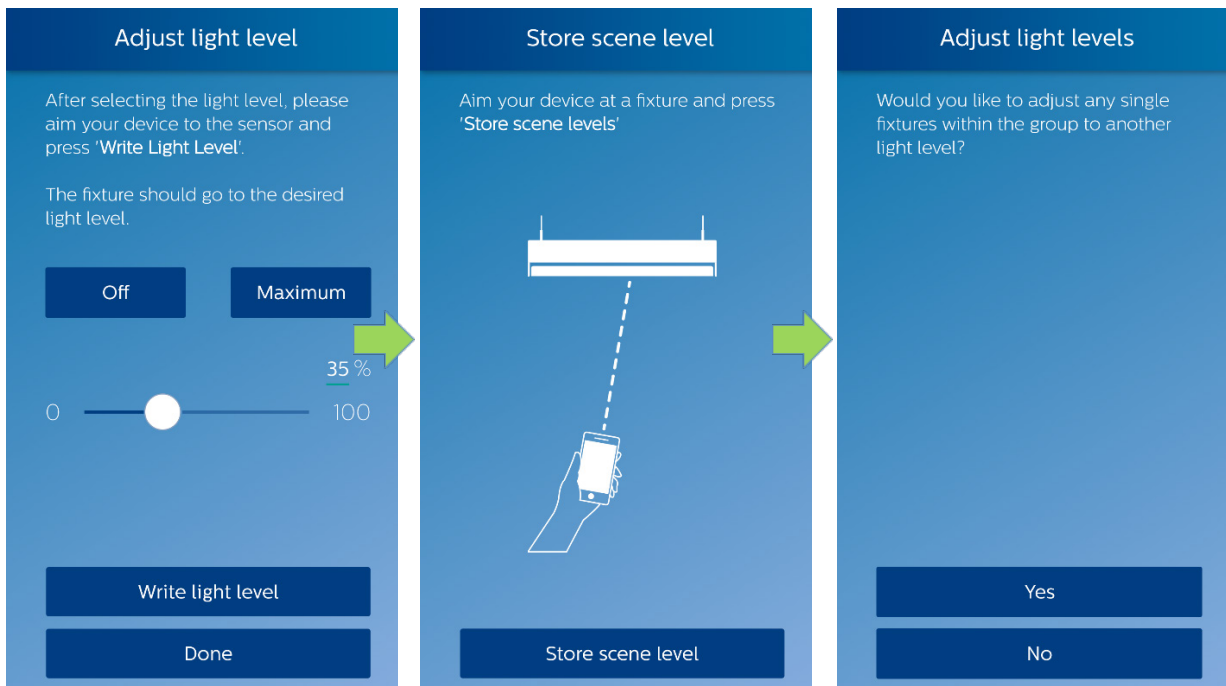


The scenes are selectable via the scene buttons of the switches associated either to fixture or an entire group.

In any case, the configuration proceeds through the “Adjust light level” screen that enables the user to select desired light level for the selected scene.

#### *Configure scenes for single fixtures*

After choosing the single fixture adjusted light level for the selected scene, the actions for storing the scene level and associating it to the switch must be executed as represented in the sequence below.

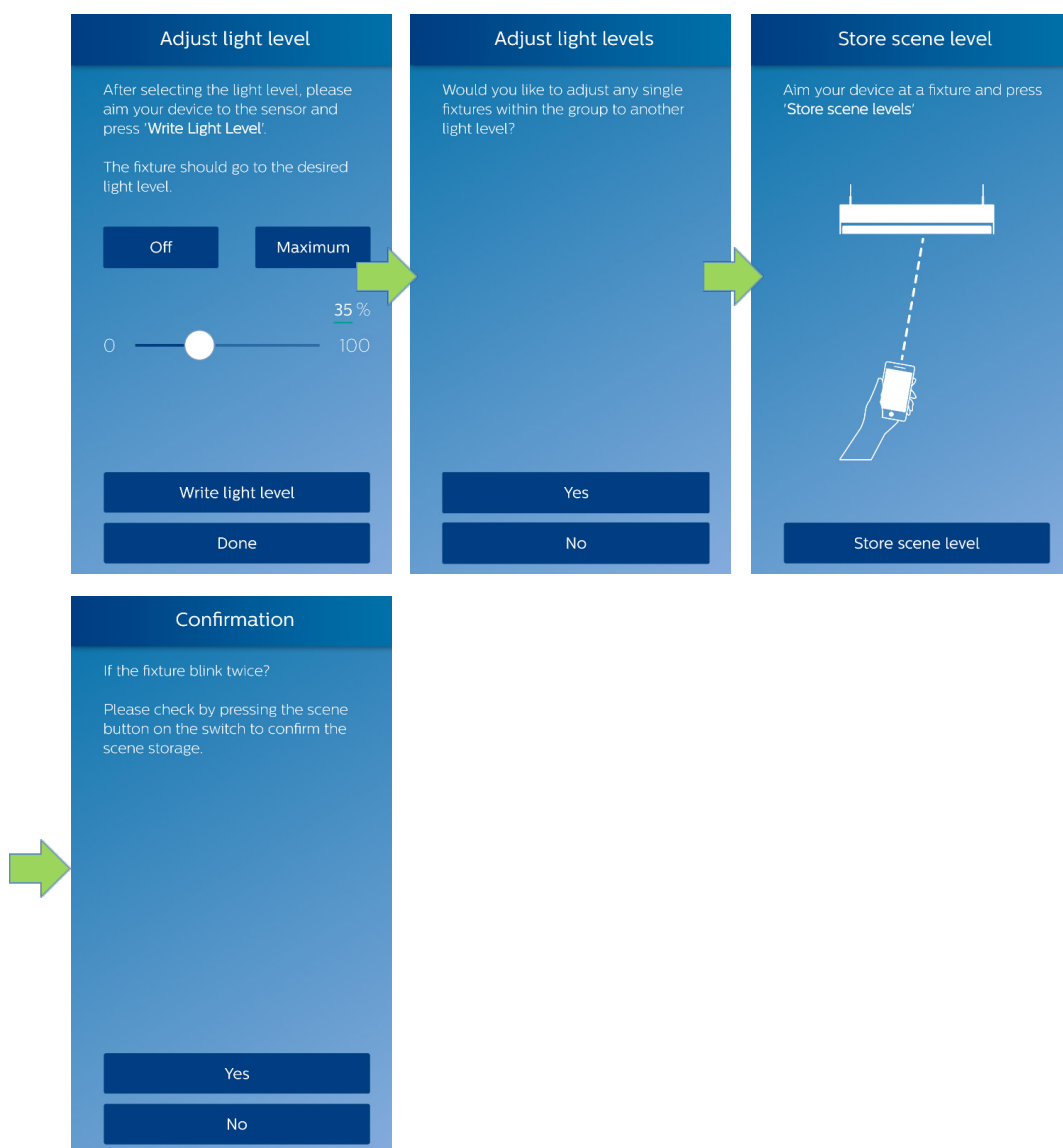




### Configure scenes for entire groups

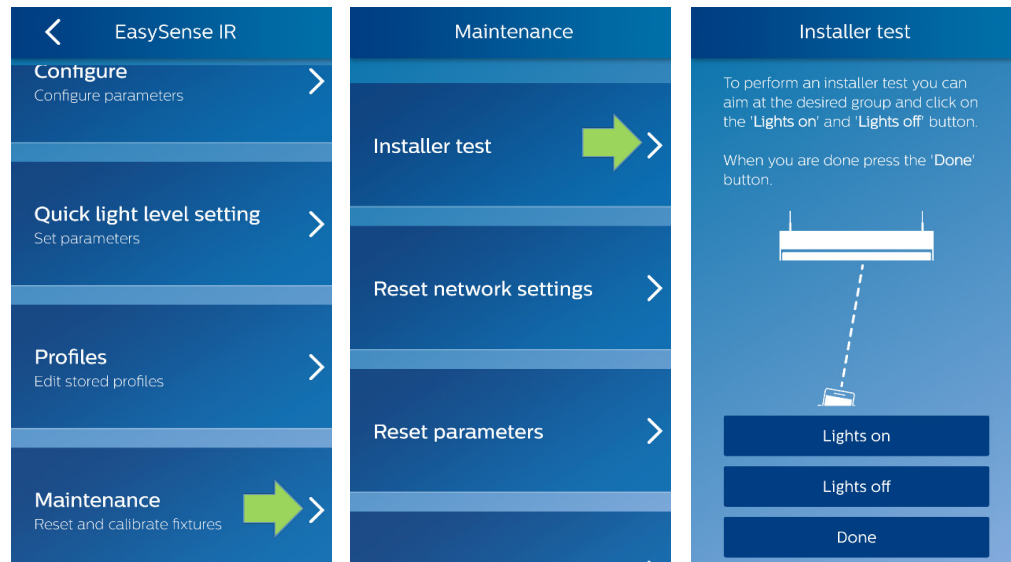
After choosing the entire group adjusted light level for the selected scene, the user has the option then to adjust the light level of any specific single fixture inside the entire group.

The actions for storing the scene level and associating it to the switch must be executed re represented in the sequence below.



### Installer test (not available in SNS102)

The user can test the fixtures working as an entire group by turning the lights on and off as described in the following sequence.

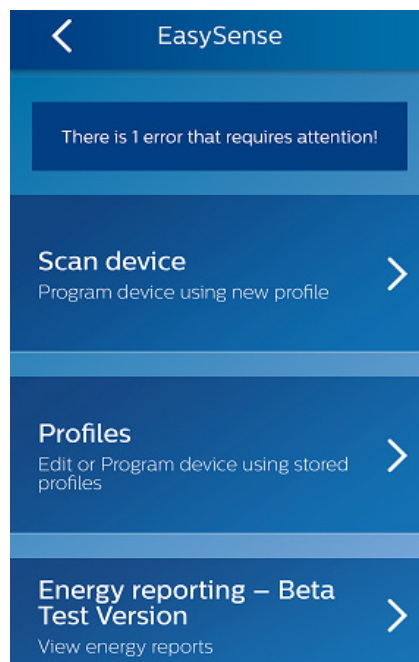


## Troubleshooting tips/system messages

- Every time you program an EasySense, the app will try to upload the related data to the Philips Lighting database. If you are working offline, you will see regular reminders that you should connect to Wi-Fi as soon as it's convenient.
- As soon as you connect to Wi-Fi, after working offline, the app will upload the data for any units that you have programmed. If you see the messages below, click RETRY to initiate the upload.
- You will see this message when it has been up to seven days since your phone has been refreshed with the latest data from the Philips Lighting database.

NOTE: You can ALWAYS click past these warning messages and continue to work with Philips field apps. To keep your data current, you should connect to Wi-Fi on a regular basis.

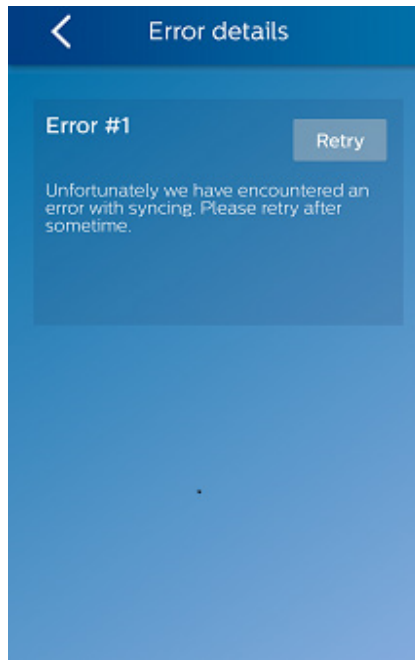
### Message



### Explanation

Error message received if it has been up to seven days since your last upload.

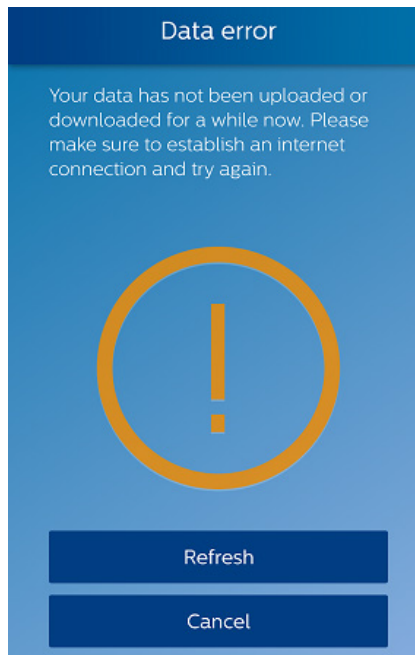
**Message**



**Explanation**

Clicking on the error message generates a reminder to connect to Wi-Fi.

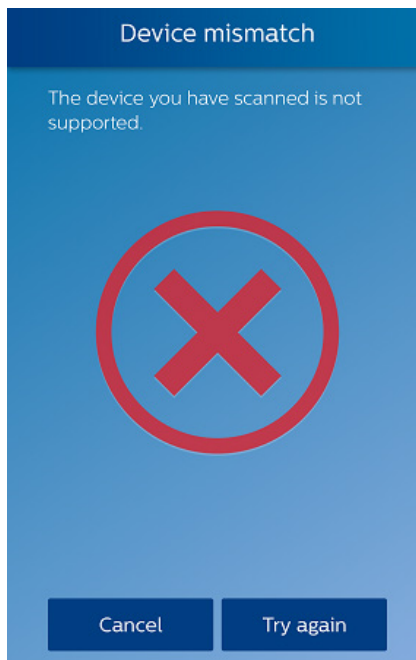
**Message**



**Explanation**

If it has been seven or more days since your last upload, you will see this message.

### Message



### Explanation

If you see this message, first try connecting to Wi-Fi to refresh the database on your phone. Scan the unit again. If you still see the message after the refresh, the unit in question is not supported by the app.



©2016 Koninklijke Philips N.V. All rights reserved. Philips reserves the right to make changes in specifications and/or to discontinue any product at any time without notice or obligation and will not be liable for any consequences resulting from the use of this publication.

PLT-16247UM 10/16 philips.com

Philips Lighting  
North America Corporation  
10275 W. Higgins Road  
Rosemont IL 60018  
Tel: 800-322-2086  
Fax: 888-423-1882  
Customer/Technical Service:  
800-372-3331  
OEM Support: 866-915-5886

Philips Lighting Canada Ltd.  
281 Hillmount Rd.  
Markham, ON,  
Canada L6C 2S3  
Tel. 800-668-9008