



Application Inspiration

Retail banking branches & banking
head office LED lighting



PHILIPS

Important information

before using this quick reference guide



This Application Inspiration Guide has been created to give some suggestions for developing an LED lighting proposal – taking into account most areas that may have to be lit within retail banking branches and head office environments.

Light has a profound effect on how we feel and plays a vital role in creating a healthy workplace. Daylight controls our natural biorhythms, influences our mood and creates a sense of wellbeing. But daylight alone is not sufficient in most indoor spaces, artificial light is also needed to produce the right light levels.

Inadequate lighting affects employees' wellbeing and can also result in eye strain, fatigue and poor performance, particularly in roles involving problem solving and concentration, which can be a major cause for concern for your clients.

Our solutions can help people stay connected with the world outside, boosting vitality and improving performance.

We have made three lighting design suggestions for each typical retail banking branch and head office – all of them utilising state of the art LED solutions.

These example lighting design solutions come in three levels, standard, advanced and premium – offering flexibility for you and your client.

Standard design offers functional lighting to meet office norms and lighting standards, whilst offering a degree of energy savings compared to conventional office lighting.

Advanced design offers all the benefits of Standard design, with an enhanced level of style and comfort through LED lighting.

Premium design showcases the ultimate LED applications for companies who really wish to enhance their brand image, identity and environment.

In addition to these suggested lighting schemes for each area, we have included other solutions in the appendices as follows:

Controls: add flexibility to all areas and maximise savings by employing a lighting management strategy using lighting controls. Create ambience and colour scenes to stimulate mood, reduce energy consumption and carbon emissions and increase comfort for staff – all through the power of controls. See further information on controls solutions in the appendices.

Luminous Textile: bring spaces alive with this revolutionary product. Make a statement in any area by creating a 'live' feature wall – stimulate creativity, enhance branding or simply allow flexibility within spaces. To find out more about Luminous Textile, see more information in the appendices.

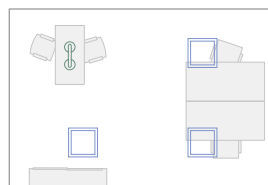
All the lighting design suggestions featured in this brochure are based on the European Lighting Standard for Indoor Workplaces EN 12464-1 and calculated on a ceiling height of 2.8m.

For each area within the guide, we have created:

Isolux diagram showing the luminous distribution per room suggestion



Plan view detailing luminaire positioning and room layout



Product selection description key and e-cat reference





Introduction

How LED lighting can help improve your or your client's retail banking business

From the moment a customer walks into one of your branches they are experiencing your brand. How they feel about that experience will have a direct effect on how loyal they feel as a customer and even how successfully they will rate you as a financial services provider.

This is not new thinking. What might be more surprising however is the considerable effect that lighting can play to enhance brand experience, to reassure and relax customers and to help instill them with the confidence that they are being valued as customers.

Retail Branches – Front of House

Key customer areas and front of house spaces can be transformed by the introduction of Philips LED lighting schemes. This brochure highlights three of the different options available to you.

Retail Branches – Back of House

Equally important are back of house schemes – where controllable Philips LED lighting can enhance feelings of wellbeing in staff, reduce incidences of errors and increase productivity.

Head Office

Our experience in lighting corporate headquarters and other office spaces with multiple requirements means we can advise on everything from reception to car park.

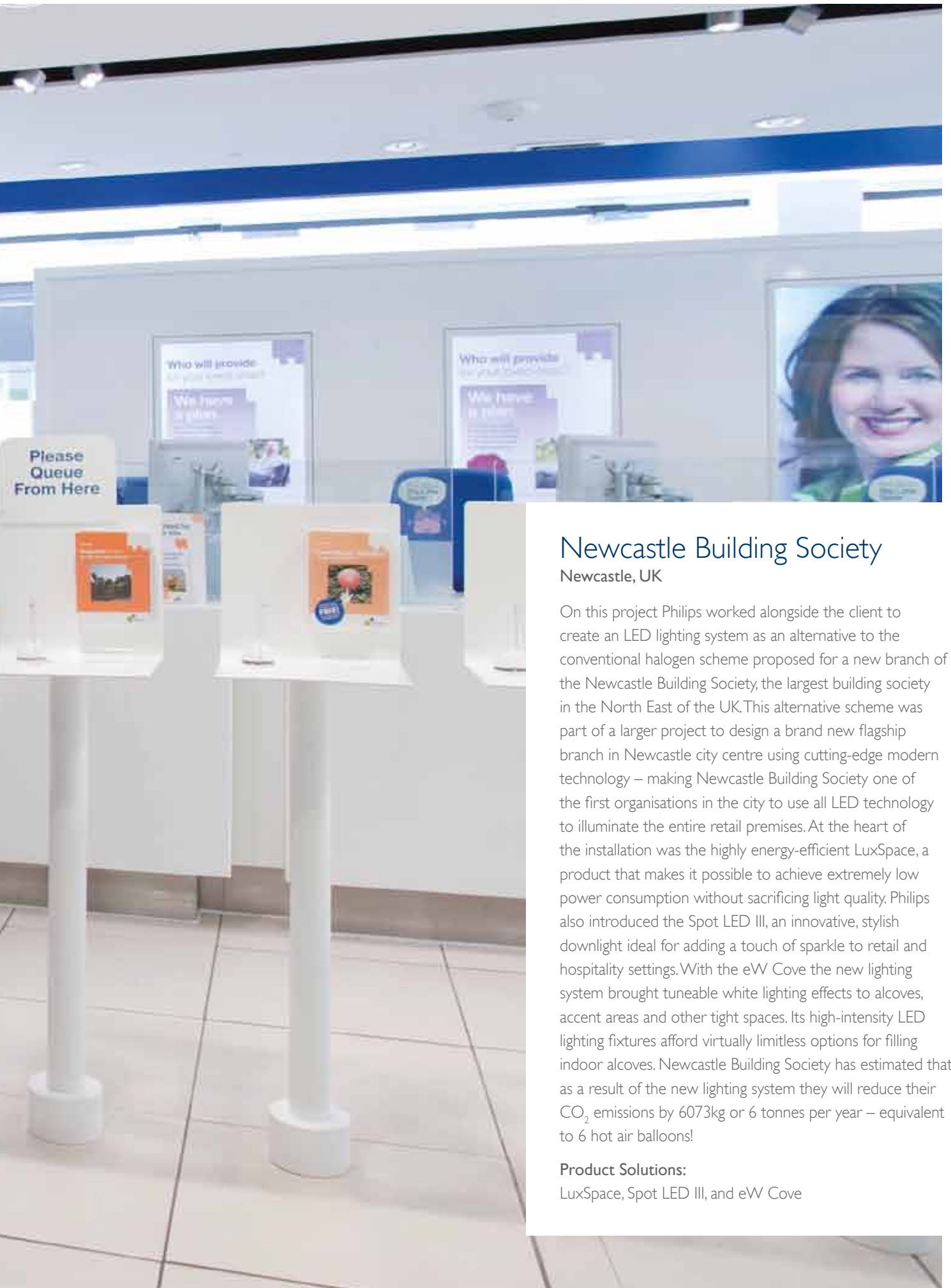
Lighting controls

Our experience here, both inside and outside the office, can help you take advantage of energy saving solutions like presence detection and daylight harvesting, where a combination of daylight and artificial light can be used to reduce energy use and lower costs.

Contents

02	Information on how to use this guide	20	Head Office Space
04	Introduction	70	Control options
06	Case study	72	Luminous Textile
08	Retail Branch – Front of House space	74	Top tips for specifying LED's
14	Retail Branch – Back of House space		





Newcastle Building Society

Newcastle, UK

On this project Philips worked alongside the client to create an LED lighting system as an alternative to the conventional halogen scheme proposed for a new branch of the Newcastle Building Society, the largest building society in the North East of the UK. This alternative scheme was part of a larger project to design a brand new flagship branch in Newcastle city centre using cutting-edge modern technology – making Newcastle Building Society one of the first organisations in the city to use all LED technology to illuminate the entire retail premises. At the heart of the installation was the highly energy-efficient LuxSpace, a product that makes it possible to achieve extremely low power consumption without sacrificing light quality. Philips also introduced the Spot LED III, an innovative, stylish downlight ideal for adding a touch of sparkle to retail and hospitality settings. With the eW Cove the new lighting system brought tuneable white lighting effects to alcoves, accent areas and other tight spaces. Its high-intensity LED lighting fixtures afford virtually limitless options for filling indoor alcoves. Newcastle Building Society has estimated that as a result of the new lighting system they will reduce their CO₂ emissions by 6073kg or 6 tonnes per year – equivalent to 6 hot air balloons!

Product Solutions:

LuxSpace, Spot LED III, and eW Cove



Retail Branch – Front of House

If you want to impress, the front of house is the place to start. Visitors will make decisions about your bank based on their initial reaction. It goes without saying that the atmosphere should be welcoming, but it should also reflect the way you do business. Lighting can help guide customers' journeys – helping to make them feel relaxed and secure when they're involved in making financial transactions. It also creates the right welcome for staff.

Creating the right ambience

Initial impressions count. When customers first walk into a branch or arrive at a reception area, you can create appeal with attractive, dynamic lighting that will enhance their expectations and put them at ease. From dramatic, vibrant schemes that reflect corporate colours to soft ambience designed to soothe the senses, we have the right solution for every front

of house style. With a combination of our dynamic lighting solutions and intuitive controls you can create a fluid ambience that reacts to natural light levels. Colourful accents can guide visitors to the reception desk or make seating areas more inviting. Add to that intelligent controls and you can enjoy welcome savings too.



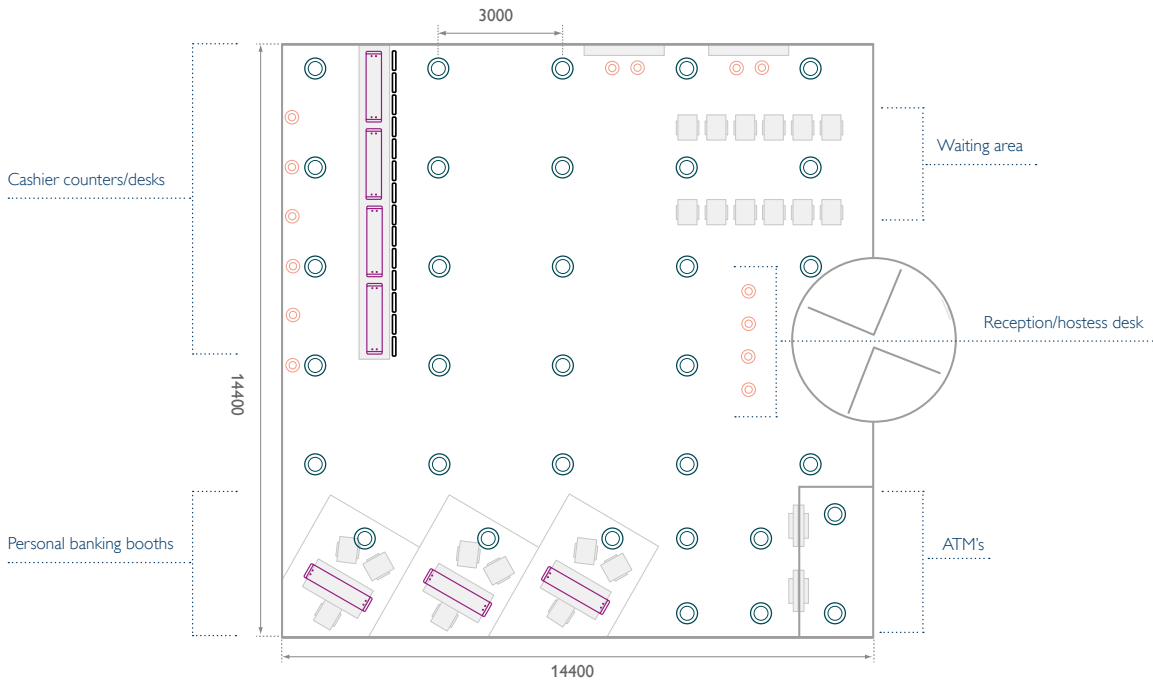
Retail Branch – Front of House Standard

The Standard design uses downlights to provide the general lighting and square pendants above the reception area to draw more attention. The personal banking booths use a combination of a downlight and pendant luminaires for a more private atmosphere.

Isolux diagram



Plan view



Luminaires used

All dimensions in millimetres



- eWCove MX PowerCore® (white)**
Along underside of reception desk
- A maintenance free, cost effective, dimmable, high-luminance cove system
 - Highly versatile, end to end locking connectors for continuous streams of light to achieve curves on more complex geometries
 - Capable of 180° rotation
 - Can be installed into mounting clips or continuous profile track



- LuxSpace**
Recessed, general lighting
- Replacement for conventional downlight applications using CFL or halogen equivalents
 - Delivers consistent light output, stable colour performance and high colour rendering.
 - Easy to install with a long lifetime
 - Full dimming capabilities



- SmartForm LED**
Suspended above reception desk and above desks in personal booths
- Fresh and modern design – very slim housing, only 47mm deep
 - State-of-the-art LED lighting – saving energy
 - High-efficiency optical covers, offering inspiring light effects
 - Possibility to add lighting controls – increase the energy savings by presence and daylight control



- Zadora LED Spot**
In front of revolving door / on shelves / on wall behind reception
- Up to 85% energy savings
 - Simple kit format for easy installation
 - Fixed and adjustable versions
 - Flexibility to change lamps by means of spring fasteners
 - Featuring MASTER LEDspot GU10 7W for improved cost of ownership compared to a 50W halogen
 - Long life for low maintenance

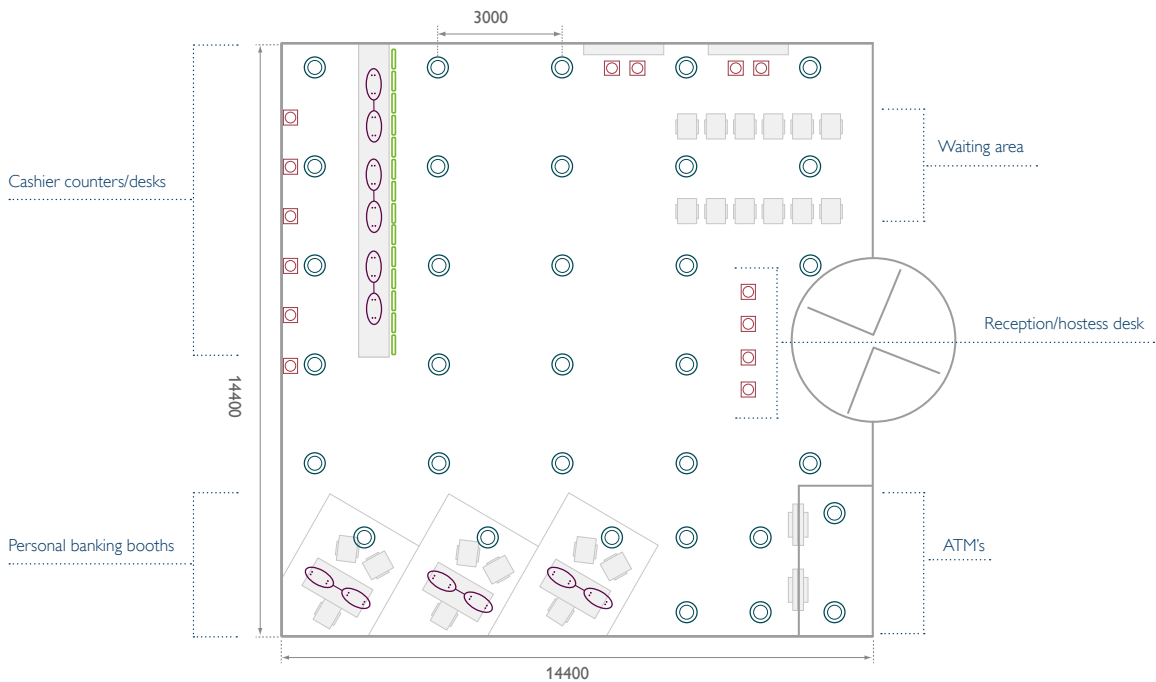
Retail Branch – Front of House **Advanced**

The Advanced design uses the same basic setup as the standard design but uses inspiring elliptical luminaires above the reception area and adds a colored cove to provide a more dynamic environment.

Isolux diagram



Plan view



Luminaires used

All dimensions in millimetres



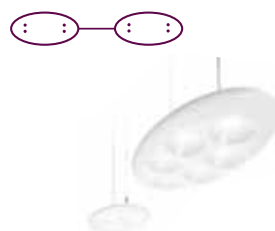
iColorCove MX PowerCore® (colour)
Along underside of reception desk

- Dynamic RGB lighting effects suited for alcove, accent areas and tight spaces
- End to end mounting for continuous mounting streams of light to achieve curves or more complex geometries
- High intensity luminaire
- Capable of 180° rotation in 10° increments



LuxSpace
Recessed, general lighting

- Replacement for conventional downlight applications using CFL or halogen equivalents
- Delivers consistent light output, stable colour performance and high colour rendering.
- Easy to install with a long lifetime
- Full dimming capabilities



LumiStone
Suspended above reception desk and above desks in personal booths

- Most energy efficient office-norm compliant suspended LED luminaire
- Inspiring design with elliptical modules



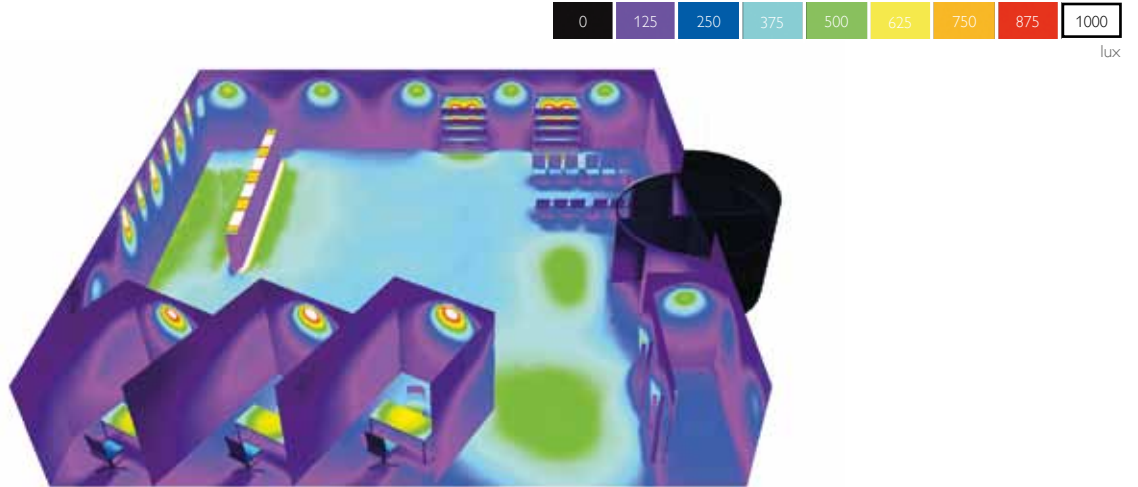
TurnRound Spot
In front of revolving door / on shelves / on wall behind reception

- Substantial energy saving compared to standard halogens
- Compact design for improved flexibility
- Fixed and adjustable versions
- Excellent alternative to 50W low voltage halogen, giving comparable light quality
- Long life for low maintenance

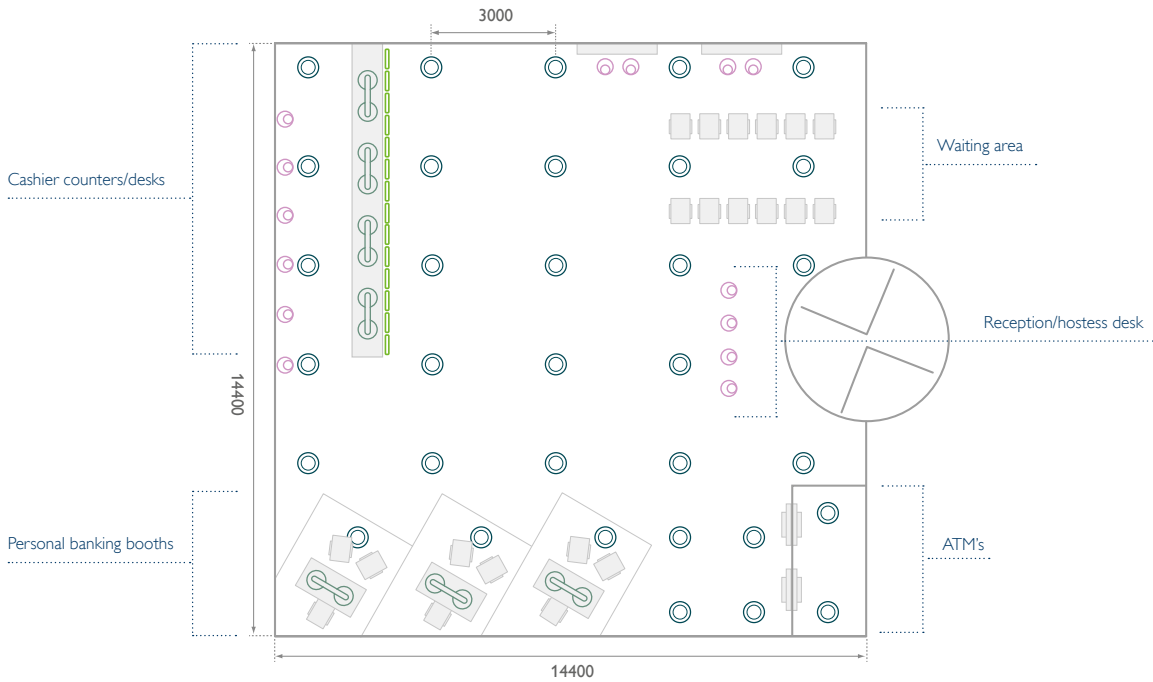
Retail Branch – Front of House Premium

The Premium design uses high end design luminaires above the reception desk and in the personal banking booths. Also high end spots are used to light the back wall to create a more welcoming entrance to the space.

Isolux diagram



Plan view



Luminaires used

All dimensions in millimetres



iColorCove MX PowerCore® (colour)
Along underside of reception desk

- Dynamic RGB lighting effects suited for alcove, accent areas and tight spaces
- End to end mounting for continuous mounting streams of light to achieve curves or more complex geometries
- High intensity luminaire
- Capable of 180° rotation in 10° increments



LuxSpace
Recessed, general lighting

- Replacement for conventional downlight applications using CFL or halogen equivalents
- Delivers consistent light output, stable colour performance and high colour rendering.
- Easy to install with a long lifetime
- Full dimming capabilities



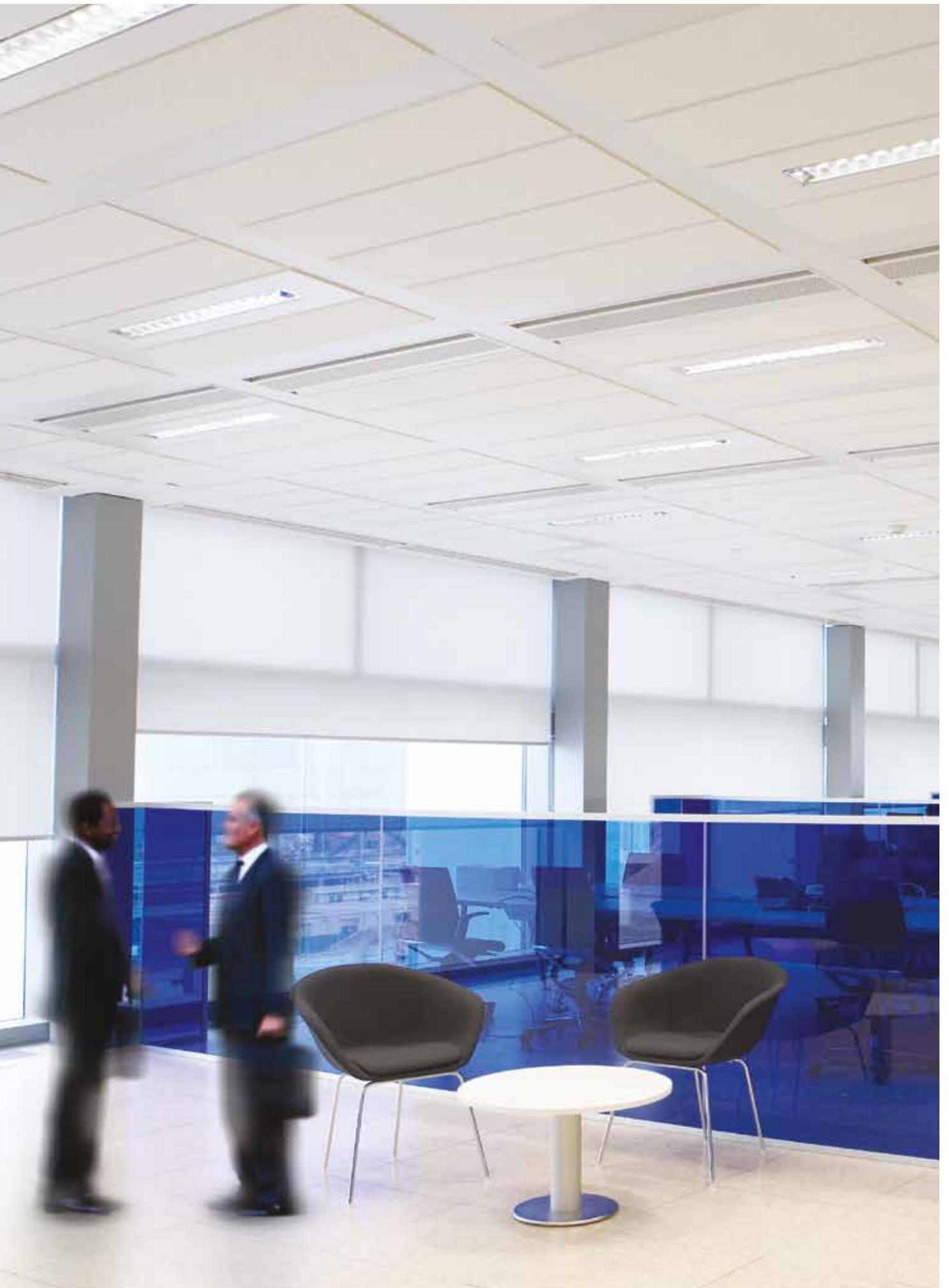
StyliD Spot
In front of revolving door / on shelves / on wall behind reception

- Full flexible solution with replaceable covers and bezel
- Natural light source appearance due to reflector-LED technology
- Significant energy saving
- No lamp replacement needed due to long lifetime of the product



DaySign Pendant Twin
Suspended above reception desk and above desks in personal booths

- Super thin
- Non glaring light emitting surface
- High Light Output – (50W halogen)
- For general and accent lighting





Retail Branch – Back of House

Equally as important as front of house, back of house spaces will benefit from the kind of flexibility that only Philips LEDs and lighting controls can offer. Energy saving opportunities exist when you employ intelligent systems. For instance presence detection that allows areas that are only used occasionally to remain in low light until activated, or daylight harvesting, where a combination of daylight and artificial light are used to good effect.

Good lighting pays dividends

The connection between good lighting and wellbeing has been well documented in recent times. We know now that because of a third receptor in the brain, we feel better and more energised in certain light conditions like sunlight. This effect can be replicated using LEDs, for example when blue light is used in offices during winter months, to mimic the kind of light only usually seen during summer. Also the incidence of fewer mistakes

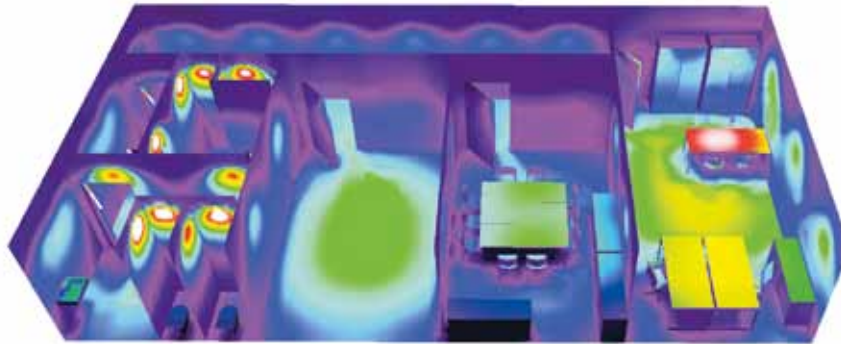
made under improved lighting is very impressive – all the more relevant in a banking environment. Employees who feel better and more alert will be happier and more productive, which is good for your business and will help contribute to your bottom line. Add to this effective control systems that use light only when needed and you have a sustainable lighting solution that works for all staff, saves energy and reduces your carbon footprint.



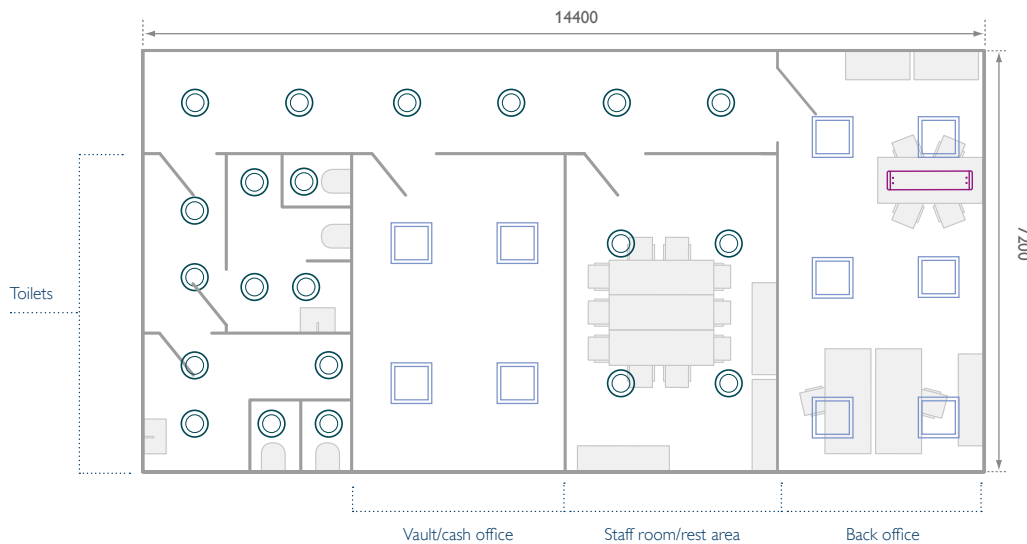
Retail Branch – Back of House Standard

The Standard design is based on standard square general lighting luminaires in the office area, with downlights in the circulation areas.

Isolux diagram



Plan view



Luminaires used

All dimensions in millimetres



LuxSpace

Recessed general lighting, in corridor, staff room area, and toilet

- Replacement for conventional downlight applications using CFL or halogen equivalents
- Delivers consistent light output, stable colour performance and high colour rendering.
- Easy to install with a long lifetime
- Full dimming capabilities



SmartForm LED Recessed

In office and vault area

- Energy saving
- Inspiring light effects
- Highly versatile family
- Office-norm compliant



SmartForm LED

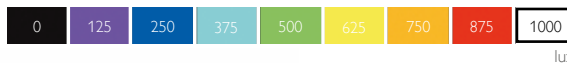
Suspended above desk in office

- Fresh and modern design – very slim housing, only 47mm deep
- State-of-the-art LED lighting – saving energy
- High-efficiency optical covers, offering inspiring light effects
- Possibility to add lighting controls – increase the energy savings by presence and daylight control

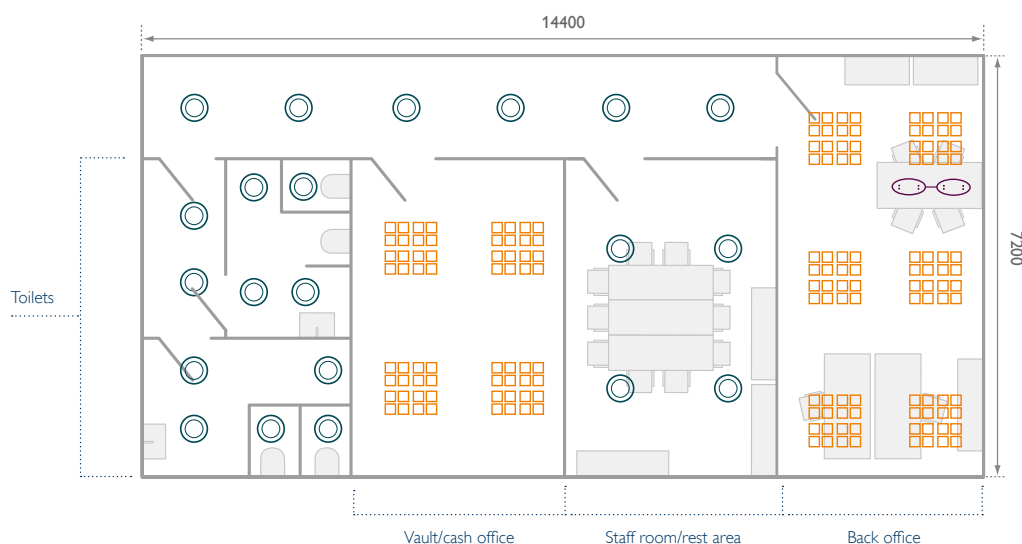
Retail Branch – Back of House **Advanced**

In the Advanced design the standard square luminaires are replaced by high performance luminaires and an inspiring elliptical pendant luminaire is used in the office.

Isolux diagram



Plan view



Luminaires used

All dimensions in millimetres



LuxSpace

Recessed general lighting, in corridor, staff room area, and toilet

- Replacement for conventional downlight applications using CFL or halogen equivalents
- Delivers consistent light output, stable colour performance and high colour rendering.
- Easy to install with a long lifetime
- Full dimming capabilities



PowerBalance

In office and vault area

- Offers substantial energy saving compared to TL-5 luminaires of a similar output
- Most energy efficient office-norm compliant LED luminaire
- Allowing for significant cost savings
- Office norm compliant
- Additional energy saving up to 50% in combination with controls



LumiStone

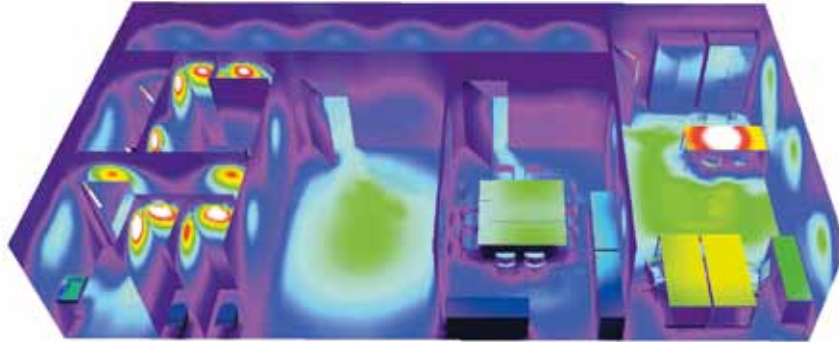
Suspended desk in office

- Most energy efficient office-norm compliant suspended LED luminaire
- Inspiring design with elliptical modules

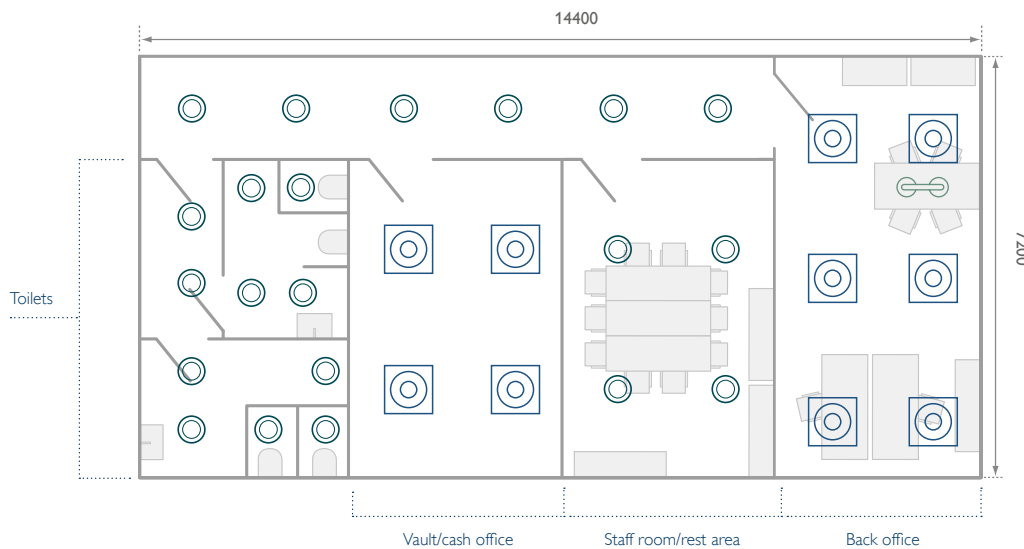
Retail Branch – Back of House Premium

In the Premium design the general lighting has been replaced by inspirational high end luminaires, combined with a thin suspended luminaire in the office.

Isolux diagram



Plan view



Luminaires used

All dimensions in millimetres



LuxSpace

Recessed general lighting, in corridor, staff room area, and toilet

- Replacement for conventional downlight applications using CFL or halogen equivalents
- Delivers consistent light output, stable colour performance and high colour rendering.
- Easy to install with a long lifetime
- Full dimming capabilities



DayZone Square

In office and vault area

- Indoor recessed LED luminaire for general illumination
- Helps meet sustainability criteria
- Full dimming capabilities
- Inspiring design & light effect
- High visual comfort
- Energy efficient
- Additional energy saving up to 50% in combination with controls

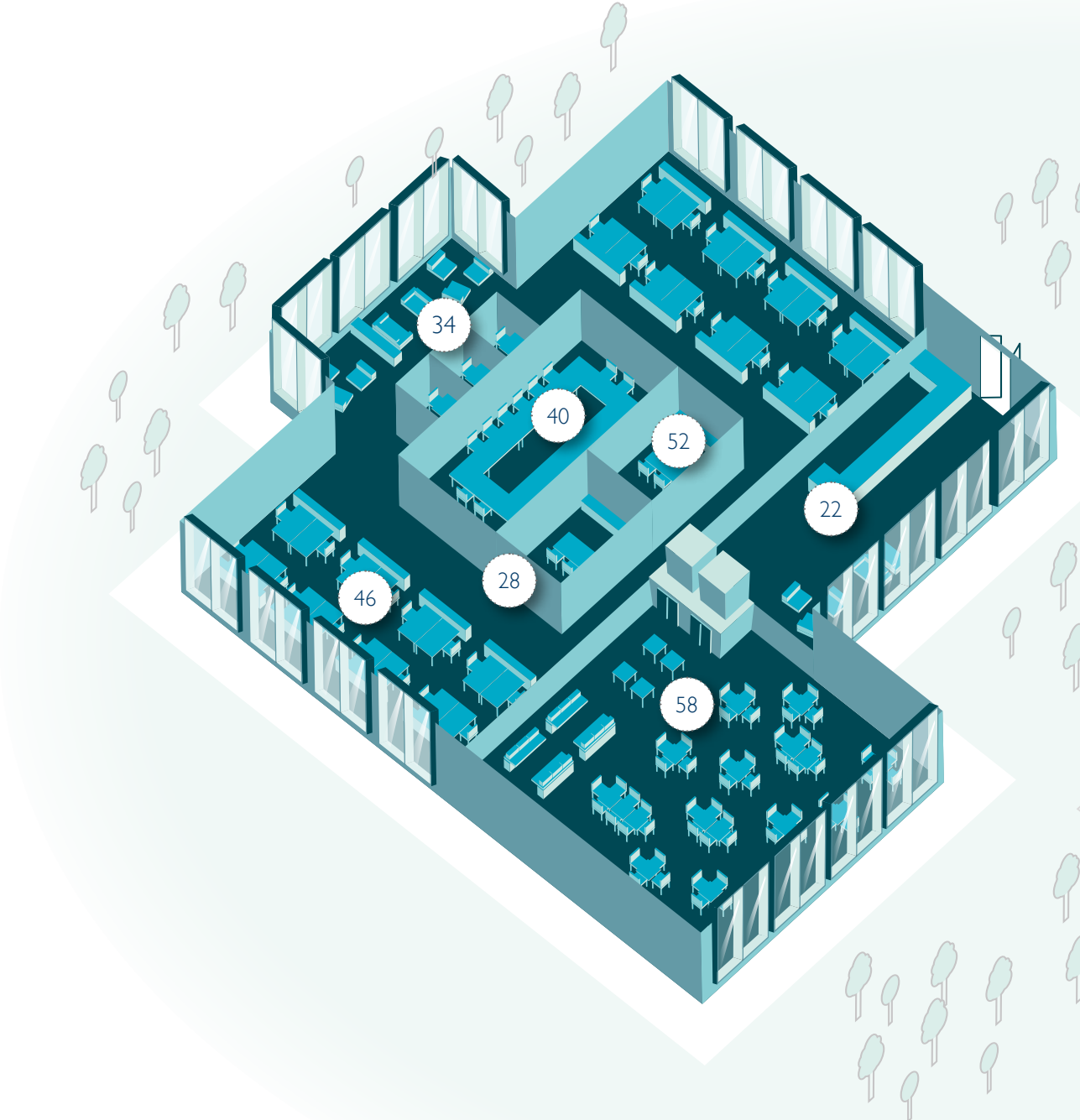


DaySign Pendant Twin

Suspended above desk in office

- Super thin
- Non glaring light emitting surface
- High Light Output – (50W halogen)
- For general and accent lighting





Banking Head Office

22 Reception



- 24 Standard
- 25 Advanced
- 26 Premium

28 Corridors



- 30 Standard
- 31 Advanced
- 32 Premium

34 Breakout Area

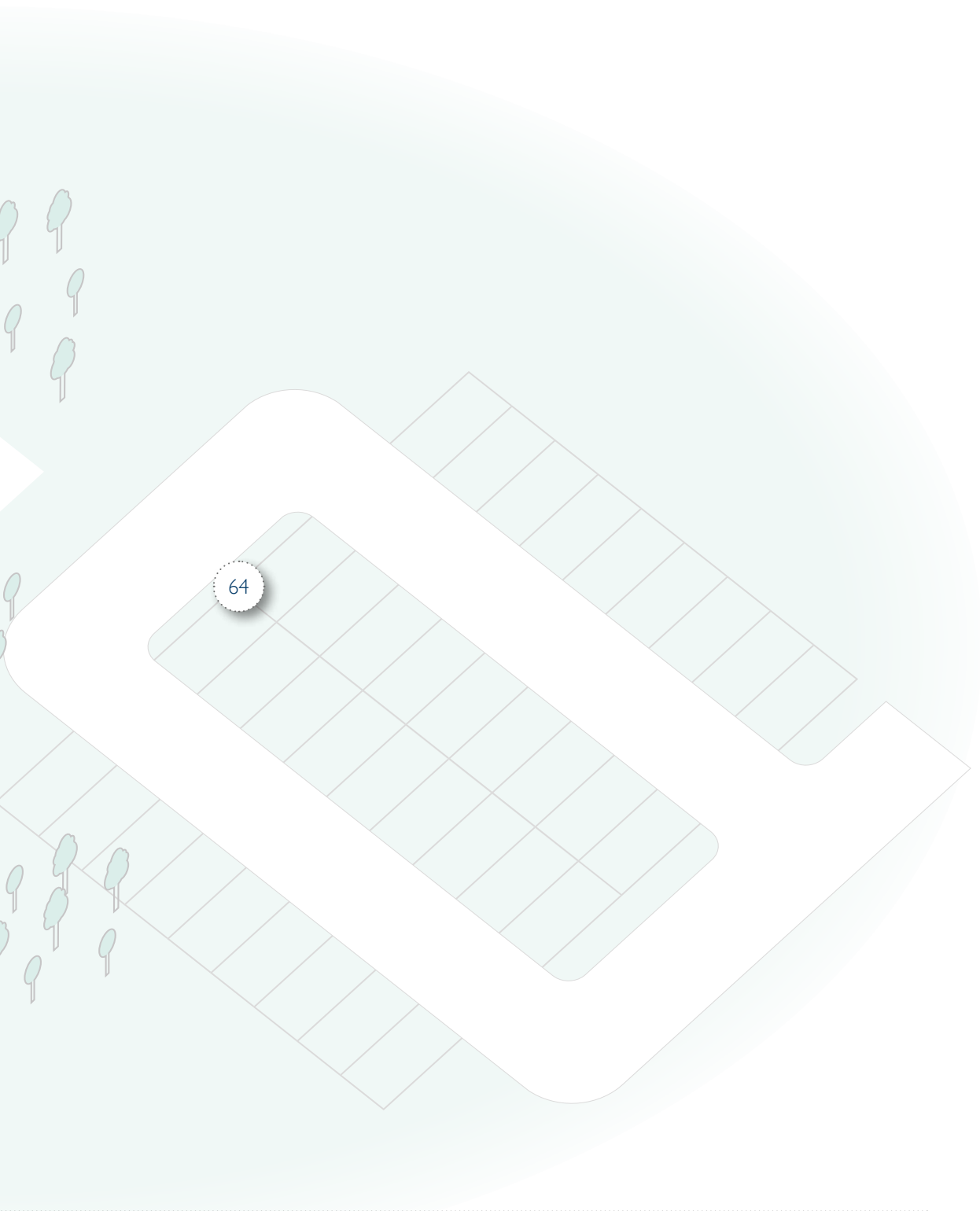


- 36 Standard
- 37 Advanced
- 38 Premium

40 Meeting Room



- 42 Standard
- 43 Advanced
- 44 Premium



46 Open Plan Office



- 48 Standard
- 49 Advanced
- 50 Premium

52 Cell Office



- 54 Standard
- 55 Advanced
- 56 Premium

58 Restaurant



- 60 Standard
- 61 Advanced
- 62 Premium

64 Outdoor

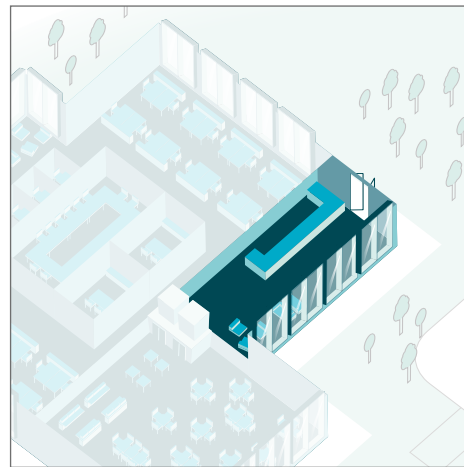


- 66 Standard
- 67 Advanced
- 68 Premium



Reception

Distinct from the high street retail banking environment, corporate office receptions will need to impress just as much, if not more. Visitors to bank headquarters or business banking centres will, just like high street customers, make value judgments about your financial business based on what they see and how they feel. The atmosphere should be welcoming, but it should also reflect the way you work and reflect your brand values. Creative and effective lighting will also send out the right messages to head office staff.

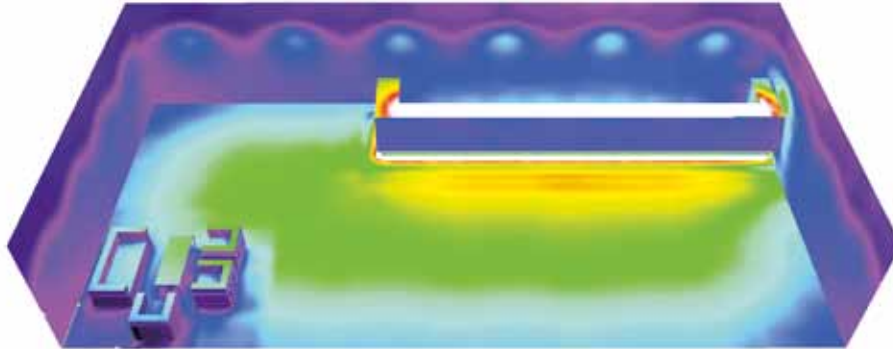


AB Group, Orzinuovi, Italy

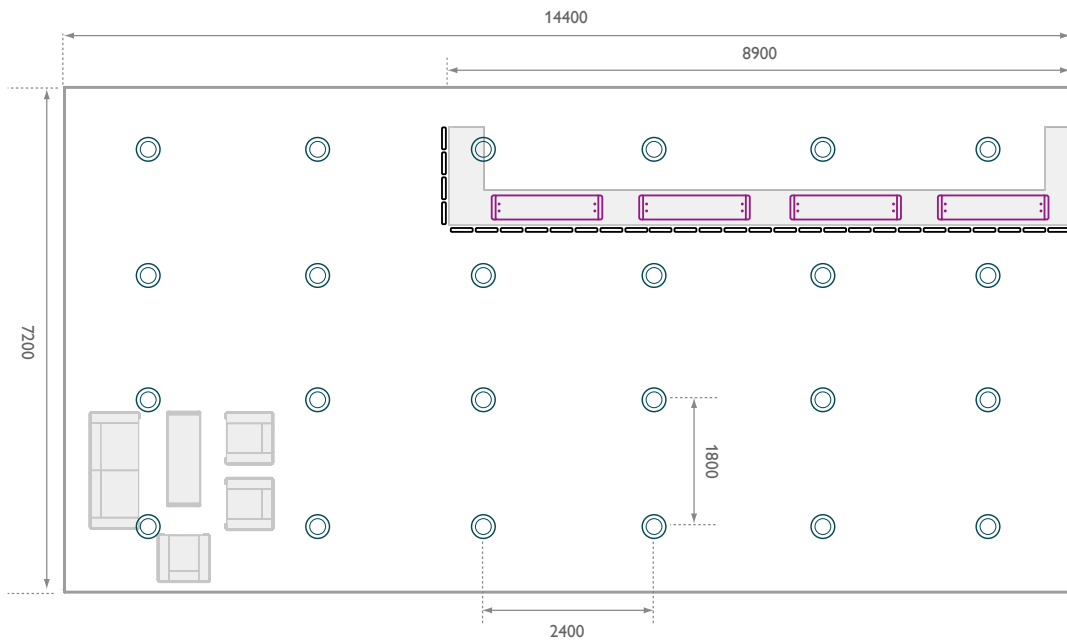
Reception Standard

Our Standard setup uses LED downlights for the general lighting and puts additional focus on the reception desk by using pendant luminaires and a white cove at floor level.

Isolux diagram



Plan view



Luminaires used

All dimensions in millimetres



eWCove MX PowerCore® (white)

Along underside of reception desk

- A maintenance free, cost effective, dimmable, high-luminance cove system
- Highly versatile, end to end locking connectors for continuous streams of light to achieve curves on more complex geometries
- Capable of 180° rotation
- Can be installed into mounting clips or continuous profile track



LuxSpace

Recessed, general lighting

- Replacement for conventional downlight applications using CFL or halogen equivalents
- Delivers consistent light output, stable colour performance and high colour rendering
- Easy to install with a long lifetime
- Full dimming capabilities



SmartForm LED

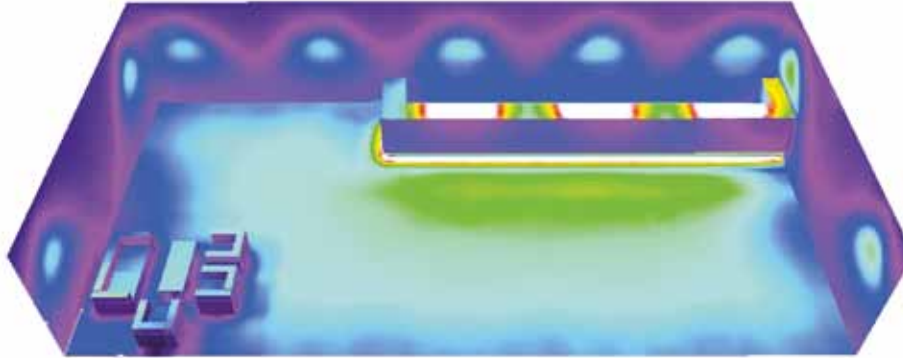
Suspended above reception desk

- Fresh and modern design – very slim housing, only 47mm deep
- State-of-the-art LED lighting – saving energy
- High-efficiency optical covers, offering inspiring light effects
- Possibility to add lighting controls – increase the energy savings by presence and daylight control

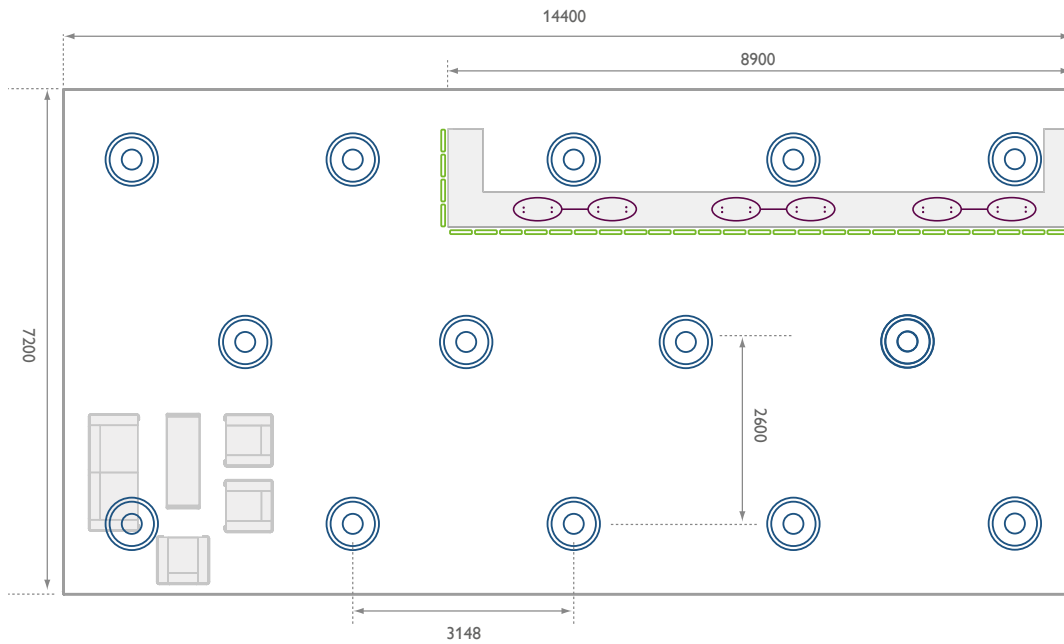
Reception Advanced

A step on from the Standard setup – Advanced uses more inspiring luminaires for both general and reception desk lighting. A personal touch and flexibility to change ambience is added by using colored cove lighting.

Isolux diagram



Plan view



Luminaires used

All dimensions in millimetres



iColorCove MX PowerCore® (colour)

Along underside of reception desk

- Dynamic RGB lighting effects suited for alcove, accent areas and tight spaces
- End to end mounting for continuous mounting streams of light to achieve curves or more complex geometries
- High intensity luminaire
- Capable of 180° rotation in 10° increments



DayZone Round

Recessed, general lighting

- Indoor recessed LED luminaire for general illumination
- Helps meet sustainability criteria
- Full dimming capabilities
- Inspiring design & light effect
- High visual comfort
- Energy efficient
- Additional energy saving up to 50% in combination with controls



LumiStone

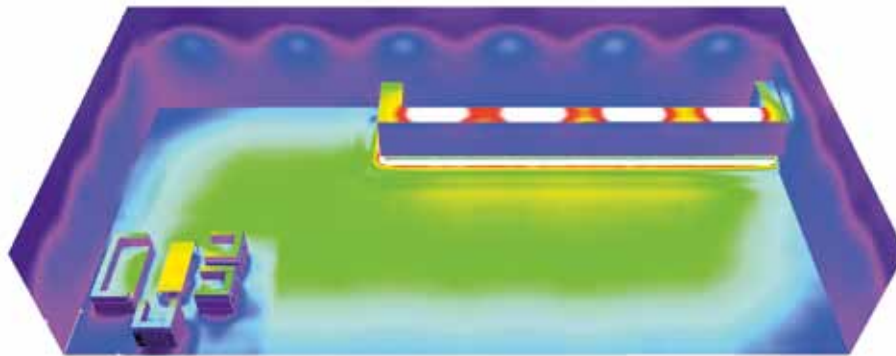
Suspended above reception desk

- Most energy efficient office-norm compliant suspended LED luminaire
- Inspiring design with elliptical modules

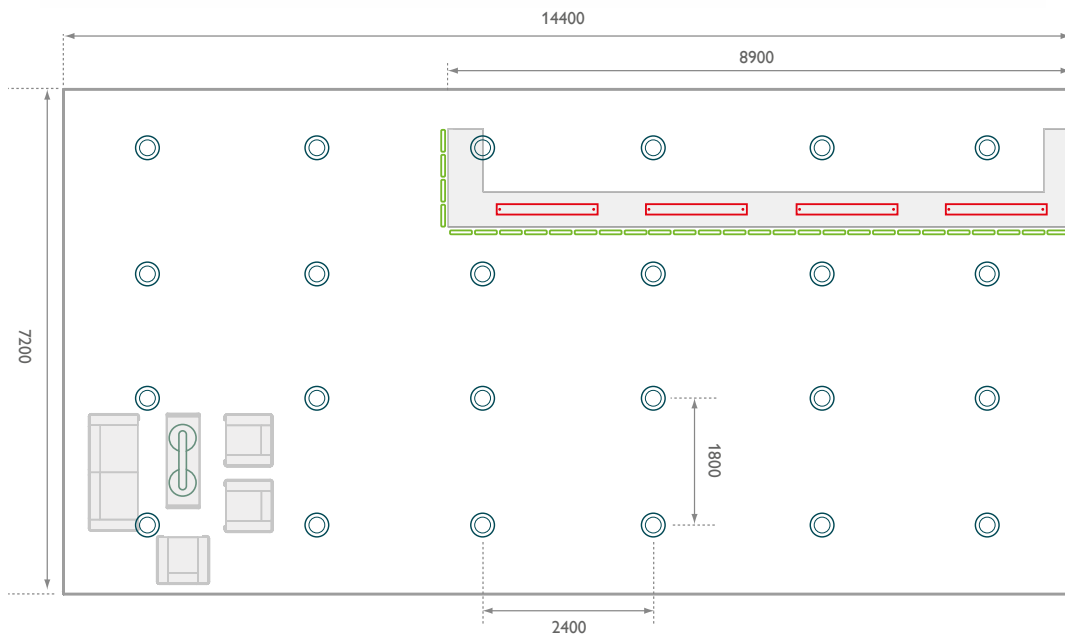
Reception Premium

Our Premium design uses aspects from both the Standard and Advanced design, but also uses sleek pendant luminaires for the reception desk and adds additional thin luminaires above the seating area.

Isolux diagram



Plan view



Luminaires used

All dimensions in millimetres



iColorCove MX PowerCore® (colour)
Along underside of reception desk

- Dynamic RGB lighting effects suited for alcove, accent areas and tight spaces
- End to end mounting for continuous mounting streams of light to achieve curves or more complex geometries
- High intensity luminaire
- Capable of 180° rotation in 10° increments



LuxSpace
Recessed, general lighting

- Replacement for conventional downlight applications using CFL or halogen equivalents
- Delivers consistent light output, stable colour performance and high colour rendering.
- Easy to install with a long lifetime
- Full dimming capabilities



Celino LED
Suspended above reception desk

- Offers comparable light output to TL-5 luminaires with 28W lamps
- Available in 3000K and 4000K
- Range includes Surface and Suspended versions
- All versions DALI dimmable



DaySign Pendant Twin
Suspended above seating area

- Super thin
- Non glaring light emitting surface
- High Light Output – (50W halogen)
- For general and accent lighting





Corridors

Areas in the office that are occupied the least can often waste energy. Our intelligent solutions make corridors and circulation areas feel bright and safe. Compatible with dimming possibilities and presence detection to switch off lighting when it's not needed, they save our planet's precious resources too.

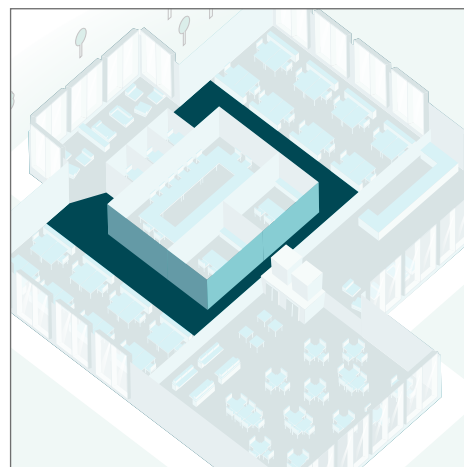
Save energy with light

Corridors are the vital network inside offices that guide people around the building. They can also work as functional spaces, displaying information or artwork to enhance a company's image. But if the lighting stays on when no one is around, your client could be wasting energy for much of the day. And when you consider that lighting accounts for 40% of all electricity use in office buildings, that's a lot of energy to waste.

Our sustainable lighting solutions are a highly-efficient way to keep corridors safe and well lit whenever they're needed. Dimmable LuxSpace luminaires save energy and create ambience. Intelligent sensors like OccuSwitch turn the light off when it's not needed. Sparkling accent lights add the finishing touches, highlighting architectural features and putting artwork in the spotlight.



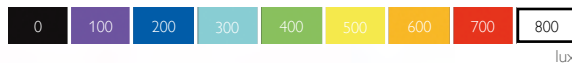
AB Group, Orzinuovi, Italy



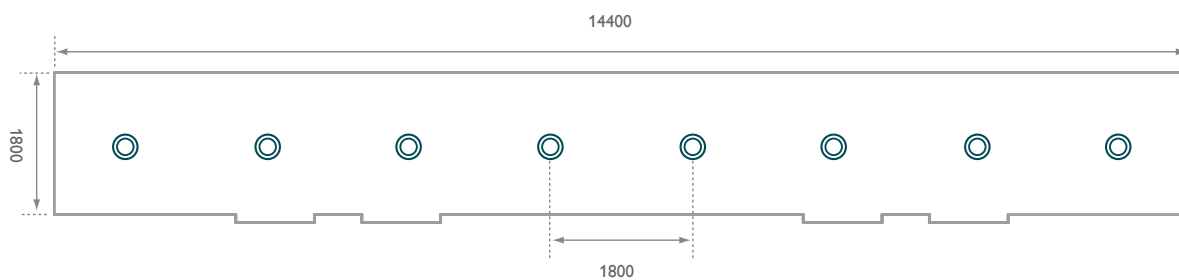
Corridors Standard

Our Standard setup using LED downlights on the central axis of the corridor:

Isolux diagram



Plan view



Luminaires used

All dimensions in millimetres



LuxSpace

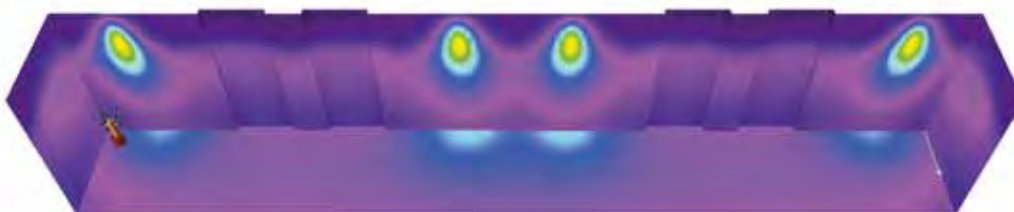
Recessed, general lighting

- Replacement for conventional downlight applications using CFL or halogen equivalents
- Delivers consistent light output, stable colour performance and high colour rendering.
- Easy to install with a long lifetime
- Full dimming capabilities

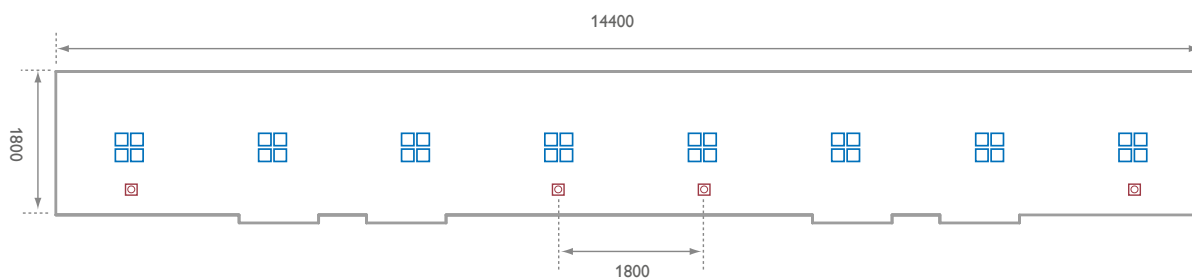
Corridors Advanced

Advanced uses the same principle for general lighting as the Standard design but with a more innovative look and feel. Additionally spots have been added to provide accents.

Isolux diagram



Plan view



Luminaires used

All dimensions in millimetres



PowerBalance Mini

Recessed, general lighting

- Offers substantial energy saving compared to TL-5 luminaires of a similar output
- Most energy efficient office-norm compliant LED luminaire
- Allowing for significant operational cost savings
- Office norm compliant
- Additional energy saving up to 50% in combination with controls



TurnRound Spot

Aimed at wall

- Substantial energy saving compared to standard halogens
- Compact design for improved flexibility
- Fixed and adjustable versions
- Excellent alternative to 50W low voltage halogen, giving comparable light quality
- Long life for low maintenance

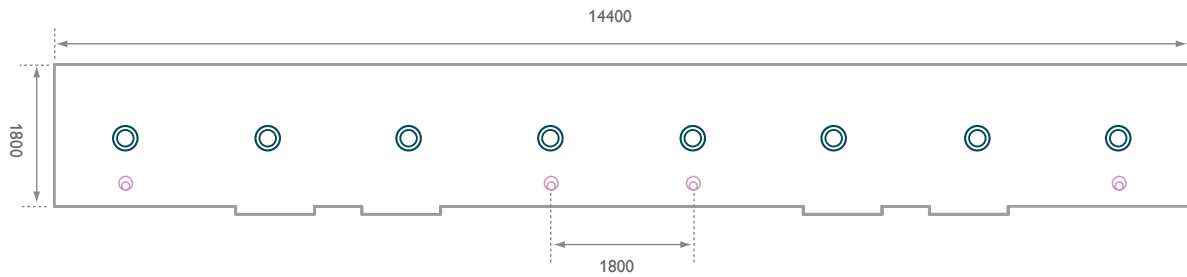
Corridors Premium

Our Premium solution is based on design elements from both Standard and Advanced designs, but uses high end spots to further 'shape' the area.

Isolux diagram



Plan view



Luminaires used

All dimensions in millimetres



LuxSpace

Recessed, general lighting

- Replacement for conventional downlight applications using CFL or halogen equivalents
- Delivers consistent light output, stable colour performance and high colour rendering.
- Easy to install with a long lifetime
- Full dimming capabilities



StyliD Spot

Aimed at wall

- Full flexible solution with replaceable covers and bezel
- Natural light source appearance due to reflector-LED technology
- Significant energy saving
- No lamp replacement needed due to long lifetime of the product





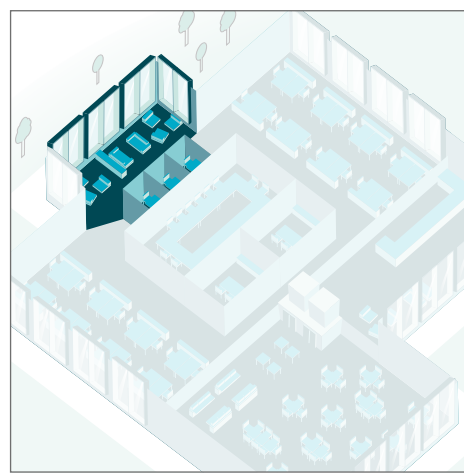
Breakout area

Informal areas with comfortable furnishings and relaxing ambiances are now an integral part of the modern office. Creating a place where people can have some quiet time, or talk with banking colleagues without needing a formal meeting room, improves office life and enhances well-being.

Relaxing minds

Well designed break out spaces can have a positive effect on how people feel at work. Lighting is a powerful way to influence their emotions. By combining good quality lighting with dimming possibilities and glare control to soothe tired eyes and relax busy

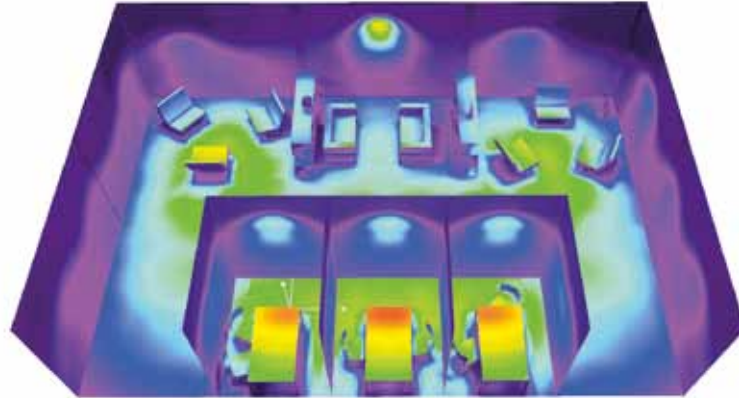
minds. Add accents that create pools of light over seating areas and tables where staff get together and socialise. Breakout solutions that create a totally relaxing ambience to rejuvenate and inspire.



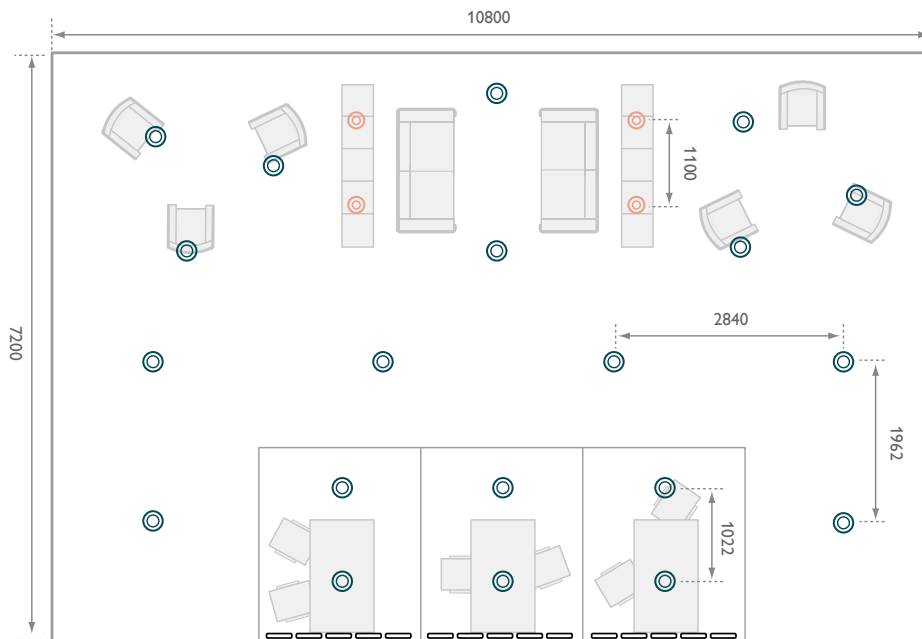
Breakout area Standard

In our Standard solution LED downlight is used for both general lighting and more contrast lighting on the seating area. Several small spots have been added to highlight the separation furniture.

Isolux diagram



Plan view



Luminaires used

All dimensions in millimetres



eWCove MX PowerCore® (white)

Along ceiling of back wall

- A maintenance free, cost effective, dimmable, high-luminance cove system
- Highly versatile, end to end locking connectors for continuous streams of light to achieve curves on more complex geometries
- Capable of 180° rotation
- Can be installed into mounting clips or continuous profile track



LuxSpace

Recessed, general lighting

- Replacement for conventional downlight applications using CFL or halogen equivalents
- Delivers consistent light output, stable colour performance and high colour rendering
- Easy to install with a long lifetime
- Full dimming capabilities



Zadora LED Spot

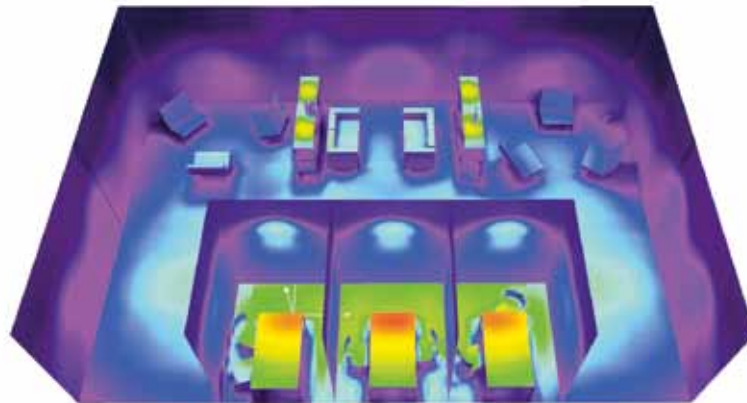
Aimed down

- Up to 85% energy savings
- Available in simple kit format for easy installation
- Fixed and adjustable versions
- Flexibility to change lamps by means of spring fasteners
- Featuring MASTER LEDspot GU10 7W for improved cost of ownership compared to a 50W halogen
- Long life for low maintenance

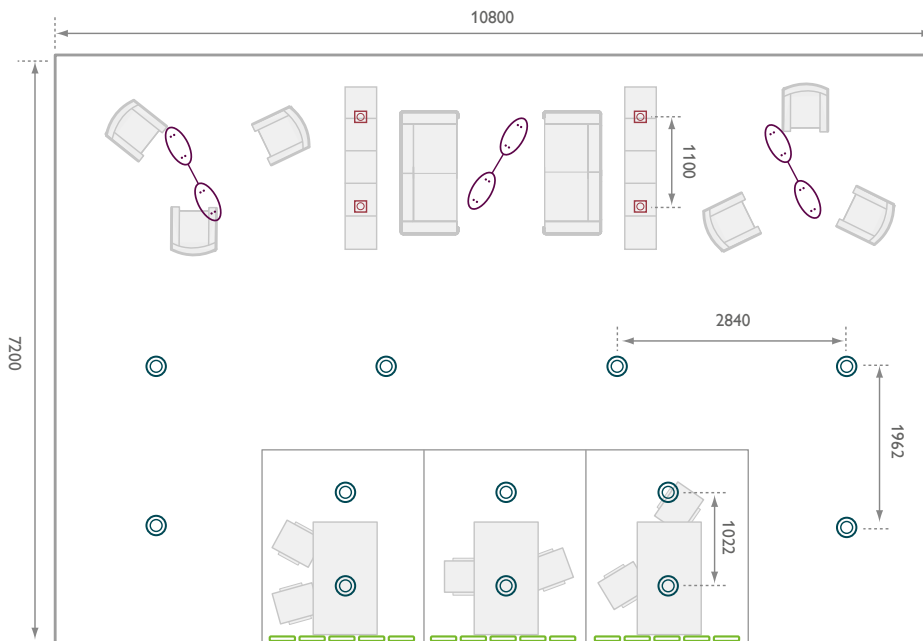
Breakout area **Advanced**

Advanced uses the same general lighting as our Standard design, but with more inspiring elliptical pendant luminaires to light the seating area.

Isolux diagram



Plan view



Luminaires used

All dimensions in millimetres



iColorCove MX PowerCore® (colour)
Along ceiling of back wall

- Dynamic RGB lighting effects suited for alcove, accent areas and tight spaces
- End to end mounting for continuous mounting streams of light to achieve curves or more complex geometries
- High intensity luminaire
- Capable of 180° rotation in 10° increments



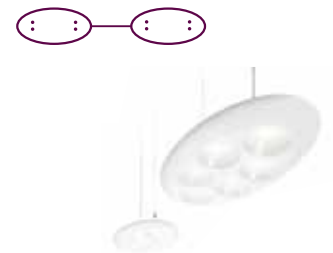
LuxSpace
Recessed, general lighting

- Replacement for conventional downlight applications using CFL or halogen equivalents
- Delivers consistent light output, stable colour performance and high colour rendering.
- Easy to install with a long lifetime
- Full dimming capabilities



TurnRound Spot
Aimed at wall

- Substantial energy saving compared to standard halogens
- Compact design for improved flexibility
- Fixed and adjustable versions
- Excellent alternative to 50W low voltage halogen, giving comparable light quality
- Long life for low maintenance



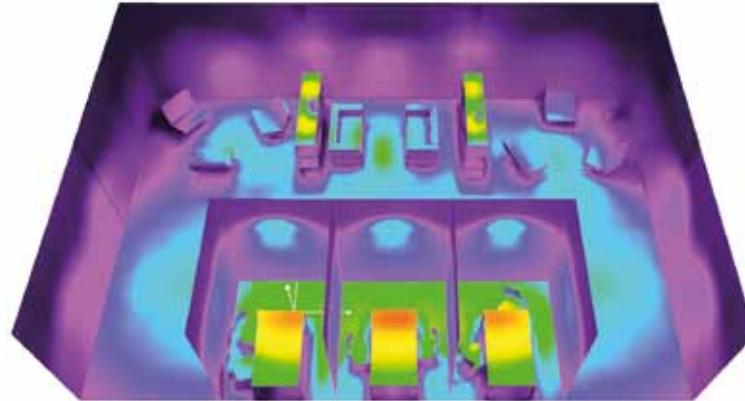
LumiStone
Suspended above seating area

- Most energy efficient office-norm compliant suspended LED luminaire
- Inspiring design with elliptical modules

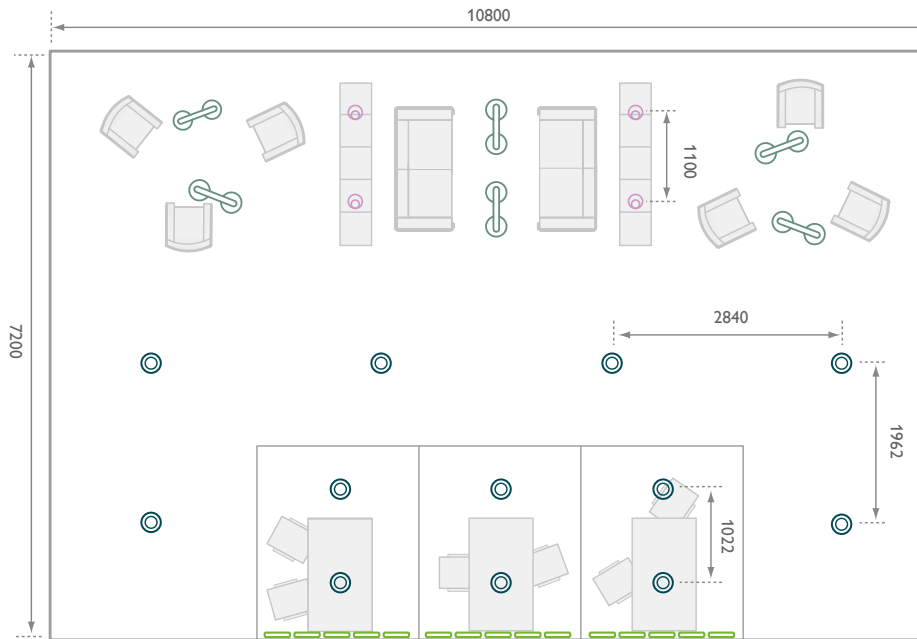
Breakout area Premium

With Premium, general lighting is similar to the Advanced and Standard versions but adds more focus on the seating area by the use of multiple thin pendant luminaires and high-end spots.

Isolux diagram



Plan view



Luminaires used

All dimensions in millimetres



iColorCove MX PowerCore® (colour)
Along ceiling of back wall

- Dynamic RGB lighting effects suited for alcove, accent areas and tight spaces
- End to end mounting for continuous mounting streams of light to achieve curves or more complex geometries
- High intensity luminaire
- Capable of 180° rotation in 10° increments



LuxSpace
Recessed, general lighting

- Replacement for conventional downlight applications using CFL or halogen equivalents
- Delivers consistent light output, stable colour performance and high colour rendering.
- Easy to install with a long lifetime
- Full dimming capabilities



DaySign Pendant Twin
Suspended above seating area

- Super thin
- Non glaring light emitting surface
- High Light Output – (50W halogen)
- For general and accent lighting



StyliD Spot
Aimed at wall

- Full flexible solution with replaceable covers and bezel
- Natural light source appearance due to reflector-LED technology
- Significant energy saving
- No lamp replacement needed due to long lifetime of the product



Philips building, Eindhoven, the Netherlands



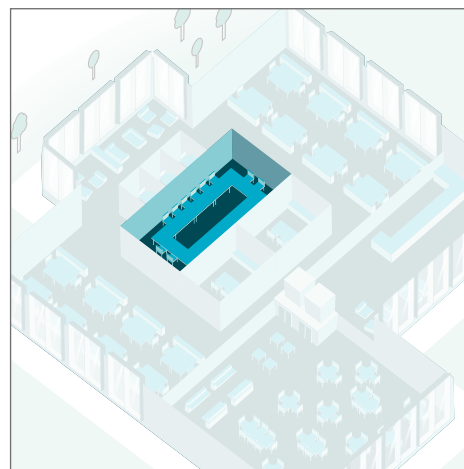
Meeting room

Lighting has a profound effect on the way people feel. Tailor the lighting to suit the agenda and your meeting rooms become far more effective spaces. Light can enhance well-being, create excitement or provide an air of concentration. Our innovative solutions take lighting to new levels of sophistication, with clever features that bring out the best in your meeting rooms and the people who use them.

Create attention

No two meetings are ever the same, so it's vital that the lighting in your client's meeting rooms are designed for maximum flexibility and visual comfort. A high output with no glare works best for collaborative sessions that need to stay productive. Informal presentations are best delivered in a softer ambience that relaxes and calms. Our lighting solutions are designed to bring

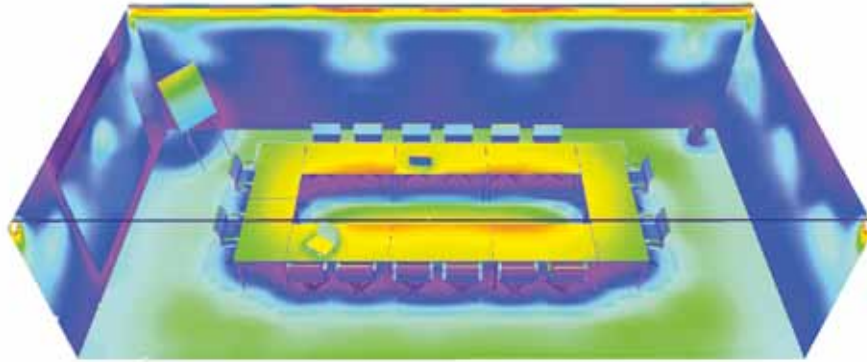
every meeting to life. Our next generation LEDs can create a crisp, sparkling and warm white light that will energise the whole room. And we also have brilliant ways to use colour changing effects for accents and alcoves, so you can tune the lighting to suit the mood. By using our Philips Dynalite controls meeting room solution, all of this can be steered with a very simple touchscreen.



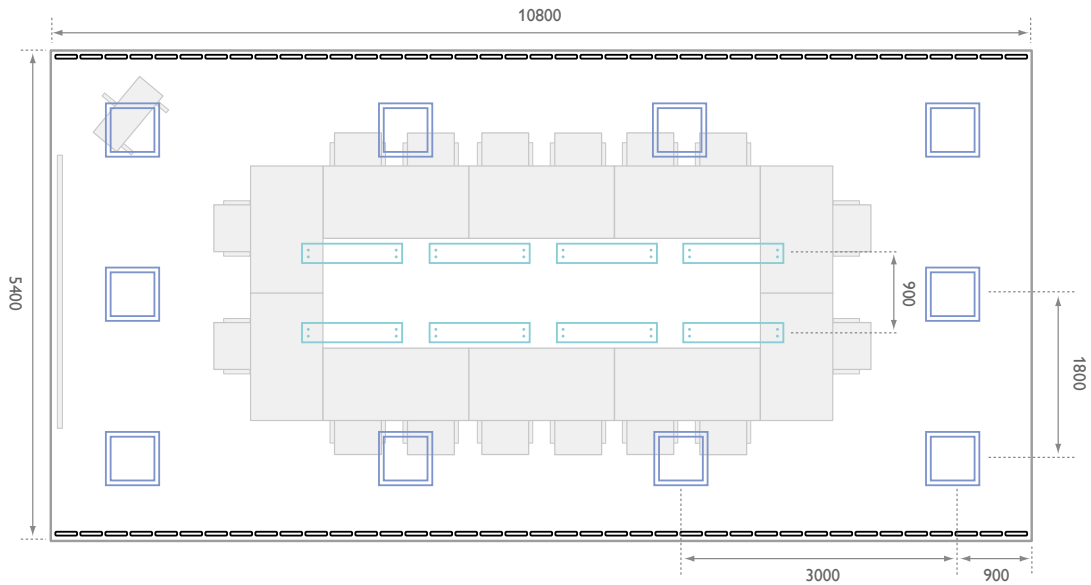
Meeting room Standard

Rectangular pendant luminaires above the meeting table with recessed square luminaires providing the general lighting. White cove lighting is used on the long walls to provide good background lighting.

Isolux diagram



Plan view



Luminaires used

All dimensions in millimetres



eWCove MX PowerCore® (white)

Along ceiling

- A maintenance free, cost effective, dimmable, high-luminance cove system
- Highly versatile, end to end locking connectors for continuous streams of light to achieve curves on more complex geometries
- Capable of 180° rotation
- Can be installed into mounting clips or continuous profile track



SmartForm LED Recessed

Recessed, general lighting

- Energy saving
- Inspiring light effects
- Highly versatile family
- Office-norm compliant



Arano LED

Suspended above table

- Offers comparable light output to TL-5 luminaires with 28W lamps
- Available in 3000K and 4000K
- Range includes surface and suspended versions

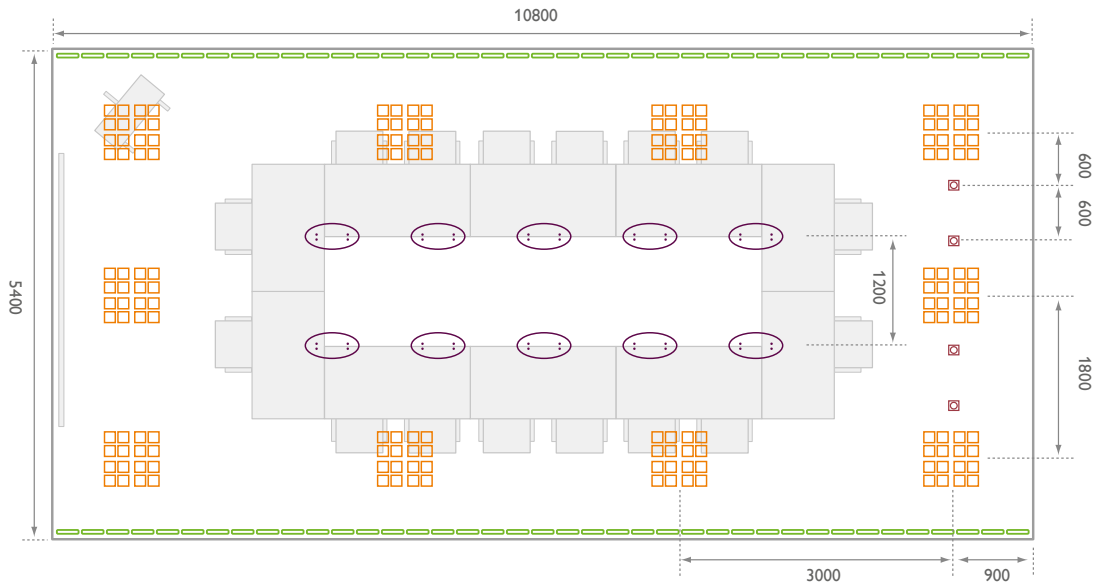
Meeting room Advanced

Advanced uses innovative recessed and pendant luminaires with additional spots to create additional highlights. Instead of white, colored cove lighting has been added to provide more flexibility in scene setting.

Isolux diagram



Plan view



Luminaires used

All dimensions in millimetres



iColorCove MX PowerCore® (colour)

Along ceiling

- Dynamic RGB lighting effects suited for alcove, accent areas and tight spaces
- End to end mounting for continuous mounting streams of light to achieve curves or more complex geometries
- High intensity luminaire
- Capable of 180° rotation in 10° increments



PowerBalance

Recessed, general lighting

- Offers substantial energy saving compared to TL-5 luminaires of a similar output
- Most energy efficient office-norm compliant LED luminaire
- Allowing for significant cost savings
- Office norm compliant
- Additional energy saving up to 50% in combination with controls



TurnRound Spot

Aimed at wall

- Substantial energy saving compared to standard halogens
- Compact design for improved flexibility
- Fixed and adjustable versions
- Excellent alternative to 50W low voltage halogen, giving comparable light quality
- Long life for low maintenance



LumiStone

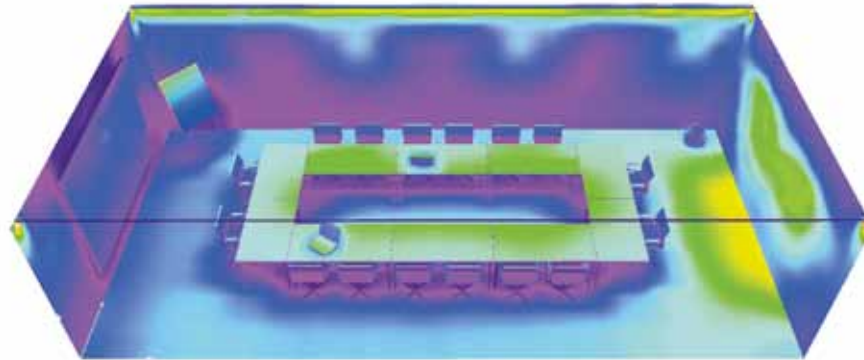
Suspended above table

- Most energy efficient office-norm compliant suspended LED luminaire
- Inspiring design with elliptical modules

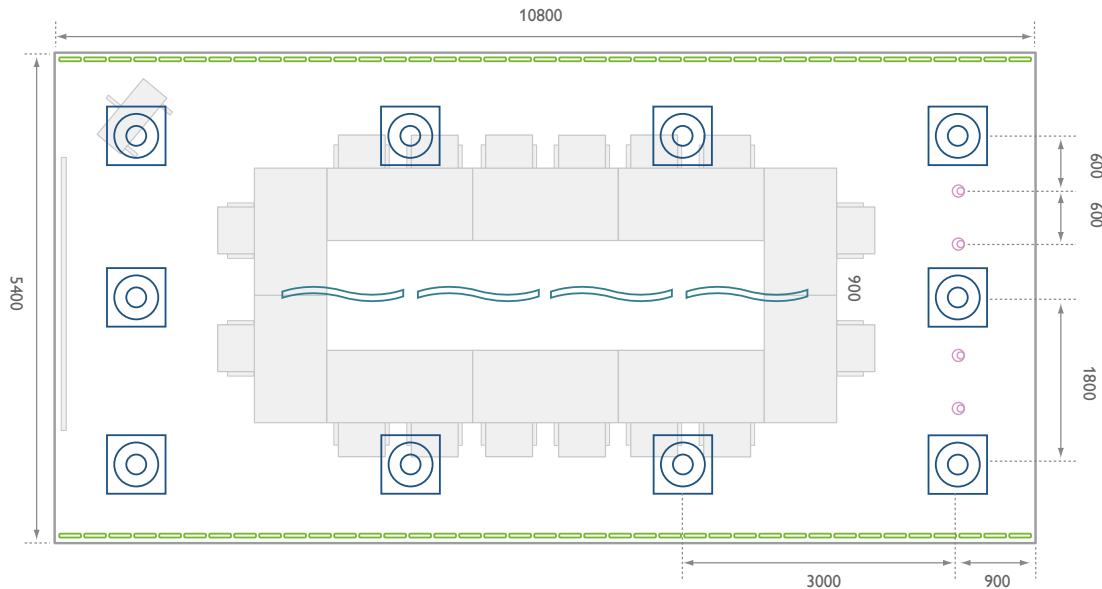
Meeting room Premium

Premium is based on the Advanced design but with high end suspended luminaires to further enhance the look and feel of the space.

Isolux diagram



Plan view



Luminaires used

All dimensions in millimetres



iColorCove MX PowerCore® (colour)
Along ceiling

- Dynamic RGB lighting effects suited for alcove, accent areas and tight spaces
- End to end mounting for continuous mounting streams of light to achieve curves or more complex geometries
- High intensity luminaire
- Capable of 180° rotation in 10° increments



DayZone Square
Recessed, general lighting

- Indoor recessed LED luminaire for general illumination
- Helps meet sustainability criteria
- Full dimming capabilities
- Inspiring design & light effect
- High visual comfort
- Energy efficient
- Additional energy saving up to 50% in combination with controls



StyliD Spot
Aimed at wall

- Full flexible solution with replaceable covers and bezel
- Natural light source appearance due to reflector-LED technology
- Significant energy saving
- No lamp replacement needed due to long lifetime of the product



DayWave
Suspended above table

- The essence of total LED form freedom
- A beautiful sleek design suitable for continuous suspended mounting
- Delivering uniform lighting for high visual comfort
- Available in dynamic colour temperature changing version
- Optional curve up and curve down design





Open plan office

Open plan offices are dynamic spaces where people need to carry out a wide variety of different tasks. Lighting can create a comfortable ambience by combining functional lighting with inspiring light effects. Add individual controls and the light can be personalised at each desk. So whatever your staff are working on, business is a pleasure.

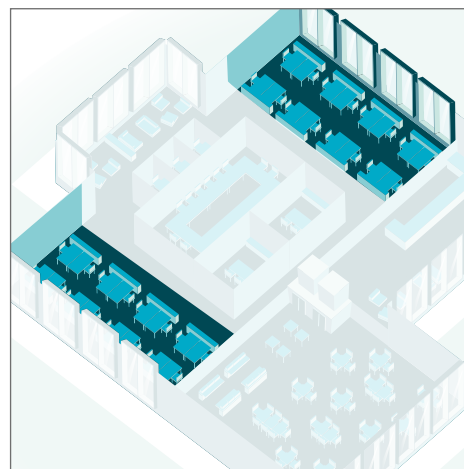
Feel better, work better

As our ways of working become more intuitive, so should our office space. Good lighting that's tailored to individual tasks helps staff to work more effectively during the day. Our solutions shine with impressive visual comfort, glare control and colour consistency, to create the most comfortable office ambience. And when people feel better, they work better too. Solutions like DayZone combine an

aesthetically striking appearance with a quality of light that respects all office norms. Add intuitive controls like OccuSwitch DALI for occupancy detection or daylight dimming, to give flexibility whilst maintaining comfort for any office space. All at the same time as saving up to 75% in energy so your client can feel better about their impact on the planet.



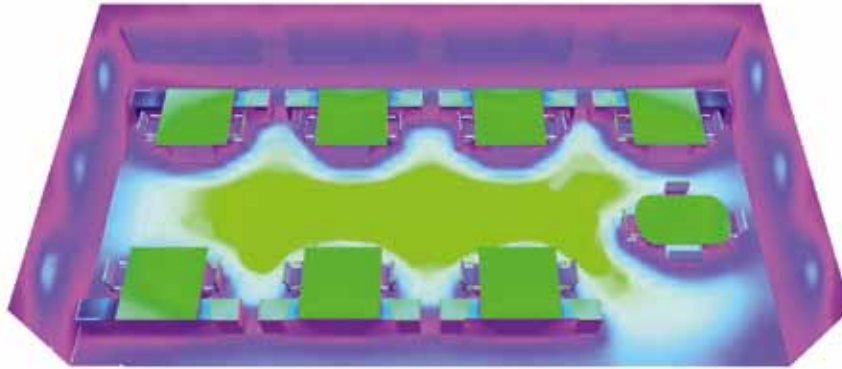
John Deere, Mannheim and Bruchsal, Germany



Open plan office Standard

Standard office design using efficient office compliant square recessed LED luminaires.

Isolux diagram



Plan view



Luminaires used

All dimensions in millimetres



SmartForm LED Recessed

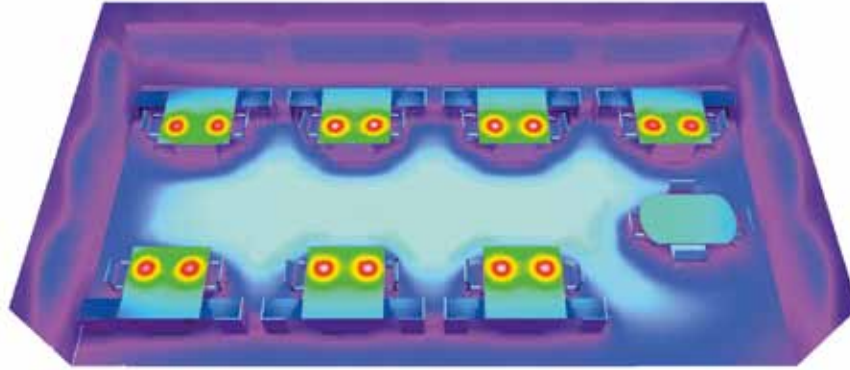
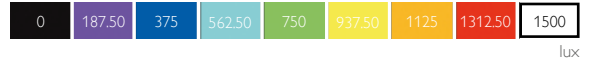
Recessed, general lighting

- Energy saving
- Inspiring light effects
- Highly versatile family
- Office-norm compliant

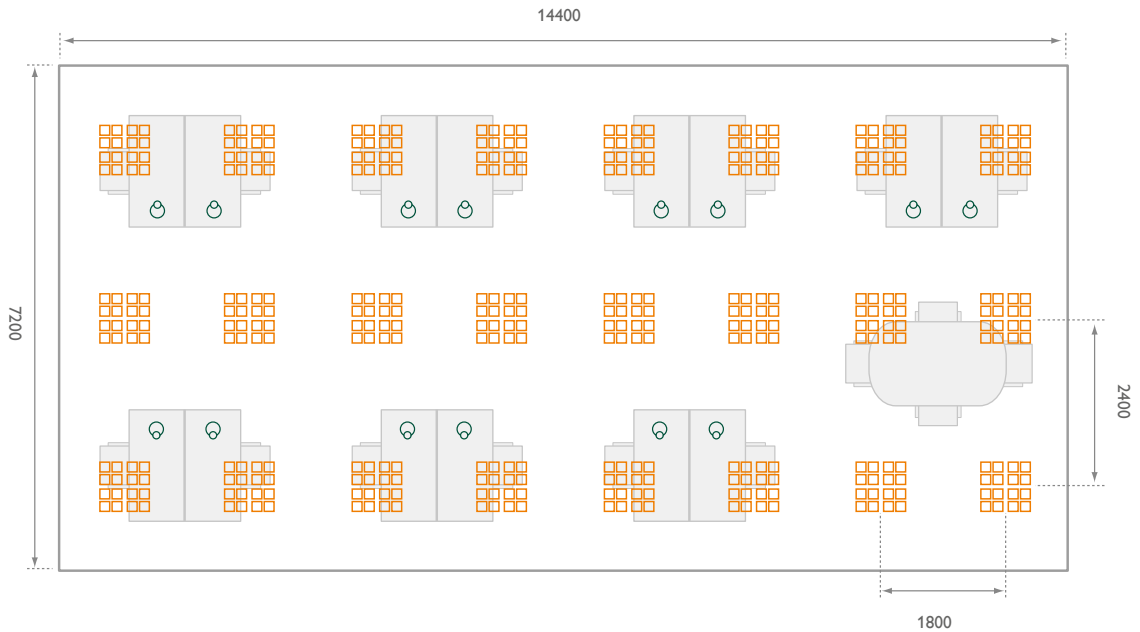
Open plan office **Advanced**

The Advanced layout recommends a highly efficient LED recessed luminaire for general illumination with additional desk lighting for added flexibility.

Isolux diagram



Plan view



Luminaires used

All dimensions in millimetres



PowerBalance

Recessed, general lighting

- Offers substantial energy saving compared to TL-5 luminaires of a similar output
- Most energy efficient office-norm compliant LED luminaire
- Allowing for significant cost savings
- Office norm compliant
- Additional energy saving up to 50% in combination with controls



TaskFlex

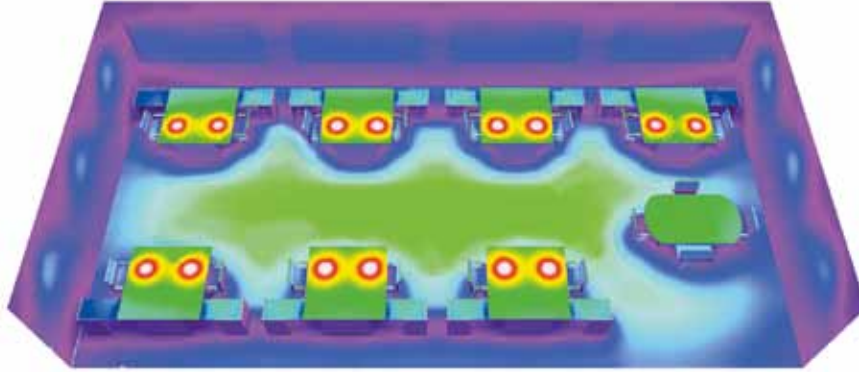
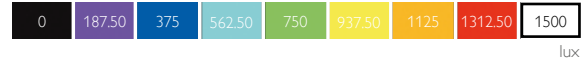
Desklight

- Adjustable height up to 80 cm
- Wide range of movement – two spring loaded arms allow for easy positioning of the head above the task area enabling the base to be placed far out of the way without instability
- Plug-and-play – movable design
- Long lifetime up to 50,000 hours
- Power consumption 8W
- Diffuse light is cut off at a minimum angle for glare free, comfortable light

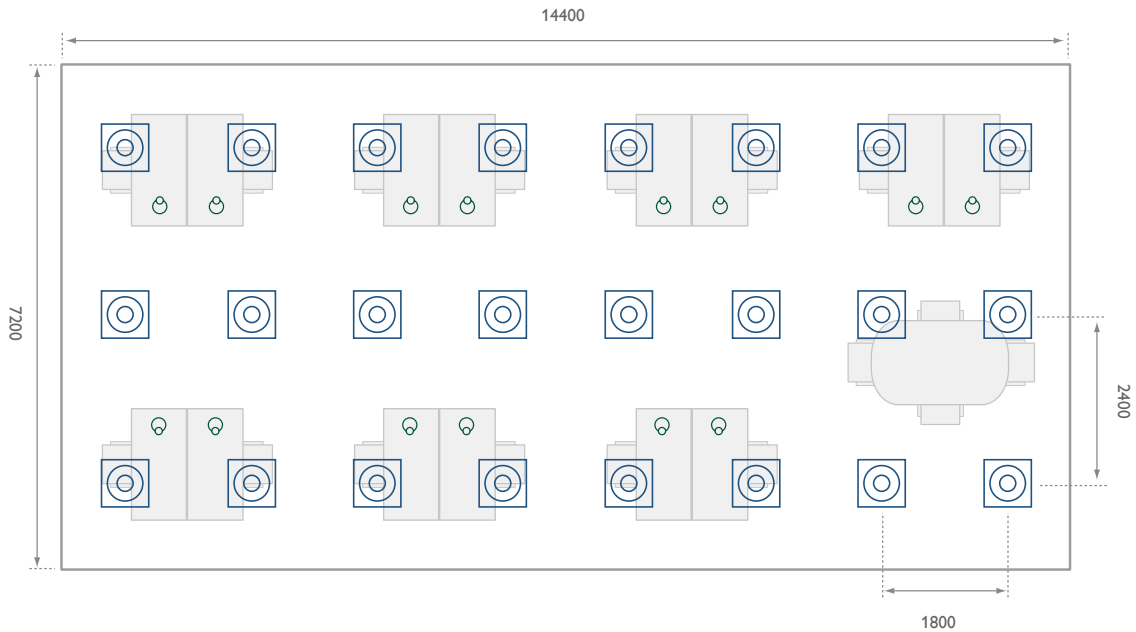
Open plan office Premium

Our Premium solution uses the same layout and design as in Advanced but enhancing the look and feel of the room by using inspiring high end luminaires.

Isolux diagram



Plan view



Luminaires used

All dimensions in millimetres



DayZone Square

Recessed, general lighting

- Indoor recessed LED luminaire for general illumination
- Helps meet sustainability criteria
- Full dimming capabilities
- Inspiring design & light effect
- High visual comfort
- Energy efficient
- Additional energy saving up to 50% in combination with controls



TaskFlex

Desklight

- Adjustable height up to 80 cm
- Wide range of movement – two spring loaded arms allow for easy positioning of the head above the task area enabling the base to be placed far out of the way without instability
- Plug-and-play – movable design
- Long lifetime up to 50,000 hours
- Power consumption 8W
- Diffuse light is cut off at a minimum angle for glare free, comfortable light





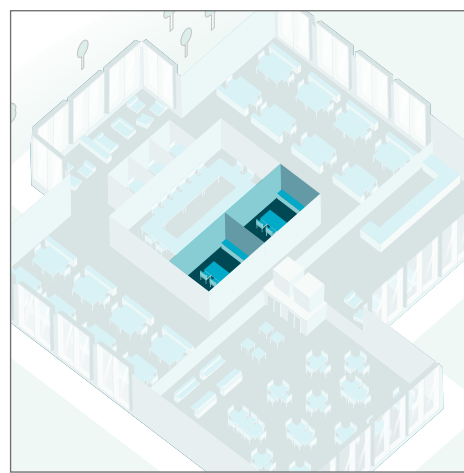
Cell office

Cell offices and internal rooms provide welcome peace and quiet from busy office life. But sometimes they have only limited natural light and leave people feeling out of touch with the world outside the office walls. The right lighting dynamics can help to produce a comfortable working ambience and create a sense of well-being.

Attractive savings

Private offices and internal spaces require lighting more often, to create the same bright ambience as rooms that are flooded with natural light. But that doesn't mean the solution has to look harsh or artificial. Some of the most inspirational luminaire designs provide light with the highest levels of visual comfort. They also offer the possibility of dimming for even more calming ambiances.

And it needn't cost companies the earth, because more lighting doesn't have to mean more wasted energy. With clever controls to switch lights off when no one's around, you can still save on energy bills without cutting corners on office ambience. Suddenly lighting internal cell offices looks far more attractive.



Cas Sombroek, Volendam, the Netherlands

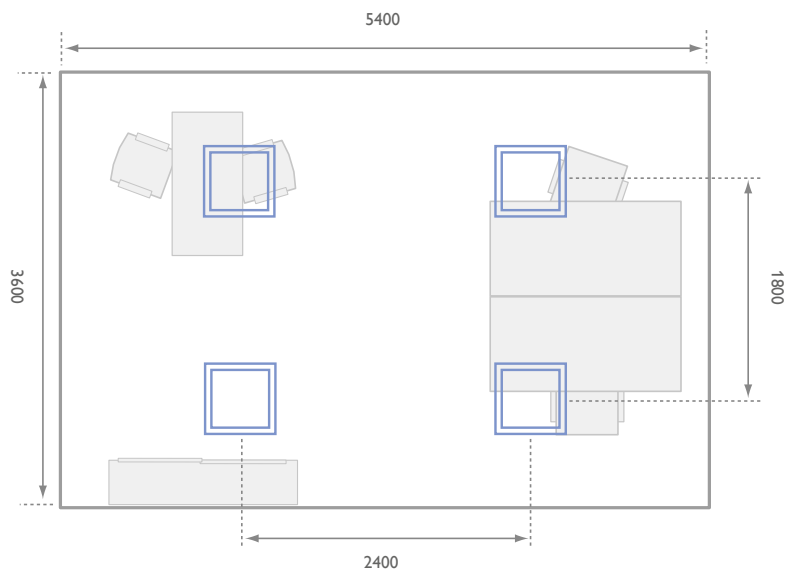
Cell office Standard

The Standard design uses four square recessed luminaires to provide functional lighting.

Isolux diagram

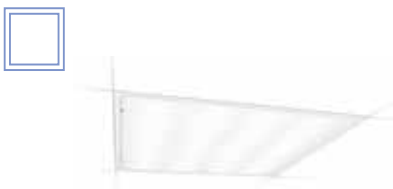


Plan view



Luminaires used

All dimensions in millimetres



SmartForm LED Recessed

Recessed, general lighting

- Energy saving
- Inspiring light effects
- Highly versatile family
- Office-norm compliant

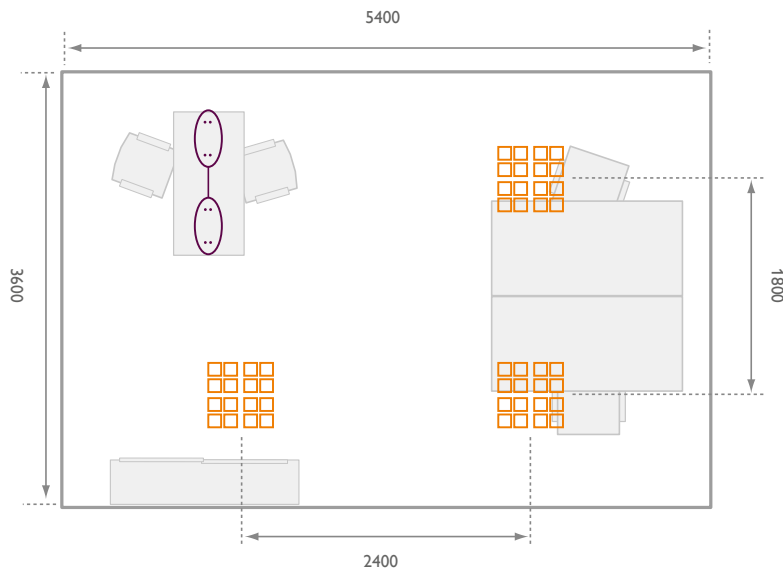
Cell office Advanced

Advanced has the same layout as the Standard design, but with more innovative luminaires and a dedicated suspended luminaire for the meeting table.

Isolux diagram



Plan view



Luminaires used

All dimensions in millimetres



PowerBalance

Recessed, general lighting

- Offers substantial energy saving compared to TL-5 luminaires of a similar output
- Most energy efficient office-norm compliant LED luminaire
- Allowing for significant cost savings
- Office norm compliant
- Additional energy saving up to 50% in combination with controls



LumiStone

Suspended above table

- Most energy efficient office-norm compliant suspended LED luminaire
- Inspiring design with elliptical modules

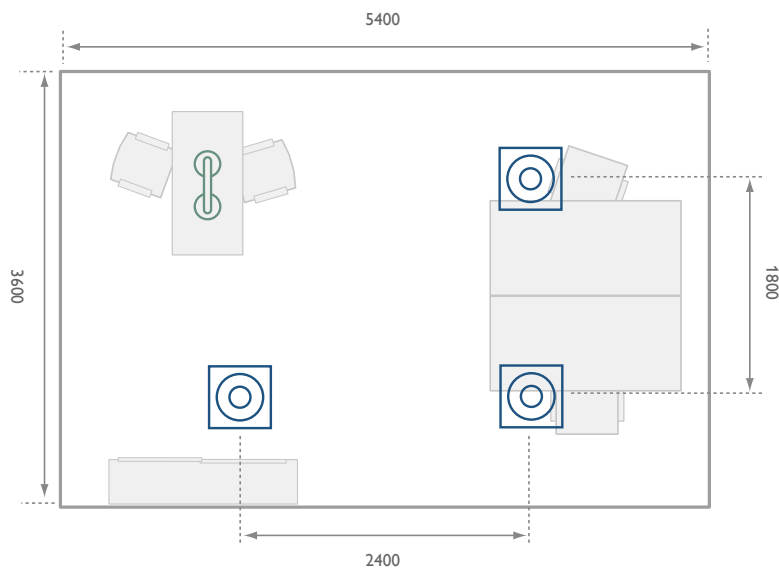
Cell office Premium

With Premium the general layout of the design remains the same, however the look and feel is enhanced by using high end and inspiring luminaires.

Isolux diagram



Plan view



Luminaires used

All dimensions in millimetres



DayZone Square

Recessed, general lighting

- Indoor recessed LED luminaire for general illumination
- Helps meet sustainability criteria
- Full dimming capabilities
- Inspiring design & light effect
- High visual comfort
- Energy efficient
- Additional energy saving up to 50% in combination with controls



DaySign Pendant Twin

Suspended above table

- Super thin
- Non glaring light emitting surface
- High Light Output – (50W halogen)
- For general and accent lighting





Restaurant

Creating the right ambience is crucial in in-house restaurants where people come to unwind, socialise, take a break from their working day or simply go to enjoy the experience.

Table theatre

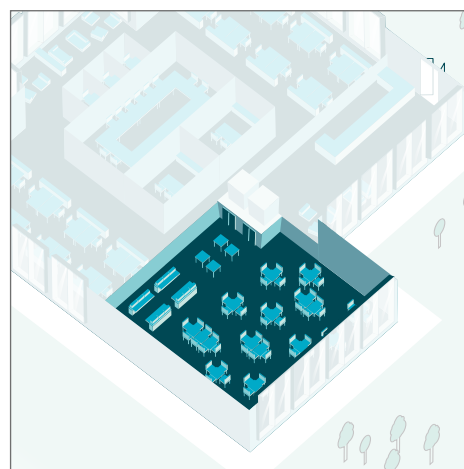
Our lighting solutions will allow you to create an ideal in-house restaurant atmosphere at any time of the day. One that is functional, as well as stimulating and refreshing during the day, but also flexible enough to be able to change to something that's more intimate and laid-back at night – customer events for example. By clever use of dimming and coloured lighting, anything is possible. Whether day

or night, choosing the right lighting solution will determine whether employees or customers are genuinely comfortable and relaxed in your restaurant environment.

Effective lighting will help you create an inviting and hospitable atmosphere suitable for any use – a truly multi functional space, designed to delight corporate customers and banking staff alike.



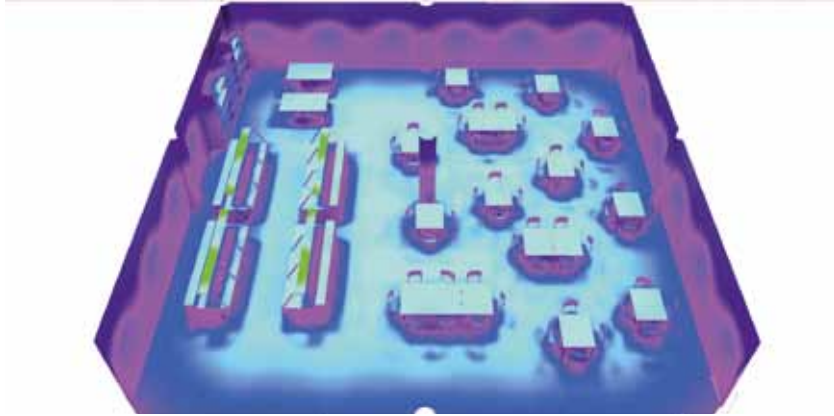
Menzis, Groningen, the Netherlands



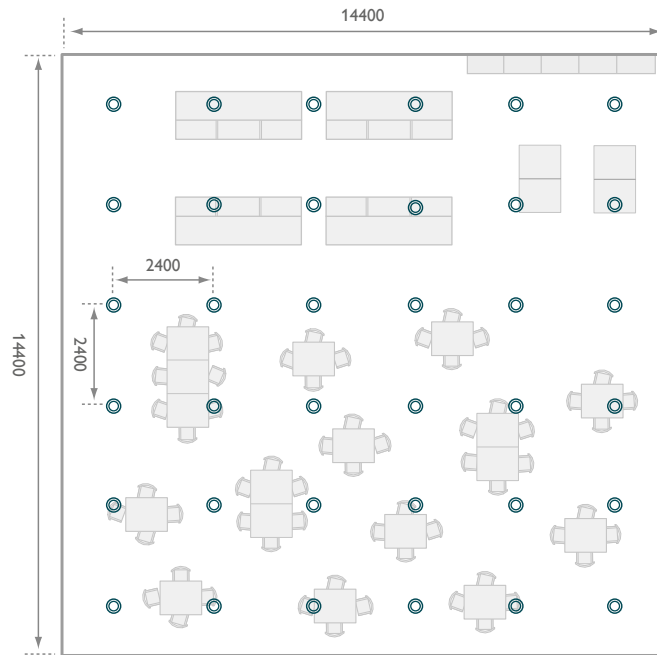
Restaurant Standard

Our Standard general lighting solution is provided by LED downlights.

Isolux diagram



Plan view



Luminaires used

All dimensions in millimetres



LuxSpace

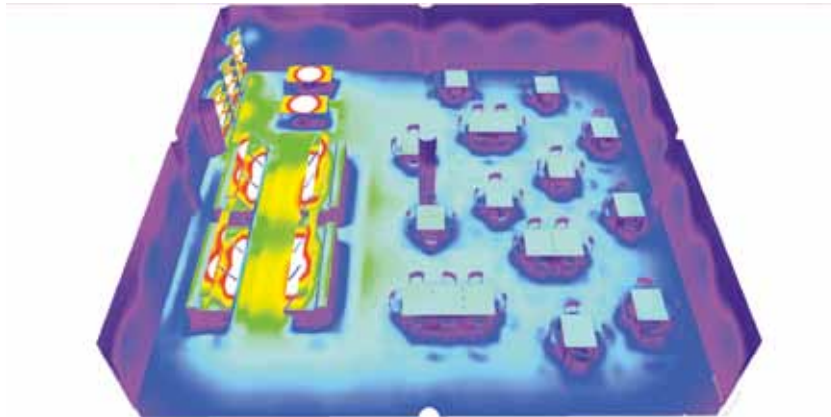
Recessed, general lighting

- Replacement for conventional downlight applications using CFL or halogen equivalents
- Delivers consistent light output, stable colour performance and high colour rendering.
- Easy to install with a long lifetime
- Full dimming capabilities

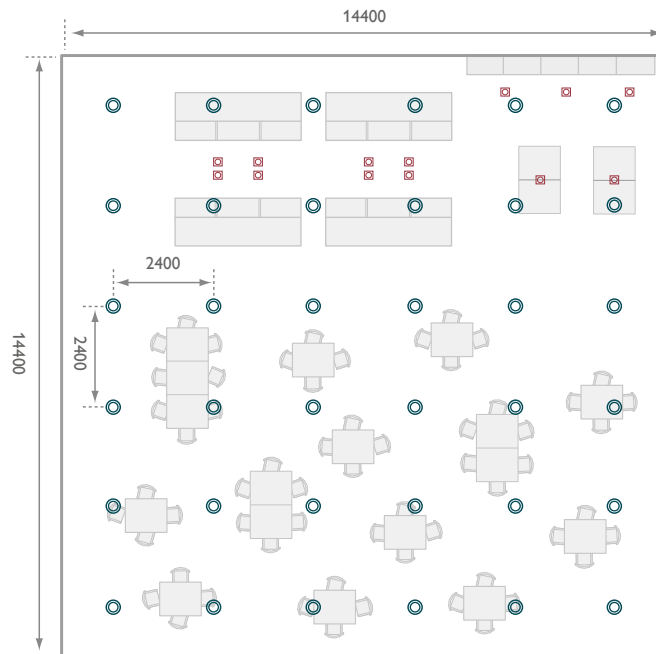
Restaurant Advanced

Advanced general lighting is similar to the Standard design but with additional spots to put more focus on the shelves and food.

Isolux diagram



Plan view



Luminaires used

All dimensions in millimetres



LuxSpace

Recessed, general lighting

- Replacement for conventional downlight applications using CFL or halogen equivalents
- Delivers consistent light output, stable colour performance and high colour rendering.
- Easy to install with a long lifetime
- Full dimming capabilities



TurnRound Spot

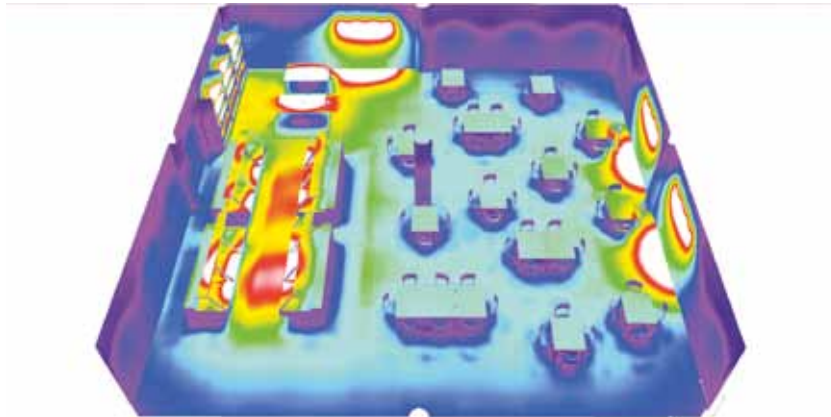
Aimed at shelves

- Substantial energy saving compared to standard halogens
- Compact design for improved flexibility
- Fixed and adjustable versions
- Excellent alternative to 50W low voltage halogen, giving comparable light quality
- Long life for low maintenance

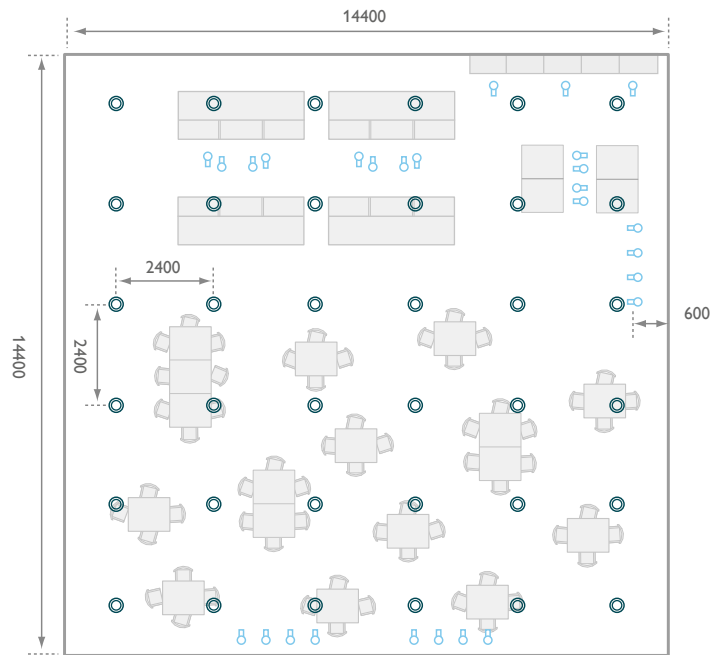
Restaurant Premium

General lighting is similar to the other designs, however using high end spots on a track to increase flexibility of the installation. Additional spots have been added throughout the room to create accents and enhance the atmosphere.

Isolux diagram



Plan view



Luminaires used

All dimensions in millimetres



LuxSpace

Recessed, general lighting

- Replacement for conventional downlight applications using CFL or halogen equivalents
- Delivers consistent light output, stable colour performance and high colour rendering.
- Easy to install with a long lifetime
- Full dimming capabilities



StyliD on Track

Aimed at shelves and for example posters/banners

- Full flexible solution with replaceable covers and bezel
- Natural light source appearance due to reflector-LED technology
- Significant energy saving
- No lamp replacement needed due to long lifetime of the product





Outdoor

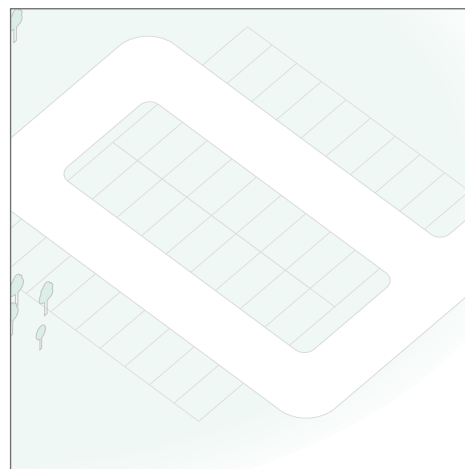
Lighting parking areas effectively is essential to make them feel safe and welcoming. But parking zones that require lighting 24 hours a day can waste precious energy. Making sustainable, energy efficient choices will have a big impact on your client's energy bills and the least impact on the planet.

Bright ideas for parking

Welcome visitors and employees to your bank's parking facilities by creating bright spaces with good visibility and no pockets of shade. Our solutions can help you save energy and enhance your green credentials. And with serviceable light engines you can upgrade to future LEDs without having to replace the entire luminaire. Our waterproof Pacific LED provides high quality white light with excellent beam control to minimise glare, an important factor in applications like

parking garages. The robust design is quick and easy to install and can be mounted individually or in line to aid guidance.

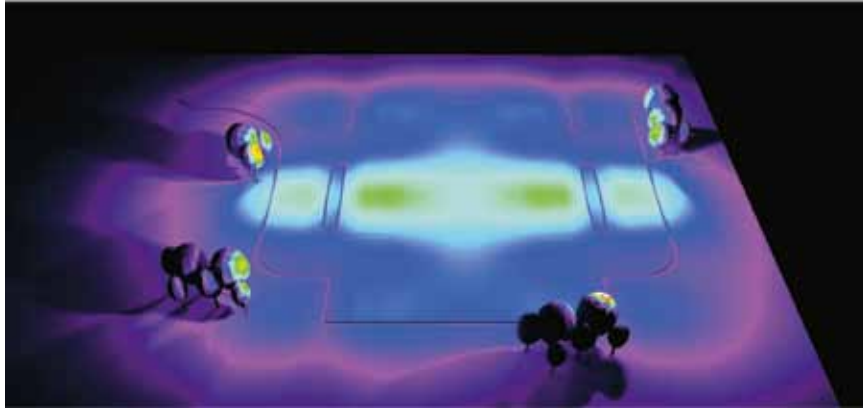
Lighting can be programmed to switch on and off at dusk and dawn. By using sensors, your system can adjust light levels to meet variable light conditions and by employing motion sensors, it can sense people approaching and brighten lighting instantly in response, before returning to a 'dimmed' setting – especially useful in off-peak hours.



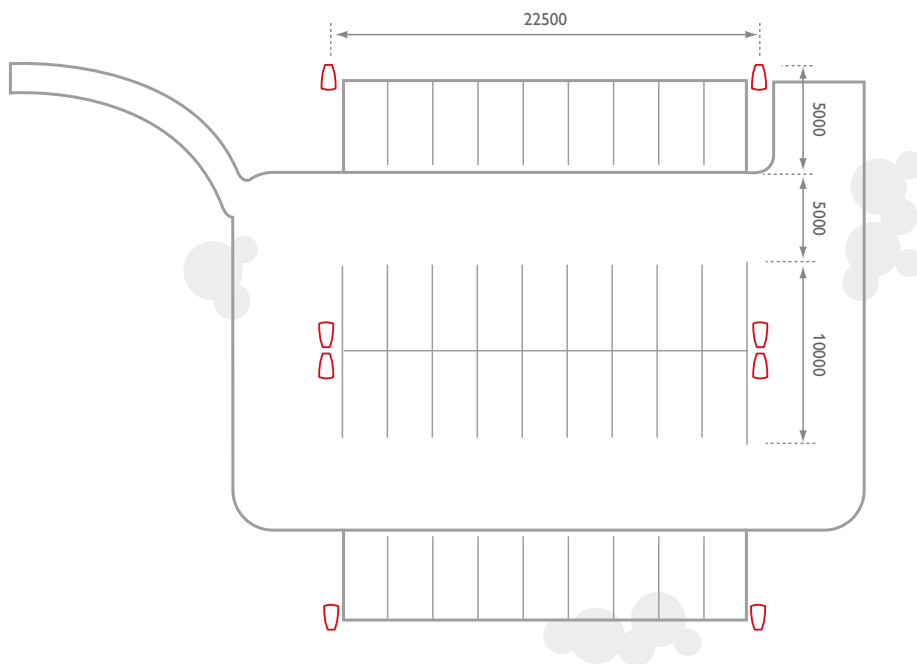
Outdoor Standard

Our Standard setup uses Fortimo based luminaires on an 8 metre mast.

Isolux diagram



Plan view



Luminaires used

All dimensions in millimetres



Koffer² Fortimo

In and around the car park

- Stylish with minimalist design
- Choice of 3000K and 4000K colour temperatures
- Housing in high pressure die cast aluminium coating
- Energy efficiency and very low maintenance
- Easy to upgrade LED modules

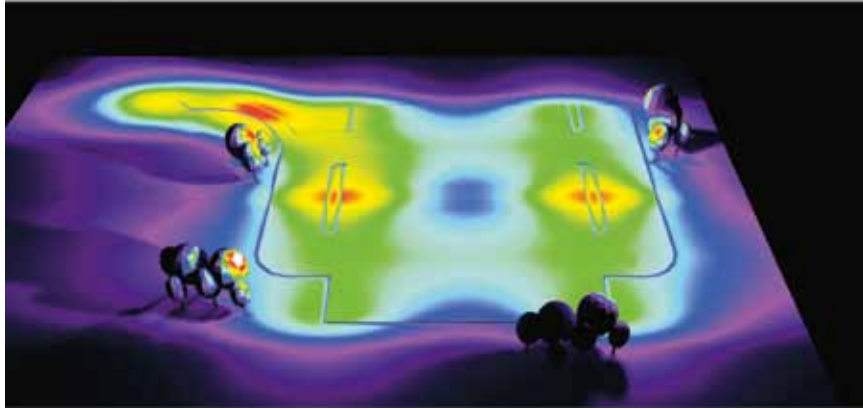
Outdoor Advanced

The same setup as Standard design but with advanced luminaires and additional luminaires to light pathways, mounted on 6 metre masts.

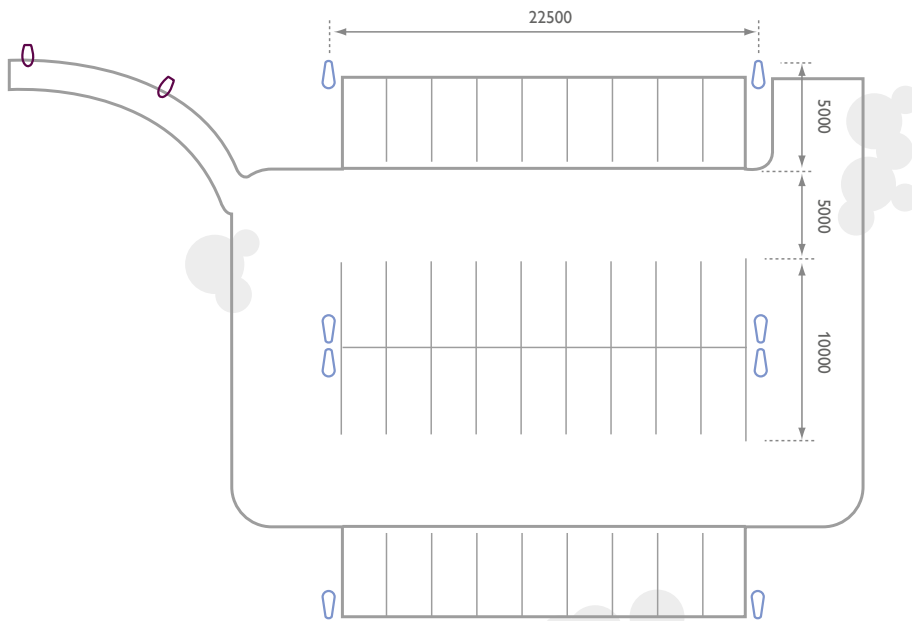
Isolux diagram



lux



Plan view



Luminaires used

All dimensions in millimetres



Mini Iridium LED

Along foot path

- Low cost of ownership
- Superior optics
- Dimming and telemanagement capability
- Ease of installation and maintenances



Iridium² LED (medium)

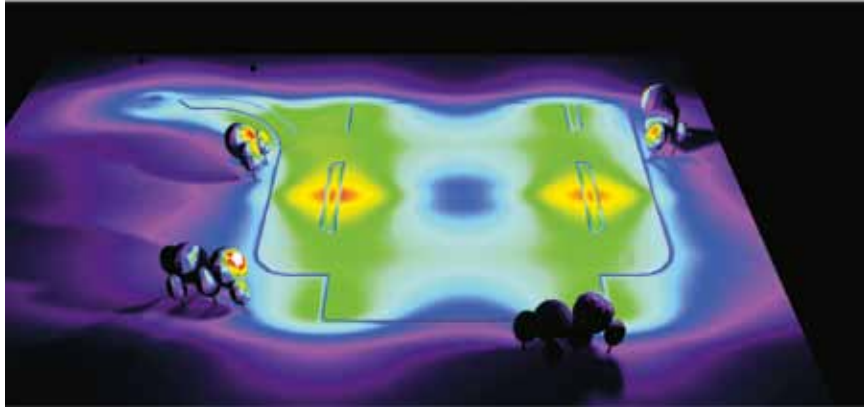
In and around the car park

- Aesthetical design
- Easy maintenance with simple tools
- Easy to upgrade with LED technology improvements
- LEDGINE LED technology
- Electronic drivers

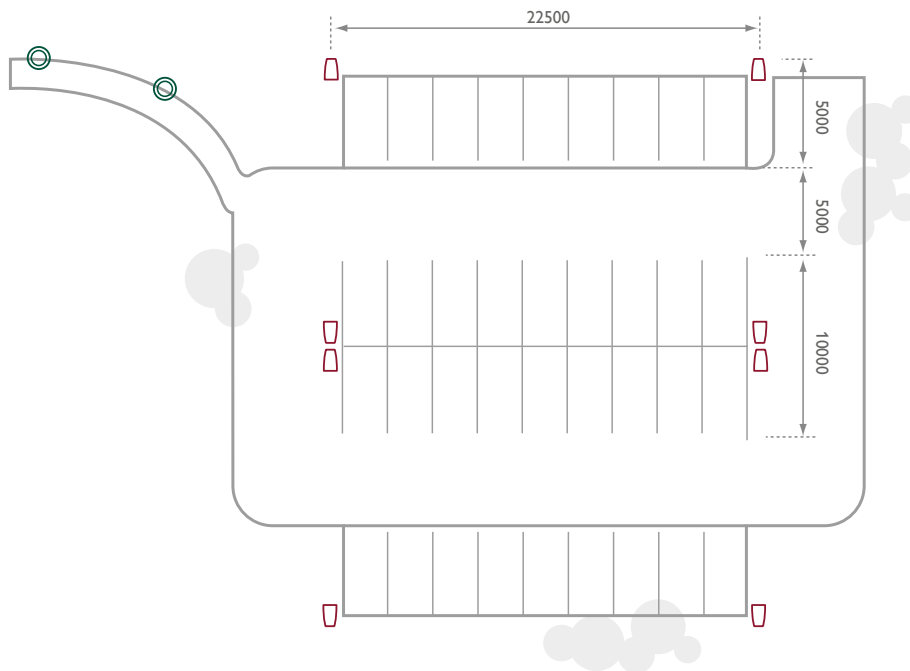
Outdoor Premium

Premium is similar in setup to the Advanced design but using high end luminaires and attractive post top luminaires mounted on 5 metre masts.

Isolux diagram



Plan view



Luminaires used

All dimensions in millimetres



CitySpirit Cone

Along foot path

- Features a geometrical design and transparent day time appearance
- Blends clean, simple design and high importance
- Direct replacement to HID solutions without compromising space, mounting height or light quality



SpeedStar (medium size)

In and around the car park

- Super thin
- Non glaring light emitting surface
- High Light Output – (50W halogen)
- For general and accent lighting



Controls

Intelligent systems – helping LED lighting work smarter

Philips is synonymous with the creation of sophisticated, reliable and energy-efficient lighting control solutions. We offer a wide portfolio of products, each one aligned to work with our innovative LED solutions – giving you the ability to create inviting, highly functional and impressive office environments.

Our approach includes a focus on energy-efficient methods of creating and supporting aesthetic lighting schemes both inside and out. Harnessing the energy-saving potential of lighting control systems and returning the cost savings to your client is our strength. By implementing a range of energy management strategies, such as presence sensing, zoning, daylight harvesting, dimming and time-based control, users can optimise energy use, while maintaining comfort levels and maximising cost savings.

Already known for their long life and energy savings, harnessing the power of intelligent, programmable control systems helps make efficient LED lighting technology even better. Here we highlight three product options, starting from standard simple 'plug and play' solutions through to premium fully scalable, integrated networked solutions for both indoor and outdoor use.

The goal with controls – to have the right amount of light on only when and where it's needed, to reduce carbon emissions and energy, create ambience and increase your clients' employee comfort. Savings of up to 30% can be achieved by simply turning the lights off in unoccupied areas.

Standard – OccuSwitch

Energy Reduction through Stand Alone Presence and Daylight Control

Our starting point – a simple to install and use device, designed to work with any luminaire type.

OccuSwitch DALI optimises energy savings by using intelligent daylight controls. It is a combined sensor and controller, which will dim and switch the lights in a room or area upon occupancy and according to the available daylight. With options for local override, parallel operation and network links to building management systems. It is easy to install, requires limited, if any commissioning.

OccuSwitch Wireless is the perfect solution. A wireless sensor can be placed anywhere required, easily and quickly. When the system detects appropriate levels of light, the luminaires will be dimmed or even switched off, saving up to 55% energy. It dims lights in vacant areas instead of switching them off, creating a comfortable environment that always feels safe to work in.

All OccuSwitch family members have automatic movement detectors that switch lights on and off for you – intelligent solutions that detect the slightest movement and are quick and easy to install, so your client can start saving, from the moment they are installed.





Advanced – ToBeTouched

Stand Alone Scene Setting

The ToBeTouched range consists of intuitive user interfaces designed to promote user interactivity with the system and luminaires, allowing users to fit the mood to the occasion. There is a ToBeTouched interface for almost every luminaire or controller. This product answers the need for stand-alone with no commissioning. The ToBeTouched range currently comprises four models. These range from a simple on/off switch and a version with dimming to a cool/warm-white controller and a full-colour model.

Features and benefits include the choice of an infinite variety of colours with one touch, thanks to the user-friendly colour ring, exciting design, ease of installation and customisation, effectively 'plug and play', a glowing light ring, providing feedback with light, DMX-DALI and RC5-IR compliance, four different models and presence detection compatibility with the ToBeTouched DALI model.

Changing the colour and intensity of lighting is simple, via the iconic style and ease of interaction of the colour ring ToBeTouched system. System options offer the ability to dial in infinite colour combinations through the RGB colour wheel, or a selection of white light settings.



Premium – Dyalite

Enhanced Control

Dyalite lighting control systems allow building owners to create inviting, highly functional office environments – ones that stimulate productivity and optimise energy use, while permitting users to tailor work areas to specific tasks and accommodate future layout and occupancy changes. By implementing intelligent systems that ensure lighting is only activated when and where it is required, building owners can optimise environmental performance and minimise operating and maintenance costs.

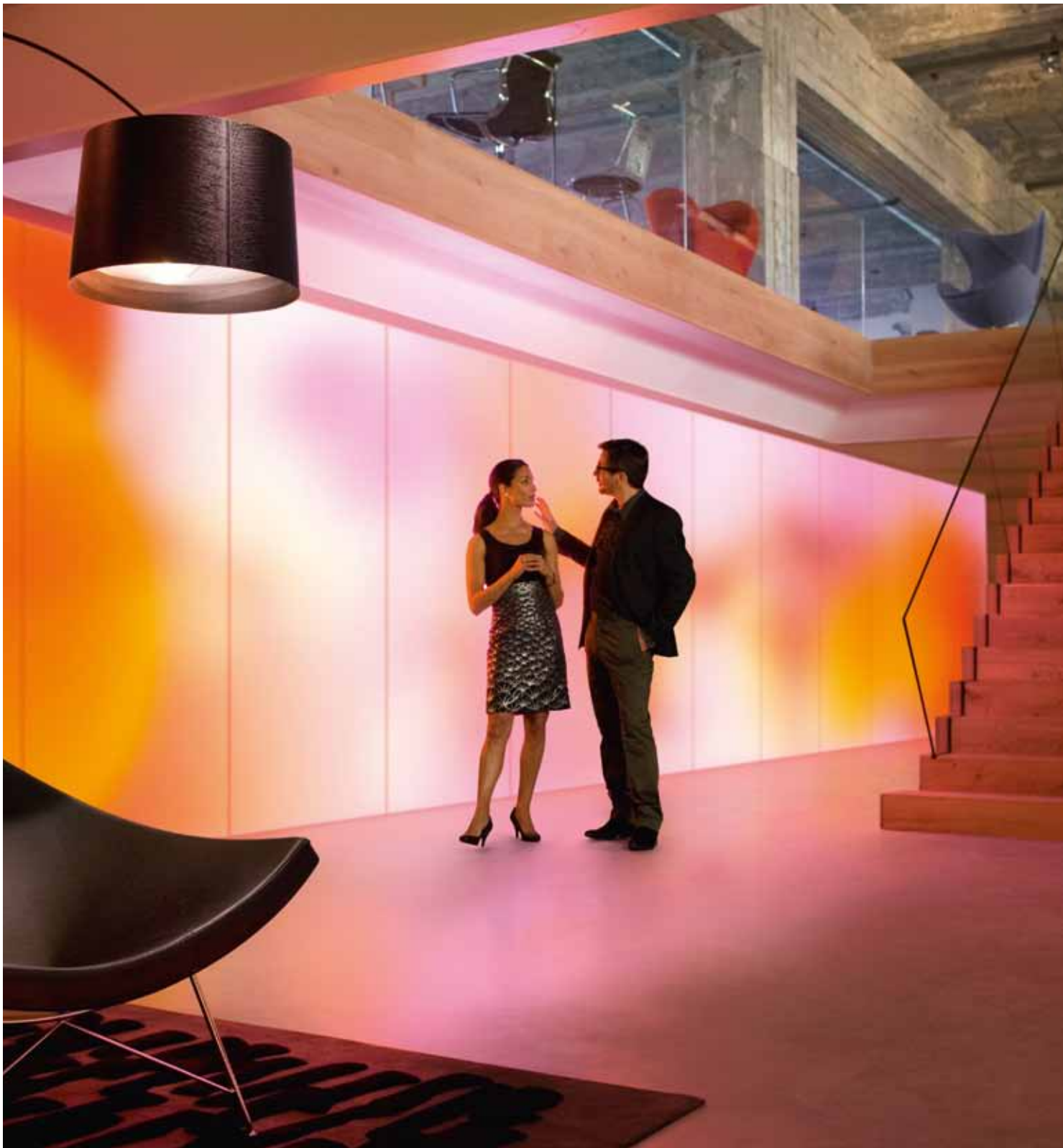
Advanced scene setting and energy reduction is all possible through our intelligent Dyalite control system. Pre-programme multi media lighting scenes for meeting rooms, create ambience to stimulate debate in meeting rooms or relax in break out areas. Dyalite is also the ideal solution to help enhance your clients brand image in reception areas.

By integrating our systems with building management systems (BMS) and incorporating third-party control elements, building stakeholders can further enhance energy savings and earn credit points across differing regional and country energy rating systems. To accommodate 'building churn' – where tenancies change, staff numbers fluctuate and office activities vary – Philips Dyalite adopts a scalable approach. By ensuring lighting and energy-management systems can accommodate this re-configuration of the office space, building owners can avoid wasteful and intrusive lighting refurbishments and extend the lifetime of their system.



Luminous Textile

Bring spaces alive



Luminous Textile is an easy-fit system that integrates LED modules within acoustic textile panels to show dynamic content and soften sound. Multiple panels can be arranged in numerous ways to bring each space alive from one huge mood wall to individual panels scattered across a wall.



Luminous Textile

- Freedom of design
- Maximum 18 modules, standard or customised
- Pixel pitch: 60 mm
- Panel Thickness: 130 mm (120 mm for panel, 10 mm for mounting)
- Min. & max. size per standard panel: Min. size 1.20m x 0.72m (increasing with steps of 1.20m x 0.36m) to max. size 1.20m x 6.48m
- Min. & max. weight per panel: Min. weight 15kg for smallest panel to max. weight 67kg for biggest panel
- Power usage: Min. usage 60W for smallest panel to max. usage 450W for biggest panel
- Front fabric: Kvadrat textile (7 textures, up to 8 colours per texture)
- Number of mounting points: Mountable with bolts and magnets for precise mounting per panel. Number of mounting points depend on panel size
- Number of panels connected: Unlimited number of panels. Master > slaves, connected via router
- IP rating: Indoor only (IP20)
- Operating temperature range: 5-35°C / 41-95 °F
- Operating max relative humidity range: 95% (non condensing)
- Input voltage: 100-240V AC 50/60 Hz
- Acoustic properties: Depending on textile, from ISO 11654 Category D and better
- Light output: Depending on choice of front fabric. Example "Toto 102" (white colour) is max. 120 cd / m²
- Content included: Access to standard content included, premium content subscriptions & customised content possible
- Content management: Content management software included in price
- System integration: Yes, via KiNet

Top tips for specifying LED's

Standardising the performance criteria for LED luminaires

The rise of LED lighting is driving a significant transformation of our lighting industry – offering flexibility, creativity, programmability and energy efficiency.

But standards vary tremendously. In recent years the lighting market has been flooded by a vast number of new and unproven entrants. Some making claims about their products' performance that don't stand up to scrutiny, while established manufacturers stand by their track records. Who to believe? As things stand, it can be difficult to know who to trust to deliver on their promises, which potentially undermines the whole LED lighting industry.

A CELMA guiding paper published in November 2011 aims to help bring clarity by introducing a universal set of quality criteria described in two IEC/PAS documents. As a user of LED luminaires it is

important to apply the same set of standardised, comparable quality criteria when evaluating manufacturers' claims. LED luminaire specifications should always be measured against these.

There are three elements that can be standardised: technical definitions, measurement methods and limiting values. The IEC/PAS performance requirement documents describe the definition of quality criteria and the way to measure them. This means you will now be able to judge claims on an equal, like-for-like basis – creating a 'level playing field' that truly serves the interests of end-users, specifiers, designers and manufacturers.



The IEC/PAS documents suggest the following list of quality criteria to be considered when evaluating manufacturer's claims:

- a) Rated input power
- b) Rated luminous flux
- c) LED luminaire efficacy
- d) Luminous intensity distribution
- e) Photometric code
- f) Correlated Colour Temperature (CCT)
- g) Rated Colour Rendering Index (CRI)
- h) Rated chromaticity co-ordinate values both initial and maintained
- i) Lumen maintenance code
- j) Rated life (in h) of the LED module and the associated rated lumen maintenance (Lx)
- k) Failure fraction (Fy), corresponding to the rated life of the LED module in the luminaire
- l) Ambient temperature (tq) for a luminaire.

A brief summary of the different quality criteria:

a) Rated input power

The rated input power shows the amount of energy consumed by a luminaire, including its power supply. It is expressed in watts.

b) Rated luminous flux

It corresponds to the light emitted by the luminaire which is expressed in lumen (unit of light output). It is expressed in lumens.

c) LED luminaire efficacy

The measured initial luminous flux divided by the measured initial input power of the same individual LED luminaire. It is expressed in lumens per watt.

d) Luminous intensity distribution

The spatial distribution of the luminous flux graphically depicted in a luminous intensity distribution curve, which is usually expressed in a polar coordinate diagram representing the light intensity as a function of angle about a light source. It is expressed in $\text{cd} = \text{lm} \times \text{sr}^{-1}$.

e) Photometric code

A six digit photometric code that displays the important 'quality of light' parameters: CRI, CCT, chromaticity co-ordinates and luminous flux.

f) Rated Colour Rendering Index (CRI)

The colour rendering of a LED module giving white light is the effect on the colour appearance of objects by conscious or subconscious comparison with their colour appearance under a reference illuminant.

g) Correlated Colour Temperature (CCT)

The colour temperature of a LED module giving white light is determined by comparing the light emitted by the LED module with light of an ideal black-body radiator at the given temperature. It is expressed in Kelvin.

h) Rated chromaticity co-ordinate values both initial and maintained.

The behaviour of the chromaticity co-ordinates of a LED module expressed in two measurement results of both initial and maintained chromaticity co-ordinates.

i) Lumen maintenance code

The measured initial luminous flux (initial value) is normalised to 100% and used as the first data point for determining the LED module life. The maintained luminous flux (maintained value) is measured at 25 % of rated life time up to a maximum of 6.000 hours and expressed as percentage of the initial value. The maintained value determines the lumen maintenance code.

j) Rated life of the LED module and the associated rated lumen maintenance (Lx).

The length of time during which a population of LED modules provides more than the claimed percentage (x) of the initial luminous flux always published in combination with the failure fraction. It is expressed in hours.

k) Failure fraction (Fy), corresponding to the rated life of the LED module in the luminaire.

The percentage (y) of a number of LED modules of the same type at their rated life designates the percentage (fraction) of failures. This failure fraction expresses the combined effect of all components of a module including mechanical, as far as the light output is concerned. The effect of the LED could either be less light than claimed or no light at all.

l) Ambient temperature (tq) for a luminaire.

The ambient temperature around the luminaire related to the specified performance. For a given performance claim the ambient temperature (tq) is a fixed value. It is possible to specify performance claims at different ambient temperatures. It is expressed in degrees Celsius.

Note: please be aware that you have to make sure that the tq shall be in accordance with the actual application where the LED luminaire will be used.

For more information see: 'Apples and pears – a CELMA guiding paper: why standardisation of performance criteria for LED luminaries is important'.



©2012 Koninklijke Philips Electronics N.V.

All rights reserved. Reproduction in whole or in part is prohibited without the prior written consent of the copyright owner. The information presented in this document does not form part of any quotation or contract, is believed to be accurate and reliable and may be changed without notice. No liability will be accepted by the publisher for any consequence of its use. Publication thereof does not convey nor imply any license under patent – or other industrial or intellectual property rights.

Document order number: BANKAPPGUIDE – 08/12 INT. Data subject to change.