

PHILIPS

Maxos LED

LED Industry and
Performer



Maxos trunking

The easy switch to LED



The ideal choice to upgrade your light

Companies are facing an increasing pressure to switch to more efficient, higher quality of light, and need ways to do this cost-effectively. Philips Lighting, with over 20 years' experience in LED lighting, has an ideal retrofit solution. The Maxos LED is a one-to-one replacement for the conventional Maxos and TTX400 rail fluorescent units. With today's LED performance, this trunking system can realize energy savings of at least 55% compared to fluorescent lighting, while the lifetime is at least tripled. The light is fresh and industry compliant, which contributes to a productive and pleasant work environment.

2
Introduction

4 Case study
Koopmannndruck

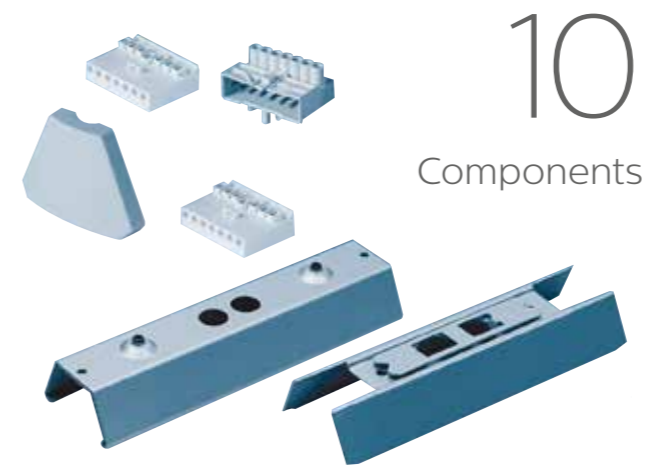


Case study
Carrefour

6



8
Maxos LED



10
Components

15
Applications



GreenWarehouse



18

22
Product codes



Customer
Koopmandruck

Location
Stuhr, Germany

Project team
Koopmandruck, Folker Neetzow (project manager)
Lichtpunkt Weyhe, Dirk Pistol (lighting design and installation)
Henkel & Gerlach GmbH & Co., Holger Lange (wholesaler)

Philips products
Maxos LED (4MX850)

Results

- Innovative LED lighting solution with short cost recovery period (around 3.5 years)
- Significant reduction of CO₂ emissions and high energy efficiency
- Good colour rendering: Ra >80

Maxos
.....
Case study
.....

Innovative LED lighting meets the highest print quality

Druckerei August Koopmann GmbH is an environmentally conscious printer for whom sustainability and climate neutral production are important. The lighting in their 3500 m² production facility needed to be converted to LED. The change involved lighting for machines, work stations and intermediate stock. Legal requirements relating to workplace safety, as well as ecological, technical and human guidelines were also taken into account. Print workers specifically need light that is kind to the eyes with excellent color rendering. And of course the company demanded reliability and energy efficiency. They chose Philips Maxos LED.

A highly efficient light-line system

Maxos is a highly efficient light-line system for production, storage and sales areas. **It is developed for a one-to-one exchange of conventional fixtures, and makes use of existing support rails.** In three days, 800 fluorescent tubes were replaced by 335 Maxos LED light-lines (with both narrow and wide beam optics). To optimize coverage, the calculations for choosing an optical system were made individually for each production space, machine and the intermediate stock areas.

Excellent light quality

Evaluating the quality of print work requires excellent quality of light. The chosen Maxos lighting has a high color rendering index (CRI) of greater than 80. The system also increased illumination from between 200 and 300 lux to as high as 700 lux in some location. This not only creates a more pleasant working environment, it also contributes to safety and welfare of the staff.

Cost savings and lower emissions

Thanks to the high energy efficiency (up to 167 lumens per watt) of Maxos, the company achieved energy savings of almost 67% compared to fluorescent lighting. The CO₂ emissions were reduced by 70%. The company estimates annual savings of 27,000 euros, which translates to a cost recovery period of around three-and-a-half years. And to be ready for the future, the installation uses through wiring so that a connected lighting system can be added to further save energy and reduce costs.

Visually pleasing results

The staff values the bright, pleasant, even lighting. According to the printers, Maxos LED gives color rendition far exceeding the required standards. The results of the new lighting installation are so pleasing that the central warehouse is also planning to convert to LED-Light.



Sustainability is an important part of our company policy. But naturally, profitability is also a decisive factor. With LED lighting we achieve both: reduced energy consumption and improved CO₂ balance of our printing work.”

Knut Winneckens, Manager Koopmandruck



Case study Carrefour

Customer
Carrefour Group

Location
Santiago de Compostela, Spain

Project team
José Francisco Moyá (Technical Director)
Juan Carlos Monteagudo (Philips Consultant)

Products
Philips Maxos LED units, Philips Ecostyle LED luminaires, Philips LCM Displays, Master LED SA tube luminaires, Philips Dynalite DDBC1200 12-channel HF ballast controllers, Philips Dynalite DPMI940 dry contact interfaces, serial bus network (DyNet), Philips Dynalite's EnvisionProject software

Lighting Solutions
Energy efficiency, architectural lighting design and lighting control systems for retail

- Results**
- Philips LED lighting system solution saves 60% of the energy used for lighting
 - Expected to reduce carbon dioxide emissions by 96 tonnes per year
 - If the lighting is set to 100%, the result is very similar to natural light

Maxos
.....
Case study
.....

A fresh look for a famous franchise

With over 9,500 stores over 32 countries, Carrefour knows a thing or two about shopping. When the largest retailer in Europe was opening a new hypermarket in North West Spain, illumination posed a significant challenge. With no points of entry for daylight in the building, the company needed a way to create a natural shopping environment. The question was whether Philips Lighting could help Carrefour to attain the right levels of light and reach its sustainability targets.

A bright, energy-efficient solution

Maxos LED was the answer. For general illumination, it was used to bring natural-looking light to the aisles. The crisp, white brilliance creates a refreshing atmosphere for customers without any uncomfortable glare. Ecostyle LED was used for accent lighting, bringing out the quality in merchandise with excellent colour rendering. These two fixtures represent energy savings of 55% and 50% respectively – a significant saving for a large store.

In the coolers and freezers, Master LED SA tubes were installed to produce an enticing white glow, and deliver 60% energy savings. Their virtually heat-free operation means that cooling units can be kept at the required temperature without using extra power, leading to further cost reductions.

Controllable, dimmable light

The lighting systems are controlled by Philips Dynalite in combination with the DyNet network. The system has been set up to give the store 32 different presets to allow fully-automated control of individual and grouped areas. Eight lighting scenes were also programmed into the system for general lighting requirements, according to Carrefour's scheduled timetable.

Saving energy, reducing emissions

The Philips' lighting system solution saves the hypermarket over 60 per cent of the energy used for lighting compared with Carrefour's standard lighting solutions. This reduces CO₂ emissions by an impressive 96 tonnes per year. What's more, the company enjoys sizeable reductions in its annual maintenance costs. Carrefour is extremely happy with the finished result, both in terms of the ongoing energy savings it can make and the quality of lighting provided in this flagship store.

“

If the lighting is set to 100%, the result is very similar to natural light.”

The easiest way to upgrade towards IFS compliant and efficient lighting

Industrial and retail buildings come in many shapes and sizes, so when switching to LED, you need a system that has the flexibility to match your floor plan. The modular design of Maxos trunking meets these criteria. It enables you to place luminaires, downlights and other

component or accessories at fixed or variable intervals. And to accommodate different applications in the same building, you can choose a light-line, stand-alone luminaires or a combination of both.



The ideal retrofit solution

Controlled light distribution

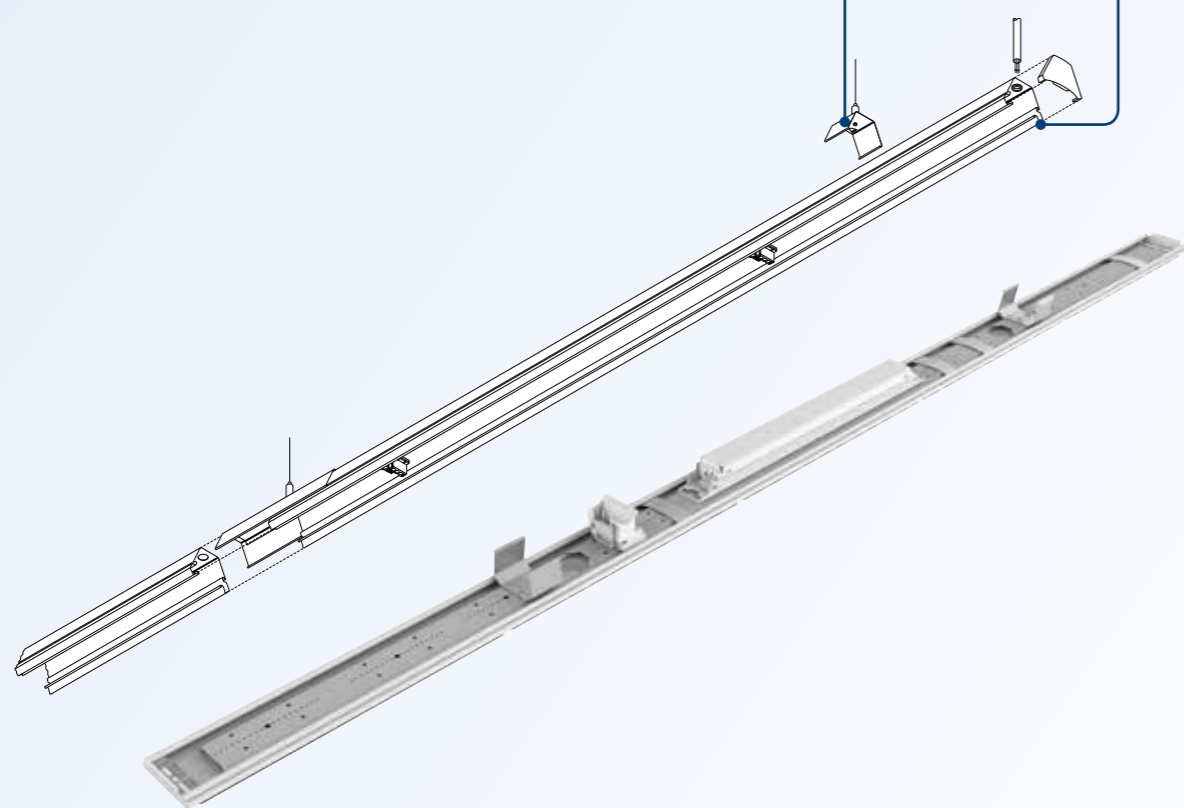
Smaller than conventional fluorescent lamps, Maxos facilitates accurate, controlled light distribution that provide a similar and often better illumination of the application area. The high efficiency reduces the energy costs by at least 55%.

Additional environmental benefits

In addition to its energy efficiency, Maxos trunking has additional environment benefits. Developed in accordance with ISO 14001 and ECO design guidelines, it is lighter, uses fewer materials, and reduces the use of non-recyclable materials compared to conventional light lines. We also minimize the use of packaging materials, a high percentage of which are recyclable.

Components System overview

This diagram provides an overview of the components available for the MAXOS system. The vertical columns refer to system configurations. The horizontal columns indicate the choice of specific types of components.



LED Industry

SUSPENSION BRACKETS

in silver and white

9MX056



SMB: Surface Mounting Bracket



CBA: Chain Bracket Adjustable



MB-SW L1250: Mounting Bracket-Suspension Wire, including 1250mm wire



MB-SW2: Mounting Bracket-Suspension Wire; 2mm diameter



CB: Chain Bracket

TRUNKINGS

in silver and white



4MX056, TL-D 58W length

581 = 1.53 m
582 = 3.06 m
583 = 4.59 m

5x1.5 mm²
5x2.5 mm²
7x2.5 mm²
2x5x2.5 mm²
2x7x2.5 mm²

White
Silver

4MX656, TL5 49W length

491 = 1.47 m
492 = 2.94 m
493 = 4.41 m

5x1.5 mm²
7x1.5 mm²
5x2.5 mm²
7x2.5 mm²
2x5x2.5 mm²
2x7x2.5 mm²

White
Silver

4MX856, Maxos LED Performer module lengths

1200 mm
1800 mm
3600 mm

5x2.5 mm²
7x2.5 mm²

White
Silver

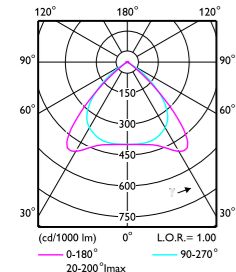
Product family code	Length	Lumen flux	CCT	Driver	Optics	Emergency lighting	Controls	Color
4MX400 *	491	4000	830	PSU	WB		VLC	White
4MX850	581	6600	840	PSD	NB	3hr - 300lm		Silver
		8000	850		DA			
		8700	865		A20			
					VWB			
					DA35-FR			
					DA35-CL			
					Combinations of above			
4MX900	491	4000	830	PSU	WB			White
		5000	840	PSD	MB	3hr - 300lm		Silver
	581	7500			NB			
						DA20		
	L1200	2200				DA30		
		4000				A30		
	L1800					Opal		
		6000				DA30		
	9000				A30			
					Opal			

* = Maxos LED insert for TTX400 trunking rail

Overview of light distributions

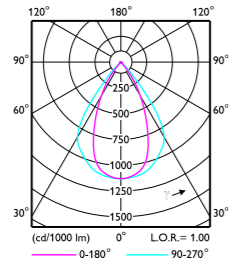
Maxos LED Industry

WB



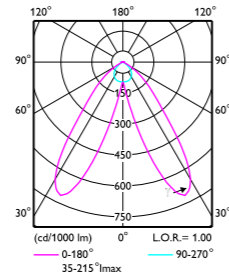
wide beam optic

NB



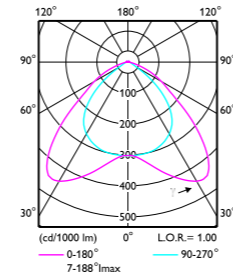
narrow beam optic

DA20



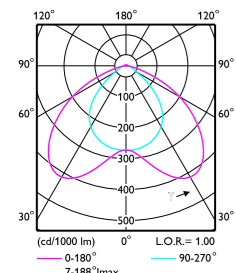
double asymmetrical
20 degrees optic

DA35-CL



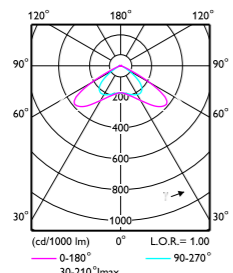
double asymmetrical 35
degrees optic, clear

DA35-FR



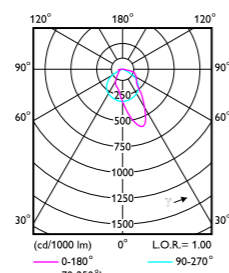
double asymmetrical
35 degrees, frosted

VWB



very wide beam optic

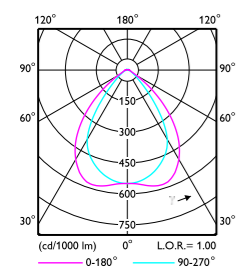
A20



asymmetrical
20 degrees optic

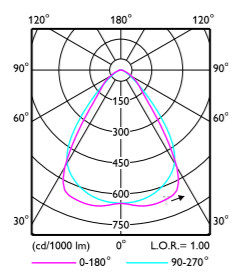
Maxos LED Performer

WB



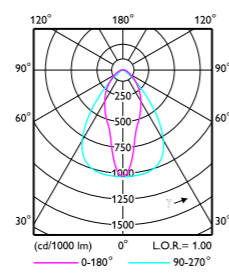
wide beam optic

MB



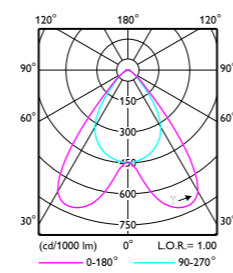
medium beam optic

NB



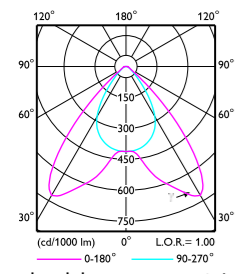
narrow beam optic

DA20



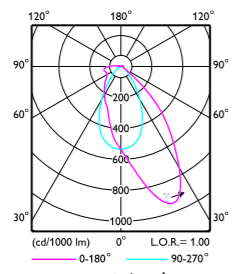
double asymmetrical 20
degrees optic

DA30



double asymmetrical
30 degrees optic

A30



asymmetrical
30 degrees optic



LED equivalents and savings

Fluorescent	Power consumption (W)	LED equivalent	Power consumption (W)	Energy savings (-)
1x TL-D 58W	55; 69 (conventional)	LED40S	25	-55% / -64% (conventional)
2x TL-D 58W	111; 138 (conventional)	LED66S	41	-63% / -70% (conventional)
1x TL5 49W	54	LED40S	25	-54%
2x TL5 49W	110	LED66S	41	-63%
1x TL5 80W	88	LED66S	41	-53%
2x TL5 80W	176	LED87S	59	-66%



The right light for industrial applications

Substantial energy savings for a moderate investment

The industrial sector needs lighting solutions that meet relevant norms and allow a fast payback and total cost of ownership (TCO). Maxos LED satisfies these requirements in factories and warehouses. And for existing users of Maxos or TTX400 fluorescent lighting, it's a one-to-one replacement that simplifies the shift to LED (compatible with TL5 and TL-D lengths).

Performance, quality and low cost of ownership

For a relatively low initial investment, it offers best-in-class energy savings (55% or more is achievable) while delivering high lux levels at the required color temperatures and glare factors. Compared to a conventional fluorescent installation, this highly efficient LED solution offers full payback in less than three years. Maxos LED is available in a range of color temperatures and glare factors, and has a color rendering index (CRI) of 80+.

Exchangeable modular installation

It is a system comprising exchangeable mid-power LED boards mounted on a standard Maxos trunking rail. The range of narrow, wide, double asymmetric and asymmetric lenses gives you the flexibility to tailor light distribution to match your requirement. The system is fast to install and maintain.

GreenWarehouse enabled

Maxos trunking is GreenWarehouse ready, enabling you to define lighting zones, set dimming levels and plan lighting patterns using motion sensors and lighting controls.

Warehousing, food production and more

Many industrial applications have special requirements, for example, the high ceilings and narrow aisles typical in warehouses. Maxos LED has the optics to cater for this. There are no loose components or glass in the lighting installation either.



The right light for retail applications

A 1:1 replacement

With Maxos, it's never been easier for supermarkets to switch to LED. Maxos LED is a direct retrofit replacement for conventional Maxos and TTX400 rail fluorescent units. A quick and simple way to start saving up to 55% in energy.

Modern atmosphere

You'll appreciate the excellent light quality too. Maxos LED provides a bright, pleasant and uniform light with a high color rendering index CRI >80. Not only will it create a comfortable and safe working environment for staff, it will also ensure your store will shine like never before.

Highly efficient

Maxos LED is a highly efficient line-light system for the whole store, from production and storage areas to the sales floor. With a high energy efficiency it optimizes coverage for each space and offers instant savings compared with fluorescent lighting.

Ready to be connected to StoreWise

Today's supermarkets need flexible and intuitive lighting systems to meet the demands of customers and the store. Maxos is ready to be connected to the Philips' StoreWise system. StoreWise combines the best of LED and controls in a flexible package to save on costs, adjust your lighting to everyday demands and create a more engaging customer experience.

Using light to transform your business



Benefit from GreenWarehouse

Thanks to their long lifetime and low energy use, LEDs are already highly attractive to energy-intensive businesses. Controllable, dimmable, and with the option of presence detection, LEDs unlock energy savings and eliminate inefficiencies to create instant value. With Maxos, you can also benefit from GreenWarehouse, which lets you create lighting ‘bundles’ using motion sensors and wireless controls. With GreenWarehouse, you define your own lighting zones, set your own dimming levels and plan the duration of particular lighting patterns. In doing so, you can create an environment that suits the exact needs of your business. And it’s quick and easy to do, thanks to ‘plug and play’ installation. You’re ready to go with the minimum of fuss.

Control your space with light

GreenWarehouse can be tailored to meet the exact needs of your business:

- Choice of energy-efficient LED luminaires
- Wireless controls for easy operation
- Plug and play for easy installation
- Motion sensors for presence detection
- Dimmable to 10% for extra economy
- Suitable for all environments including open areas, racking and cold storage

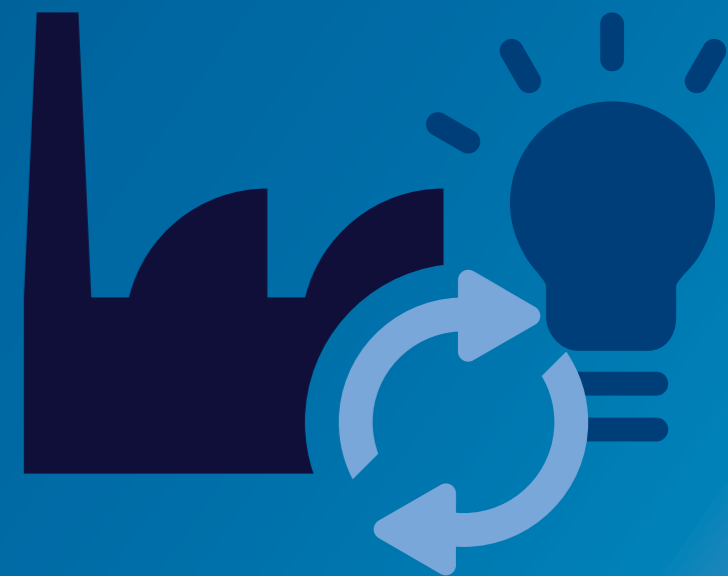


“

Movement detection is **integrated into the fittings**, and **light intensity can be easily reconfigured**.

That’s a big advantage.”

Anders Vaernholt, Infrastructure Manager,
Gothenburg Ro/Ro Terminal AB



StoreWise

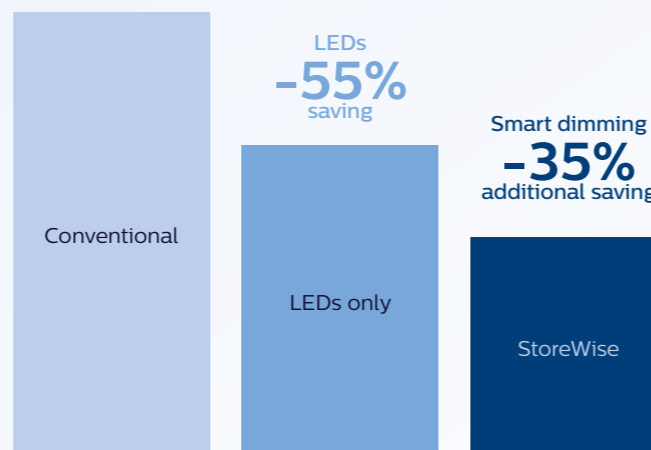
Modern lighting systems can do so much more than simply illuminate a space. That's why we've developed solutions like StoreWise. Not only is it economical and flexible thanks to LED technology, daylight integration and light control, but it also helps you to create a pleasant atmosphere, show off products in their best light and boost sales as a result.

Save even more with StoreWise thanks to smart dimming.

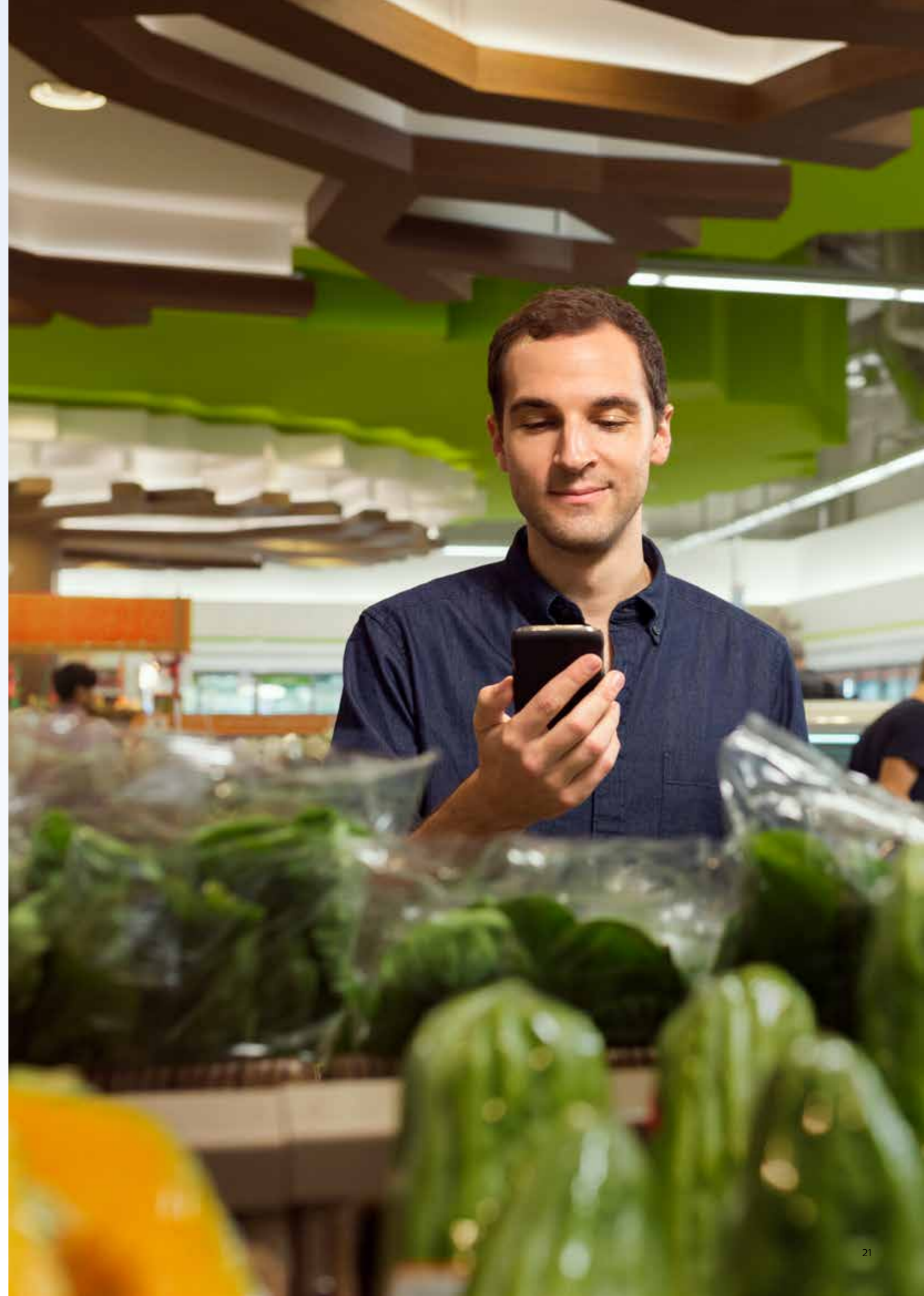
- Create memorable shopper experience through the creation of zones and dynamic effects.
- Maximize energy saving using smart dimming.
- Adjust your lighting via an easy to use app interface.
- Future-proof platform, StoreWise can be easily integrated with an energy management system or other facility operations systems.

Daylight harvesting with skylights	15-20%	energy saving
Light Level preservation	10-15%	energy saving
Scheduling	10-15%	energy saving
Presence control (in staff-only area)	3-5%	energy saving

LED innovation continues



40% more energy efficient than conventional lighting
 LED lifetime 50,000 burning hours compared to traditional lamps with 10,000 - 12,000 hours



Product codes

Trunks

European Ordering Code (EOC)	Material description	European Ordering Code (EOC)	Material description
TL-D, color WH		TL5, color WH	
403073255341999	4MX056 581 7x2.5 WH	403073258349299	4MX656 491 5x1.5 WH
403073255120099	4MX056 582 7x2.5 WH	403073258350899	4MX656 492 5x1.5 WH
403073255121799	4MX056 583 7x2.5 WH	403073258351599	4MX656 493 5x1.5 WH
403073253676499	4MX056 581 2x7x2.5 WH	403073258361499	4MX656 491 7x1.5 WH
403073255477599	4MX056 582 2x7x2.5 WH	403073258362199	4MX656 492 7x1.5 WH
403073253677199	4MX056 583 2x7x2.5 WH	403073258363899	4MX656 493 7x1.5 WH
		403073258352299	4MX656 491 5x2.5 WH
		403073258353999	4MX656 492 5x2.5 WH
	Performer module, color WH	403073258354699	4MX656 493 5x2.5 WH
403073265698199	4MX856 7x2.5 L1200 WH	403073258364599	4MX656 491 7x2.5 WH
403073265697499	4MX856 7x2.5 L1800 WH	403073258365299	4MX656 492 7x2.5 WH
403073265696799	4MX856 7x2.5 L3600 WH	403073258366999	4MX656 493 7x2.5 WH
		403073258371399	4MX656 492 2x5x2.5 WH
		403073258372099	4MX656 493 2x5x2.5 WH
		403073258377599	4MX656 492 2x7x2.5 WH
		403073258378299	4MX656 493 2x7x2.5 WH
TL-D, color SI		TL5, color SI	
403073253685699	4MX056 581 7x2.5 SI	403073258385099	4MX656 491 5x1.5 SI
403073253686399	4MX056 582 7x2.5 SI	403073258386799	4MX656 492 5x1.5 SI
403073253687099	4MX056 583 7x2.5 SI	403073258387499	4MX656 493 5x1.5 SI
403073257922899	4MX056 581 2x7x2.5 SI	403073258397399	4MX656 491 7x1.5 SI
403073258247199	4MX056 582 2x7x2.5 SI	403073258398099	4MX656 492 7x1.5 SI
403073258248899	4MX056 583 2x7x2.5 SI	403073258399799	4MX656 493 7x1.5 SI
		403073258388199	4MX656 491 5x2.5 SI
		403073258389899	4MX656 492 5x2.5 SI
	Performer module, color SI	403073258390499	4MX656 493 5x2.5 SI
403073266068199	4MX856 7x2.5 L1200 SI	403073258400099	4MX656 491 7x2.5 SI
403073266070499	4MX856 7x2.5 L1800 SI	403073258401799	4MX656 492 7x2.5 SI
403073266072899	4MX856 7x2.5 L3600 SI	403073258402499	4MX656 493 7x2.5 SI
		403073258407999	4MX656 492 2x5x2.5 SI
		403073258408699	4MX656 493 2x5x2.5 SI
		403073258413099	4MX656 492 2x7x2.5 SI
		403073258414799	4MX656 493 2x7x2.5 SI

Accessories

European Ordering Code (EOC)	Material description	
Accessories, color WH		
403073210807700	9MX056 CP WH	External coupling piece
403073266280799	9MX056 MB-SW WH	Mounting bracket for suspension wire
403073225921200	9MX056 MB-SW L1250 WH	Mounting bracket with suspension wire L1250
403073225867300	9MX056 MB-SW L3000 WH	Mounting bracket with suspension wire L3000
403073226921100	9MX056 MB-SW-L5000 WH	Mounting bracket with suspension wire L5000
403073226923500	9MX056 MB-SW-L6000 WH	Mounting bracket with suspension wire L6000
403073255678699	9MX056 CB WH	Chain bracket
403073221754000	9MX056 CBA WH	Chain bracket, adjustable
403073266188699	9MX056 MB WH	Surface mounting bracket
403073266187999	9MX056 PB WH	Profile bracket
403073210824400	9MX056 EP WH SET	Starter kit Maxos LED (2 end plates, 1 connector)
403073226499500	9MX056 EP-900 WH SET	Starter kit Maxos LED Performer (2 end plates, 1 connector)
403073260157899	9MX056 BC49 WH	Blind cover TL5 length
403073253881299	9MX056 BC58 WH	Blind cover TL-D length
403073253876899	9MX056 BC L600 WH	Blind cover L600
403073266605899	9MX056 BC L1200 WH	Blind cover L1200
Accessories, color SI		
403073210808400	9MX056 CP SI	External coupling piece
403073266279199	9MX056 MB-SW SI	Mounting bracket for suspension wire
403073225985400	9MX056 MB-SW L1250 SI	Mounting bracket with suspension wire L1250
403073225987800	9MX056 MB-SW L3000 SI	Mounting bracket with suspension wire L3000
403073226922800	9MX056 MB-SW-L5000 SI	Mounting bracket with suspension wire L5000
403073226924200	9MX056 MB-SW L6000 SI	Mounting bracket with suspension wire L6000
403073255676299	9MX056 CB SI	Chain bracket
403073221755700	9MX056 CBA SI	Chain bracket, adjustable
403073266277799	9MX056 MB SI	Surface mounting bracket
403073267456599	9MX056 PB SI	Profile bracket
403073210825100	9MX056 EP SI SET	Starter kit Maxos LED with 2 end plates and 1 connector
403073226500800	9MX056 EP-900 SI SET	Starter kit Maxos LED Performer with 2 end plates and 1 connector
403073260158599	9MX056 BC49 SI	Blind cover TL5 length
403073253888199	9MX056 BC58 SI	Blind cover TL-D length
403073253882999	9MX056 BC-L300 SI	Blind cover L300
403073253883699	9MX056 BC L600 SI	Blind cover L600
Mechanical accessories		
403073255108899	9MX056 SW2	Suspension wire
403073210797100	9MX056 SWF SET	Suspension wire fixation
403073256709600	9MX056 CF-SW-L1250 ZC	Ceiling fixation with suspension wire L1250
403073261548300	9MX056 CF-SW-L3000 ZC	Ceiling fixation with suspension wire L3000
403073254381699	9MX056 ECC	External cable clip
403073217668700	9MX056 LTV Leuchten-Tragsch-VB	Accessory for mounting Pacific LED on Maxos trunk
403073210809100	9MX056 CPI	Internal coupling piece
Electrical accessories		
403073213179200	9MX056 EC7	External connector, 7 poles
403073203217400	9MX056 EC7 (10PCS)	External connector, 7 poles; 10 pieces
Contact Philips Lighting	9MX056 EA7	Electrical adaptor, 7 poles

Product codes

Panels

European Ordering Code (EOC)	Material description	European Ordering Code (EOC)	Material description
Maxos LED inserts		Maxos LED Performer	
403073266539699	4MX850 491 LED40S/840 PSU WB WH	403073266387399	4MX900 LED40S/840 PSD WB WH L1200
403073267398899	4MX850 491 LED66S/840 PSU WB WH	403073266390399	4MX900 LED40S/840 PSD DA20 WH L1200
871869697426199	4MX850 491 LED80S/840 PSU WB WH	403073266444399	4MX900 LED60S/840 PSD WB WH L1800
403073266537299	4MX850 491 LED40S/840 PSU NB WH	403073267147299	4MX900 LED60S/840 PSD WB WH L1800 PR10
871869697421699	4MX850 491 LED66S/840 PSU NB WH		
871869691641499	4MX850 491 LED80S/840 PSU NB WH	403073266379899	4MX900 LED40S/840 PSD WB SI L1200
403073266168899	4MX850 491 LED40S/840 PSD WB WH	403073266382899	4MX900 LED40S/840 PSD DA20 SI L1200
403073266602799	4MX850 491 LED66S/840 PSD WB WH	403073266420799	4MX900 G3 LED48S/840 PSD WB L1800 SI
403073266166499	4MX850 491 LED40S/840 PSD NB WH	403073266436899	4MX900 LED60S/840 PSD WB SI L1800
		403073266439999	4MX900 LED60S/840 PSD DA20 SI L1800
403073266834299	4MX400 491 LED66S/840 PSD WB WH	403073267155799	4MX900 G3 LED60S/840 PSU A30 L1800 SI
871869697008999	4MX400 491 LED66S/840 PSD WB WH-2R		
403073266661499	4MX400 581 LED66S/840 PSD WB WH	12NC (UK specific)	
403073267387299	4MX400 581 LED66S/840 PSD WB WH-2R	919913997698	4MX900 LED60S/840 PSD WB L1800 SI EL3
403073266833599	4MX400 491 LED66S/840 PSD NB WH		
403073266662199	4MX400 581 LED66S/840 PSD NB WH		
871869697014099	4MX400 581 LED66S/840 PSD NB WH-2R		
403073267278399	4MX400 491 LED80S/840 PSD WB WH		
403073267275299	4MX400 581 LED80S/840 PSD NB WH		
871869697016499	4MX400 581 LED80S/840 PSD NB WH-2R		
403073267280699	4MX400 581 LED80S/840 PSD WB WH		
871869697017199	4MX400 581 LED80S/840 PSD WB WH-2R		
403073266693599	4MX850 491 LED66S/830 PSD WB WH		
871869688330399	4MX850 491 LED66S/830 PSD WB WH-2R		
403073266695999	4MX850 581 LED66S/840 PSD WB WH		
871869688108899	4MX850 581 LED66S/840 PSD WB WH-2R		
403073266603499	4MX850 491 LED66S/840 PSD NB WH		
871869697429299	4MX850 491 LED66S/840 PSD NB WH-2R		
403073266696699	4MX850 581 LED66S/840 PSD NB WH		
871869688107199	4MX850 581 LED66S/840 PSD NB WH-2R		
403073267281399	4MX850 491 LED80S/840 PSD NB WH		
871869697432299	4MX850 491 LED80S/840 PSD NB WH-2R		
403073267282099	4MX850 491 LED80S/840 PSD WB WH		
871869697433999	4MX850 491 LED80S/840 PSD WB WH-2R		
871869687641199	4MX850 581 LED80S/840 PSD NB WH		
871869688105799	4MX850 581 LED80S/840 PSD NB WH-2R		
871869687643599	4MX850 581 LED80S/840 PSD WB WH		
871869688106499	4MX850 581 LED80S/840 PSD WB WH-2R		

