



**PHILIPS**

Retail display  
lighting

InteGrade premium white



# Lighting products, brightening faces

Premium white in fashion retail shelf lighting





“With premium white, white is amazingly white and colors are astonishingly vivid.”

# Superior light quality gives products their ultimate appeal

Better presentation makes fashion products look more appealing, creates the ultimate shopping experience and maximizes the impact at the point-of-purchase. The new InteGrade premium white family LED lighting takes product attractiveness to the ultimate level and stimulates the desire to shop. It is designed to maximize product attractiveness through a combination of a superior light quality, excellent light distribution and state-of-the-art efficacy.

## **Illumination beyond your imagination**

InteGrade premium white enhances whites and delivers astonishingly lively rich colors in shelf lighting for fashion retail. This not only improves product attractiveness and enhances the shopping experience; it also brings economic and environmental benefits relating to energy consumption and cost-efficient maintenance. With premium white, you don't need to choose between light quality or energy efficiency. It offers both.





“Choose innovative lighting with the **style, flexibility and functionality** that fashion stores need to **reinforce their identity**”

# Create an experience that **attracts, engages and converts.**



## **Superior quality of light to reinforce your brand**

For fashion retailers, how customers perceive the store is an integral part of the brand image, regardless of whether a retailer aims high or attracts budget shoppers. Premium white delivers exceptional quality of light in applications where product perception is an important part of the shopping experience.

## **The one-shop experience**

Shop lighting is fundamental in visual merchandising. One of today's trends is to combine shelf lighting with spots to generate store concepts that attract and engage customers, and convert visits to sales. InteGrade Shelf lighting can be integrated to create depth within a cabinet. It can visually enlarge the store, make it appealing and create a one-shop experience. It's an almost theatrical, three-dimensional effect

that helps attract and engage customers. We also offer Philips Fortimo SLM down- and spotlight modules with premium white. This makes it possible to create a one-shop experience with accent lighting and shelf lighting with the same unique color spectrum.

## **Step up to InteGrade in fashion retail**

Shelf lighting enhances products' visibility and emphasizes its attractiveness, resulting in superior merchandizing at the point-of-purchase. Clothes, shoes and accessories all look more attractive thanks to amazing whites and astonishing colors. With its ultra slim design and exceptionally long lifetime, InteGrade premium white LED shelf lighting gives you superb color rendering and light where you want it. It enables you to build tailor-made lighting solutions with superior light quality for shelves.

## **Miniature design boosts product visibility**

The slim design of InteGrade not only makes it possible for aesthetically pleasing shelf lighting, but its miniature size means greater product visibility. Attention is focused on the products while the InteGrade remains neatly out of sight.

## **Light where you want it**

When mounted, the light sources are virtually out of sight, so they don't draw attention away from merchandize. For shelf lighting we offer optimized optics systems that ensure exceptional light distribution where it's needed. It also produces a continuous line or plane of light without undesirable hot spots, glare or reflections on the merchandize. The result is brighter, more uniform product illumination, both horizontally and vertically. Merchandize looks more appealing.

## **Take color rendering to the next level**

The latest InteGrade gen 3 LED engines are specially formulated for superior light quality. We optimized the color spectrum to enhance white performance and render astonishing lively rich colors reaching a CRI of 93 while providing an outstanding efficacy up to 125 lumens per watt to keep energy consumption – and the cost of ownership – low. The LED technology delivers efficacy up to 125 lumens per watt to keep energy costs low.

## **Exceptionally long lifetime**

Philips LEDs have minimal output degradation and color shift over time, so the light stays consistent throughout the long service life. Lifetime is an exceptional 50,000 hours.



# The **style, flexibility and functionality** that fashion stores need to reinforce their identity

## **Maximum design flexibility and hassle-free installation**

The ultra-thin InteGrade LED engines maximize aesthetic design flexibility and so enable a vast range of innovative systems that deliver the style and functionality that fashion stores need. Thanks to plug-and-play simplicity, continuous strips can be created by daisy-chaining different lengths. This modular approach promises an impressive choice of engine lengths, color temperatures and accessories.

## **Fewer components needed**

The miniaturized, ultra-thin engines are easily integrated into displays and shelves. The standard engine lengths of 140, 575, 855 and 1150 mm correspond with the common sizes for most applications, reducing the number of components needed per installation. And you can assemble custom length light-lines by combining modules. Design simplicity is assured with a range of mounting profiles, mounting clips, power cables and Philips Xitanium

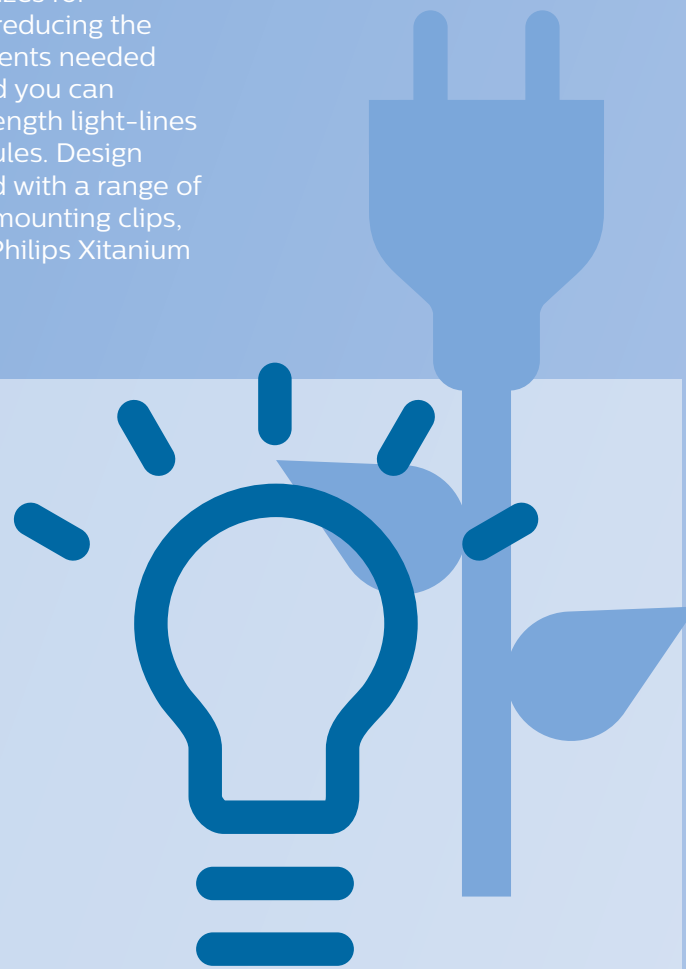
Constant Voltage LED power drivers. The accessories fit together for hassle-free installation.

## **Step up to LED**

Don't leave darker areas where it matters most. InteGrade LEDs and optics ensure that light is uniformly distributed over the whole area.

### **Use Philips LED solutions in shelf application units to:**

- Enhance visibility and attractiveness of products and contribute to the shopping experience.
- Meet wider corporate responsibility goals by reducing overall energy costs.
- Reduce maintenance costs thanks to longer life and fewer lamp changes.
- Shrink carbon footprint as LEDs contain no mercury or lead.







#### Standard modules for tailor-made solutions

InteGrade gen 3 premium white engines are available as high output 'vision' and standard 'value' types.

#### InteGrade gen 3 premium white for shelf lighting

Modules for shelf lighting.



# Key benefits of InteGrade premium white

## Breakthrough performance

- Superior light quality thanks to an optimized color spectrum for enhanced white performance, astonishingly rich colors with a CRI of 93.
- One look and feel in stores for the ultimate shopping experience when combined with premium white spot- and down lighting solutions.
- State-of-art efficacy up to 125 lumens per watt.
- Attention stays focused on the displayed products:
  - Revolutionary optics to direct the light where you want it.
  - Continuous line of light without undesirable hot spots, glare or reflections.
- Consistent light throughout an extremely long life (50,000 hours) thanks to minimal output degradation and virtually no color shift over time.

## Maximum design flexibility

- Miniaturized design for aesthetic integration and focusing attention on displayed products.
- Plug and play solution with the possibility to create continuous strips by daisy chaining different engine lengths with a modular approach.
- Extensive range of engine lengths, color temperatures and accessories.

## True system proposition

- System release with Xitanium Constant Voltage LED power drivers.
- Five year system warranty.





# Philips InteGrade LED products

## InteGrade LED system premium white gen 3

InteGrade LED engines have been designed to match the most common application lengths, reducing the number of components needed per installation; yet maintaining the outstanding flexibility that its modular approach offers, enabling the creation of odd size lighting solutions to match every project specification.

Thanks to a range of engine lengths, fixtures, accessories like mounting profiles, mounting clips, power cables, and Xitanium Constant Voltage LED power drivers the InteGrade LED system gen 3 offers maximum design flexibility and plug-and-play simplicity to enable a vast variety of innovative systems with style, modernity and functionality according the needs of the stores.

For shelf/cove lighting  
InteGrade engine value premium white gen 3  
Product specification

Product name	Power consumption	Lumen	Color Rendering Index	Correlated Color Temperature*	Product Code
	W, typical ± 20%	lm, typical ± 20%	CRI, typical	K	(12NC)
InteGrade engine Va 140mm 930 PW G3	0,8	85	93	3000	9290 015 67506
InteGrade engine Va 575mm 930 PW G3	3,4	380	93	3000	9290 015 67606
InteGrade engine Va 855mm 930 PW G3	4,9	550	93	3000	9290 015 67706
InteGrade engine Va 1150mm 930 PW G3	6,7	760	93	3000	9290 015 67806
InteGrade engine Va 140mm 940 PW G3	0,8	90	93	4000	9290 015 67906
InteGrade engine Va 575mm 940 PW G3	3,4	420	93	4000	9290 015 68006
InteGrade engine Va 855mm 940 PW G3	4,9	600	93	4000	9290 015 68106
InteGrade engine Va 1150mm 940 PW G3	6,7	840	93	4000	9290 015 68206

\* Correlated color temperature within 5 SDCM range

InteGrade engine vision premium white gen 3  
Product specification

Product name	Power consumption	Lumen	Color Rendering Index	Correlated Color Temperature*	Product Code
	W, typical ± 20%	lm, typical ± 20%	CRI, typical	K	(12NC)
InteGrade engine Vi 140mm 930 PW G3	1,6	170	93	3000	9290 015 68306
InteGrade engine Vi 575mm 930 PW G3	6,9	750	93	3000	9290 015 68406
InteGrade engine Vi 855mm 930 PW G3	10,1	1090	93	3000	9290 015 68506
InteGrade engine Vi 1150mm 930 PW G3	13,8	1500	93	3000	9290 015 68606
InteGrade engine Vi 140mm 940 PW G3	1,6	180	93	4000	9290 015 68706
InteGrade engine Vi 575mm 940 PW G3	6,9	800	93	4000	9290 015 68806
InteGrade engine Vi 855mm 940 PW G3	10,1	1160	93	4000	9290 015 68906
InteGrade engine Vi 1150mm 940 PW G3	13,8	1600	93	4000	9290 015 69006

\* Correlated color temperature within 5 SDCM range



InteGrade engine uniform beam vision premium white gen 3  
Product specification

Product name	Power consumption	Lumen	Color Rendering Index	Correlated Color Temperature*	Product Code
	W, typical ± 20%	lm, typical ± 20%	CRI, typical	K	(12NC)
InteGrade engine UB Vi 140mm 930 PW G3	2,5	250	93	3000	9290 015 72506
InteGrade engine UB Vi 575mm 930 PW G3	10	1000	93	3000	9290 015 69706
InteGrade engine UB Vi 855mm 930 PW G3	15	1500	93	3000	9290 015 69806
InteGrade engine UB Vi 1150mm 930 PW G3	20	2000	93	3000	9290 015 69906
InteGrade engine UB Vi 140mm 940 PW G3	2,5	280	93	4000	9290 015 72606
InteGrade engine UB Vi 575mm 940 PW G3	10	1100	93	4000	9290 015 70006
InteGrade engine UB Vi 855mm 940 PW G3	15	1650	93	4000	9290 015 70106
InteGrade engine UB Vi 1150mm 940 PW G3	20	2200	93	4000	9290 015 70206

\* Correlated color temperature within 5 SDCM range



Constant voltage drivers	Product Code
	(12NC)
Xitanium Constant Voltage LED Power Driver 20W - 24V	9290 006 54006
Xitanium Constant Voltage LED Power Driver 80W - 24V	9290 006 53906
Xitanium Constant Voltage LED Power Driver 100W 24V 100/240V	9290 014 30080
XITANIUM 100W 4.1A 24V FIX INT -S	9290 007 71913
LED Driver outdoor 100W 100-240V 24V**	9290 004 85303

\* Only for NAM region

\*\* Only for Japan

Accessories	Product Code
	(12NC)
<b>Profiles</b>	
InteGrade profile 875mm(34")	9290 006 43413
InteGrade profile 1175mm(46")	9290 006 43313
InteGrade profile 2000mm(79")	9290 006 54413
InteGrade profile 2000mm(79") F style	9290 006 54313
InteGrade profile 2000mm(79") L style	9290 006 54513
InteGrade profile 2356mm (93") M style	9290 008 71313
<b>Power cables - to connect engine to driver</b>	
InteGrade power cable 1m(39") black	9290 006 41014
InteGrade power cable 2.5m(98") black	9290 006 41114
InteGrade cable 1m(39") black angle	9290 006 44614
<b>InteGrade cable 2.5m(98") black angle</b>	9290 006 44814
InteGrade power cable 1m(39") white	9290 006 45614
InteGrade power cable 2.5m(98") white	9290 006 44514
InteGrade cable 1m(39") white angle	9290 006 44714
InteGrade cable 2.5m(98") white angle	9290 006 44914
InteGrade spacer cable 0.5m black	9290 006 45014
InteGrade spacer cable 0.5m white	9290 006 45114
InteGrade extension cable 1.5m(59")black	9290 008 74413
InteGrade Y cable black	9290 008 74313
<b>Other accessories</b>	
InteGrade mounting clip shelf arm V2	9290 009 57806
InteGrade engine clip shelf arm G2	9290 015 16006
<b>InteGrade engine mounting clip G2</b>	<b>9290 015 16106</b>
InteGrade mounting clip under shelf	9290 006 43903
InteGrade engine lock inline	9290 006 43713
InteGrade mounting clip canopy	9290 015 71106
InteGrade connector	9290 009 59106
InteGrade magnet for M style profile	9290 008 71413
InteGrade rotational bracket	9290 008 74613



