



PHILIPS

CertaFlux

LED system

LCM400



Lighting food. Brightening faces

Everything what you need, nothing you don't

Discount and price-fighter retail chains focus on costs. They leverage purchasing power to deliver value, and the customer expects affordable prices and a functional shopping experience. The lighting must support this image, which is where Philips CertaFlux LED lighting come in. It has established itself as an energy-efficient way to deliver the quality of light this cost-sensitive retail sector is looking for.

The lowest total cost of ownership

CertaFlux LCM400 combines an affordable initial price with plug-and-play simplicity for fast and easy assembly. They are also supplied in standard lengths optimized for the application. And thanks to a lifetime of 50,000 hours, they're virtually maintenance free as well. This all adds up to a low cost of ownership and rapid payback times.

The right quality of light

The quality of light and performance of CertaFlux LCM400 are aligned with the needs of discount retailer. A typical CRI of 85 and an efficacy up to 105 lumens per watt illuminates products with a uniform attractive light. The LEDs have minimal output degradation and color shift over time, so the light remains consistent throughout their long service life.

Simple yet versatile

To make an affordable yet versatile LED solution, the CertaFlux range focuses specifically on providing what's needed, and omitting what's not. For example, a set of standard lengths that are optimized for shelf lighting. A carefully selected range of accessories is also available. The slim modules are easy to aesthetically integrate into cabinets, enabling you to reduce cabinet depth and increase storage space.



CertaFlux LCM400 LED system gen 3

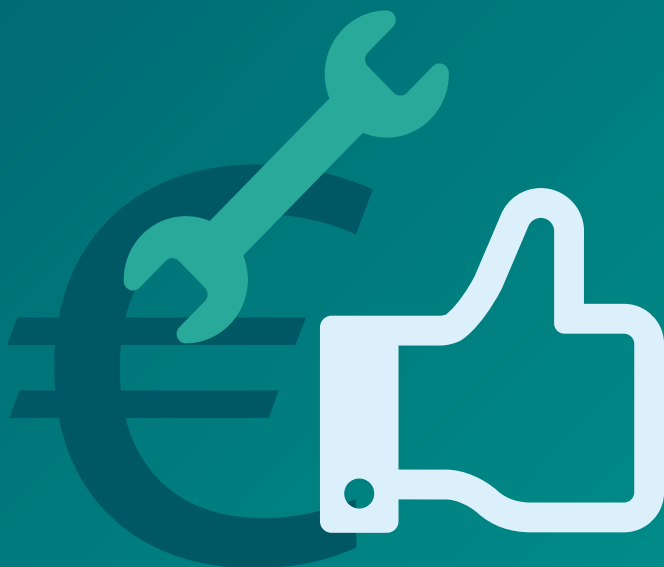
Thanks to a set of standard lengths that are optimized for the application, fixtures, accessories like mounting profiles, mounting clips, power cables, and Xitanium Constant Voltage LED power drivers, the Certaflux LCM400 LED system gen 3 offers fast and easy assembly with plug-and-play simplicity.

Environment

As an added benefit, CertaFlux significantly improves sustainability due to lower energy consumption, reduced waste and elimination of hazardous substances such as mercury and lead. All nice to have in a lighting solution that's already lowering the total cost of ownership.

Product features and benefits

- Lowest Total Cost of Ownership with rapid payback times
- Plug-and-play simplicity for easy and fast assembly
- 2 LED engine lengths (855mm - 1150mm) optimized to standard shelf lengths of 900mm and 1200mm
- Efficacy up to 105 lm/W with 3000K, 4000K, WWR colors
- Natural merchandise color with specially formulated typ. CRI85 LEDs for 3000K, 4000K and min CRI90 LEDs for WWR
- Food version featuring a single color line of light
- Miniaturized slim design for aesthetic integration
- Extensive range of accessories
- Compatibility with Philips constant voltage LED power drivers
- Virtually maintenance-free due to long life-time: >50,000 hours.



For shelf lighting

Product name	Power consumption	Lumen	Color Rendering Index	Correlated Color Temperature*	Product Code
	W, typical ± 20%	lm, typical ± 20%	CRI	K	(12NC)
CertaFlux LCM400 900mm 830 Gen3	5,2	525	85	3000	9290 016 00306
CertaFlux LCM400 1200mm 830 Gen3	7	700	85	3000	9290 016 00506
CertaFlux LCM400 900mm 840 Gen3	5	525	85	4000	9290 016 00406
CertaFlux LCM400 1200mm 840 Gen3	6,7	700	85	4000	9290 016 00606
CertaFlux LCM400 900mm WWR Gen3	4,7	400	90		9290 016 00706
CertaFlux LCM400 1200mm WWR Gen3	6,2	525	90		9290 016 00806

* Correlated color temperature within 5 SDCM range

Constant voltage drivers

Product name	Product Code
	(12NC)
Xitanium Constant Voltage LED Power Driver 20W - 24V	9290 006 54006
Xitanium Constant Voltage LED Power Driver 80W - 24V	9290 006 53906
Xitanium Constant Voltage LED Power Driver 100W 24V 100/240V	9290 014 30080
XITANIUM 100W 4.1A 24V FIX INT -S*	9290 007 71913
LED Driver outdoor 100W 100-240V 24V**	9290 004 85303

* Only for NAM region

** Only for Japan

Accessories	Product Code
	(12NC)
Profiles	
InteGrade profile 875mm(34")	9290 006 43413
InteGrade profile 1175mm(46")	9290 006 43313
InteGrade profile 2000mm(79")	9290 006 54413
InteGrade profile 2000mm(79") F style	9290 006 54313
InteGrade profile 2000mm(79") L style	9290 006 54513
InteGrade profile 2356mm (93") M style	9290 008 71313
Power cables - to connect engine to driver	
InteGrade power cable 1m(39") black	9290 006 41014
InteGrade power cable 2.5m(98") black	9290 006 41114
InteGrade cable 1m(39") black angle	9290 006 44614
InteGrade cable 2.5m(98") black angle	9290 006 44814
InteGrade power cable 1m(39") white	9290 006 45614
InteGrade power cable 2.5m(98") white	9290 006 44514
InteGrade cable 1m(39") white angle	9290 006 44714
InteGrade cable 2.5m(98") white angle	9290 006 44914
InteGrade spacer cable 0.5m black	9290 006 45014
InteGrade spacer cable 0.5m white	9290 006 45114
InteGrade extension cable 1.5m(59")black	9290 008 74413
InteGrade Y cable black	9290 008 74313
Other accessories	
InteGrade mounting clip shelf arm V2	9290 009 57806
InteGrade engine clip shelf arm G2	9290 015 16006
InteGrade engine mounting clip G2	9290 015 16106
InteGrade mounting clip under shelf	9290 006 43903
InteGrade engine lock inline	9290 006 43713
InteGrade mounting clip canopy	9290 015 71106
InteGrade connector	9290 009 59106
InteGrade magnet for M style profile	9290 008 71413
InteGrade rotational bracket	9290 008 74613



©2017 Philips Lighting Holding B.V. All rights reserved. This document contains information relating to Philips Lighting product portfolio. Note that the information provided is subject to change. Philips Lighting does not give any representation or warranty as to the accuracy or completeness of the information included herein and shall not be liable for any action in reliance thereon. The information presented in this document is not intended as any commercial offer and does not form part of any quotation or contract. Trademarks are the property of Koninklijke Philips N.V., Philips Lighting Holding B.V. or their respective owners.

www.philips.com/technology