

**PHILIPS**

Fortimo

LED Systems

SLM gen 6  
SLM gen 7



Exceptional light  
quality, **ultimate**  
**flexibility**

# Light that sells

Creating an attractive retail experience requires lighting perfection. Solutions that can bring out rich colors and crisp whites, highlight textures and finishes. So a store can be seen in the best possible light.

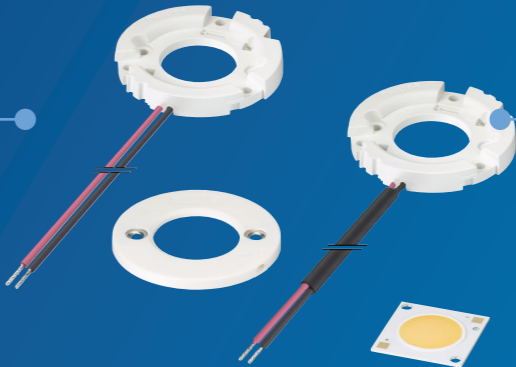
It's a challenge that inspires manufacturers and designers to take retail lighting to the next level. Used to its full potential in retail, lighting makes merchandise, brands and businesses shine. With the latest generation of spot lighting, you can imagine new possibilities and offer unique lighting solutions for all your customer's needs.

### A complete portfolio on a single platform

The Fortimo LED SLM portfolio includes a full range of color temperatures, plus additional types that are optimized for specific lighting applications: CrispWhite for fashion retail, premium white and premium color for all retail applications and Food premium red and Food warm white for supermarkets/food retail.

## What's new in gen 7?

up to **180\*** lm/W  
up to **95 °C**  
Extended Tc



Exceptional rendering of beautiful colors, perfect whites and rich blacks

Extensive Choice of color temperatures, CRI and spectra's

Ultimate flexibility for optimized luminaire performance

Easy configuration of light level through our SimpleSet technology

Small Light Emitting Surface (LES) sizes

Efficacies up to 180\* lm/W or higher

Extended Tc of up to 95 °C possible

Range covers 700 lm to 10,000 lm

\* Fortimo SLM C 840 1216 L23 2828 G7 - 849mA - 5000lm Tc=75C



### A perfect fit for every stage

The Fortimo LED SLM portfolio allows you to select a product based on quality of light, lumen per Watt or lumen per Euro. Each module is also interchangeable, enabling retailers to create different lighting effects throughout the entire store with just one consistent luminaire range.

“

Optimized lighting makes merchandise shine.”



# Quality that shines

We know that the quality of your merchandise has a direct effect on sales. When you bring out the quality of the products on display, you encourage repeat visits and build a desirable reputation.

With this in mind, we are now placing even greater emphasis on the quality of our Fortimo LED SLM gen 6 and gen 7 systems. There are six areas in which this is most evident:



**Quality lighting**  
Enhancing spaces, products and well-being



**Quality assurance**  
Reliable, thoroughly-tested components



**Quality innovation**  
World-leading connected lighting



**Quality people**  
Guidance and inspiration from our industry experts



**Quality support**  
Technical and operational backup, on and off-line



**Quality leadership**  
Future-proof, standards-based solutions

**Our ongoing focus on quality will enable you to offer high-value, reliable solutions. Together we can make sure your customers always have the right connected lighting.**



# This is what we call “ultimate flexibility”.

Quality of light has always been an essential aspect of lighting. In the past each lighting technology had its unique characteristics. For different quality of light, adoption of another lighting technology was required, i.e. halogen vs quartz metal halide. MASTERColour CDM technology changed this landscape completely; retailers had the choice between CRI 80 and CRI 90 light sources, different white tones and a choice of various color temperatures.

With Fortimo LED SLM we offer our customers an even wider range of options, all within one portfolio. This allows customers to select any light color, CRI, white tone and Lm package without having to change the complete fixture. This is what we call “ultimate flexibility”.



# Create a unique lighting experience

Fortimo LED SLM range provides a fantastic color experience with deep color saturation, natural white tones and color consistence. What's more, the deep saturation of reds (R9), lives up to today's requirements in retail lighting. For high efficient applications also CRI >70 and CRI > 80 are available with the same form factor and driver compatibility.

Fortimo SLM offers a wide range of color temperatures: warm white light in 2700, 3000 and 3500 K, neutral white light in 4000 K and cool white in 5000 K. And thanks to its exceptional color consistency (MacAdam Ellipse of 3 SDCM) and very limited color spread over lifetime, the quality of light in your store is assured.

“

Thanks to premium white I don't need to make a choice between light quality and energy efficiency. **It offers the best of both in 1 solution.**”

**Fortimo LED SLM CrispWhite**  
CrispWhite takes LED light quality to exceptional levels. CrispWhite technology offers unparalleled rendering of whites and colors within one light source. A unique solution that is unbeatable for high-end fashion retail applications.

CrispWhite technology is available in Fortimo SLM gen 6 all lumen packages and for narrow beam applications (LES sizes 6.5-19 mm).

**Fortimo LED SLM premium white**  
Premium white offers excellent light quality with a very good total cost of ownership. It's specially designed for spot and accent lighting in fashion retail, hospitality and supermarket applications where light quality and total cost of ownership are key requirements. Fortimo SLM premium white is available in 3000K (CRI 80 & 90) when a soft 3000K ambients preferred. For more bright environments or in case a higher energized atmosphere is needed Fortimo SLM premium white is also available in 3500K and 4000K.



**Fortimo LED SLM Food warm white and Food premium red**

The Fortimo LED SLM gen 6 warm white creates a tasteful, warm color impression that makes fresh food, such as fruit, vegetables and bread, look highly attractive. The Fortimo LED SLM gen 6 Food premium red has been developed with a tuned color spectrum that enhances red and simultaneously displays white in a clear and fresh way. It creates a punchy contrast between the two colors, enhancing the appearance of fresh meat. Both products are available in LES size 15mm and 19mm.



**Fortimo LED SLM premium color**  
Premium color is the latest innovation wrt light quality. Premium color is the result of capturing the strengths of LED technology. It answers the question “How can we make the best LED spectrum possible?”. Premium color combines bright whites, crisp blacks and perfect saturated colors without forgetting the importance of energy efficiency. Premium color is created to enhance the shopping experience. It adds energy in a room and it boosts the perceived value of products on display. Premium color is available in all Fortimo SLM form factors. This means it can be used immediately in existing Fortimo SLM applications to offer a different experience with the same luminaire.





# Light up desire

For retail applications, creating a unique and dramatic ambience can entice people to come into a store. It also encourages them to stay for longer. And the more time they spend in store, the more they're likely to spend at the checkout. Our Fortimo LED lighting solutions are designed to light up desire. From Fortimo LED SLM premium white that combines excellent light quality with unrivaled efficiency to Fortimo LED SLM CrispWhite that creates the ultimate store experience.



## Fashion

### Fortimo LED SLM



As energy costs are high on the retail agenda, our aim is to develop the most efficient light sources that offer good quality of light. This portfolio includes several propositions that are tailored for Fashion Retail ranging from 2700 K, 3000 K, 3500 K, 4000 K with a color rendering index of CRI>70, CRI>80 and CRI>90.

#### Specifications

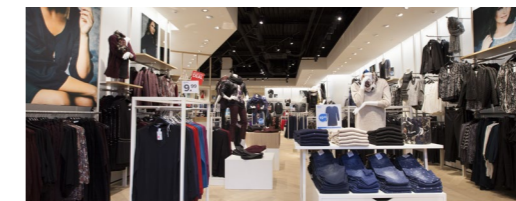
2700K, 3000K, 3500K, 4000K & 5000K on BBL

CRI 70, 80 or 90

Up to 177 lm/W

(Fortimo SLM C 830 1208 L15 2024 G7 - 350mA - 2000lm - Tc=75 °C)

### Fortimo LED SLM premium white



Excellent light quality with the perfect total cost of ownership; that's the ultimate combination that fashion retailers are looking for. Fortimo LED SLM premium white achieves exactly the right balance with high rendering of colors and beautifully whites without impacting energy efficacy. The must-have light source for fashion stores and shopping malls.

#### Specifications

3000K, 3500K & 4000K below BBL

CRI 80 or 90

172 lm/W (Fortimo SLM C 830 PW 1208 L15 2024 G7 - 360mA - 2000lm - Tc=75 °C)

Best light quality possible without sacrificing efficacy

#### Explore more

[www.lighting.philips.co.uk/premiumwhite](http://www.lighting.philips.co.uk/premiumwhite)

### Fortimo LED SLM CrispWhite



Since its introduction, Fortimo LED SLM CrispWhite has revolutionized fashion retail applications. It's the first light source that can make whites appear pure, bright and crisp at the same time as making other colors appear warm, saturated and intense. Perfect for high-end stores and chic boutiques. The result is a totally new color experience. So you can promise fashion retailers all the advantages of LED, but with the added benefit of enhanced rendering for both whites and colors.

#### Specifications

3000K below BBL

CRI 90

97 lm/W (1208 930CW - 3000lm - Tc=70 °C)

CrispWhite effect

#### Explore more

[www.lighting.philips.co.uk/crispwhite](http://www.lighting.philips.co.uk/crispwhite)

### Fortimo LED SLM premium color



Premium color combines bright whites, crisp blacks and perfect saturated colors without forgetting the importance of energy efficiency. Premium color is created to enhance the shopping experience. It adds energy in a room and it boosts the perceived value of products on display.

#### Specifications

3000K below BBL

CRI 90

131 lm/W

(Fortimo SLM C 930 PC 1208 L15 2024 G7 - 462mA - 2000lm - Tc=75C)

Bright whites, Crisp blacks and perfect colors

# High-density spot light LED modules that sell



Fashion

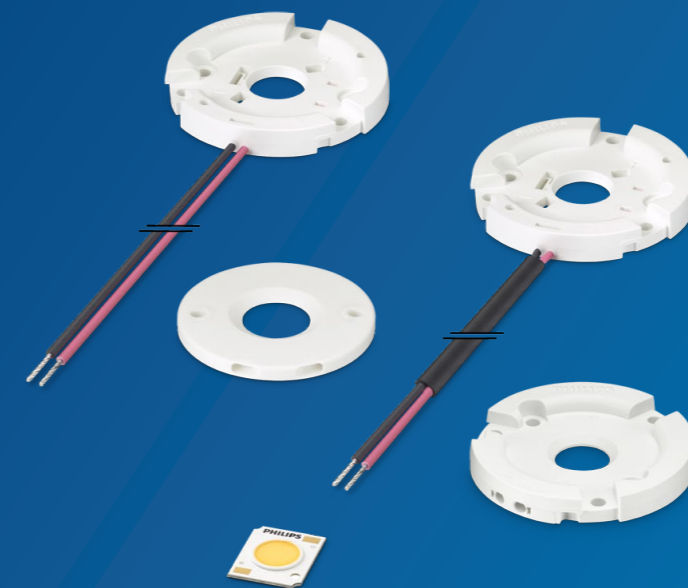
In fashion retail, the physical shopping experience is gaining importance as the decision moment of the customer in the store is key to generate sales, even for sales via online platforms. This makes it essential to create an atmosphere that keeps customers in the store.

Creating an attractive fashion retail experience requires lighting that brings out rich colors and stunning whites as well as allowing different beam angles to be used to create contrast and drama. We help you to take retail lighting to the next level with LED modules that ensure merchandise – and your brand – shines. The latest generation, Fortimo LED SLM gen 7, extends the possibilities to differentiate by combining a high punch effect with narrow beam optics in miniaturized luminaire designs.



## Key features and benefits

### Fortimo SLM gen 7 HD



Up to 3000 lumen with a LES size of 9 mm

High density for optimized luminaire performance

Small Light Emitting Surface (LES) size for high efficient narrow beam optics

Exceptional rendering of whites and rich colors

Extensive Choice of color temperatures, CRI and spectra

Efficacies up to 115 lm/W\* or higher

Extended Tc of up to 95°C possible

5 year warranty

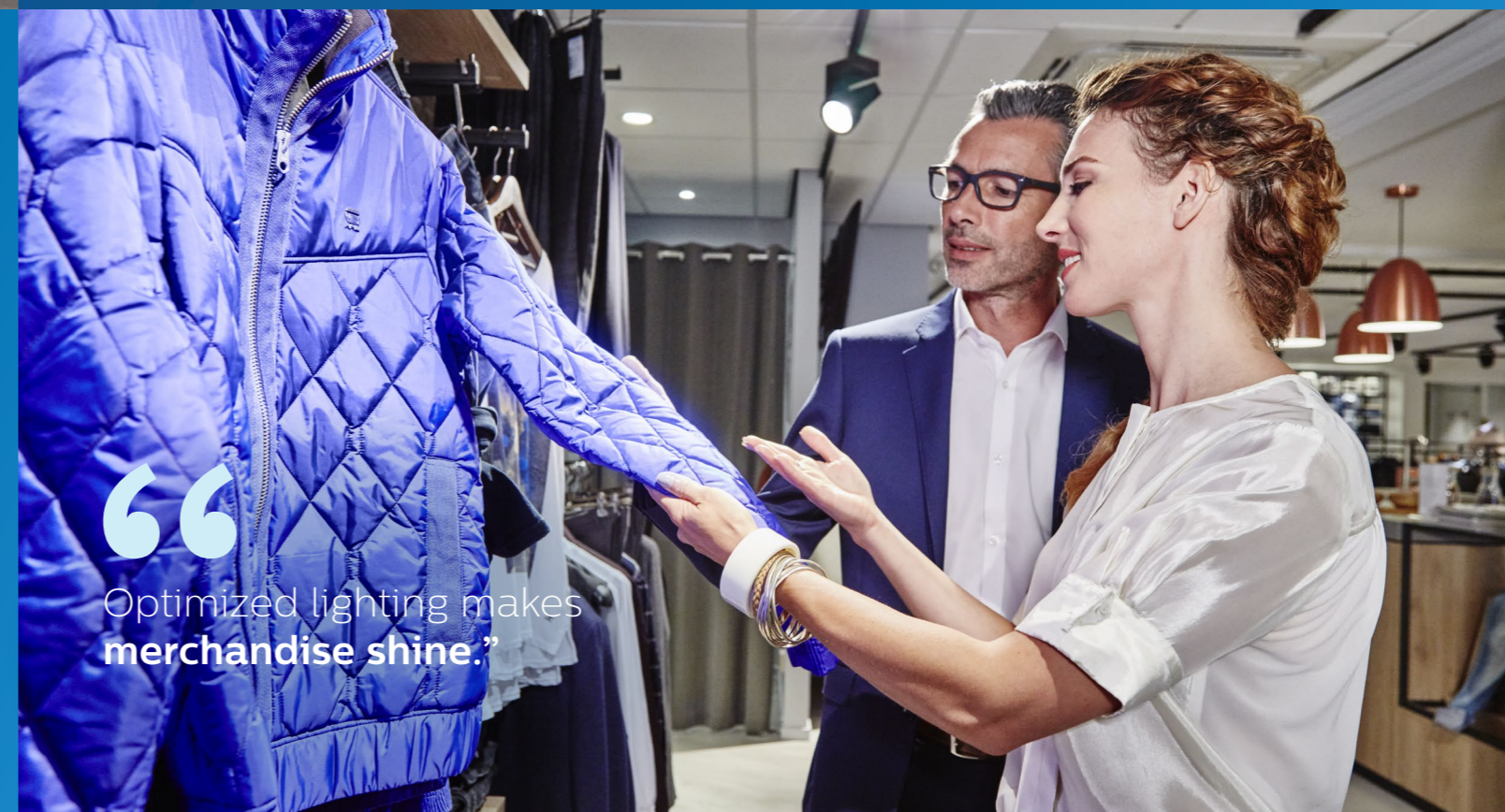
\* Fortimo SLM C 840 1204 L09 1619 G7 - 700 mA - 2960 lm - Tc=75 °C

### Better aesthetics and narrower beam angles

Philips Fortimo SLM LED modules deliver superior Quality of Light. The latest to join the growing portfolio is a high-density LED module for spot applications. The Fortimo SLM gen 7 HD features a larger number of LEDs on a small surface to produce a narrow beam with high output. The Fortimo LED SLM HD portfolio makes it possible to reach up to 1500lm out of a COB with a LES size of only 6.5mm, and up to 3000lm out of a COB with a LES size of just 9 mm. The small LES size enables more efficient optics to direct the light where it's needed, while the compact size gives more freedom in design in terms of aesthetics, beam angle and miniaturization.

### Fortimo LED SLM gen 7 HD premium white

Premium white offers excellent light quality with a very high energy efficiency. It's specially designed for spot and accent lighting in fashion retail, hospitality and supermarket applications where light quality and total cost of ownership are key requirements. Combined with the Fortimo SLM HD technology, it is the perfect portfolio to offer the best quality of light combined with miniaturization and energy efficiency for narrow beam, high punch applications. Premium white is available in 3000K, 3500K and 4000K.



“

Optimized lighting makes merchandise shine.”



# Savour every detail

When you're passionate about food, seeing every detail counts. Thanks to two optimized colors, warm white and premium red, you can design luminaires that will tempt customers to fill their baskets.



## Fortimo LED SLM gen 6 Food warm white



The Fortimo LED SLM warm white creates a unique color impression that makes fresh food, such as fruit, vegetables and bread, look incredibly attractive. It brings out the natural brilliance of colors, especially greens, reds and yellows, making them appear warm and saturated. Exactly what retailers expect from your fresh food display lighting.

### Specifications

2500K
CRI 90
90 lm/W (1211 FWW - 3000lm - Tc=70 °C)
Optimized spectrum for fresh food applications

[Explore more  
www.lighting.philips.co.uk/warmwhite](http://www.lighting.philips.co.uk/warmwhite)

## Fortimo LED SLM gen 6 Food premium red

The Fortimo LED SLM premium red is a dedicated solution for fresh meat. It's been developed with a tuned color spectrum that enhances red, yet simultaneously presents white in a clear and fresh way. It's this punchy contrast between the two colors that enhances the appearance of fresh meat. So your solutions have more punch too.

### Specifications

3000K below BBL
CRI 90
94 lm/W (1211 FPR - 3000lm - Tc=70 °C)
Red enhancement

[Explore more  
www.lighting.philips.co.uk/premiumred](http://www.lighting.philips.co.uk/premiumred)



# Your vision, our modules

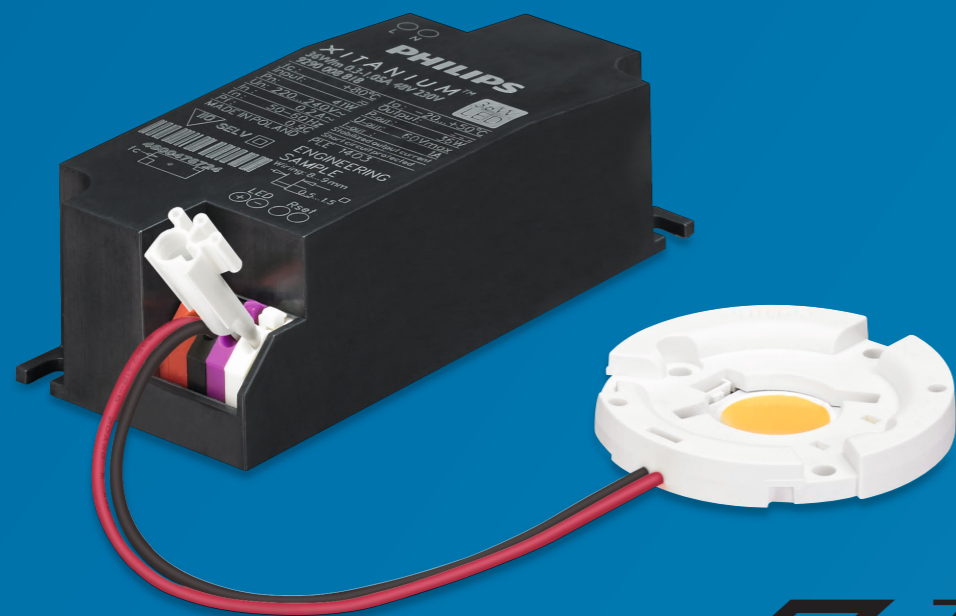
High quality, easy to work with and future-proofed. That's what you get with the Fortimo LED SLM modules.

## A smart system

The Fortimo LED SLM system is backward compatible and easy to design-in. It also has a long and proven lifetime backed up by the Philips five-year system warranty.

The SLM modules promise flexible lumen output settings, consistent light distribution, and a standardized optical, mechanical, electrical and thermal interface. The module design is Zhaga-compliant and is backwards-compatible with previous SLM generation CoB's, holders and drivers.\*

\* Zhaga-compliant and is backwards-compatible with previous SLM generation CoB's, holders and drivers. Measurements on the SLM 3000 lm L15 module show compliance to Zhaga book 3 version 1.2



## Spot light essentials

The Fortimo LED SLM is designed to work with our wide range of Xitanium LED drivers. This smart system approach includes the following spot light essentials:

- Xitanium mini drivers to minimize luminaire designs
- Xitanium window drivers with SimpleSet technology for maximum flexibility
- DALI dimming for scene setting and additional energy savings
- Independent driver with mains loop through, for easy installation with a remote driver
- DC input is enabled to ensure compatibility with a central emergency system.

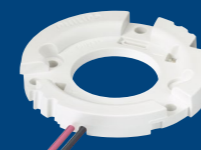
## Easy design-in and approbation

Fortimo LED SLM systems are designed to meet the challenges faced by luminaire manufacturers:

- Easy design-in possibilities with a high Tc point of 95 °C for further miniaturization
- ENEC, CE, REACH and RoHS-certified for quick and easy luminaire approbation
- Full set of complementary thermal and optical partner components available for quick luminaire design.

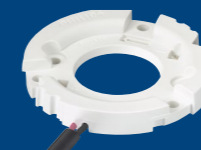
## Maximum flexibility

The modules come with three different holder options. These must be ordered separately:



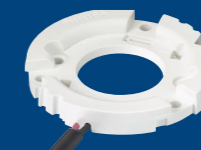
**Standard holder**

with two fixed, pre-molded connection wires (60 cm, pre-tinned)



**Down light holder**

with two fixed, pre-molded connection wires (60 cm, tin-dipped) with an extra sleeve to accommodate strain relief



**ZP holder**

Original Fortimo shaped holder (Zhaga compliant) with poke-in connectors for easy assembly of pre-wired luminaires



**Poke-in holder**

without fixed wires, but with two push-in connection points allowing users to mount their own wires.



**35mm holder**

The smallest poke-in holder which is compatible with the 1202 modules.



# Product and ordering information\*

## Fortimo SLM gen 7

Product name	EOC code	Product name	EOC code
<b>LES size: 6.5mm (HD) - typical lm ouput: 800lm</b>			
Fortimo SLM C 827 1202 L06 1215 G7	871869684451900	Fortimo SLM C 827 1208 L15 2024 G7	871869959005500
Fortimo SLM C 830 1202 L06 1215 G7	871869684454000	Fortimo SLM C 830 1208 L15 2024 G7	871869959008600
Fortimo SLM C 835 1202 L06 1215 G7	871869684457100	Fortimo SLM C 835 1208 L15 2024 G7	871869959011600
Fortimo SLM C 840 1202 L06 1215 G7	871869684462500	Fortimo SLM C 840 1208 L15 2024 G7	871869959014700
Fortimo SLM C 927 1202 L06 1215 G7	871869684465600	Fortimo SLM C 850 1208 L15 2024 G7	871869959017800
Fortimo SLM C 930 1202 L06 1215 G7	871869684470000	Fortimo SLM C 857 1208 L15 2024 G7	871869959020800
<b>LES size: 9mm - typical lm ouput: 1100lm</b>			
Fortimo SLM C 827 1203 L09 1619 G7	871869684513400	Fortimo SLM C 927 1208 L15 2024 G7	871869959023900
Fortimo SLM C 830 1203 L09 1619 G7	871869684516500	Fortimo SLM C 930 1208 L15 2024 G7	871869959026000
Fortimo SLM C 835 1203 L09 1619 G7	871869684519600	<b>LES size: 19mm - typical lm ouput: 4500lm</b>	
Fortimo SLM C 840 1203 L09 1619 G7	871869684522600	Fortimo SLM C 827 1211 L19 2828 G7	871869959041300
Fortimo SLM C 850 1203 L09 1619 G7	871869684545500	Fortimo SLM C 830 1211 L19 2828 G7	871869959044400
Fortimo SLM C 927 1203 L09 1619 G7	871869684548600	Fortimo SLM C 835 1211 L19 2828 G7	871869959047500
Fortimo SLM C 930 1203 L09 1619 G7	871869684551600	Fortimo SLM C 840 1211 L19 2828 G7	871869959050500
<b>LES size: 9mm (HD) - typical lm ouput: 2000lm</b>			
Fortimo SLM C 730 1204 L09 1619 G7	871869675112100	Fortimo SLM C 850 1211 L19 2828 G7	871869959053600
Fortimo SLM C 740 1204 L09 1619 G7	871869675115200	Fortimo SLM C 857 1211 L19 2828 G7	871869959056700
Fortimo SLM C 827 1204 L09 1619 G7	871869675118300	Fortimo SLM C 927 1211 L19 2828 G7	871869959059800
Fortimo SLM C 830 1204 L09 1619 G7	871869675121300	Fortimo SLM C 930 1211 L19 2828 G7	871869959062800
Fortimo SLM C 835 1204 L09 1619 G7	871869675124400	<b>LES size: 19mm - typical lm ouput: 6000lm</b>	
Fortimo SLM C 840 1204 L09 1619 G7	871869675131200	Fortimo SLM C 827 1216 L23 2828 G7	871869959077200
Fortimo SLM C 850 1204 L09 1619 G7	871869675138100	Fortimo SLM C 830 1216 L23 2828 G7	871869959080200
Fortimo SLM C 857 1204 L09 1619 G7	871869675145900	Fortimo SLM C 835 1216 L23 2828 G7	871869959083300
Fortimo SLM C 927 1204 L09 1619 G7	871869675148000	Fortimo SLM C 840 1216 L23 2828 G7	871869959086400
Fortimo SLM C 930 1204 L09 1619 G7	871869675151000	Fortimo SLM C 850 1216 L23 2828 G7	871869959089500
<b>LES size: 13mm - typical lm ouput: 2000lm</b>			
Fortimo SLM C 827 1205 L13 2024 G7	871869684566000	Fortimo SLM C 857 1216 L23 2828 G7	871869959092500
Fortimo SLM C 830 1205 L13 2024 G7	871869684569100	Fortimo SLM C 927 1216 L23 2828 G7	871869959095600
Fortimo SLM C 835 1205 L13 2024 G7	871869684572100	Fortimo SLM C 930 1216 L23 2828 G7	871869959098700
Fortimo SLM C 840 1205 L13 2024 G7	871869684575200		
Fortimo SLM C 850 1205 L13 2024 G7	871869684578300		
Fortimo SLM C 927 1205 L13 2024 G7	871869684581300		
Fortimo SLM C 930 1205 L13 2024 G7	871869684584400		

\* For more information see datasheet

## Fortimo SLM gen 7 premium white

Product name	EOC code	Product name	EOC code
<b>LES size: 6.5mm - typical lm ouput: 800lm</b>			
Fortimo SLM C 830 PW 1202 L06 1215 G7	871869684479300	Fortimo SLM C 830 PW 1208 L15 2024 G7	871869959029100
Fortimo SLM C 930 PW 1202 L06 1215 G7	871869684484700	Fortimo SLM C 930 PW 1208 L15 2024 G7	871869959032100
Fortimo SLM C 935 PW 1202 L06 1215 G7	871869684491500	Fortimo SLM C 935 PW 1208 L15 2024 G7	871869959035200
Fortimo SLM C 940 PW 1202 L06 1215 G7	871869684510300	Fortimo SLM C 940 PW 1208 L15 2024 G7	871869959038300
<b>LES size: 9mm - typical lm ouput: 1100lm</b>			
Fortimo SLM C 830 PW 1203 L09 1619 G7	871869684554700	Fortimo SLM C 830 PW 1211 L19 2828 G7	871869959065900
Fortimo SLM C 930 PW 1203 L09 1619 G7	871869684557800	Fortimo SLM C 930 PW 1211 L19 2828 G7	871869959068000
Fortimo SLM C 935 PW 1203 L09 1619 G7	871869684560800	Fortimo SLM C 935 PW 1211 L19 2828 G7	871869959071000
Fortimo SLM C 940 PW 1203 L09 1619 G7	871869684563900	Fortimo SLM C 940 PW 1211 L19 2828 G7	871869959074100
<b>LES size: 9mm (HD) - typical lm ouput: 2000lm</b>			
Fortimo SLM C 830 PW 1204 L09 1619 G7	871869675154100	Fortimo SLM C 830 PW 1216 L23 2828 G7	871869959101400
Fortimo SLM C 930 PW 1204 L09 1619 G7	871869675157200	Fortimo SLM C 930 PW 1216 L23 2828 G7	871869959104500
Fortimo SLM C 935 PW 1204 L09 1619 G7	871869675160200	Fortimo SLM C 935 PW 1216 L23 2828 G7	871869959107600
Fortimo SLM C 940 PW 1204 L09 1619 G7	871869675163300	Fortimo SLM C 940 PW 1216 L23 2828 G7	871869959110600
<b>LES size: 13mm - typical lm ouput: 2000lm</b>			
Fortimo SLM C 830 PW 1205 L13 2024 G7	871869684587500		
Fortimo SLM C 930 PW 1205 L13 2024 G7	871869684590500		
Fortimo SLM C 935 PW 1205 L13 2024 G7	871869684593600		
Fortimo SLM C 940 PW 1205 L13 2024 G7	871869684596700		

## Fortimo SLM gen 7 premium color

Product name	EOC code	Product name	EOC code
<b>New</b> LES size: 6.5mm - typical lm ouput: 800lm		<b>New</b> LES size: 15mm - typical lm ouput: 3000lm	
Fortimo SLM C 930 PC 1202 L06 1215 G7	8718696 806883 00	Fortimo SLM C 930 PC 1208 L15 2024 G7	8718699 615857 00
<b>New</b> LES size: 9mm - typical lm ouput: 1100lm		<b>New</b> LES size: 19mm - typical lm ouput: 4500lm	
Fortimo SLM C 930 PC 1203 L09 1619 G7	8718699 615796 00	Fortimo SLM C 930 PC 1211 L19 2828 G7	8718699 615888 00
<b>New</b> LES size: 9mm (HD) - typical lm ouput: 2000lm		<b>New</b> LES size: 19mm - typical lm ouput: 6000lm	
Fortimo SLM C 930 PC 1204 L09 1619 G7	8718696 806913 00	Fortimo SLM C 930 PC 1216 L23 2828 G7	8718699 615918 00
<b>New</b> LES size: 13mm - typical lm ouput: 2000lm			
Fortimo SLM C 930 PC 1205 L13 2024 G7	8718699 615826 00		

This overview shows the global portfolio. Please check local availability at your Philips representative.

# Product and ordering information\*



## Fortimo SLM gen 6

Product name	EOC code	Product name	EOC code
<b>LES size: 6.5mm - typical lm output: 800lm</b>		<b>LES size 19mm - Typical lm output: 4500lm</b>	
Fortimo SLM C 827 1202 L06 1215 G6	871869665137700	Fortimo SLM C 740 1211 L19 2828 G6	871869664930500
Fortimo SLM C 830 1202 L06 1215 G6	871869665139100	Fortimo SLM C 827 1211 L19 2828 G6	871869664932900
Fortimo SLM C 835 1202 L06 1215 G6	871869665141400	Fortimo SLM C 830 1211 L19 2828 G6	871869664934300
Fortimo SLM C 840 1202 L06 1215 G6	871869665143800	Fortimo SLM C 835 1211 L19 2828 G6	871869664936700
Fortimo SLM C 927 1202 L06 1215 G6	871869665152000	Fortimo SLM C 840 1211 L19 2828 G6	871869664938100
Fortimo SLM C 930 1202 L06 1215 G6	871869665 154400	Fortimo SLM C 850 1211 L19 2828 G6	871869664940400
<b>LES size: 9mm - typical lm output: 1100lm</b>		Fortimo SLM C 857 1211 L19 2828 G6	871869664942800
Fortimo SLM C 740 1203 L09 1619 G6	871869665072100	Fortimo SLM C 927 1211 L19 2828 G6	871869664944200
Fortimo SLM C 827 1203 L09 1619 G6	871869665074500	Fortimo SLM C 930 1211 L19 2828 G6	871869664946600
Fortimo SLM C 830 1203 L09 1619 G6	871869665076900	<b>LES size 23mm - Typical lm output: 6000lm</b>	
Fortimo SLM C 835 1203 L09 1619 G6	871869665078300	Fortimo SLM C 740 1216 L23 2828 G6	871869664958900
Fortimo SLM C 840 1203 L09 1619 G6	871869665080600	Fortimo SLM C 827 1216 L23 2828 G6	871869664960200
Fortimo SLM C 850 1203 L09 1619 G6	871869665082000	Fortimo SLM C 830 1216 L23 2828 G6	871869664962600
Fortimo SLM C 927 1203 L09 1619 G6	871869665088200	Fortimo SLM C 835 1216 L23 2828 G6	871869664964000
Fortimo SLM C 930 1203 L09 1619 G6	871869665090500	Fortimo SLM C 840 1216 L23 2828 G6	871869664966400
<b>LES size 13mm - Typical lm output: 2000lm</b>		Fortimo SLM C 850 1216 L23 2828 G6	871869664968800
Fortimo SLM C 740 1205 L13 2024 G6	871869665018900	Fortimo SLM C 857 1216 L23 2828 G6	871869664970100
Fortimo SLM C 827 1205 L13 2024 G6	871869665020200	Fortimo SLM C 930 1216 L23 2828 G6	871869664974900
Fortimo SLM C 830 1205 L13 2024 G6	871869664928200	<b>LES size 15mm - Typical lm output: 3000lm</b>	
Fortimo SLM C 835 1205 L13 2024 G6	871869665022600	Fortimo SLM C 740 1208 L15 2024 G6	871869665044800
Fortimo SLM C 840 1205 L13 2024 G6	871869665024000	Fortimo SLM C 827 1208 L15 2024 G6	871869665046200
Fortimo SLM C 850 1205 L13 2024 G6	871869665026400	Fortimo SLM C 830 1208 L15 2024 G6	871869665048600
Fortimo SLM C 927 1205 L13 2024 G6	871869665030100	Fortimo SLM C 835 1208 L15 2024 G6	871869665050900
Fortimo SLM C 930 1205 L13 2024 G6	871869665032500	Fortimo SLM C 840 1208 L15 2024 G6	871869665052300
<b>LES size 15mm - Typical lm output: 3000lm</b>		Fortimo SLM C 850 1208 L15 2024 G6	871869665054700
Fortimo SLM C 740 1208 L15 2024 G6	871869665044800	Fortimo SLM C 857 1208 L15 2024 G6	871869665056100
Fortimo SLM C 827 1208 L15 2024 G6	871869665046200	Fortimo SLM C 927 1208 L15 2024 G6	871869665058500
Fortimo SLM C 830 1208 L15 2024 G6	871869665048600	Fortimo SLM C 930 1208 L15 2024 G6	871869665060800
Fortimo SLM C 835 1208 L15 2024 G6	871869665050900		
Fortimo SLM C 840 1208 L15 2024 G6	871869665052300		
Fortimo SLM C 850 1208 L15 2024 G6	871869665054700		
Fortimo SLM C 857 1208 L15 2024 G6	871869665056100		
Fortimo SLM C 927 1208 L15 2024 G6	871869665058500		
Fortimo SLM C 930 1208 L15 2024 G6	871869665060800		

## Fortimo SLM gen 6 premium white

Product name	EOC code
<b>LES size: 6.5mm - typical lm output: 800lm</b>	
Fortimo SLM C 830 PW 1202 L06 1215 G6	871869665156800
Fortimo SLM C 930 PW 1202 L06 1215 G6	871869665158200
Fortimo SLM C 935 PW 1202 L06 1215 G6	871869665160500
Fortimo SLM C 940 PW 1202 L06 1215 G6	871869665162900
<b>LES size: 9mm - Typical lm output: 1100lm</b>	
Fortimo SLM C 830 PW 1203 L09 1619 G6	871869665092900
Fortimo SLM C 930 PW 1203 L09 1619 G6	871869665094300
Fortimo SLM C 935 PW 1203 L09 1619 G6	871869665096700
Fortimo SLM C 940 PW 1203 L09 1619 G6	871869665098100
<b>LES size 13mm - Typical lm output: 2000lm</b>	
Fortimo SLM C 830 PW 1205 L13 2024 G6	871869665034900
Fortimo SLM C 930 PW 1205 L13 2024 G6	871869665036300
Fortimo SLM C 935 PW 1205 L13 2024 G6	871869665038700
Fortimo SLM C 940 PW 1205 L13 2024 G6	871869665040000
<b>LES size 15mm - Typical lm output: 3000lm</b>	
Fortimo SLM C 830 PW 1208 L15 2024 G6	871869665062200
Fortimo SLM C 930 PW 1208 L15 2024 G6	871869665064600
Fortimo SLM C 935 PW 1208 L15 2024 G6	871869665066000
Fortimo SLM C 940 PW 1208 L15 2024 G6	871869665068400
<b>LES size 19mm - Typical lm output: 4500lm</b>	
Fortimo SLM C 830 PW 1211 L19 2828 G6	871869664948000
Fortimo SLM C 930 PW 1211 L19 2828 G6	871869664950300
Fortimo SLM C 935 PW 1211 L19 2828 G6	871869664952700
Fortimo SLM C 940 PW 1211 L19 2828 G6	871869664954100
<b>LES size 23mm - Typical lm output: 6000lm</b>	
Fortimo SLM C 830 PW 1216 L23 2828 G6	871869664976300
Fortimo SLM C 930 PW 1216 L23 2828 G6	871869664978700
Fortimo SLM C 935 PW 1216 L23 2828 G6	871869664980000
Fortimo SLM C 940 PW 1216 L23 2828 G6	871869664982400

## Fortimo SLM gen 6 Crisp White

Product name	EOC code
<b>LES size: 6.5mm - typical lm output: 800lm</b>	
Fortimo SLM C 930 CW 1202 L06 1215 G6	871869665164300
<b>LES size: 9mm - typical lm output: 1100lm</b>	
Fortimo SLM C 930 CW 1203 L09 1619 G6	871869665100100
<b>LES size 13mm - Typical lm output: 2000lm</b>	
Fortimo SLM C 930 CW 1205 L13 2024 G6	871869665042400
<b>LES size 15mm - Typical lm output: 3000lm</b>	
Fortimo SLM C 930 CW 1208 L15 2024 G6	871869665070700
<b>LES size 19mm - Typical lm output: 4500lm</b>	
Fortimo SLM C 930 CW 1211 L19 2828 G6	871869664956500

## Fortimo SLM gen 6 Food applications

Product name	EOC code
<b>LES size 15mm</b>	
Fortimo SLM C 925 FWW 1208 L15 2024 G6	871869664986200
Fortimo SLM C 930 FPR 1208 L15 2024 G6	871869664988600
<b>LES size 19mm</b>	
Fortimo SLM C 925 FWW 1211 L19 2828 G6	871869664663200
Fortimo SLM C 930 FPR 1211 L19 2828 G6	871869664665600

\* For more information see datasheet

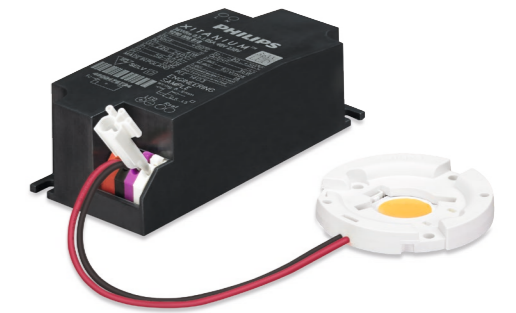
This overview shows the global portfolio. Please check local availability at your Philips representative.



## Driver compatibility

Module type	Xitanium 20W 0.15-0.5A 48V	Xitanium 36W 0.3-1A 48V	Xitanium 50W 0.7-1.5A 48V	Xitanium 50W 0.9-1.4A 48V	Xitanium 16W/m 0.35A 46V SC 230V	Xitanium 23W/m 0.5A 46V SC 230V	Xitanium 28W/m 0.6A 31-46V SC 230V	Xitanium 32W/m 0.7A 46V SC 230V	Xitanium 34W/m 0.8A 42V SC 230V	Xitanium 38W/m 0.9A 42V SC 230V	Xitanium 48W/m 1.05A 46V SC 230V
1202, L06	.	.	.	.	.	.	.	.	.	.	.
1203, L09	.	.	.	.	.	.	.	.	.	.	.
1204, L09	.	.	.	.	.	.	.	.	.	.	.
1205, L13	.	.	.	.	.	.	.	.	.	.	.
1208, L15	.	.	.	.	.	.	.	.	.	.	.
1211, L19	.	.	.	.	.	.	.	.	.	.	.
1216, L23	.	.	.	.	.	.	.	.	.	.	.
Xitanium window drivers*					Xitanium single current drivers*						

\* Check the Xitanium indoor point driver portfolio or [EasyDesignInTool.com](https://www.easydesignintool.com) for all available drivers with the operating point you need.



## Fortimo SLM - Holders

Product name	EOC code
<b>Standard holder</b>	
Fortimo SLM H 1619 G1	871869652205900
Fortimo SLM H 2024 G1	871869650674500
Fortimo SLM H 2828 G1	871869650680600
<b>Downlight holder</b>	
Fortimo SLM H DL 1619 G1	871869652208000
Fortimo SLM H DL 2024 G1	871869650677600
Fortimo SLM H DL 2828 G1	871869650683700
<b>Zhaga Poke-in holder</b>	
Fortimo SLM H ZP 1619 G1	694793912723800
Fortimo SLM H ZP 2024 G1	694793912725200
Fortimo SLM H ZP 2828 G1	694793912727600
<b>Poke-in holder</b>	
Fortimo SLM H PI 1619 G1	871869652211000
Fortimo SLM H PI 2024 G1	871869650700100
Fortimo SLM H PI 2828 G1	871869650702500
<b>35mm holder</b>	
FORTIMO SLM H PI 1215 35 G1	694793913272000



## Easy Design-in Tool

In order to help Luminaire manufacturers find their way through the growing maze of complexity of LED systems and the different specifications they are capable of achieving, Philips developed the Easy Design-in Tool.

This unique cloud-based software

makes you able to select and fine-tune your own LED system by addressing the optical, thermal, electrical and mechanical impacts. On-line, in less than 5 minutes, and with full flexibility.

[EasyDesignInTool.com](https://www.easydesignintool.com)



©2018 Signify Holding. All rights reserved. The information provided herein is subject to change, without notice. Signify does not give any representation or warranty as to the accuracy or completeness of the information included herein and shall not be liable for any action in reliance thereon. The information presented in this document is not intended as any commercial offer and does not form part of any quotation or contract, unless otherwise agreed by Signify.

Philips and the Philips Shield Emblem are registered trademarks of Koninklijke Philips N.V. All other trademarks are owned by Signify Holding or their respective owners.

[www.philips.com/technology](http://www.philips.com/technology)