

PHILIPS

Fortimo SLM

Premium color



Beautiful colors,
perfect whites,
crisp blacks

For today, for tomorrow

A fascinating new light spectrum for retail stores

Philips LED technology has transformed the retail experience with incredible quality of light available for increasingly miniaturized luminaires. Built on our expertise in conventional lighting technologies, they offer the best LED solutions in the market. Now we've decided it's time to think differently. The result is Fortimo LED SLM premium color - the first module of its kind to be developed purely by taking into account the strengths of LED technology.

LED like no other

Premium color offers a fascinating new light spectrum that is optimized to enhance merchandise with a rich, saturated palette that brings out the best in colors, whites and blacks. In suits, beachwear, lingerie and denim. Or in car showrooms, electronics stores and cosmetic departments. At the same time, it has a strong white effect on a

store's ambience, which appears bright and energized. It engages customers on two levels; they are attracted to the vibrant products on display, but they also connect with the brand atmosphere. And because everything is perfectly balanced, the whole experience is easy on the eye.



Quality that shines

We know that highlighting the quality of your merchandise can make a real difference to sales. It makes everything look more desirable and enhances your brand reputation.

That's why we're placing even greater emphasis on the quality of our Fortimo LED SLM premium color modules. There are six areas in which this is most evident:



Quality lighting

Enhancing spaces, products and well-being



Quality assurance

Reliable, thoroughly-tested components



Quality innovation

World-leading connected lighting



Quality people

Guidance and inspiration from our industry experts



Quality support

Technical and operational backup, on and off-line



Quality leadership

Future-proof, standards-based solutions

Our ongoing focus on quality will enable you to offer high-value, reliable solutions. Together we can make sure your customers always have the right LED modules.



What's new in Premium color?

- latest innovation in LED light quality
- whites look even whiter
- blacks appear crisper
- colors look more colorful
- an energizing ambience
- CRI >90, 3000 K

A wide range of applications

The strong white effect and saturated color palette makes Fortimo SLM premium color particularly suitable for lighting:

- fashion
- denim
- suits
- cars
- high-end electronics
- and more...

“

With premium color
you can add more
personality to the
store ambience.”

Energy efficient, easy to design-in

Premium color has been designed to address the key aspects of lighting that are important to designers and store owners, but also luminaire manufacturers. The optimized spectrum comes with only a very small impact in energy efficiency, making it the market-leading technology for color-saturated solutions. What's more, because premium color shares the same form factor and interface as other Fortimo SLM types, it can easily be used in existing Fortimo SLM luminaires covered by the same approbation framework.

The importance of brand atmosphere

For customers, the store experience is the product. They expect an interactive shopping environment that surprises, excites and delights. Lighting design plays a key role in creating the right atmosphere to attract more customers into a store – and keep them shopping for longer. Premium color offers the look and feel to do this at the luminaire level. But it also offers the ultimate in differentiation thanks to its unique and fascinating new light spectrum.





Fortimo SLM gen 7 - premium color

Product name	EOC code	Product name	EOC code
LES size: 6.5mm (HD) - typical lm output: 800lm		LES size: 15mm - typical lm output: 3000lm	
Fortimo SLM C 930 PC 1202 L06 1215 G7	8718696 806883 00	Fortimo SLM C 930 PC 1208 L15 2024 G7	8718699 615857 00
LES size: 9mm - typical lm output: 1100lm		LES size: 19mm - typical lm output: 4500lm	
Fortimo SLM C 930 PC 1203 L09 1619 G7	8718699 615796 00	Fortimo SLM C 930 PC 1211 L19 2828 G7	8718699 615888 00
LES size: 9mm (HD) - typical lm output: 2000lm		LES size: 19mm - typical lm output: 6000lm	
Fortimo SLM C 930 PC 1204 L09 1619 G7	8718696 806913 00	Fortimo SLM C 930 PC 1216 L23 2828 G7	8718699 615918 00
LES size: 13mm - typical lm output: 2000lm			
Fortimo SLM C 930 PC 1205 L13 2024 G7	8718699 615826 00		

Your vision, our modules

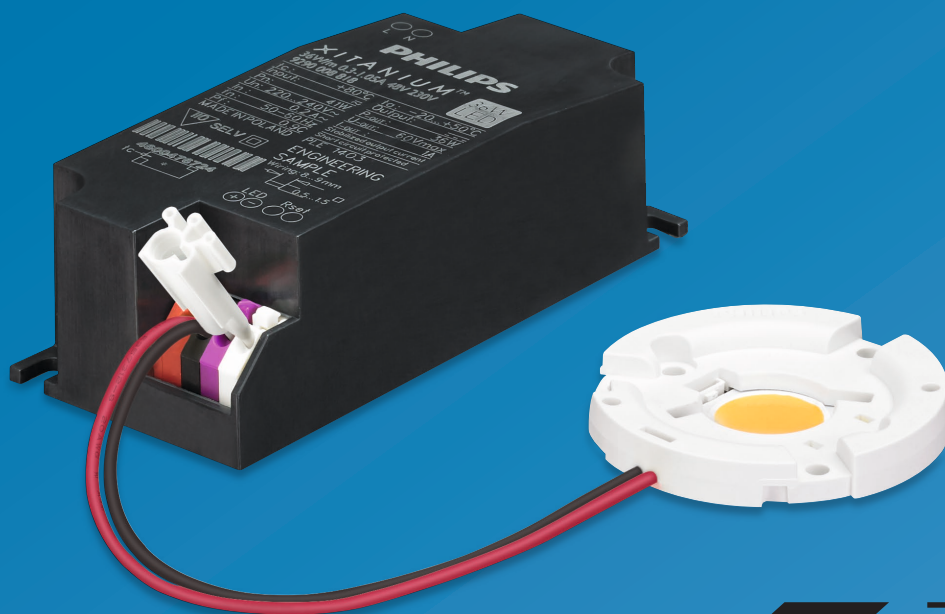
High quality, easy to work with and future-proofed. That's the Fortimo LED SLM modules.

A smart system

The Fortimo LED SLM system is backward compatible and easy to design-in. It also has a long and proven lifetime backed up by the Philips five-year system warranty.

The SLM modules promise flexible lumen output settings, consistent light distribution, and a standardized optical, mechanical, electrical and thermal interface. The module design is Zhaga-compliant and is backwards-compatible with previous SLM generation CoB's, holders and drivers.*

* Zhaga-compliant and is backwards-compatible with previous SLM generation CoB's, holders and drivers. Measurements on the SLM 3000 lm L15 module show compliance to Zhaga book 3 version 1.2



 Zhaga



Spot light essentials

The Fortimo LED SLM is designed to work with our wide range of Xitanium LED drivers. This smart system approach includes the following spot light essentials:

- Xitanium mini drivers to minimize luminaire designs
- Xitanium window drivers with SimpleSet technology for maximum flexibility
- Xitanium Single Current drivers for plug&play solutions
- DALI dimming for scene setting and additional energy savings
- independent driver with mains loop through, for easy installation with a remote driver
- DC input is enabled to ensure compatibility with a central emergency system.

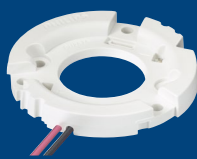
Easy design-in and approbation

Fortimo LED SLM systems are designed to meet the challenges faced by luminaire manufacturers:

- easy design-in possibilities with a high Tc point of 95 °C for further miniaturization
- ENEC, CE, REACH and RoHS-certified for quick and easy luminaire approbation
- full set of complementary thermal and optical partner components available for quick luminaire design.

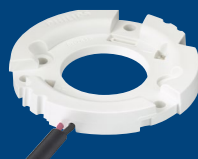
Maximum flexibility

The modules come with three different holder options. These must be ordered separately:



Standard holder

with two fixed, pre-molded connection wires (60 cm, pre-tinned)



Down light holder

with two fixed, pre-molded connection wires (60 cm, tin-dipped) with an extra sleeve to accommodate strain relief



ZP holder

Original Fortimo shaped holder (Zhaga compliant) with poke-in connectors for easy assembly of pre-wired luminaires



Poke-in holder

without fixed wires, but with two push-in connection points allowing users to mount their own wires.



35mm holder

The smallest poke-in holder which is compatible with the 1202 modules.

The Easy Design-in Tool

Create your ideal configuration in minutes. Design the optimal LED system in the fastest, most simple way.

The Easy Design-in Tool is a powerful, time-saving way to speed up the work of those who design or define LED systems. It's a true solution composer and is ideal for all those involved in delivering added-value LED solutions right through the supply chain.

Check out our tool online!

Visit philips.com/easydesignintool





©2018 Signify Holding. All rights reserved. The information provided herein is subject to change, without notice. Signify does not give any representation or warranty as to the accuracy or completeness of the information included herein and shall not be liable for any action in reliance thereon. The information presented in this document is not intended as any commercial offer and does not form part of any quotation or contract, unless otherwise agreed by Signify.

Philips and the Philips Shield Emblem are registered trademarks of Koninklijke Philips N.V. All other trademarks are owned by Signify Holding or their respective owners.

www.philips.com/fortimo