

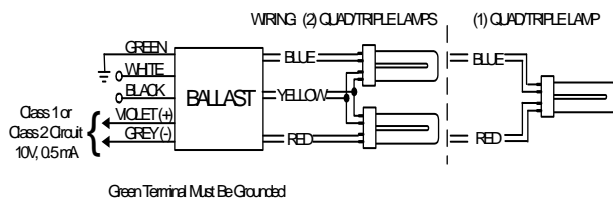


Electrical Specifications

IZT-2S26-M5-BS@120	
Brand Name	MARK 7 0-10V
Ballast Type	Electronic Dimming
Starting Method	Programmed Start
Lamp Connection	Series
Input Voltage	120-277
Input Frequency	50/60 HZ
Status	Active

Lamp Type	Num. of Lamps	Rated Lamp Watts	Min. Start Temp (°F/C)	Input Current (Amps)	Input Power (Watts) (min/max)	Ballast Factor (min/max)	MAX THD %	Power Factor	Lamp Current Crest Factor	B.E.F.
CFQ13W/G24Q	1	13	50/10	0.15	06/18	0.03/1.00	10	0.99	1.6	5.56
CFQ13W/G24Q	2	13	50/10	0.28	19/34	0.03/1.00	10	0.99	1.6	2.94
CFQ18W/G24Q	1	18	50/10	0.19	07/23	0.03/1.00	10	0.99	1.6	4.35
CFQ18W/G24Q	2	18	50/10	0.34	11/41	0.03/1.00	10	0.99	1.6	2.44
CFQ26W/G24Q	1	26	50/10	0.25	08/30	0.03/1.00	10	0.99	1.6	3.33
* CFQ26W/G24Q	2	26	50/10	0.46	13/55	0.03/1.00	10	0.99	1.6	1.82
CFTR13W/GX24Q	1	13	50/10	0.15	06/18	0.03/1.00	10	0.99	1.6	5.56
CFTR13W/GX24Q	2	13	50/10	0.28	19/33	0.03/1.00	10	0.99	1.6	3.03
CFTR18W/GX24Q	1	18	50/10	0.19	07/23	0.03/1.00	10	0.99	1.6	4.35
CFTR18W/GX24Q	2	18	50/10	0.34	11/41	0.03/1.00	10	0.99	1.6	2.44
CFTR26W/GX24Q	1	26	50/10	0.25	06/30	0.03/1.00	10	0.99	1.6	3.33
CFTR26W/GX24Q	2	26	50/10	0.46	11/55	0.03/1.00	10	0.99	1.6	1.82
CFTR32W/GX24Q	1	32	50/10	0.30	09/36	0.03/1.00	10	0.99	1.6	2.78
CFTR42W/GX24Q	1	42	50/10	0.39	09/47	0.03/1.00	10	0.99	1.6	2.13

Wiring Diagram



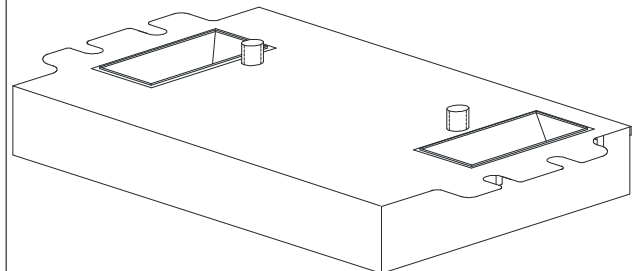
Diag 166

The wiring diagram that appears above is for the lamp type denoted by the asterisk (*)

Standard Lead Length (inches)

	in.	cm.		in.	cm.
Black	0	0	Yellow/Blue		0
White	0	0	Blue/White		0
Blue	0	0	Brown		0
Red	0	0	Orange		0
Yellow	0	0	Orange/Black		0
Gray		0	Black/White		0
Violet		0	Red/White		0

Enclosure



Enclosure Dimensions

OverAll (L)	Width (W)	Height (H)	Mounting (M)
4.98 "	3.00 "	1.18 "	2.00 "
4 49/50	3	1 9/50	2
12.6 cm	7.6 cm	3 cm	5.1 cm



Revised 10/23/07

Data is based upon tests performed by Advance Transformer in a controlled environment and representative of relative performance. Actual performance can vary depending on operating conditions. Specifications are subject to change without notice. All specifications are nominal unless otherwise noted.

ADVANCE TRANSFORMER CO.

O'HARE INTERNATIONAL CENTER · 10275 WEST HIGGINS ROAD · ROSEMONT, IL 60018

Customer Support/Technical Service: Phone: 800-372-3331 · Fax: 847-768-7768

Corporate Offices: Phone: 800-322-2086



Electrical Specifications

IZT-2S26-M5-BS@120	
Brand Name	MARK 7 0-10V
Ballast Type	Electronic Dimming
Starting Method	Programmed Start
Lamp Connection	Series
Input Voltage	120-277
Input Frequency	50/60 HZ
Status	Active

Notes:

Section I - Physical Characteristics

- 1.1 Ballast shall be physically interchangeable with standard electromagnetic or standard electronic ballasts, where applicable.
- 1.2 Ballast shall be available in a plastic/metal can or all metal can construction to meet all plenum requirements.
- 1.3 Ballast shall be provided with poke-in wire trap connectors or integral leads color coded per ANSI C82.11.

Section II - Performance Requirements

- 2.1 Ballast shall be Programmed Start.
- 2.2 VZT-4PSP32-G ballast shall provide Independent Lamp Operation (ILO) allowing remaining lamp(s) to maintain full light output when one or more lamps fail.
- 2.3 Ballast shall be provided with integral protection circuitry to withstand connection of low voltage control leads to mains power supply. In this event, ballast shall default to maximum light output.
- 2.4 Ballast shall contain auto restart circuitry in order to restart lamps without resetting power.
- 2.5 Ballast shall operate from 50/60 Hz input source of 120V or 277V or 347V with sustained variations of +/- 10% (voltage and frequency). IntelliVolt models shall operate from 50/60 Hz input source of 120V through 277V with sustained variations of +/- 10% (voltage and frequency).
- 2.6 Ballast shall be high frequency electronic type and operate lamps at a frequency above 42 kHz to avoid interference with infrared devices and eliminate visible flicker.
- 2.7 Ballast shall have a Power Factor greater than 0.98 at full light output and greater than 0.90 throughout the dimming range for primary lamp.
- 2.8 Ballast shall have a minimum ballast factor of 1.00 (120V and 277V 1-3 lamp models) or 0.88 (120V and 277V 4 lamp models and 347V 2-3 lamp models) or 1.18 (277V 4 lamp HL models) at maximum light output and 0.03 at minimum light output for primary lamp.
- 2.9 Ballast shall provide for a Lamp Current Crest Factor of 1.7 or less.
- 2.10 Ballast input current shall have Total Harmonic Distortion (THD) of less than 10% when operated at nominal line voltage and 100% power.
- 2.11 Ballast shall have a Class A sound rating.
- 2.12 Ballast shall have a minimum starting temperature of 10C (50F) for primary lamp.
- 2.13 Ballast shall provide Lamp EOL Protection Circuit for all T5, T5/HO and CFL lamps.
- 2.14 Ballast shall control lamp light output from 100% - 3% relative light output for series operation T8 and CFL lamps, 100% - 10% relative light output for parallel operation T8 and 100% - 1% relative light output for T5/HO lamps.
- 2.15 Ballast shall ignite the lamps at any light output setting without first going to another output setting.
- 2.16 Ballast shall tolerate sustained open circuit and short circuit output conditions.

Section III - Regulatory Requirements

- 3.1 Ballast shall not contain any Polychlorinated Biphenyl (PCB).
- 3.2 Ballast shall be Underwriters Laboratories (UL) listed, Class P and Type 1 Outdoor; and Canadian Standards Association (CSA) certified where applicable.
- 3.3 Ballast shall comply with ANSI C62.41 Category A for Transient protection.
- 3.4 Ballast shall comply with ANSI C82.11 where applicable.
- 3.5 Ballast shall comply with the requirements of the Federal Communications Commission (FCC) rules and regulations, Title 47 CFR part 18, Non-Consumer (Class A) for EMI/RFI (conducted and radiated).
- 3.6 Ballast shall comply with NEMA 410 for in-rush current limits.

Section IV - Other

- 4.1 Ballast shall be manufactured in a factory certified to ISO 9001 Quality System Standards.
- 4.2 Ballast shall carry a five-year warranty from date of manufacture against defects in material or workmanship, including replacement, for operation at a maximum case temperature of 70C.
- 4.3 Manufacturer shall have a twenty-year history of producing electronic ballasts for the North American market.
- 4.4 Ballast shall be controlled by a Class 1 or Class 2 low voltage 0-10VDC controller.

4.5 Ballast shall be Philips Advance part # _____ or approved equal.



Revised 10/23/07

Data is based upon tests performed by Advance Transformer in a controlled environment and representative of relative performance. Actual performance can vary depending on operating conditions. Specifications are subject to change without notice. All specifications are nominal unless otherwise noted.

ADVANCE TRANSFORMER CO.

O'HARE INTERNATIONAL CENTER - 10275 WEST HIGGINS ROAD - ROSEMONT, ILLINOIS 60018

TELEPHONE: (847)390-5000 FAX: (847)768-7768

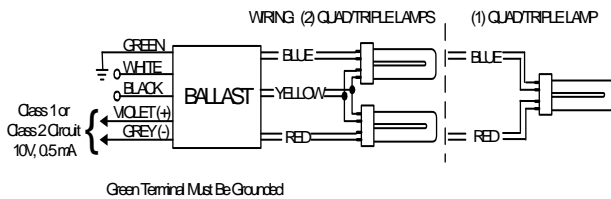


Electrical Specifications

IZT-2S26-M5-BS@277	
Brand Name	MARK 7 0-10V
Ballast Type	Electronic Dimming
Starting Method	Programmed Start
Lamp Connection	Series
Input Voltage	120-277
Input Frequency	50/60 HZ
Status	Active

Lamp Type	Num. of Lamps	Rated Lamp Watts	Min. Start Temp (°F/C)	Input Current (Amps)	Input Power (Watts) (min/max)	Ballast Factor (min/max)	MAX THD %	Power Factor	Lamp Current Crest Factor	B.E.F.
CFQ13W/G24Q	1	13	50/10	0.07	06/18	0.03/1.00	10	0.99	1.6	5.56
CFQ13W/G24Q	2	13	50/10	0.12	09/33	0.03/1.00	10	0.99	1.6	3.03
CFQ18W/G24Q	1	18	50/10	0.09	07/23	0.03/1.00	10	0.99	1.6	4.35
CFQ18W/G24Q	2	18	50/10	0.15	11/41	0.03/1.00	10	0.99	1.6	2.44
CFQ26W/G24Q	1	26	50/10	0.11	08/30	0.03/1.00	10	0.99	1.6	3.33
* CFQ26W/G24Q	2	26	50/10	0.20	13/55	0.03/1.00	10	0.99	1.6	1.82
CFTR13W/GX24Q	1	13	50/10	0.07	06/18	0.03/1.00	10	0.99	1.6	5.56
CFTR13W/GX24Q	2	13	50/10	0.12	19/33	0.03/1.00	10	0.99	1.6	3.03
CFTR18W/GX24Q	1	18	50/10	0.09	07/23	0.03/1.00	10	0.99	1.6	4.35
CFTR18W/GX24Q	2	18	50/10	0.15	11/41	0.03/1.00	10	0.99	1.6	2.44
CFTR26W/GX24Q	1	26	50/10	0.11	08/30	0.03/1.00	10	0.99	1.6	3.33
CFTR26W/GX24Q	2	26	50/10	0.20	13/55	0.03/1.00	10	0.99	1.6	1.82
CFTR32W/GX24Q	1	32	50/10	0.13	09/36	0.03/1.00	10	0.99	1.6	2.78
CFTR42W/GX24Q	1	42	50/10	0.17	09/47	0.03/1.00	10	0.99	1.6	2.13

Wiring Diagram



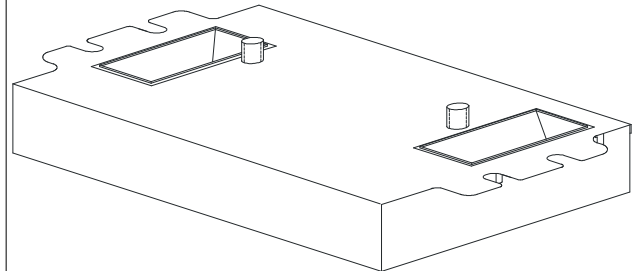
Diag 166

The wiring diagram that appears above is for the lamp type denoted by the asterisk (*)

Standard Lead Length (inches)

	in.	cm.		in.	cm.
Black	0	0	Yellow/Blue		0
White	0	0	Blue/White		0
Blue	0	0	Brown		0
Red	0	0	Orange		0
Yellow	0	0	Orange/Black		0
Gray		0	Black/White		0
Violet		0	Red/White		0

Enclosure



Enclosure Dimensions

OverAll (L)	Width (W)	Height (H)	Mounting (M)
4.98 "	3.00 "	1.18 "	2.00 "
4 49/50	3	1 9/50	2
12.6 cm	7.6 cm	3 cm	5.1 cm



Revised 10/23/07

Data is based upon tests performed by Advance Transformer in a controlled environment and representative of relative performance. Actual performance can vary depending on operating conditions. Specifications are subject to change without notice. All specifications are nominal unless otherwise noted.

ADVANCE TRANSFORMER CO.

O'HARE INTERNATIONAL CENTER · 10275 WEST HIGGINS ROAD · ROSEMONT, IL 60018

Customer Support/Technical Service: Phone: 800-372-3331 · Fax: 847-768-7768

Corporate Offices: Phone: 800-322-2086



Electrical Specifications

IZT-2S26-M5-BS@277	
Brand Name	MARK 7 0-10V
Ballast Type	Electronic Dimming
Starting Method	Programmed Start
Lamp Connection	Series
Input Voltage	120-277
Input Frequency	50/60 HZ
Status	Active

Notes:

Section I - Physical Characteristics

- 1.1 Ballast shall be physically interchangeable with standard electromagnetic or standard electronic ballasts, where applicable.
- 1.2 Ballast shall be available in a plastic/metal can or all metal can construction to meet all plenum requirements.
- 1.3 Ballast shall be provided with poke-in wire trap connectors or integral leads color coded per ANSI C82.11.

Section II - Performance Requirements

- 2.1 Ballast shall be Programmed Start.
- 2.2 VZT-4PSP32-G ballast shall provide Independent Lamp Operation (ILO) allowing remaining lamp(s) to maintain full light output when one or more lamps fail.
- 2.3 Ballast shall be provided with integral protection circuitry to withstand connection of low voltage control leads to mains power supply. In this event, ballast shall default to maximum light output.
- 2.4 Ballast shall contain auto restart circuitry in order to restart lamps without resetting power.
- 2.5 Ballast shall operate from 50/60 Hz input source of 120V or 277V or 347V with sustained variations of +/- 10% (voltage and frequency). IntelliVolt models shall operate from 50/60 Hz input source of 120V through 277V with sustained variations of +/- 10% (voltage and frequency).
- 2.6 Ballast shall be high frequency electronic type and operate lamps at a frequency above 42 kHz to avoid interference with infrared devices and eliminate visible flicker.
- 2.7 Ballast shall have a Power Factor greater than 0.98 at full light output and greater than 0.90 throughout the dimming range for primary lamp.
- 2.8 Ballast shall have a minimum ballast factor of 1.00 (120V and 277V 1-3 lamp models) or 0.88 (120V and 277V 4 lamp models and 347V 2-3 lamp models) or 1.18 (277V 4 lamp HL models) at maximum light output and 0.03 at minimum light output for primary lamp.
- 2.9 Ballast shall provide for a Lamp Current Crest Factor of 1.7 or less.
- 2.10 Ballast input current shall have Total Harmonic Distortion (THD) of less than 10% when operated at nominal line voltage and 100% power.
- 2.11 Ballast shall have a Class A sound rating.
- 2.12 Ballast shall have a minimum starting temperature of 10C (50F) for primary lamp.
- 2.13 Ballast shall provide Lamp EOL Protection Circuit for all T5, T5/HO and CFL lamps.
- 2.14 Ballast shall control lamp light output from 100% - 3% relative light output for series operation T8 and CFL lamps, 100% - 10% relative light output for parallel operation T8 and 100% - 1% relative light output for T5/HO lamps.
- 2.15 Ballast shall ignite the lamps at any light output setting without first going to another output setting.
- 2.16 Ballast shall tolerate sustained open circuit and short circuit output conditions.

Section III - Regulatory Requirements

- 3.1 Ballast shall not contain any Polychlorinated Biphenyl (PCB).
- 3.2 Ballast shall be Underwriters Laboratories (UL) listed, Class P and Type 1 Outdoor; and Canadian Standards Association (CSA) certified where applicable.
- 3.3 Ballast shall comply with ANSI C62.41 Category A for Transient protection.
- 3.4 Ballast shall comply with ANSI C82.11 where applicable.
- 3.5 Ballast shall comply with the requirements of the Federal Communications Commission (FCC) rules and regulations, Title 47 CFR part 18, Non-Consumer (Class A) for EMI/RFI (conducted and radiated).
- 3.6 Ballast shall comply with NEMA 410 for in-rush current limits.

Section IV - Other

- 4.1 Ballast shall be manufactured in a factory certified to ISO 9001 Quality System Standards.
- 4.2 Ballast shall carry a five-year warranty from date of manufacture against defects in material or workmanship, including replacement, for operation at a maximum case temperature of 70C.
- 4.3 Manufacturer shall have a twenty-year history of producing electronic ballasts for the North American market.
- 4.4 Ballast shall be controlled by a Class 1 or Class 2 low voltage 0-10VDC controller.

4.5 Ballast shall be Philips Advance part # _____ or approved equal.



Revised 10/23/07

Data is based upon tests performed by Advance Transformer in a controlled environment and representative of relative performance. Actual performance can vary depending on operating conditions. Specifications are subject to change without notice. All specifications are nominal unless otherwise noted.

ADVANCE TRANSFORMER CO.

O'HARE INTERNATIONAL CENTER - 10275 WEST HIGGINS ROAD - ROSEMONT, ILLINOIS 60018

TELEPHONE: (847)390-5000 FAX: (847)768-7768