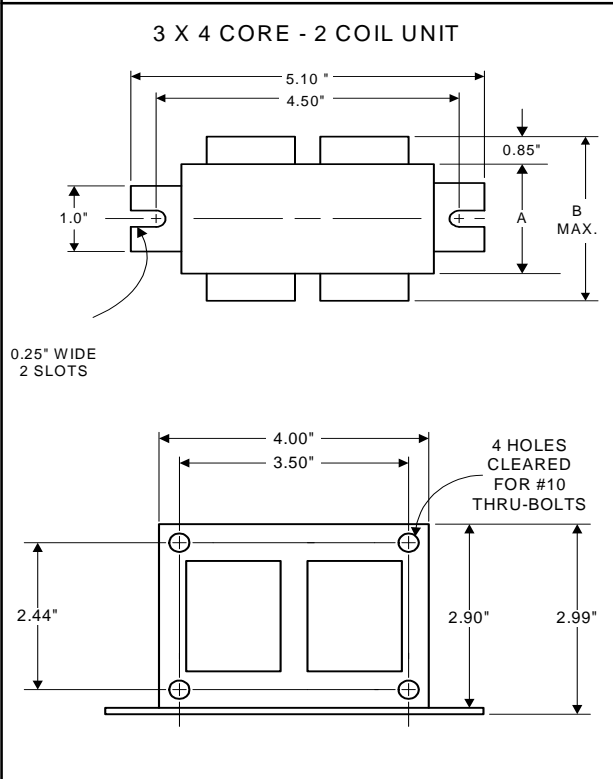




High Pressure
Sodium
Lamp Ballast

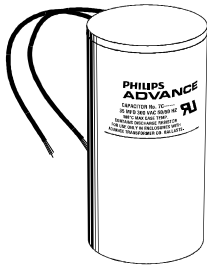
Catalog Number 71A80H8A
For 100W S54
60 Hz CWA
Status: Active

DIMENSIONS AND DATA

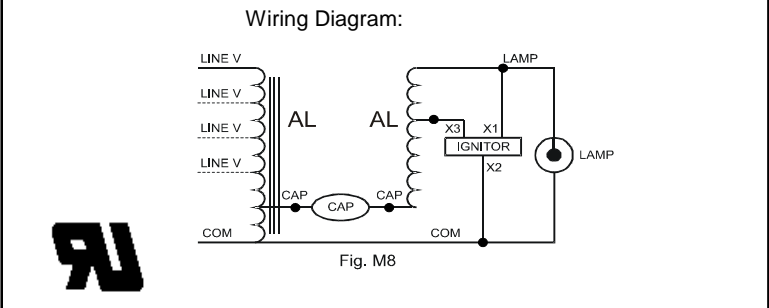


INPUT VOLTS	127	220			
CIRCUIT TYPE	CWA				
POWER FACTOR (min)	90%				
REGULATION	±10%				
Line Volts	WITHIN TRAPEZOID				
Lamp Watts					
LINE CURRENT (Amps)					
Operating.....	1.07	0.62			
Open Circuit.....	0.47	0.27			
Starting.....	0.88	0.50			
UL TEMPERATURE RATINGS	H(180°C)				
Insulation Class	1029				
Coil Temperature Code	D	D			
MIN. AMBIENT STARTING TEMP.	-40F or -40C				
NOM. OPEN CIRCUIT VOLTAGE	120				
INPUT VOLTAGE AT LAMP DROPOUT.....	95	165			
INPUT WATTS	138				
RECOMMENDED FUSE (Amps).....	3	2			
CORE and COIL					
Dimension (A)	2.35				
Dimension (B)	3.89				
Weight (lbs.)	6.55				
Lead Lengths	12"				
CAPACITOR REQUIREMENT					
Microfarads	34.0				
Volts (min.)	180				
Fault Current Withstand (amps)					
60 Hz TEST PROCEDURES (Refer to Advance Test Procedure for HID Ballasts - Form 1270)					
High Potential Test (Volts)					
1 minute	2000				
2 seconds	2500				
Open Circuit Voltage Test (Volts)	110-130				
Short-Circuit Current Test (Amps)					
Secondary Current	2.85-3.10				
Input Current.....	0.62-0.93	0.35-0.54	-	-	-

Capacitor: 7C340P24RA



Capacitance: 34
Dia/Oval Dim: 1.65
Height: 3.7
Temp Rating: 105°C



Ignitor: LI551-J4



Ballast to Lamp Distance (BTL) = 2 feet
Temp Rating: 105°C

Ordering Information	
Order Suffix	Description
500DM	Dry cap, NOM (Mexico) Label, No flag terminals

Data is based upon tests performed by Advance Transformer in a controlled environment and representative of relative performance. Actual performance can vary depending on operating conditions. Specifications are subject to change without notice.