

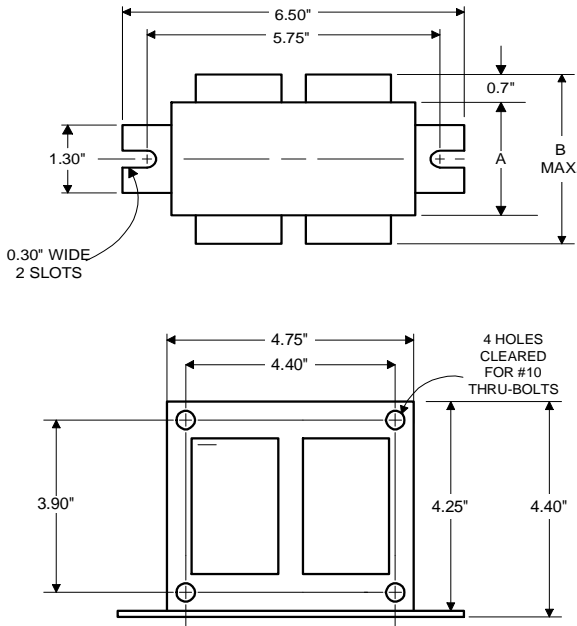


High Pressure  
Sodium  
Lamp Ballast

Catalog Number 71A8443TA  
For 400W S51/M169  
60 Hz CWA  
Status: Active

**DIMENSIONS AND DATA**

4 1/4 X 4 3/4 CORE - 2 COIL UNIT



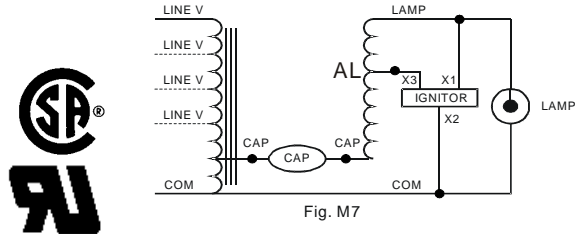
INPUT VOLTS	480				
CIRCUIT TYPE	CWA				
POWER FACTOR (min)	90%				
REGULATION					
Line Volts	±10%				
Lamp Watts	WITHIN TRAPZOID				
LINE CURRENT (Amps)					
Operating.....	0.97				
Open Circuit.....	0.55				
Starting.....	0.75				
UL TEMPERATURE RATINGS					
Insulation Class	H(180°C)				
Coil Temperature Code	1029				
MIN. AMBIENT STARTING TEMP.	-40F or -40°C				
NOM. OPEN CIRCUIT VOLTAGE	190				
INPUT VOLTAGE AT LAMP DROPOUT.....	360				
INPUT WATTS	464				
RECOMMENDED FUSE (Amps).....	3				
CORE and COIL					
Dimension (A)	2.80				
Dimension (B)	4.25				
Weight (lbs.)	16				
Lead Lengths	12"				
CAPACITOR REQUIREMENT					
Microfarads	55.0				
Volts (min.)	240				
Fault Current Withstand (amps)					
60 Hz TEST PROCEDURES (Refer to Advance Test Procedure for HID Ballasts - Form 1270)					
High Potential Test (Volts)					
1 minute	2000				
2 seconds	2500				
Open Circuit Voltage Test (Volts)	170-210				
Short-Circuit Current Test (Amps)					
Secondary Current	6.00-7.40				
Input Current.....	0.50-0.80				

Capacitor: 7C550P24



Capacitance: 55  
Dia/Oval Dim: 1.75  
Height: 5.15  
Temp Rating: 105°C

Wiring Diagram:



Ordering Information

Order Suffix	Description

Ignitor: LI501-H4



Red (X1)  
White (X2)  
Blue (X3)

Ballast to Lamp Distance (BTL) = 2 feet  
Temp Rating: 105°C

Data is based upon tests performed by Advance Transformer in a controlled environment and representative of relative performance. Actual performance can vary depending on operating conditions. Specifications are subject to change without notice.

**ADVANCE TRANSFORMER CO.**

O'HARE INTERNATIONAL CENTER · 10275 WEST HIGGINS ROAD · ROSEMONT, IL 60018  
Customer Support/Technical Service: Phone: 800-372-3331 · Fax: 847-768-7768  
Corporate Offices: Phone: 800-322-2086

09/14/11