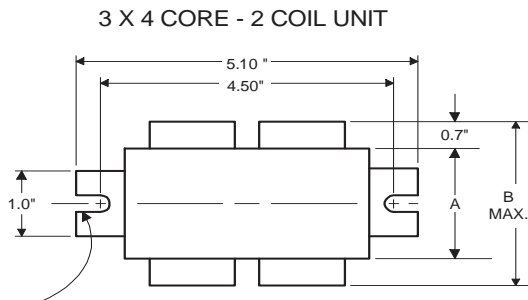


PHILIPS ADVANCE

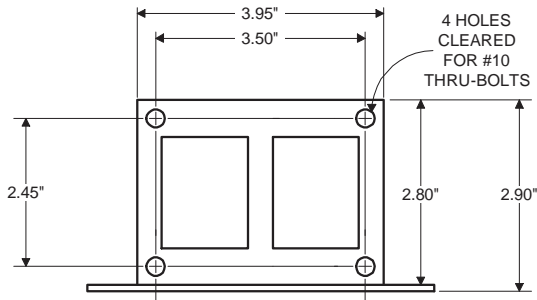
Metal
Halide
Lamp Ballast

Catalog Number 71A5490
For 150W M81
60 Hz HX-HPF
Status: Active

DIMENSIONS AND DATA

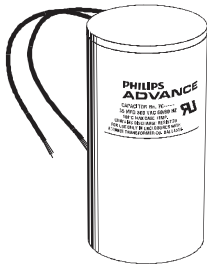


0.25" WIDE
2 SLOTS



INPUT VOLTS	120	208	240	277
CIRCUIT TYPE	HX-HPF			
POWER FACTOR (min)	90%			
REGULATION				
Line Volts	±5%			
Lamp Watts	±10%			
LINE CURRENT (Amps)				
Operating.....	1.60	1.00	0.80	0.70
Open Circuit.....	3.60	2.10	1.80	1.60
Starting.....	1.70	1.00	0.85	0.80
UL TEMPERATURE RATINGS				
Insulation Class	H(180°C)			
Coil Temperature Code	1029			
MIN. AMBIENT STARTING TEMP.	-20°F or -30°C			
NOM. OPEN CIRCUIT VOLTAGE	240			
INPUT VOLTAGE AT LAMP DROPOUT.....	90	160	180	190
INPUT WATTS	185			
RECOMMENDED FUSE (Amps).....	9	6	5	4
CORE and COIL				
Dimension (A)	2.50			
Dimension (B)	3.80			
Weight (lbs.)	8.5			
Lead Lengths	12"			
CAPACITOR REQUIREMENT				
Microfarads	16.0			
Volts (min.)	300			
Fault Current Withstand (amps)				
60 Hz TEST PROCEDURES (Refer to Advance Test Procedure for HID Ballasts - Form 1270)				
High Potential Test (Volts)				
1 minute	2000			
2 seconds	2500			
Open Circuit Voltage Test (Volts)	215-265			
Short-Circuit Current Test (Amps)				
Secondary Current	2.10-2.60			
Input Current.....	1.00-1.60	0.75-1.10	0.50-0.80	0.45-0.65

Capacitor: 7C160M30RA



Capacitance: 16
Dia/Oval Dim: 1.65
Height: 2.75
Temp Rating: 105°C



Wiring Diagram:

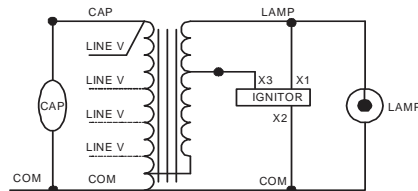


Fig. K

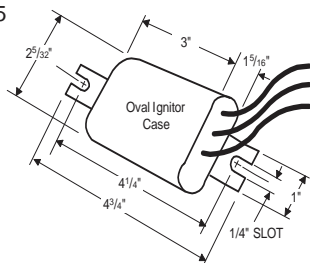
Ordering Information

Order Suffix

Description

Ignitor:

LI522-H5



Ballast to Lamp Distance
(BTL) = 20 feet
Temp Rating: 105°C

Data is based upon tests performed by Philips Lighting Electronic N.A. in a controlled environment and representative of relative performance. Actual performance can vary depending on operating conditions. Specifications are subject to change without notice.

Philips Lighting Electronic N.A.

10275 West Higgins Road · Rosemont, IL 60018 · Tel:800-322-2086 Fax:888-432-1882
Customer Support/ Technical Service:800-372-3331 · OEM Support: 866-915-5886

08/27/13