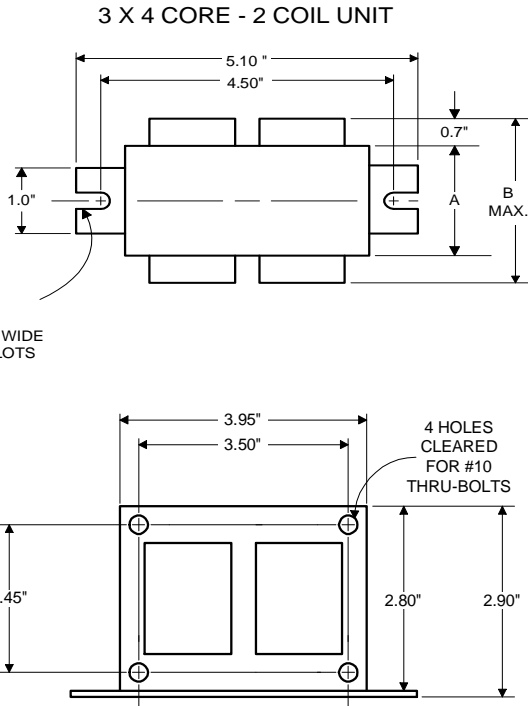




Metal Halide Lamp Ballast

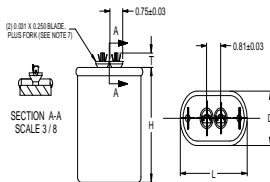
Catalog Number 71A55N0
 For 175/150W M57/M107
 50 Hz CWA
 Status: Active

DIMENSIONS AND DATA



INPUT VOLTS	120	230			
CIRCUIT TYPE	CWA				
POWER FACTOR (min)	90%				
REGULATION					
Line Volts	±10%				
Lamp Watts	±10%				
LINE CURRENT (Amps)					
Operating.....	2.00	1.05			
Open Circuit.....	1.50	0.80			
Starting.....	1.50	0.80			
UL TEMPERATURE RATINGS					
Insulation Class	H(180°C)				
Coil Temperature Code	1029				
MIN. AMBIENT STARTING TEMP.	-20°F or -30°C				
NOM. OPEN CIRCUIT VOLTAGE	310				
INPUT VOLTAGE AT LAMP DROPOUT.....	50	100			
INPUT WATTS	210				
RECOMMENDED FUSE (Amps).....	5	3			
CORE and COIL					
Dimension (A)	2.75				
Dimension (B)	4.00				
Weight (lbs.)	9				
Lead Lengths	12"				
CAPACITOR REQUIREMENT					
Microfarads	12.0				
Volts (min.)	425				
Fault Current Withstand (amps)					
60 Hz TEST PROCEDURES (Refer to Advance Test Procedure for HID Ballasts - Form 1270)					
High Potential Test (Volts)					
1 minute	2000				
2 seconds	2500				
Open Circuit Voltage Test (Volts)	290-355				
Short-Circuit Current Test (Amps)					
Secondary Current	2.30-2.80				
Input Current.....	2.50-3.70	1.30-1.90	-	-	-

Capacitor: MD1204-100



Capacitance: 12
 Dia/Oval Dim: 1.75
 Height: 2.9
 Temp Rating: 90°C

Wiring Diagram:

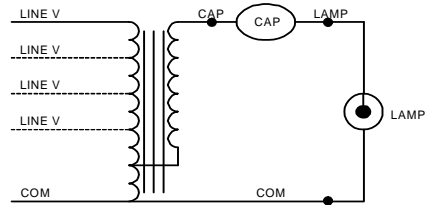


Fig. A

Ordering Information

Order Suffix	Description

Ignitor: NA

NA

This ballast does not require the use of an ignitor.

Data is based upon tests performed by Advance Transformer in a controlled environment and representative of relative performance. Actual performance can vary depending on operating conditions. Specifications are subject to change without notice.

ADVANCE TRANSFORMER CO.

O'HARE INTERNATIONAL CENTER · 10275 WEST HIGGINS ROAD · ROSEMONT, IL 60018
 Customer Support/Technical Service: Phone: 800-372-3331 · Fax: 847-768-7768
 Corporate Offices: Phone: 800-322-2086

12/13/07