

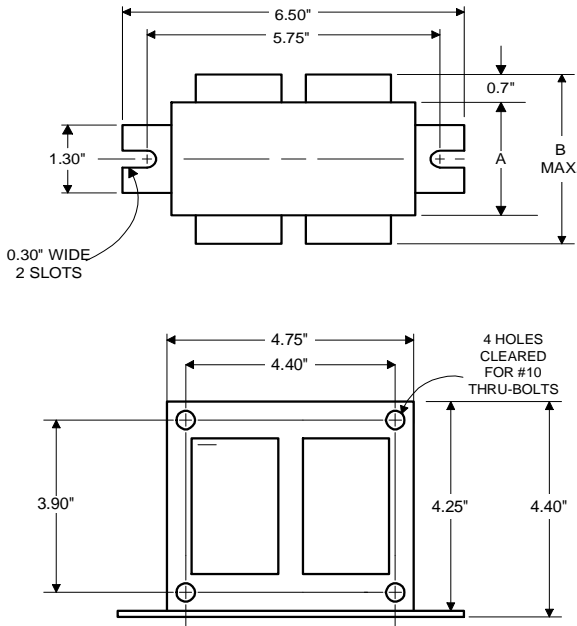


Metal
Halide
Lamp Ballast

Catalog Number 71A57N0
For 250W M58
50 Hz CWA
Status: Active

DIMENSIONS AND DATA

4 1/4 X 4 3/4 CORE - 2 COIL UNIT



INPUT VOLTS	120	230			
CIRCUIT TYPE	CWA				
POWER FACTOR (min)	90%				
REGULATION					
Line Volts	±10%				
Lamp Watts	±10%				
LINE CURRENT (Amps)					
Operating.....	2.50	1.30			
Open Circuit.....	2.00	1.10			
Starting.....	1.85	0.95			
UL TEMPERATURE RATINGS					
Insulation Class	H(180°C)				
Coil Temperature Code	1029				
MIN. AMBIENT STARTING TEMP.	-20°F or -30°C				
NOM. OPEN CIRCUIT VOLTAGE	315				
INPUT VOLTAGE AT LAMP DROPOUT.....	50	95			
INPUT WATTS	290				
RECOMMENDED FUSE (Amps).....	7	4			
CORE and COIL					
Dimension (A)	1.78				
Dimension (B)	3.40				
Weight (lbs.)	11.5				
Lead Lengths	12"				
CAPACITOR REQUIREMENT					
Microfarads	18.0				
Volts (min.)	400				
Fault Current Withstand (amps)					
60 Hz TEST PROCEDURES (Refer to Advance Test Procedure for HID Ballasts - Form 1270)					
High Potential Test (Volts)					
1 minute	2000				
2 seconds	2500				
Open Circuit Voltage Test (Volts)	300-370				
Short-Circuit Current Test (Amps)					
Secondary Current	3.50-4.30				
Input Current.....	3.20-4.80	1.70-2.50	-	-	-

Capacitor: 7C180P40R



Capacitance: 18
Dia/Oval Dim: 1.75
Height: 3.75
Temp Rating: 105°C

Wiring Diagram:

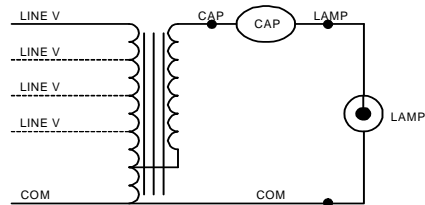


Fig. A

Ordering Information

Order Suffix	Description
500D	Dry Cap, No flag terminals
500DM	Dry cap, NOM (Mexico) Label, No flag terminals

Ignitor: NA

This ballast does not require the use of an ignitor.

Data is based upon tests performed by Advance Transformer in a controlled environment and representative of relative performance. Actual performance can vary depending on operating conditions. Specifications are subject to change without notice.

ADVANCE TRANSFORMER CO.

O'HARE INTERNATIONAL CENTER · 10275 WEST HIGGINS ROAD · ROSEMONT, IL 60018
Customer Support/Technical Service: Phone: 800-372-3331 · Fax: 847-768-7768
Corporate Offices: Phone: 800-322-2086

10/26/09