

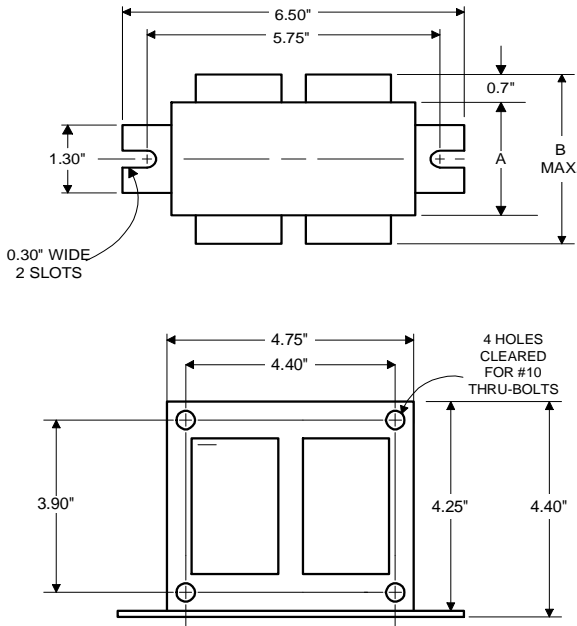


Metal
Halide
Lamp Ballast

Catalog Number 71A60E6
For 400W M59
60 Hz CWI
Status: Active

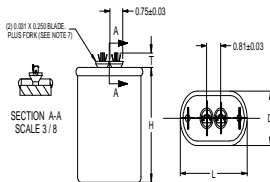
DIMENSIONS AND DATA

4 1/4 X 4 3/4 CORE - 2 COIL UNIT



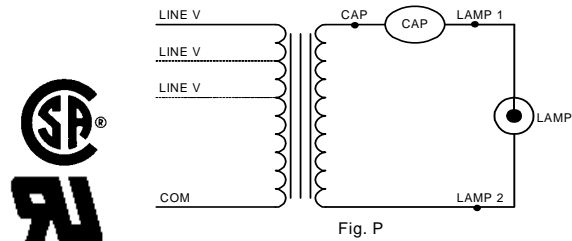
INPUT VOLTS	120	208	240		
CIRCUIT TYPE	CWI				
POWER FACTOR (min)	90%				
REGULATION					
Line Volts	±10%				
Lamp Watts	±10%				
LINE CURRENT (Amps)					
Operating.....	4.20	2.45	2.10		
Open Circuit.....	4.10	2.40	2.05		
Starting.....	1.30	0.75	0.65		
UL TEMPERATURE RATINGS					
Insulation Class	H(180°C)				
Coil Temperature Code	1029				
	E	D	D		
MIN. AMBIENT STARTING TEMP.	-20°F or -30°C				
NOM. OPEN CIRCUIT VOLTAGE	320				
INPUT VOLTAGE AT LAMP DROPOUT.....	60	104	120		
INPUT WATTS	465				
RECOMMENDED FUSE (Amps).....	10	7	5		
CORE and COIL					
Dimension (A)	2.40				
Dimension (B)	4.00				
Weight (lbs.)	14				
Lead Lengths	12"				
CAPACITOR REQUIREMENT					
Microfarads	20.0				
Volts (min.)	425				
Fault Current Withstand (amps)					
60 Hz TEST PROCEDURES (Refer to Advance Test Procedure for HID Ballasts - Form 1270)					
High Potential Test (Volts)					
1 minute	2000				
2 seconds	2500				
Open Circuit Voltage Test (Volts)	290-360				
Short-Circuit Current Test (Amps)					
Secondary Current	3.40-4.20				
Input Current.....	0.55-0.85	0.30-0.50	0.27-0.43	-	-

Capacitor: MD2006-100



Capacitance: 20
Dia/Oval Dim: 1.75
Height: 3.375
Temp Rating: 90°C

Wiring Diagram:



Ordering Information

Order Suffix	Description

Ignitor:

NA

This ballast does not require the use of an ignitor.

Data is based upon tests performed by Advance Transformer in a controlled environment and representative of relative performance. Actual performance can vary depending on operating conditions. Specifications are subject to change without notice.

ADVANCE TRANSFORMER CO.

O'HARE INTERNATIONAL CENTER · 10275 WEST HIGGINS ROAD · ROSEMONT, IL 60018
Customer Support/Technical Service: Phone: 800-372-3331 · Fax: 847-768-7768
Corporate Offices: Phone: 800-322-2086

07/02/97