

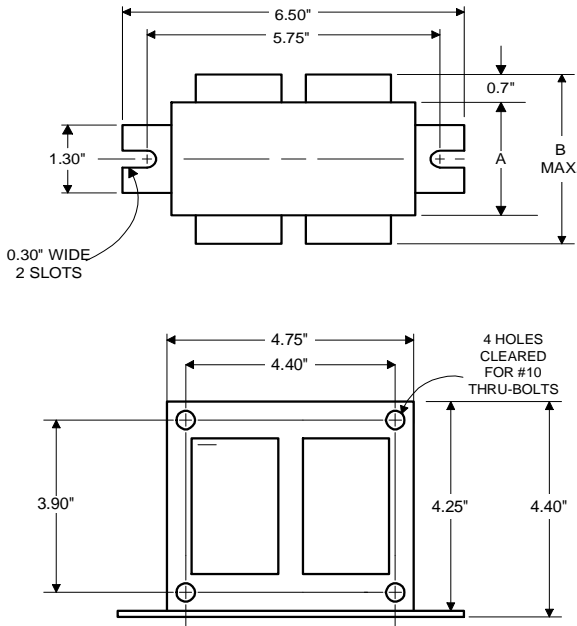


Metal  
Halide  
Lamp Ballast

Catalog Number 71A61E6  
For 400W M135/M155 (P.S.)  
60 Hz CWI  
Status: Active

**DIMENSIONS AND DATA**

4 1/4 X 4 3/4 CORE - 2 COIL UNIT



INPUT VOLTS	120	208	240		
CIRCUIT TYPE	CWI				
POWER FACTOR (min)	90%				
REGULATION					
Line Volts	±10%				
Lamp Watts	±10%				
LINE CURRENT (Amps)					
Operating.....	4.20	2.40	2.10		
Open Circuit.....	3.80	2.20	1.90		
Starting.....	1.30	0.75	0.65		
UL TEMPERATURE RATINGS					
Insulation Class	H(180°C)				
Coil Temperature Code	1029				
MIN. AMBIENT STARTING TEMP.	-20°F or -30°C				
NOM. OPEN CIRCUIT VOLTAGE	265				
INPUT VOLTAGE AT LAMP DROPOUT.....	60	104	120		
INPUT WATTS	455				
RECOMMENDED FUSE (Amps).....	10	7	5		
CORE and COIL					
Dimension (A)	2.20				
Dimension (B)	3.80				
Weight (lbs.)	13				
Lead Lengths	12"				
CAPACITOR REQUIREMENT					
Microfarads	26.0				
Volts (min.)	330				
Fault Current Withstand (amps)					
60 Hz TEST PROCEDURES (Refer to Advance Test Procedure for HID Ballasts - Form 1270)					
High Potential Test (Volts)					
1 minute	2000				
2 seconds	2500				
Open Circuit Voltage Test (Volts)	240-290				
Short-Circuit Current Test (Amps)					
Secondary Current	3.40-4.20				
Input Current.....	0.50-0.80	0.30-0.50	0.25-0.40	-	-

Capacitor: 7C260P33-R



Capacitance: 26  
Dia/Oval Dim: 1.75  
Height: 4.8  
Temp Rating: 105°C



Wiring Diagram:

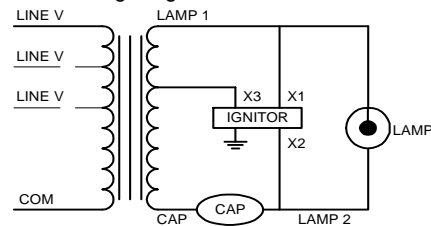


Fig. V

Ordering Information

Order Suffix	Description
500.	Ballast with Ignitor and Oil Filled Capacitor
510.	Ballast w/Welded Bracket, Igniter & Oil-Filled Capacitor

Ignitor: LI533-H4



Red (X1)  
White (X2)  
Blue (X3)

Ballast to Lamp Distance (BTL) = 2 feet  
Temp Rating: 105°C

Data is based upon tests performed by Advance Transformer in a controlled environment and representative of relative performance. Actual performance can vary depending on operating conditions. Specifications are subject to change without notice.

**ADVANCE TRANSFORMER CO.**

O'HARE INTERNATIONAL CENTER · 10275 WEST HIGGINS ROAD · ROSEMONT, IL 60018  
Customer Support/Technical Service: Phone: 800-372-3331 · Fax: 847-768-7768  
Corporate Offices: Phone: 800-322-2086

02/17/10