

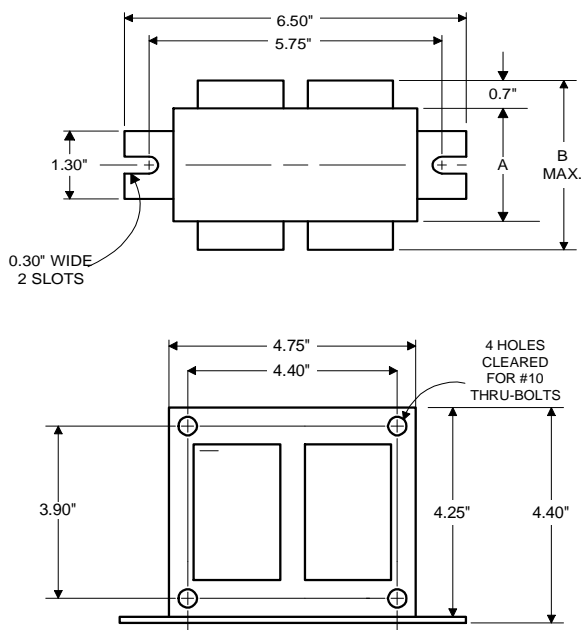


Metal
Halide
Lamp Ballast

Catalog Number 71A5892AEE
For 320W M132/M154 (P.S.)
60 Hz SUPER-CWA
Status: Active

DIMENSIONS AND DATA

4 1/4 X 4 3/4 CORE - 2 COIL UNIT

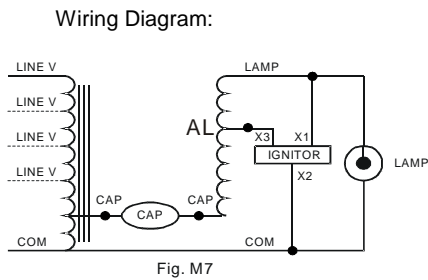


	120	208	240	277
INPUT VOLTS				
CIRCUIT TYPE	SUPER-CWA			
POWER FACTOR (min)	90%			
REGULATION				
Line Volts	±10%			
Lamp Watts	±10%			
LINE CURRENT (Amps)				
Operating.....	3.25	1.90	1.65	1.40
Open Circuit.....	1.46	0.79	0.74	0.62
Starting.....	2.70	1.52	1.35	1.16
UL TEMPERATURE RATINGS				
Insulation Class	H(180°C)			
Coil Temperature Code	1029			
MIN. AMBIENT STARTING TEMP.	-20°F or -30°C			
NOM. OPEN CIRCUIT VOLTAGE	280			
INPUT VOLTAGE AT LAMP DROPOUT.....	60	104	120	138
INPUT WATTS	363			
RECOMMENDED FUSE (Amps).....	8	6	5	3
CORE and COIL				
Dimension (A)	2.06			
Dimension (B)	3.77			
Weight (lbs.)	11			
Lead Lengths	12"			
CAPACITOR REQUIREMENT				
Microfarads	21.0			
Volts (min.)	400			
Fault Current Withstand (amps)				
60 Hz TEST PROCEDURES (Refer to Advance Test Procedure for HID Ballasts - Form 1270)				
High Potential Test (Volts)				
1 minute	2000			
2 seconds	2500			
Open Circuit Voltage Test (Volts)	254-310			
Short-Circuit Current Test (Amps)				
Secondary Current	2.90-3.60			
Input Current.....	2.16-3.24	1.21-1.82	1.08-1.62	0.93-1.39

Capacitor: 7C210P40R



Capacitance: 21
Dia/Oval Dim: 1.75
Height: 4.8
Temp Rating: 105°C



Ordering Information

Order Suffix	Description
EE	EISA COMPLIANT - 88% EFFICIENT BALLAST

Ignitor: LI533-H4



Ballast to Lamp Distance (BTL) = 2 feet
Temp Rating: 105°C

Data is based upon tests performed by Advance Transformer in a controlled environment and representative of relative performance. Actual performance can vary depending on operating conditions. Specifications are subject to change without notice.