

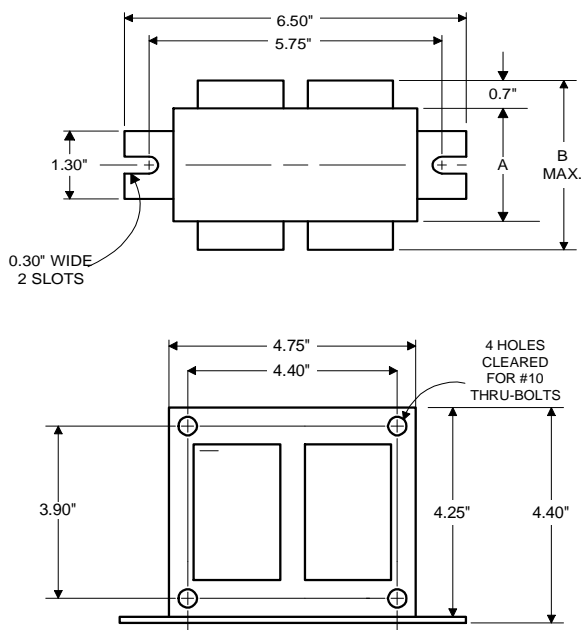


Metal Halide Lamp Ballast

Catalog Number 71A64F8T
For 875W M166
60 Hz CWA
Status: Active

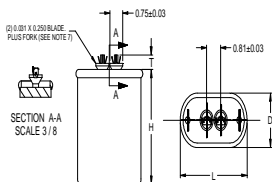
DIMENSIONS AND DATA

4 1/4 X 4 3/4 CORE - 2 COIL UNIT



INPUT VOLTS	347	480			
CIRCUIT TYPE	CWA				
POWER FACTOR (min)	90%				
REGULATION					
Line Volts	±10%				
Lamp Watts	±10%				
LINE CURRENT (Amps)					
Operating.....	2.75	2.00			
Open Circuit.....	1.70	0.95			
Starting.....	2.80	1.65			
UL TEMPERATURE RATINGS					
Insulation Class	N(200°C)				
Coil Temperature Code	1029				
	E	E			
MIN. AMBIENT STARTING TEMP.	-30°F or -35°C				
NOM. OPEN CIRCUIT VOLTAGE	415				
INPUT VOLTAGE AT LAMP DROPOUT.....	180	250			
INPUT WATTS	945				
RECOMMENDED FUSE (Amps).....	7	5			
CORE and COIL					
Dimension (A)	3.00				
Dimension (B)	5.00				
Weight (lbs.)	17.5				
Lead Lengths	12"				
CAPACITOR REQUIREMENT					
Microfarads	21.0				
Volts (min.)	480				
Fault Current Withstand (amps)					
60 Hz TEST PROCEDURES (Refer to Advance Test Procedure for HID Ballasts - Form 1270)					
High Potential Test (Volts)					
1 minute	1500				
2 seconds	2500				
Open Circuit Voltage Test (Volts)	375-455				
Short-Circuit Current Test (Amps)					
Secondary Current	4.45-5.40				
Input Current.....	2.25-3.35	1.30-2.00	-	-	-

Capacitor: MD2100-030



Capacitance: 21
Dia/Oval Dim: 1.75
Height: 3.9
Temp Rating: 90°C

Wiring Diagram:

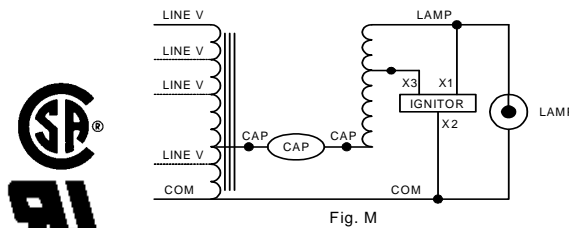


Fig. M

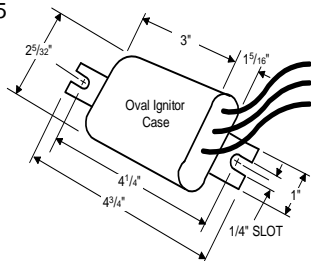
Ordering Information

Order Suffix

Description

Ignitor:

LI572-H5



Ballast to Lamp Distance (BTL) = 5 feet
Temp Rating: 105°C

Data is based upon tests performed by Advance Transformer in a controlled environment and representative of relative performance. Actual performance can vary depending on operating conditions. Specifications are subject to change without notice.

ADVANCE TRANSFORMER CO.

O'HARE INTERNATIONAL CENTER · 10275 WEST HIGGINS ROAD · ROSEMONT, IL 60018
Customer Support/Technical Service: Phone: 800-372-3331 · Fax: 847-768-7768
Corporate Offices: Phone: 800-322-2086

07/14/11